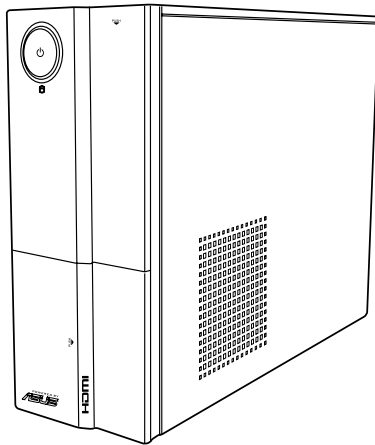


# ASUS<sup>®</sup>

## P6-M4A3000E

### ASUS PC (Desktop Barebone)

#### User's Manual



E5388

First Edition V1

March 2010

Copyright © 2010 ASUSTeK Computer Inc. All Rights Reserved.

No part of this manual, including the products and software described in it, may be reproduced, transmitted, transcribed, stored in a retrieval system, or translated into any language in any form or by any means, except documentation kept by the purchaser for backup purposes, without the express written permission of ASUSTeK Computer Inc. ("ASUS").

Product warranty or service will not be extended if: (1) the product is repaired, modified or altered, unless such repair, modification or alteration is authorized in writing by ASUS; or (2) the serial number of the product is defaced or missing.

ASUS PROVIDES THIS MANUAL "AS IS" WITHOUT WARRANTY OF ANY KIND, EITHER EXPRESS OR IMPLIED, INCLUDING BUT NOT LIMITED TO THE IMPLIED WARRANTIES OR CONDITIONS OF MERCHANTABILITY OR FITNESS FOR A PARTICULAR PURPOSE. IN NO EVENT SHALL ASUS, ITS DIRECTORS, OFFICERS, EMPLOYEES OR AGENTS BE LIABLE FOR ANY INDIRECT, SPECIAL, INCIDENTAL, OR CONSEQUENTIAL DAMAGES (INCLUDING DAMAGES FOR LOSS OF PROFITS, LOSS OF BUSINESS, LOSS OF USE OR DATA, INTERRUPTION OF BUSINESS AND THE LIKE), EVEN IF ASUS HAS BEEN ADVISED OF THE POSSIBILITY OF SUCH DAMAGES ARISING FROM ANY DEFECT OR ERROR IN THIS MANUAL OR PRODUCT.

SPECIFICATIONS AND INFORMATION CONTAINED IN THIS MANUAL ARE FURNISHED FOR INFORMATIONAL USE ONLY, AND ARE SUBJECT TO CHANGE AT ANY TIME WITHOUT NOTICE, AND SHOULD NOT BE CONSTRUED AS A COMMITMENT BY ASUS. ASUS ASSUMES NO RESPONSIBILITY OR LIABILITY FOR ANY ERRORS OR INACCURACIES THAT MAY APPEAR IN THIS MANUAL, INCLUDING THE PRODUCTS AND SOFTWARE DESCRIBED IN IT.

Products and corporate names appearing in this manual may or may not be registered trademarks or copyrights of their respective companies, and are used only for identification or explanation and to the owners' benefit, without intent to infringe.

# Table of contents

Notices.....	vi
Safety information .....	v
About this guide .....	vi
System package contents.....	viii
<b>Chapter 1: System introduction</b>	
1.1 Welcome! .....	1-2
1.2 Front panel .....	1-2
1.3 Rear panel.....	1-4
1.4 Internal components.....	1-6
1.5 Qualified Vendors Lists (QVL) .....	1-7
<b>Chapter 2: Starting up</b>	
2.1 Installing an operating system .....	2-2
2.2 Powering up.....	2-2
2.3 Support DVD information .....	2-2
2.3.1 Running the support DVD .....	2-3
2.3.2 Utilities menu .....	2-4
2.3.3 Manual menu .....	2-5
2.3.4 ASUS Contact information .....	2-6
2.3.5 Other information .....	2-6
<b>Chapter 3: Motherboard info</b>	
3.1 Introduction .....	3-2
3.2 Motherboard layout.....	3-2
3.3 Jumpers .....	3-3
3.4 Connectors .....	3-4
<b>Chapter 4: BIOS setup</b>	
4.1 Managing and updating your BIOS .....	4-2
4.1.1 ASUS Update utility .....	4-2
4.1.2 ASUS EZ Flash 2.....	4-5
4.1.3 ASUS CrashFree BIOS.....	4-6
4.2 BIOS setup program .....	4-7
4.2.1 BIOS menu screen.....	4-8

# Table of contents

4.2.3	Navigation keys.....	4-8
4.2.2	Menu bar.....	4-8
4.2.4	Menu items .....	4-9
4.2.5	Sub-menu items.....	4-9
4.2.6	Configuration fields .....	4-9
4.2.7	Pop-up window .....	4-9
4.2.8	Scroll bar.....	4-9
4.2.9	General help .....	4-9
<b>4.3</b>	<b>Main menu .....</b>	<b>4-10</b>
4.3.1	System Time .....	4-10
4.3.2	System Date .....	4-10
4.3.3	SATA1~3.....	4-11
4.3.4	System Information.....	4-12
<b>4.4</b>	<b>Advanced menu .....</b>	<b>4-13</b>
4.4.1	CPU Configuration .....	4-13
4.4.2	Chipset.....	4-14
4.4.3	Onboard Devices Configuration.....	4-16
4.4.4	PCI/PnP .....	4-16
4.4.5	USB Configuration .....	4-17
<b>4.5</b>	<b>Power menu.....</b>	<b>4-18</b>
4.5.1	Suspend Mode.....	4-18
4.5.2	ACPI 2.0 Support.....	4-18
4.5.3	ACPI APIC Support.....	4-18
4.5.4	APM Configuration.....	4-19
4.5.5	Hardware Monitor .....	4-19
<b>4.6</b>	<b>Boot menu .....</b>	<b>4-20</b>
4.6.1	Boot Device Priority .....	4-21
4.6.2	Boot Settings Configuration .....	4-21
4.6.3	Security .....	4-22
<b>4.7</b>	<b>Tools menu .....</b>	<b>4-24</b>
4.7.1	ASUS EZ Flash 2.....	4-24
4.7.2	Express Gate .....	4-25
4.7.3	AI NET 2.....	4-25
<b>4.8</b>	<b>Exit menu.....</b>	<b>4-26</b>

# Notices

## Canadian Department of Communications Statement

This digital apparatus does not exceed the Class B limits for radio noise emissions from digital apparatus set out in the Radio Interference Regulations of the Canadian Department of Communications.

This class B digital apparatus complies with Canadian ICES-003.

## REACH

Complying with the REACH (Registration, Evaluation, Authorisation, and Restriction of Chemicals) regulatory framework, we published the chemical substances in our products at ASUS REACH website at <http://green.asus.com/english/REACH.htm>.

## Safety information

### Electrical safety

- To prevent electric shock hazard, disconnect the power cable from the electric outlet before relocating the system.
- When adding or removing devices to or from the system, ensure that the power cables for the devices are unplugged before the signal cables are connected. If possible, disconnect all power cables from the existing system before you add a device.
- Before connecting or removing signal cables from the motherboard, ensure that all power cables are unplugged.
- Seek professional assistance before using an adapter or extension cord. These devices could interrupt the grounding circuit.
- Ensure that your power supply is set to the correct voltage in your area. If you are not sure about the voltage of the electrical outlet you are using, contact your local power company.
- If the power supply is broken, do not try to fix it by yourself. Contact a qualified service technician or your retailer.

## Operation safety

- Before installing the motherboard and adding devices on it, carefully read all the manuals that came with the package.
- Before using the product, ensure that all cables are correctly connected and the power cables are not damaged. If you detect any damage, contact your dealer immediately.
- To avoid short circuits, keep paper clips, screws, and staples away from connectors, slots, sockets and circuitry.
- Avoid dust, humidity, and temperature extremes. Do not place the product in any area where it may become wet.
- Place the product on a stable surface.
- If you encounter technical problems with the product, contact a qualified service technician or your retailer.



DO NOT throw the motherboard in municipal waste. This product has been designed to enable proper reuse of parts and recycling. This symbol of the crossed out wheeled bin indicates that the product (electrical and electronic equipment) should not be placed in municipal waste. Check local regulations for disposal of electronic products.



DO NOT throw the mercury-containing button cell battery in municipal waste. This symbol of the crossed out wheeled bin indicates that the battery should not be placed in municipal waste.

## About this guide

### Audience

This guide provides general information and installation instructions about the ASUS P6-M4A3000E barebone system. This guide is intended for experienced users and integrators with hardware knowledge of personal computers.

### How this guide is organized

This guide contains the following parts:

#### 1. Chapter 1: System introduction

This chapter gives a general description of the ASUS P6-M4A3000E. The chapter lists the system features, including introduction on the front and rear panel, and internal components.

## 2. **Chapter 2: Starting up**

This chapter helps you power up the system and install drivers and utilities from the support DVD.

## 3. **Chapter 3: Motherboard info**

This chapter gives information about the motherboard that comes with the system. This chapter includes the motherboard layout, jumper settings, and connector locations.

## 4. **Chapter 4: BIOS setup**

This chapter tells how to change system settings through the BIOS Setup menus and describes the BIOS parameters.

### **Conventions used in this guide**



**WARNING:** Information to prevent injury to yourself when trying to complete a task.



**CAUTION:** Information to prevent damage to the components when trying to complete a task.



**IMPORTANT:** Instructions that you **MUST** follow to complete a task.



**NOTE:** Tips and additional information to aid in completing a task.

### **Where to find more information**

Refer to the following sources for additional information and for product and software updates.

#### **1. ASUS Websites**

The ASUS websites worldwide provide updated information on ASUS hardware and software products. Refer to the ASUS contact information.

#### **2. Optional Documentation**

Your product package may include optional documentation, such as warranty flyers, that may have been added by your dealer. These documents are not part of the standard package.

# System package contents

Check your P6-M4A3000E system package for the following items.



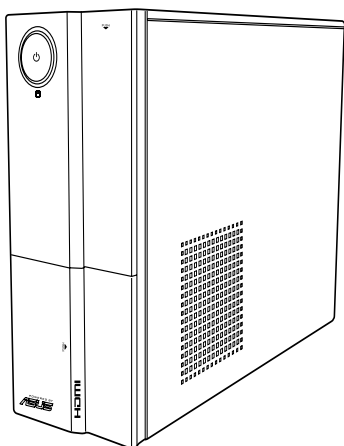
If any of the items is damaged or missing, contact your retailer immediately.

Item description	
1.	ASUS P6-M4A3000E barebone system with <ul style="list-style-type: none"><li>• ASUS motherboard</li><li>• Power supply unit</li><li>• ASUS chassis</li></ul>
2.	Cable <ul style="list-style-type: none"><li>• AC power cable</li></ul>
3.	Support DVD
4.	Quick Installation Guide



# Chapter 1

This chapter gives a general description of the ASUS P6-M4A3000E. The chapter lists the system features including introduction on the front and rear panel, and internal components.



## System introduction

## 1.1 Welcome!

Thank you for choosing the ASUS P6-M4A3000E!

The ASUS P6-M4A3000E is an all-in-one barebone system with a versatile home entertainment feature.

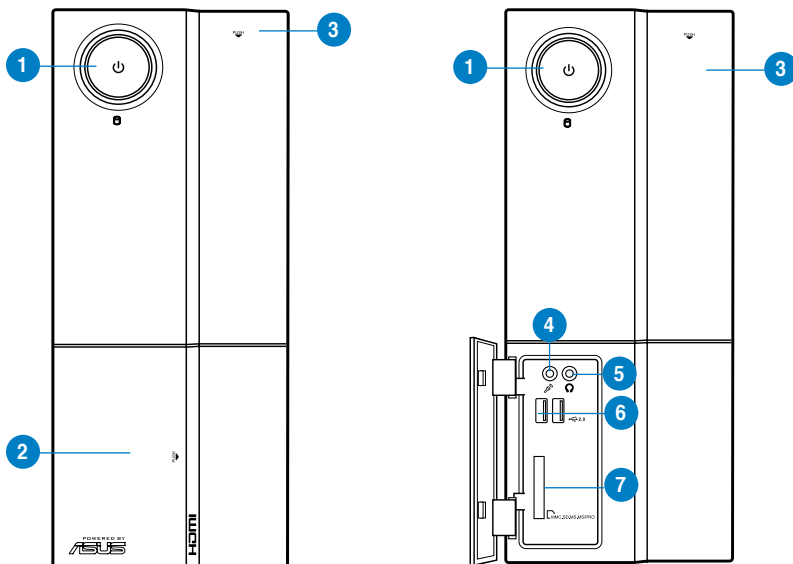
The system comes in a stylish casing and powered by the ASUS motherboard that supports the AMD® AM3 socket for Phenom™ II / Phenom™ / Athlon™ 64 / Athlon™ X2 / Athlon™ FX / Sempron™ processors.



The system supports up to 8 GB of system memory using DDR3-1800(O.C.) / 1333 / 1066 MHz DIMMs. High-resolution graphics via integrated graphics controller or PCI Express x16 slot, Serial ATA, USB 2.0, and 8-channel audio feature the system and take you ahead in the world of power computing.

## 1.2 Front panel

The front panel includes the optical drive bays, power button, and several I/O ports are located at the front panel.

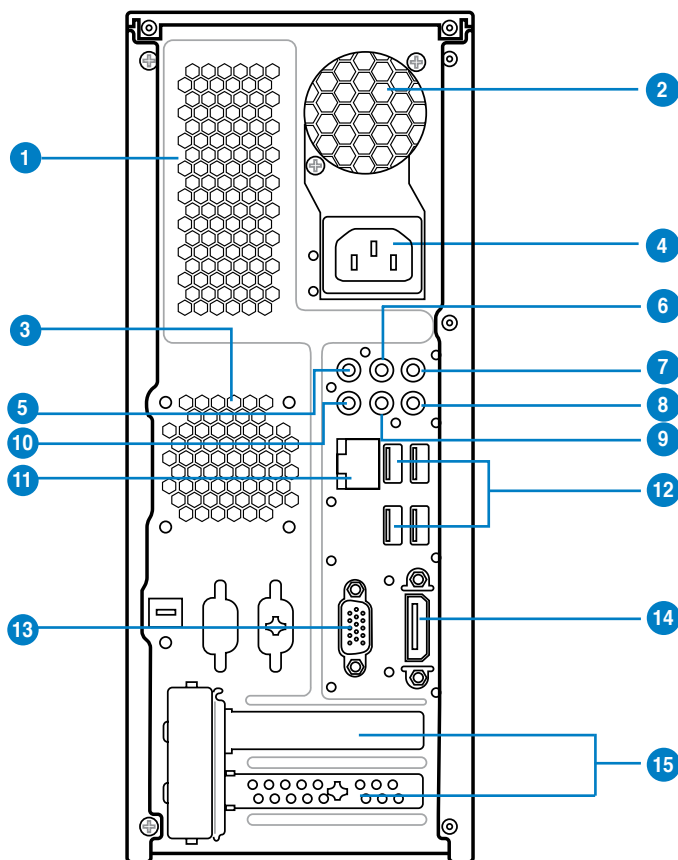
### Front panel



1. **Power button.** Press this button to turn the system on/off.
2. **Front panel cover.** Push  to open the front panel cover.
3. **Optical disk drive cover.** Push  to eject the optical disk drive.
4. **Microphone port.** This Mic (pink) port connects a microphone.
5. **Headphone port.** This Line out (lime) port connects a headphone with a stereo mini-plug.
6. **USB 2.0 ports.** These Universal Serial Bus 2.0 (USB 2.0) ports are available for connecting USB 2.0 devices such as a mouse, printer, scanner, camera, PDA, and others.
7. **Multimedia Card / Secure Digital™ / MemoryStick® / Memory Stick Pro™ card slot**

## 1.3 Rear panel

The system rear panel includes the power connector and several I/O ports that allow convenient connection of devices.



Do NOT cover the rear vent, and the ambient temperature is limited up to 35°C to prevent the system from overheating.

1. **Chassis air vent.** The vent is for ventilation inside the system chassis.
2. **Power supply unit fan vent.** This vent is for the PSU fan that provides ventilation inside the power supply unit.
3. **Chassis fan vent.** This vent is for the fan that provides ventilation inside the system chassis.
4. **Power connector.** This connector is for the power cable and plug.

5. **Line In port (light blue).** This port connects the tape, CD, DVD player, or other audio sources.
6. **Line Out port (lime).** This port connects a headphone or a speaker. In 4-channel, 6-channel, and 8-channel configuration, the function of this port becomes Front Speaker Out.
7. **Microphone port (pink).** This port connects a microphone.
8. **Side Speaker Out port (gray).** This port connects the side speaker in an 8-channel audio configuration.
9. **Rear Speaker Out port (black).** This port connects the rear speakers in a 4-channel, 6-channel, or 8-channel audio configuration.
10. **Center / Subwoofer port (orange).** This port connects the center/subwoofer speakers.



Refer to the audio configuration table below for the function of the audio ports in 2, 4, 6, or 8-channel configuration.

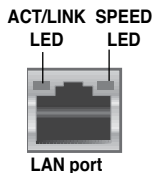
### Audio 2, 4, 6, or 8-channel configuration

Port	Headset 2-channel	4-channel	6-channel	8-channel
Light Blue	Line In	Line In	Line In	Line In
Lime	Line Out	Front Speaker Out	Front Speaker Out	Front Speaker Out
Pink	Mic In	Mic In	Mic In	Mic In
Orange	–	–	Center/Subwoofer	Center/Subwoofer
Black	–	Rear Speaker Out	Rear Speaker Out	Rear Speaker Out
Gray	–	–	–	Side Speaker Out

11. **LAN (RJ-45) port.** This port allows gigabit connection to a Local Area Network (LAN) through a network hub. Refer to the table below for the LAN port LED indications.

### LAN port LED indications

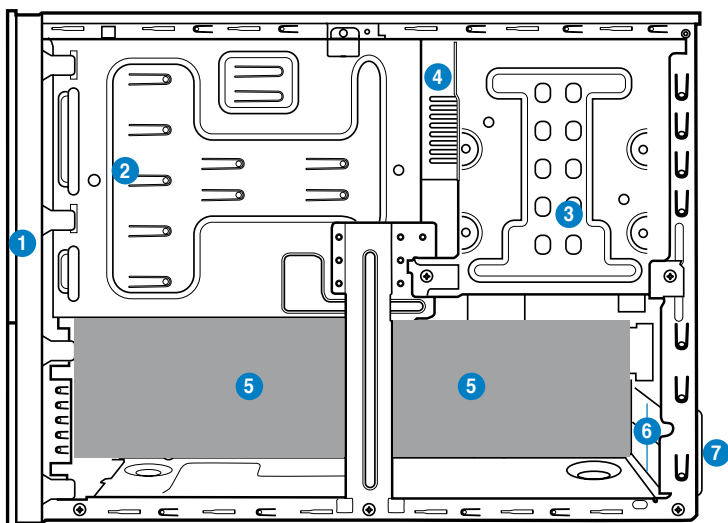
Activity/Link		Speed LED	
Status	Description	Status	Description
OFF	No link	OFF	10 Mbps connection
ORANGE	Linked	ORANGE	100 Mbps connection
BLINKING	Data activity	GREEN	1 Gbps connection



12. **USB 2.0 ports 1 ~ 4.** These 4-pin Universal Serial Bus (USB) ports are available for connecting USB 2.0 devices.
13. **Video Graphics Adapter (VGA) port.** This 15-pin port is for a VGA monitor or other VGA-compatible devices.
14. **HDMI port.** This is a High-Definition Multimedia Interface (HDMI) connector, and is HDCP compliant allowing playback of HD DVD, Blu-Ray discs, and other protected content.
15. **Expansion slot covers.** Remove these covers when installing expansion cards.

## 1.4 Internal components

The illustration below is the internal view of the system when you remove the side cover and the power supply unit. The installed components are labeled for your reference.



- |  |                                  |
|--|----------------------------------|
| 1. Front panel cover                     | 5. ASUS motherboard              |
| 2. 5.25-inch optical drive bays          | 6. Expansion slot metal brackets |
| 3. Hard disk drive bay                   | 7. Metal bracket lock            |
| 4. Power supply unit (under the HDD bay) |                                  |



- Refer to the bundled Quick Installation Guide for installing additional system components and get assistance from professionals when you disassemble or assemble the system.
- Refer to the Chapter 3 in this user guide for motherboard details.

## 1.5 Qualified Vendors Lists (QVL)

### DDR3-1066MHz capability

Vendor	Part No.	Size	SS/DS	Chip Brand	Chip NO.	Timing	Voltage	DIMM socket support (Optional)	
								A*	B*
Crucial	CT25664BA1067.16FF	2048MB	DS	Micron	9HF22D9KPT	7	-	•	•
Crucial	CT25672BA1067.18FF	2048MB	DS	Micron	9GF22D9KPT(ECC)	7	-	•	•
Elpida	EBJ51UD8BAFA-AE-E	512MB	SS	Elpida	J5308BASE-AC-E	-	-	•	•
Kingston	KVR1066D3N7/1G	1024MB	SS	Kingston	D1288JEKAPGA7U	7	1.5V	•	•
Micron	MT8JTF12864AY-1G1D1	1024MB	SS	Micron	8ED22D9JNL	-	-	•	•
Micron	MT16JTF25664AY-1G1D1	2048MB	DS	Micron	8LD22D9JNL	-	-	•	•
Micron	MT16JTF25664AZ-1G1F1	2048MB	DS	Micron	9HF22D9KPT	7	-	•	•
Micron	MT18JSF25672AZ-1G1F1	2048MB	DS	Micron	9GF22D9KPT(ECC)	7	-	•	•
SAMSUNG	M378B2873EH1-CF8	1024MB	SS	Samsung	SEC 901 HCF8 K4B1G0846E	-	-	•	•

### DDR3-1333MHz capability

Vendor	Part No.	Size	SS/DS	Chip Brand	Chip NO.	Timing	Voltage	DIMM socket support (Optional)	
								A*	B*
Corsair	CM3X1024-1333C9	1024MB	SS	-	-	-	-	•	•
Corsair	CM3X1024-1333C9DHX	1024MB	DS	Corsair	-	-	-	•	•
Crucial	CT12872BA1339.9FF	1024MB	SS	Micron	91F22D9KPT(ECC)	9	-	•	•
Crucial	BL25664BA1336.16SFB1	4096MB(Kit of 2)	DS	-	-	6-6-6-20	1.8V	•	•
G.SKILL	F3-10600CL8D-2GBHK	1024MB	SS	G.SKILL	-	-	-	•	•
G.SKILL	F3-10666CL9T-6GBNQ	6144MB(Kit of 3)	DS	-	-	9-9-9-24	1.5V~1.6V	•	•
GEIL	GV34GB1333C7DC	2048MB	DS	-	-	7-7-7-24	1.5V	•	•
Kingmax	FLFE85F-B8MF9	2048MB	DS	Micron	8HD22D9JNM	-	-	•	•
Kingston	KVR1333D3N9/1G	1024MB	SS	Hynix	H5TQ1G83BFR	9	1.5V	•	•
Micron	MT9JSF 12872AZ-1G4F1	1024MB	SS	Micron	91F22D9KPT(ECC)	9	-	•	•
OCZ	OCZ3P13332GK	2048MB(Kit of 2)	SS	-	-	7-7-7-20	1.8V	•	•
SAMSUNG	M378B5673DZ1-CH9	2048MB	DS	Samsung	K4B1G0846D-HCH9	-	-	•	•
Transcend	TS128MLK64V3U	1024MB	SS	-	SEC 813HCH9 K4B1G0846D	-	-	•	•

DDR3-1800MHz (O.C.) capability

Vendor	Part No.	Size	SS/DS	Chip Brand	Chip NO.	Timing	Voltage	DIMM socket support (Optional)	
								A*	B*
Corsair	CM3X2G1800C8D	2048MB	DS	-	-	-	-	•	•
OCZ	OCZ3G18002GK	2048MB(Kit of 2)	SS	-	-	9-9-9-27	1.9V	•	•
OCZ	OCZ3P18004GK	4096MB(Kit of 2)	DS	-	-	8-8-8-27	1.9V	•	•
OCZ	QCZ3P18004GK	4096MB(Kit of 2)	DS	-	-	8-8-8-27	1.9V	•	•
Transcend	TX1800KLU-2GK	1024MB	SS	-	-	-	-	•	•



SS - Single-sided / DS - Double-sided

DIMM support:

- A\*: Supports one module inserted in either slot as Single-channel memory configuration.
- B\*: Supports one pair of modules inserted into both the blue slots as one pair of Dual-channel memory configuration.

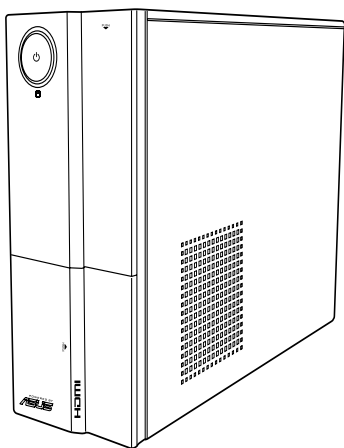


Visit the ASUS website at [www.asus.com](http://www.asus.com) for the latest QVL.



# Chapter 2

This chapter helps you power up the system and install drivers and utilities from the support DVD.



# Starting up

## 2.1 Installing an operating system

The barebone system supports Windows® XP/Vista/7 operating systems (OS). Always install the latest OS version and corresponding updates so you can maximize the features of your hardware.



Motherboard settings and hardware options vary. Use the setup procedures presented in this chapter for general reference only. Refer to your OS documentation for more information.



- Windows XP OS setup cannot recognize Serial ATA hard drives in a RAID set without the necessary drivers. Use a RAID driver disk when installing Windows XP OS to a Serial ATA hard drive included in a RAID set.
- From the Windows XP setup screen, press F6 when prompted then follow succeeding screen instructions to install the SATA drivers.

## 2.2 Powering up

Press the system power button (⏻) to enter the OS.

Press to turn ON the system



## 2.3 Support DVD information

The support DVD that came with the system contains useful software and several utility drivers that enhance the system features.



- Screen display and driver options may not be the same for different operating system versions.
- The contents of the support DVD are subject to change at any time without notice. Visit the ASUS website at [www.asus.com](http://www.asus.com) for updates.

### 2.3.1 Running the support DVD

To begin using the support DVD, place the DVD in your optical drive. The DVD automatically displays the Drivers menu if Autorun is enabled in your computer.



Click an icon to display support DVD/motherboard information

Click an item to install



If Autorun is NOT enabled in your computer, browse the contents of the support DVD to locate the file ASSETUP.EXE from the BIN folder. Double-click the ASSETUP.EXE to run the DVD.

#### ASUS InstAll

Launches the ASUS InstAll driver installation wizard.

#### PC-cillin 2010

Installs the PC-cillin 2010 to protect your system from the latest threats.

#### AMD Cool 'n' Quite Driver

Installs the AMD® Cool 'n' Quite driver.

#### VIA Audio Driver

Installs the VIA® audio driver and application.

#### AMD Chipset Driver

Installs the AMD® chipset driver.

#### ASUS EPU-4 Engine

Installs the ASUS EPU-4 Engine.

## AMD Graphics Driver

Installs the AMD® Graphics driver.

## Realtek 10/100/1000 PCI-E LAN Driver

Installs the Realtek® 10/100/1000 PCI-E LAN driver.

## AMD HDMI Driver Program

Installs the AMD® HDMI driver.

## ASUS Express Gate Installer

Installs the ASUS Express Gate.

### 2.3.2 Utilities menu

The Utilities menu shows the applications and other software that the motherboard supports.



#### ASUS InstAll

Installs all of the utilities through the Installation Wizard.

#### ASUS Update

Allows you to download the latest version of the BIOS from the ASUS website.



Before using the ASUS Update, make sure that you have an Internet connection so you can connect to the ASUS website.

#### Adobe Reader 9

Installs the Adobe® Reader that allows you to open, view, and print documents in Portable Document Format (PDF).

## Microsoft DirectX 9.0c

Installs the Microsoft® DirectX 9.0c driver. The Microsoft DirectX® 9.0c is a multimedia technology that enhances computer graphics and sound. DirectX® improves the multimedia features of your computer so you can enjoy watching TV and movies, capturing videos, or playing games in your computer. Visit the Microsoft website ([www.microsoft.com](http://www.microsoft.com)) for updates.

## ASUS AI Manager

Installs the ASUS AI Manager.

### 2.3.3 Manual menu

The **Manual** menu contains a list of supplementary user manuals. Click an item to open the folder of the user manual.



---

The user manual files are in Portable Document Format (PDF). Install the Adobe® Reader from the Utilities menu before opening a user manual file.

---



## 2.3.4 ASUS Contact information

Click the Contact tab to display the ASUS contact information. You can also find this information on the inside front cover of this user guide.



## 2.3.5 Other information

The icons on the top right corner of the screen give additional information on the motherboard and the contents of the support DVD. Click an icon to display the specified information.

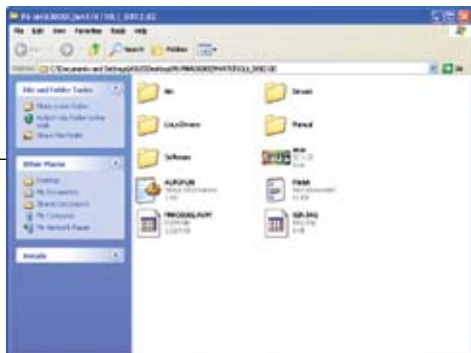
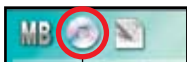
### Motherboard Info

Displays the general specifications of the motherboard.



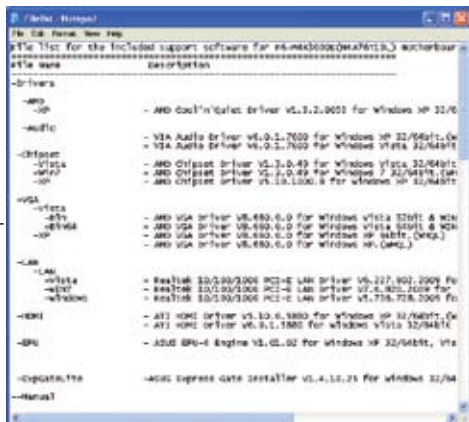
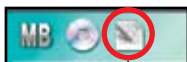
## Browse this DVD

Displays the support DVD contents in graphical format.



## Filelist

Displays the contents of the support DVD and a brief description of each in text format.

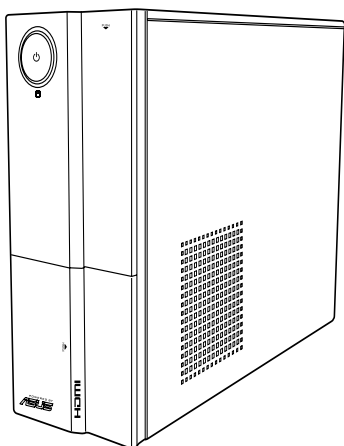


[illegible]



# Chapter 3

This chapter gives information about the motherboard that comes with the system. This chapter includes the motherboard layout, jumper settings, and connector locations.

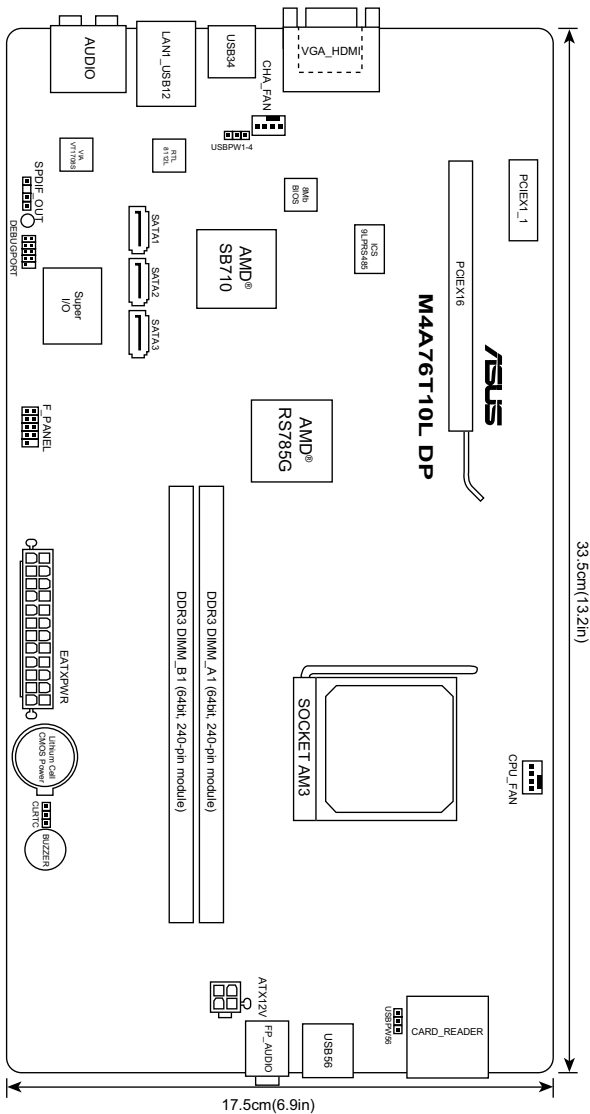


## Motherboard info

### 3.1 Introduction

The P6-M4A3000E barebone system comes with an ASUS motherboard. This chapter provides technical information about the motherboard for future upgrades or system reconfiguration.

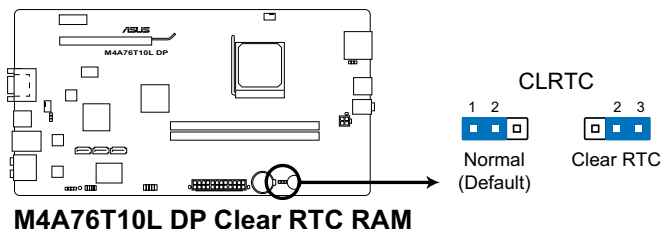
### 3.2 Motherboard layout



## 3.3 Jumpers

### 1. Clear RTC RAM (3-pin CLRTC)

This jumper allows you to clear the Real Time Clock (RTC) RAM in CMOS. You can clear the CMOS memory of date, time, and system setup parameters by erasing the CMOS RTC RAM data. The onboard button cell battery powers the RAM data in CMOS, which include system setup information such as system passwords.



To erase the RTC RAM:

1. Turn OFF the computer and unplug the power cord.
2. Move the jumper cap from pins 1-2 (default) to pins 2-3. Keep the cap on pins 2-3 for about 5-10 seconds, then move the cap back to pins 1-2.
3. Plug the power cord and turn ON the computer.
4. Hold down the **<Del>** key during the boot process and enter BIOS setup to re-enter data.



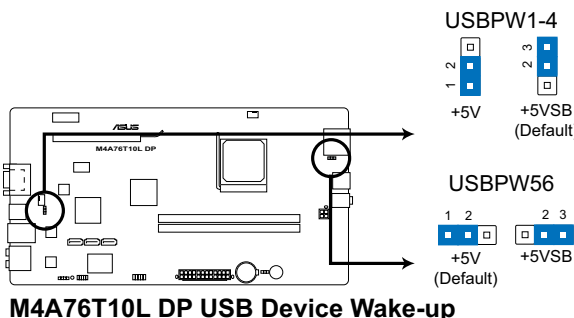
Except when clearing the RTC RAM, never remove the cap on CLRTC jumper default position. Removing the cap will cause system boot failure!



- If the steps above do not help, remove the onboard battery and move the jumper again to clear the CMOS RTC RAM data. After clearing the CMOS, reinstall the battery.
- You do not need to clear the RTC when the system hangs due to overclocking. For system failure due to overclocking, use the CPU Parameter Recall (C.P.R.) feature. Shut down and reboot the system, then the BIOS automatically resets parameter settings to default values.

## 2. USB device wake-up (3-pin USBPW1-4, USBPW56)

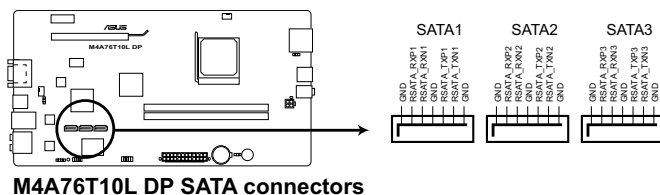
Set these jumpers to +5V to wake up the computer from S1 sleep mode (CPU stopped, DRAM refreshed, system running in low power mode) using the connected USB devices. Set these jumpers to +5VSB to wake up the computer from S3 and S4 sleep modes (no power to CPU, DRAM in slow refresh, power supply in reduced power mode).



## 3.4 Connectors

### 1. Serial ATA connectors (7-pin SATA1, SATA2, SATA3)

These connectors are for the Serial ATA signal cables for Serial ATA 3Gb/s hard disk and optical disk drives. The Serial ATA 3Gb/s is backward compatible with Serial ATA 1.5Gb/s specification. The data transfer rate of the Serial ATA 3Gb/s is faster than the standard parallel ATA with 133 MB/s (Ultra DMA133).



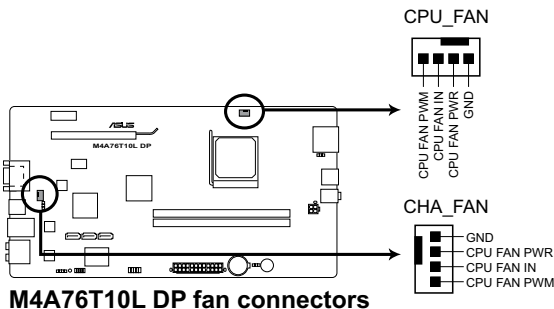
Install the Windows® XP Service Pack 2 or later version before using Serial ATA.

## 2. CPU and chassis fan connectors (4-pin CPU\_FAN, 4-pin CHA\_FAN)

Connect the fan cables to the fan connectors on the motherboard, ensuring that the black wire of each cable matches the ground pin of the connector.



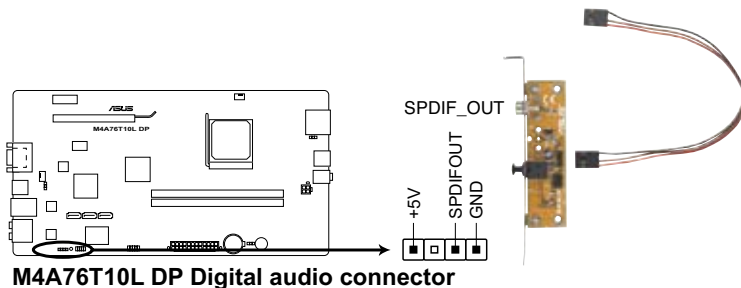
**DO NOT** forget to connect the fan cables to the fan connectors. Insufficient air flow inside the system may damage the motherboard components. These are not jumpers! **DO NOT** place jumper caps on the fan connectors!



Only the 4-pin CPU fan supports the ASUS Q-Fan feature.

## 3. Digital Audio connector (4-1 pin SPDIF\_OUT)

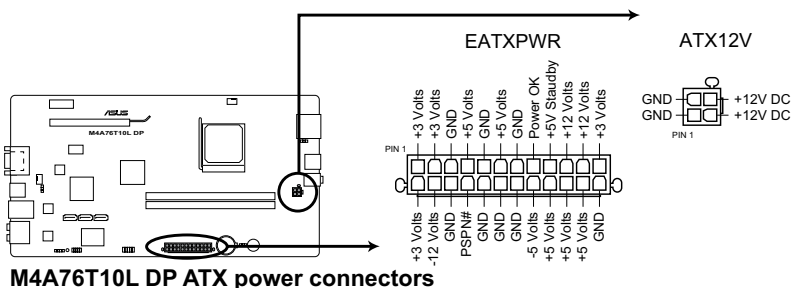
This connector is for the S/PDIF audio module to allow digital sound output. Connect one end of the S/PDIF audio cable to this connector and the other end to the S/PDIF module.



The S/PDIF out module is purchased separately.

#### 4. ATX power connectors (24-pin EATXPWR, 4-pin ATX12V)

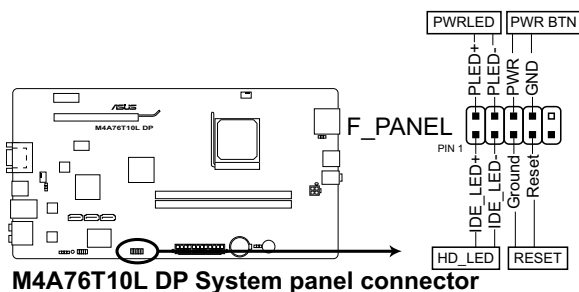
These connectors are for ATX power supply plugs. The power supply plugs are designed to fit these connectors in only one orientation. Find the proper orientation and push down firmly until the connectors completely fit.



- For a fully configured system, we recommend that you use a power supply unit (PSU) that complies with ATX 12 V Specification 2.0 (or later version) and provides a minimum power of 200W~250W.
- **DO NOT** forget to connect the 4-pin ATX12V power plug; otherwise, the system will not boot.
- Use of a PSU with a higher power output is recommended when configuring a system with more power-consuming devices. The system may become unstable or may not boot up if the power is inadequate.
- The ATX 12 V Specification 2.0-compliant (200W~250W) PSU has been tested to support the motherboard power requirements.

## 5. System panel connector (10-1 pin F\_PANEL)

This connector supports several chassis-mounted functions.



- **System power LED (2-pin PLED)**

This 2-pin connector is for the system power LED. Connect the chassis power LED cable to this connector. The system power LED lights up when you turn on the system power, and blinks when the system is in sleep mode.

- **Hard disk drive activity LED (2-pin HDLED)**

This 2-pin connector is for the HDD Activity LED. Connect the HDD Activity LED cable to this connector. The IDE LED lights up or flashes when data is read from or written to the HDD.

- **Power/Soft-off button (2-pin PWRBTN)**

This 2-pin connector is for the system power button.

- **Reset button (2-pin RESET)**

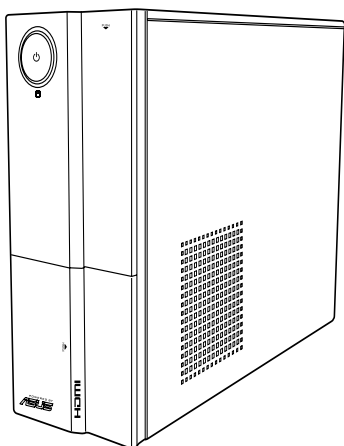
This 2-pin connector is for the chassis-mounted reset button for system reboot without turning off the system power.





# Chapter 4

This chapter tells how to change system settings through the BIOS Setup menus and describes the BIOS parameters.



## BIOS setup

## 4.1 Managing and updating your BIOS

The following utilities allow you to manage and update the motherboard Basic Input/Output System (BIOS) setup.

1. **ASUS Update:** Updates the BIOS in Windows® environment.
2. **ASUS EZ Flash 2:** Updates the BIOS using a USB flash drive.
3. **ASUS CrashFree BIOS 3:** Restores the BIOS using the motherboard support DVD or a USB flash drive when the BIOS file fails or gets corrupted.

Refer to the corresponding sections for details on these utilities.



---

Save a copy of the original motherboard BIOS file to a USB flash drive in case you need to restore the BIOS in the future. Copy the original motherboard BIOS using the **ASUS Update** utility.

---

### 4.1.1 ASUS Update utility

The ASUS Update is a utility that allows you to manage, save, and update the motherboard BIOS in Windows® environment. The ASUS Update utility allows you to:

- Save the current BIOS file
- Download the latest BIOS file from the Internet
- Update the BIOS from an updated BIOS file
- Update the BIOS directly from the Internet
- View the BIOS version information

This utility is available in the support DVD that comes with the motherboard package.



---

ASUS Update requires an Internet connection either through a network or an Internet Service Provider (ISP).

---

### Installing ASUS Update

To install ASUS Update:

1. Place the support DVD in the optical drive.
2. From the **Main** menu, click the **Utilities** tab, and then click **ASUS Update Vx.xx.xx**.
3. The ASUS Update utility is copied to your system.

### Updating the BIOS through the Internet



---

Quit all Windows® applications before you update the BIOS using this utility.

---

To update the BIOS through the Internet

1. From the Windows® desktop, click **Start > Programs > ASUS > ASUSUpdate > ASUSUpdate**. The ASUS Update main window appears.
2. Select **Update BIOS from the Internet** from the drop-down menu, and then click **Next**.



3. Select the ASUS FTP site nearest you to avoid network traffic, or click **Auto Select**. Click **Next**.
4. From the FTP site, select the BIOS version that you wish to download. Click **Next**.



5. Follow the onscreen instructions to complete the update process.

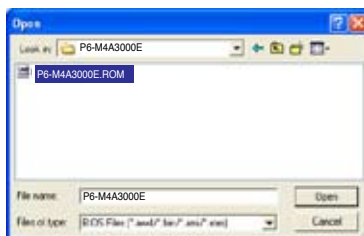


The ASUS Update utility is capable of updating itself through the Internet. Always update the utility to avail all its features.

## Updating the BIOS through a BIOS file

To update the BIOS through a BIOS file

1. From the Windows® desktop, click **Start > Programs > ASUS > ASUSUpdate > ASUSUpdate**. The ASUS Update main window appears.
2. Select **Update BIOS from a file** from the dropdown menu, then click **Next**.
3. Locate the BIOS file from the Open window, then click **Open**.
4. Follow the onscreen instructions to complete the update process.



Ensure to load the BIOS default settings to ensure system compatibility and stability. Select the **Load Setup Defaults** item under the **Exit** menu. Refer to section **4.8 Exit Menu** for details.

### 4.1.2 ASUS EZ Flash 2

The ASUS EZ Flash 2 feature allows you to update the BIOS without using an OS-based utility.

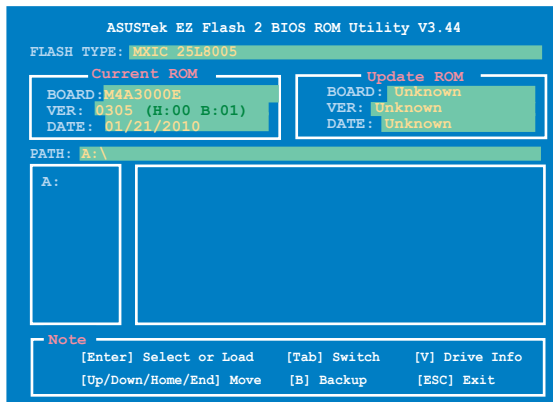


Before you start using this utility, download the latest BIOS file from the ASUS website at [www.asus.com](http://www.asus.com).

To update the BIOS using EZ Flash 2:

1. Insert the USB flash disk that contains the latest BIOS file to the USB port, then launch EZ Flash 2 in any of these two ways:
  - Press **<Alt> + <F2>** during POST.
  - Enter the BIOS setup program. Go to the **Tools** menu to select **EZ Flash 2** and press **<Enter>** to enable it.

Press **<Tab>** to switch between drives until the correct BIOS file is found.



2. When the correct BIOS file is found, EZ Flash 2 performs the BIOS update process and automatically reboots the system when done.



- This function supports USB flash disks with **FAT 32/16** format and single partition only.
- DO NOT shut down or reset the system while updating the BIOS to prevent system boot failure!

### 4.1.3 ASUS CrashFree BIOS

The ASUS CrashFree BIOS is an auto recovery tool that allows you to restore the BIOS file when it fails or gets corrupted during the updating process. You can restore a corrupted BIOS file using the motherboard support DVD or a removable device that contains the updated BIOS file.



- Before using this utility, rename the BIOS file in the removable device into **M4A3000E.ROM**.
- The BIOS file in the support DVD may not be the latest version. Download the latest BIOS file from the ASUS website at [www.asus.com](http://www.asus.com).
- The removable devices that ASUS CrashFree BIOS support vary with motherboard models. For motherboards without the floppy connector, prepare a USB flash disk before using this utility.

### Recovering the BIOS

To recover the BIOS:

1. Turn on the system.
2. Insert the support DVD to the optical drive or the removable device that contains the BIOS file to the USB port or to the floppy disk drive, if supported.
3. The utility automatically checks the devices for the BIOS file. When found, the utility reads the BIOS file and starts flashing the corrupted BIOS file.
4. Turn off the system after the utility completes the updating process and turn on again.



DO NOT shut down or reset the system while updating the BIOS! Doing so can cause system boot failure!



Ensure to load the BIOS default settings to ensure system compatibility and stability. Select the **Load Setup Defaults** item under the Exit menu. Refer to section **4.8 Exit menu** for details.

## 4.2 BIOS setup program

Use the BIOS Setup program to update the BIOS or configure its parameters. The BIOS screens include navigation keys and brief online help to guide you in using the BIOS Setup program.

### Entering BIOS Setup at startup

To enter BIOS Setup at startup:

- Press <Delete> during the Power-On Self Test (POST). If you do not press <Delete>, POST continues with its routines.

### Entering BIOS Setup after POST

To enter BIOS Setup after POST:

- Press <Ctrl>+<Alt>+<Del> simultaneously.
- Press the reset button on the system chassis.
- Press the power button to turn the system off then back on. Do this option only if you failed to enter BIOS Setup using the first two options.



---

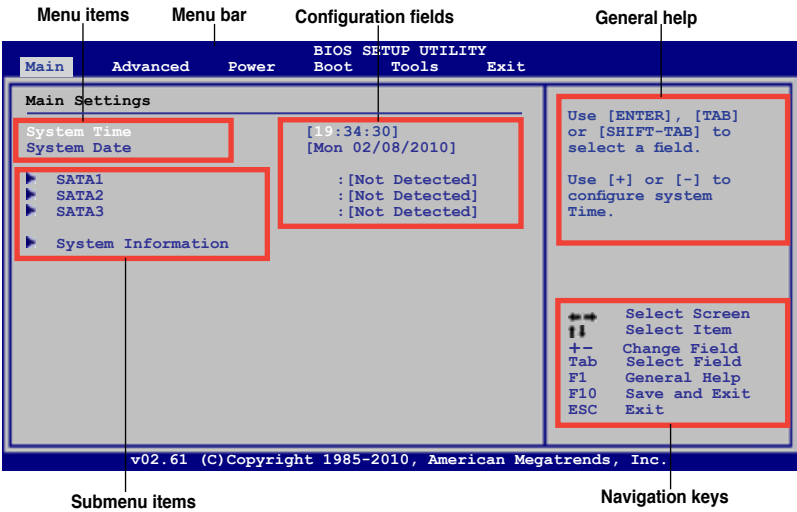
Using the **power button**, **reset button**, or the <Ctrl>+<Alt>+<Del> keys to force reset from a running operating system can cause damage to your data or system. We recommend that you always shut down the system properly from the operating system.

---



- 
- The default BIOS settings for this motherboard apply to most conditions to ensure optimum performance. If the system becomes unstable after changing any BIOS settings, load the default settings to ensure system compatibility and stability. Select the **Load Setup Defaults** item under the **Exit** menu. See section **4.8 Exit Menu**.
  - The BIOS setup screens in this chapter are for reference only. They may not exactly match what you see on your screen.
  - Visit the ASUS website at [www.asus.com](http://www.asus.com) to download the latest BIOS file for this motherboard.
-

# 4.2.1 BIOS menu screen



# 4.2.2 Menu bar

The menu bar on top of the screen has the following main items:

- Main** For changing the basic system configuration
- Advanced** For changing the advanced system settings
- Power** For changing the advanced power management (APM) configuration
- Boot** For changing the system boot configuration
- Tools** For configuring options for special functions
- Exit** For selecting the exit options and loading default settings

To select an item on the menu bar, press the right or left arrow key on the keyboard until the desired item is highlighted.

# 4.2.3 Navigation keys

At the bottom right corner of a menu screen are the navigation keys for that particular menu. Use the navigation keys to select items in the menu and change the settings.



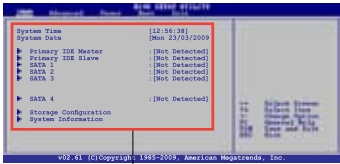
Some of the navigation keys differ from one screen to another.



### 4.2.4 Menu items

The highlighted item on the menu bar displays the specific items for that menu. For example, selecting Main shows the Main menu items.

The other items (Advanced, Power, Boot, Tool, and Exit) on the menu bar have their respective menu items.



Main menu items

### 4.2.5 Sub-menu items

A solid triangle before each item on any menu screen means that the item has a sub-menu. To display the sub-menu, select the item and press <Enter>.

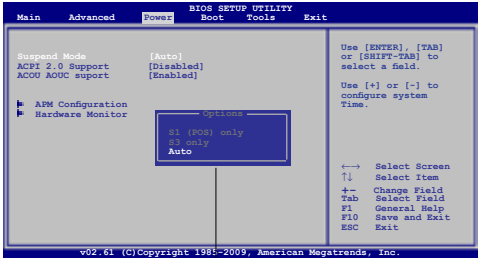
### 4.2.6 Configuration fields

These fields show the values for the menu items. If an item is user-configurable, you can change the value of the field opposite the item. You cannot select an item that is not user-configurable.

A configurable field is enclosed in brackets, and is highlighted when selected. To change the value of a field, select it then press <Enter> to display a list of options. Refer to 4.2.7 Pop-up window.

### 4.2.7 Pop-up window

Select a menu item then press <Enter> to display a pop-up window with the configuration options for that item.



Pop-up window

### 4.2.8 Scroll bar

A scroll bar appears on the right side of a menu screen when there are items that do not fit on the screen. Press the Up/Down arrow keys or <Page Up> /<Page Down> keys to display the other items on the screen.

### 4.2.9 General help

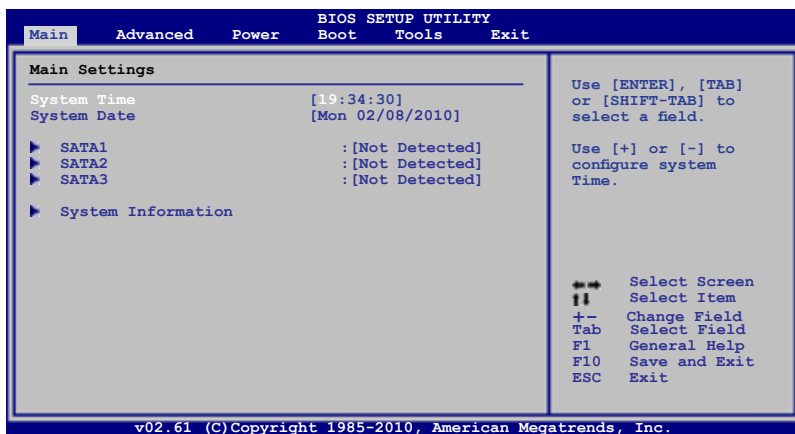
At the top right corner of the menu screen is a brief description of the selected item.

## 4.3 Main menu

When you enter the BIOS Setup program, the Main menu screen appears, giving you an overview of the basic system information.



Refer to section 4.2.1 **BIOS menu screen** for information on the menu screen items and how to navigate through them.



### 4.3.1 System Time [xx:xx:xx]

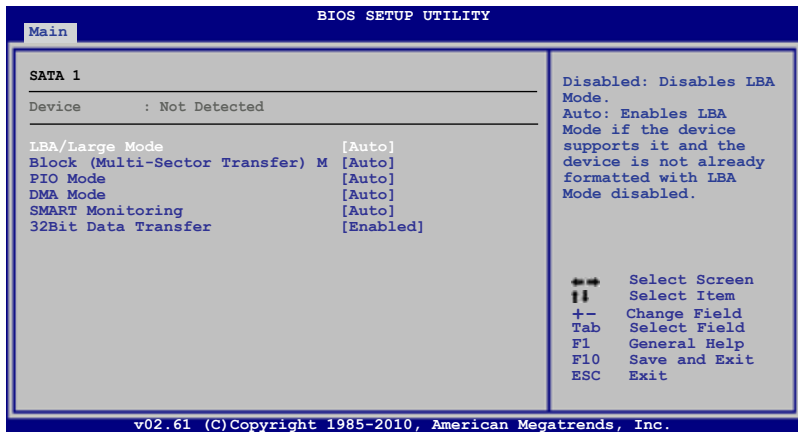
Allows you to set the system time.

### 4.3.2 System Date [Day xx/xx/xxxx]

Allows you to set the system date.

### 4.3.3 SATA1~3

While entering Setup, the BIOS automatically detects the presence of SATA devices. There is a separate sub-menu for each SATA device. Select a device item then press <Enter> to display the SATA device information.



The BIOS automatically detects the values opposite the dimmed items (Device, Vendor, Size, LBA Mode, Block Mode, PIO Mode, Async DMA, Ultra DMA, and SMART monitoring). These values are not user-configurable. These items show Not Detected if no SATA device is installed in the system.

#### LBA/Large Mode [Auto]

Enables or disables the LBA mode. Setting this item to **[Auto]** enables the LBA mode if the device supports this mode, and if the device was not previously formatted with LBA mode disabled. Configuration options: [Disabled] [Auto]

#### Block (Multi-Sector Transfer) M [Auto]

Enables or disables data multi-sectors transfers. When this item is set to **[Auto]**, the data transfer from and to the device occurs multiple sectors at a time if the device supports multi-sector transfer feature. When this item is set to **[Disabled]**, the data transfer from and to the device occurs one sector at a time. Configuration options: [Disabled] [Auto]

#### PIO Mode [Auto]

Selects the PIO mode. Configuration options: [Auto] [0] [1] [2] [3] [4]

#### DMA Mode [Auto]

Selects the DMA mode. Configuration options: [Auto]

## SMART Monitoring [Auto]

Sets the Smart Monitoring, Analysis, and Reporting Technology.

Configuration options: [Auto] [Disabled] [Enabled]

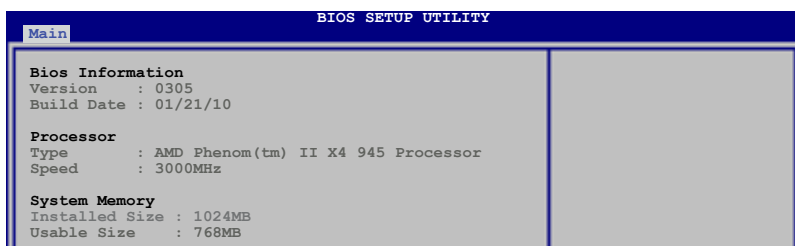
## 32Bit Data Transfer [Enabled]

Enables or disables 32-bit data transfer.

Configuration options: [Disabled] [Enabled]

### 4.3.4 System Information

This menu gives you an overview of the general system specifications. The BIOS automatically detects the items in this menu.



#### BIOS Information

Displays the auto-detected BIOS information.

#### Processor

Displays the auto-detected CPU specification.

#### System Memory

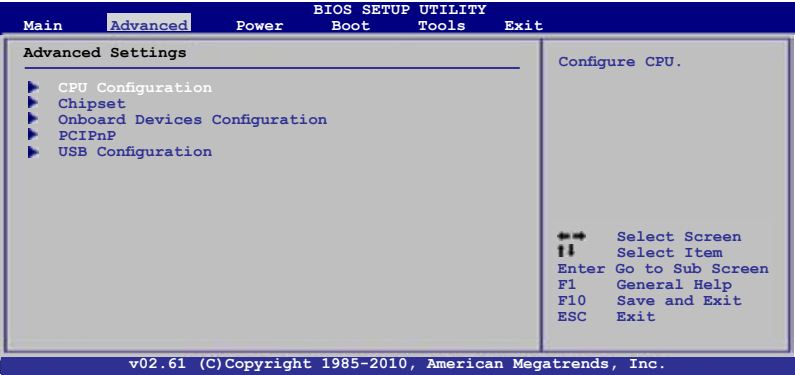
Displays the auto-detected system memory.

# 4.4 Advanced menu

The Advanced menu items allow you to change the settings for the CPU and other system devices.

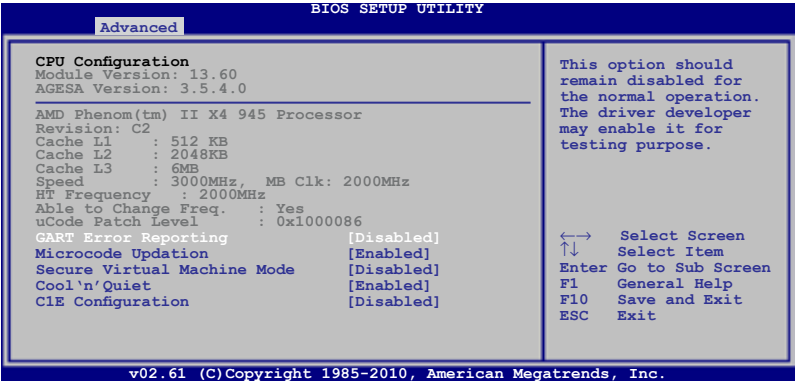


Take caution when changing the settings of the Advanced menu items. Incorrect field values can cause the system to malfunction.



## 4.4.1 CPU Configuration

The items in this menu show the CPU-related information that the BIOS automatically detects.



### GART Error Reporting [Disabled]

This option should remain disabled for the normal operation. The driver developer may enable it for testing purpose. Configuration options: [Disabled] [Enabled]

### Microcode Updation [Enabled]

Enables or disables Microcode Updation. Configuration options: [Disabled] [Enabled]

### Secure Virtual Machine Mode [Disabled]

Enables or disables Secure Virtual Machine Mode (SVM). Configuration options: [Disabled] [Enabled]

### Cool 'n' Quiet [Enabled]

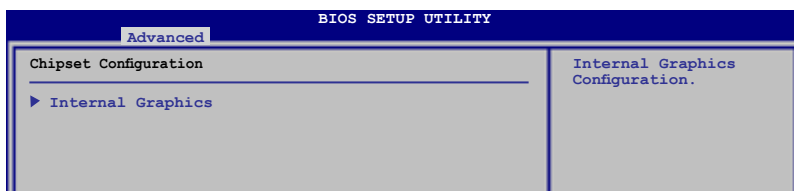
Enables or disables the AMD® Cool 'n' Quiet technology. Configuration options: [Enabled] [Disabled]

### C1E Configuration [Disabled]

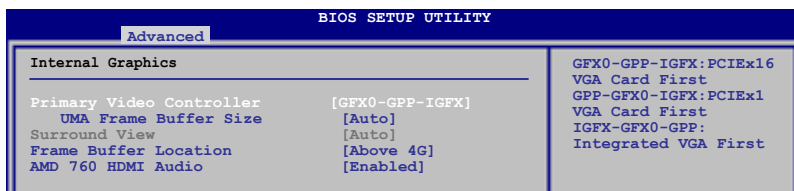
Enables or disables the CPU Enhanced Halt (C1E) function, a CPU power-saving function in system halt state. When this item is enabled, the CPU core frequency and voltage will be reduced during the system halt state to decrease power consumption. Configuration options: [Disabled] [Enabled]

## 4.4.2 Chipset

The Chipset menu allows you to change the advanced chipset settings. Select an item then press <Enter> to display the sub-menu.



### Internal Graphics



## Internal Graphics

### Primary Video Controller [GFX0-GPP-IGFX]

Selects the primary display adapter. Configuration options: [GFX0-GPP-IGFX]  
[GPP-GFX0-IGFX] [IGFX-GFX0-GPP]



---

GFX0: primary video controller on a PCIe x16 slot  
GPP: primary video controller on a PCIe x1 slot  
IGFX: onboard display output port

---

### UMA Frame Buffer Size [Auto]

Selects the UMA frame buffer size. Configuration options: [Auto] [32MB]  
[64MB] [128MB] [256MB] [512MB] [1GB]



- 
- The **[512MB]** option only appears when you install 1GB system memory or more.
  - The **[1GB]** option only appears when you install 2GB system memory or more.
- 

### Surround View [Auto]

Disables or enables the Surround View function. Configuration options: [Auto]  
[Disabled] [Enabled]



---

This item becomes user-configurable when you install an ATI graphics card into the PCIe x16 slot.

---

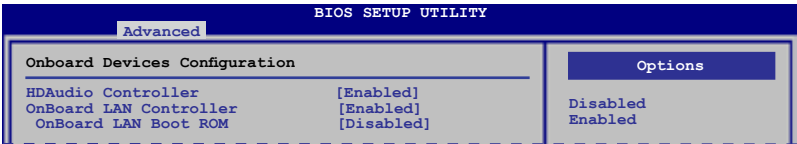
### Frame Buffer Location [Above 4G]

Configuration options: [Below 4G] [Above 4G]

### AMD 760 HDMI Audio [Enabled]

Disables or enables the AMD 760 HDMI audio. Configuration options: [Disabled]  
[Enabled]

### 4.4.3 Onboard Devices Configuration



#### HDAudio Controller [Enabled]

Enables or disables the high definition audio controller. Configuration options: [Enabled] [Disabled]

#### OnBoard LAN Controller [Enabled]

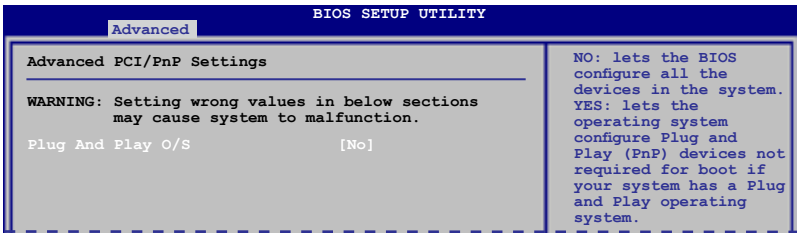
Allows you to enable or disable the onboard LAN controller. Configuration options: [Enabled] [Disabled]

##### OnBoard LAN Boot ROM [Disabled]

Allows you to enable or disable the boot ROM in the onboard LAN controller. This item appears only when the Onboard LAN Controller item is set to Enabled. Configuration options: [Disabled] [Enabled]

### 4.4.4 PCIPnP

The PCI PnP menu items allow you to change the advanced settings for PCI/PnP devices. The menu includes setting IRQ and DMA channel resources for either PCI/PnP or legacy ISA devices, and setting the memory size block for legacy ISA devices.



Take caution when changing the settings of the PCI PnP menu items. Incorrect field values can cause the system to malfunction.

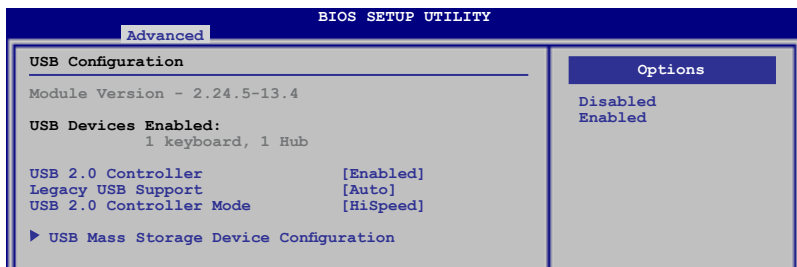
#### Plug and Play O/S [No]

When set to [No], BIOS configures all the devices in the system. When set to [Yes] and if you install a Plug and Play operating system, the operating system configures the Plug and Play devices not required for boot. Configuration options: [No] [Yes]



## 4.4.5 USB Configuration

The items in this menu allows you to change the USB-related features. Select an item then press <Enter> to display the configuration options.



The Module Version and USB Devices Enabled items show the auto-detected values. If no USB device is detected, the item shows **None**.

### USB 2.0 Controller [Enabled]

Allows you to enable or disable USB 2.0 controller.

Configuration options: [Enabled] [Disabled]

### Legacy USB Support [Auto]

Allows you to enable or disable support for Legacy USB storage devices, including USB flash drives and USB hard drives. Setting to **[Auto]** allows the system to detect the presence of USB devices at startup. If detected, the USB controller legacy mode is enabled. If no USB device is detected, the legacy USB support is disabled. Configuration options: [Disabled] [Enabled] [Auto]

### USB 2.0 Controller Mode [HiSpeed]

Allows you to configure the USB 2.0 controller in HiSpeed (480Mbps) or Full Speed (12Mbps). Configuration options: [FullSpeed] [HiSpeed]



The following items may only appear when a USB storage device is plugged.

### USB Mass Storage Device Configuration

#### USB Mass Storage Reset Delay [20 Sec]

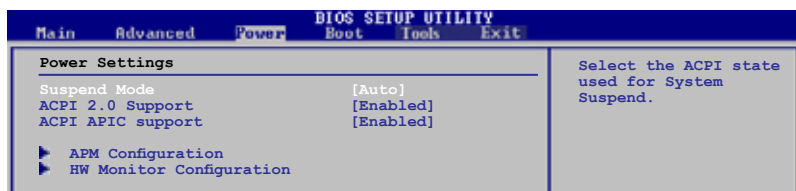
Allows you to set the maximum time that the BIOS waits for the USB storage device to initialize. Configuration options: [10 Sec] [20 Sec] [30 Sec] [40 Sec]

#### Emulation Type [Auto]

Allows you to select the emulation type. Configuration options: [Auto] [Floppy] [Forced FDD] [Hard Disk] [CDROM]

## 4.5 Power menu

The Power menu items allow you to change the settings for the Advanced Configuration and Power Interface (ACPI) and the Advanced Power Management (APM). Select an item then press <Enter> to display the configuration options.



### 4.5.1 Suspend Mode [Auto]

Allows you to select the Advanced Configuration and Power Interface (ACPI) state to be used for system suspend. Configuration options: [S1 (POS) Only] [S3 Only] [Auto]

**[S1(POS) Only]** - Enables the system to enter the ACPI S1 (Power on Suspend) sleep state. In S1 sleep state, the system appears suspended and stays in a low power mode. The system can be resumed at any time.

**[S3 Only]** - Enables the system to enter the ACPI S3 (Suspend to RAM) sleep state (default). In S3 sleep state, the system appears to be off and consumes less power than in the S1 state. When signaled by a wake-up device or event, the system resumes to its working state exactly where it was left off.

**[Auto]** - Detected by OS.

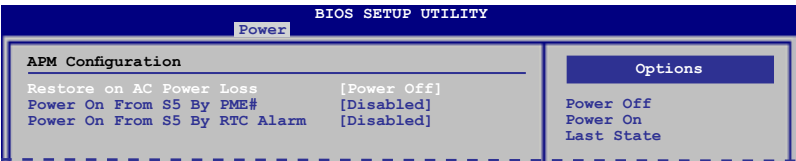
### 4.5.2 ACPI 2.0 Support [Enabled]

Allows you to add more tables for Advanced Configuration as per ACPI 2.0 specifications. Configuration options: [Disabled] [Enabled]

### 4.5.3 ACPI APIC Support [Enabled]

Allows you to enable or disable the Advanced Configuration and Power Interface (ACPI) support in the Application-Specific Integrated Circuit (ASIC). When set to Enabled, the ACPI APIC table pointer is included in the RSDT pointer list. Configuration options: [Disabled] [Enabled]

### 4.5.4 APM Configuration



#### Restore on AC Power Loss [Power Off]

When set to [Power Off], the system goes into off state after an AC power loss.  
When set to [Power On], the system goes on after an AC power loss. When set to [Last State], the system goes into either off or on state, whatever the system state was before the AC power loss. Configuration options: [Power Off] [Power On] [Last State]

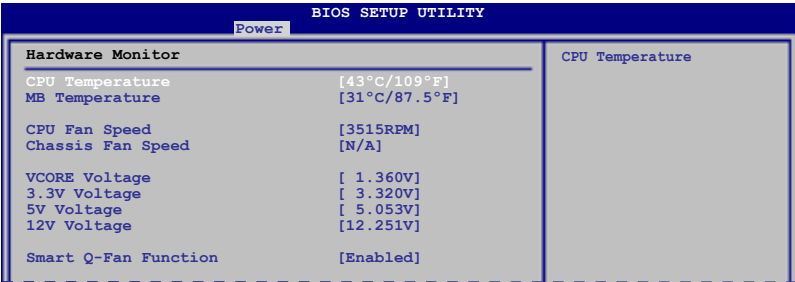
#### Power on From S5 By PME# [Disabled]

Enables or disables PME wake from sleep states.  
Configuration options: [Disabled] [Enabled]

#### Power on From S5 By RTC Alarm [Disabled]

Enables or disables RTC to generate a wake event.  
Configuration options: [Disabled] [Enabled]

### 4.5.5 Hardware Monitor



#### CPU Temperature [xxx°C/xxx°F]

#### MB Temperature [xxx°C/xxx°F]

The onboard hardware monitor automatically detects and displays the CPU / MB temperature. Select Ignored if you do not wish to display the detected temperature.

### **CPU Fan Speed (RPM) [xxxxRPM] or [N/A] or [Ignored]** **Chassis Fan Speed (RPM) [xxxxRPM] or [N/A] or [Ignored]**

The onboard hardware monitor automatically detects and displays the CPU/chassis fan speed in rotations per minute (RPM). If the fan is not connected to the motherboard, the field shows N/A. Select Ignored if you do not wish to display the detected speed.

### **VCORE Voltage, 3.3V Voltage, 5V Voltage, 12V Voltage**

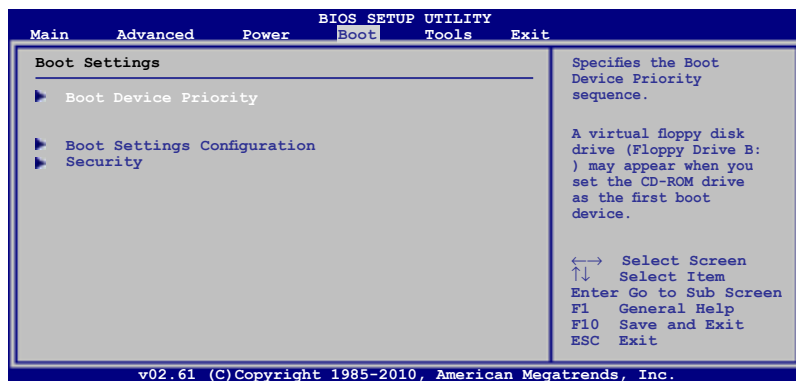
The onboard hardware monitor automatically detects the voltage output through the onboard voltage regulators.

### **Smart Q-Fan Function [Enabled]**

Allows you to enable or disable the ASUS Q-Fan feature that smartly adjusts the fan speeds for more efficient system operation. Configuration options: [Disabled] [Enabled]

## **4.6 Boot menu**

The Boot menu items allow you to change the system boot options. Select an item then press <Enter> to display the sub-menu.



## 4.6.1 Boot Device Priority

BIOS SETUP UTILITY		
Boot		
Boot Device Priority		Specifies the boot sequence from the available devices.
1st Boot Device	[Hard Drive]	
2nd Boot Device	[ATAPI CD-ROM]	
3rd Boot Device	[Removable Dev.]	

### 1st ~ xxth Boot Device [Removable]

These items specify the boot device priority sequence from the available devices. The number of device items that appears on the screen depends on the number of devices installed in the system.

Configuration options: [Removable Dev.] [Hard Drive] [ATAPI CD-ROM] [Disabled]



- To select the boot device during system startup, press <F8> when ASUS Logo appears.
- To access Windows® OS in Safe Mode, do any of the following:
  - Press <F5> when ASUS Logo appears
  - Press <F8> after POST.

## 4.6.2 Boot Settings Configuration

BIOS SETUP UTILITY		
Boot		
Boot Settings Configuration		Allows BIOS to skip certain tests while booting. This will decrease the time needed to boot the system.
Quick Boot	[Enabled]	
Full Screen Logo	[Enabled]	
AddOn ROM Display Mode	[Force BIOS]	
Bootup Num-Lock	[On]	
Wait For 'F1' If Error	[Enabled]	
Hit 'DEL' Message Display	[Enabled]	

### Quick Boot [Enabled]

Enabling this item allows the BIOS to skip some power on self tests (POST) while booting to decrease the time needed to boot the system. When set to [Disabled], BIOS performs all the POST items. Configuration options: [Disabled] [Enabled]

### Full Screen Logo [Enabled]

This allows you to enable or disable the full screen logo display feature. Configuration options: [Disabled] [Enabled]



Set this item to **[Enabled]** to use the ASUS MyLogo 2™ feature.

## Add On ROM Display Mode [Force BIOS]

Sets the display mode for option ROM. Configuration options: [Force BIOS] [Keep Current]

## Bootup Num-Lock [On]

Allows you to select the power-on state for the NumLock.

Configuration options: [Off] [On]

## Wait for 'F1' If Error [Enabled]

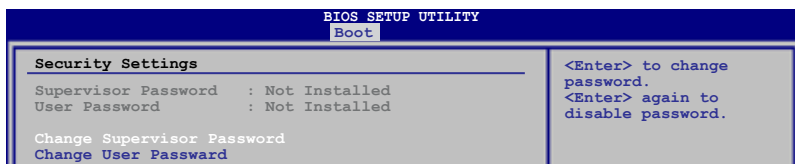
When set to Enabled, the system waits for the F1 key to be pressed when error occurs. Configuration options: [Disabled] [Enabled]

## Hit 'DEL' Message Display [Enabled]

When set to Enabled, the system displays the message "Press DEL to run Setup" during POST. Configuration options: [Disabled] [Enabled]

## 5.6.3 Security

The Security menu items allow you to change the system security settings. Select an item then press <Enter> to display the configuration options.



### Change Supervisor Password

Select this item to set or change the supervisor password. The **Supervisor Password** item on top of the screen shows the default **Not Installed**. After you set a password, this item shows **Installed**.

To set a Supervisor Password:

1. Select the **Change Supervisor Password** item and press <Enter>.
2. In the password box, key in a password containing up to six letters or numbers, or both, then press <Enter>.
3. Confirm the password when prompted.

The message **Password Installed** appears after you successfully set your password.

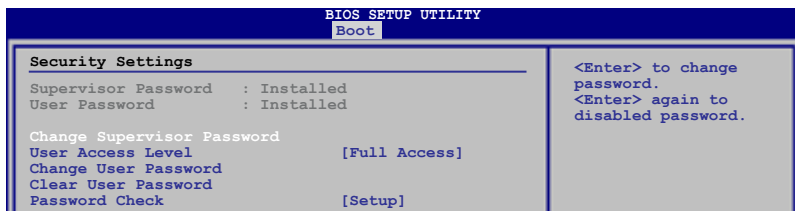
To change the supervisor password, follow the same steps in setting a supervisor password.

To clear the supervisor password, select the **Change Supervisor Password** then press **<Enter>** twice. The message **Password uninstalled** appears.



If you forget your BIOS password, you can clear it by erasing the CMOS Real Time Clock (RTC) RAM. See section **3.3 Jumpers** for information on how to erase the RTC RAM.

After you have set a supervisor password, the other items appear to allow you to change other security settings.



### User Access Level [Full Access]

This item allows you to select the access restriction to the Setup items. Configuration options: [No Access] [View Only] [Limited] [Full Access]

**[No Access]** - prevents user access to the Setup utility.

**[View Only]** - allows access but does not allow change to any field.

**[Limited]** - allows changes only to selected fields, such as Date and Time.

**[Full Access]** - allows viewing and changing all the fields in the Setup utility.

### Change User Password

Select this item to set or change the user password. The **User Password** item on top of the screen shows the default **Not Installed**. After you set a password, this item shows **Installed**.

To set a User Password:

1. Select the **Change User Password** item and press **<Enter>**.
2. In the password box, key in a password containing up to six letters or numbers, or both, then press **<Enter>**.
3. Confirm the password when prompted.

The message **Password Installed** appears after you set your password successfully.

To change the user password, follow the same steps in setting a user password.

## Clear User Password

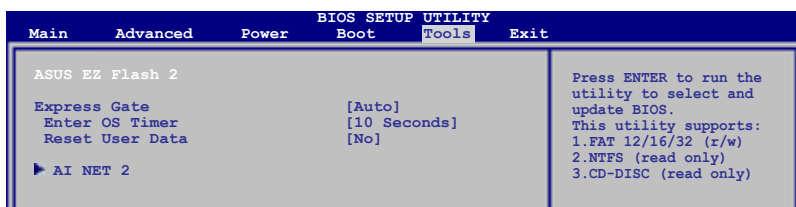
Select this item to clear the user password.

## Password Check [Setup]

When set to **[Setup]**, BIOS checks for user password when accessing the Setup utility. When set to **[Always]**, BIOS checks for user password both when accessing Setup and booting the system. Configuration options: [Setup] [Always]

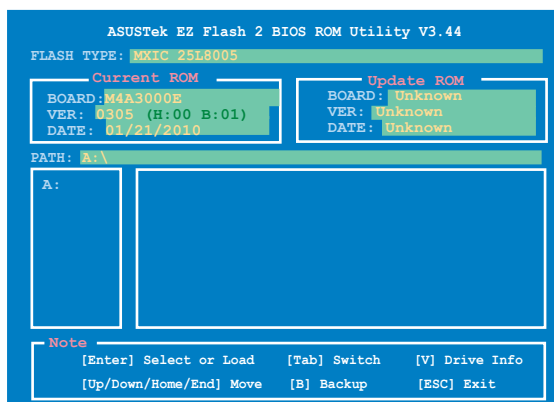
## 4.7 Tools menu

The Tools menu items allow you to configure options for special functions. Select an item then press <Enter> to display the submenu.



### 4.7.1 ASUS EZ Flash 2

Allows you to run ASUS EZ Flash 2. When you press <Ok>, a confirmation message appears. Use the left/right arrow key to select between [Yes] or [No], then press <Ok> to confirm your choice.





### 4.7.2 Express Gate [Auto]

Allows you to enable or disable the ASUS Express Gate feature. The ASUS Express Gate feature is a unique instant-on environment that provides quick access to the Internet browser and Skype. Configuration options: [Enabled] [Disabled] [Auto]

#### Enter OS Timer [10 Seconds]

Sets countdown duration that the system waits at the Express Gate's first screen before starting Windows or other installed OS. Choose **[Prompt User]** to stay at the first screen of Express Gate for user action. Configuration options: [Prompt User] [1 second] [3 seconds] [5 seconds] [10 seconds] [15 seconds] [20 seconds] [30 seconds]

#### Reset User Data [No]

Allows you to clear Express Gate's user data. Configuration options: [No] [Reset]

When setting this item to **[Reset]**, ensure to save the setting to the BIOS so that the user data will be cleared the next time you enter the Express Gate. User data includes the Express Gate's settings as well as any personal information stored by the web browser (bookmarks, cookies, browsing history, etc.). This is useful in the rare case where corrupt settings prevent the Express Gate environment from launching properly.



---

The first time wizard will run again when you enter the Express Gate environment after clearing its settings.

---

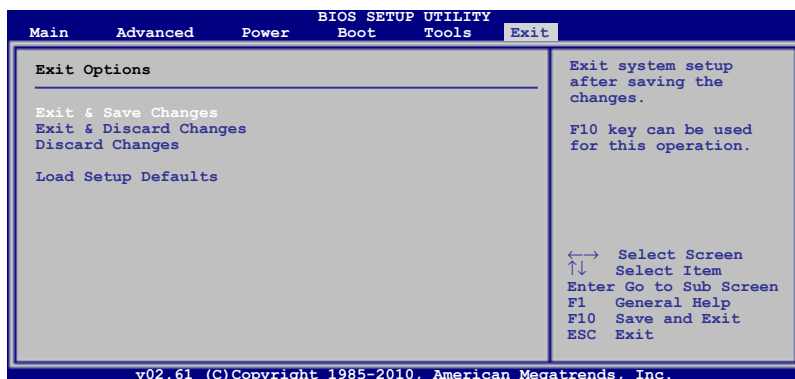
### 4.7.3 AI NET 2

#### **Check Realtek LAN cable [Disabled]**

Enables or disables checking of the Realtek LAN cable during the Power-On Self-Test (POST). Configuration options: [Disabled] [Enabled]

## 4.8 Exit menu

The Exit menu items allow you to load the optimal or failsafe default values for the BIOS items, and save or discard your changes to the BIOS items.



Pressing <Esc> does not immediately exit this menu. Select one of the options from this menu or <F10> from the legend bar to exit.

### Exit & Save Changes

Once you are finished making your selections, choose this option from the Exit menu to ensure the values you selected are saved to the CMOS RAM. An onboard backup battery sustains the CMOS RAM so it stays on even when the PC is turned off. When you select this option, a confirmation window appears. Select **Ok** to save changes and exit.

### Exit & Discard Changes

Select this option only if you do not want to save the changes that you made to the Setup program. If you made changes to fields other than System Date, System Time, and Password, the BIOS asks for a confirmation before exiting.

### Discard Changes

This option allows you to discard the selections you made and restore the previously saved values. After selecting this option, a confirmation appears. Select **Ok** to discard any changes and load the previously saved values.

### Load Setup Defaults

This option allows you to load the default values for each of the parameters on the Setup menus. When you select this option or if you press <F5>, a confirmation window appears. Select **Ok** to load default values. Select **Exit & Save Changes** or make other changes before saving the values to the non-volatile RAM.

<b>Manufacturer:</b>	ASUSTeK Computer Inc.
<b>Address:</b>	No. 150, LI-DE RD., PEITOU, TAIPEI 112, TAIWAN
<b>Authorised representative in Europe:</b>	ASUS Computer GmbH
<b>Address:</b>	HARKORT STR. 21-23, 40880 RATINGEN, GERMANY