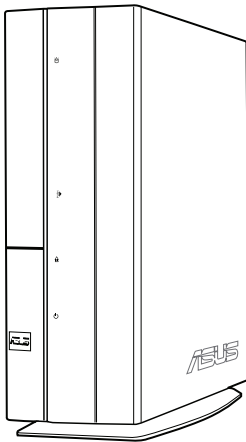


ASUS[®]

P-Series

ASUS PC (Desktop Barebone)

Installation manual



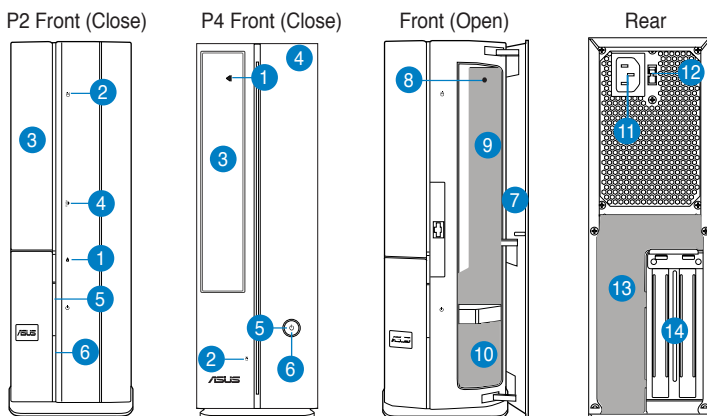
P2



P4

Download the latest manual from the ASUS website: www.asus.com

Front/Rear panel features

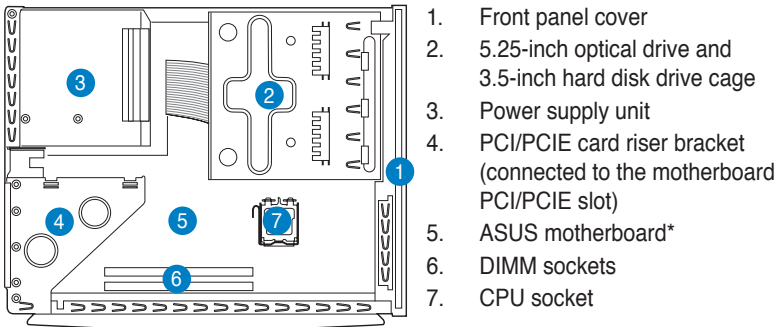


1. Optical drive eject button (▲)
2. HDD LED (💡)
3. Optical drive bay cover
4. Open the front panel cover
5. Power button (🔌)
6. Power LED (💡)
7. Front panel cover
8. Reset button (🔌)
- 9.*
 - MS/MS Pro card slot (📠_{MS,MS/PRO})
 - CF card slot (📠_{CF})
 - SD/MMC card slot (📠_{SD})
 - MS/MS Pro/SD/MMC card slot (📠)
 - 6-pin IEEE 1394a port (🔌₁₃₉₄)
 - S/PDIF In port (🔌_{S/PDIF})
 - ESATA/USB port (🔌_{ESATA/USB})
 - USB + ESATA/USB port (🔌_{USB+ESATA/USB})
 - Infrared Receiver (📡_{IR})
- 10.*
 - 4-pin IEEE 1394a port (🔌₁₃₉₄)
 - USB 2.0 ports (🔌_{USB})
 - Headphone port (🔊)
 - Microphone port (🎤)
11. Power connector
- 12.** Voltage selector switch
- 13.*
 - PS/2 keyboard port (🖱️)
 - PS/2 mouse port (🖱️)
 - VGA port (🖥️)
 - HDMI port (📺)
 - Parallel port (🖨️)
 - USB 2.0 ports (🖱️)
 - LAN (RJ-45) port (📶)
 - Serial (COM1) port (🖨️)
 - DVI-D port (🖥️)
 - Optical S/PDIF Out port (📺)
 - Coaxial S/PDIF Out port (📺)
 - Audio ports configurations:
 - 6-channel (🔊 🔊 🔊 🔊 🔊 🔊)
 - 8-channel (🔊 🔊 🔊 🔊 🔊 🔊 🔊 🔊)
14. Expansion slot metal brackets

NOTE: *The front/rear panel slots/ports and their locations may vary, depending on the model of your system. For detailed descriptions, refer to the system User Guide.

NOTE: **The system's power supply unit has a 115V / 230V voltage selector switch located beside the power connector. Use this switch to select the appropriate system input voltage according to the voltage supply in your area.

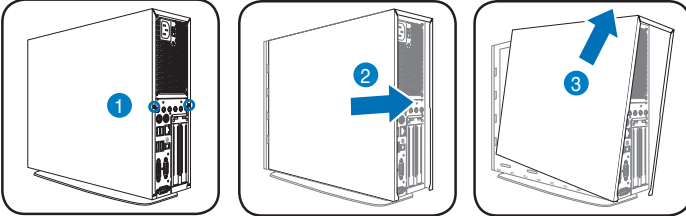
Internal components



NOTE: *Refer to the system User Guide for motherboard details.

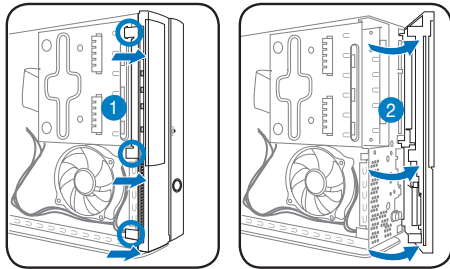
Removing the cover

1. Remove the cover screws on the rear panel. Keep the screws for later use.
2. Pull the cover toward the rear panel.
3. Lift the cover, then set it aside.



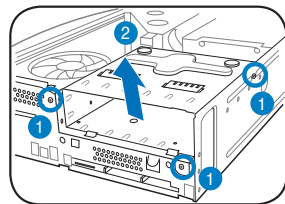
Removing the front panel cover

1. Locate the front panel cover hooks, then lift them until they disengage from the chassis.
2. Swing the front panel cover to the right, remove it, and set it aside.



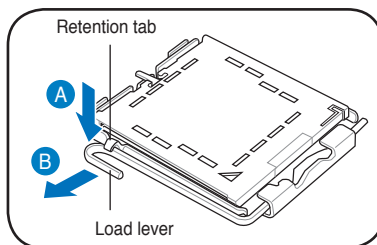
Removing the storage drive assembly

1. Lay the system on its side, then locate and remove three storage drive assembly screws.
2. Lift the storage drive assembly, then set aside.



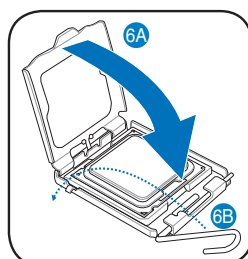
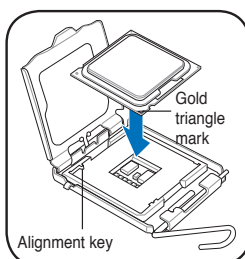
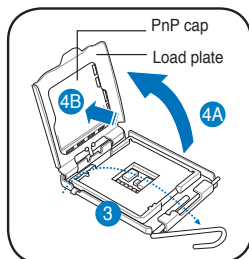
Installing an Intel® CPU

1. Locate the CPU socket on the motherboard.
2. Press the load lever with your thumb (A), then move it to the left (B) until it is released from the retention tab.



CAUTION! To prevent damage to the socket pins, do not remove the PnP cap unless you are installing a CPU.

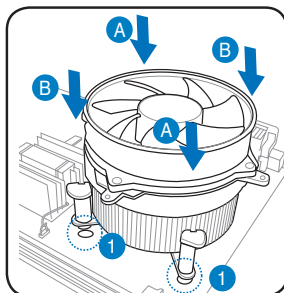
3. Lift the load lever in the direction of the arrow to a 135° angle.
4. Lift the load plate with your thumb and forefinger to a 100° angle (4A), then push the PnP cap from the load plate window to remove (4B).
5. Position the CPU over the socket, making sure that the gold triangle is on the bottom-left corner of the socket. Fit the socket alignment key into the CPU notch.
6. Close the load plate (6A), then push the load lever (6B) until it snaps into the retention tab.



Installing an Intel® CPU heatsink and fan

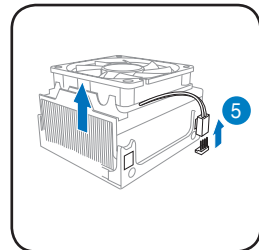
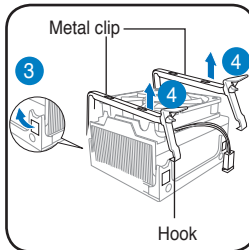
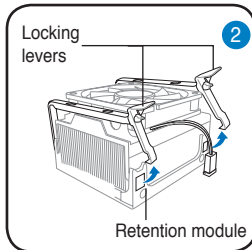
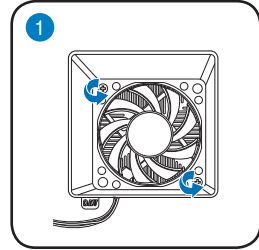
1. Place the heatsink on top of the installed CPU, making sure that the four fasteners match the holes on the motherboard.
2. Push down two fasteners at a time in a diagonal sequence to secure the heatsink and fan assembly in place.
3. When the fan and heatsink assembly is in place, connect the CPU fan cable to the connector on the motherboard.

CAUTION. Do not forget to connect the CPU fan connector! Hardware monitoring error can occur if you fail to plug this connector.



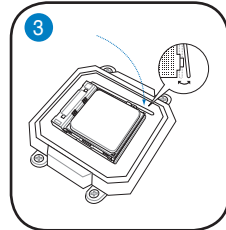
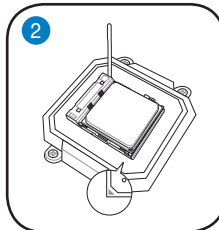
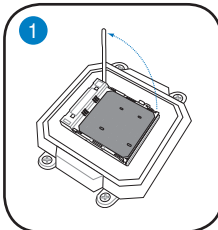
Removing an AMD CPU fan and heatsink assembly

1. Remove two screws securing the blower to the CPU fan.
2. Carefully lift each locking lever and detach its end from the hole of the retention module.
3. Release the hook of each metal clip from the hole of the retention module.
4. Remove the metal clips from the side rail of the fan and heatsink assembly.
5. Disconnect the CPU fan cable from the connector on the motherboard, then remove the fan and heatsink assembly.



Installing an AMD CPU

1. Locate the CPU socket, then lift the socket lever to a 90° angle.
2. Install the CPU to the socket, making sure that the CPU corner with the gold triangle matches the socket corner with a small triangle.
3. Push down the socket lever to secure the CPU.

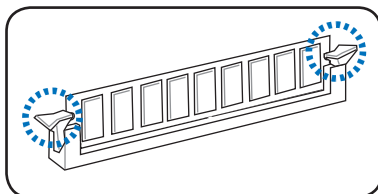
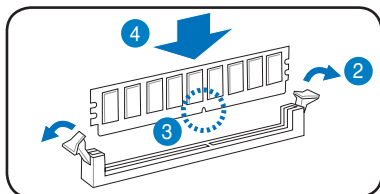


NOTE: To reinstall AMD CPU fan and heatsink assembly, follow the instructions in reverse order.

CAUTION: After you reinstall a fan and heatsink assembly, do not forget to connect the CPU fan connector! Hardware monitoring error can occur if you fail to plug this connector.

Installing a DIMM

1. Locate the DIMM sockets in the motherboard.
2. Unlock a DIMM socket by pressing the retaining clips outward.
3. Align a DIMM on the socket such that the notch on the DIMM matches the break on the socket.
4. Push the DIMM to the socket until the retaining clips snap inward.

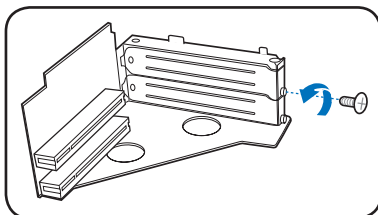
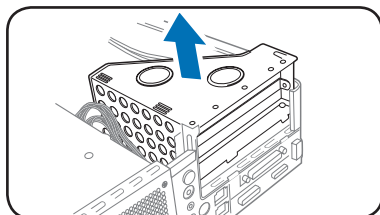


CAUTION:

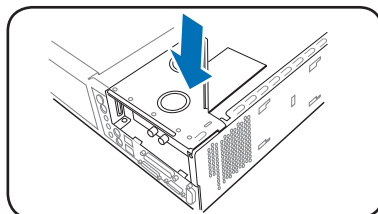
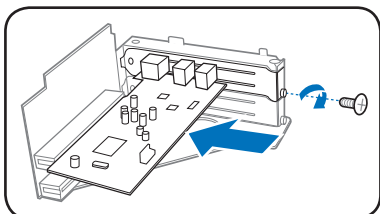
- Unplug the power supply before adding or removing DIMMs. Failure to do so may cause damage to the motherboard and/or components.
- A DDR DIMM is keyed with a notch so that it fits in only one direction. Do not force a DIMM into a socket to avoid damaging the DIMM.

Installing an expansion card

1. Lift the PCI/PCIE riser card assembly to remove.
2. Remove the metal cover opposite the slot that you intend to use.

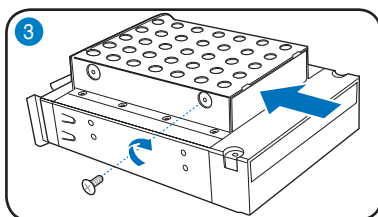
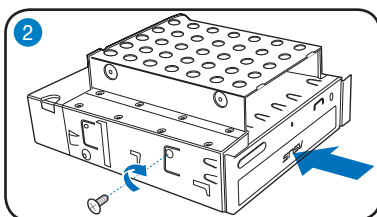


3. Insert the card connector to the slot, then press the card firmly until it fits in place. Secure the card with a screw.
4. Reinstall the PCI/PCIE riser card assembly. Make sure that the riser card connector sits properly on the motherboard PCI/PCIE slot.



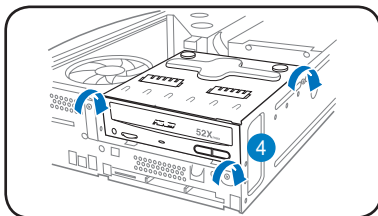
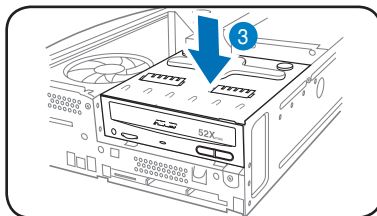
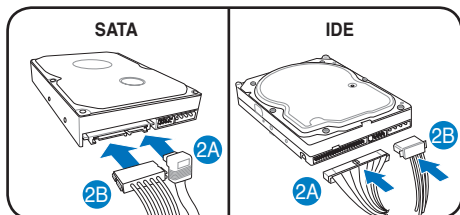
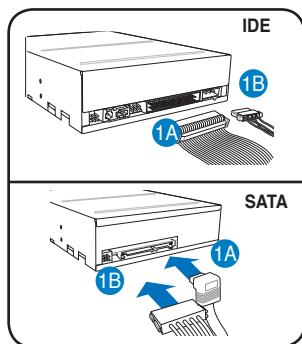
Installing optical and storage drives

1. Turn the storage drive assembly upside down with the 3.5-inch bay on top of the 5.25-inch bay.
2. Insert the optical drive upside down to the 5.25-inch bay, then secure it with two screws on both sides.
3. Turn the storage drive assembly, insert the hard disk drive upside down to the 3.5-inch bay, then secure it with two screws on both sides.



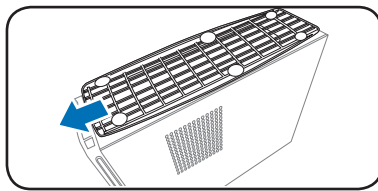
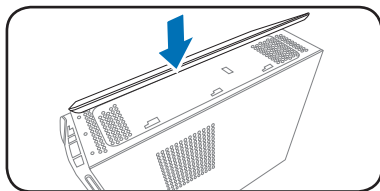
Reinstalling the storage drive assembly

1. Connect the SATA/IDE (1A) and power (1B) plugs to connectors at the back of the optical drive.
2. Connect the SATA/IDE (2A) and power (2B) plugs to the connectors at the back of the SATA/IDE hard disk drives.
3. Install the storage drive assembly to the chassis.
4. Secure the storage drive assembly with three screws.



Installing the foot stand

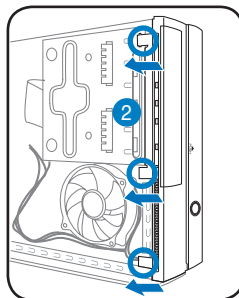
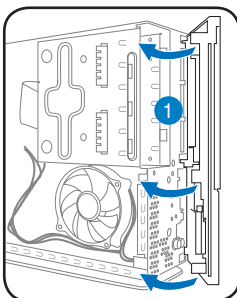
1. Insert the foot stand hooks into the holes on the chassis.
2. Pull the foot stand to the direction of the arrow until the lock snaps in place.



NOTE: To remove the foot stand, lift the lock, then slightly push the foot stand to the direction of the rear panel until it disengages from the chassis.

Reinstalling the front panel cover

1. Insert the front panel cover tabs to the holes on the right side of the chassis, then swing the front panel cover to the left.
2. Insert the front panel cover hooks to the chassis until the front panel cover fits in place.



Reinstalling the cover

1. Insert the cover to the chassis. Make sure the cover tabs fit the chassis rails.
2. Push the cover toward the front panel until it fits in place.
3. Secure the cover with two screws you removed earlier.

NOTE: Refer to the pictures in the section "Removing the cover" on page 3 in reverse order.

NOTE: For P2 model, if your optical drive tray fails to eject when you press the eject button, attach the provided stickers (0.5mm and 1.0mm) to the location shown at the back of the front panel cover. Make sure the sticker aligns with the optical drive eject button.

