

**ASUS<sup>®</sup>**

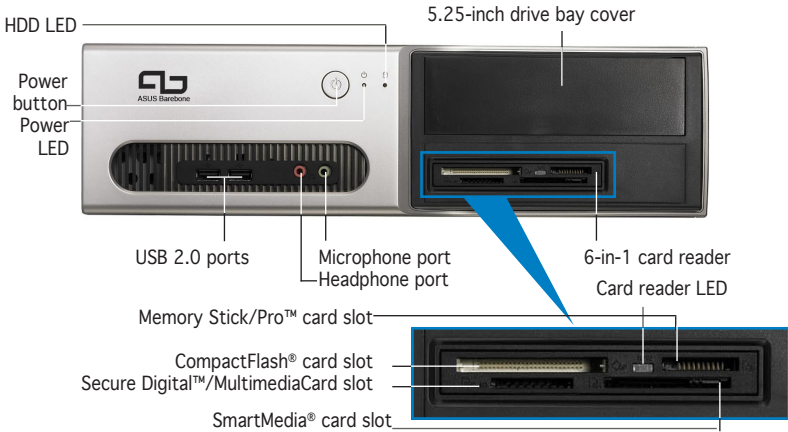
# **Pundit P3-PE5 / P3-AE5** *ASUS PC (Desktop Barebone)*

## **Quick Installation Guide**

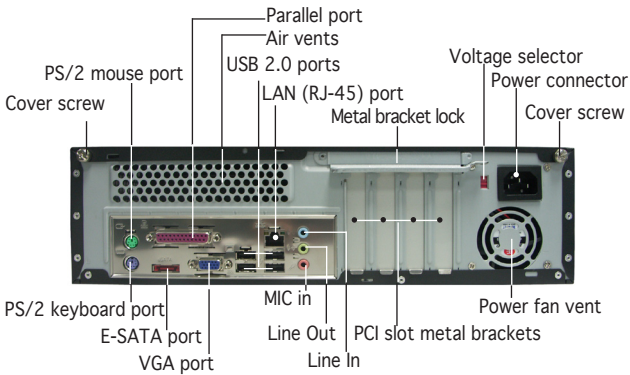


Download the latest manual from the ASUS website: [www.asus.com](http://www.asus.com).

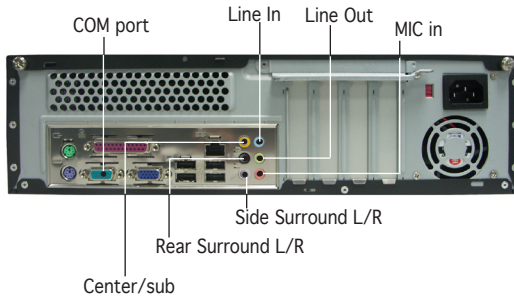
## Front panel features



## Rear panel features (P3-PE5)

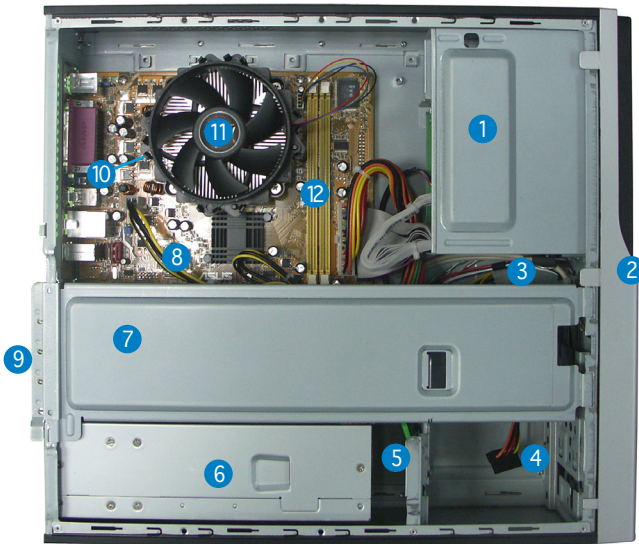


## Rear panel features (P3-AE5)



The systems only support Low Profile PCI card.

# Internal components



1. 5.25-inch empty optical drive bay
2. Front panel cover
3. Optical drive lock
4. Hard disk drive bays
5. Hard disk drive lock
6. Power supply unit
7. Chassis support bracket
8. ASUS motherboard
9. Metal bracket lock
10. LGA775 socket for P3-PE5, AM2 socket for P3-AE5 (under the CPU fan and heatsink assembly)
11. CPU fan and heatsink assembly (P3-AE5 system doesn't bundle with it)
12. DIMM sockets

## Selecting the voltage

The system's power supply unit has a 115 V/230 V voltage selector switch located beside the power connector. Use this switch to select the appropriate system input voltage according to the voltage supply in your area.

If the voltage supply in your area is 100-127 V, set the switch to 115 V.

If the voltage supply in your area is 200-240 V, set the switch to 230 V.

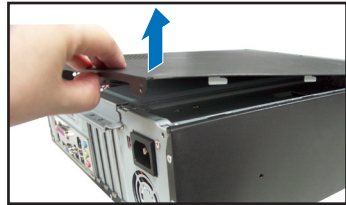
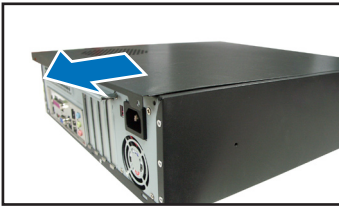


## Removing the cover

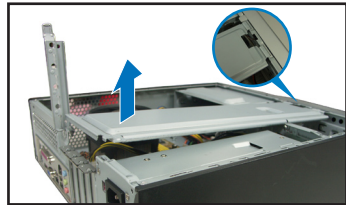
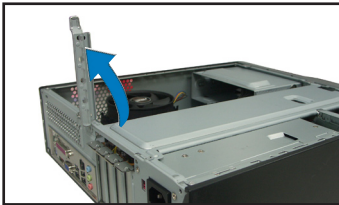
1. Locate two cover screws.
2. Remove the cover screws.



3. Pull the cover.
4. Lift the cover, then set aside.

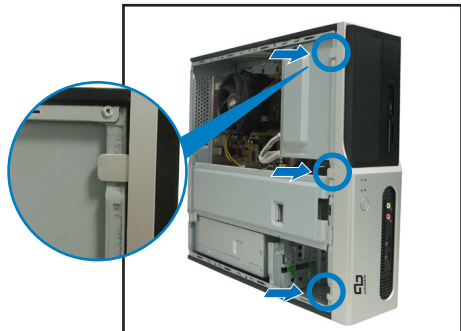


5. Lift the expansion card lock to a 90°-100° angle.
6. Lift the chassis support bracket, then remove.



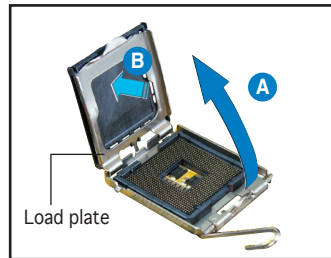
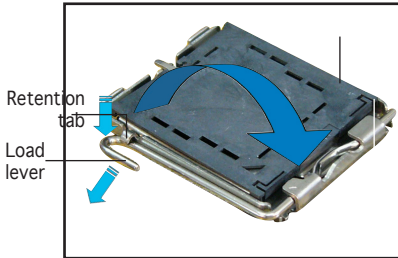
## Removing the front panel assembly

1. Locate the front panel assembly hooks.
2. Pull the hooks outward to remove.

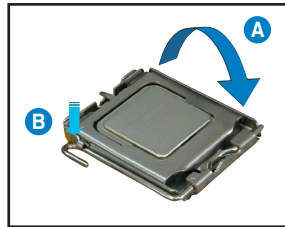
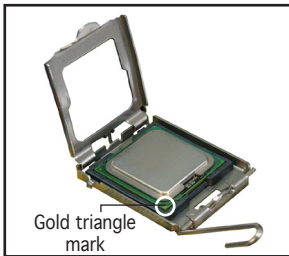


## Installing a CPU (P3-PE5)

1. Locate the CPU socket, then unlock and lift the load lever.
2. Lift the load plate (A), then push the PnP cap from the load plate window (B).

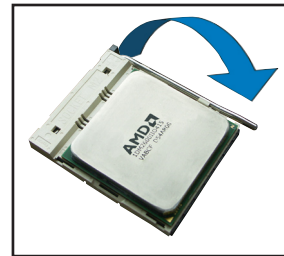
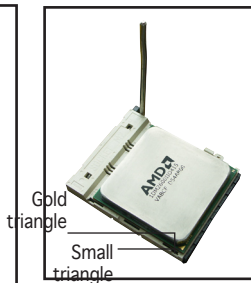
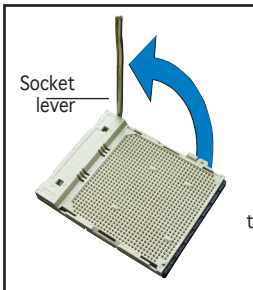


3. Install the CPU.
4. Close the load plate (A), then lock the load lever (B).



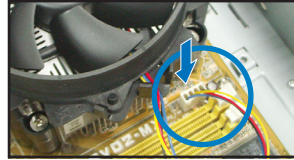
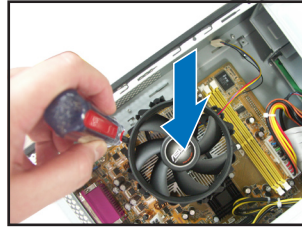
## Installing a CPU (P3-AE5)

1. Locate the CPU socket, then unlock the socket by pressing the lever sideways and lift it up to a 90° angle.
2. Match the gold triangle of the CPU with the socket corner with a small triangle, then carefully insert the CPU into the socket.
3. When the CPU is in place, push down the socket lever to secure the CPU.



# Installing the CPU fan and heatsink assembly (P3-PE5)

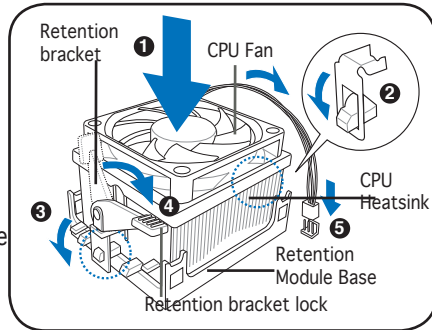
1. Place the heatsink on top of the installed CPU.
2. Drive four screws into the fan holes to secure the fan to the motherboard.
3. Connect the CPU fan cable.



P3-AE5 does not bundle with the CPU fan and heatsink assembly. Please use the AMD CPU box cooler

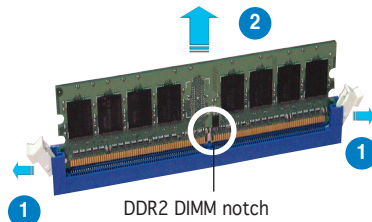
# Installing the CPU fan and heatsink assembly (P3-AE5)

1. Place the heatsink on top of the installed CPU.
2. Attach one end of the retention bracket to the retention module base.
3. Align the other end of the retention bracket (near the retention bracket lock) to the retention module base.
4. Push down the retention bracket lock.
5. Connect the CPU fan cable to the connector on the motherboard labeled CPU\_FAN.



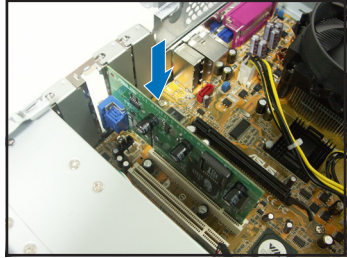
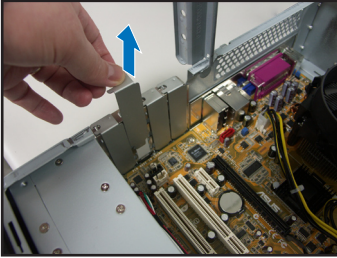
# Installing a DIMM

1. Locate the DIMM sockets in the motherboard.
2. Unlock a DIMM socket by pressing the retaining clips outward.
3. Align a DIMM on the socket such that the notch on the DIMM matches the break on the socket.



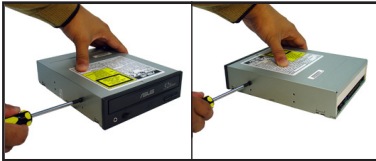
## Installing an expansion card

1. Remove the metal cover opposite the slot that you intend to use.
2. Insert the card connector to the slot, then press the card firmly until it fits in place.

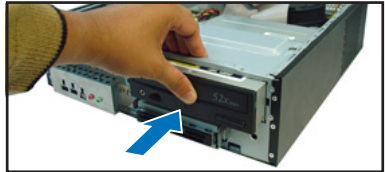


## Installing an optical drive

1. Drive a screw on the top right screw hole on both sides of the drive.
2. Connect the IDE and audio cable at the back of the drive.

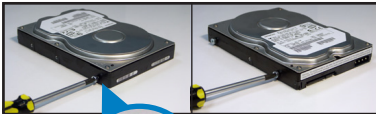


3. Push the drive all the way into the bay until the drive lock clicks.
4. Connect a 4-pin power plug from the power supply unit to the power connector at the back of the drive.



## Installing a SATA hard disk drive

1. Drive two screws with rubber washers on both sides of the drive.
2. Connect the SATA signal and power plug at the back of the drive.



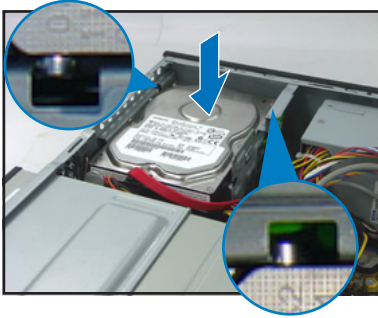
Rubber washer

Power cable and plug

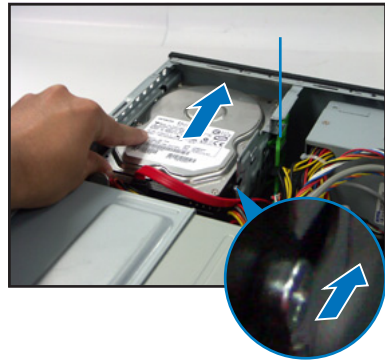
Signal cable and plug



3. Place the HDD on the tray.



4. When the HDD screws align, push the drive on the bay.

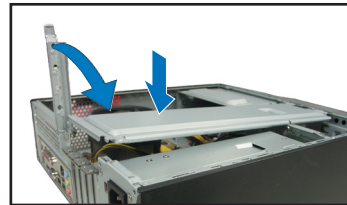


## Replacing the covers

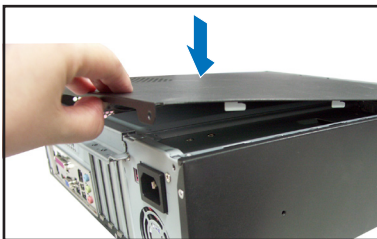
1. Replace the front panel assembly. Remove the 5.25" drive bay cover when you installed an optical drive.



2. Reinstall the metal chassis support and the expansion card lock.



3. Insert the cover hooks to the holes on the chassis side.



4. Push the cover to the direction of the front panel, then replace the cover screws.

