

## Basic installation



---

Refer to the **Hardware Information** user guide for detailed instructions on how to set up your S-presso barebone system.

---

1. Remove the front panel and top cover.
2. Remove the power supply.
3. Install the following items:
  - a. CPU
  - b. Memory module/s
  - c. Expansion card/s
  - d. Optical drive
  - e. Hard disk drive
4. Re-install the power supply unit.
5. Replace the top cover and front panel.
6. Connect external devices to the front and rear panels.
7. Plug the system to a power source.



---

Make sure your system is set to the correct voltage to prevent body injury and damage to the system.

---

## Starting up



---

Refer to the **Software Information** user guide for detailed instructions on how to install the following items to your S-presso barebone system.

---

1. Install Instant On. (Model S1-P111 only)



---

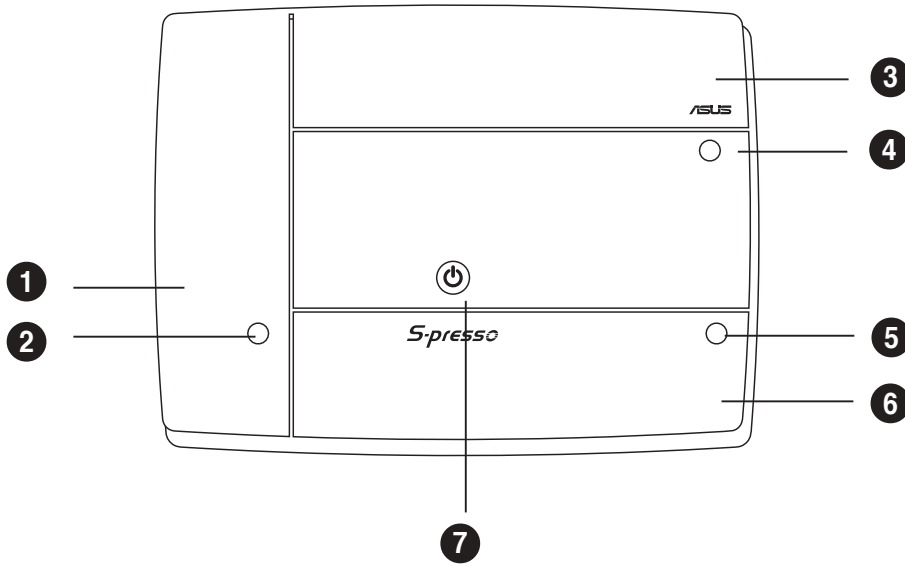
Instant On does NOT support add-on devices such as VGA cards.

---

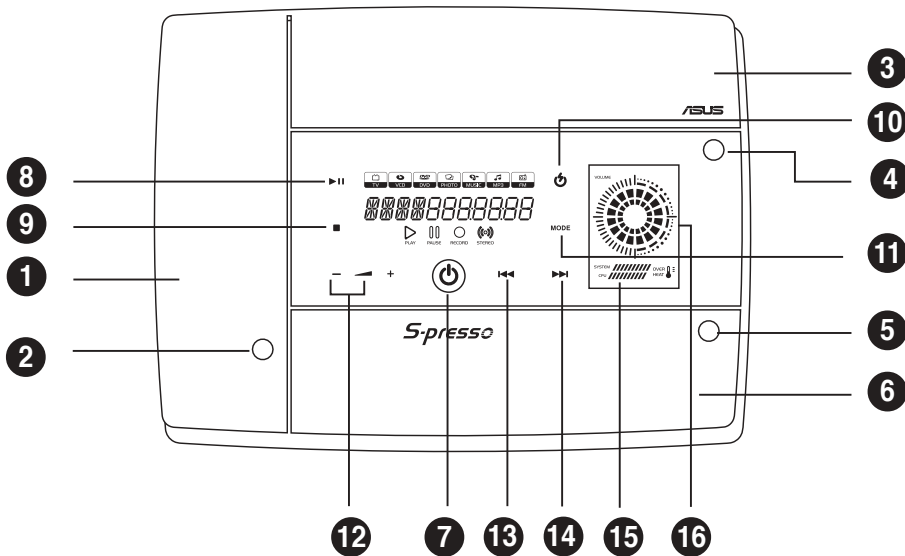
2. Install the operating system.
3. Install drivers and applications.
4. Install Home Theater. (Model S1-P111 only)

# S-presso models

## Model S1-P112



## Model S1-P111

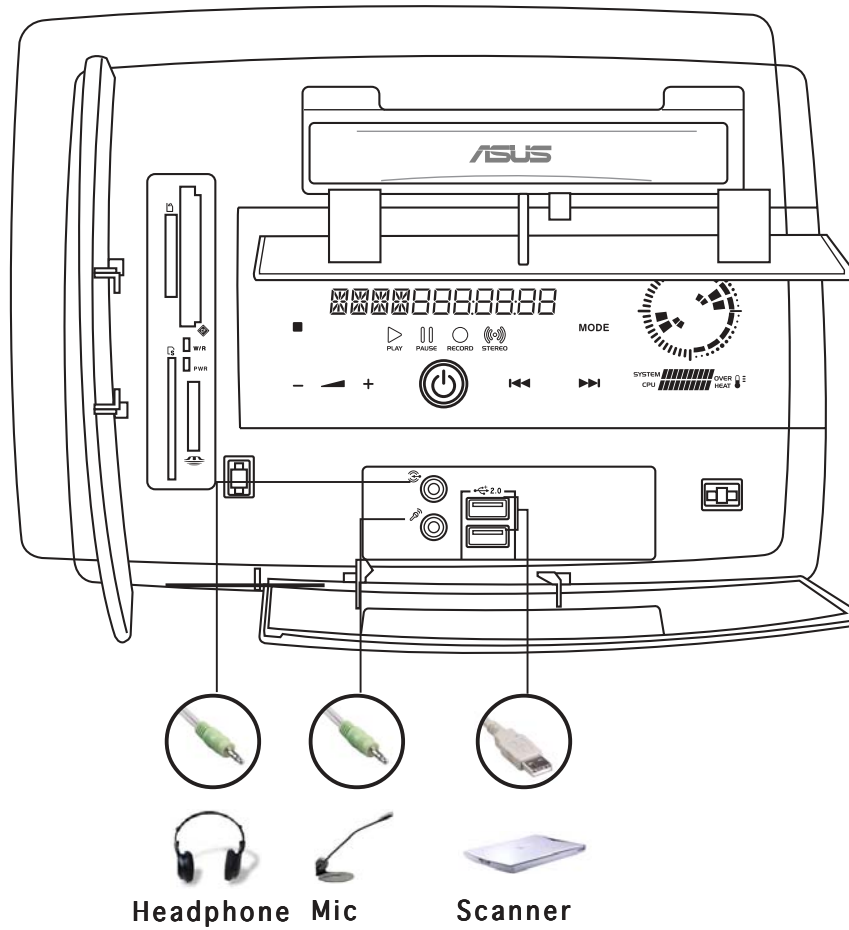


- |                                       |                                  |
|---------------------------------------|----------------------------------|
| 1. Card slots door                    | 9. STOP sensor                   |
| 2. Card slots door access button      | 10. Instant On POWER sensor.     |
| 3. Optical drive door                 | 11. MODE SWITCH sensor           |
| 4. Optical drive tray eject button    | 12. SYSTEM VOLUME CONTROL sensor |
| 5. Front panel I/O door access button | 13. REWIND sensor                |
| 6. Front panel I/O door               | 14. FORWARD sensor               |
| 7. System power button                | 15. System/CPU temperature LED   |
| 8. PLAY/PAUSE sensor                  | 16. Volume LED                   |

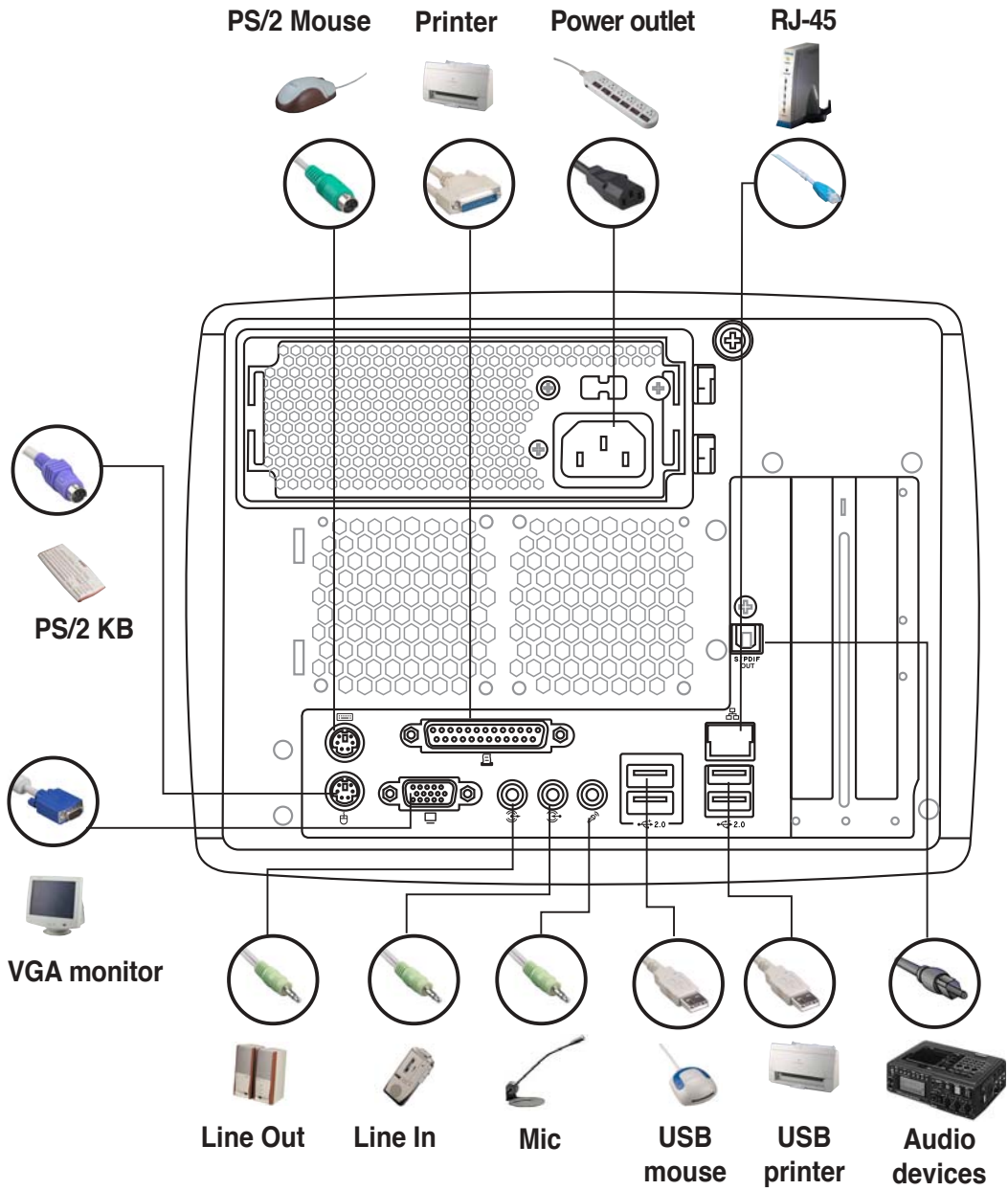
# Connecting external devices

## To the front panel

Model S1-P111



# To the rear panel

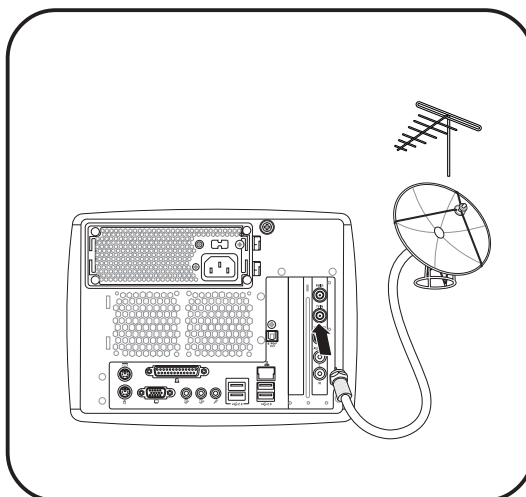


# Connecting cables for the optional ASUS PVR-416 TV/FM card

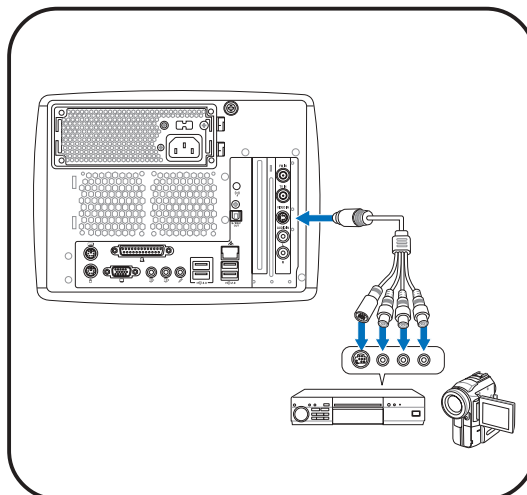


The ASUS PVR-416 TV/FM card is available only in the ASUS TV/FM kit.

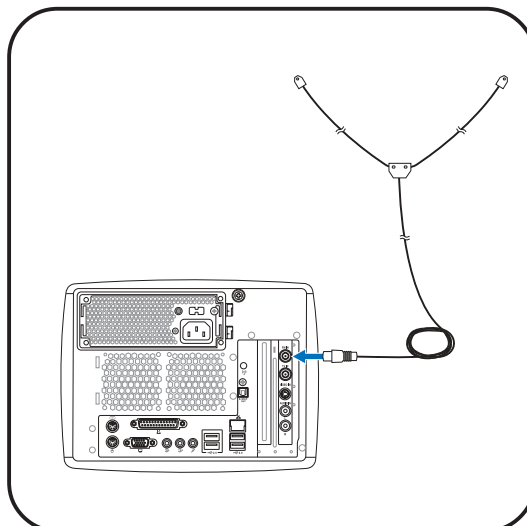
## CableTV (CATV) or indoor/outdoor antenna



## Video In cable



## Radio antenna



## Remote controller layout

The S-presso remote controller allows you to control S-presso from a distance. Use the remote controller to navigate through Instant On and the ASUS Home Theater windows.



SYSTEM BUTTONS	
Button	Function
	Activate Instant On
	Launch Home Theater
	Close Home Theater
	Enter the operating system/Power on PC
	Eject the optical drive tray
	Enter Live TV mode
	Open the Home Theater Guide screen
	Open the DVD Menu screen



TV Mode	
Button	Function
	Enter TV mode
	Volume up/down
	Channel up/down
	Time Shifting
	Live TV
	Mute
	Record TV
	Shuffle between channels
0~9	Select the channel number



DVD/VCD Mode	
Button	Function
	Enter DVD/VCD mode
	Replay the previous chapter
	Stop playing
	Skip the current chapter; proceed to the next chapter
	Rewind
	Pause
	Forward
	Volume up/down
	Play
	Mute
	Repeat/ Play the video again
0~9	Select the chapter number



Photo Mode	
Button	Function
	Enter Photo mode
	Start slideshow
	Pause slideshow
	Stop slideshow
	Previous photo
	Next photo
	Volume up/down
	Mute



Video Mode	
Button	Function
	Enter Video mode
	Replay the previous video clip
	Stop playing
	Proceed to the next video clip
	Rewind
	Pause
	Forward
	Volume up/down
	Play
	Mute
	Repeat/ Play the video again



Music (MP3/CD) Mode	
Button	Function
	Enter Music mode
	Replay the previous track
	Stop playing
	Skip the current track; play the next
	Rewind
	Pause
	Forward
vol.▲	Volume up
vol.▼	Volume down
	Play
	Mute
	Repeat/ Play from the first track
0~9	Select the track number





Radio (FM) Mode	
Button	Function
	Enter Radio mode
	Scan frequency down
	Scan frequency up
	Fine tuning (-)
	Fine tuning (+)
	Volume up/down
	Next/previous preset station
	Mute

