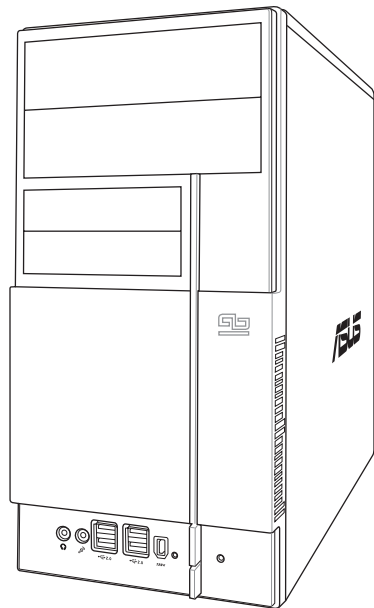


**ASUS**<sup>®</sup>

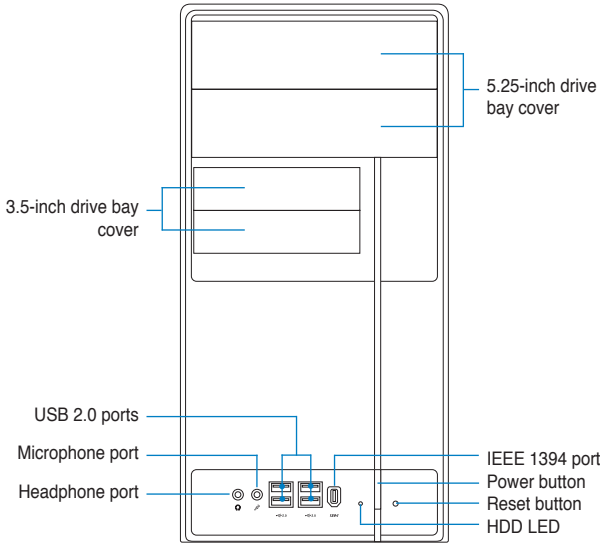
# V-Series P5G965

*ASUS PC (Desktop Barebone)*

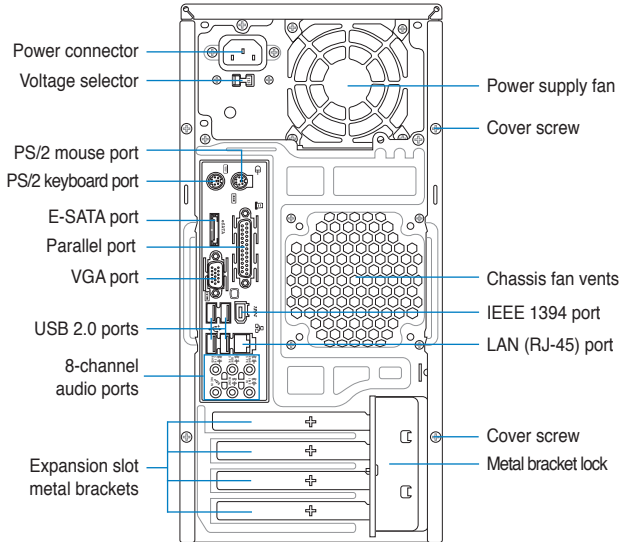
## Installation manual



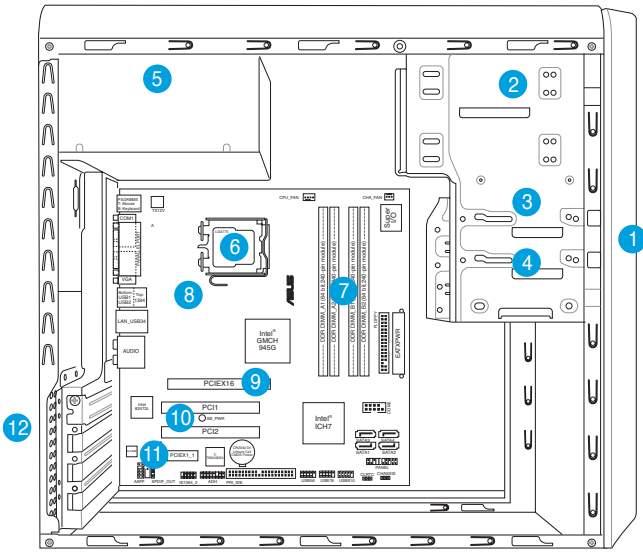
# Front panel features



# Rear panel features



# Internal components



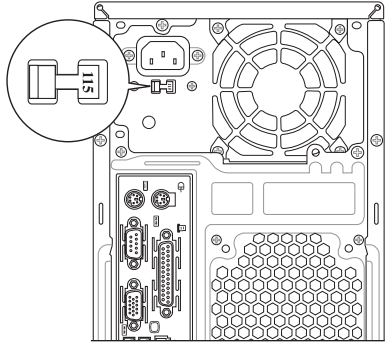
- 1. Front panel cover
- 2. 5.25-inch optical drive bays
- 3. Hard disk drive bay
- 4. Floppy disk drive bay
- 5. Power supply unit
- 6. CPU socket
- 7. DIMM sockets
- 8. ASUS motherboard
- 9. PCI Express x16 slot
- 10. PCI slots
- 11. PCI Express x1 slot
- 12. Metal bracket lock

## Selecting the voltage

The system's power supply unit has a 115 V/230 V voltage selector switch located beside the power connector. Use this switch to select the appropriate system input voltage according to the voltage supply in your area.

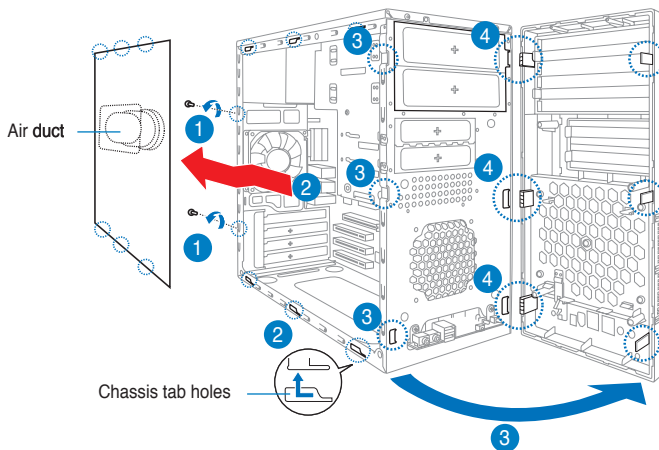
If the voltage supply in your area is 100-127 V, set the switch to 115 V.

If the voltage supply in your area is 200-240 V, set the switch to 230 V.



## Removing the side cover and front panel assembly

1. Remove the cover screws on the rear panel.
2. Pull the side cover toward the rear panel until its hooks disengage from the chassis tab holes. Set the side cover aside.
3. Locate the front panel assembly hooks, then lift them until they disengage from the chassis.
4. Swing the front panel assembly to the right, until the hinge-like tabs on the right side of the assembly are exposed.
5. Remove the front panel assembly, then set aside.



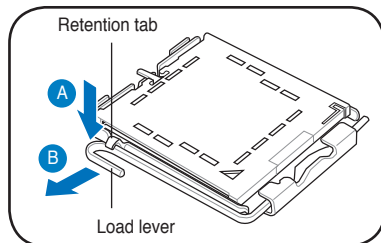
## Installing a CPU

To install a CPU:

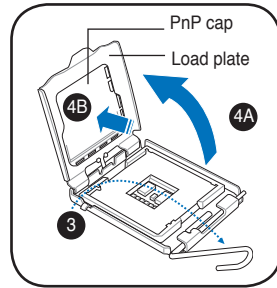
1. Locate the CPU socket on the motherboard.
2. Press the load lever with your thumb (A), then move it to the left (B) until it is released from the retention tab.



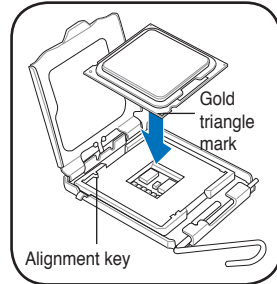
To prevent damage to the socket pins, do not remove the PnP cap unless you are installing a CPU.



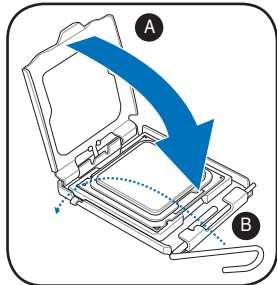
- Lift the load lever in the direction of the arrow to a 135° angle.
- Lift the load plate with your thumb and forefinger to a 100° angle (4A), then push the PnP cap from the load plate window to remove (4B).



- Position the CPU over the socket, making sure that the gold triangle is on the bottom-left corner of the socket. Fit the socket alignment key into the CPU notch.



- Close the load plate (A), then push the load lever (B) until it snaps into the retention tab.

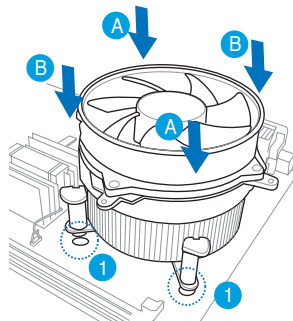


## Installing the CPU fan and heatsink assembly

The Intel® Pentium® 4 LGA775 processor requires a specially designed heatsink and fan assembly to ensure optimum thermal condition and performance.

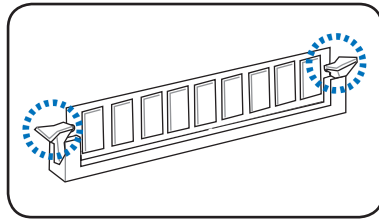
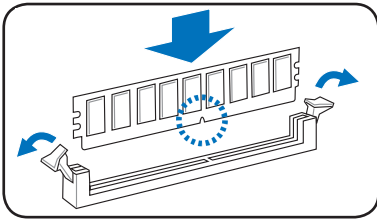
To install the CPU heatsink and fan:

- Place the heatsink on top of the installed CPU, making sure that the four fasteners match the holes on the motherboard.
- Push down two fasteners at a time in a diagonal sequence to secure the heatsink and fan assembly in place.
- When the fan and heatsink assembly is in place, connect the CPU fan cable to the connector on the motherboard.



## Installing a DIMM

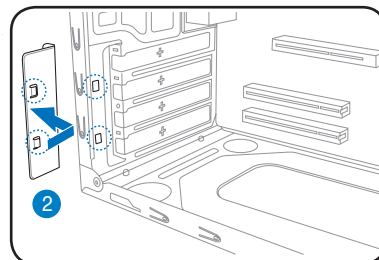
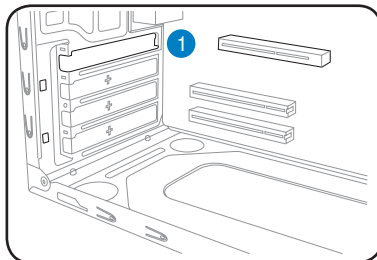
1. Locate the DIMM sockets in the motherboard.
2. Unlock a DIMM socket by pressing the retaining clips outward.
3. Align a DIMM on the socket such that the notch on the DIMM matches the break on the socket.
4. Push the DIMM to the socket until the retaining clips snap inward.



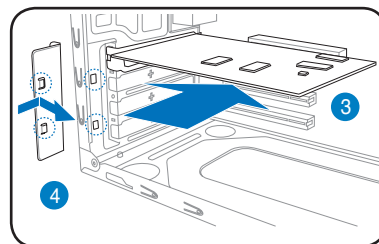
- Unplug the power supply before adding or removing DIMMs. Failure to do so may cause damage to the motherboard and/or components.
- A DDR DIMM is keyed with a notch so that it fits in only one direction. Do not force a DIMM into a socket to avoid damaging the DIMM.

## Installing an expansion card

1. Remove the metal cover opposite the slot that you intend to use.
2. Remove the metal bracket lock.



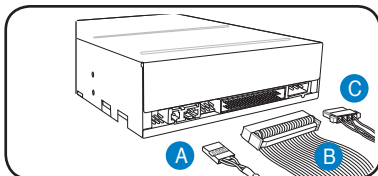
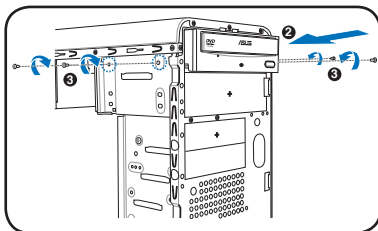
3. Insert the card connector to the slot, then press the card firmly until it fits in place.
4. Replace the metal bracket lock.



# Installing storage drives

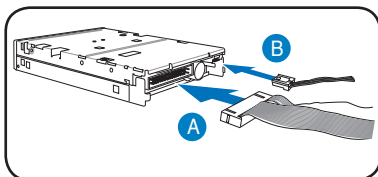
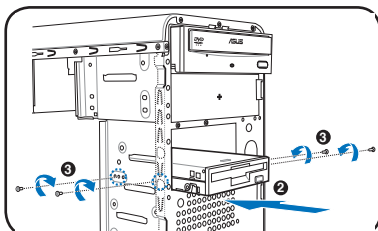
## Optical drive

1. Place the chassis upright, then remove the upper 5.25" drive bay metal plate cover.
2. Insert the optical drive to the bay, then carefully push the drive until its screw holes align with the holes on the bay.
3. Secure the optical drive with two screws on both sides of the bay.
4. Connect the audio (A), IDE (B), and power (C) plugs to connectors at the back of the drive.



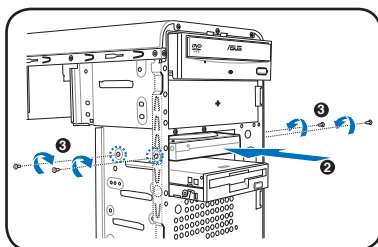
## Floppy disk drive

1. Place the chassis upright, then remove the lower 3.5" drive bay metal plate cover.
2. Insert the floppy disk drive to the bay, then carefully push the drive until its screw holes align with the holes on the bay.
3. Secure the floppy disk drive with two screws on both sides of the bay.
4. Connect the signal (A) and power (B) plugs to connectors at the back of the drive.

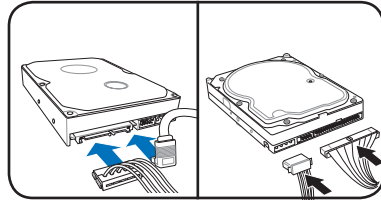


## Hard disk drive

1. Place the chassis upright, then remove the upper 3.5" drive bay metal plate cover.
2. Insert the hard disk drive to the bay, then carefully push the drive until its screw holes align with the holes on the bay.
3. Secure the hard disk drive with two screws on both sides of the bay.



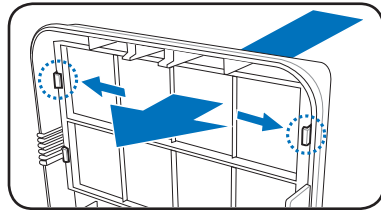
- For SATA HDD: Connect the SATA signal and power plugs to the connectors at the back of the drive.  
For IDE HDD: Connect the IDE and power plugs to the connectors at the back of the drive.



## Removing the bay covers and reinstalling the front panel assembly and side cover

If you installed an optical and/or floppy disk drive, remove the bay cover(s) on the front panel assembly before reinstalling it to the chassis. To do this:

- Locate the bay cover locks.
- Press the locks outward to release the bay cover.
- Push the bay cover inward, then set it aside.
- Follow the same instructions to remove the 3.5" drive bay cover.



To reinstall the front panel assembly and side cover:

- Insert the front panel assembly hinge-like tabs to the holes on the right side of the chassis.
- Swing the front panel assembly to the left, then insert the hooks to the chassis until the front panel assembly fits in place.
- Insert the six side cover hooks into the chassis tab holes .
- Push the side cover to the direction of the front panel until it fits in place.
- Secure the cover with two screws you removed earlier.

