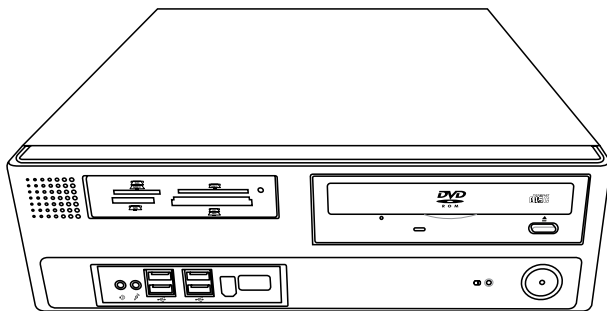


ASUS[®]

BP5120

ASUS Desktop PC



E3680

First Edition

April 2008

Copyright © 2008 ASUSTeK COMPUTER INC. All Rights Reserved.

No part of this manual, including the products and software described in it, may be reproduced, transmitted, transcribed, stored in a retrieval system, or translated into any language in any form or by any means, except documentation kept by the purchaser for backup purposes, without the express written permission of ASUSTeK COMPUTER INC. ("ASUS").

Product warranty or service will not be extended if: (1) the product is repaired, modified or altered, unless such repair, modification or alteration is authorized in writing by ASUS; or (2) the serial number of the product is defaced or missing.

ASUS PROVIDES THIS MANUAL "AS IS" WITHOUT WARRANTY OF ANY KIND, EITHER EXPRESS OR IMPLIED, INCLUDING BUT NOT LIMITED TO THE IMPLIED WARRANTIES OR CONDITIONS OF MERCHANTABILITY OR FITNESS FOR A PARTICULAR PURPOSE. IN NO EVENT SHALL ASUS, ITS DIRECTORS, OFFICERS, EMPLOYEES OR AGENTS BE LIABLE FOR ANY INDIRECT, SPECIAL, INCIDENTAL, OR CONSEQUENTIAL DAMAGES (INCLUDING DAMAGES FOR LOSS OF PROFITS, LOSS OF BUSINESS, LOSS OF USE OR DATA, INTERRUPTION OF BUSINESS AND THE LIKE), EVEN IF ASUS HAS BEEN ADVISED OF THE POSSIBILITY OF SUCH DAMAGES ARISING FROM ANY DEFECT OR ERROR IN THIS MANUAL OR PRODUCT.

SPECIFICATIONS AND INFORMATION CONTAINED IN THIS MANUAL ARE FURNISHED FOR INFORMATIONAL USE ONLY, AND ARE SUBJECT TO CHANGE AT ANY TIME WITHOUT NOTICE, AND SHOULD NOT BE CONSTRUED AS A COMMITMENT BY ASUS. ASUS ASSUMES NO RESPONSIBILITY OR LIABILITY FOR ANY ERRORS OR INACCURACIES THAT MAY APPEAR IN THIS MANUAL, INCLUDING THE PRODUCTS AND SOFTWARE DESCRIBED IN IT.

Products and corporate names appearing in this manual may or may not be registered trademarks or copyrights of their respective companies, and are used only for identification or explanation and to the owners' benefit, without intent to infringe.

ASUS contact information

ASUSTeK COMPUTER INC.

Address	15 Li-Te Road, Peitou, Taipei, Taiwan 11259
Telephone	+886-2-2894-3447
Fax	+886-2-2890-7798
E-mail	info@asus.com.tw
Web site	www.asus.com.tw

Technical Support

Telephone	+86-21-38429911
Online support	support.asus.com

ASUS COMPUTER INTERNATIONAL (America)

Address	44370 Nobel Drive, Fremont, CA 94538, USA
Fax	+1-510-608-4555
Web site	usa.asus.com

Technical Support

Telephone	+1-812-282-2787
Support fax	+1-812-284-0883
Online support	support.asus.com

ASUS COMPUTER GmbH (Germany and Austria)

Address	Harkort Str. 25, D-40880 Ratingen, Germany
Telephone	+49-2102-95990
Fax	+49-2102-959911
Web site	www.asus.de
Online contact	www.asus.de/sales

Technical Support

Telephone	+49-1805-010923
Support Fax	+49-2102-9599-11
Online support	support.asus.com

Contents

Notices.....	vi
Safety information	vii
General precautions	viii
About this guide	ix
System package contents.....	xi

Chapter 1 System introduction

1.1 Front panel.....	1-1
1.2 Rear panel.....	1-2
1.3 Connecting the keyboard and the mouse.....	1-4
1.4 Connecting other peripheral devices.....	1-4
1.5 Internal components.....	1-5

Chapter 2 Basic installation

2.1 Removing the covers.....	2-1
2.1.1 Removing the system cover.....	2-1
2.1.2 Removing the front panel assembly.....	2-2
2.2 Preparation	2-3
2.3 Installing a CPU.....	2-4
2.3.1 CPU installation	2-4
2.3.2 Installing the CPU fan and heatsink assembly.....	2-7
2.4 Installing a DIMM.....	2-8
2.5 Installing an expansion card.....	2-9
2.5.1 Expansion card installation	2-9
2.5.2 Expansion cards	2-11
2.5.3 Standard interrupt assignments	2-12
2.6 Installing a storage device	2-13
2.6.1 Installing / Uninstalling a hard disk drive.....	2-14
2.6.2 Installing / Uninstalling a card reader / a floppy disk drive	2-16
2.6.3 Installing / Uninstalling an optical disk drive.....	2-18
2.7 Replacing the supporting stand and the covers.....	2-20
2.7.1 Replace the supporting stand	2-20
2.7.2 Replace the front panel assembly.....	2-20
2.7.3 Replacing the system cover.....	2-21

Contents

Chapter 3	Getting started	
3.1	Installing an operating system	3-1
3.2	Powering your system.....	3-1
3.3	Support CD information	3-2
3.3.1	Running the support CD	3-2
3.3.2	Drivers menu.....	3-3
3.3.3	Utilities menu	3-4
3.3.4	Manuals menu	3-5
3.3.5	ASUS contact information.....	3-5
3.3.6	Other information	3-6
3.4	Recovery CD.....	3-8

Notices

Federal Communications Commission Statement

This device complies with Part 15 of the FCC Rules. Operation is subject to the following two conditions:

- This device may not cause harmful interference, and
- This device must accept any interference received including interference that may cause undesired operation.

This equipment has been tested and found to comply with the limits for a Class B digital device, pursuant to Part 15 of the FCC Rules. These limits are designed to provide reasonable protection against harmful interference in a residential installation. This equipment generates, uses and can radiate radio frequency energy and, if not installed and used in accordance with manufacturer's instructions, may cause harmful interference to radio communications. However, there is no guarantee that interference will not occur in a particular installation. If this equipment does cause harmful interference to radio or television reception, which can be determined by turning the equipment off and on, the user is encouraged to try to correct the interference by one or more of the following measures:

- Reorient or relocate the receiving antenna.
- Increase the separation between the equipment and receiver.
- Connect the equipment to an outlet on a circuit different from that to which the receiver is connected.
- Consult the dealer or an experienced radio/TV technician for help.



The use of shielded cables for connection of the monitor to the graphics card is required to assure compliance with FCC regulations. Changes or modifications to this unit not expressly approved by the party responsible for compliance could void the user's authority to operate this equipment.

Canadian Department of Communications Statement

This digital apparatus does not exceed the Class B limits for radio noise emissions from digital apparatus set out in the Radio Interference Regulations of the Canadian Department of Communications.

This class B digital apparatus complies with Canadian ICES-003.

Safety information

Electrical safety

- To prevent electrical shock hazard, disconnect the power cable from the electrical outlet before relocating the system.
- When adding or removing devices to or from the system, ensure that the power cables for the devices are unplugged before the signal cables are connected.
- If the power supply is broken, do not try to fix it by yourself. Contact a qualified service technician or your retailer.

Operation safety

- Before installing devices into the system, carefully read all the documentation that came with the package.
- Before using the product, ensure that all cables are correctly connected and the power cables are not damaged. If you detect any damage, contact your dealer immediately.
- To avoid short circuits, keep paper clips, screws, and staples away from connectors, slots, sockets, and circuitry.
- Avoid dust, humidity, and extreme temperatures. Do not place the product in any area where it may become wet. Place the product on a stable surface.
- When using the product, do not block any air inlet/outlet in the chassis.
- The maximum environmental temperature is 35°C.
- If you encounter technical problems with the product, contact a qualified service technician or your retailer.

Lithium-Ion Battery Warning

CAUTION: Danger of explosion if battery is incorrectly replaced. Replace only with the same or equivalent type recommended by the manufacturer. Dispose of used batteries according to the manufacturer's instructions.

VORSICHT: Explosionsgefahr bei unsachgemäßen Austausch der Batterie. Ersatz nur durch denselben oder einem vom Hersteller empfohlenem ähnlichen Typ. Entsorgung gebrauchter Batterien nach Angaben des Herstellers.

LASER PRODUCT WARNING

CLASS 1 LASER PRODUCT

General precautions

Before using the ASUS BP5120 Desktop PC, carefully read the general precautions below. Improper operation could lead to personal injury or damage to the product.

- Before using the product, ensure that all components are correctly installed and all cables are correctly connected. If you detect any damage, contact your dealer immediately.
- Avoid dust and extreme temperatures. Do not place the product in any area where it may receive direct sunlight.
- Keep the product in a dry place. Rain drops, moisture, and liquids may contain minerals and damage the circuitry.
- Leave enough space around the product to provide adequate ventilation. Otherwise, it may overheat.
- Before turning on the system, check if all the peripherals are correctly connected.
- Avoid eating while using the computer. It may contaminate the components and cause the system to malfunction.
- To avoid short circuits, keep scraps, screws, and threads away from connectors, slots, sockets, and circuitry.
- Do not stuff anything into the components. Otherwise, it may cause a short circuit or damage the circuitry.
- If the computer has been used for a long time, avoid direct contact with the heatsinks and the surfaces of IC as they may become very warm and hot. Check if the system receives adequate ventilation.
- Before you add or remove a peripheral device to or from the system, ensure that you unplugged the power cables.
- If the power supply is broken, do not try to fix it by yourself. Contact a qualified service technician or your retailer.
- Though the system casing is elaborately designed to protect users from scratches, be careful with those sharp tips and edges. Put on a pair of gloves before you remove or replace the system cover.
- When you do not need to use your computer for a long time, shut it down and unplug the power cables.
- It is suggested that you use this product when the temperature is no higher than 35°C.
- Warning: Ensure you replace the battery with a correct type otherwise it may cause an explosion hazard.

About this guide

Audience

This guide provides general information and installation instructions about ASUS BP5120 Desktop PC. This guide is intended for experienced users and integrators with hardware knowledge of personal computers.

How this guide is organized

This guide contains the following parts:

1. Chapter 1: System introduction

This chapter gives a general description of ASUS BP5120 Desktop PC. The chapter lists the system features, including introduction on the front and rear panel, and internal components.

2. Chapter 2: Basic installation

This chapter provides step-by-step instructions on how to install components in the system.

3. Chapter 3: Getting started

This chapter helps you power up the system and install drivers and utilities from the support CD.

Conventions used in this guide

To ensure that you perform certain tasks properly, take note of the following symbols used throughout this guide.



WARNING: Information to prevent injury to yourself when trying to complete a task.



CAUTION: Information to prevent damage to the components when trying to complete a task.



IMPORTANT: Instructions that you **MUST** follow to complete a task.



NOTE: Tips and additional information to aid in completing a task.

Where to find more information

Refer to the following sources for additional information and for product and software updates.

1. ASUS Websites

The ASUS websites worldwide provide updated information on ASUS hardware and software products. Refer to the ASUS contact information.

2. Optional Documentation

Your product package may include optional documentation, such as warranty flyers, that may have been added by your dealer. These documents are not part of the standard package.

System package contents

Check your BP5120 system package for the following items.

Standard items	
1.	ASUS BP5120 Desktop PC with
	• ASUS Desktop x 1
	• Mouse x 1
	• Keyboard x 1
2.	Cables
	• AC power cable x 1
	• LAN cable x 1
3.	Accessories
	• Electric strip x 1
	• Mouse pad x 1
4.	Support CD x 1 and Recovery CD x 1
5.	Installation Manual x 1
6.	Warranty card x 1



If any of the items is damaged or missing, contact your retailer immediately.

Optional items	
1.	Optical disk drive (ODD)
2.	Storage card reader / Floppy disk drive

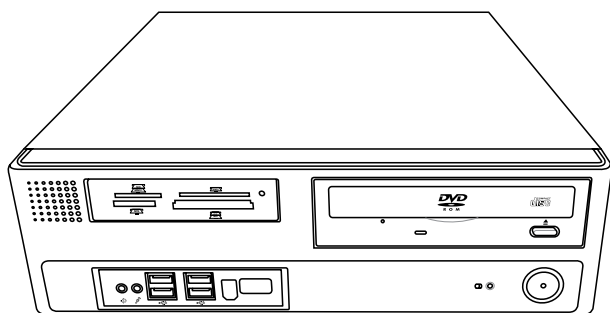


Optional items are not included in the system package. They are purchased separately.

[illegible]

Chapter 1

This chapter gives a general description of the desktop PC. The chapter lists the system features including introduction on the front and rear panel, and internal components.



System introduction

Chapter summary

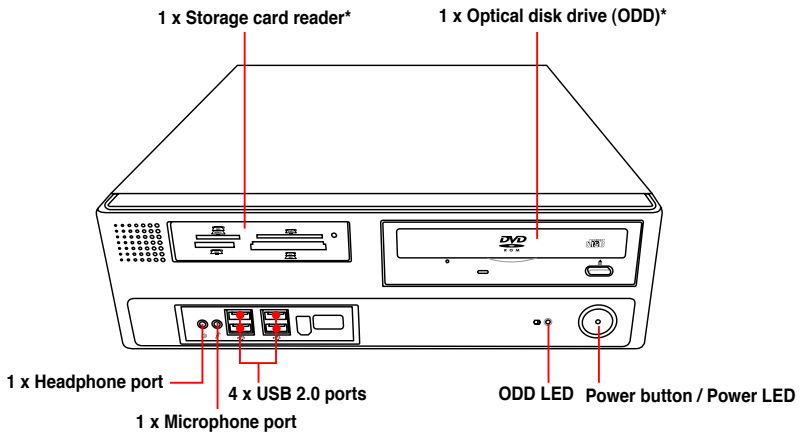
1

1.1	Front panel.....	1-1
1.2	Rear panel.....	1-2
1.3	Connecting the keyboard and the mouse.....	1-4
1.4	Connecting other peripheral devices.....	1-4
1.5	Internal components.....	1-5

1.1 Front panel

The ASUS BP5120 Desktop PC is made up of an ASUS motherboard, a power supply unit, a front panel, and a rear panel, etc. All of these components are integrated in a system casing elaborately designed by ASUS.

The illustration below shows the front panel and the components on it.

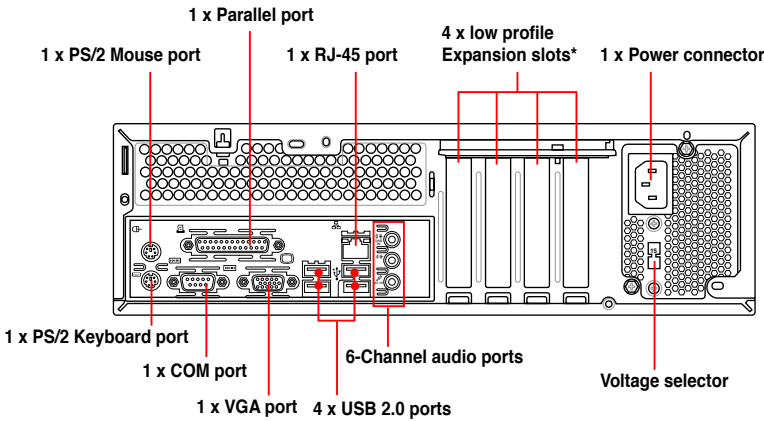


- The storage card reader, optical disk drive, and floppy disk drive are optional items which are not included in the system package. They are purchased separately.
- The information provided is intended as a general guide for reference. Specifications are subject to the Desktop PC you purchased.
- The storage card reader is used for Secure Digital™ / MultimediaCard / Memory Stick® / CompactFlash® / Microdrive™ / SmartMedia® storage cards.

1.2 Rear panel

The system rear panel includes the power connector and several I/O ports that allow convenient connection of devices.

The illustration below shows the rear panel and the components on it.



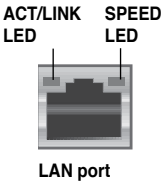
The system only supports low profile PCI, PCI Express x1, and PCI Express x16 slots.

Audio 2, 4, or 6-channel configuration

Port	Headset 2-channel	4-channel	6-channel
Light Blue	Line In	Rear Speaker Out	Rear Speaker Out
Lime	Line Out	Front Speaker Out	Front Speaker Out
Pink	Mic In	Mic In	Bass/Center

LAN port LED indications

Activity/Link Speed LED			
Status	Description	Status	Description
OFF	No link	OFF	10 Mbps connection
ORANGE	Linked	ORANGE	100 Mbps connection
BLINKING	Data activity	GREEN	1 Gbps connection

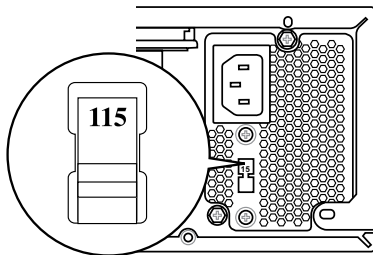


Selecting the voltage

The system's power supply unit has a 115V / 230V voltage selector switch located below the power connector. Use this switch to select the appropriate system input voltage according to the voltage supply in your area.

If the voltage supply in your area is 100-127V, set the switch to 115V.

If the voltage supply in your area is 200-240V, set the switch to 230V.



Setting the switch to 115V in a 230V environment will seriously damage the system!

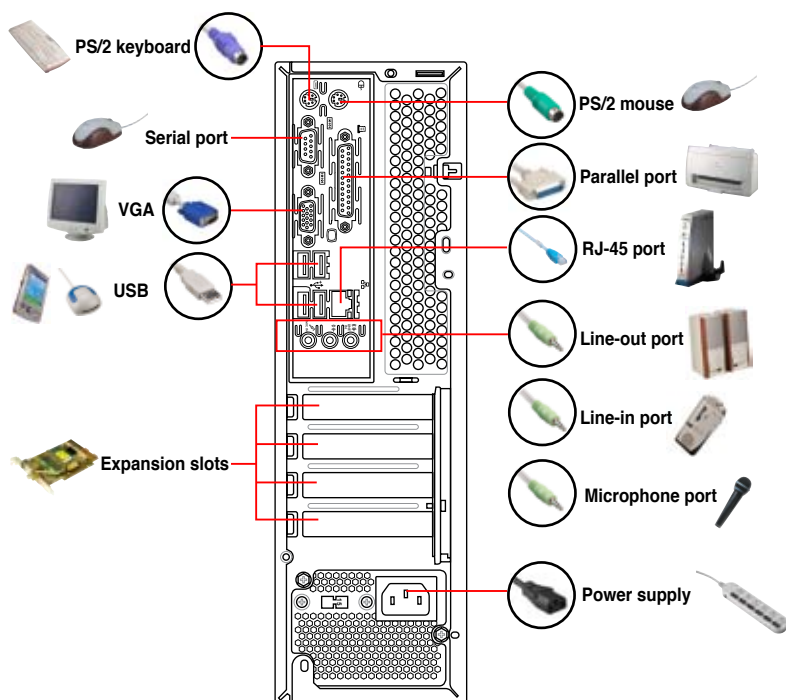
1.3 Connecting the keyboard and the mouse

The ASUS BP5120 Desktop PC is equipped with a PS/2 keyboard and a USB mouse. Connect the PS/2 keyboard to the PS/2 keyboard port at the rear panel and the USB mouse to a USB port at the rear panel or front panel as you like.

1.4 Connecting other peripheral devices

The ASUS BP5120 Desktop PC is equipped with a number of ports at the rear and the front panels where you can connect peripheral devices to the system.

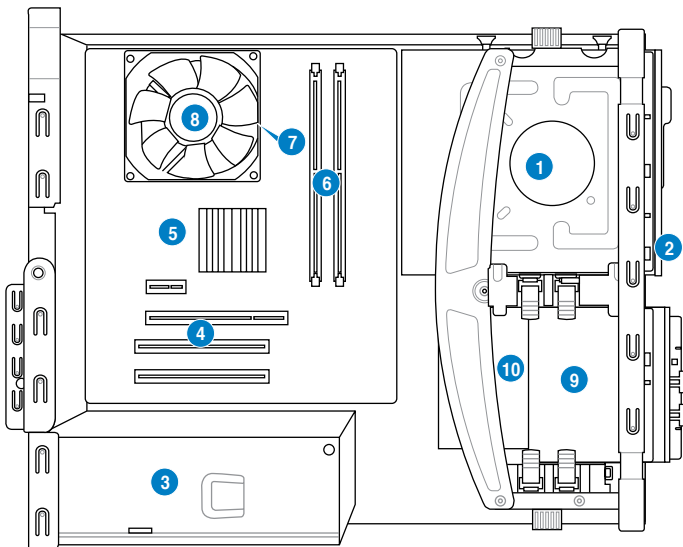
Refer to the illustration below for details.



- The system only supports low profile PCI, PCI Express x16, and PCI Express x1 cards. You can only install low profile expansion cards on this system.
- Before you connect a peripheral device to the system, refer to the documentation that comes with the device or contact your supplier directly for information on how to install it.

1.5 Internal components

The illustration below is the internal view of the system when you remove the top cover and the chassis support bracket. The installed components are labeled for your reference. Proceed to Chapter 2 for instructions on installing additional system components.



- | | |
|--------------------------------------|--|
| 1. 5.25-inch empty optical drive bay | 7. LGA775 socket (under the CPU fan) |
| 2. Front panel cover (Removed) | 8. CPU fan and heatsink assembly |
| 3. Power supply unit | 9. Storage card reader / Floppy disk drive |
| 4. Expansion slots | 10. 3.5-inch empty optical drive bay |
| 5. ASUS motherboard | |
| 6. DIMM slots | |

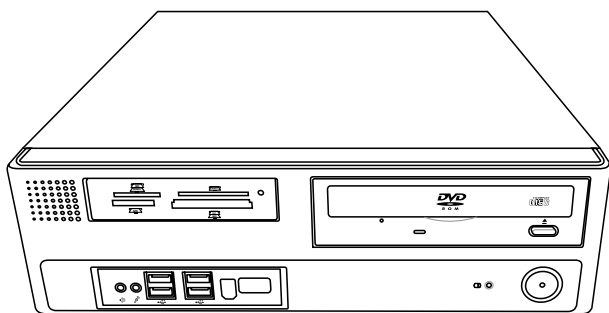


- The optical disk drive, floppy disk drive, and storage card reader are optional items which are not included in the system package. They are purchased separately.
- The 5.25-inch empty optical drive bay is for a DVD-ROM / CD-RW / DVD-RW device.
- The 3.5-inch empty optical drive bay is for a 3.5-inch hard disk drive / floppy disk drive / USB storage card reader.

This image shows a single sheet of white paper with horizontal ruling lines. The lines are evenly spaced and run across the width of the page. There are no margins, text, or other markings on the paper.

Chapter 2

This chapter provides step-by-step instructions on how to install components in the system.



Basic installation

Chapter summary

2

2.1	Removing the covers.....	2-1
2.2	Preparation	2-3
2.3	Installing a CPU.....	2-4
2.4	Installing a DIMM.....	2-8
2.5	Installing an expansion card.....	2-9
2.6	Installing a storage device	2-13
2.7	Replacing the supporting stand and the covers.....	2-20

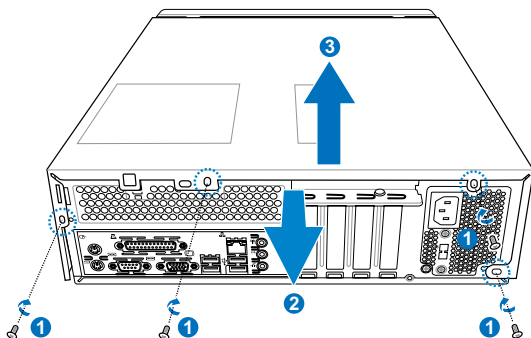
2.1 Removing the covers

2.1.1 Removing the system cover

The system panel is secured with four screws on the rear panel. Before you remove it, place the system horizontally.

To remove the system panel:

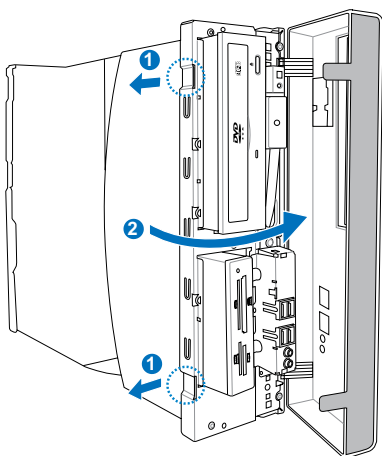
1. On the rear panel, locate the four screws that secure the cover to the chassis. Use a Philips screw driver to remove the screws and keep them for later use.
2. Slightly push the cover toward the rear panel until the side tabs are disengaged from the chassis.
3. Lift the cover, then set aside.



2.1.2 Removing the front panel assembly

To remove the front panel assembly:

1. Place the system vertically. Locate the front panel assembly hooks and pull the hooks outward to release the front panel assembly.
2. Swing the left edge of the front panel assembly outward and unhook the hinge-like tabs from the holes on the right side of the chassis to detach.



Do not use too much force when removing the front panel assembly.

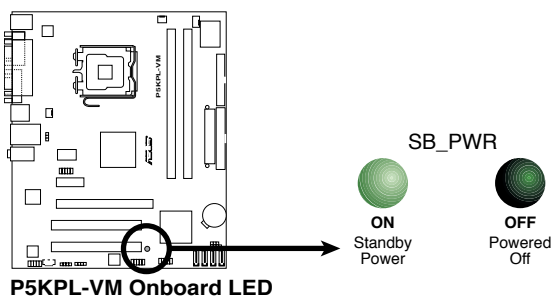
2.2 Preparation

Take note of the following precautions before you install components into the system.



- Unplug the power cables before you touch any component in the system.
- Use a grounded wrist strap or touch a safely grounded object or a metal object, such as the power supply case, before handling components to avoid damaging them due to static electricity.
- Hold components by the edges to avoid touching the ICs on them.
- Whenever you uninstall any component, place it on a grounded antistatic pad or in the bag that came with the component.
- Before you install or remove any component, ensure that the ATX power supply is switched off or the power cable is detached from the power supply. Failure to do so may cause severe damage to the motherboard, peripherals, and components.

The system motherboard comes with an onboard standby power LED. This LED lights up to indicate that the system is ON, in sleep mode or in soft-off mode, and not powered OFF. Unplug the power cable from the power outlet and ensure that the standby power LED is OFF before installing any system component.



2.3 Installing a CPU

The motherboard comes with a surface mount LGA775 socket designed for the Intel® Core™2 Duo / Pentium® D/ Pentium® 4 / Celeron® D processors.



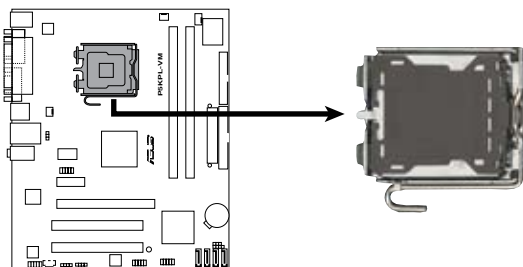
- Your boxed Intel® LGA775 processor package should come with installation instructions for the CPU, heatsink, and retention mechanism. If the instructions in this section do not match the CPU documentation, follow the latter.
- Check your motherboard to ensure that the PnP cap is on the socket and the socket contacts are not bent. Contact your retailer immediately if the PnP cap is missing, or if you see any damage to the socket contacts/ motherboard components. ASUS will shoulder the cost of repair only if the damage is shipment/transit-related.
- The product warranty does not cover damage to the socket contacts resulting from incorrect CPU installation or removal.

2.3.1 CPU installation

Installing the CPU

To install a CPU:

1. Locate the CPU socket on the motherboard.



P5KPL-VM CPU Socket 775

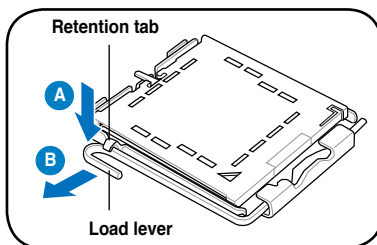


Before installing the CPU, ensure that the socket box is facing towards you and the load lever is on your left.

2. Press the load lever with your thumb (A), then move it to the left (B) until it is released from the retention tab.

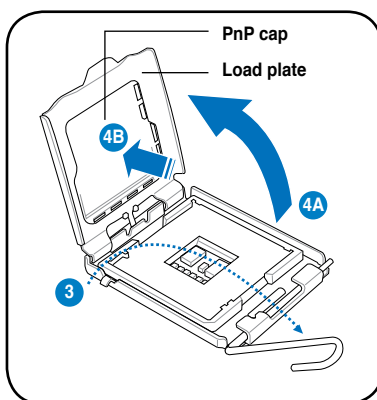


To prevent damage to the socket pins, do not remove the PnP cap unless you are installing a CPU.

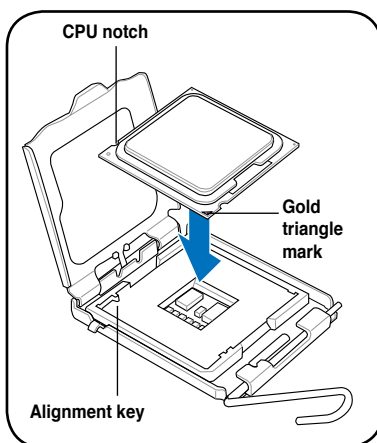


3. Lift the load lever in the direction of the arrow to a 135° angle.

4. Lift the load plate with your thumb and forefinger to a 100° angle (4A), then push the PnP cap from the load plate window to remove (4B).



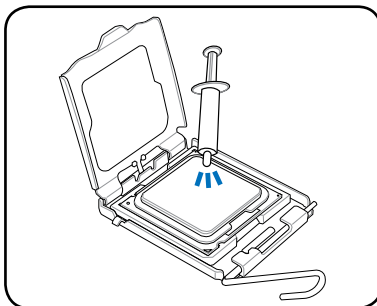
5. Position the CPU over the socket, ensuring that the gold triangle is on the bottom-left corner of the socket then fit the socket alignment key into the CPU notch.



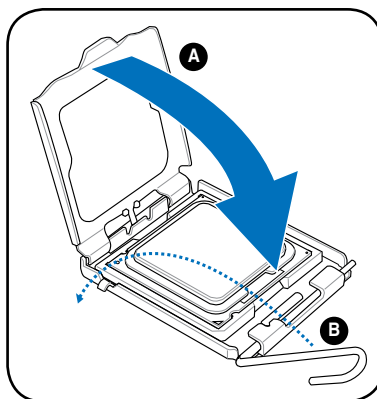
6. Apply Thermal Interface Material on the CPU before closing the load plate.



DO NOT eat the Thermal Interface Material. If it gets into your eyes or touches your skin, ensure that you wash it off immediately, and seek professional medical help.



7. Close the load plate (A), then push the load lever (B) until it snaps into the retention tab.



Intel® Hyper-Threading Technology



- The motherboard supports Intel® Pentium® 4 / Core™2 Duo LGA775 processors with Hyper-Threading Technology.
- Hyper-Threading Technology is supported under Windows® XP / Vista and Linux 2.4.x (kernel) and later versions only. Under Linux, use the Hyper-Threading compiler to compile the code. If you are using any other operation systems, disable the Hyper-Threading Technology in the BIOS to ensure system stability and performance.
- Installing Windows® XP Service Pack 1 or later version is recommended.
- Ensure that you enable the Hyper-Threading Technology item in the BIOS before installing a supported operating system.
- For more information on Hyper-Threading Technology, visit www.intel.com/info/hyperthreading.

2.3.2 Installing the CPU fan and heatsink assembly

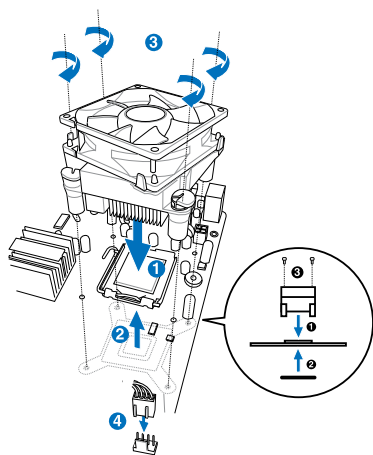
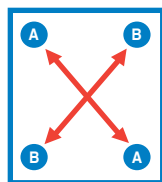
The Intel® LGA775 processor requires a specially designed heatsink and fan assembly to ensure optimum thermal condition and performance.



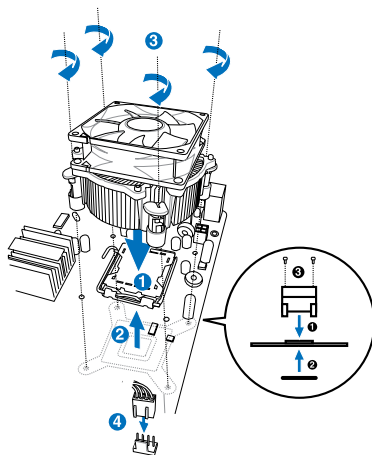
Ensure that the Thermal Interface Material is properly applied to the CPU heatsink or CPU before you install the heatsink and fan assembly.

To install the CPU heatsink and fan:

1. Place the heatsink on top of the installed CPU, ensuring that the four fasteners match the holes on the motherboard.
2. Push down two fasteners at a time in a diagonal sequence to secure the heatsink and fan assembly in place.



Installing the CPU fan and heatsink assembly 1

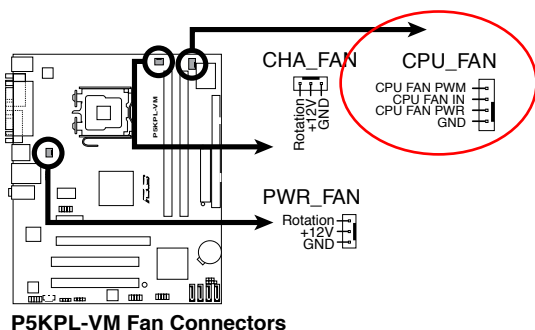


Installing the CPU fan and heatsink assembly 2



Both kinds of fan and heatsink assemblies above apply to this motherboard.

- When the fan and heatsink assembly is in place, connect the CPU fan cable to the connector on the motherboard.

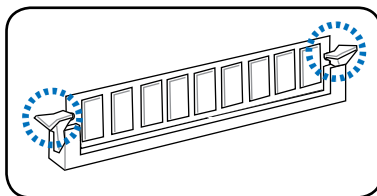
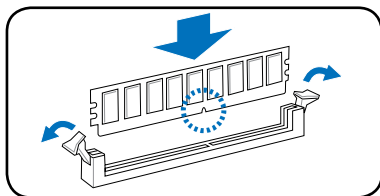


Do not forget to connect the CPU fan connector! Hardware monitoring errors can occur if you fail to plug this connector.

2.4 Installing a DIMM

To install a DDR2 DIMM:

- Locate the two DIMM slots on the motherboard.
- Unlock a slot by pressing the retaining clips outward.
- Align a DIMM on the slot such that the notch on the DIMM matches the break on the slot.
- Firmly insert the DIMM into the slot until the retaining clips snap back in place and the DIMM is properly seated.



- Unplug the power cables before installing a DIMM or any other component. Failure to do so may cause damage to the motherboard and the components on it.
- A DDR2 DIMM is keyed with a notch so that it fits in only one direction. DO NOT force a DIMM into a slot to avoid damaging the DIMM!

2.5 Installing an expansion card

In the future, you may need to install expansion cards. The motherboard has two PCI slots, one PCI Express™ x1 slot, and one PCI Express™ x16 slot. The following subsections describe the slots and the expansion cards that they support.



The system only supports low profile PCI, PCI Express x16, and PCI Express x1 cards. You can only install low profile expansion cards on this system.

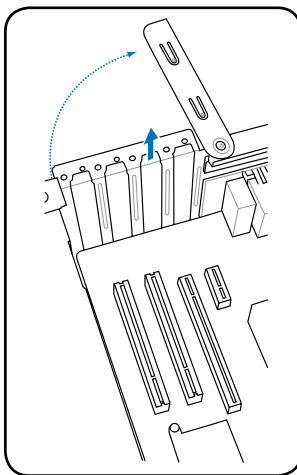
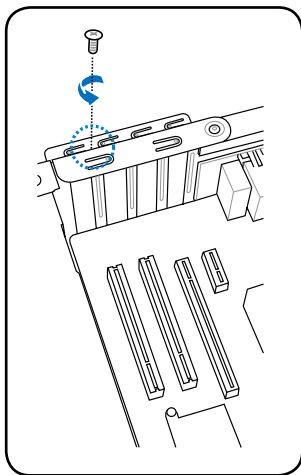
2.5.1 Expansion card installation



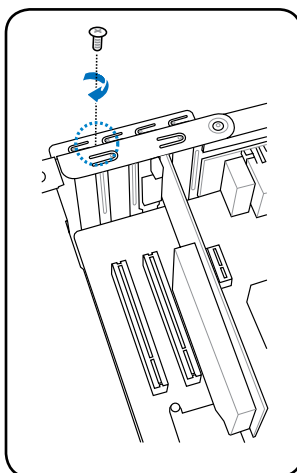
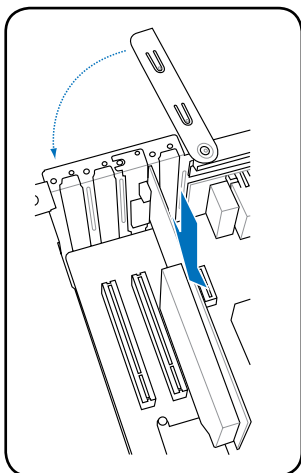
Ensure that you unplug the power cord before adding or removing expansion cards. Failure to do so may cause you physical injury and damage the motherboard.

To install an expansion card:

1. Remove one metal bracket lock screw with a Philips screw driver.
2. Remove the metal bracket lock and the metal cover opposite the slot that you intend to use.



3. Align the card connector with the slot and press firmly until the card is completely seated on the slot. Replace the metal bracket lock.
4. Replace the metal bracket lock screw to secure the card.

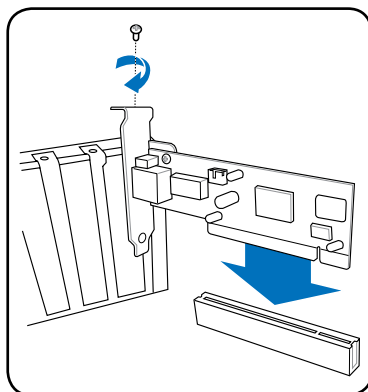


This system only supports low profile PCI, PCI Express x1, and PCI Express x16 cards. You can only install low profile expansion cards on this system.

2.5.2 Expansion cards

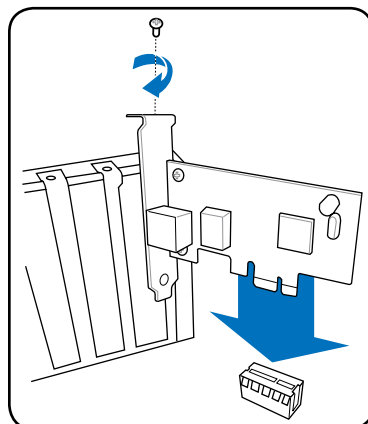
PCI slots

The PCI slots support cards such as LAN card, SCSI card, audio card, USB card and other cards that comply with PCI specifications. The figure shows a LAN card installed on a PCI slot.



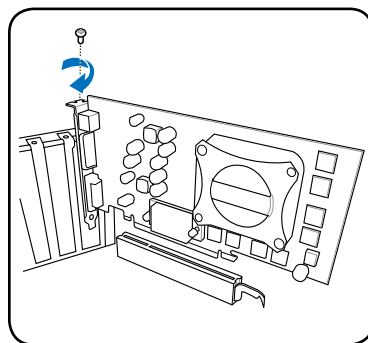
PCI Express x1 slot

This motherboard supports PCI Express x1 network cards, SCSI cards and other cards that comply with PCI Express specifications. The figure shows a network card installed on a PCI Express x1 slot.



PCI Express x16 slot

This motherboard supports PCI Express x16 graphics cards that comply with PCI Express specifications. The figure shows a graphics card installed on a PCI Express x16 slot.



The system only supports low profile PCI, PCI Express x16, and PCI Express x1 cards. You can only install low profile expansion cards on this system.

2.5.3 Standard interrupt assignments

Standard interrupt assignments

IRQ	Priority	Standard Function
0	1	System Timer
1	2	Keyboard Controller
2	—	Redirect to IRQ#9
3	10	Communications Port (COM1)
4	11	IRQ holder for PCI steering*
5	12	Standard Floppy Disk Controller
6	13	Printer Port (LPT1)*
7	3	System CMOS/Real Time Clock
8	4	IRQ holder for PCI steering*
9	5	IRQ holder for PCI steering*
10	6	IRQ holder for PCI steering*
11	7	PS/2 Compatible Mouse Port*
12	8	Numeric Data Processor
13	9	Primary IDE Channel

* These IRQs are usually available for ISA or PCI devices.

IRQ assignments for this motherboard

	A	B	C	D	E	F	G	H
PCI1	—	—	—	shared	—	—	—	—
PCI2	shared	—	—	—	—	—	—	—
PCIEX16_1	shared	—	—	—	—	—	—	—
PCIEX1_1	shared	—	—	—	—	—	—	—
Onboard USB controller 1	—	—	—	—	—	—	—	shared
Onboard USB controller 2	—	—	—	shared	—	—	—	—
Onboard USB controller 3	—	—	shared	—	—	—	—	—
Onboard USB controller 4	shared	—	—	—	—	—	—	—
Onboard USB 2.0 controller	—	—	—	—	—	—	—	shared
Onboard HD audio	shared	—	—	—	—	—	—	—
Onboard LAN	—	shared	—	—	—	—	—	—



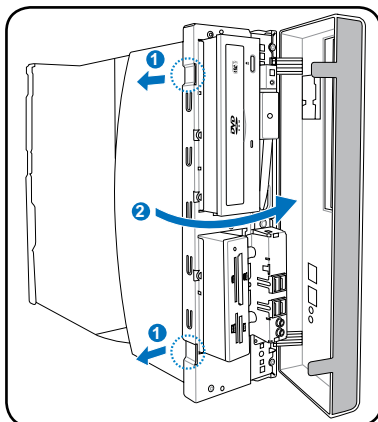
When using a PCI card on shared slots, ensure that the drivers support “Share IRQ” or that the cards do not need IRQ assignments. Otherwise, conflicts will arise between the two PCI groups, making the system unstable and the card inoperable.

2.6 Installing a storage device

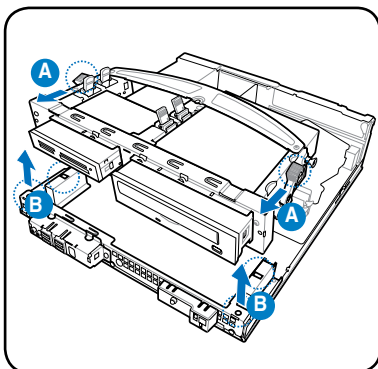
Before you install a storage device to the system, remove the system cover and front panel assembly first.

To remove the front panel assembly:

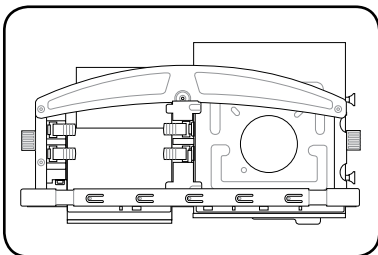
1. Place the system vertically. Locate the front panel assembly hooks and pull the hooks outward to release the front panel assembly.
2. Swing the left edge of the front panel assembly outward and unhook the hinge-like tabs from the holes on the right side of the chassis to detach.



3. Place the system horizontally. Push the retention bracket locks (A) on both sides toward the front panel and disengage the supporting stand from the tenons (B).



4. Remove the supporting stand and lay it on a flat and stable surface.

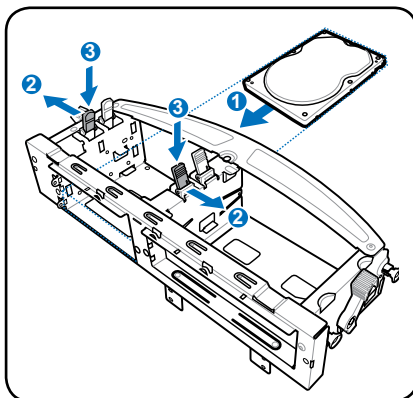


2.6.1 Installing / Uninstalling a hard disk drive

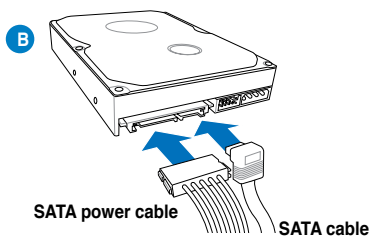
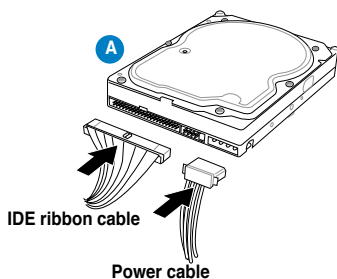
Installing a hard disk drive

To install a hard disk drive:

1. Insert the hard disk to the 3.5 inch drive bay and carefully push the disk until its screw holes are aligned with the holes on the supporting stand.
2. Pull the retention brackets on both sides of the bay outward and align the hard disk to the retention brackets.
3. Press the retention bracket locks until they are parallel to the hard disk.
4. Connect the power cable and the signal cable.



- You can install an IDE hard disk drive with an IDE power cable and an IDE cable (A) into the drive bay.
- You can install a Serial ATA hard disk drive with a Serial ATA power cable and a Serial ATA cable (B) into the drive bay.

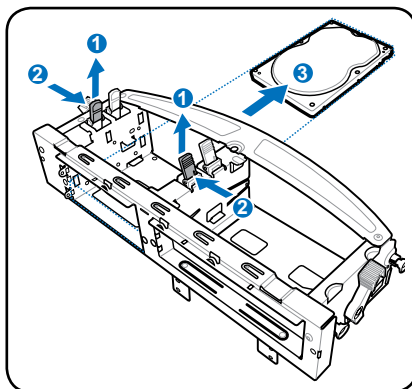


Do not place the IDE ribbon cable too close to the power fan in case it interferes with the system ventilation.

Uninstalling a hard disk drive

To uninstall a hard disk drive:

1. Pull the retention bracket locks upward until they are vertical to the hard disk.
2. Push the retention brackets inward to disengage the hard disk.
3. Remove the hard disk from the back of the supporting stand.



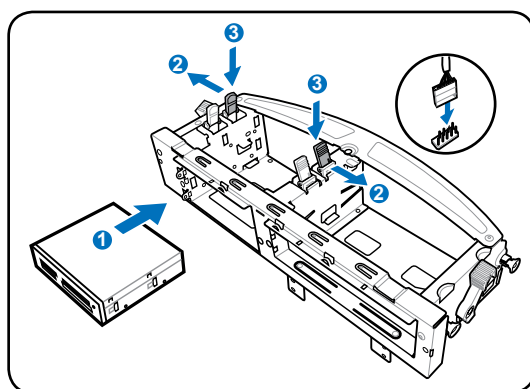
Before you uninstalll a hard disk drive, be certain to unplug the cables.

2.6.2 Installing / Uninstalling a card reader / a floppy disk drive

Installing a card reader

To install a card reader:

1. Insert the card reader to the 3.5 inch drive bay and carefully push the card reader until its screw holes are aligned with the holes on the supporting stand.
2. Pull the retention brackets on both sides of the bay outward and align the hard disk to the retention brackets.
3. Press the retention bracket locks until they are parallel to the card reader.
4. Connect the power cable and the signal cable..



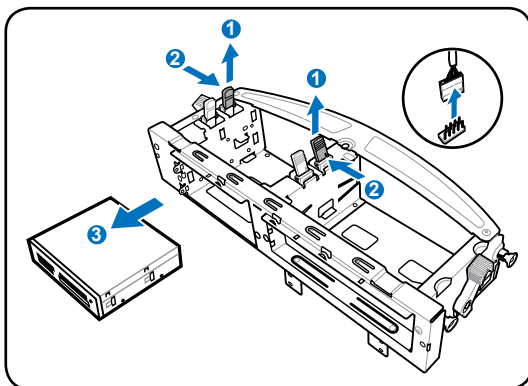
Installing a floppy disk drive

Follow the same instructions as shown in the section of “Installing a card reader” to install a floppy disk drive.

Uninstalling a card reader / floppy disk drive

To uninstall a card reader:

1. Pull the retention bracket locks upward until they are vertical to the hard disk.
2. Push the retention brackets inward to disengage the card reader.
3. Remove the card reader from the back of the supporting stand.



Before you uninstall a card reader, be certain to unplug the cables.

Uninstalling a floppy disk drive

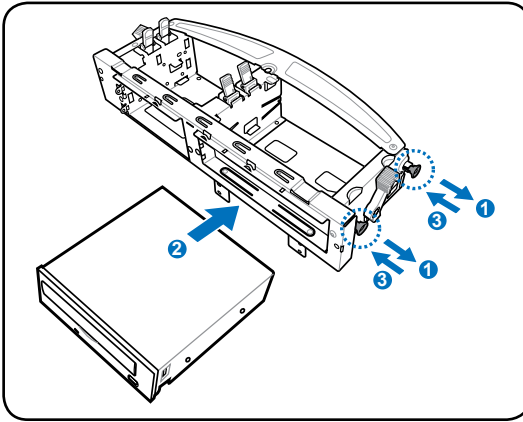
Follow the same instructions as shown in the section of “Uninstalling a card reader” to uninstall a floppy disk drive.

2.6.3 Installing / Uninstalling an optical disk drive

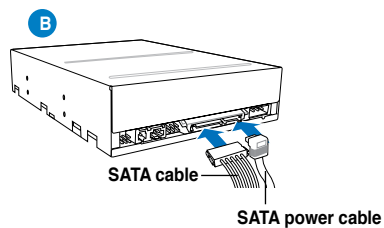
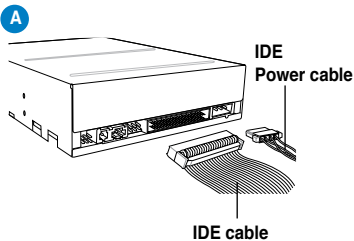
Installing an optical disk drive

To install an optical disk drive:

1. Insert the optical disk to the 5.25 inch drive bay and carefully push the disk until its screws holes align with the holes on the supporting stand.
2. Pull the retention brackets on both sides of the bay outward and align the optical disk to the retention brackets.
3. Press the retention bracket locks until they are parallel to the hard disk.



- You can install an IDE optical disk drive with an IDE power cable and an IDE cable (A) into the drive bay.
- You can install a Serial ATA optical disk drive with a Serial ATA power cable and a Serial ATA cable (B) into the drive bay.

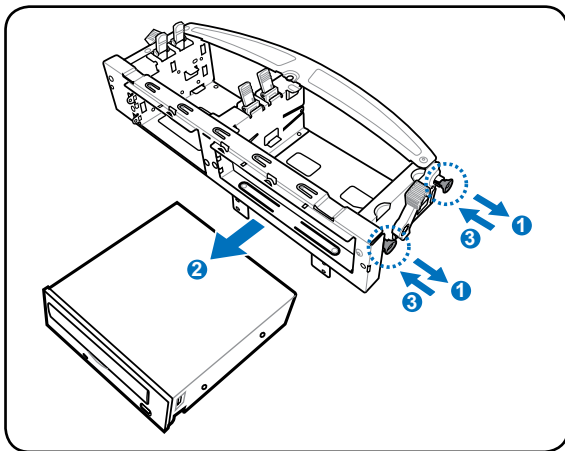


Connect the audio plug on the optical disk to the 4-pin CD connector on the motherboard to receive audio input.

Uninstalling an optical disk drive

To uninstall an optical disk drive:

1. Pull the retention bracket locks upward until they are vertical to the hard disk.
2. Push the retention brackets inward to disengage the hard disk.
3. Remove the optical disk from the back of the supporting stand.



Before you uninstall an optical disk drive, be certain to unplug the cables.

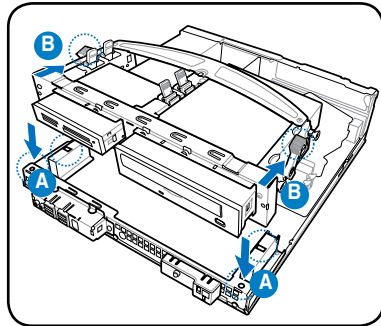
2.7 Replacing the supporting stand and the covers

After you have installed all the necessary components on the system, replace the supporting stand and the covers following the instructions in this section.

2.7.1 Replace the supporting stand

To replace the supporting stand:

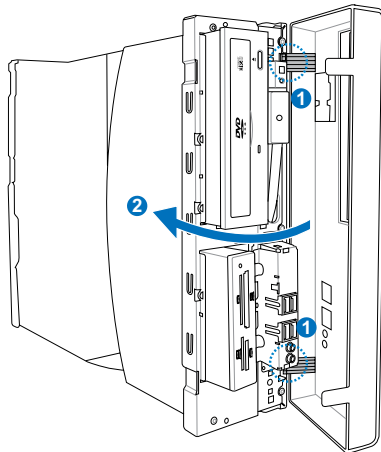
1. Insert the supporting stand into the tenons (A).
2. Push down the retention bracket locks (B) to secure the supporting stand to the system.



2.7.2 Replace the front panel assembly

To replace the front panel assembly:

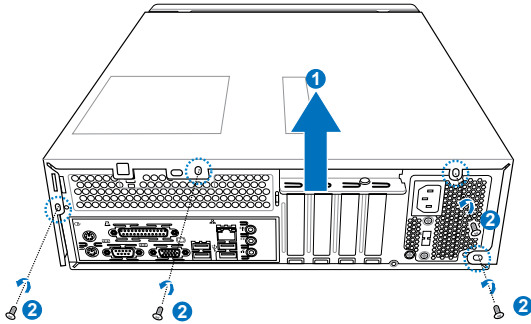
1. Place the system vertically. Insert the hinge-like tabs on the right edge of the front panel assembly into the holes on the right side of the chassis.
2. Swing the front panel assembly to the left, then insert the hooks to the chassis until the front panel assembly fits in place.



2.7.3 Replacing the system cover

To replace the system cover:

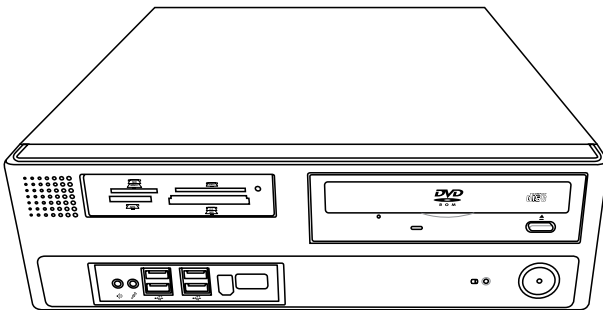
1. Place the system horizontally. Slightly push the cover toward the front panel until the side tabs are engaged into the chassis.
2. Secure the cover with the four screws that you removed earlier.



[illegible]

Chapter 3

This chapter helps you to power up the system and install drivers and utilities from the support CD.



Getting started

Chapter summary

3

3.1	Installing an operating system	3-1
3.2	Powering your system.....	3-1
3.3	Support CD information	3-2
3.4	Recovery CD.....	3-8


3.1 Installing an operating system

This motherboard supports Windows® 2000 / XP / Vista operating systems (OS). Always install the latest OS version and corresponding updates to maximize the features of your hardware. When you start the system for the first time, the system automatically detects the built-in audio and graphics chips and attempts to install the drivers. Select **NO** when a window appears asking if you want to restart the system. Install drivers according to the instructions in the following sections.



- To ensure the OS can work properly, install the VGA drivers from the bundled Support CD.
- Motherboard settings and hardware options vary. Use the setup procedures presented in this chapter for reference only. Refer to your OS documentation for detailed information.

3.2 Powering your system

Press the Power button  to power up the system, then the Power LED turns on.

3.3 Support CD information

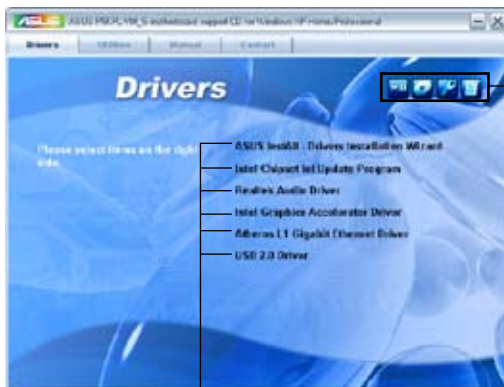
The support CD that comes with the system package contains the drivers, software applications, and utilities that you can install to avail all system features.



The contents of the support CD are subject to change at any time without notice. Visit the ASUS website at <http://www.asus.com> for updates.

3.3.1 Running the support CD

Place the support CD to the optical drive. The CD automatically displays the Drivers menu if Autorun is enabled in your computer.



Click an icon to display support CD/motherboard information

Click an item to install



If Autorun is NOT enabled in your computer, browse the contents of the support CD to locate the file ASSETUP.EXE from the BIN folder. Double-click the ASSETUP.EXE to run the CD.

3.3.2 Drivers menu

The drivers menu shows the available device drivers if the system detects installed devices. Install the necessary drivers to activate the devices.



ASUS InstAll-Drivers Installation Wizard

Installs the ASUS InstAll-Drivers Installation Wizard.

Intel(R) Chipset Inf Update Program

Installs the Intel® chipset Inf update program.

Realtek Audio Driver

Installs the Realtek® ALC883 audio driver and application.

Intel(R) Graphics Accelerator Driver

Installs the Intel® graphics accelerator driver.

Atheros L1 Gigabit Ethernet Driver

Installs the Atheros L1 Gigabit Ethernet driver.

USB 2.0 Driver

Installs the Universal Serial Bus 2.0 (USB 2.0) driver.

3.3.3 Utilities menu

The Utilities menu shows the applications and other software that the motherboard supports. Tap an item from the screen to install.



ASUS InstAll-Installation Wizard for Utilities

Installs all of the utilities through the Installation Wizard.

ASUS Update

Allows you to download the latest version of the BIOS from the ASUS website.



Before using the ASUS Update, ensure that you have an Internet connection so that you can connect to the ASUS website.

ASUS PC Probe II

This smart utility monitors the fan speed, CPU temperature, and system voltage, and alerts you of any detected problems. This utility helps you keep your computer in healthy operating condition.

Adobe Acrobat Reader 7.0

Installs the Adobe Acrobat Reader 7.0.

The manuals in the Support CD are in PDF (Portable Document Format) format, which can be opened with Adobe Acrobat Reader. Refer to the additional instruction for details.

Atheros Ethernet utility

Installs the Atheros Ethernet utility.

Technical support Form

Displays the ASUS Technical Support Request Form that you have to fill out when requesting technical support.



Technical - Polished

File: E:\P... Main: Main: MB

ASUSTeK TECHNICAL SUPPORT REQUEST FORM DATE:

MINIATOR DESCRIPTION

COMPANY NAME:	CONTACT NAME:
PHONE (COUNTRY):	CELL # (AREA):
EMAIL ADDRESS:	

HARDWARE DESCRIPTION

MOTHERBOARD:	REVISION #1:	10004402AD-
CPU BRAND:	SPEED(MHz):	1228 (MB)
RAM BRAND:	SPEED(MHz):	1228 (MB)
CACHE BRAND:	SPEED(MHz):	1228 (MB)
RAID CARD:	MODEL NAME:	1228 (MB)
BACKUP BRAND:	MODEL NAME:	1228 (MB)
OTHER STORAGE:	MODEL NAME:	1228 (MB)

ADD-IN CARD DESCRIPTION (MODEL NAME/VENDOR)

PCI/ISA SLOT 1:	
PCI/ISA SLOT 2:	
PCI/ISA SLOT 3:	
PCI/ISA SLOT 4:	
PCI-E SLOT 1:	
PCI-E SLOT 2:	
PCI-E SLOT 3:	
PCI-E SLOT 4:	
PCI-E SLOT 5:	
PCI-E SLOT 6:	
PCI-E SLOT 7:	
PCI-E SLOT 8:	
PCI-E SLOT 9:	
PCI-E SLOT 10:	

SOFTWARE DESCRIPTION

Filelist

Displays the contents of the support CD and a brief description of each in text format.



Technical - Polished

File: E:\P... Main: Main: MB

File list for the included support software for P500L-M motherboard

File Name	Description
-chipset	-Intel(R) Chipset software installation utility v6.3.0.1011 for
-audio	-Realtek AL7860 Audio Driver v5.1.0.1458 for windows xp & x86
-lan	-Realtek AL7860 Audio Driver v6.0.1.1458 for windows vista and
-vga	-NVIDIA driver v2.1.0.000.2 and utility v2.1.00.0 for windows
-vga	-NVIDIA driver v2.1.0.000.2 and utility v2.1.00.0 for windows
-vga	-Intel(R) graphics media Accelerator Driver v6.24.00.4894 for
-vga	-Intel(R) graphics media Accelerator Driver v7.14.10.1112 for
-vga	-VISTA 64 driver installation for windows 2000/XP.
-manual	-user guide PDF file.
-software	
-AC97BAT	-ASUS Reader v1.0 for windows 2000/XP/2003 & x86/x64/64
-BIOS	-ASUS Reader v1.0 for windows 2000/XP/2003 & x86/x64/64
-BIOS	-Information on how to use the ASUS PLAT 505 utility.
-BIOS	-utility v2.16 for update the motherboard's BIOS.

3.4 Recovery CD

The ASUS PC Recovery CD assists you in reinstalling the OS and restoring it to its original working state. Before using the recovery CD, copy your data files to a USB device or to a network drive and make note of any customized configuration settings such as network settings.

To recover a Windows XP OS:

1. Insert the first Recovery CD into the Optical Disk Drive. Press **<F8>** when the ASUS logo appears. Select the optical drive as the boot device.
2. Select **Recover system to a partition** or **Recovery system to entire HD**. Click **Next**.
3. A confirmation screen pops up. Click **Next** to confirm.
4. Check **I accept** from the succeeding screen and click **Next**.
5. A list displays the contents you are going to recover. Click **Yes** to confirm. The recovery process starts.
6. Insert the second CD, then click **OK**.
7. Insert the Support CD, then click **OK**. The system restarts.
8. After the system reboots, the Windows XP will begin system configurations. Follow the onscreen instructions to complete the process, and then restarts the system. Adjust the screen to a suitable display resolution.



The ASUS PC Recovery CD is for ASUS Desktop PC only. DO NOT use it on other systems. Visit the ASUS website at www.asus.com for any updates.

To recover a Windows Vista OS:

1. Turn on your ASUS Desktop PC and press **F8** when the ASUS logo appears.
2. Insert the recovery CD into the optical drive when a **Please select boot device** menu appears. Select the optical drive as the boot device and then press **Enter** to continue.



If you want to recover the system from the hidden partition, press **F9** when the ASUS logo appears. Then follow the instructions 3-6 below.

3. After the system reboots, an ASUS Preload window appears. Press **Next** to continue.
4. Select where to install a new system. Options are:

Recover Windows to first partition only:

This option will delete only the first partition, allowing you to keep other partitions, and create a new system partition as drive "C".

Recover Windows to entire HD:

This option will delete all partitions from your hard disk and create a new system partition as drive "C".

Recover Windows to entire HD with 2 partitions:

This option will delete all partitions from your hard disk and create two new system partitions. The first partition takes up 60% of the whole hard disk size and the second partition takes up 40%. The new system will be installed in the first partition. You can back up your data in the second partition.

5. When a window appears querying **Are you sure you want to recover now**, click **Finish**. The process percentage finished will be displayed on the screen.
6. When **Recovery finish** message appears, click **OK** and the system restarts. After it restarts, follow the onscreen instructions to complete system configurations.



The ASUS PC Recovery CD is for ASUS Desktop PC only. DO NOT use it on other systems. Visit the ASUS website at www.asus.com for any updates.

[illegible]