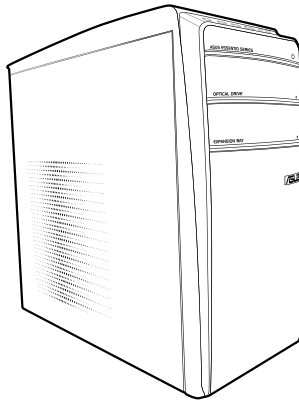




# **ASUS Essentio Desktop PC**

## **CM1630**

### **User Manual**



E5892

First Edition V1

May 2010

**Copyright © 2010 ASUSTeK Computer Inc. All Rights Reserved.**

No part of this manual, including the products and software described in it, may be reproduced, transmitted, transcribed, stored in a retrieval system, or translated into any language in any form or by any means, except documentation kept by the purchaser for backup purposes, without the express written permission of ASUSTeK Computer Inc. ("ASUS").

Product warranty or service will not be extended if: (1) the product is repaired, modified or altered, unless such repair, modification or alteration is authorized in writing by ASUS; or (2) the serial number of the product is defaced or missing.

ASUS PROVIDES THIS MANUAL "AS IS" WITHOUT WARRANTY OF ANY KIND, EITHER EXPRESS OR IMPLIED, INCLUDING BUT NOT LIMITED TO THE IMPLIED WARRANTIES OR CONDITIONS OF MERCHANTABILITY OR FITNESS FOR A PARTICULAR PURPOSE. IN NO EVENT SHALL ASUS, ITS DIRECTORS, OFFICERS, EMPLOYEES OR AGENTS BE LIABLE FOR ANY INDIRECT, SPECIAL, INCIDENTAL, OR CONSEQUENTIAL DAMAGES (INCLUDING DAMAGES FOR LOSS OF PROFITS, LOSS OF BUSINESS, LOSS OF USE OR DATA, INTERRUPTION OF BUSINESS AND THE LIKE), EVEN IF ASUS HAS BEEN ADVISED OF THE POSSIBILITY OF SUCH DAMAGES ARISING FROM ANY DEFECT OR ERROR IN THIS MANUAL OR PRODUCT.

SPECIFICATIONS AND INFORMATION CONTAINED IN THIS MANUAL ARE FURNISHED FOR INFORMATIONAL USE ONLY, AND ARE SUBJECT TO CHANGE AT ANY TIME WITHOUT NOTICE, AND SHOULD NOT BE CONSTRUED AS A COMMITMENT BY ASUS. ASUS ASSUMES NO RESPONSIBILITY OR LIABILITY FOR ANY ERRORS OR INACCURACIES THAT MAY APPEAR IN THIS MANUAL, INCLUDING THE PRODUCTS AND SOFTWARE DESCRIBED IN IT.

Products and corporate names appearing in this manual may or may not be registered trademarks or copyrights of their respective companies, and are used only for identification or explanation and to the owners' benefit, without intent to infringe.

# Contents

Notices .....v

Safety information..... vii

Conventions used in this guide..... viii

Where to find more information ..... viii

Package contents ..... ix

**Chapter 1:      Getting started**

Welcome!..... 1-1

Getting to know your computer..... 1-1

Setting up your computer..... 1-5

Turning your computer ON/OFF ..... 1-8

**Chapter 2:      Using Windows® 7**

Starting for the first time..... 2-1

Using Windows® 7 desktop..... 2-2

Managing your files and folders..... 2-7

Restoring your system ..... 2-10

Protecting your computer..... 2-11

Getting Windows® Help and Support..... 2-15

**Chapter 3:      Connecting devices to your computer**

Connecting a USB storage device..... 3-1

Connecting microphone and speakers ..... 3-2

Connecting multiple external displays ..... 3-5

Connecting an HDTV..... 3-7

**Chapter 4:      Using your computer**

Proper posture when using your Desktop PC..... 4-1

Using the memory card reader ..... 4-2

Using the optical drive ..... 4-3

Using the multimedia keyboard (on selected models only) ..... 4-4

**Chapter 5:      Connecting to the Internet**

Wired connection ..... 5-1

Wireless connection (on selected models only)..... 5-3

# Contents

## Chapter 6: Using the Utilities

ASUS AI Manager.....	6-1
ASUS EPU-4 Engine .....	6-6
ASUS Update .....	6-10
ASUS MyLogo2™ .....	6-11
Nero 9 .....	6-12
Recovering your system .....	6-16

## Chapter 7: Troubleshooting



# Notices

## REACH

Complying with the REACH (Registration, Evaluation, Authorisation, and Restriction of Chemicals) regulatory framework, we published the chemical substances in our products at ASUS REACH website at <http://green.asus.com/english/REACH.htm>

## Federal Communications Commission Statement

This device complies with Part 15 of the FCC Rules. Operation is subject to the following two conditions:

- This device may not cause harmful interference; and
- This device must accept any interference received including interference that may cause undesired operation.

This equipment has been tested and found to comply with the limits for a Class B digital device, pursuant to Part 15 of the FCC Rules. These limits are designed to provide reasonable protection against harmful interference in a residential installation. This equipment generates, uses and can radiate radio frequency energy and, if not installed and used in accordance with manufacturer's instructions, may cause harmful interference to radio communications. However, there is no guarantee that interference will not occur in a particular installation. If this equipment does cause harmful interference to radio or television reception, which can be determined by turning the equipment off and on, the user is encouraged to try to correct the interference by one or more of the following measures:

- Reorient or relocate the receiving antenna.
- Increase the separation between the equipment and receiver.
- Connect the equipment to an outlet on a circuit different from that to which the receiver is connected.
- Consult the dealer or an experienced radio/TV technician for help.



---

The use of shielded cables for connection of the monitor to the graphics card is required to assure compliance with FCC regulations. Changes or modifications to this unit not expressly approved by the party responsible for compliance could void the user's authority to operate this equipment.

---

## RF exposure warning

This equipment must be installed and operated in accordance with provided instructions and the antenna(s) used for this transmitter must be installed to provide a separation distance of at least 20 cm from all persons and must not be co-located or operating in conjunction with any other antenna or transmitter. End-users and installers must be provide with antenna installation instructions and transmitter operating conditions for satisfying RF exposure compliance.

## Canadian Department of Communications Statement

This digital apparatus does not exceed the Class B limits for radio noise emissions from digital apparatus set out in the Radio Interference Regulations of the Canadian Department of Communications.

This class B digital apparatus complies with Canadian ICES-003.

## Macrovision Corporation Product Notice

This product incorporates copyright protection technology that is protected by method claims of certain U.S. patents and other intellectual property rights owned by Macrovision Corporation and other rights owners. Use of this copyright protection technology must be authorized by Macrovision Corporation, and is intended for home and other limited viewing uses only **unless otherwise authorized by Macrovision Corporation**. Reverse engineering or disassembly is prohibited.

### *Lithium-Ion Battery Warning*

**CAUTION:** Danger of explosion if battery is incorrectly replaced. Replace only with the same or equivalent type recommended by the manufacturer. Dispose of used batteries according to the manufacturer's instructions.

## Safety information



---

Disconnect the AC power and peripherals before cleaning. Wipe the Desktop PC using a clean cellulose sponge or chamois cloth dampened with solution of nonabrasive detergent and a few drops of warm water then remove any extra moisture with a dry cloth.

---

- **DO NOT** place on uneven or unstable work surfaces. Seek servicing if the casing has been damaged.
- **DO NOT** expose to dirty or dusty environments. **DO NOT** operate during a gas leak.
- **DO NOT** place or drop objects on top and do not shove any foreign objects into the Desktop PC.
- **DO NOT** expose to strong magnetic or electrical fields.
- **DO NOT** expose to or use near liquids, rain, or moisture. **DO NOT** use the modem during electrical storms.
- Battery safety warning: **DO NOT** throw the battery in fire. **DO NOT** short circuit the contacts. **DO NOT** disassemble the battery.
- Use this product in environments with ambient temperatures between 0°C (32°F) and 35°C (95°F).
- **DO NOT** cover the vents on the Desktop PC to prevent the system from getting overheated.
- **DO NOT** use damaged power cords, accessories, or other peripherals.
- To prevent electrical shock hazard, disconnect the power cable from the electrical outlet before relocating the system.
- Seek professional assistance before using an adapter or extension cord. These devices could interrupt the grounding circuit.
- Ensure that your power supply is set to the correct voltage in your area. If you are not sure about the voltage of the electrical outlet you are using, contact your local power company.
- If the power supply is broken, do not try to fix it by yourself. Contact a qualified service technician or your retailer.

## Conventions used in this guide

To ensure that you perform certain tasks properly, take note of the following symbols used throughout this manual.



**DANGER/WARNING:** Information to prevent injury to yourself when trying to complete a task.



**CAUTION:** Information to prevent damage to the components when trying to complete a task.



**IMPORTANT:** Instructions that you **MUST** follow to complete a task.



**NOTE:** Tips and additional information to help you complete a task.

## Where to find more information

Refer to the following sources for additional information and for product and software updates.




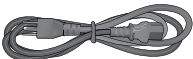



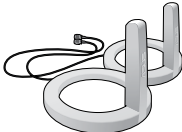
### ASUS websites

The ASUS website provides updated information on ASUS hardware and software products. Refer to the ASUS website [www.asus.com](http://www.asus.com).

### ASUS Local Technical Support

Visit ASUS website at <http://support.asus.com/contact> for the contact information of local Technical Support Engineer.

# Package contents

		
ASUS Essentio Desktop PC	Keyboard x1	Mouse x1
		
Power cord x1	Nero 9 burning software DVD x1	Installation Guide x1
		
Warranty card x1	Antenna (optional) x2	



- If any of the above items is damaged or missing, contact your retailer.
- The illustrated items above are for reference only. Actual product specifications may vary with different models.

# Chapter 1

## Getting started

### Welcome!

Thank you for purchasing the ASUS Essentio CM1630 Desktop PC!

The ASUS Essentio CM1630 Desktop PC provides cutting-edge performance, uncompromised reliability, and user-centric utilities. All these values are encapsulated in a stunningly futuristic and stylish system casing.



---

Read the ASUS Warranty Card before setting up your ASUS Desktop PC.

---

### Getting to know your computer

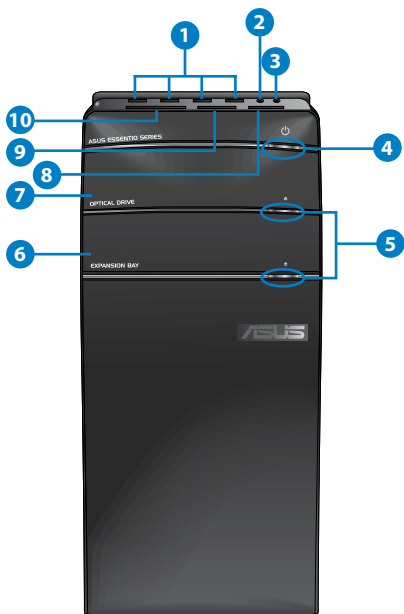


---

Illustrations are for reference only. The ports and their locations, and the chassis color vary with different models.

---

#### Front panel



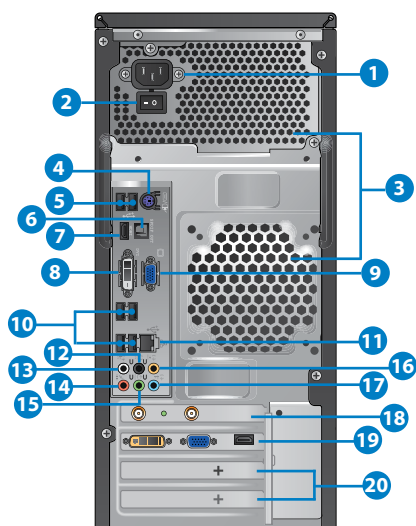
---

Click the number to view its corresponding description.

---

1. **USB 2.0 ports.** These Universal Serial Bus 2.0 (USB 2.0) ports connect to USB 2.0 devices such as a mouse, printer, scanner, camera, PDA, and others.
2. **Microphone port (pink).** This port connects to a microphone.
3. **Headphone port (lime).** This port connects to a headphone or speaker.
4. **Power button.** Press this button to turn on your computer.
5. **Optical disk drive eject button.** Press this button to eject the optical disk drive tray.
6. **Optical disk drive bay (empty).** Allows you to install an additional optical disk drive in this bay.
7. **Optical disk drive bay.** There is an optical disk drive in this bay.
8. **Memory Stick™ / Memory Stick Pro™ card slot.** Insert a Memory Stick™ / Memory Stick Pro™ card into this slot.
9. **Secure Digital™ / MultiMediaCard slot.** Insert a Secure Digital™ / MultiMediaCard card into this slot.
10. **CompactFlash® / Microdrive™ card slot.** Insert a CompactFlash® / Microdrive™ card into this slot.

## Rear panel



Click the number to view its corresponding description.

1. **Power connector.** Plug the power cord to this connector.
2. **Power switch.** Switch to turn ON/OFF the power supply to your computer.
3. **Air vents.** These vents allow air ventilation.

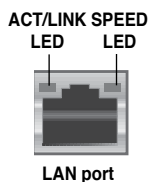


DO NOT block the air vents on the chassis. Always provide proper ventilation for your computer.

4. **PS/2 Keyboard / Mouse Combo port (purple).** This port is for a PS/2 keyboard or mouse.
5. **USB 2.0 ports.** These Universal Serial Bus 2.0 (USB 2.0) ports connect to USB 2.0 devices such as a mouse, printer, scanner, camera, PDA, and others.
6. **Optical S/PDIF\_OUT port.** This port connects to an external audio output device via an optical S/PDIF cable.
7. **HDMI port.** This port is for a High-Definition Multimedia Interface (HDMI) connector, and is HDCP compliant allowing playback of HD DVD, Blu-ray, and other protected content.
8. **DVI-D port.** This port is for any DVI-D compatible device and is HDCP compliant allowing playback of HD DVD, Blu-ray, and other protected content.
9. **VGA port.** This port is for VGA-compatible devices such as a VGA monitor.
10. **USB 2.0 ports.** These Universal Serial Bus 2.0 (USB 2.0) ports connect to USB 2.0 devices such as a mouse, printer, scanner, camera, PDA, and others.
11. **LAN (RJ-45) port.** This port allows Gigabit connection to a Local Area Network (LAN) through a network hub.

#### LAN port LED indications

Activity/Link LED		Speed LED	
Status	Description	Status	Description
OFF	No link	OFF	10Mbps connection
ORANGE	Linked	ORANGE	100Mbps connection
BLINKING	Data activity	GREEN	1Gbps connection





12. **Rear Speaker Out port (black).** This port connects to the rear speakers in a 4, 6, and 8-channel audio configuration.
13. **Side Speaker Out port (gray).** This port connects to the side speakers in an 8-channel audio configuration.
14. **Microphone port (pink).** This port connects to a microphone.
15. **Line Out port (lime).** This port connects to a headphone or speaker. In a 4, 6, or 8-channel configuration, the function of this port becomes Front Speaker Out.
16. **Center/Subwoofer port (orange).** This port connects to the center/subwoofer speakers.
17. **Line In port (light blue).** This port connects to a tape, CD, DVD player, or other audio sources.



Refer to the audio configuration table below for the function of the audio ports in a 2, 4, 6, or 8-channel configuration.

#### Audio 2, 4, 6, or 8-channel configuration

Port	Headset 2-channel	4-channel	6-channel	8-channel
Light Blue	Line In	Line In	Line In	Line In
Lime	Line Out	Front Speaker Out	Front Speaker Out	Front Speaker Out
Pink	Mic In	Mic In	Mic In	Mic In
Orange	—	—	Center/Subwoofer	Center/Subwoofer
Black	—	Rear Speaker Out	Rear Speaker Out	Rear Speaker Out
Gray	—	—	—	Side Speaker Out

18. **ASUS WLAN Card (on selected models only).** This optional WLAN card allows your computer to connect to a wireless network.
19. **ASUS Graphics Card (on selected models only).** The display output ports on this optional ASUS Graphics Card may vary with different models.
20. **Expansion slot bracket.** Remove the expansion slot bracket when installing an expansion card.

## Setting up your computer

This section guides you through connecting the main hardware devices, such as the external monitor, keyboard, mouse, and power cord, to your computer.

### Connecting an external monitor

#### Using the ASUS Graphics Card (on selected models only)

Connect your monitor to the display output port on the discrete ASUS Graphics Card.

#### To connect an external monitor using the ASUS Graphics Card:

1. Connect a monitor to a display output port on the ASUS Graphics Card.
2. Plug the monitor to a power source.



---

The display output ports on the ASUS Graphics Card may vary with different models.

---

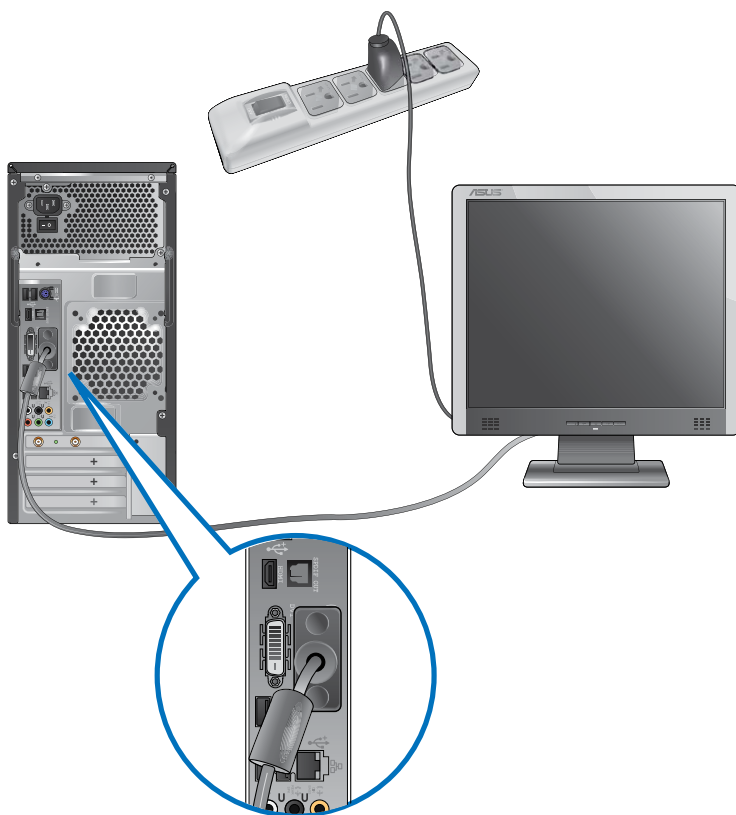


## Using the onboard display output ports

Connect your monitor to the onboard display output port.

### To connect an external monitor using the onboard display output ports:

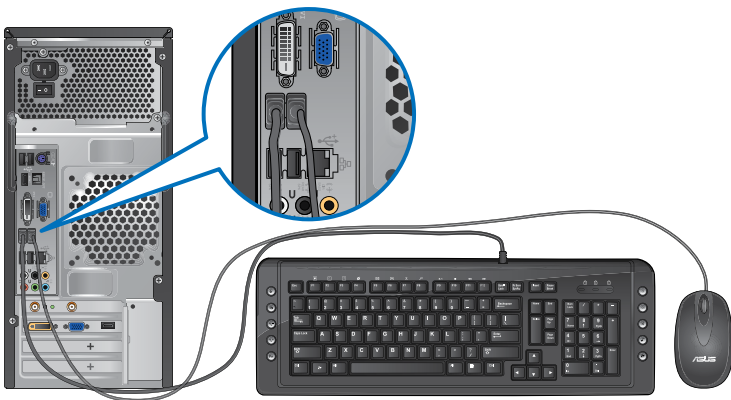
1. Connect a VGA monitor to the VGA port, or a DVI-D monitor to the DVI-D port, or an HDMI monitor to the HDMI port on the rear panel of your computer.
2. Plug the monitor to a power source.



- If your computer comes with an ASUS Graphics Card, the graphics card is set as the primary display device in the BIOS. Hence, connect your monitor to a display output port on the graphics card.
- To connect multiple external monitors to your computer, refer to **Connecting multiple external monitors** in Chapter 3 of this user manual for details.

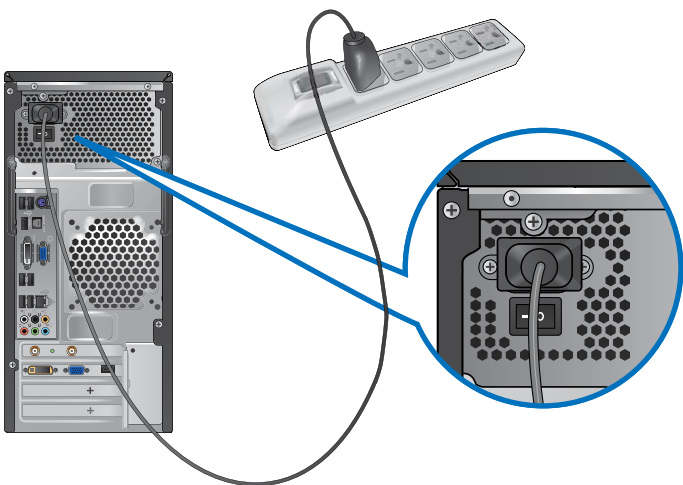
## Connecting a USB keyboard and a USB mouse

Connect a USB keyboard and a USB mouse to the USB ports on the rear panel of your computer.



## Connecting the power cord

Connect one end of the power cord to the power connector on the rear panel of your computer and the other end to a power source.



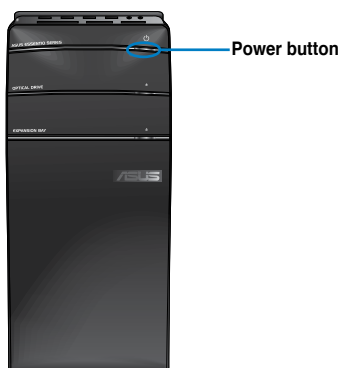
# Turning your computer ON/OFF

This section describes how to turn on/off your computer after setting up your computer.

## Turning your computer ON

To turn your computer ON:


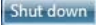
1. Turn on the power switch.
2. Turn your monitor ON.
3. Press the power button on your computer.



4. Wait until the operating system loads automatically.

## Turning your computer OFF

To turn your computer OFF:

1. Close all running applications.
2. Click  on the Windows® desktop.
3. Click  to shut down the operating system.

# Chapter 2

## Using Windows® 7

### Starting for the first time

When you start your computer for the first time, a series of screens appear to guide you in configuring the basic settings of your Windows® 7 operating system.

#### To start for the first time:

1. Turn your computer on. Wait for a few minutes until the **Set Up Windows** screen appears.
2. From dropdown list, select your language. Click **Next**.
3. From the dropdown lists, select your **Country or region**, **Time and currency**, and **Keyboard layout**. Click **Next**.
4. Key in unique names for the **user name** and **computer name**. Click **Next**.
5. Key in the necessary information to set up your password, then click **Next**. You may also click **Next** to skip this step without entering any information.



---

If you want to set up a password for your account later, refer to the section **Setting up a user account and password** in this chapter.


---

6. Carefully read the license terms. Tick **I accept the license terms** and click **Next**.
7. Select **Use recommended settings** or **Install important updates only** to set up the security settings for your computer. To skip this step, select **Ask me later**.
8. Review your date and time settings. Click **Next**. The system loads the new settings and restarts. You may now start using your computer.

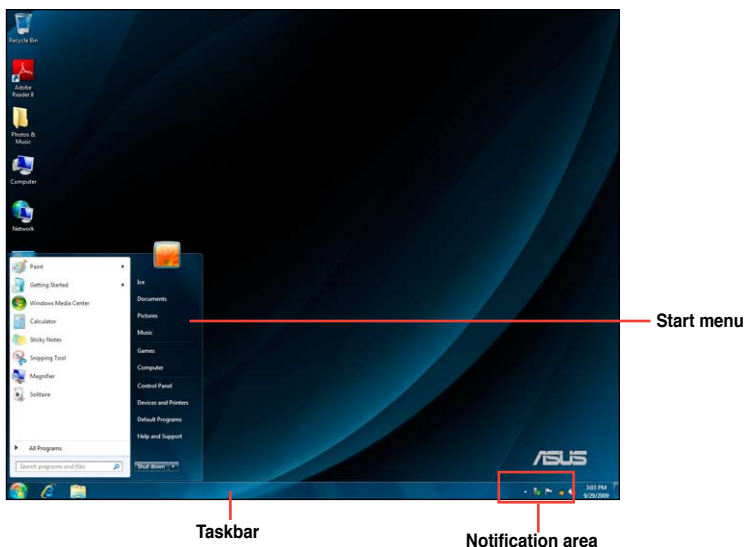
# Using Windows® 7 desktop



---

Click the Start icon  > Help and Support to obtain more information about Windows® 7.

---




## Using the Start menu

The Start menu gives you access to programs, utilities, and other useful items on your computer. It also provides you with more information about Windows 7 through its **Help and Support** feature.

## Launching items from the Start menu

To launch items from the Start menu:

1. From the Windows® taskbar, click the Start icon .
2. From the Start menu, select the item that you want to launch.



---


You may pin programs that you want constantly displayed on the Start menu. For more details, refer to the section **Pinning programs on the Start menu or taskbar** on this chapter.

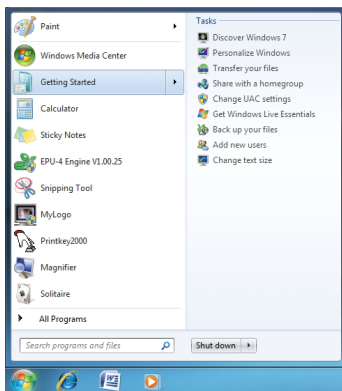
---

## Using the Getting Started item

The **Getting Started** item on the Start menu contains information about some basic tasks such as personalizing Windows®, adding new users, and transferring files to help you to familiarize yourself with using Windows® 7.

### To use the Getting Started item:

1. From the Windows® taskbar, click the Start icon  to launch the Start menu.
2. Select **Getting Started**. The list of available tasks appears.
3. Select the task that you want to do.



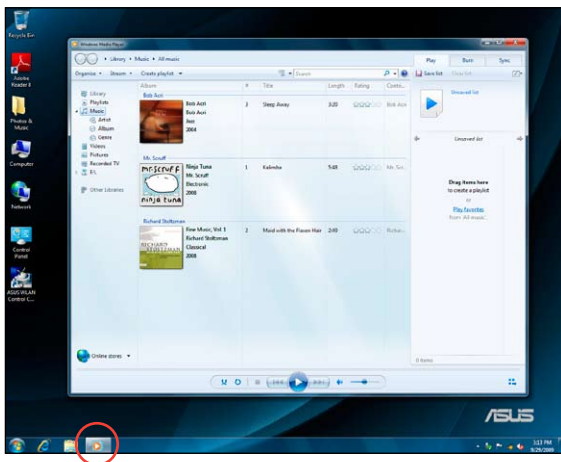
## Using the taskbar

The taskbar allows you to launch and manage programs or items installed on your computer.

### Launching a program from the taskbar

#### To launch a program from the taskbar:

- From the Windows® taskbar, click an icon to launch it. Click the icon again to hide the program.



You may pin programs that you want constantly displayed on the taskbar. For more details, refer to the section **Pinning programs on the Start menu or taskbar** on this chapter.

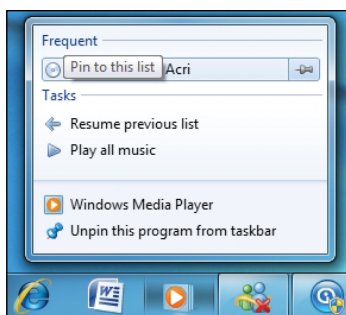


## Pinning items on the jumplists

When you right-click an icon on the taskbar, a jumplist launches to provide you with quick-access to the program's or item's related links. You may pin items on the jumplist such as favorite websites, often-visited folders or drives, or recently played media files.

### To pin items to the jumplist:

1. From the taskbar, right-click an icon.
2. From the jumplist, right-click the item that you want to pin, then select **Pin to this list**.




## Unpinning items from the jumplist

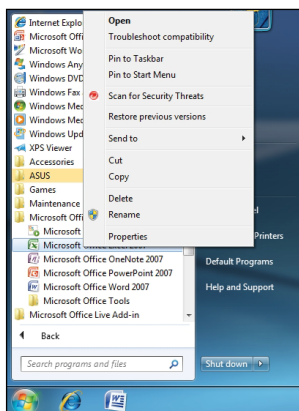
### To unpin items from the jumplist:

1. From the taskbar, right-click an icon.
2. From the jumplist, right-click the item that you want to remove from the jumplist, then select **Unpin from this list**.

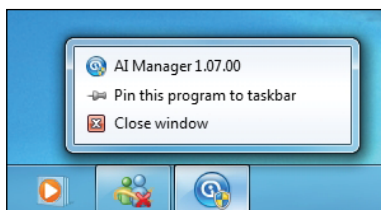
## Pinning programs on the Start menu or taskbar

### To pin programs on the Start menu or taskbar:

1. From the Windows® taskbar, click the Start icon  to launch the Start menu.
2. Right-click the item that you want to pin on the Start menu or taskbar.
3. Select **Pin to Taskbar** or **Pin to Start menu**.




You may also right-click on the icon of a running program on the taskbar, then select **Pin this program to taskbar**.



## Unpinning programs from the Start menu

To unpin programs from the Start menu:

1. From the Windows® taskbar, click the Start icon  to launch the Start menu.
2. From the Start menu, right-click the program that you want to unpin, then select **Remove from this list**.

## Unpinning programs from the taskbar




To unpin programs from the taskbar:

1. From the taskbar, right-click the program that you want to remove from the taskbar, then select **Unpin this program from taskbar**.




## Using the notification area

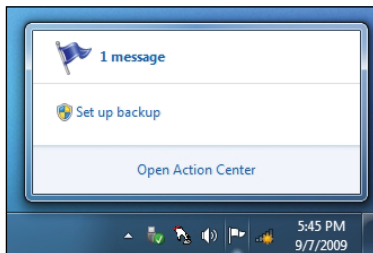
By default, the notification area shows these three icons:

	<b>Action Center notification</b> Click this icon to display all the alert messages/notifications and launch the Windows® Action Center.
	<b>Network connection</b> This icon displays the connection status and signal strength of the wired or wireless network connection.
	<b>Volume</b> Click this icon to adjust the volume.

## Displaying an alert notification

To display an alert notification:

- Click the Notification icon , then click the message to open it.




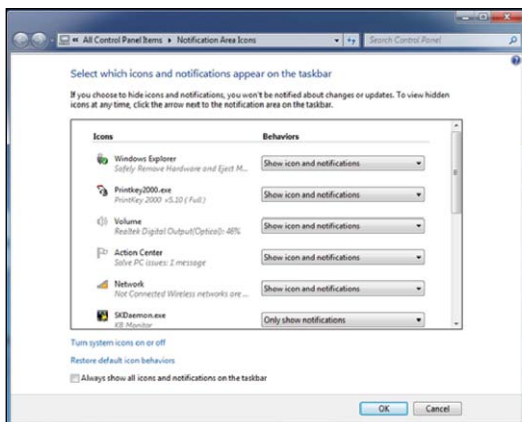
For more details, refer to the section **Using Windows® Action Center** in this chapter.

## Customizing icons and notifications

You may choose to display or hide the icons and notifications on the taskbar or on the notification area.

To customize icons and notifications:

1. From the notification area, click on the arrow icon .
2. Click **Customize**.
3. From the dropdown list, select the behaviors for the icons or items that you want customize.




# Managing your files and folders

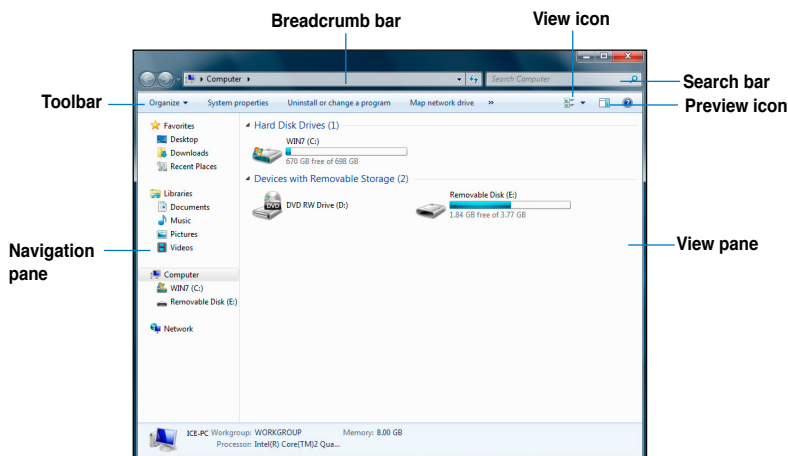
## Using Windows® Explorer

Windows® Explorer allows you to view, manage, and organize your files and folders.

### Launching Windows® Explorer

To launch Windows Explorer:

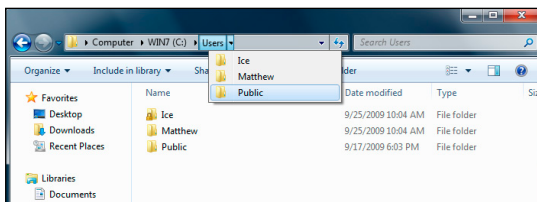
1. From the Windows® taskbar, click the Start icon  to launch the Start menu.
2. Click **Computer** to launch Windows Explorer.



## Exploring files and folders


To explore files and folders:

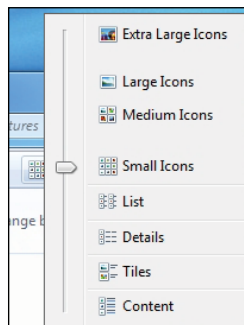
1. Launch Windows Explorer.
2. From the navigation or view pane, browse for the location of your data.
3. From the breadcrumb bar, click the arrow to display the contents of the drive or folder.



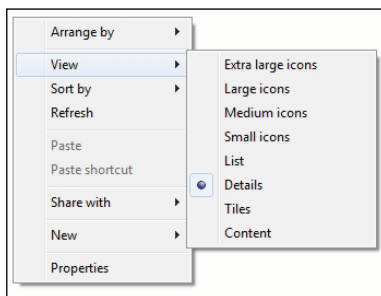
## Customizing the file/folder view

To customize the file/folder view:

1. Launch Windows Explorer.
2. From the navigation pane, select the location of your data.
3. From the toolbar, click the View icon .
4. From the View menu, move the slider to select how you want to view the file/folder.



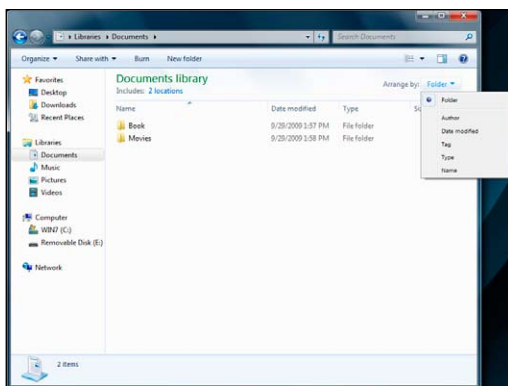
You may also right-click anywhere on the View pane, click **View**, and select the view type that you want.



## Arranging your files

To arrange your files:

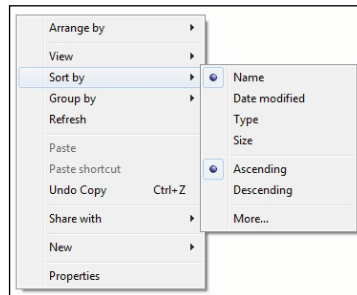
1. Launch Windows Explorer.
2. From the **Arrange by** field, click to display the dropdown list.
3. Select your preferred arrangement type.



## Sorting your files

### To sort your files:

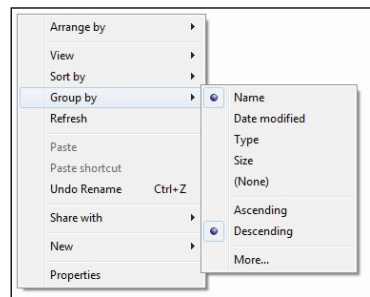
1. Launch Windows Explorer.
2. Right-click anywhere on the View pane.
3. From the menu that appears, select **Sort by**, then select your preferred sorting type.



## Grouping your files

### To group your files:

1. Launch Windows Explorer.
2. Right-click anywhere on the View pane.
3. From the menu that appears, select **Group by**, then select your preferred grouping type.



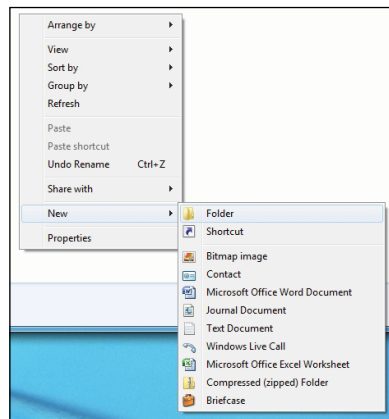
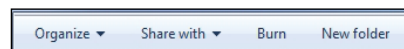
## Adding a new folder

### To add a new folder:

1. Launch Windows Explorer.
2. From the toolbar, click **New folder**.
3. Key in a name for the new folder.




You may also right-click anywhere on the View pane, click **New > Folder**.

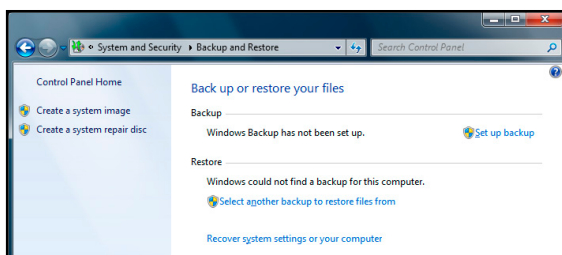


## Backing up your files

### Setting up a backup

To set up a backup:

1. Click  > **All Programs > Maintenance > Backup and Restore.**
2. Click **Set up backup.** Click **Next.**



3. Select your backup destination. Click **Next.**
4. Select **Let Windows choose (recommended)** or **Let me choose as your backup mode.**



---

If you select **Let Windows choose**, Windows will not back up your programs, FAT-formatted files, Recycle Bin files, or temporary files that are 1GB or more.


---

5. Follow the onscreen instructions to finish the process.

## Restoring your system

The Windows® System Restore feature creates a restore point where the computer's system settings are stored at certain time and date. It allows you to restore or undo changes to your computer's system settings without affecting your personal data.

To restore your system:

1. Close all running applications.
2. Click  > **All Programs > Accessories > System Tools > System Restore.**
3. Follow the onscreen instructions to complete the process.

# Protecting your computer

## Using Windows® 7 Action Center


Windows® 7 Action Center provides you with alert notifications, security information, system maintenance information, and the option to automatically troubleshoot and fix some common computer problems.

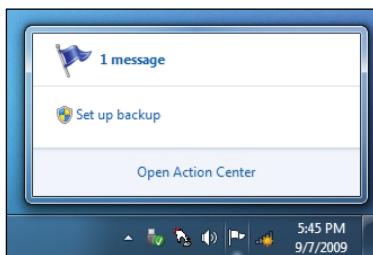


You may customize the notifications. For more details, refer to the previous section **Customizing icons and notifications** in this chapter.

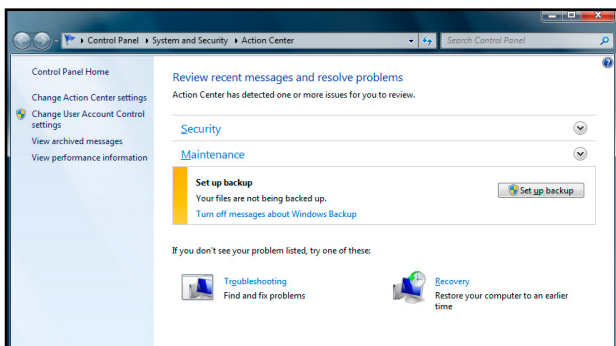
## Launching Windows® 7 Action Center

To launch Windows® 7 Action Center:

1. To launch Windows 7 Action Center, click the Notification icon , then click **Open Action Center**.



2. From Windows 7 Action Center, click the task that you want to do.






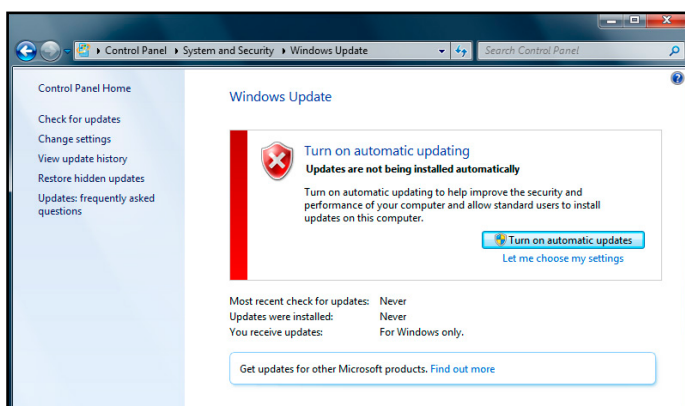
## Using Windows® Update

Windows Update allows you to check and install the latest updates to enhance the security and performance of your computer.

### Launching Windows® Update

To launch Windows® Update:

1. From the Windows® taskbar, click the Start icon  to launch the Start menu.
2. Select **All Programs > Windows Update**.
3. From the Windows Update screen, click the task that you want to do.




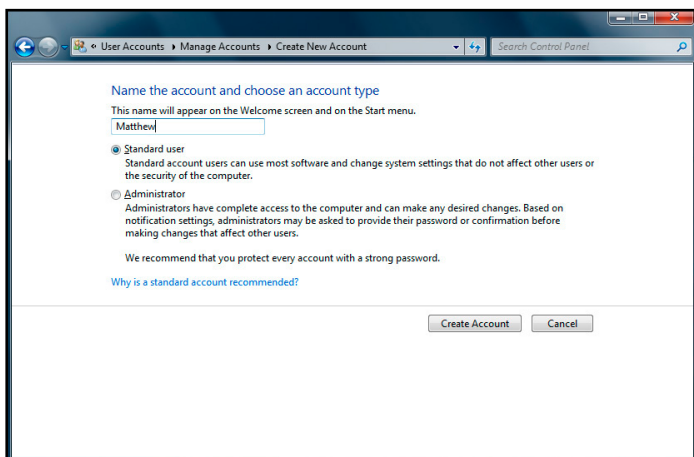
## Setting up a user account and password

You may create user accounts and passwords for people who will use your computer.

### Setting up a user account

To set up a user account:

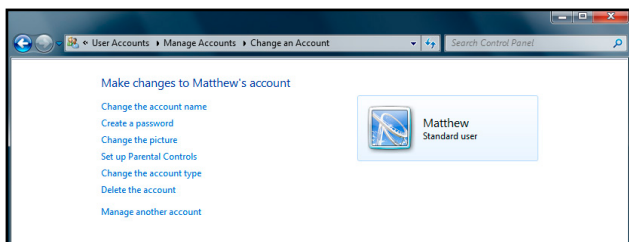
1. From the Windows® taskbar, click  > **Getting Started > Add new users.**
2. Select **Manage another account.**
3. Select **Create a new account.**
4. Key in the name of the new user.
5. Select either **Standard user** or **Administrator** as the user type.
6. When done, click **Create Account.**



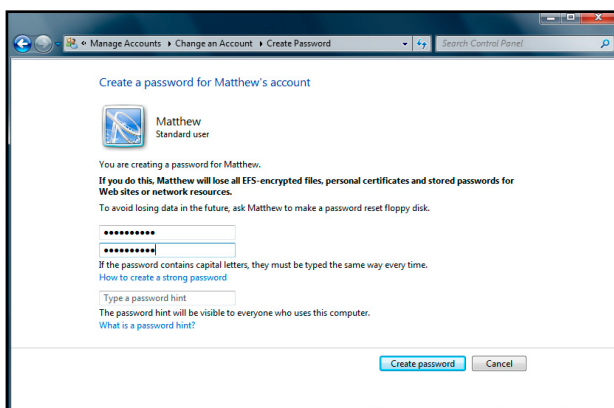
## Setting up a user's password

To set up a user's password:

1. Select the user that you would like to set a password.
2. Select **Create a password**.



3. Key in a password and confirm it. Key in your password's hint.
4. When done, click **Create password**.



## Activating the anti-virus software

Trend Micro Internet Security is pre-installed on your computer. It is a third-party anti-virus software protecting your computer from virus attacking. It is purchased separately. You have a 60-day trial period after activating it.

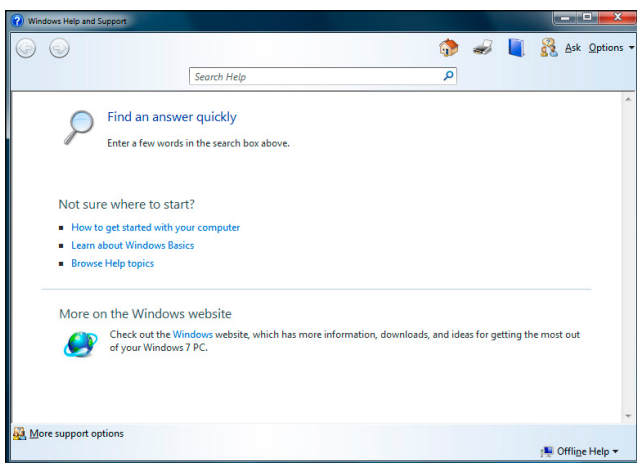
### To activate Trend Micro Internet Security:

1. Run the Trend Micro Internet Security application.
2. Carefully read the license terms. Click **Agree & Activate**.
3. Input your e-mail address and select your location. Click **Next**.
4. Click Finish to complete the activation.

## Getting Windows® Help and Support

Windows® Help and Support provides you with guides and answers in using the applications in Windows® 7 platform.

To launch Windows® Help and Support, click  > **Help and Support**.



---

Ensure that you are connected to the Internet to obtain the latest Windows® online help.

---

# Chapter 3

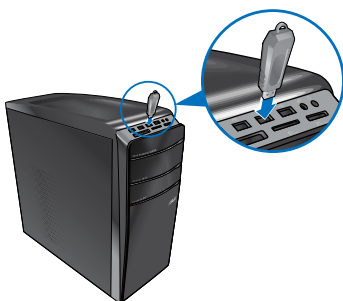
## Connecting devices to your computer

### Connecting a USB storage device

This desktop PC provides USB 2.0/1.1 ports on both the front and rear panels. The USB ports allow you to connect USB devices such as storage devices.

#### To connect a USB storage device:

- Insert the USB storage device to your computer.




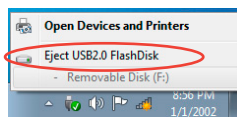
Front panel



Rear panel

#### To remove a USB storage device:

1. Click  from the Windows notification area on your computer, then click **Eject USB2.0 FlashDisk**.
2. When the **Safe to Remove Hardware** message pops up, remove the USB storage device from your computer.

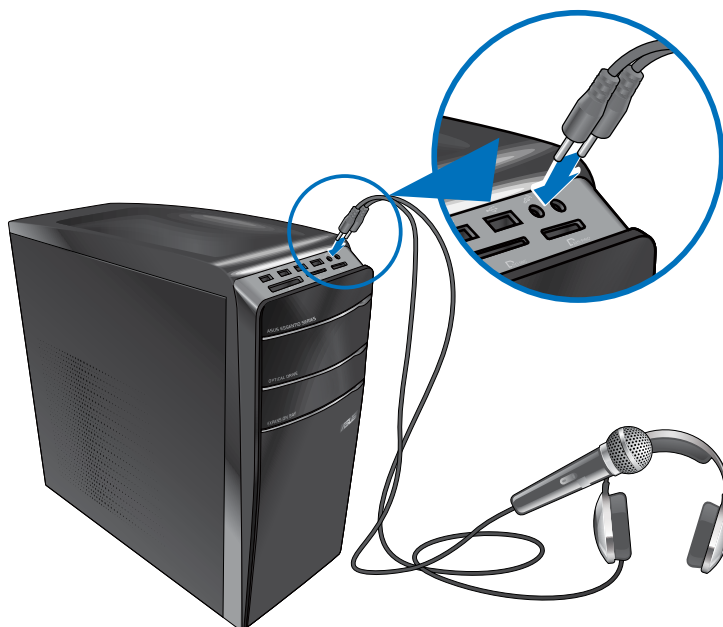


DO NOT remove a USB storage device when data transfer is in progress. Doing so may cause data loss or damage the USB storage device.

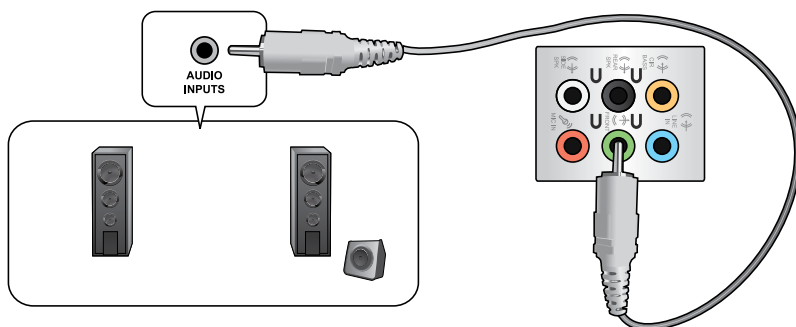
## Connecting microphone and speakers

This desktop PC comes with microphone ports and speaker ports on both the front and rear panels. The audio I/O ports located on the rear panel allow you to connect 2-channel, 4-channel, 6-channel, and 8-channel stereo speakers.

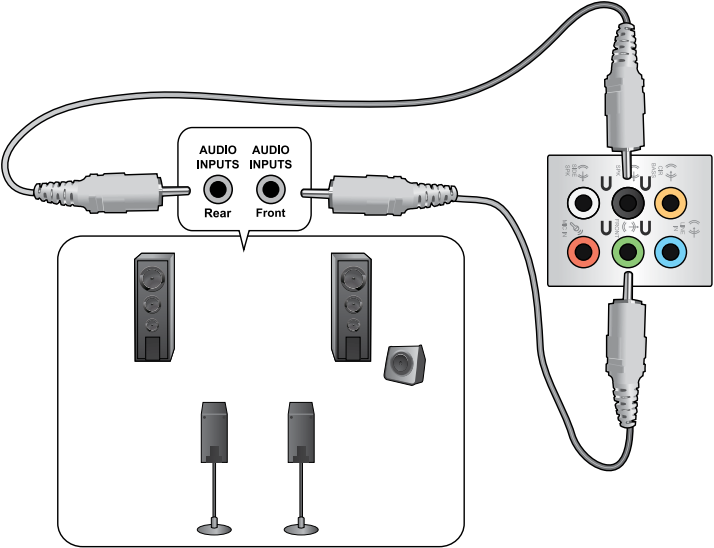
### Connecting Headphone and Mic



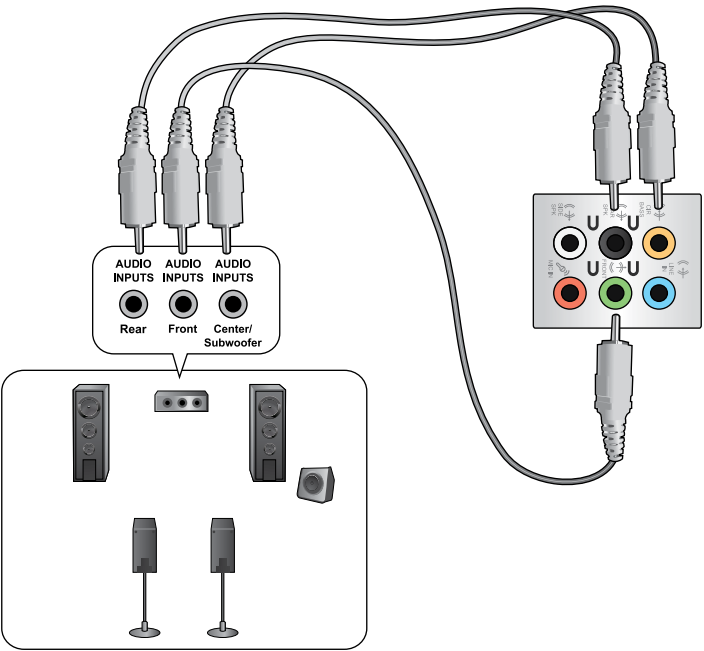
### Connecting 2-channel Speakers



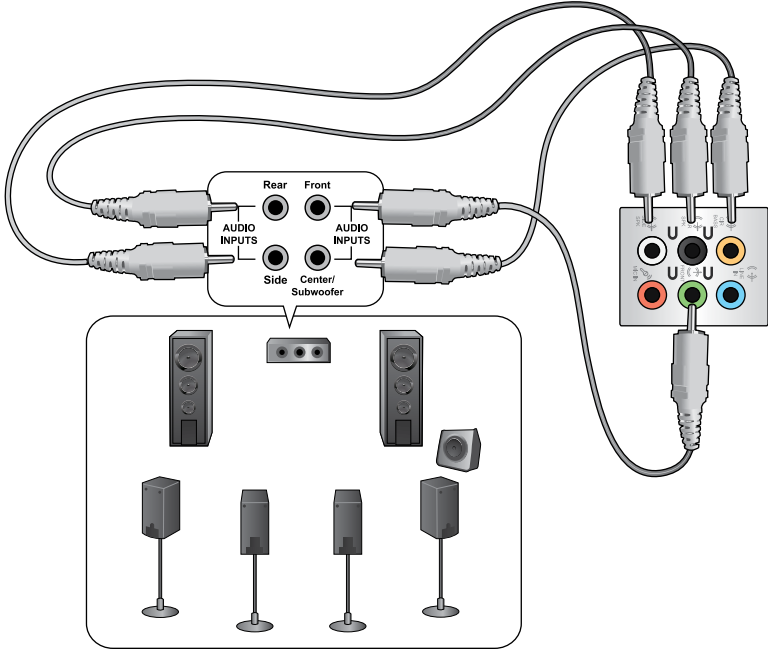
Connecting 4-channel Speakers



Connecting 6-channel Speakers



Connecting 8-channel Speakers





## Connecting multiple external displays

Your desktop PC may come with VGA, HDMI, or DVI ports and allows you to connect multiple external displays.



---

When a graphics card is installed in your computer, connect the monitors on the output ports of the graphics card.

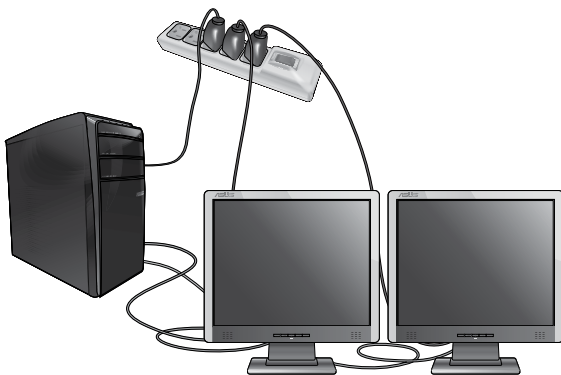
---

## Setting up multiple displays

When using multiple monitors, you are allowed to set display modes. You can use the additional monitor as a duplicate of your main display, or as an extension to enlarge your Windows desktop.

### To set up multiple displays:


1. Turn off your computer.
2. Connect the two monitors to your computer and connect the power cords to the monitors. Refer to **Setting up your computer** section in Chapter 1 for details on how to connect a monitor to your computer.

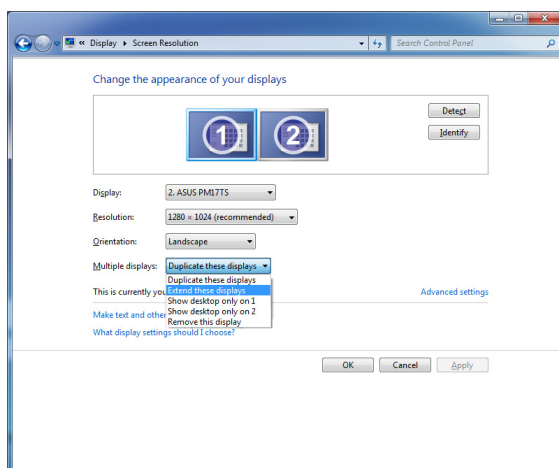


---

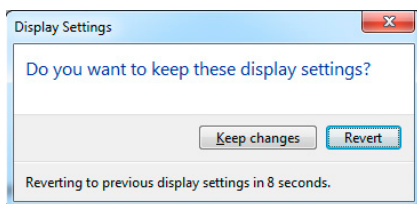
For some graphic cards, only the monitor that is set to be the primary display has display during POST. The dual display function works only under Windows.

---

3. Turn on your computer.
4. Do any of the following to open the **Screen Resolution** setting screen:
  - Click  > **Control Panel** > **Appearance and Personalization** > **Display** > **Change display settings**.
  - Right click anywhere on your Windows desktop. When the pop-up menu appears, click **Personalize** > **Display** > **Change display settings**.
5. Select the display mode from the **Multiple displays**: drop-down list.
  - **Duplicate these displays**: Select this option to use the additional monitor as a duplicate of your main display.
  - **Extend these displays**: Select this option to use the additional monitor as an extension display. This increases your desktop space.
  - **Show desktop only on 1 / 2**: Select this option to show desktop only on monitor 1 or monitor 2.
  - **Remove this display**: Select this options to remove the selected display.



6. Click **Apply** or **OK**. Then click **Keep Changes** on the confirmation message.



## Connecting an HDTV

Connect a High Definition TV (HDTV) to the HDMI port of your computer.



- You need an HDMI cable to connect the HDTV and the computer. The HDMI cable is purchased separately.
- To get the best display performance, ensure that your HDMI cable is less than 15 meters.

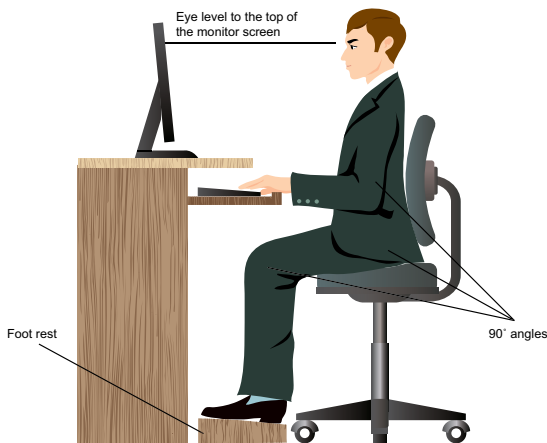


# Chapter 4

## Using your computer

### Proper posture when using your Desktop PC

When using your Desktop PC, maintaining the proper posture is necessary to prevent strain to your wrists, hands, and other joints or muscles. This section provides you with tips on avoiding physical discomfort and possible injury while using and fully enjoying your Desktop PC.

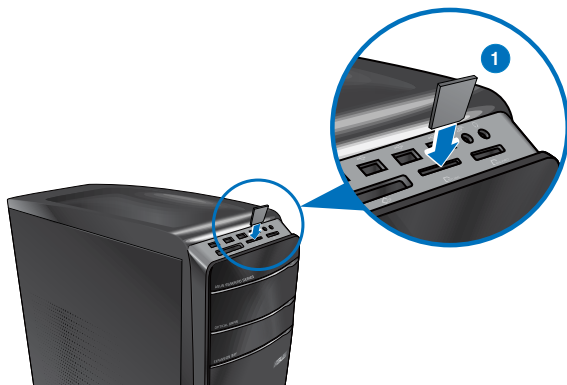


#### To maintain the proper posture:

- Position your computer chair to make sure that your elbows are at or slightly above the keyboard to get a comfortable typing position.
- Adjust the height of your chair to make sure that your knees are slightly higher than your hips to relax the backs of your thighs. If necessary, use a footrest to raise the level of your knees.
- Adjust the back of your chair so that the base of your spine is firmly supported and angled slightly backward.
- Sit upright with your knees, elbows and hips at an approximately 90° angle when you are at the PC.
- Place the monitor directly in front of you, and turn the top of the monitor screen even with your eye level so that your eyes look slightly downward.
- Keep the mouse close to the keyboard, and if necessary, use a wrist rest for support to reduce the pressure on your wrists while typing.
- Use your Desktop PC in a comfortably-lit area, and keep it away from sources of glare such as windows and straight sunlight.
- Take regular mini-breaks from using your Desktop PC.

## Using the memory card reader

Digital cameras and other digital imaging devices use memory cards to store digital picture or media files. The built-in memory card reader on the front panel of your system allows you to read from and write to different memory card drives.



### To use the memory card:

1. Insert the memory card into the card slot.



- A memory card is keyed so that it fits in only one direction. DO NOT force a card into a slot to avoid damaging the card.
- You can place media in one or more of the card slots and use each media independently. Place only one memory card in a slot at one time.

2. Select a program from the AutoPlay window to access your files.



- If AutoPlay is NOT enabled in your computer, click Windows® 7 **Start** button on the taskbar, click **Computer**, and then double-click the memory card icon to access the data on it.
- Each card slot has its own drive icon which is displayed on the **Computer** screen.
- The memory card reader LED lights up and blinks when data is being read from or written to the memory card.

3. When finished, right-click the memory card drive icon on the **Computer** screen, click **Eject**, and then remove the card.

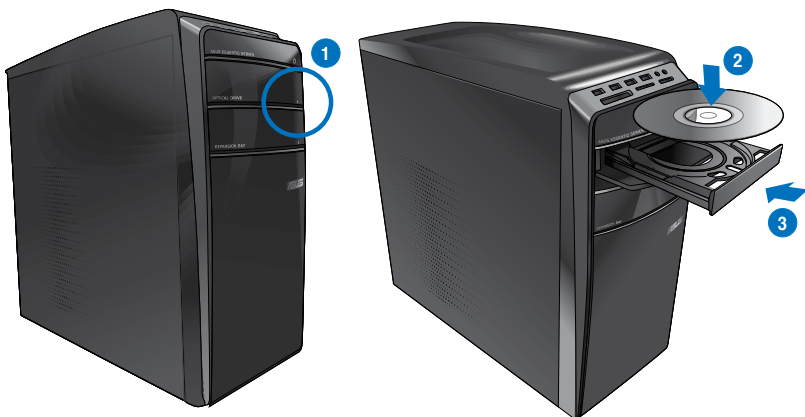


Never remove cards while or immediately after reading, copying, formatting, or deleting data on the card or else data loss may occur.



To prevent data loss, use "Safely Remove Hardware and Eject Media" in the Windows notification area before removing the memory card.

## Using the optical drive



### Inserting an optical disc

#### To insert an optical disc:

1. While your system is on, press the eject button below the drive bay cover to open the tray.
2. Place the disc to the optical drive with the label side facing up.
3. Push the tray to close it.
4. Select a program from the AutoPlay window to access your files.



If AutoPlay is NOT enabled in your computer, click Windows® 7 **Start** button on the taskbar, click **Computer**, and then double-click the CD/DVD drive icon to access the data on it.

### Removing an optical disc

#### To remove an optical disc:

1. While the system is on, do either of the following to eject the tray:
  - Press the eject button below the drive bay cover.
  - Right-click the CD/DVD drive icon on the **Computer** screen, and then click **Eject**.
2. Remove the disc from the disc tray.

# Using the multimedia keyboard (on selected models only)



The keyboard varies with models. The illustrations on this section are for reference only.

## ASUS SK-2045 keyboard











Keys	Description	Keys	Description
1.	Launches Windows® gadgets.	12.	Press <Fn + F7> to launch Microsoft® MSN or, if not installed, connects to the MSN download page.
2.	Activates Windows® Flip 3D.	13.	Press <Fn + F8> to launch Windows® Search screen.
3.	Reduces picture size in Windows® Photo Viewer.	14.	Press <Fn + F9> to play or pause playback in Windows® Media Player.
4.	Increases picture size in Windows® Photo Viewer.	15.	Press <Fn + F10> to stop playback in Windows® Media Player.
5.	Functions with keys F1~F12.	16.	Press <Fn + F11> to go to the previous track in Windows® Media Player.
6.	Press <Fn + F1> to launch Microsoft® Word.	17.	Press <Fn + F12> to go to the next track in Windows® Media Player.
7.	Press <Fn + F2> to launch Microsoft® Excel.	18.	Decreases the system volume.
8.	Press <Fn + F3> to launch Microsoft® PowerPoint.	19.	Increases the system volume.
9.	Press <Fn + F4> to launch Microsoft® Internet Explorer.	20.	Turns the volume's mute mode on/off.
10.	Press <Fn + F5> to launch Microsoft® Outlook.	21.	Launches Windows® Media Player.
11.	Press <Fn + F6> to launch the Favorites folder in Windows® Internet Explorer.	22.	Launches Windows® Media Center.

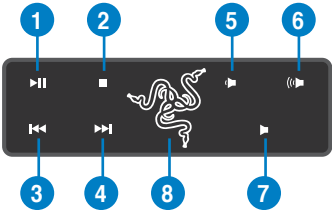


The special function keys only work on Windows® Vista / Windows® 7 operating systems.

ASUS-Razer Arctosa Gaming keyboard



Keys	Description
1. 	Plays or pauses playback in a media player.
2. 	Stops playback in a media player.
3. 	Goes to the previous track in a media player.
4. 	Goes to the next track in a media player.
5. 	Decreases the system volume.
6. 	Increases the system volume.
7. 	Turns the volume's mute mode on/off.
8. 	Switches profiles working with F1 ~ F10 keys.



- The special function keys work on Windows® XP / Vista / 7 operating systems.
- Install the keyboard driver before using. Visit the Razer website at [www.razer-support.com](http://www.razer-support.com) to download the driver.



BTC 6200C keyboard



Keys	Description	Keys	Description
1.	Enters into sleep mode. Press any key to wake up your computer and return to the previous working status.	8.	Increases the system volume.
2.	Returns to the last page you viewed.	9.	Turns the volume's mute mode on/off.
3.	Goes to the next page you viewed before.	10.	Goes to the previous track in a media player.
4.	Launches the default homepage in Windows® Internet Explorer.	11.	Plays or pauses playback in a media player.
5.	Launches the Favorites folder in Windows® Internet Explorer.	12.	Goes to the next track in a media player.
6.	Launches your default email application.	13.	Stops playback in a media player.
7.	Decreases the system volume.		



- The special function keys work on Windows® ME / 2000 / XP / Vista / 7 operating systems without installing a driver. For Windows® 98SE operating system, visit the BTC website at [www.btc.com.tw](http://www.btc.com.tw) to download the driver.
- Install Microsoft® Internet Explorer 5.0 or later versions before using the Internet keys.

# Chapter 5

## Connecting to the Internet

### Wired connection

Use an RJ-45 cable to connect your computer to a DSL/cable modem or a local area network (LAN).

### Connecting via a DSL/cable modem

To connect via a DSL/cable modem:

1. Set up your DSL/cable modem.

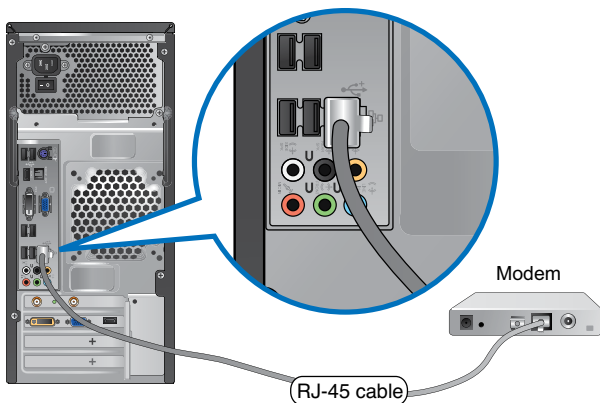


---

Refer to the documentation that came with your DSL/cable modem.

---

2. Connect one end of an RJ-45 cable to the LAN (RJ-45) port on the rear panel of your computer and the other end to a DSL/cable modem.



3. Turn on the DSL/cable modem and your computer.
4. Configure the necessary Internet connection settings.



---

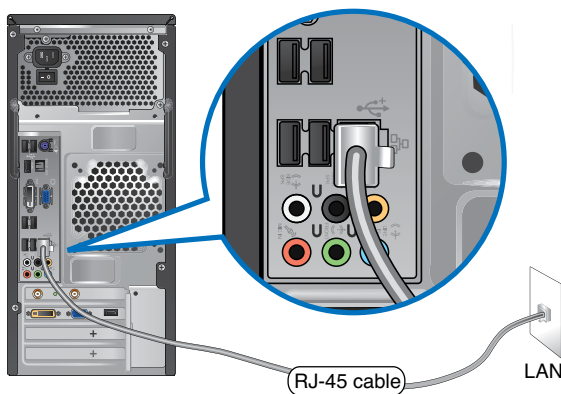
Contact your Internet Service Provider (ISP) for details or assistance in setting up your Internet connection.

---

## Connecting via a local area network (LAN)

### To connect via a LAN:

1. Connect one end of an RJ-45 cable to the LAN (RJ-45) port on the rear panel of your computer and the other end to your LAN.



2. Turn on your computer.
3. Configure the necessary Internet connection settings.



---

Contact your network administrator for details or assistance in setting up your Internet connection.

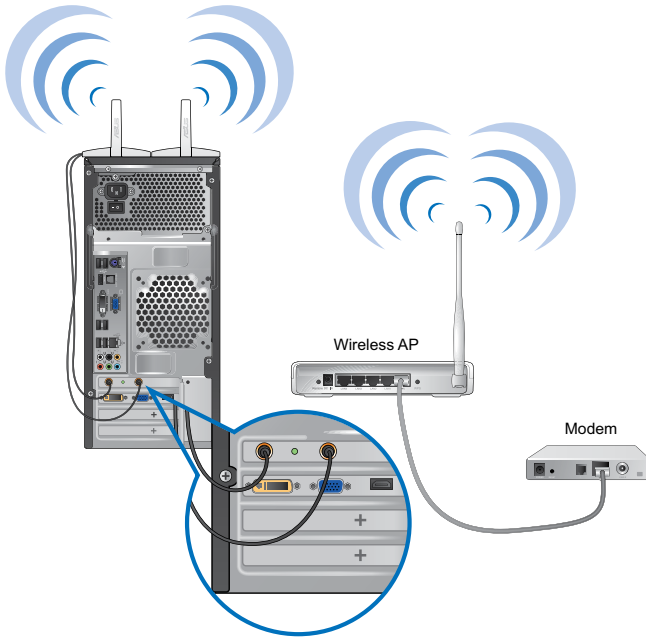
---

## Wireless connection (on selected models only)

Connect your computer to the Internet through a wireless connection.




To establish a wireless connection, you need to connect to a wireless access point (AP).



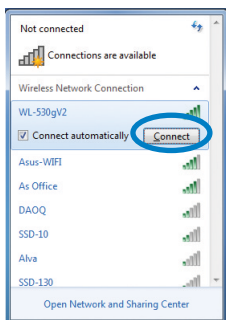
- To increase the range and sensitivity of the wireless radio signal, connect the external antennas to the antenna connectors on the ASUS WLAN Card.
- Place the antennas on the top of your computer for the best wireless performance.
- The external antennas are optional items.

### To connect to a wireless network:

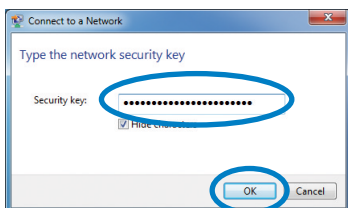
1. Click the network icon  in the notification area to display the available wireless networks.



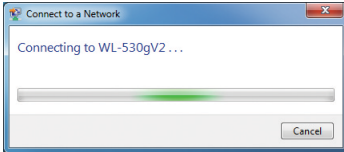
2. Select the wireless network that you want to connect to, then click **Connect**.



3. You may need to key in the network security key for a secured wireless network, then click **OK**.



4. Wait while your computer is connecting to the wireless network.



5. The wireless connection is established successfully. The connection status is displayed and the network icon displays the connected status.



# Chapter 6

## Using the Utilities



The support DVD and Recovery DVD are not included in the package. You can burn it by yourself. Refer to section **Recovering your system** for details.

### ASUS AI Manager

ASUS AI Manager is a utility which gives you quick and easy access to frequently-used applications.

#### Installing AI Manager

##### To install AI Manager:

1. Place the support DVD in the optical drive. If Autorun is enabled, the Drivers installation wizard appears.



If Autorun is disabled, double-click the **setup.exe** file from the ASUS AI Manager folder in the support DVD.

2. Click the **Utilities** tab, then click **ASUS AI Manager**.
3. Follow the onscreen instructions to complete the installation.

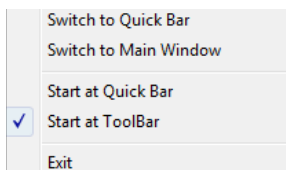
#### Launching AI Manager

To launch the AI Manager from the Windows® desktop, click **Start > All Programs > ASUS > AI Manager > AI Manager 1.xx.xx**. The AI Manager quick bar appears on the desktop.



After launching the application, the AI Manager icon appears in the Windows® taskbar.

Right-click this icon to switch between the quick bar and the main window, and to launch the AI Manager either from the quick bar or taskbar.



## AI Manager quick bar

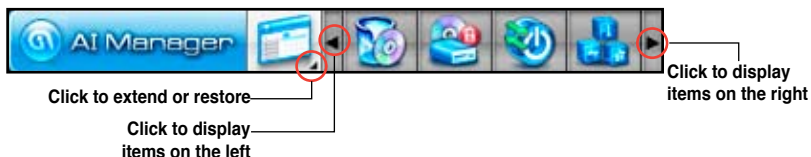
The AI Manager quick bar saves the desktop space and allows you to launch the ASUS utilities or display system information easily. Click any of the Main, My Favorites, Support or Information tab to display the menu's contents.



Click the Maximize/restore button to switch between full window and quick bar. Click the Minimize button to keep the AI Manager on the taskbar. Click the Close button to quit the AI Manager.

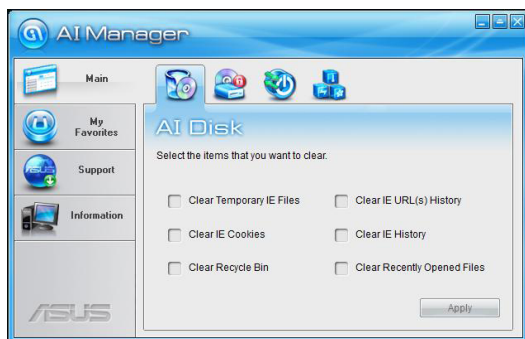
### Main

The Main menu contains five utilities: **AI Disk**, **AI Security**, **AI Boosting**, and **AI Probe**. Click the arrow on the Main menu icon to browse through the utilities in the main menu.



### AI Disk

AI Disk allows you to easily clear temporary IE files, IE cookies, IE URLs, IE history, or the Recycle Bin. Click the AI Disk icon on the quick bar to display the full AI Disk window and select the items you want to clear. Click **Apply** when done.





## **AI Security**

AI Security enables you to set a password to secure your devices, such as USB flash disks and CD/DVD disks, from unauthorized access.

### **To lock a device:**

1. When using AI Security for the first time, you are asked to set a password. Key in a password with at most 20 alphanumeric characters.
2. Confirm the password.
3. Key in the password hint (recommended).
4. When done, click **Ok**.



5. Select the device you want to lock, then click **Apply**.
6. Key in the password you have set previously, then click **Ok**.



### **To unlock the device:**

1. Deselect the locked device, then click **Apply**.
2. Key in the password you have set previously, then click **Ok**.

### **To change the password:**

- Click **Change Password**, then follow the onscreen instructions to change password.

## ***AI Booting***

AI Booting allows you to specify the boot device priority sequence.



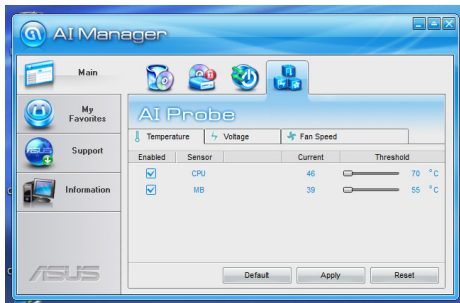
**To specify the boot sequence:**

1. Select a device, then click the left/right button to specify the boot sequence.
2. When done, press **Apply**.

## ***AI Probe***

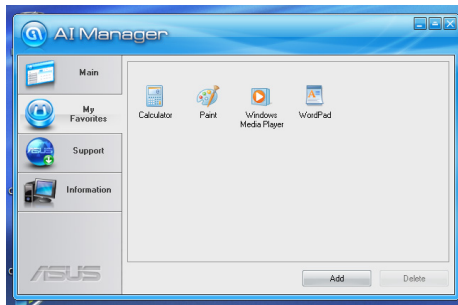
AI Probe automatically detects and displays the motherboard and CPU temperatures, CPU fan speed, and the voltage output. You can adjust the values as you need.

Click the **Temperature**, **Voltage**, or **Fan Speed** tab, then select an item to enable and change the value by dragging the bar.



## My Favorites

**My Favorites** allows you to add applications that you frequently use, saving you from searching for the applications throughout your computer.



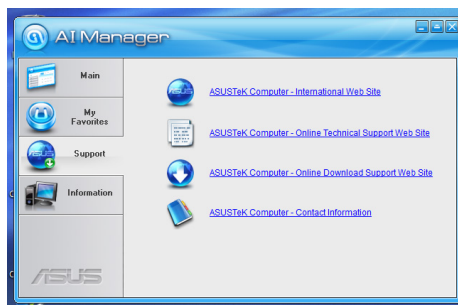
### To add an application:

1. Click **Add**, then locate the application you want to add to **My Favorites**.
2. Click **Open** on the file location window. The application is added to **My Favorites** list.

Right click on the application icon to launch, delete, or rename the selected application. You can also double click to launch the selected application.

## Support

Click any links on the **Support** window to go to the ASUS website, technical support website, download support website, or contact information.



## Information

Click the tab on the **Information** window to see the detailed information about your system, motherboard, CPU, BIOS, installed device(s), and memory.



## ASUS EPU-4 Engine

ASUS EPU-4 Engine is an energy-efficient tool that provides you with a total system power-saving solution. It detects the current computer loading and intelligently adjusts the power in real-time. It automatically adjusts the power usage for the CPU, VGA card, hard drives, and CPU fan. It provides you with these modes to choose from: **Auto**, **High Performance**, and **Maximum Power Saving Mode**.



Refer to the section **ASUS EPU-4 main screen** for more details about these modes.

## Installing ASUS EPU-4

To install **ASUS EPU-4 Engine**:

1. Place the support DVD into the optical drive. The **Drivers** menu appears if Autorun is enabled on your computer.



If Autorun is disabled, double-click the **setup.exe** file from the ASUS EPU-4 Engine folder in the support DVD.

2. Click **ASUS EPU-4 Engine**.
3. Follow the onscreen instructions to complete the installation.

## Launching ASUS EPU-4

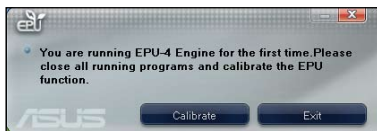
To launch **ASUS EPU-4**:

1. From the Windows taskbar, click the ASUS EPU-4 icon.



2. When you launch ASUS EPU-4 for the first time, a message appears asking you to calibrate the EPU functions.

Click **Calibrate** and wait for a few seconds for the calibration process to complete. The ASUS EPU-4 main menu appears.



Calibration allows the system to detect the CPU properties for optimal power management.

## ASUS EPU-4 main screen



### 1 CPU status

Displays the current CPU power and the total CPU power saved.

### 2 VGA card status

Displays the status of the graphics card. If your graphics card is not compatible with the motherboard, a "No VGA card detected" message appears.



Refer to the ASUS VGA QVL List at [http://event.asus.com/mb/EPU-4\\_Engine/](http://event.asus.com/mb/EPU-4_Engine/) for compatible VGA cards.

- 
- |          |   |
|----------|---|
| <b>3</b> | <b>HDD status</b><br>Lights up when the power saving mode is activated.                                 |
| <b>4</b> | <b>Fan status</b><br>Display the current fan status.  |
| <b>5</b> | <b>CO2 Emission button</b><br>Displays the current or total reduced CO2 emission.                       |
| <b>6</b> | <b>Mode properties</b><br>Displays the properties of each mode.   |
| <b>7</b> | <b>Exit button</b><br>Closes the ASUS EPU-4 utility,  |
| <b>8</b> | <b>Calibrate button</b><br>Allows the system to detect the CPU properties for optimal power management. |
| <b>9</b> | <b>Setting button</b><br>Click this button to configure the mode settings.                              |
- 



---

Refer to the section **Configuring the mode settings** for more details.

---

---

## **10 Modes**



### **Auto Mode**

When you select this mode, the system changes modes automatically according to the current system status.



### **High Performance Mode**

When you select this mode, the system overlocks the components for maximum performance.



### **Maximum Power Saving Mode**

When you select this mode, the system automatically adjusts the power usage for critical components in real-time to save power.



---

## Configuring the mode settings

To configure the mode settings:

1. From the ASUS EPU-4 main menu, click **Setting** to launch the Setting screen.



2. Click the  tab to configure the settings of High Performance mode. Click the  tab to configure the settings of Maximum Power Saving mode.
3. Configure any of these mode settings:
  - **vCore Voltage Downgrade:** Lowers CPU vCore voltage.
    - **Heavy:** Downgrades voltage to the highest level for CPU power saving.
    - **Medium:** Downgrades voltage to the medium level.
    - **Small:** Downgrades voltage to the minimum level.
  - **Turn Off hard disks:** Turns off hard disk drives when they are not accessed after a certain time.
  - **CPU Loadline:** Sets up the CPU loadline to manage CPU power saving.
    - **Light:** Saves CPU power to the minimum level.
    - **Medium:** Saves CPU power to the medium level.
    - **Heavy:** Saves CPU power to the highest level.
  - **Turn Off Screen:** After the specified idle time, the screen turns off while all background tasks are still running.
4. Click **OK** to apply the settings made.

## ASUS Update

The ASUS Update is a utility that allows you to manage, save, and update the motherboard BIOS in Windows® environment.



- ASUS Update requires an Internet connection either through a network or an Internet Service Provider (ISP).
- This utility is available in the support DVD.

## Installing ASUS Update

### To install ASUS Update:

1. Place the support DVD in the optical drive. The **Drivers** menu appears.



If Autorun is disabled, double-click the **setup.exe** file from the ASUS Update folder in the support DVD.

2. Click the **Utilities** tab, then click **Install ASUS Update**.
3. Follow the onscreen instructions to complete the installation.



Quit all Windows® applications before you update the BIOS using this utility.

## Updating the BIOS

### To update the BIOS:

1. From the Windows® desktop, click **Start > Programs > ASUS > ASUS Update > ASUS Update** to launch the ASUS Update utility.
2. From the dropdown list, select any of the updating process:

#### **Updating from the Internet**

- a. Select **Update BIOS from the Internet**, then click **Next**.
- b. Select the ASUS FTP site nearest you to avoid network traffic, or click **Auto Select** then click **Next**.
- c. From the FTP site, select the BIOS version that you wish to download then click **Next**.



The ASUS Update utility is capable of updating itself through the Internet. Always update the utility to avail all its features.

#### **Updating from a BIOS file**

- a. Select **Update BIOS from a file**, then click **Next**.
  - b. Locate the BIOS file from the **Open** window, then click **Open**.
3. Follow the onscreen instructions to complete the updating process.



## ASUS MyLogo2™

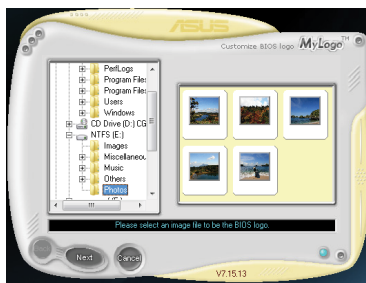
The ASUS MyLogo2™ utility lets you customize the boot logo. The boot logo is the image that appears on screen during the Power-On Self-Tests (POST). ASUS MyLogo2™ is automatically installed when you install the ASUS Update utility from the Support DVD.



- Obtain the latest BIOS file from the ASUS website at [www.asus.com](http://www.asus.com).
- You can create your own boot logo image in GIF file format.

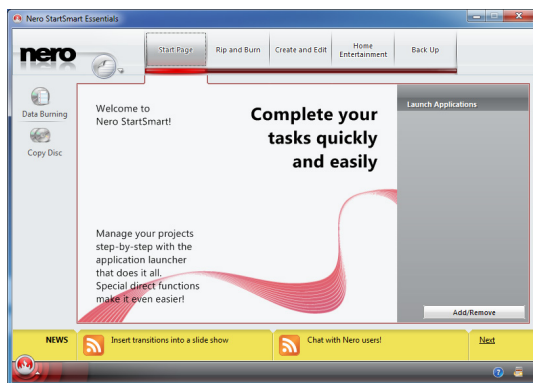
### To launch ASUS MyLogo2™:

1. Launch the ASUS Update utility. Refer to the section “**ASUS Update**” in this user manual for details.
2. Select **Options** from the drop down menu, then click **Next**.
3. Check the option **Launch MyLogo to replace system boot logo before flashing BIOS**, then click **Next**.
4. Select **Update BIOS from file** from the drop down menu, then click **Next**.
5. When prompted, locate the new BIOS file, then click **Next**. ASUS MyLogo window appears.
6. From the left window pane, locate the image that you want to use as your boot logo. Click **Next**.
7. From the **Ratio** dropdown list, select your desired size for the boot logo. Click **Next**.
8. The system starts updating the BIOS and loading the new boot logo.
9. After the updating process, the system restarts and displays the new boot logo during POST.



## Nero 9

Nero 9 allows you to create, copy, burn, edit, share, and update different kinds of data.



## Installing Nero 9

To install Nero 9:

1. Insert the Nero 9 DVD into your optical drive.
2. If Autorun is enabled, the main menu appears automatically.

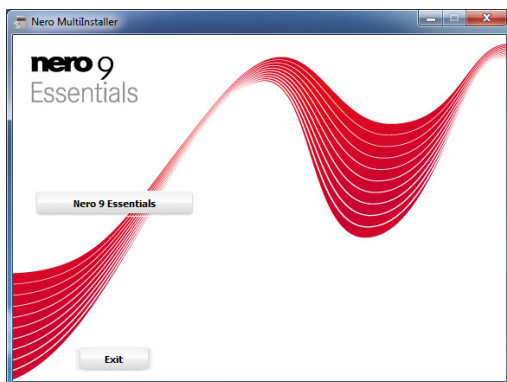


---

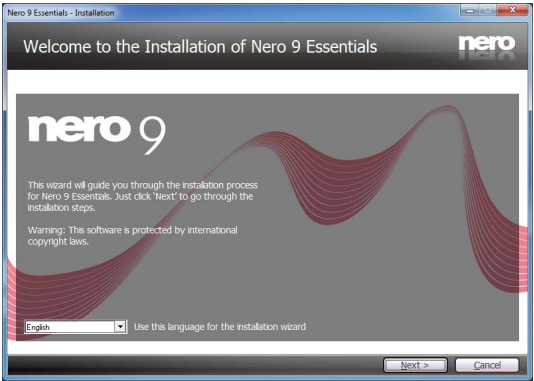
If Autorun is disabled, double-click the **SeupX.exe** file from the main directory of your Nero 9 DVD.

---

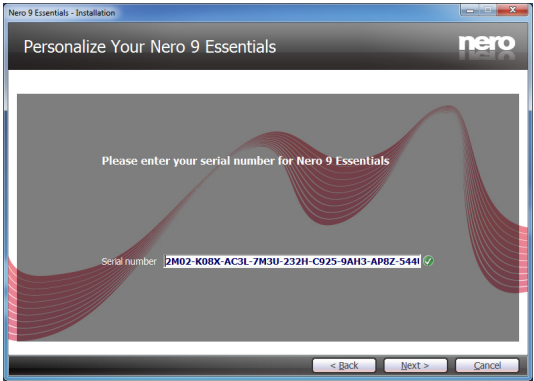
3. From the main menu, click **Nero 9 Essentials**.



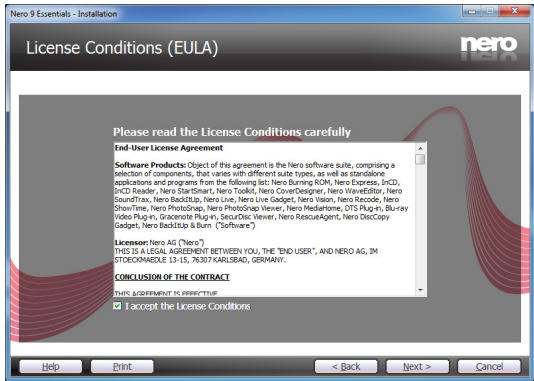
4. Select the language you want to use for Installation Wizard. Click **Next**.



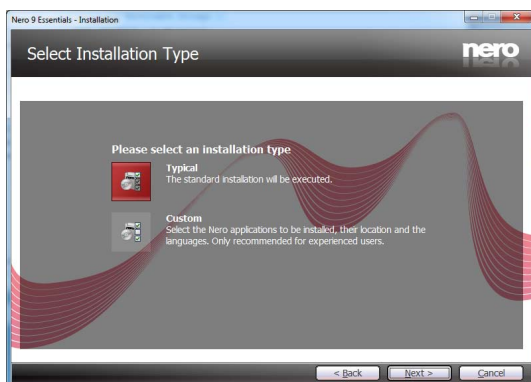
5. Click **Next** to continue.



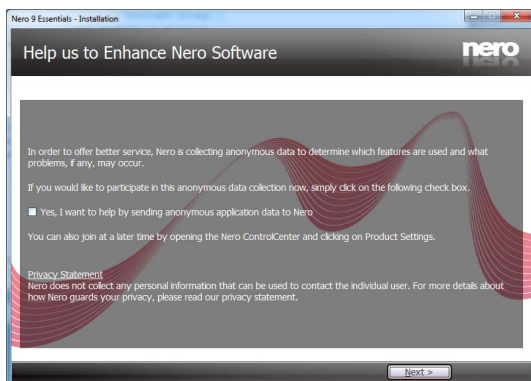
6. Tick **I accept the License Conditions**. When done, click **Next**.



7. Select **Typical** then click **Next**.



8. Tick **Yes, I want to help by sending anonymous application data to Nero** then click **Next**.



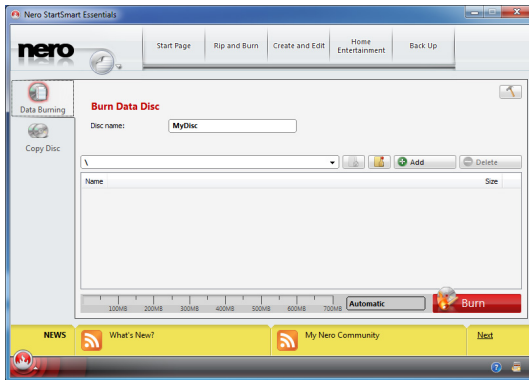
9. When done, click **Exit**.



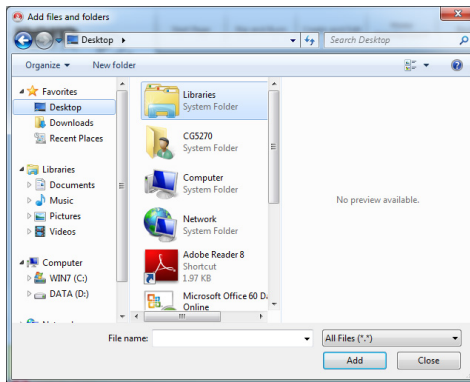
## Burning files

### To burn files:

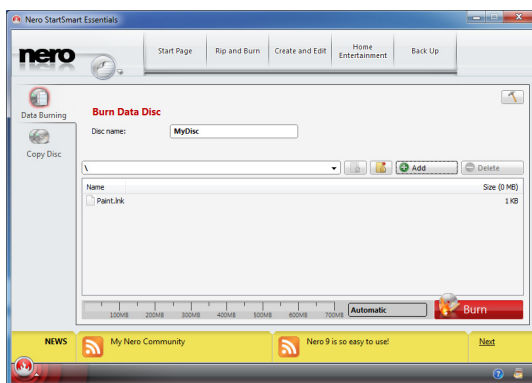
1. From the main menu, click **Data Burning > Add**.



2. Select the files that you want to burn. When done, click **Add**.



3. After selecting files that you want to burn, click **Burn** to burn the files to a disc.



For more details about using Nero 9, refer to the Nero website at [www.nero.com](http://www.nero.com)

## Recovering your system

### Using the Recovery Partition

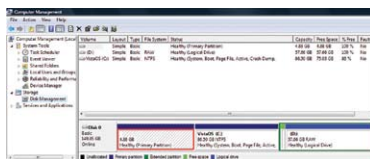
The Recovery Partition quickly restores your Desktop PC's software to its original working state. Before using the Recovery Partition, copy your data files (such as Outlook PST files) to USB storage devices or to a network drive and make note of any customized configuration settings (such as network settings).

#### About the Recovery Partition

The Recovery Partition is a reserved space on your hard disk drive used to restore the operating system, drivers, and utilities installed on your Desktop PC at the factory.



DO NOT delete the partition named **RECOVERY**. The Recovery Partition is created at the factory and cannot be restored if deleted. Take your Desktop PC to an authorized ASUS service center if you have problems with the recovery process.



#### Using the Recovery Partition:

1. Press **<F9>** during bootup.
2. Press **<Enter>** to select Windows Setup [EMS Enabled].

3. Select one of the following recovery options.

**System Recovery:**

This feature allows you to restore the system to the factory default settings.

**System Image Backup:**

This feature allows you to burn the system image backup in DVD discs, which you can use later to restore the system to its default settings.

**System DVD Backup:**

This feature allows you to make a backup copy of the support DVD.

4. Follow the onscreen instructions to complete the recovery process.



---

Visit the ASUS website at [www.asus.com](http://www.asus.com) for updated drivers and utilities.

---

## Using the Recovery DVD (on selected models)



---

Prepare 1~3 blank writable DVDs as instructed to create the Recovery DVD.

---



---

Remove the external hard disk drive before performing system recovery on your Desktop PC. According to Microsoft, you may lose important data because of setting up Windows on the wrong disk drive or formatting the incorrect drive partition.

---

### To use the Recovery DVD:

1. Insert the Recovery DVD into the optical drive. Your Desktop PC needs to be powered ON.
2. Restart the Desktop PC and press <F8> on bootup and select the optical drive (may be labeled as "CD/DVD") and press <Enter> to boot from the Recovery DVD.
3. Select OK to start to restore the image.
4. Select OK to confirm the system recovery.



---

Restoring will overwrite your hard drive. Ensure to back up all your important data before the system recovery.

---

5. Follow the onscreen instructions to complete the recovery process.



---

DO NOT remove the Recovery disc, unless instructed to do so, during the recovery process or else your partitions will be unusable.

---



---

Visit the ASUS website at [www.asus.com](http://www.asus.com) for updated drivers and utilities.

---

# Chapter 7

## Troubleshooting

This chapter presents some problems you might encounter and the possible solutions.

### ? *My computer cannot be powered on and the power LED on the front panel does not light up*

- Check if your computer is properly connected.
- Check if the wall outlet is functioning.
- Check if the Power Supply Unit is switched on. Refer to the section **Turning your computer ON/OFF** in Chapter 1.

### ? *My computer hangs.*

- Do the following to close the programs that are not responding:
  1. Simultaneously press <Alt> + <Ctrl> + <Delete> keys on the keyboard, then click **Start Task Manager**.
  2. Click **Applications** tab.
  3. Select the program that is not responding, then click **End Task**.
- If the keyboard is not responding. Press and hold the Power button on the top of your chassis until the computer shuts down. Then press the Power button to turn it on.

### ? *I cannot connect to a wireless network using the ASUS WLAN Card (on selected models only)?*

- Ensure that you enter the correct network security key for the wireless network you want to connect to.
- Connect the external antennas (optional) to the antenna connectors on the ASUS WLAN Card and place the antennas on the top of your computer chassis for the best wireless performance.

### ? *The arrow keys on the number key pad are not working.*

Check if the Number Lock LED is off. When the Number Lock LED is on, the keys on the number key pad are used to input numbers only. Press the Number Lock key to turn the LED off if you want to use the arrow keys on the number key pad.



### ? *No display on the monitor.*

- Check if the monitor is powered on.
- Ensure that your monitor is properly connected to the video output port on your computer.
- If your computer comes with a discrete graphics card, ensure that you connect your monitor to a video output port on the discrete graphics card.
- Check if any of the pins on the monitor video connector is bent. If you discover bent pins, replace the monitor video connector cable.
- Check if your monitor is plugged to a power source properly.
- Refer to the documentation that came with your monitor for more troubleshooting information.

### ? *When using multiple monitors, only one monitor has display.*

- Ensure that the both monitors are powered on.
- During POST, only the monitor connected to the VGA port has display. The dual display function works only under Windows.
- When a graphics card is installed on your computer, ensure that you connect the monitors to the output port on the graphics card.
- Check if the multiple displays settings are correct. Refer to section **Connecting multiple external displays** in Chapter 3 for details.


### ? *My computer cannot detect my USB storage device.*

- The first time you connect your USB storage device to your computer, Windows automatically installs a driver for it. Wait for a while and go to My Computer to check if the USB storage device is detected.
- Connect your USB storage device to another computer to test if the USB storage device is broken or malfunctions.





### ? *I want to restore or undo changes to my computer's system settings without affecting my personal files or data.*

The Windows® System Restore feature allows you to restore or undo changes to your computer's system settings without affecting your personal data such as documents or photos. For more details, refer to the section **Restoring your system** in Chapter 2.

### ? *The picture on the HDTV is stretched.*

- It is caused by the different resolutions of your monitor and your HDTV. Adjust the screen resolution to fit your HDTV. To change the screen resolution:
  1. Do any of the following to open the **Screen Resolution** setting screen:
    - Click  > **Control Panel > Appearance and Personalization > Display > Change display settings.**
    - Right click anywhere on your Windows desktop. When the pop-up menu appears, click **Personalize > Display > Change display settings.**
  2. Adjust the resolution. Refer to the documentation came with your HDTV for the resolution.
  3. Click **Apply** or **OK**. Then click **Keep Changes** on the confirmation message.



### ? *My speakers produce no sound.*

- Ensure that you connect your speakers to the Line out port (lime) on the front panel or the rear panel.
- Check if your speak is connected to a electrical source and turned on.
- Adjust your speakers' volume.
- Ensure that your computer's system sounds are not Muted.
  - If it is muted, the volume icon is displayed as . To enable the system sounds, click  from the Windows notification area, then click .
  - If it is not muted, click  and drag the slider to adjust the volume.
- Connect your speakers to another computer to test if the speakers arer working properly.

### ? *The DVD drive cannot read a disc.*

- Check if the disc is placed with the label side facing up.
- Check if the disc is centered in the tray, especially for the discs with non-standard size or shape.
- Check if the disc is scratched or damaged.

**?** *The DVD drive eject button is not respond.*

1. Click  > **Computer**.
2. Right-click , then click **Eject** from the menu.