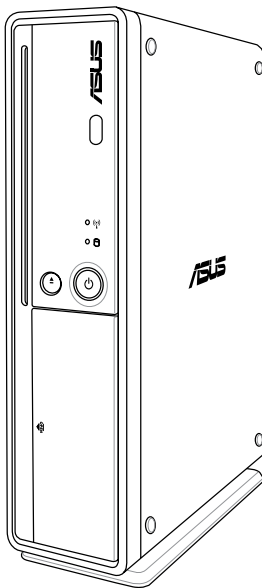




Essentio ES5000/ES5000-P

ASUS Desktop PC

User Manual



E3812

First Edition V1

July 2008

Copyright © 2008 ASUSTeK COMPUTER INC. All Rights Reserved.

No part of this manual, including the products and software described in it, may be reproduced, transmitted, transcribed, stored in a retrieval system, or translated into any language in any form or by any means, except documentation kept by the purchaser for backup purposes, without the express written permission of ASUSTeK COMPUTER INC. ("ASUS").

Product warranty or service will not be extended if: (1) the product is repaired, modified or altered, unless such repair, modification or alteration is authorized in writing by ASUS; or (2) the serial number of the product is defaced or missing.

ASUS PROVIDES THIS MANUAL "AS IS" WITHOUT WARRANTY OF ANY KIND, EITHER EXPRESS OR IMPLIED, INCLUDING BUT NOT LIMITED TO THE IMPLIED WARRANTIES OR CONDITIONS OF MERCHANTABILITY OR FITNESS FOR A PARTICULAR PURPOSE. IN NO EVENT SHALL ASUS, ITS DIRECTORS, OFFICERS, EMPLOYEES OR AGENTS BE LIABLE FOR ANY INDIRECT, SPECIAL, INCIDENTAL, OR CONSEQUENTIAL DAMAGES (INCLUDING DAMAGES FOR LOSS OF PROFITS, LOSS OF BUSINESS, LOSS OF USE OR DATA, INTERRUPTION OF BUSINESS AND THE LIKE), EVEN IF ASUS HAS BEEN ADVISED OF THE POSSIBILITY OF SUCH DAMAGES ARISING FROM ANY DEFECT OR ERROR IN THIS MANUAL OR PRODUCT.

SPECIFICATIONS AND INFORMATION CONTAINED IN THIS MANUAL ARE FURNISHED FOR INFORMATIONAL USE ONLY, AND ARE SUBJECT TO CHANGE AT ANY TIME WITHOUT NOTICE, AND SHOULD NOT BE CONSTRUED AS A COMMITMENT BY ASUS. ASUS ASSUMES NO RESPONSIBILITY OR LIABILITY FOR ANY ERRORS OR INACCURACIES THAT MAY APPEAR IN THIS MANUAL, INCLUDING THE PRODUCTS AND SOFTWARE DESCRIBED IN IT.

Products and corporate names appearing in this manual may or may not be registered trademarks or copyrights of their respective companies, and are used only for identification or explanation and to the owners' benefit, without intent to infringe.

ASUS contact information

ASUSTeK COMPUTER INC.

Address	15 Li-Te Road, Peitou, Taipei, Taiwan 11259
Telephone	+886-2-2894-3447
Fax	+886-2-2890-7798
E-mail	info@asus.com.tw
Web site	www.asus.com.tw

Technical Support

Telephone	+86-21-38429911
Online support	support.asus.com

ASUS COMPUTER INTERNATIONAL (America)

Address	44370 Nobel Drive, Fremont, CA 94538, USA
Fax	+1-510-608-4555
Web site	usa.asus.com

Technical Support

Telephone	+1-812-282-2787
Support fax	+1-812-284-0883
Online support	support.asus.com

ASUS COMPUTER GmbH (Germany and Austria)

Address	Harkortstr. 21-23, 40880 Ratingen, Germany
Telephone	+49-01805-010923
Fax	+49-02102-9599-11
Web site	www.asus.de
Online contact	www.asus.de/sales

Technical Support

Telephone	+49-01805-010923
Support Fax	+49-02102-9599-11
Online support	support.asus.com

Contents

Notices.....	v
Safety information	vi
General precautions	vii
About this guide	viii
System package contents.....	x

Chapter 1: System introduction

1.1	Front panel.....	1-1
1.2	Rear panel.....	1-2
1.3	Placement options	1-4
	1.3.1 Horizontal placement	1-4
	1.3.2 Vertical placement.....	1-4
1.4	Connecting to the keyboard and the mouse	1-5
1.5	Connecting to other peripheral devices	1-5

Chapter 2: Getting started

2.1	Installing an operating system	2-1
2.2	Powering your system.....	2-1
2.3	Support DVD information	2-2
	2.3.1 Running the Support DVD	2-2
	2.3.2 Drivers menu.....	2-3
	2.3.3 Utilities menu	2-4
	2.3.4 Manuals menu	2-5
	2.3.5 ASUS contact information.....	2-5
	2.3.6 Other information	2-6
2.4	ASUS AI Manager.....	2-8
	2.4.1 Installing AI Manager	2-8
	2.4.2 Launching AI Manager	2-8
	2.4.3 AI Manager Quick Bar.....	2-8
	2.4.4 Main	2-9
	2.4.5 My favorites.....	2-12
	2.4.6 Support	2-13
	2.4.7 Information.....	2-13
2.5	Loading the initial OS default settings.....	2-14
2.6	Recovery CD (optional)	2-14
	2.6.1 Recovering a Windows® XP OS.....	2-14
	2.6.2 Recovering a Windows® Vista OS.....	2-15

Notices

Federal Communications Commission Statement

This device complies with Part 15 of the FCC Rules. Operation is subject to the following two conditions:

- This device may not cause harmful interference, and
- This device must accept any interference received including interference that may cause undesired operation.

This equipment has been tested and found to comply with the limits for a Class B digital device, pursuant to Part 15 of the FCC Rules. These limits are designed to provide reasonable protection against harmful interference in a residential installation. This equipment generates, uses and can radiate radio frequency energy and, if not installed and used in accordance with manufacturer's instructions, may cause harmful interference to radio communications. However, there is no guarantee that interference will not occur in a particular installation. If this equipment does cause harmful interference to radio or television reception, which can be determined by turning the equipment off and on, the user is encouraged to try to correct the interference by one or more of the following measures:

- Reorient or relocate the receiving antenna.
- Increase the separation between the equipment and receiver.
- Connect the equipment to an outlet on a circuit different from that to which the receiver is connected.
- Consult the dealer or an experienced radio/TV technician for help.



The use of shielded cables for connection of the monitor to the graphics card is required to assure compliance with FCC regulations. Changes or modifications to this unit not expressly approved by the party responsible for compliance could void the user's authority to operate this equipment.

Canadian Department of Communications Statement

This digital apparatus does not exceed the Class B limits for radio noise emissions from digital apparatus set out in the Radio Interference Regulations of the Canadian Department of Communications.

This class B digital apparatus complies with Canadian ICES-003.

Safety information

Electrical safety

- To prevent electrical shock hazard, disconnect the power cable from the electrical outlet before relocating the system.
- When adding or removing any devices to or from the system, contact a qualified service technician or your retailer for help. Ensure that all the power cables are disconnected before any device is added or removed to or from the system.
- If the power supply is broken, do not try to fix it by yourself. Contact a qualified service technician or your retailer.

Operation safety

- Before installing devices into the system, carefully read all the documentation that came with the package.
- Before using the product, ensure that all cables are correctly connected and the power cables are not damaged. If you detect any damage, contact your dealer immediately.
- To avoid short circuits, keep paper clips, screws, and staples away from connectors, slots, sockets, and circuitry.
- Avoid dust, humidity, and extreme temperatures. Do not place the product in any area where it may become wet. Place the product on a stable surface.
- When using the product, do not block any air inlet/outlet in the chassis.
- The maximum environmental temperature is 35°C.
- If you encounter technical problems with the product, contact a qualified service technician or your retailer.

Lithium-Ion Battery Warning

CAUTION: Danger of explosion if battery is incorrectly replaced. Replace only with the same or equivalent type recommended by the manufacturer. Dispose of used batteries according to the manufacturer's instructions.

VORSICHT: Explosionsgefahr bei unsachgemäßen Austausch der Batterie. Ersatz nur durch denselben oder einem vom Hersteller empfohlenem ähnlichen Typ. Entsorgung gebrauchter Batterien nach Angaben des Herstellers.

LASER PRODUCT WARNING

CLASS 1 LASER PRODUCT

General precautions

Before using the ASUS Essentio ES5000/ES5000-P Desktop PC, carefully read the general precautions below. Improper operation could lead to personal injury or damage to the product.

- Before using the product, ensure that all components are correctly installed and all cables are correctly connected. If you detect any damage, contact your dealer immediately.
- Avoid dust and extreme temperatures. Do not place the product in any area where it may receive direct sunlight.
- Keep the product in a dry place. Raindrops, moisture, and liquids may contain minerals and damage the circuitry.
- Leave enough space around the product to provide adequate ventilation. Otherwise, it may overheat.
- Before turning on the system, check if all the peripherals are correctly connected.
- Avoid eating while using the computer. It may contaminate the components and cause the system to malfunction.
- To avoid short circuits, keep scraps, screws, and threads away from connectors, slots, sockets, and circuitry.
- Do not stuff anything into the components. Otherwise, it may cause a short circuit or damage the circuitry.
- If the computer has been used for a long time, avoid direct contact with the heatsinks and the surfaces of IC as they may become very warm and hot. Check if the system receives adequate ventilation.
- Before you add or remove a peripheral device to or from the system, ensure that you unplugged the power cables.
- If the power supply is broken, do not try to fix it by yourself. Contact a qualified service technician or your retailer.
- Though the system casing is elaborately designed to protect users from scratches, be careful with those sharp tips and edges. Put on a pair of gloves before you remove or replace the system cover.
- When you do not need to use your computer for a long time, shut it down and unplug the power cables.
- It is suggested that you use this product when the temperature is no higher than 35°C.
- Warning: Ensure that you replace the battery with a correct type otherwise it may cause an explosion hazard.

About this guide

Audience

This guide provides general information about ASUS Essentio ES5000/ES5000-P Desktop PC and instructions on how to use the Support DVD that comes with the system package. This guide is intended for experienced users and integrators with hardware knowledge of personal computers.

How this guide is organized

This guide contains the following parts:

1. Chapter 1: System introduction

This chapter gives a general description of ASUS Essentio ES5000/ES5000-P Desktop PC. The chapter lists the system features, including introduction on the front and rear panels.

2. Chapter 2: Getting started

This chapter helps you power up the system and install drivers and utilities from the support DVD.

Conventions used in this guide

To ensure that you perform certain tasks properly, take note of the following symbols used throughout this guide.



WARNING: Information to prevent injury to yourself when trying to complete a task.



CAUTION: Information to prevent damage to the components when trying to complete a task.



IMPORTANT: Instructions that you **MUST** follow to complete a task.



NOTE: Tips and additional information to aid in completing a task.

Where to find more information

Refer to the following sources for additional information and for product and software updates.

1. **ASUS Websites**

The ASUS websites worldwide provide updated information on ASUS hardware and software products. Refer to the ASUS contact information.

2. **Optional Documentation**

Your product package may include optional documentation, such as warranty flyers, that may have been added by your dealer. These documents are not part of the standard package.

System package contents

Check your Essentio ES5000/ES5000-P system package for the following items.

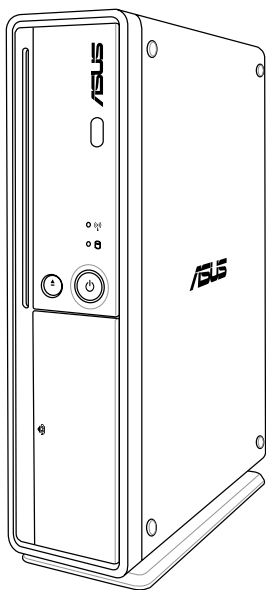
Standard items	
1.	ASUS Essentio ES5000/ES5000-P Desktop PC with
	<ul style="list-style-type: none">ASUS Desktop PC x 1Foot stand x 1Mouse x 1Keyboard x 1
2.	Cables
	<ul style="list-style-type: none">AC power cord x 1
3.	Accessories
	<ul style="list-style-type: none">AC power adapter x 1Mouse pad x 1
4.	Support DVD x 1
5.	User Manual x 1
6.	Warranty card x 1



- If any of the items is damaged or missing, contact your retailer immediately.
- Specifications are subject to the desktop PC you purchased. Check with your supplier for exact offers.

Chapter 1

This chapter gives a general description of the desktop PC. The chapter lists the system features including introduction on the front and rear panels.



System introduction

Chapter summary

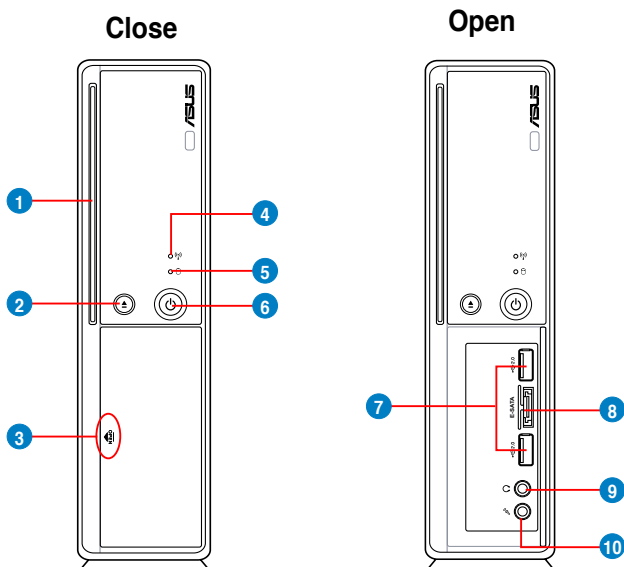
1







1.1	Front panel.....	1-1
1.2	Rear panel.....	1-2
1.3	Placement options	1-4
1.4	Connecting to the keyboard and the mouse	1-5
1.5	Connecting to other peripheral devices	1-5



1.1 Front panel

The ASUS Essentio ES5000/ES5000-P Desktop PC includes an ASUS motherboard, a power supply unit, a front panel, and a rear panel. All of these components are integrated in a system casing elaborately designed by ASUS.

The illustrations below show the front panel and the components on it.



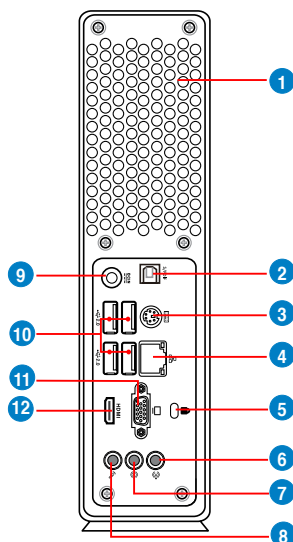
1. **Slot-in optical disk drive (ODD).** Insert an optical disk into the slot with the label side facing your left.
2. **Optical disk eject button** . Press this button to eject an optical disk.
3. **Front panel cover** . Pull outward to open the front panel cover. Inside are two USB 2.0 ports, one E-SATA port, one Microphone port, and one Headphone port.
4. **Network LED** . This LED lights up when a wireless/wired network connection is established on the system.
5. **Hard disk drive (HDD) LED** . This LED lights up when data is being read from or written to the hard disk drive.
6. **Power button** . Press this button to turn the system on.
7. **USB 2.0 ports** . These Universal Serial Bus 2.0 (USB 2.0) ports are available for connecting USB 2.0 devices such as a mouse, printer, scanner, camera, PDA, and others.
8. **E-SATA port E-SATA**. This port connects an external Serial ATA hard disk drive.

9. **Headphone port (lime)** . This port connects a headphone.
10. **Microphone port (pink)** . This port connects a microphone.

1.2 Rear panel

The system rear panel includes the power input port and several I/O ports that allow convenient connection of devices.


The illustration below shows the rear panel and the components on it.



1. **Air vents.** These vents allow air ventilation.

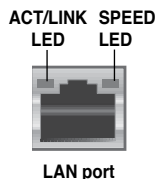


DO NOT block the air vents on the top and rear panels of the system chassis. The components inside the chassis may overheat and be damaged without adequate ventilation.

2. **Optical S/PDIF Out port.** This port connects an external audio output device via an optical S/PDIF cable.
3. **PS/2 keyboard port** . This port is for a PS/2 keyboard.
4. **LAN (RJ-45) port.** This port allows Fast Ethernet connection to a Local Area Network (LAN) through a network hub.

LAN port LED indications

Activity/Link LED		Speed LED	
Status	Description	Status	Description
OFF	No link	OFF	10 Mbps connection
ORANGE	Linked	ORANGE	100 Mbps connection
BLINKING	Data activity	GREEN	1 Gbps connection



- Kensington® lock port** . This port allows the PC to be secured to a fixed object using Kensington® compatible security products.
- Line In port (light blue)**. This port connects a tape, CD, DVD player, or other audio sources.
- Line Out port (lime)**. This port connects a headphone or a speaker. In 4-channel or 6-channel configuration, the function of this port becomes Front Speaker Out.
- Microphone port (pink)** . This port connects a microphone.



Refer to the audio configuration table below for the function of the audio ports in 2, 4, or 6-channel configuration.

Audio 2, 4, or 6-channel configuration

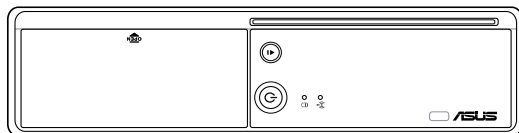
Port	Headset 2-channel	4-channel	6-channel
Light Blue	Line In	Rear Speaker Out	Rear Speaker Out
Lime	Line Out	Front Speaker Out	Front Speaker Out
Pink	Mic In	Mic In	Bass/Center

- DC IN input port**. This port connects the DC output plug of an AC power adapter.
- USB 2.0 ports** . These Universal Serial Bus 2.0 (USB 2.0) ports are available for connecting USB 2.0 devices such as a mouse, printer, scanner, camera, PDA, and others.
- Video Graphics adapter (VGA) port** . This port connects a VGA monitor or other VGA-compatible devices.
- HDMI port** . This port is for a High-Definition Multimedia Interface (HDMI) connector, and is HDCP compliant allowing playback of HD DVD, Blu-Ray and other protected content.

1.3 Placement options

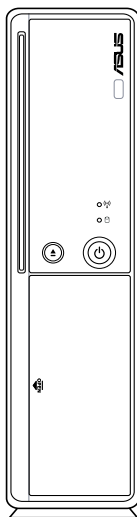
1.3.1 Horizontal placement

Place your desktop PC horizontally.



1.3.2 Vertical placement

Install the foot stand supplied in the system package. Place your desktop PC vertically.



To install the foot stand:

1. Locate the screw hole on the bottom of your desktop PC.
2. Secure the foot stand to your desktop PC with the supplied screw.

1.4 Connecting to the keyboard and the mouse

The ASUS Essentio ES5000/ES5000-P Desktop PC is equipped with a PS/2 keyboard and a USB mouse. Connect the PS/2 keyboard to the PS/2 keyboard port at the rear panel. Connect the USB mouse to a USB port either at the rear or front panel.

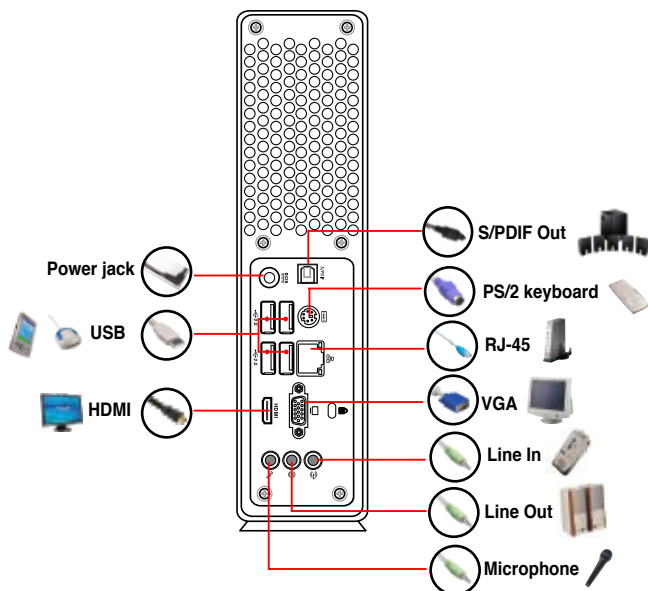


If you are using a wireless USB keyboard or mouse, refer to the documentation that comes with the device or contact your supplier directly for information on how to configure it.

1.5 Connecting to other peripheral devices

The ASUS Essentio ES5000/ES5000-P Desktop PC is equipped with a number of I/O ports at the rear and front panels where you can connect peripheral devices to the system.

Refer to the illustration below for details.

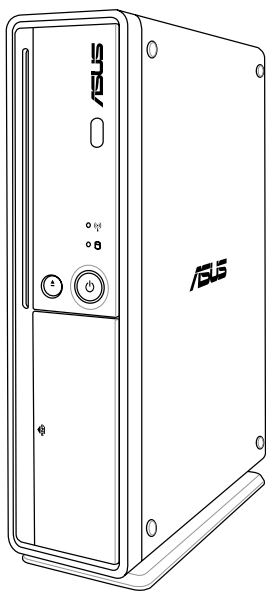


Before you connect a peripheral device to the system, refer to the documentation that comes with the device or contact your supplier directly for information on how to install it.

This image shows a single sheet of white paper with horizontal ruling lines. The lines are evenly spaced and run across the width of the page. There are no margins, text, or other markings on the paper.

Chapter 2

This chapter helps you to power up the system and install drivers and utilities from the support DVD.



Getting started

Chapter summary

2

2.1	Installing an operating system	3-1
2.2	Powering your system.....	3-1
2.3	Support DVD information	3-2
2.4	ASUS AI Manager	3-8
2.5	Loading the initial OS default settings.....	3-14
2.6	Recovery CD (optional)	3-14

2.1 Installing an operating system

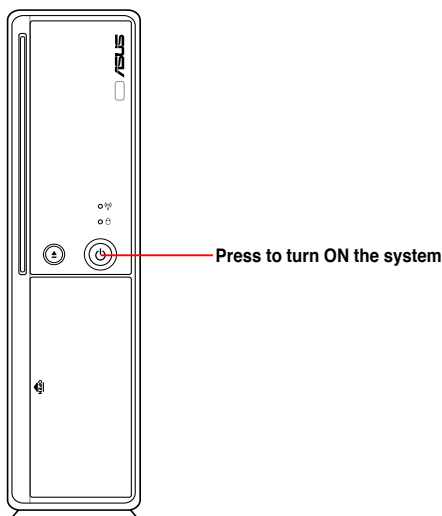
This motherboard supports Windows® XP / Vista operating systems (OS). Always install the latest OS version and the corresponding updates to maximize the features of your hardware. When you start the system for the first time, the system automatically detects the built-in audio and graphics chips and attempts to install the drivers that come with the OS. Select **NO** when a window appears asking if you want to restart the system. Install drivers according to the instructions in the following sections.



- To ensure that the OS works properly, install the drivers bundled in the Support DVD.
- Motherboard settings and hardware options vary. Use the setup procedures presented in this chapter for reference only. Refer to your OS documentation for detailed information.

2.2 Powering your system

Press the Power button  to power up the system.



2.3 Support DVD information

The Support DVD that comes with the system package contains the drivers, software applications, and utilities that you can install to avail all system features.



The contents of the Support DVD are subject to change at any time without notice. Visit the ASUS website at www.asus.com for updates.

2.3.1 Running the Support DVD

Place the Support DVD into the optical drive. The DVD automatically displays the **Drivers** menu if Autorun is enabled on your computer.



Click an icon to display Support DVD/ motherboard information

Click an item to install



If Autorun is NOT enabled on your computer, browse the contents of the Support DVD to locate the file ASSETUP.EXE from the BIN folder. Double-click the ASSETUP.EXE to run the DVD.

2.3.2 Drivers menu

The **Drivers** menu shows the available device drivers if the system detects installed devices. Install the necessary drivers to activate the devices.



ASUS InstAll - Drivers Installation Wizard

Installs the ASUS InstAll-Drivers Installation Wizard.

Intel(R) Chipset Inf Update Program

Installs the Intel® chipset Inf update program.

Realtek Audio Driver

Installs the Realtek® audio driver and application.

ATI Display Driver

Installs the ATI display driver.

JMicron JMB36X Controller Driver

Installs the JMicron JMB36X controller driver.

ITE CIR Driver

Installs the ITE CIR driver.

Realtek RTL8111C LAN Driver

Installs the Realtek RTL8111C LAN driver.

ASUS Wireless LAN Driver

Installs the ASUS wireless LAN driver.

2.3.3 Utilities menu

The **Utilities** menu shows the applications and other software that the motherboard supports. Tap an item from the screen to install.



ASUS InstAll - Installation Wizard for Utilities

Installs all of the utilities through the Installation Wizard.

ASUS Update

Allows you to download the latest version of BIOS from the ASUS website.



Before using the ASUS Update, ensure that you have an Internet connection so that you can connect to the ASUS website.

ASUS AI Manager

Installs the ASUS AI Manager where you can launch AI Disk, AI Security, and AI Probe easily.

Adobe Acrobat Reader 8

Installs the Adobe Acrobat Reader 8. The manuals in the Support DVD are in PDF (Portable Document Format) format, which can be opened with Adobe Acrobat Reader.

2.3.4 Manuals menu

The Support DVD includes the manual of Realtek HD Audio.

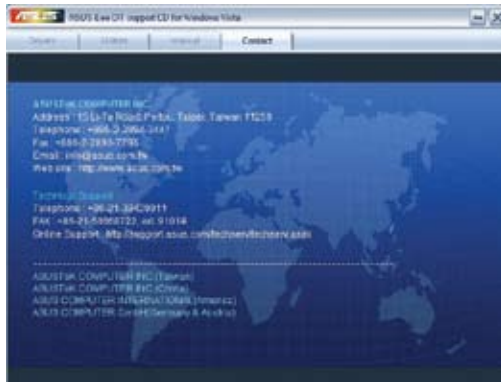


The manual is in PDF format. To open it, install the Adobe Acrobat Reader from the **Utilities** menu.



2.3.5 ASUS contact information

Click the **Contact** tab to display the ASUS contact information.

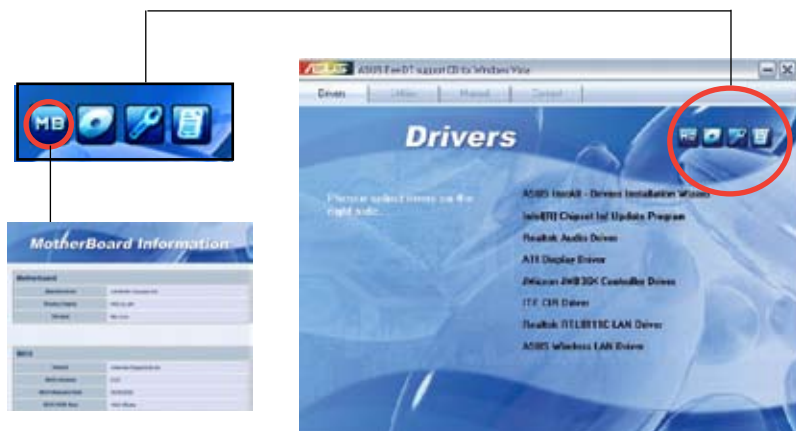


2.3.6 Other information

The icons on the top right corner of the screen give additional information on the motherboard and the contents of the Support DVD. Click an icon to display the specified information.

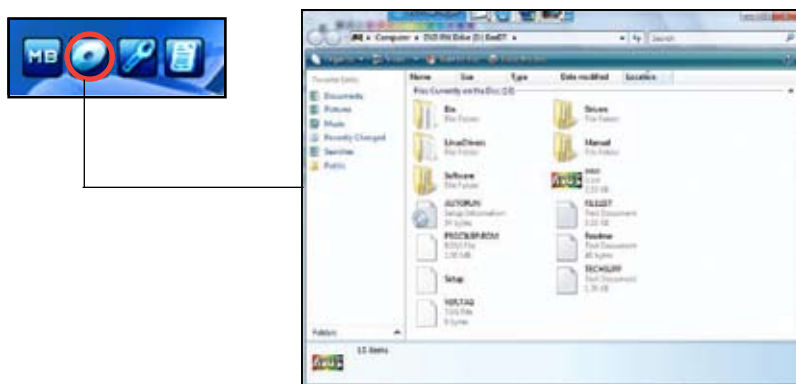
Motherboard Info

Displays the general specifications of the motherboard.



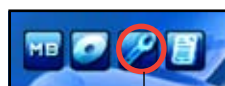
Browse this DVD

Displays the Support DVD contents in graphical format.



Technical support Form

Displays the ASUS Technical Support Request Form that you have to fill out when requesting technical support.



ASUS/MS TECHNICAL SUPPORT REQUEST FORM DATE:

COMPANY NAME: CONTACT NAME:

PHONE (AREA): FAX # (AREA):

EMAIL ADDRESS:

HARDWARE DESCRIPTION

COMPONENT	REVISION #	MODEL NAME	SIZE
MOTHERBOARD			
CPU BRAND			
GPU BRAND			
CACHE BRAND			
HARD DISK			
CD/DVD BRAND			
BACKUP BRAND			
OPTICAL STORAGE			

SOFTWARE DESCRIPTION

SOFTWARE	MODEL NAME	VERSION
OS		
BIOS		
UTILITY		
DRIVER		
APPLICATION		

Filelist

Displays the contents of the Support DVD and a brief description of each in text format.



Filelist - Supported

File list for the included support software for Asus(P5500-SP) motherboard

File Name	Description
-Drivers	
-Audio	-Realtek AL660 Audio Driver V5.10.0.5195 for Windows XP & Windows Vista
-Chipset	
-Intel\inf	-Intel Chipset INF update program Package V8.1.0.1003 for Windows XP
-VGA	
-nv420_605	-ATI nv420_605 display driver V8.671.0.0 for Windows XP/64bit XP/Vista
-SATA	-Intel SATA RAID Driver V1.7.29.2 for Windows XP & 64bit XP & Vista
-IDE	-IDE IDE Driver V2.1.0.1 for Windows XP/64bit XP/Vista
-LAN	
-Realtek	-Realtek RTL8111C LAN Driver V5.686.100.2008 for Windows XP & 64bit XP
-Vista	-Realtek RTL8111C LAN Driver V5.686.100.2008 for Windows Vista/64bit Vista
-Wireless	
-ASUS	-ASUS UPL-N2112 Wireless LAN Driver V2.1.0.0 for Windows XP & 64bit XP
-ASUS	-ASUS UPL-N2112 Wireless LAN Driver V2.1.0.0 for Windows Vista/64bit Vista
-ASUS	-ASUS UPL-N2112 Wireless LAN Driver V2.1.0.0 for Windows XP & 64bit XP
-ASUS	-ASUS UPL-N2112 Wireless LAN Driver V2.1.0.0 for Windows Vista/64bit Vista
-USB	
-USB	-USB 2.0 Driver Installation for Windows XP

2.4 ASUS AI Manager

ASUS AI Manager allows you to launch AI Disk, AI Security, and AI Probe easily.

2.4.1 Installing AI Manager

To install AI Manager on your computer:

1. Place the Support DVD into the optical drive. The DVD automatically displays the **Drivers** menu if Autorun is enabled on your computer.



If Autorun is NOT enabled on your computer, browse the contents of the Support DVD to locate the file ASSETUP.EXE from the BIN folder. Double-click the ASSETUP.EXE to run the DVD.

2. Click the **Utilities** tab, then click **ASUS AI Manager**.
3. Follow the screen instructions to complete the installation.

2.4.2 Launching AI Manager

You can launch AI Manager right after installation or anytime from the Windows® desktop.

To launch AI Manager from the Windows® desktop, click **Start > All Programs > ASUS > AI Manager > AI Manager v1.xx.xx**. The AI Manager Quick Bar appears.



After launching the application, the AI Manager icon appears in the Windows® taskbar. Right-click this icon for more options.




2.4.3 AI Manager Quick Bar

Click the Main, My favorites, Support, or Information icon from the Quick Bar to show the corresponding menu.



Click  to switch between a full-screen AI Manager window and the Quick bar.

Click  to keep AI Manager in the taskbar.

Click  to close AI Manager.

2.4.4 Main

Launch AI Disk, AI Security, or AI Probe from the Main menu. Click the small triangle to open or close the Main menu.



Click to open/close the Main menu

AI Disk

AI Disk allows you to easily clear the temporary IE files, IE URLs, IE cookies, IE history list, Recycle Bin, and recently opened files list. Select the item that you want to clear, then click **Apply**.



AI Security

AI Security allows you to set passwords to lock your removable storage devices such as a USB flash disk and a CD/DVD disk, which ensures more security for your data.

To lock a device:

1. If you are using AI Security for the first time, key in a password that consists of no more than 20 letters, numbers, or symbols.
2. Confirm your password.
3. Key in your password hint (optional).
4. Click **OK**.



5. Select the device you want to lock, then click **Apply**.



6. Key in your password, then click **OK**. The device you selected cannot be accessed without the password.

To unlock a device:

1. Deselect the device you locked, then click **Apply**.
2. Key in your password, then click **OK**.

To change your password, click **Change Password** and follow the screen instructions.

AI Probe

AI Probe automatically detects the motherboard and CPU temperatures, CPU fan speed, and CPU voltage. It also allows you to adjust these values manually.



2.4.5 My favorites

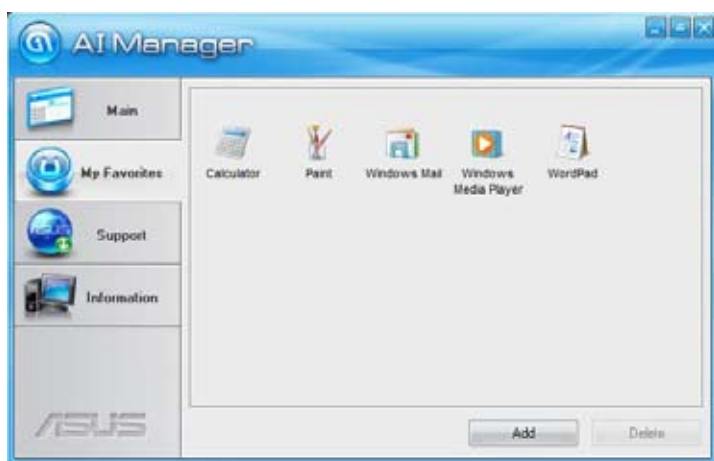
Add your favorite applications to the **My Favorites** menu.

To add an application:

1. Click **Add** and then select from the succeeding screen the application you want to add to the **My Favorites** menu.
2. Click **Open**. The application you selected is added and its icon appears.

Right-click an icon in the **My Favorites** menu to open, delete, or rename the corresponding application.

Double-click an icon to open the corresponding application.



2.4.6 Support

The **Support** menu displays links to the ASUS international website, online technical support website, online download support website, and contact information website.



2.4.7 Information

The **Information** menu displays the general information of your system, motherboard, CPU, BIOS, memory, and other devices installed.



2.5 Loading the initial OS default settings

If you want to load the initial default settings for your system, press <F3> during the Power-On Self-Test (Post).

2.6 Recovery CD (optional)

The ASUS PC Recovery CD assists you in reinstalling the OS and restoring it to its original working state. Before using the recovery CD, copy your data files to a USB flash disk or to a network drive and make note of any customized configuration settings such as network settings.



The availability of the ASUS PC Recovery CD depends on the desktop PC you purchased. Check with your supplier for exact offers.

2.6.1 Recovering a Windows® XP OS

To recover a Windows XP OS:

1. Insert the first Recovery CD into the optical disk drive. Press <F8> when the ASUS logo appears. Select the optical drive as the boot device.
2. Select **Recover system to a partition** or **Recovery system to entire HD**. Click **Next**.
3. A confirmation screen pops up. Click **Next** to confirm.
4. Check **I accept** from the succeeding screen and click **Next**.
5. A list displays the contents you are going to recover. Click **Yes** to confirm. The recovery process starts.
6. Insert the second Recovery CD, then click **OK**.
7. Insert the Support DVD, then click **OK**. The system restarts.
8. After the system reboots, the Windows XP will begin system configurations. Follow the onscreen instructions to complete the process, and then restarts the system. Adjust the screen to a suitable display resolution.



The ASUS PC Recovery CD is for ASUS Desktop PC only. **DO NOT** use it on other systems. Visit the ASUS website at www.asus.com for any updates.

2.6.2 Recovering a Windows® Vista OS

To recover a Windows Vista OS:

1. Turn on your ASUS Desktop PC and press **F8** when the ASUS logo appears.
2. Insert the recovery CD into the optical drive when a **Please select boot device** menu appears. Select the optical drive as the boot device and then press **Enter** to continue.



If you want to recover the system from the hidden partition, press **F9** when the ASUS logo appears. Then follow the instructions 3-6 below.

3. After the system reboots, an ASUS Preload window appears. Press **Next** to continue.
4. Select where to install a new system. Options are:

Recover Windows to first partition only:

This option deletes only the first partition, allows you to keep other partitions, and creates a new system partition as drive "C".

Recover Windows to entire HD:

This option deletes all partitions from your hard disk and creates a new system partition as drive "C".

Recover Windows to entire HD with 2 partitions:

This option deletes all partitions from your hard disk and creates two new system partitions. The first partition takes up 60% of the whole hard disk size and the second partition takes up 40%. The new system is installed in the first partition. You can back up your data in the second partition.

5. When a window appears querying **Are you sure you want to recover now**, click **Finish**. The process percentage is displayed on the screen.
6. When **Recovery finish** message appears, click **OK** and the system restarts. After it restarts, follow the onscreen instructions to complete the system configurations.



The ASUS PC Recovery CD is for ASUS Desktop PC only. **DO NOT** use it on other systems. Visit the ASUS website at www.asus.com for any updates.

[illegible]