

RTU7305 EEPROM/Flash Upgrade Guide

Document Information

	Information
Document ID	
Document Released by	Simon Chuang and Chris Hsu
Release Date	10/17/2008
File Name	RTU7305 EEPROM/Flash Upgrade Guide v0.8

Document History

Version	Issue Date	Changes
0.5	12/19/2007	Initial release
0.6	04/17/2008	Update for WHCI Release 1.0
0.7	06/05/2008	Update for WHCI Release 1.03
0.8	10/17/2008	Update for Firmware Upgrade Tools v2.0

Table of Contents

1	Introduction.....	2
2	Generic Port I/O Driver Installation	2
3	Firmware Upgrade	3

1 Introduction

This document describes how to update the WHCI firmware and how to use the firmware upgrade application in Microsoft Windows XP/Vista environment. The firmware upgrade utility described below is for the regular firmware update. The card-dependent information such as country code and MAC address and etc. will not be updated.

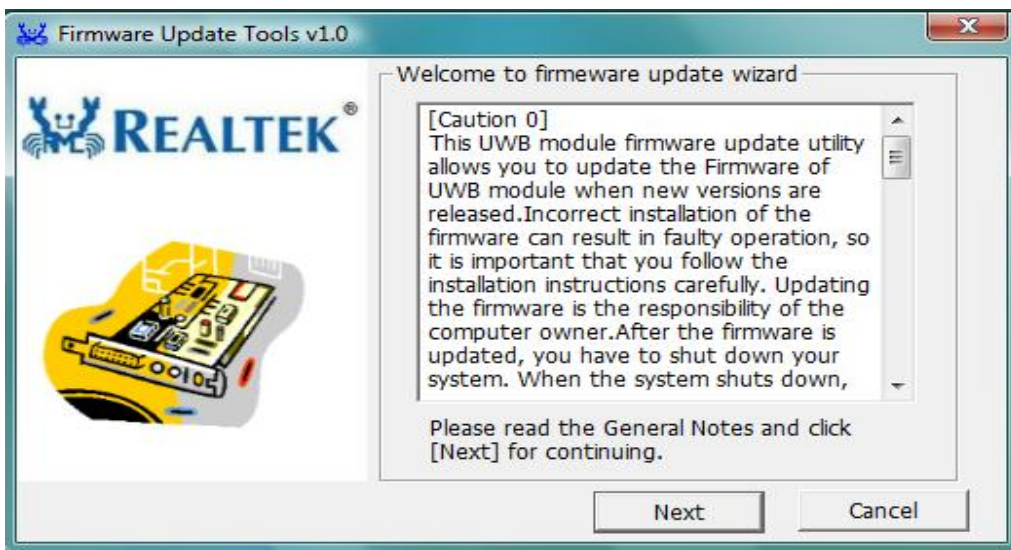
2 Generic Port I/O Driver Installation

Please unzip the WHCI software package for later use. Run Realtek WHCI Installation file "Realtek WHCI [version] x86 [Date].exe".

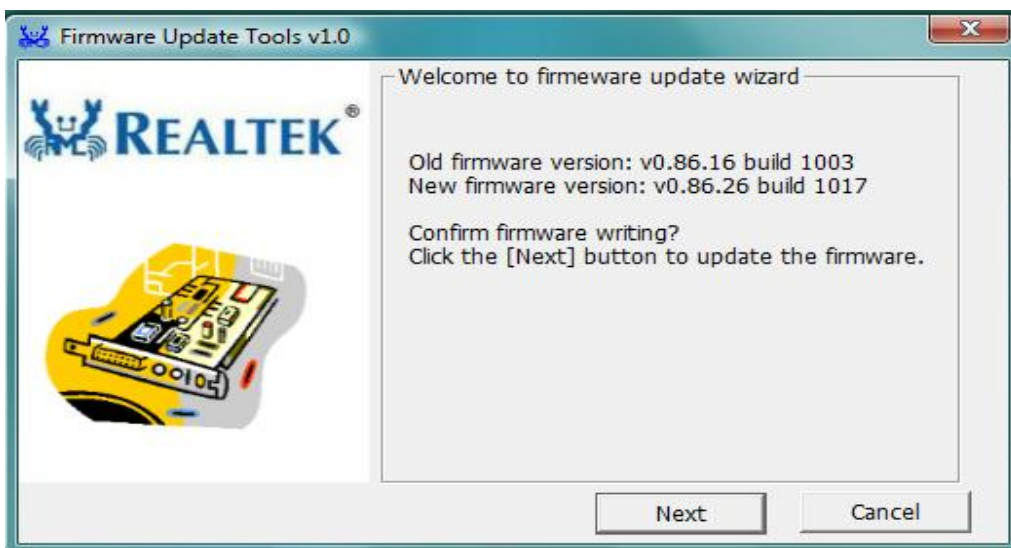
3 Firmware Upgrade

Please make sure the WHCI driver package is installed and the WHCI host drivers are shown normally in the device manager window.

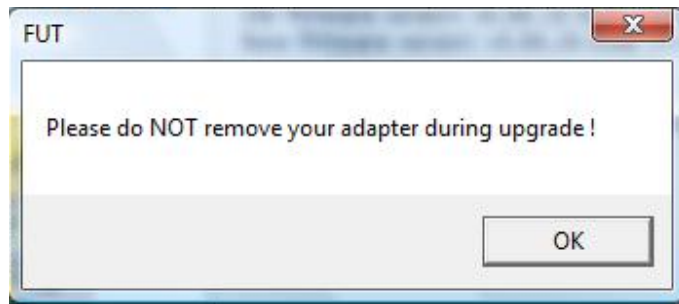
1. Run the “FUT.exe” in the directory of “WHCI Release [version][date]\ Flash_EEPROM Utility\FirmwareUpgrade [version]”.
2. Please read the General Notes and click “Next” button for continue.



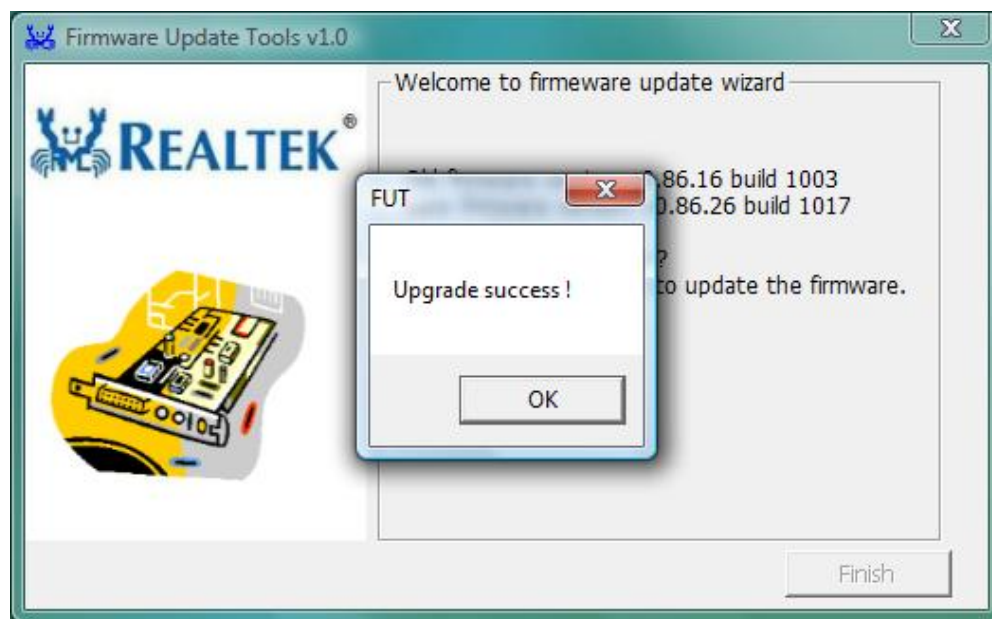
3. You can get the current hardware firmware and the Newer firmware information in this page. Click the “Next” button to execute F/W upgrade.



4. Please don't remove or power cycle your WHCI host during Flash programming.



5. After the F/W image is burned to the flash, click the "Finish" button, the final popup message is shown and the F/W upgrade process is done. Please click the "OK" button to close the message box, and click the "Finish" button to close the F/W upgrade program.





6. Final step, the new F/W will be loaded after you restart the system or WHCI adaptor card is unplugged and plugged.

