



WiCast Wireless HDMI Kit



EW2000 User Manual

15G067630000





E6158
Second Edition
October 2010

Copyright © 2010 ASUSTeK Computer Inc. All Rights Reserved. No part of this manual, including the products and software described in it, may be reproduced, transmitted, transcribed, stored in a retrieval system, or translated into any language in any form or by any means, except documentation kept by the purchaser for backup purposes, without the express written permission of ASUSTeK Computer Inc. ("ASUS").

Product warranty or service will not be extended if: (1) the product is repaired, modified or altered, unless such repair, modification or alteration is authorized in writing by ASUS; or (2) the serial number of the product is defaced or missing.

ASUS PROVIDES THIS MANUAL "AS IS" WITHOUT WARRANTY OF ANY KIND, EITHER EXPRESS OR IMPLIED, INCLUDING BUT NOT LIMITED TO THE IMPLIED WARRANTIES OR CONDITIONS OF MERCHANTABILITY OR FITNESS FOR A PARTICULAR PURPOSE. IN NO EVENT SHALL ASUS, ITS DIRECTORS, OFFICERS, EMPLOYEES OR AGENTS BE LIABLE FOR ANY INDIRECT, SPECIAL, INCIDENTAL, OR CONSEQUENTIAL DAMAGES (INCLUDING DAMAGES FOR LOSS OF PROFITS, LOSS OF BUSINESS, LOSS OF USE OR DATA, INTERRUPTION OF BUSINESS AND THE LIKE), EVEN IF ASUS HAS BEEN ADVISED OF THE POSSIBILITY OF SUCH DAMAGES ARISING FROM ANY DEFECT OR ERROR IN THIS MANUAL OR PRODUCT.

SPECIFICATIONS AND INFORMATION CONTAINED IN THIS MANUAL ARE FURNISHED FOR INFORMATIONAL USE ONLY, AND ARE SUBJECT TO CHANGE AT ANY TIME WITHOUT NOTICE, AND SHOULD NOT BE CONSTRUED AS A COMMITMENT BY ASUS. ASUS ASSUMES NO RESPONSIBILITY OR LIABILITY FOR ANY ERRORS OR INACCURACIES THAT MAY APPEAR IN THIS MANUAL, INCLUDING THE PRODUCTS AND SOFTWARE DESCRIBED IN IT.

Products and corporate names appearing in this manual may or may not be registered trademarks or copyrights of their respective companies, and are used only for identification or explanation and to the owners' benefit, without intent to infringe.





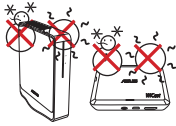
Table of Contents

Safety information	4
EW2000 Specifications summary.....	5
Getting to know your WiCast Wireless HDMI Kit.....	6
Package contents.....	6
WiCast receiver features	7
WiCast transmitter features.....	7
Connecting devices	8
Connecting your notebook with an external display	9
Connecting your desktop PC with an external display	11
Connecting your audio / video devices with an external display	12
Adjusting the screen resolution	13
Adjusting the screen resolutions on both the notebook and the external display	14
Adjusting the screen resolution on the notebook or external display only	14
Adjusting the audio	16
Windows® 7	16
Troubleshooting	16
Notices.....	18
ASUS Contact information	24





Safety information



SAFE TEMP: The WiCast Wireless HDMI Kit should only be used in environments with ambient temperatures between 5°C (41°F) and 35°C (95°F).



DO NOT expose to dirty or dusty environments. **DO NOT** operate during a gas leak.



DO NOT expose to or use near liquids, rain, or moisture.



DO NOT place or drop objects on top and do not shove any foreign objects into the WiCast Wireless HDMI Kit.



DO NOT expose to strong magnetic or electrical fields.



DO NOT throw the WiCast Wireless HDMI Kit in municipal waste. Check local regulations for disposal of electronic products.





EW2000 Specifications summary

Video	Up to 1080p 60Hz, <1 ms latency
Audio	Up to 8 channels
Wireless HDMI technology	WHDI
Transmission distance	Up to 10 meters (Line of sight)
Operation frequency	5.15 ~ 5.85 GHz
Data rate	3G bps
Power supply	Transmitter: 5V, 2A 10W adapter (if USB power is not available) Receiver: 5V, 2A 10W adapter
Power consumption	Transmitter: 4.75W (powered by USB) Receiver: 10W
I/O ports	Transmitter: <ul style="list-style-type: none">- HDMI port x 1- mini-USB x 1- DC-In port x 1 Receiver: <ul style="list-style-type: none">- HDMI port x 1- DC-In port x 1
Weight	Transmitter: 110g Receiver: 160g
Dimensions	Transmitter: 103 x 68 x 28.65 mm (L x W x H) Receiver: 105 x 25 x 125 mm (L x W x H)



NOTE: Specifications are subject to change without prior notice.

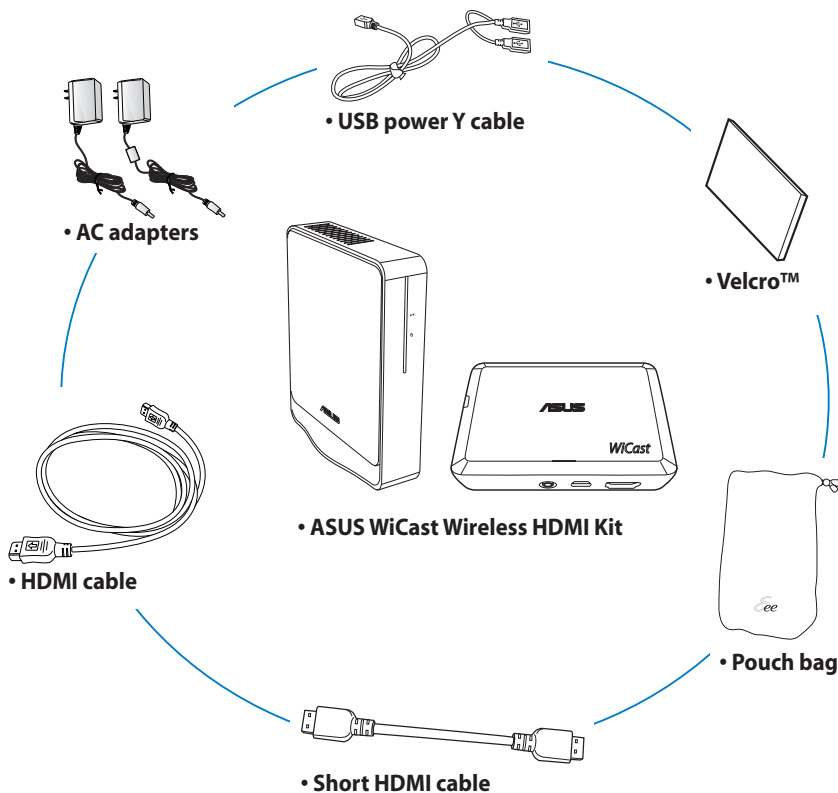




Getting to know your WiCast Wireless HDMI Kit

ASUS WiCast EW2000 allows you to wirelessly extend audio/video sources between high-definition multimedia devices up to a ten-meter radius for a latency-free (<1ms) full HD 1080p video and crystal-clear audio transmissions. Its WHDI™ (Wireless Home Digital Interface) technology transmissions are not limited by directionality or line of sight.

Package contents



* If any of the above items is damaged or missing, contact your retailer.

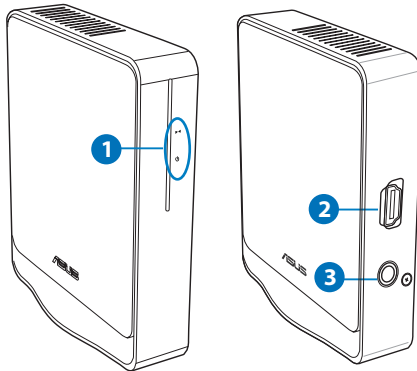






WiCast receiver features

Front view

Rear view

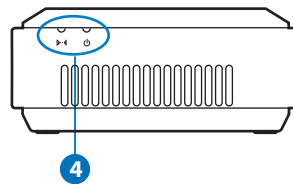
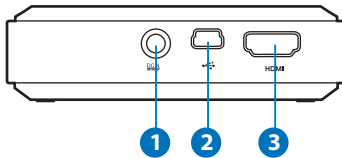




1	LED indicators  WHDI LED  Power LED
2	HDMI port
3	DC-In port

WiCast transmitter features

Rear view

Right-side view



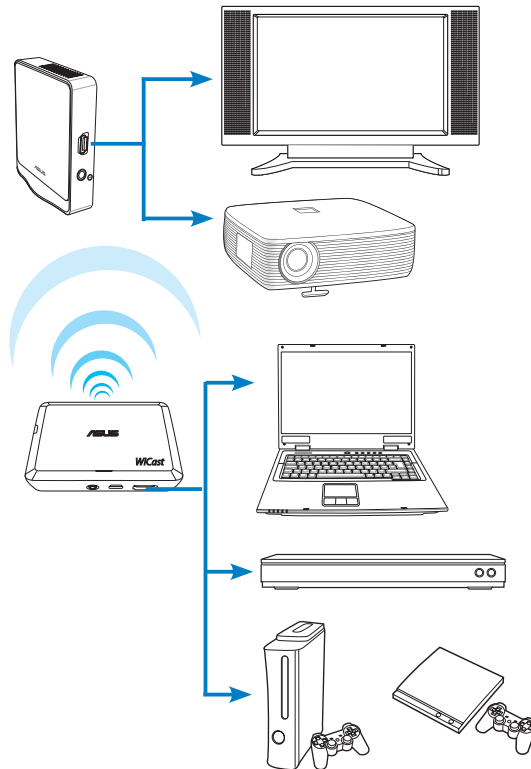
1	DC-In port	3	HDMI port
2	mini-USB port	4	LED indicators  WHDI LED  Power LED





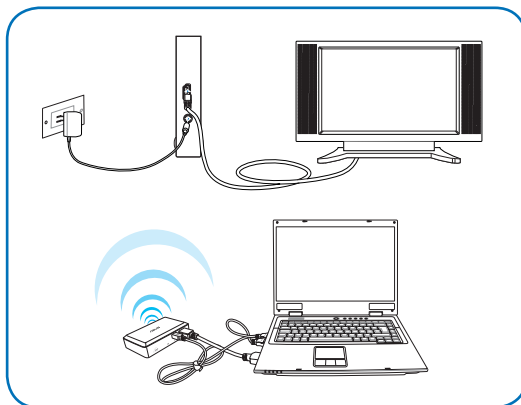
Connecting devices

Use your ASUS WiCast Wireless HDMI Kit to wirelessly extend audio/video sources between high-definition multimedia devices such as Blu-ray disk drives, audio/video receivers, computers, set-top box, Xbox, PS3, and HDTV/HD display.





Connecting your notebook with an external display



To connect your notebook with an external display:

1. Using the bundled HDMI cable, connect the WiCast receiver to a high-definition external display such as an HDTV or LCD projector.
2. Insert the bundled AC adapter into the receiver's DC-In port, and plug it into a power outlet.
3. Using the bundled short HDMI cable, connect the WiCast transmitter to your notebook.



NOTE: In some locations except USA, Canada, Hong kong, and Singapore, you need to wait for about a minute before the WiCast receiver can establish a solid connection when you are using it for the first time.



NOTES:

- To charge the WiCast transmitter, use either the bundled USB power Y cable or the AC adapter.
- The bundled AC adapter with core is for the transmitter. The other bundled AC adapter is for the receiver.
- You may purchase a longer HDMI cable for your transmitter, if required.





4. After seeing a slow blinking LED signal, then you can toggle display content from your notebook to the external display.
5. When your notebook and the external display are successfully connected, the LED signal displays solid white.



NOTE: Refer to your notebook's user manual for the correct function/hot keys to toggle between two displays.

6. When you toggle between your notebook and the external display, the video and audio outputs should switch simultaneously. If you cannot hear any audio after the display change, adjust the volume on your notebook and on the external display .



NOTE: For more details, refer to the section **Adjusting the audio** on page 19 of this user manual.

7. Adjust the screen resolution.

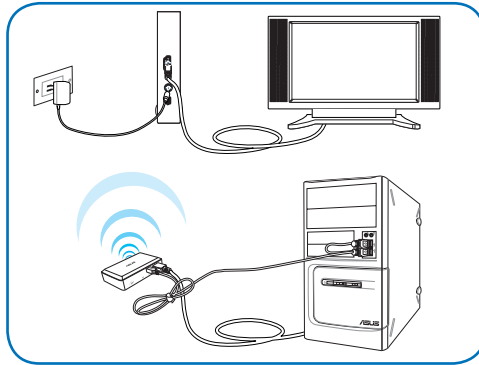


NOTE: For more details, refer to the section **Adjusting the screen resolution** on pages 15-19 of this user manual.





Connecting your desktop PC with an external display



To connect your desktop PC with an external display:

1. Using the bundled HDMI cable, connect the WiCast receiver to a high-definition external display such as an HDTV or LCD projector.
2. Insert the bundled AC adapter into the receiver's DC-In port, and plug it into a power outlet.
3. Using the bundled short HDMI cable, connect the WiCast transmitter to your desktop PC



NOTE: In some locations except USA, Canada, Hong kong, and Singapore, you need to wait for about a minute before the WiCast receiver can establish a solid connection when you are using it for the first time.



NOTES:

- To charge the WiCast transmitter, use either the bundled USB power Y cable or the AC adapter.
- The bundled AC adapter with core is for the transmitter. The other bundled AC adapter is for the receiver.
- You may purchase a longer HDMI cable for your transmitter, if required.





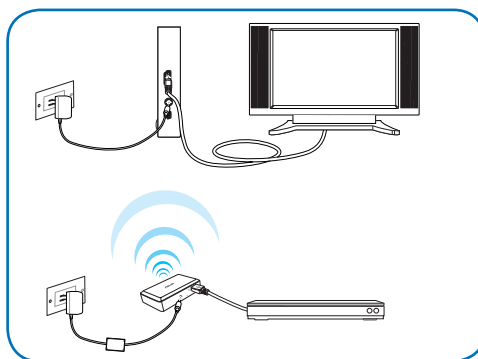
4. When your external display and your desktop PC are successfully connected, the LED signal displays solid white.
5. If you cannot hear any audio, click the audio/speaker icon on your Windows® taskbar and make the necessary adjustments.



NOTE: For more details, refer to the section **Adjusting the audio** on page 19 of this user manual.

Connecting your audio / video devices with an external display

Use your ASUS WiCast Wireless HDMI Kit to wirelessly extend audio/video sources between high-definition multimedia devices such as Blu-ray disk drives, audio/video receivers, computers, set-top box, Xbox, PS3, and HDTV/HD display.



To connect your audio/video devices with an external display:

1. Using the bundled HDMI cable, connect the WiCast receiver to your external display.
2. Insert the bundled AC adapter into the receiver's DC-In port, and plug it into a power outlet.
3. Using the bundled short HDMI cable, connect the WiCast transmitter to the audio/video device.
4. Insert the bundled AC adapter with core into the transmitter's DC-in port, and plug it into a power outlet.





NOTES:

- In some locations except USA, Canada, Hong kong, and Singapore, you need to wait for about a minute before the WiCast receiver can establish a solid connection when you are using it for the first time.
- To charge the WiCast transmitter, use either the bundled USB power Y cable or the AC adapter.
- The bundled AC adapter with core is for the transmitter. The other bundled AC adapter is for the receiver.
- You may purchase a longer HDMI cable for your transmitter, if required.

5. When your external display and the audio/video device are successfully connected, the LED signal displays solid white.

Adjusting the screen resolution



NOTES:

- You may use any of the following modes to wirelessly extend the display/video output:
 - **Show on the notebook only.**
 - **Show on the external display only.**
 - **Show on both the notebook and the external display.**
 - If both the notebook and the external display supports up to 1080p resolution, then you can enjoy a smoother video output with the 1080p screen resolution.
 - If the notebook and the external display support varied maximum screen formats, the secondary monitor follows the primary monitor's screen resolution.
 - If you want to manually adjust the maximum screen resolution, refer to the steps provided in this section.
- This section tells you how to adjust the screen resolution to 1920 x 1080 (or 1080p). You may choose to set your screen to your preferred resolution.



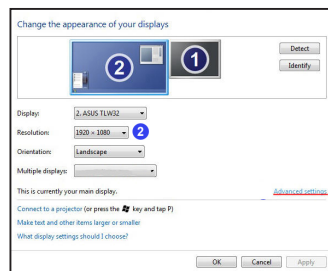
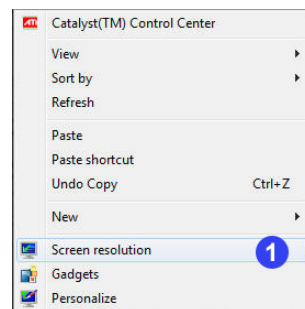


Adjusting the screen resolutions on both the notebook and the external display

Using Windows® utility

To use Windows® utility:

1. Right-click anywhere on Windows desktop and click **Screen resolution**.
2. From the **Resolution** dropdown list, select **1920 x 1080** as the screen resolution.
3. Click **Apply**.
4. Click **Keep Change** on the confirmation message **Do you want to keep these display settings?**
5. Click **OK** when done.

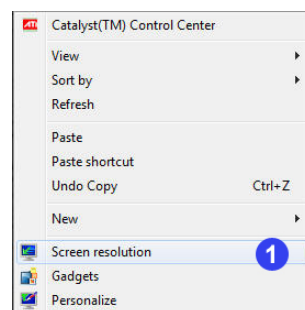


Adjusting the screen resolution on the notebook or external display only

Using Windows® utility

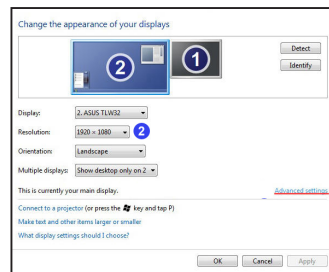
To use Windows® utility:

1. Right-click anywhere on Windows desktop and click **Screen resolution**.





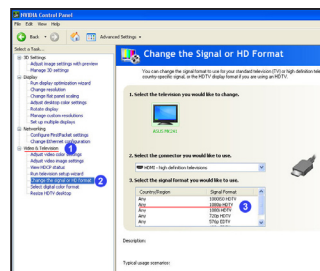
- From the **Resolution** dropdown list, select **1920 x 1080** as the screen resolution.
- From the Multiple displays dropdown list, select either **Show desktop only on 1** or **Show desktop only on 2**.
- Click **Apply**.
- Click **Keep Change** on the confirmation message **Do you want to keep these display settings?**, then click **OK**.
- From the Generic PnP Monitor and Intel® Graphics Media Accelerator HD screen, click **Monitor** and select **60 Hz** as the screen refresh rate.
- Click **OK** when done.



Using NVIDIA® utility

To use NVIDIA® utility:

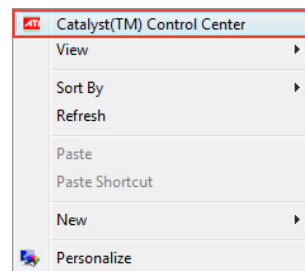
- Launch the NVIDIA Control Panel. Select **Video & Television**.
- Select **Change the signal or HD format**.
- Select **1080p HDTV** signal format.



Using ATI® utility

To use ATI® utility:

- Right-click on the Windows® desktop and select **Catalyst(TM) Control Center**. You can also right-click the ATI icon in the Windows notification area and select **Catalyst Control Center**.



- Select the monitor whose screen resolution you want to adjust.
- Select **Extended Mode** as the monitor's desktop mode.
- Click **Yes** on the confirmation message.
- From the **Desktop area** dropdown list, select your preferred screen resolution.
- From the **Refresh rate** dropdown list, select your preferred rate.
- When done, click **Apply**.
- Click **Yes** on the confirmation message.




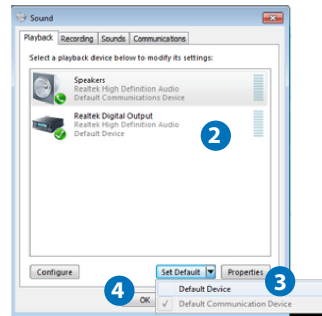


Adjusting the audio

Windows® 7

To adjust the audio on Windows® 7:

1. From the Windows® taskbar click  > **Control Panel > Hardware and Sound > Sound.**
2. From the **Playback** tab of the **Sound** dialog screen, select the playback device whose settings you want to modify.
4. From the **Set Default** dropdown list, select **Default Device.**
5. Click **OK** when done.



Troubleshooting



NOTE: If the troubleshooting tips below still cannot solve your wireless connection issue, do the following:

- Try connecting your source device directly with the external display using an HDMI cable. If there is still no wireless connection, the problem might be with the source device or the external display.
- Turn your source device and the external display on/off to ensure that the problem is not with these devices.
- Refer to your source device's or external display's user manual.

The wireless connection failed.

- Check the distance between the WiCast receiver and the WiCast transmitter. The WiCast Wireless HDMI Kit can wirelessly extend audio/video sources up to a ten-meter radius, depending on the environment.
- Ensure that there are no obstacles such as metal or thick concrete walls between the WiCast receiver and the WiCast transmitter.
- Unplug then reconnect the power cables of the WiCast receiver and the WiCast transmitter.





Ensuring that there is a display output from the computer to the external display.

- Ensure that the LED indicators on both the WiCast transmitter and the WiCast receiver are solidly lit up.
- Toggle the display content from your computer to the external display. Refer to your computer's user manual for the correct function keys to toggle between displays.

The screen flickers when the screen resolution is set to 1920 x 1080 dpi at 30Hz frequency.

You might encounter a flickering screen when you set the screen resolution to 1920 x 1080 dpi at 30Hz on some notebook/desktop PC/external display models. To fix this issue, we recommend that you:

- Change the frequency to 60Hz or change to a different screen resolution.
- Disconnect the ASUS WiCast HDMI Wireless Kit and use a physical HDMI cable to connect your notebook/desktop PC and external display.
- If you still encounter a flickering screen, check the settings on your notebook/desktop PC, audio/video devices, or external display.

There are no display outputs on the external displays.

- Check that all cables are connected properly.
- Ensure that the LED indicators on both the WiCast transmitter and the WiCast receiver are solidly lit up.
- Check the distance between your WiCast transmitter and WiCast receiver. Depending on your environment, the maximum distance for WHDI transmissions is within a ten meter radius.
- Unplug your WiCast transmitter's and WiCast receiver's AC adapters and then plug them in again.

Video output does not entirely fit or is outside the external display's screen.

- Change either your external display's or your notebook's/PC's screen resolution.
- If the video output is stretched outside the screen, check your display's video settings. Some newer high-definition external displays/TV models have correction options. Refer to your external display's user manual for this feature.





When I attach the receiver to the rear of my TV or external display, I cannot get a clear image on my TV or external display.

The metallic rear panel of some TV or external display models may cause a wireless signal decay or interference. This will result to an unclear display image on your TV or external display.

We recommend that you provide a clear path between the receiver and transmitter.

The receiver with the velcro sticker would not stick to the external display.

Clean the surfaces of the devices with a clean cloth before using the Velcro sticker to attach the receiver to the external display. This will ensure that the receiver will firmly attach to the external display.

The receiver cannot stand firmly in place.

Your receiver has a sticker at the bottom to make it stand firmly in place. If the receiver cannot stand firmly in place, gently wipe the receiver's bottom with a clean and mildly soapy damp cloth.

Notices

REACH

Complying with the REACH (Registration, Evaluation, Authorisation, and Restriction of Chemicals) regulatory framework, we published the chemical substances in our products at ASUS REACH website at <http://green.asus.com/english/REACH.htm>.

Federal Communications Commission Interference Statement

EW2000RX FCC ID: MSQ-EW2000RX
EW2000TX Contain Module FCC ID: MSQ-EW2000TX

This device complies with FCC Rules Part 15. Operation is subject to the following two conditions:

- This device may not cause harmful interference.
- This device must accept any interference received, including interference that may cause undesired operation.





This equipment has been tested and found to comply with the limits for a class B digital device, pursuant to Part 15 of the Federal Communications Commission (FCC) rules. These limits are designed to provide reasonable protection against harmful interference in a residential installation. This equipment generates, uses, and can radiate radio frequency energy and, if not installed and used in accordance with the instructions, may cause harmful interference to radio communications. However, there is no guarantee that interference will not occur in a particular installation. If this equipment does cause harmful interference to radio or television reception, which can be determined by turning the equipment off and on, the user is encouraged to try to correct the interference by one or more of the following measures:

- Reorient or relocate the receiving antenna.
- Increase the separation between the equipment and receiver.
- Connect the equipment into an outlet on a circuit different from that to which the receiver is connected.
- Consult the dealer or an experienced radio/TV technician for help.



CAUTION: Any changes or modifications not expressly approved by the party responsible for compliance could void the user's authority to operate the equipment.

FCC Radiation Exposure Statement

This equipment complies with FCC radiation exposure limits set forth for an uncontrolled environment. This equipment should be installed and operated with minimum distance 20cm between the radiator & your body.

This transmitter must not be co-located or operating in conjunction with any other antenna or transmitter. If the device is going to be operated in 5.15 ~ 5.25GHz frequency range, then it is restricted to an indoor environment only.

RF Exposure warning

- The equipment complies with FCC RF exposure limits set forth for an uncontrolled environment.
- The equipment must be co-located or operated in conjunction with any other antenna or transmitter.

CE Mark Warning

This is a Class B product, in a domestic environment, this product may cause radio interference, in which case the user may be required to take adequate measures.





IC Radiation Exposure Statement for Canada

EW2000RX IC: 3568A-EW200RX

EW2000TX Contain Module IC: 3568A-EW2000TX

This equipment complies with IC radiation exposure limits set forth for an uncontrolled environment. To maintain compliance with IC RF exposure compliance requirements, please avoid direct contact to the transmitting antenna during transmitting. End users must follow the specific operating instructions for satisfying RF exposure compliance.

Operation is subject to the following two conditions:

- This device may not cause interference.
- This device must accept any interference, including interference that may cause undesired operation of the device.

This device should be used only as specified within this manual to meet RF exposure requirements. Using this device in a manner inconsistent with this manual could lead to excessive RF exposure conditions.

This device and its antenna(s) must not be co-located or operating in conjunction with any other antenna or transmitter.

Country Code selection feature to be disabled for products marketed to the US/CANADA.

If the device is going to be operated in 5.15 ~ 5.25GHz frequency range, then it is restricted to an indoor environment only.

This Class [B] digital apparatus complies with Canadian ICES-003.
Cet appareil numérique de la classe [B] est conforme à la norme NMB-003 du Canada





NCC警語

經型式認證合格之低功率射頻電機，非經許可，公司、商號或使用者均不得擅自變更頻率、

加大功率或變更原設計之特性及功能。

低功率射頻電機之使用不得影響飛航安全及干擾合法通信；經發現有干擾現象時，應立即

停用，並改善至無干擾時方得繼續使用。

前項合法通信，指依電信法規定作業之無線電通信。

低功率射頻電機須忍受合法通信或工業、科學及醫療用電波輻射性電機設備之干擾。

在 5.25-5.35 兆赫頻帶內操作之無線資訊傳輸設備，限於室內使用。

無線資訊傳輸設備忍受合法通信之干擾且不得干擾合法通信；如造成干擾，應立即停用，俟無干擾之虞，始得繼續使用。

無線資訊傳輸設備的製造廠商應確保頻率穩定性，如依製造廠商使用手冊上所述正常操作，發射的信號應維持於操作頻帶中





Declaration of Conformity for R&TTE directive 1999/5/EC

Hereby, ASUS declares that this ASUS WiCast is in compliance with the essential requirements and other relevant provisions of Directive 1995/5/EC.

This device will be sold in the following EEA (European Economic Area) countries: **Austria, Italy, Belgium, Liechtenstein, Denmark, Luxembourg, Finland, Netherlands, France, Norway, Germany, Portugal, Greece, Spain, Iceland, Sweden, Ireland, United Kingdom, Cyprus, Czech Republic, Estonia, Hungary, Latvia, Lithuania, Malta, Slovakia, Poland, and Slovenia.**

CE Mark Warning

This is a Class B product, in a domestic environment, this product may cause radio interference, in which case the user may be required to take adequate measures.



CAUTION: The device for the band 5150-5350 MHz is only for indoor use.





EC Declaration of Conformity



We, the undersigned,

Manufacturer:	ASUSTek COMPUTER INC.
Address, City:	No. 150, LI-TE RD., PEITOU, TAIPEI 112, TAIWAN R.O.C.
Country:	TAIWAN
Authorized representative in Europe:	ASUS COMPUTER GmbH
Address, City:	HARKORT STR. 21-23, 40880 RATINGEN
Country:	GERMANY

declare the following apparatus:

Product name :	ASUS WiCast
Model name :	EW2000, EW2000TX, EW2000RX

conform with the essential requirements of the following directives:

☒ **2004/108/EC-EMC Directive**

<input checked="" type="checkbox"/> EN 55022:2006+A1:2007	<input checked="" type="checkbox"/> EN 55024:1998+A1:2001+A2:2003
<input checked="" type="checkbox"/> EN 61000-3-2:2006	<input checked="" type="checkbox"/> EN 61000-3-3:1995/A2:2005
<input type="checkbox"/> EN 55013:2001+A1:2003+A2:2006	<input type="checkbox"/> EN 55020:2007

☒ **1999/5/EC-R & TTE Directive**

<input type="checkbox"/> EN 300 328 V1.7.1(2006-05)	<input checked="" type="checkbox"/> EN 301 489-1 V1.8.1(2008-04)
<input type="checkbox"/> EN 300 440-1 V1.4.1(2008-05)	<input type="checkbox"/> EN 301 489-3 V1.4.1(2002-08)
<input type="checkbox"/> EN 300 440-2 V1.2.1(2008-03)	<input type="checkbox"/> EN 301 489-4 V1.3.1(2002-08)
<input type="checkbox"/> EN 301 511 V9.0.2(2003-03)	<input type="checkbox"/> EN 301 489-7 V1.3.1(2005-11)
<input type="checkbox"/> EN 301 908-1 V3.2.1(2007-05)	<input type="checkbox"/> EN 301 489-9 V1.4.1(2007-11)
<input type="checkbox"/> EN 301 908-2 V3.2.1(2007-05)	<input checked="" type="checkbox"/> EN 301 489-17 V1.3.2(2008-04)
<input checked="" type="checkbox"/> EN 301 893 V1.5.1(2008-12)	<input type="checkbox"/> EN 301 489-24 V1.4.1(2007-09)
<input type="checkbox"/> EN 50360:2001	<input type="checkbox"/> EN 302 326-2 V1.2.2(2007-06)
<input type="checkbox"/> EN 50371:2002	<input type="checkbox"/> EN 302 326-3 V1.3.1(2007-09)
<input checked="" type="checkbox"/> EN 62311:2008	<input type="checkbox"/> EN 301 357-2 V1.3.1(2006-05)
<input type="checkbox"/> EN 50385:2002	

☒ **2006/95/EC-LVD Directive**

<input type="checkbox"/> EN 60950-1:2001+A11:2004	<input type="checkbox"/> EN60065:2002+A1:2006
<input type="checkbox"/> EN 60950-1:2006	<input checked="" type="checkbox"/> EN 60950-1:2006+A11:2009

☐ **2009/125/EC-ErP Directive**

Regulation (EC) No. 1275/2008	Regulation (EC) No. 278/2009
<input type="checkbox"/> EN 62301:2005	<input type="checkbox"/> EN 62301:2005
Regulation (EC) No. 642/2009	
<input type="checkbox"/> EN 62301:2005	

☒ **CE marking**



(EC conformity marking)

Position : **CEO**

Name : **Jerry Shen**

Declaration Date: Jul. 23, 2010

Year to begin affixing CE marking:2010

Signature : _____





ASUS Contact information

ASUSTeK COMPUTER INC. (Asia Pacific)

Address 15 Li-Te Road, Peitou, Taipei, Taiwan 11259
Telephone +886-2-2894-3447
Fax +886-2-2890-7798
Website www.asus.com.tw

Technical Support

Telephone +86-21-3842-9911
Online support support.asus.com

ASUS COMPUTER INTERNATIONAL (America)

Address 800 Corporate Way, Fremont, CA 94539, USA
Telephone +1-510-739-3777
Fax +1-510-608-4555
Website usa.asus.com

Technical Support

Telephone +1-812-282-2787
Support fax +1-812-284-0883
Online support support.asus.com

ASUS COMPUTER GmbH (Germany and Austria)

Address Harkort Str. 21-23, D-40880 Ratingen, Germany
Fax +49-2102-9599-11
Online contact www.asus.com.de/sales

Technical Support

Telephone (Component) +49-1805-010923*
Telephone (System/
Notebook/Eee/LCD) +49-1805-010920*
Support fax +49-2102-959911
Online support www.asus.com.de/support
Website www.asus.com.de/news

* EUR 0.14/minute from a German fixed landline; EUR 0.42/minute from a mobile phone.

Manufacturer:	ASUSTeK Computer Inc.
	Tel: +886-2-2894-3447
	Address: No. 150, LI-TE RD., PEITOU, TAIPEI 112, TAIWAN
Authorised representative in Europe:	ASUS Computer GmbH
	Address: HARKORT STR. 21-23, 40880 RATINGEN, GERMANY

