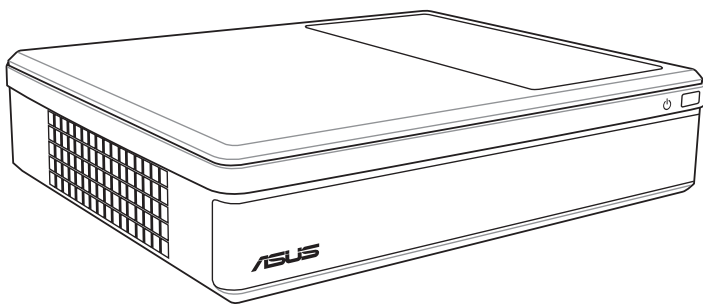


NOVA LITE SURF PX10

User Manual



E3670

First Edition V1

January 2008

Copyright © 2008 ASUSTeK COMPUTER INC. All Rights Reserved.

No part of this manual, including the products and software described in it, may be reproduced, transmitted, transcribed, stored in a retrieval system, or translated into any language in any form or by any means, except documentation kept by the purchaser for backup purposes, without the express written permission of ASUSTeK COMPUTER, INC. ("ASUS").

Products and corporate names mentioned in this manual may or may not be registered trademarks or copyrights of their respective companies, and are used for identification purposes only. All trademarks are the property of their respective owners.

Every effort has been made to ensure that the contents of this manual are correct and up to date. However, the manufacturer makes no guarantee regarding the accuracy of its contents, and reserves the right to make changes without prior notice.

Contents

Contents.....	3
Notices	4
Safety information.....	6
Notes for this manual	8
Welcome	9
Package contents.....	9
Knowing your PX10	10
Front view	10
Rear view.....	11
Bottom view	12
Positioning your PX10.....	13
Setting up your PX10	14
Display connection	14
USB devices connection	15
Network connection.....	16
Configuring audio output	17
Connecting to speakers	18
Using your PX10	19
Setting up a network connection.....	19
Using a static IP	19
Using a dynamic IP (PPPoE connection)	20
Configuring audio output settings	23
Using ASUS Easy Update.....	25
Recovering your system	26
Using the recovery DVD	26
Using the hidden partition	28
Entering Red Flag Linux OS	30
Installing Windows® XP	31

Notices

Federal Communications Commission Statement

This device complies with Part 15 of the FCC Rules. Operation is subject to the following two conditions:

- This device may not cause harmful interference, and
- This device must accept any interference received including interference that may cause undesired operation.

This equipment has been tested and found to comply with the limits for a Class B digital device, pursuant to Part 15 of the FCC Rules.

These limits are designed to provide reasonable protection against harmful interference in a residential installation. This equipment generates, uses and can radiate radio frequency energy and, if not installed and used in accordance with manufacturer's instructions, may cause harmful interference to radio communications. However, there is no guarantee that interference will not occur in a particular installation. If this equipment does cause harmful interference to radio or television reception, which can be determined by turning the equipment off and on, the user is encouraged to try to correct the interference by one or more of the following measures:

- Reorient or relocate the receiving antenna.
- Increase the separation between the equipment and receiver.
- Connect the equipment to an outlet on a circuit different from that to which the receiver is connected.
- Consult the dealer or an experienced radio/TV technician for help.



The use of shielded cables for connection of the monitor to the graphics card is required to assure compliance with FCC regulations. Changes or modifications to this unit not expressly approved by the party responsible for compliance could void the user's authority to operate this equipment.

Canadian Department of Communications Statement

This digital apparatus does not exceed the Class B limits for radio noise emissions from digital apparatus set out in the Radio Interference Regulations of the Canadian Department of Communications.

This class B digital apparatus complies with Canadian ICES-003.

Macrovision Corporation Product Notice

This product incorporates copyright protection technology that is protected by method claims of certain U.S. patents and other intellectual property rights owned by Macrovision Corporation and other rights owners. Use of this copyright protection technology must be authorized by Macrovision Corporation, and is intended for home and other limited viewing uses only **unless otherwise authorized by Macrovision Corporation**. Reverse engineering or disassembly is prohibited.

Safety information

Your ASUS NOVA LITE SURF PX10 is designed and tested to meet the latest standards of safety for information technology equipment. However, to ensure your safety, it is important that you read the following safety instructions.

Setting up your system

- Read and follow all instructions in the documentation before you operate your system.
- Do not use this product near water or a heated source such as a radiator.
- Set up the system on a stable surface.
- Openings on the chassis are for ventilation. Do not block or cover these openings. Make sure you leave plenty of space around the system for ventilation. Never insert objects of any kind into the ventilation openings.
- Use this product in environments with ambient temperatures between 0°C and 40°C.
- If you use an extension cord, make sure that the total ampere rating of the devices plugged into the extension cord does not exceed its ampere rating.

Care during use

- Do not walk on the power cord or allow anything to rest on it.
- Do not spill water or any other liquids on your system.
- When the system is turned off, a small amount of electrical current still flows. Always unplug all power, modem, and network cables from the power outlets before cleaning the system.
- If you encounter the following technical problems with the product, unplug the power cord and contact a qualified service technician or your retailer.
 - The power cord or plug is damaged.
 - Liquid has been spilled into the system.

- The system does not function properly even if you follow the operating instructions.
- The system was dropped or the cabinet is damaged.
- The system performance changes.

Lithium-Ion Battery Warning

CAUTION: Danger of explosion if battery is incorrectly replaced. Replace only with the same or equivalent type recommended by the manufacturer. Dispose of used batteries according to the manufacturer's instructions.

LASER PRODUCT WARNING

CLASS 1 LASER PRODUCT

NO DISASSEMBLY

The warranty does not apply to the products that have been disassembled by users



This symbol of the crossed out wheeled bin indicates that the product (electrical, electronic equipment, and mercury-containing button cell battery) should not be placed in municipal waste. Check local regulations for disposal of electronic products.

Notes for this manual

To make sure that you perform certain tasks properly, take note of the following symbols used throughout this manual.



WARNING: Vital information that you **MUST** follow to prevent injury to yourself.



IMPORTANT: Instructions that you **MUST** follow to complete a task.



TIP: Tips and useful information that help you complete a task.


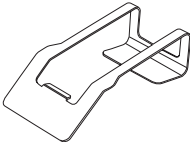
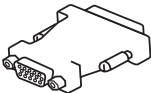
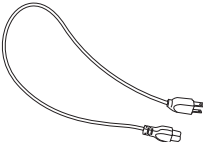
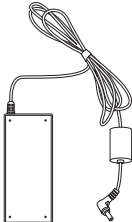


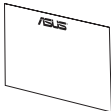



NOTE: Additional information for special situations.

Welcome

Congratulations on your purchase of the ASUS NOVA LITE SURF PX10. The following illustration displays the package contents of your new PX10. If any of the below items is damaged or missing, contact your retailer.

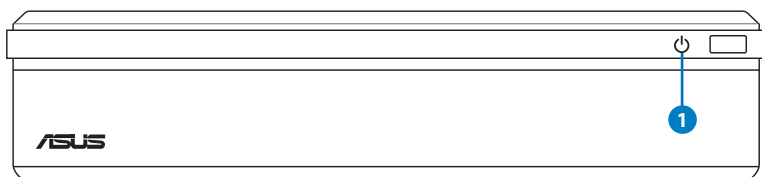
Package contents

		
NOVA LITE SURF PX10		Stand
		
DVI-D-Sub adapter	Power cord	AC adapter
		
Support DVD	Recovery DVD	Warranty card
		
Quick guide		

Knowing your PX10

Front view

Refer to the diagram below to learn about the system front panel.



1

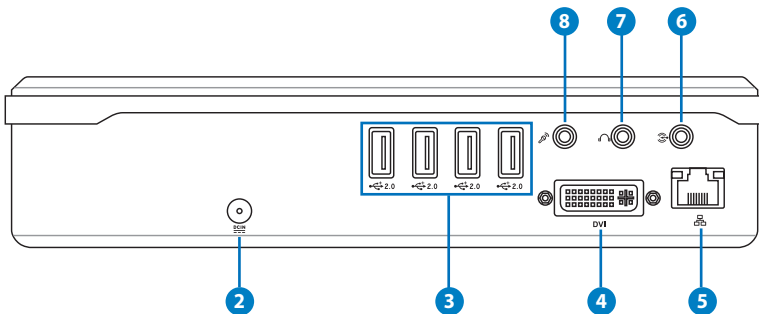


Power switch (touch-sensitive)

The power switch allows powering ON and OFF the system.

Rear view

Refer to the diagram below to identify the components on this side of the system.



2 Power (DC) input

The supplied power adapter converts AC power to DC power for use with this jack. Power supplied through this jack supplies power to the PC. To prevent damage to the PC, always use the supplied power adapter.



The power adapter may become warm to hot when in use. Do not cover the adapter and keep it away from your body.

3 USB port

The USB (Universal Serial Bus) port is compatible with USB devices such as keyboards, mouse devices, cameras, and hard disk drives. USB allows many devices to run simultaneously on a single computer, with some peripherals acting as additional plug-in sites or hubs.

4 **DVI Display output**

The Digital Visual Interface (DVI) port supports a high quality VGA-compatible device such as a monitor or projector to allow viewing on a larger external display. For D-sub connector-equipped display, use the DVI to D-Sub adapter in the package when connecting the display.

5 **LAN port**

The eight-pin RJ-45 LAN port supports a standard Ethernet cable for connection to a local network.

6 **Line in port**

Plug an 3.5mm mini-jack stereo audio cable into this jack for analog audio transfer.

7 **Headphone output jack**

The 1/8" stereo headphone jack (3.55mm) is used to connect the system's audio out signal to amplified speakers or headphones. Using this jack automatically disables the built-in speakers.

8 **Microphone jack**

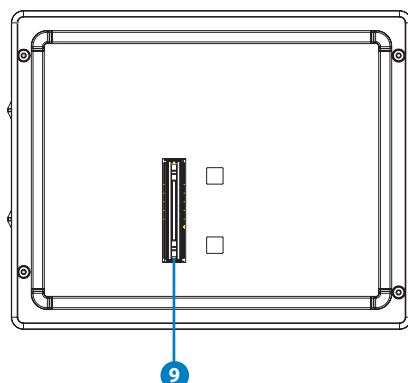
The microphone jack is designed to connect the microphone used for video conferencing, voice narrations, or simple audio recordings.

Bottom view



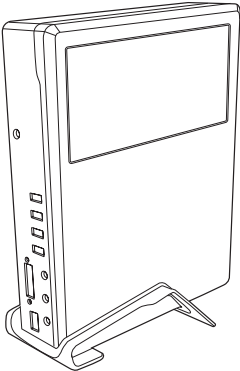

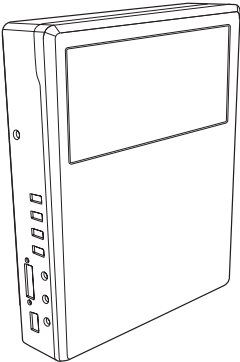

Refer to the diagram below to identify the components on this side of the system.

9 **Docking connector**

The optional docking allows future capabilities expansion to your PX10.



Positioning your PX10

	 CORRECT
	 CORRECT
	 INCORRECT



Use the support stand if you want to stack up your PX10. Stacking up the system without the support stand will hamper the ventilation and damage the system.

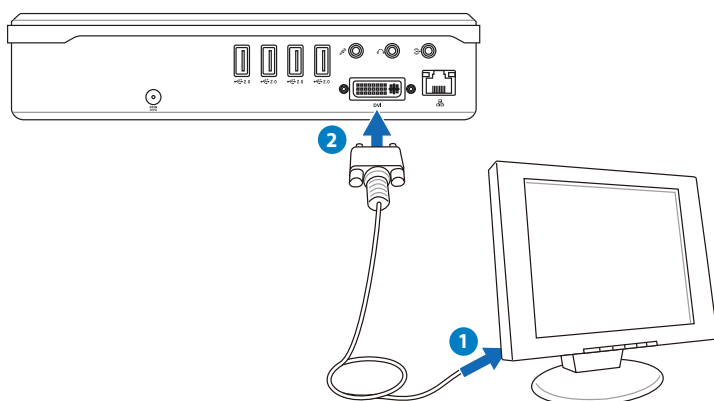
Setting up your PX10

You need to connect peripherals before starting using your PX10.

Display connection

Follow the instructions below to connect a display.

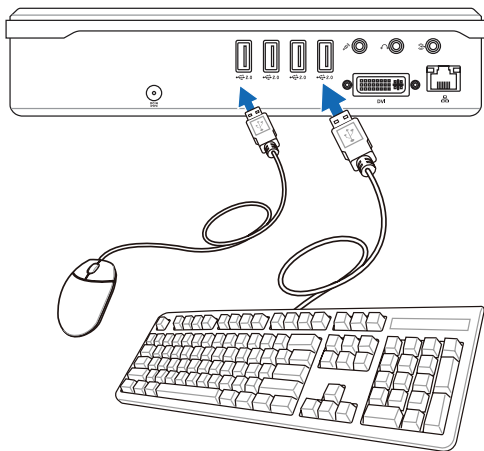
1. Connect one end of the DVI cable to the display.
2. Connect the other end of the cable to the DVI port on the rear side of system.



If your display comes with a D-Sub port, use the DVI to D-Sub adapter in the package when connecting the display.

USB devices connection

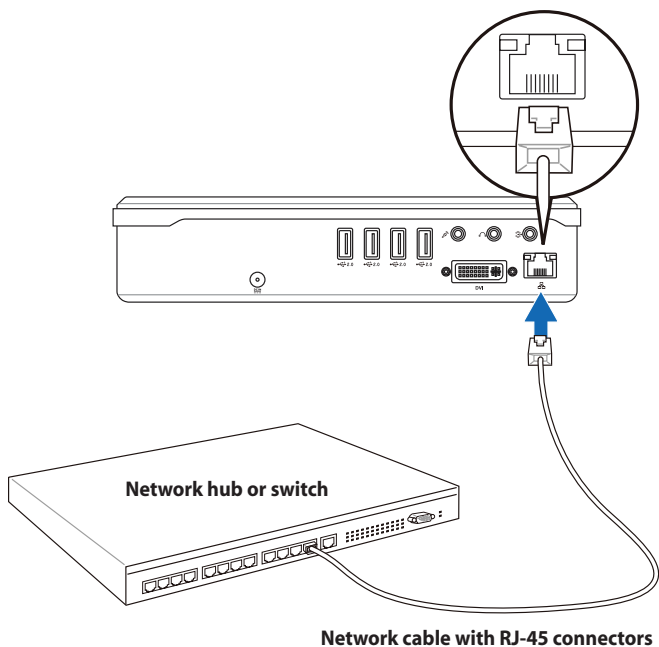
The USB port is compatible with USB devices like keyboards, mouse devices, and printers. The illustration below shows a USB keyboard and mouse connected to the system.



The package contents does not include USB keyboard and mouse. Purchase USB peripherals based on your needs.

Network connection

If you want to obtain network access, connect one end of the network cable to the network port on the system and the other end to a hub or switch. The illustration below is the example of your PX10 connected to a network hub or switch for use with the built-in Ethernet controller.



Configuring audio output

PX10 supports different types of audio configurations. You may set up the system using stereo speakers or a multi-channel audio speaker system.

Speaker configurations

You may set up the system with the following speaker configurations:

Name	Speaker system
2-channel (stereo)	Left speaker and right speaker.
5.1-channel	Two front speakers, two rear speakers, a center speaker, and a subwoofer.

Audio jack	Headphones 2-channel	5.1-channel
Light Blue	Line In	Rear
Lime	Line Out	Front
Pink	Mic In	Center/Bass



A stereo speaker set is a left-right, two channel speaker system. A multi-channel audio speaker has a left-right front and left-right rear channel, and it may include a subwoofer and a center speaker. A subwoofer provides enhanced bass sounds.



“.1” indicates a subwoofer. For instance, 5.1-channel refers to a six-speaker mode and uses two front speakers (left-right), two rear speakers (left-right), a center speaker, and a subwoofer.


Connecting to speakers

PX10 is equipped with a line-out jack (lime) that allows you to connect to stereo speakers or headphones.




There are three audio jacks enabling you to configure an up to 5.1 channel audio setup.

Refer to the table below for the audio jacks on the rear panel and their functions.

For stereo speakers or headphones

Audio jack	Description
	Connects to stereo speakers or headphones.

For a 5.1-channel speaker system

Audio jack	Description
	Connects to the FRONT jack on your subwoofer.
	Connects to the REAR jack on your subwoofer.
	Connects to the CENTER/BASS jack on your subwoofer.

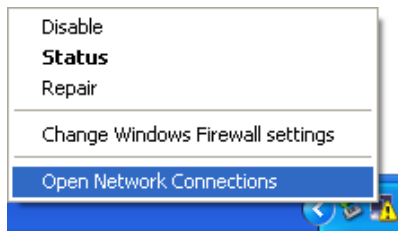
Using your PX10

Setting up a network connection

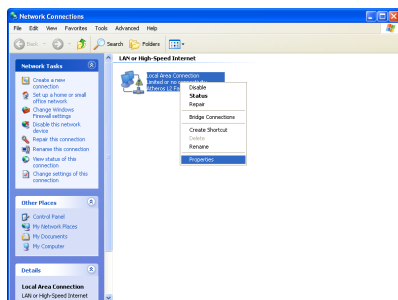
To establish a wired network, follow the instructions below:

Using a static IP

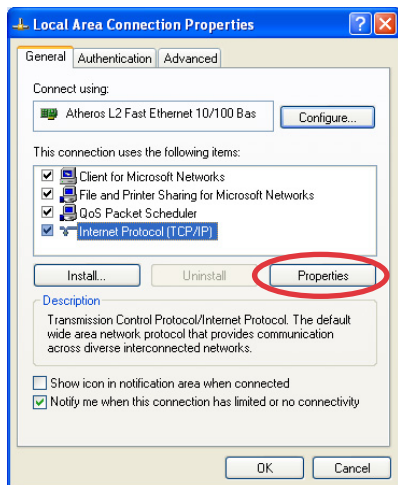
1. Right-click the network icon on the Windows® taskbar and select **Open Network Connections**.



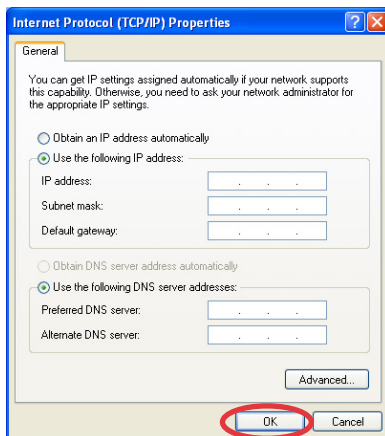
2. Right-click **Local Area Connection** and select **Properties**.



3. Highlight **Internet Protocol (TCP/IP)** and click **Properties**.

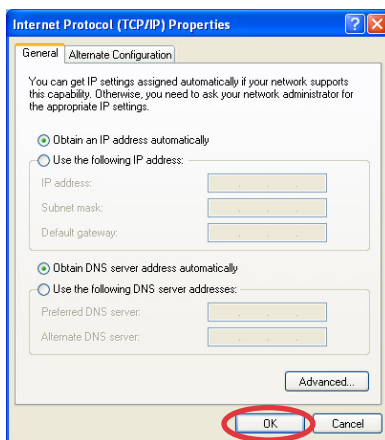


4. Select **Use the following IP address**.
5. Enter your **IP address**, **Subnet mask** and **Default gateway**.
6. If needed, enter the **Preferred DNS server** address.
7. After entering all of the related values, click **OK** to finish the configuration.

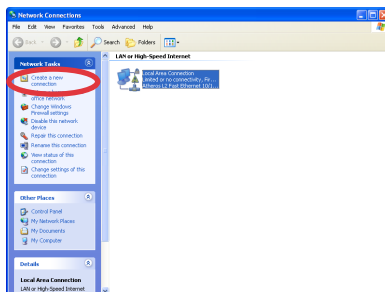


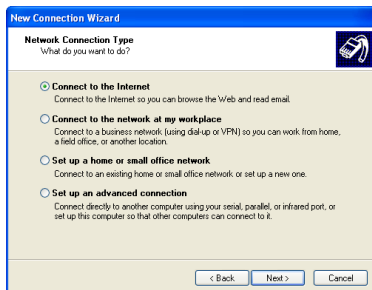
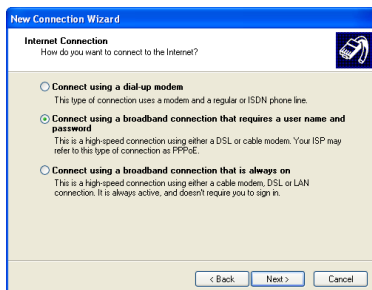
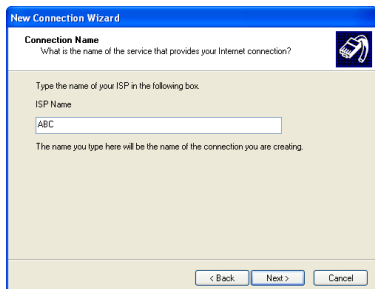
Using a dynamic IP (PPPoE connection)

1. Repeat Step 1–3 in the previous section.
2. Select **Obtain an IP address automatically** and click **OK**.



3. Click **Create a new connection** to start the New Connection Wizard.



4. Click **Next**.5. Select **Connect to the Internet** and click **Next**.6. Select **Set up my connection manually**.7. Select your connection type and click **Next**.8. Enter your ISP Name and click **Next**.9. Enter your User name and Password. Click **Next**.

10. Click **Finish** to finish the configuration.



11. Enter your user name and password. Click **Connect** to connect to the Internet.



Contact your Internet Service Provider (ISP) if you have problems connecting to the network.

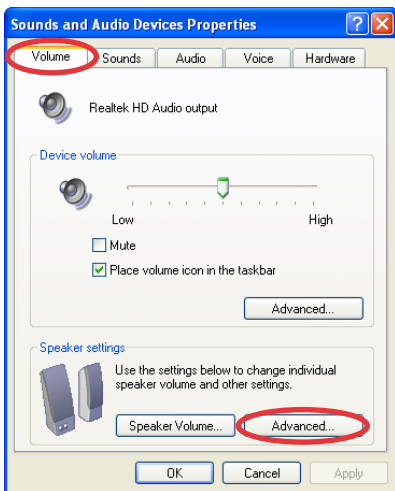
Configuring audio output settings

After connecting a speaker system to your PX10, follow the steps below to configure speaker setup:

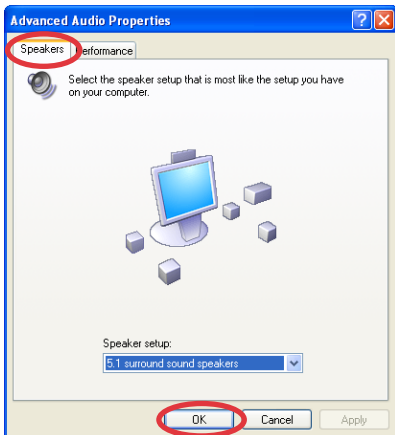
1. Right-click the volume icon on the Windows® taskbar and select **Adjust Audio Properties**.



2. Click the **Volume** tab and then click **Advanced** to configure speaker settings.



3. Click the **Speakers** tab. From the drop-down menu, select the speaker configuration you are using and click **OK**.

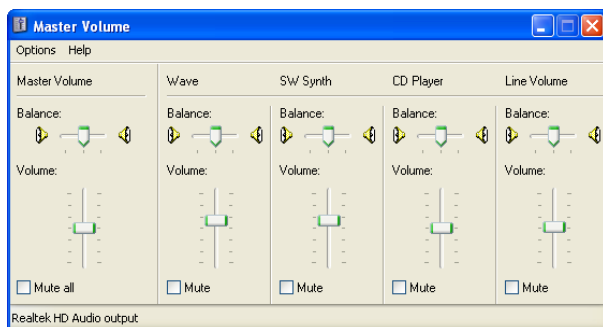


To adjust volume and audio effects:

1. Right-click the volume icon on the Windows® taskbar and select **Open Volume Control**.



2. From the control panel, adjust volume and balance according to your needs or mute the audio output.



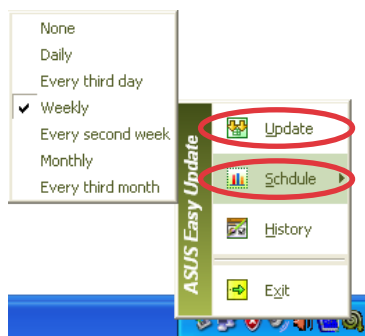
Using ASUS Easy Update

ASUS Easy Update is a software tool that automatically detects and downloads the latest BIOS, drivers, and applications for your PX10.

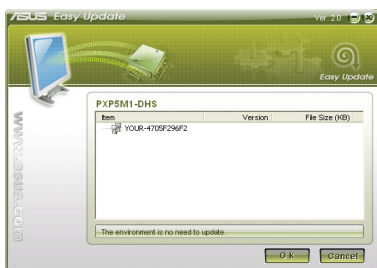
1. From the Windows® taskbar, right-click on the ASUS Easy Update icon.



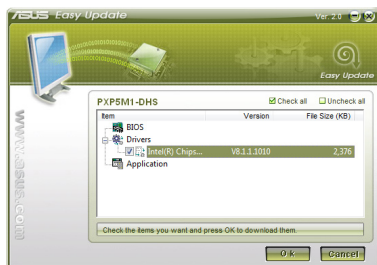
2. Select **Schedule** to set how often you want to update your system.
3. Select **Update** to activate the update.



4. Click **OK** to display the items you can download.



5. Check the item(s) you want to download, and then click **OK**.



Recovering your system

Using the recovery DVD

The recovery DVD includes an image of the operating system installed on your system at the factory. The recovery DVD, working with the support DVD, provides a comprehensive recovery solution that quickly restores your system to its original working state, provided that your hard disk drive is in good working order. Before using the recovery DVD, copy your data files (such as Outlook PST files) to a USB device or to a network drive and make note of any customized configuration settings (such as network settings).



You must connect an external USB DVD-ROM to your computer before inserting the recovery and support DVDs.

1. Turn on your computer and press **<F8>** to enter the **Please select boot device** menu.
2. Insert the recovery DVD into the optical drive and select the optical drive ("DVDROM:XXX") as the boot device. Press **<Enter>** and then press any key to continue.
3. The **ASUS Recovery System** window appears. Select where to install a new system (min. 20GB space is required). Options are:

Recover Windows to a partition

This option will delete only the partition you select from below, allowing you to keep other partitions, and create a new system partition as drive "C." Select a partition and click **NEXT**.

Recover Windows to entire HD

This option will delete all partitions from your hard disk drive and create a new system partition as drive "C." Select and click **Yes**.

4. Follow the on-screen instructions to complete the recovery process.



You will lose all your data during the system recovery. Make sure that you make a backup of it before recovering the system.

5. Insert the support DVD into the optical drive when you are asked to. After the system recovery is completed, restart the computer.
6. After the system reboots, Windows® will begin system configurations and install drivers and utilities.
7. Set up your language, time zone, keyboard, computer name, and user name to enter the Windows® OS.



This recovery DVD is for PX10 only. DO NOT use it on other computers. Visit the ASUS website www.asus.com for any updates.

Using the hidden partition

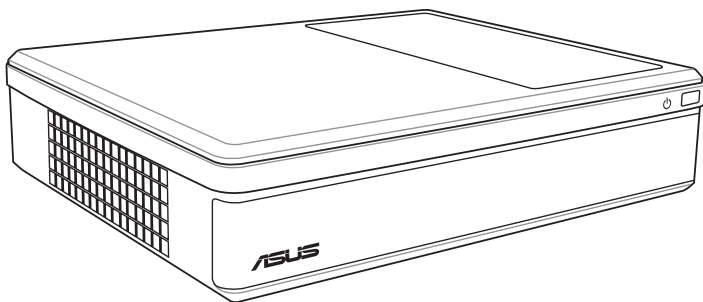
The recovery partition includes an image of the operating system, drivers, and utilities installed on your system at the factory. The recovery partition provides a comprehensive recovery solution that quickly restores your system's software to its original working state, provided that your hard disk drive is in good working order. Before using the recovery partition, copy your data files (such as Outlook PST files) to floppy disks or to a network drive and make note of any customized configuration settings (such as network settings).



DO NOT delete the partition named "RECOVERY." The recovery partition is created at the factory and cannot be restored by the user if deleted. Take your system to an authorized ASUS service center if you have problems with the recovery process.

1. Press **<F9>** during bootup (requires a recovery partition).
2. Press **<Enter>** to select **Windows Setup [EMS Enabled]**.
3. The **ASUS Recovery System** window appears. Select **Recover Windows to a partition**.
4. Select a partition with min. 20GB space and click **Next**.
5. Follow the on-screen instructions to complete the recovery process.
6. Restart the computer after the system recovery is completed.
7. Set up your language, time zone, keyboard, computer name, and user name to enter the Windows® OS.

NOVA LITE SURF EP10-Red Flag User Manual



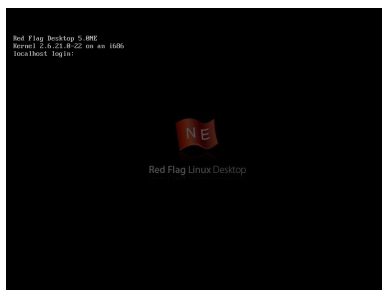
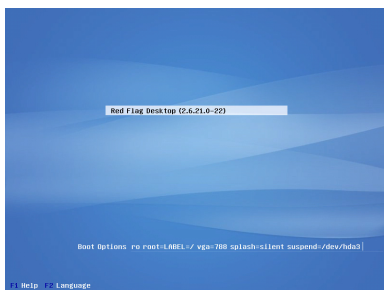
NOTE:

- *EP10-Red Flag is the PX10 model with Red Flag Linux operating system installed.*
- *To install Windows[®] XP operating system to your EP10-Red Flag, purchase an official Windows[®] XP Service Pack 2.*

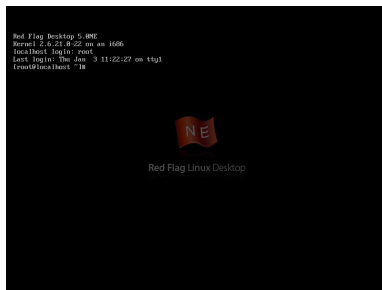
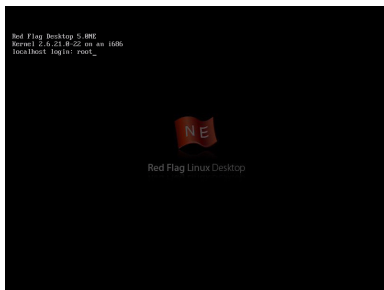
Entering Red Flag Linux OS

Your EP10-Red Flag comes with the Red Flag Linux operating system (OS). To enter the OS, follow the instructions below:

1. Turn on your computer and the following screen appears.
2. Wait for a few seconds to enter the login screen.



3. Enter "**root**" and press <Enter> to log in.
4. You have successfully entered the OS.



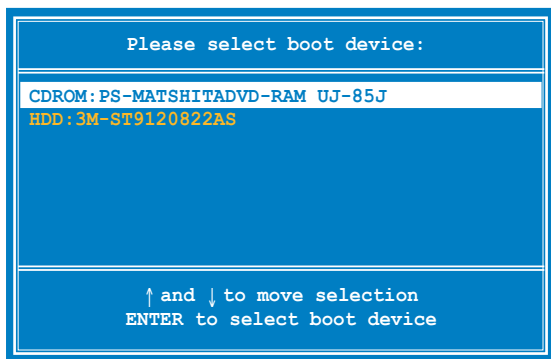
Installing Windows® XP

You can install Windows® XP operating system to your EP10-Red Flag with the official Windows® XP Service Pack 2 disc. To do so, follow the instructions below:

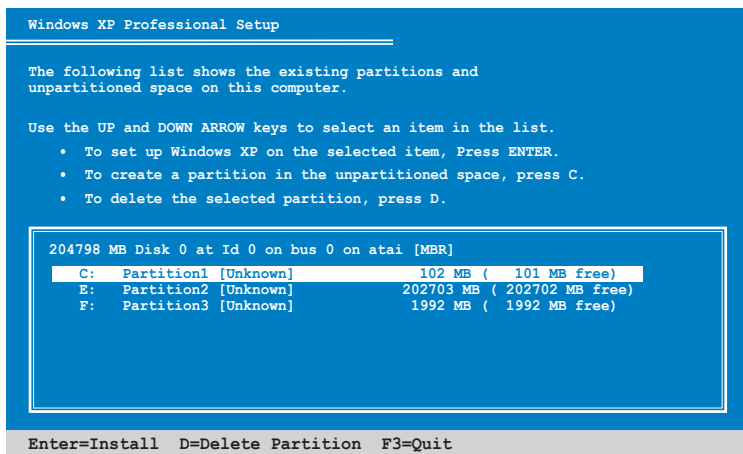


You must connect an external USB DVD-ROM to your computer before inserting the Windows® XP Service Pack 2 disc.

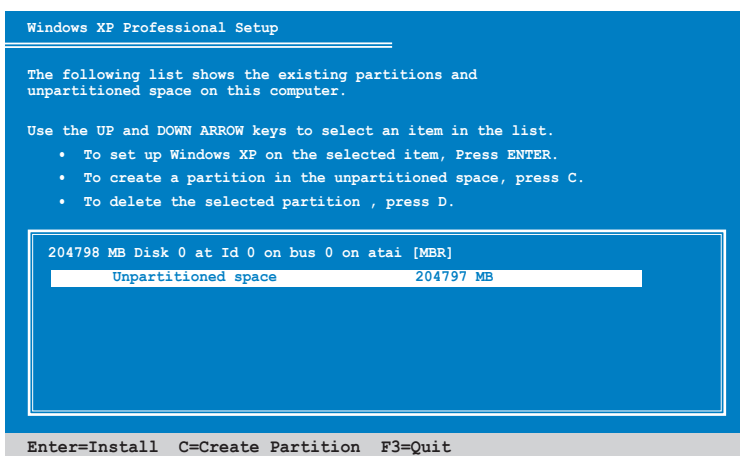
1. Turn on your computer and press <F8> to enter the **Please select boot device** menu.
2. Insert your Windows® XP disc into the optical drive and select **CDROM: XXX** as the boot device. Press <ENTER> and then press any key to continue.



3. The Windows XP Setup screen appears. Press <D> and follow the on-screen instructions to delete the existing partitions.



4. After all of the existing partitions are deleted, the unpartitioned space is shown.



5. Press <C> and then <ENTER> to create a new partition.
6. Press <ENTER> and select **Format the partition using the NTFS file system** to start formatting the partition.
7. After the formatting process ends, the Windows® XP OS setup begins.
8. When the installation is completed, restart your computer.
9. Insert the support DVD to the optical drive to install the drivers and utilities.