

**ASUS<sup>®</sup>**

# **AiGuru S2**

*Wireless Skype Phone*



E2944

First Edition V1

March 2007

**Copyright © 2007 ASUSTeK COMPUTER INC. All Rights Reserved.**

No part of this manual, including the products and software described in it, may be reproduced, transmitted, transcribed, stored in a retrieval system, or translated into any language in any form or by any means, except documentation kept by the purchaser for backup purposes, without the express written permission of ASUSTeK COMPUTER INC. ("ASUS").

Product warranty or service will not be extended if: (1) the product is repaired, modified or altered, unless such repair, modification or alteration is authorized in writing by ASUS; or (2) the serial number of the product is defaced or missing.

ASUS PROVIDES THIS MANUAL "AS IS" WITHOUT WARRANTY OF ANY KIND, EITHER EXPRESS OR IMPLIED, INCLUDING BUT NOT LIMITED TO THE IMPLIED WARRANTIES OR CONDITIONS OF MERCHANTABILITY OR FITNESS FOR A PARTICULAR PURPOSE. IN NO EVENT SHALL ASUS, ITS DIRECTORS, OFFICERS, EMPLOYEES OR AGENTS BE LIABLE FOR ANY INDIRECT, SPECIAL, INCIDENTAL, OR CONSEQUENTIAL DAMAGES (INCLUDING DAMAGES FOR LOSS OF PROFITS, LOSS OF BUSINESS, LOSS OF USE OR DATA, INTERRUPTION OF BUSINESS AND THE LIKE), EVEN IF ASUS HAS BEEN ADVISED OF THE POSSIBILITY OF SUCH DAMAGES ARISING FROM ANY DEFECT OR ERROR IN THIS MANUAL OR PRODUCT.

SPECIFICATIONS AND INFORMATION CONTAINED IN THIS MANUAL ARE FURNISHED FOR INFORMATIONAL USE ONLY, AND ARE SUBJECT TO CHANGE AT ANY TIME WITHOUT NOTICE, AND SHOULD NOT BE CONSTRUED AS A COMMITMENT BY ASUS. ASUS ASSUMES NO RESPONSIBILITY OR LIABILITY FOR ANY ERRORS OR INACCURACIES THAT MAY APPEAR IN THIS MANUAL, INCLUDING THE PRODUCTS AND SOFTWARE DESCRIBED IN IT.

Products and corporate names appearing in this manual may or may not be registered trademarks or copyrights of their respective companies, and are used only for identification or explanation and to the owners' benefit, without intent to infringe.

# Safety precautions

For your safety and to keep your phone in good operating condition, read the following tips and reminders carefully before using your phone.



Always keep the phone dry and free from dust.



Make sure that the phone is switched off before removing/replacing the battery.



Refer phone servicing only to qualified personnel.



Use only approved accessories. Do not connect incompatible products or devices.



Use the phone following the instructions in this user guide.



Refer to the **Appendix** for detailed safety notices.

# Table of contents

Safety precautions .....	iii
Table of contents .....	iv
About this guide .....	vii
Package contents .....	xi
System requirements .....	xii
Specifications .....	xii

## Chapter 1: Basic information

1.1	Phone layout.....	1-2
1.2	Battery information .....	1-4
	1.2.1 Battery power levels.....	1-4
	1.2.2 Removing and installing the battery.....	1-4
	1.2.3 Charging the battery .....	1-6
	1.2.4 Turning the phone on or off.....	1-7
	1.2.5 Display layout.....	1-7

## Chapter 2: Installing and using the AiGuru S2 Utility

2.1	Installing the AiGuru S2 Utility.....	2-2
2.2	Optimizing the AiGuru S2 Utility settings .....	2-10
	2.2.1 Status.....	2-11
	2.2.2 WiFi Music Settings .....	2-14
	2.2.3 Handset Mode Switch and WiFi Configure .....	2-16

## Chapter 3: Getting to know the phone menu and using the Skype™ features

3.1	Skype.....	3-2
	3.1.1 Making a call .....	3-2
	3.1.2 Hang up a call .....	3-5
	3.1.3 Conference call .....	3-5



# Table of contents

	3.1.4 Presence.....	3-7
	3.1.5 Skype Voicemail.....	3-8
	3.1.6 Chat Alert.....	3-10
<b>3.2</b>	<b>Call List.....</b>	<b>3-11</b>
<b>3.3</b>	<b>My Profile.....</b>	<b>3-14</b>
<b>3.4</b>	<b>WiFi Music.....</b>	<b>3-15</b>
	3.4.1 Play mode.....	3-15
	3.4.2 Sound mode.....	3-16
<b>3.5</b>	<b>Settings.....</b>	<b>3-17</b>
	3.5.1 Language.....	3-17
	3.5.2 Display.....	3-18
	3.5.3 System info.....	3-20
	3.5.4 Load Default.....	3-22

## Chapter 4: Windows® Vista™ Configuraton and Windows® SideShow™

<b>4.1</b>	<b>Installing AiGiuru S2 utility.....</b>	<b>4-2</b>
<b>4.2</b>	<b>Changing Skype Privilege Level.....</b>	<b>4-8</b>
<b>4.3</b>	<b>Setting up Wireless Music.....</b>	<b>4-9</b>
<b>4.4</b>	<b>Using Windows SideShow function.....</b>	<b>4-10</b>
	4.4.1 Windows Mail.....	4-10
	4.4.2 RSS.....	4-12

## Appendix: Reference information

<b>A.1</b>	<b>Setting PC-cillin™.....</b>	<b>A-2</b>
	PC-cillin™ 2007.....	A-5
<b>A.2</b>	<b>Setting the Windows Firewall.....</b>	<b>A-8</b>
	A.2.1 Windows XP.....	A-8
	A.2.2 Windows Vista.....	A-9

## Table of contents

A.3	Subscribing RSS feeds.....	A-11
A.4	Notices.....	A-15
A.5	Safety statements.....	A-16
A.6	Troubleshooting .....	A-23
A.7	FAQ.....	A-24
	ASUS contact information .....	A-28

# About this guide

This user guide contains the information you need to use your AiGuru S2 phone.

## How this guide is organized

This user guide contains the following parts:

### Chapter 1: Basic information

This chapter describes the phone layout, provides information about the battery including how to charge it, and basic functions such as turning the phone on/off. This chapter also describes the different layout displays of the phone.

### Chapter 2: Installing and using the AiGuru S2 Utility

This chapter provides instructions on how to install the AiGuru S2 Utility and the required device drivers. This chapter also shows you how to use the AiGuru S2 utility.

### Chapter 3: Getting to know the phone menu and using the Skype™ features

This chapter shows you how to use the phone and navigate through the Phone Menu and the Skype™ Menu.

### Chapter 4: Windows® Vista™ Configuration and Windows® SideShow™

This chapter shows you how to install, configure and use the AiGuru S2 utility under Windows® Vista™ operating system and how to use the Windows® SideShow™ features via your AiGuru S2 handset.

### Appendix: Reference information

This chapter describes PC-cillin firewall settings, RSS feeds and provides safety notices, an FAQ section, as well as ASUS' contact information.

## Conventions used in this guide

To make sure that you perform certain tasks properly, take note of the following conventions used throughout this user guide.



**NOTE:** Tips and information to aid in completing a task.



**IMPORTANT:** Instructions that you **MUST** follow to complete a task.



**CAUTION:** Information to prevent injury to yourself when trying to complete a task.



**WARNING:** Information to prevent injury to the unit when trying to complete a task.



**NETWORK DEPENDENT/SUBSCRIBED FEATURE:** The phone feature is network dependent or subscribed.

# Welcome

Thank you for choosing the **ASUS AiGuru S2 Wireless Skype Phone Kit**. It will allow you to make phone using your broadband connection. This Phone is specially designed to facilitate the manipulation of the service and features provided by Skype™.

## What is Skype™

Skype™ is free and simple software that enables you to make free calls anywhere in the world in minutes. If you are tired of paying outrageous fees for telephony, Skype™ is for you!

Skype™ is quick and easy to install. Just download it, register, and within minutes you can use the **ASUS AiGuru S2 Wireless Skype Phone** to call your friends on Skype™. Skype™ calls have excellent sound quality and are highly secure with end-to-end encryption. Skype™ is a registered trademark of Skype Technologies S.A. and all rights related to it are reserved. It is not in any way connected to ASUSTek Computer, Inc. To create an account, download the Skype™ program, and know more about this program, visit [www.skype.com](http://www.skype.com).



Skype™ is a registered trademark of Skype™ Technologies S.A. and is not in any way connected to ASUSTek Computer, Inc. To create an account, download the Skype™ program, and know more about this program, visit [www.skype.com](http://www.skype.com).

## “Get AiGuru S2 Phone convenience when you use Skype™!

Now you do not have to sit in front of your computer when you want to talk to your friends. With the Skype application running on your PC, the handset can read and display your contact list on its built-in illuminated display. Just choose who you want to talk to from the menu, press a button, and get ready to talk.

Of course, the handset supports SkypeOut™ dialing as well as your Skype contact list. The handset rings when you have a Skype™ or SkypeIn™ call coming in, and shows the caller's ID on the screen. You can hit the Mute button for privacy, or use the loud-speaker function to let everyone join in. You can put an existing call on hold and allow callers to leave a message on the answer machine, and retrieve voice mail with ease.

In short, the **ASUS AiGuru S2 Wireless Skype Phone Kit** gives you all the functionality of a regular phone, through Skype™. You get the convenience of a wireless phone and all its features, plus the high-quality voice reception that you get from Skype™ on your PC, without being tied to your computer

# Package contents

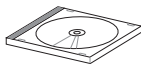
Check your phone package for the following items:



AiGuru S2 phone



Quick Start Guide



Support CD



Wireless Link USB  
dongle extension



Battery



Wireless Link USB  
dongle



USB cable

# System requirements

- PC running Microsoft® Windows® XP (SP2) / 2000 (SP4) / 32-bit Editions of Windows Vista / Home Premium / Ultimate / Business / Enterprise
- At least 1 GHz processor
- At least 256 MB RAM
- At least 40 MB free hard disk drive space
- Internet connection: Dial-up, broadband, or cable modem (at least 33.6 Kbps)



We recommend a broadband connection. Voice quality may vary depending on the connection speed.

- Skype™ version 3.0.0.198 recommended (bundled in the support CD)

## Specifications

<b>Dimension</b>	116(L) x 47(W) x 12.3(H) mm
<b>Weight</b>	100 g
<b>Wireless standard</b>	IEEE 802.11 b+g @11/54 Mbps, 2.4 GHz, with auto-fallback and auto-channel selection
<b>I/O</b>	128 x 128 Dot matrix color STN LCD 0.5 W Speaker Receiver Mini USB port 2.5 mm 2-channel Earphone jack
<b>Keypad</b>	Alphanumeric keys End key Call key Navigation keys Right soft key Left soft key Asterisk key

*(Continued on the next page)*



# Specifications

<b>Features</b>	Skype™, SkypeIn™, SkypeOut™, Skype™ Conference support Contacts list, call list Search Call rejecting, call receiving, call redial, hold Hands-free speaker out Caller ID display
<b>Operating distance</b>	Indoors: 30 m* Outdoors: 100 m*
<b>Power duration</b>	Li-ion 3.7 V 750 mAH, 25 hours standby, 2.5 talk hours
<b>Charging</b>	3 hours USB full charging
<b>Wireless receiver</b>	Wireless Link dongle (UI) mounted on the PC or notebook
<b>Software to install</b>	AiGuru S2 Utility Wireless Link dongle driver
<b>Accessories</b>	Support CD Quick Start Guide Battery USB cable Wireless Link dongle Wireless Link dongle 3D 360° USB extension



\* According to free space test. The operating distance may be shorter or interfered if there are walls, barriers, or interferences in the home layout or operating environment.



# Chapter 1

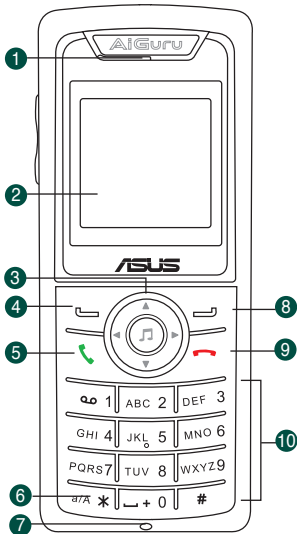
## *Basic information*

*This chapter describes the phone layout, provides information about the battery including how to charge it, and basic functions such as turning the phone on/off. This chapter also describes the different layout displays of the phone.*

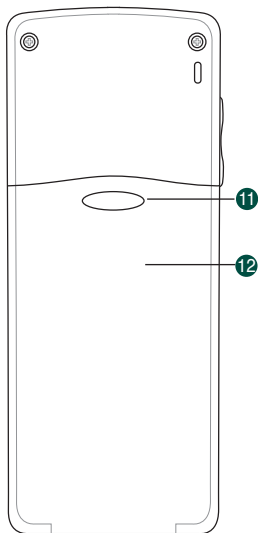


# 1.1 Phone layout

Front view



Back view

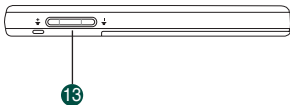


1. **Earpiece/Speaker**
2. **LCD screen.** Displays information such as time, battery status, signal strength, and menus.
3. **Navigation keys.** Allows you to navigate menu lists and functions as a shortcut.

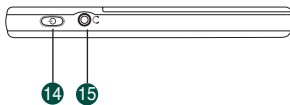
**Up:** Skype Presence  
**Down:** Skype Contacts  
**Left:** Skype Menu  
**Right:** Missed Call list  
**Middle:** WiFi Music

- Left soft key.** Allows you to perform the function indicated on the bottom left corner of the screen.
- Call key.** Initiates a call.
- Asterisk key.** Holds to change the input modes. Toggles between numeric and alpha modes.
- Microphone**
- Right soft key.** Allows you to perform the function indicated on the bottom right corner of the screen.
- End key.** Terminates a call.
- Alphanumeric keypad.** Allows you to enter numbers, letters, and symbols.
- Battery latch.** Secures the battery cover to the phone.
- Battery cover.** Covers the battery.

### Side view (left)

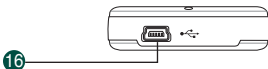


### Side view (right)



- Volume adjustment buttons.** Adjusts the phone volume.
- Power button.** Turns the phone on or off.
- Earphone jack.** Connects an earphone.

### Bottom view



- USB B type connector.** Connects a USB B series plug to charge the phone battery and configure the phone.

## 1.2 Battery information

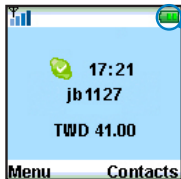
A rechargeable battery powers the AiGuru S2 Wireless Skype Phone. Make sure that the battery is fully charged to prevent interrupted communications due to power loss.



Fully charge the lithium ion battery before first use and whenever it is depleted to prolong battery life.

### 1.2.1 Battery power levels

The battery icon on the LCD screen helps you keep track of the remaining battery power so you will know when you need to charge the battery. Note the battery icon indicating the battery power levels.



Icon	Indication
	Battery is 55% to 100% full.
	Battery is 25% to 55% full.
	Battery is 10% to 25% full.
	Turning red. Battery has no power. Charging is required.

### 1.2.2 Removing and installing the battery

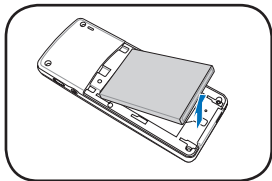
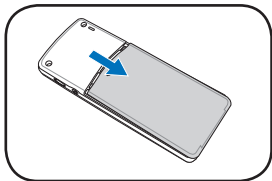
The rechargeable battery comes installed in the AiGuru S2. In the future, you may need to replace the current battery. Follow the instructions in this section to remove and install the battery if needed.



Before removing or installing the battery, make sure the phone is turned off and not connected to a USB cable.

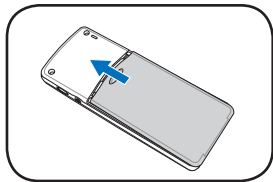
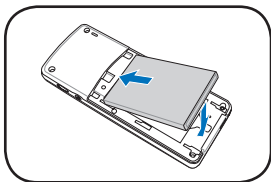
To remove the battery:

1. Push the battery cover latch in the direction of the arrow until the battery cover disengages from the phone. Lift the cover then set it aside.
2. Upwardly lift the battery and set it aside.





To install the battery:

1. Place the battery into the battery compartment noting the correct polarity.
2. Slide the battery cover in the direction of the arrow until the latch snaps in place.



## 1.2.3 Charging the battery

### Low battery indicator

The battery indicator  (green) on the upper left corner of the screen indicates how much charge remains in the battery. When the battery indicator shows  (red), you need to recharge the battery. Charge the battery through the USB cable.

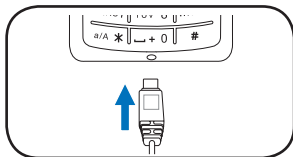


To know the charging status of the phone, note the LED color on the upper left corner of the handset. Refer to the table below.

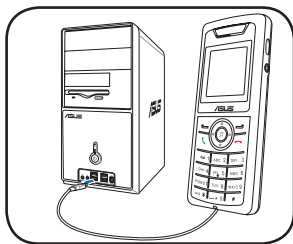
Color	Indication
Orange (blinking)	Battery charging
Green (blinking slowly)	Idle mode (backlight is off)
No color (LED off)	Phone in use

### USB direct charging

1. Connect the USB Series B plug (with the squarish end) to the port at the bottom of the phone.
2. Connect the USB Series A plug (with the flat rectangular end) to a USB 2.0 port on your computer.



Make sure your computer is turned on. For the best battery performance, make the battery charge and discharge completely the first few times you use it. For some PC, USB ports may fail to deliver enough power to the devices connected to them. When using S2, connecting your S2 and the dongle to neighboring USB ports is not suggested.

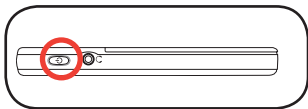




## 1.2.4 Turning the phone on or off

To turn the phone on or off:

1. Locate the power button on the right side of the phone.
2. Press the power button for a few seconds until the display turns on or off.

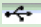


## 1.2.5 Display layout

### Idle mode

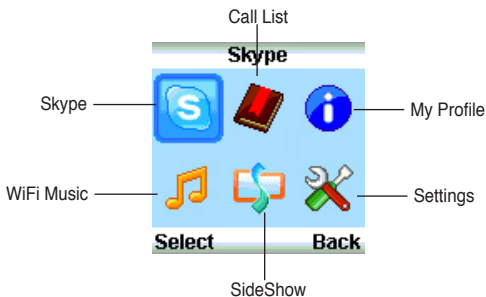
The phone is in idle mode when it is ready for use and you have not performed any action.



When you switch to USB Mode, the WiFi Signal strength indicator will change to . Refer to 2.2.3 for detailed information on handset mode switch.

## Main menu

After you press the left soft key, the main menu appears. You can navigate to **Skype**, **Call List**, **My Profile**, **Settings**, **WiFi Music** to use all the functions or configure the settings.



When you log off Skype, switch to USB Mode, or disconnect the connection, some icons in the main menu will be grayed out.



The SideShow icon is only available under Windows Vista system and the functions available will vary depending on the Windows Vista. If your operating system is Windows XP, this item will be unavailable.

## Chapter 2

# *Installing and using the AiGuru S2 Utility*

*This chapter provides instructions on how to install the AiGuru S2 Utility and the required device drivers. This chapter also shows you how to configure the phone and Wireless Link USB dongle.*



## 2.1 Installing the AiGuru S2 Utility

Before using your AiGuru S2 Wireless Skype Phone, you need to install the AiGuru S2 Utility. This utility allows you to take full advantage of your phone's features.

### Requirements for installing the AiGuru S2 utility:

1. Windows® XP (SP2) / 2000 (SP4) / 32-bit Editions of Windows Vista / Home Premium / Ultimate / Business / Enterprise
2. At least 1 GHz processor
3. At least 256 MB RAM
4. At least 40 MB free hard disk drive space
5. Internet connection: Dial-up, broadband, or cable modem (at least 33.6 Kbps)
6. Skype™ account
7. Microsoft® DirectX 9.0c
8. Wireless Link USB dongle
9. AiGuru S2 support CD



Consult the Internet Service Provider(ISP) for detailed information about network setting.

## To install the AiGuru S2 Utility:

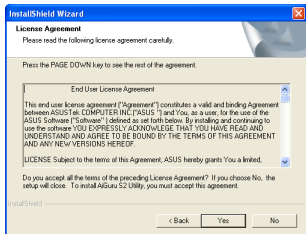
1. Place the AiGuru S2 support CD in the optical drive.

The AiGuru S2 Control Panel appears. Click **Install AiGuru S2 Utility**.

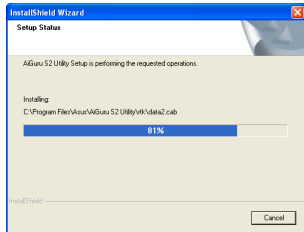


If the AiGuru S2 Utility installation does not run automatically, click **Browse Support CD**, then double click **Setup.exe** to run the installation or readme for help.

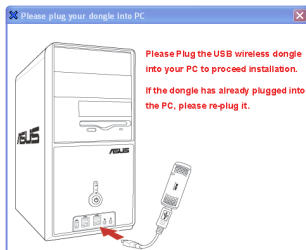
2. Click **Yes** to start installation when the InstallShield Wizard appears.



3. When the installation begins, the **Setup Status** window indicates the progress of installation.



4. This screen appears when installation is completed. Refer to the following description to connect the Wireless Link USB dongle to your PC.

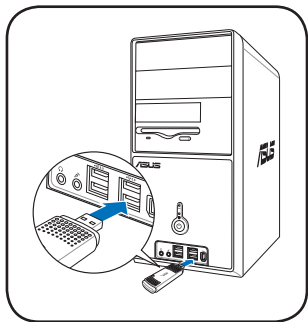


Installation can not proceed if the Wireless Link USB dongle is not connected to your PC.

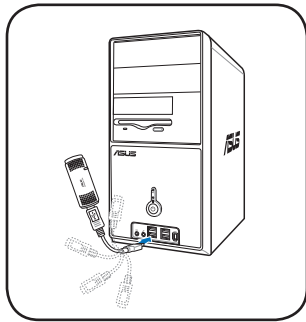
### To connect the Wireless Link USB dongle:

You may plug the Wireless Link USB dongle to your PC directly or connect it to your PC with the Wireless Link USB dongle extension. See the pictures below:

Method 1:



Method 2:





The Wireless Link USB dongle extension comes with the handset. You can adjust it up to 360° to get better signal.



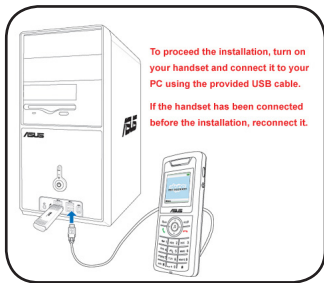
The Wireless Link USB dongle is a thumb-sized device that creates a wireless network using the IEEE 802.11g wireless standards. The device allows wireless communication between your computer and your phone using USB 2.0 connectivity, giving you the convenient access to the Skype™ program and control of the AiGuru S2 Utility.

1. Installation proceeds when you connect the Wireless Link USB dongle to your PC.

Now searching for Hardware and installing Drivers

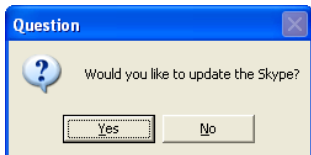
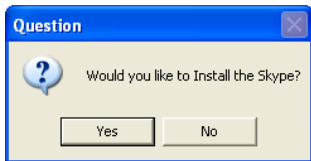
0%

2. This screen appears when installation is completed. Turn on your handset and connect it to your PC using the provided USB cable.



## To install Skype™:

1. A dialogue box opens, asking if you would like to install or update the Skype™ program. Click **Yes** to install the program.



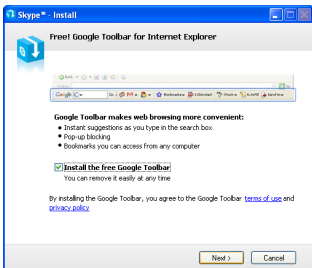
We recommend you install the program in the Support CD or the programs suggested in ASUS website.

2. The Skype™ Setup Wizard appears and leads you to finish the installation. Select the language to use first.
3. Read the License Agreement and then click the box, then click the **Install** button to install.

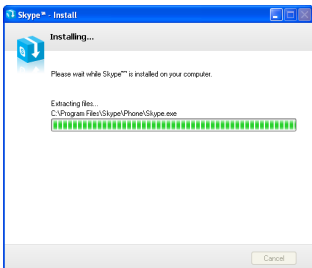




4. If you want to install the free Google Toolbar please click the box before **Install the free Google Toolbar**, then click the **Next** button.



5. Installation proceeds.

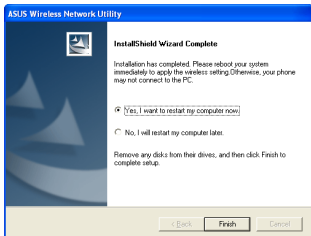


6. This screen appears when installation is completed. Click the **Start Skype**.

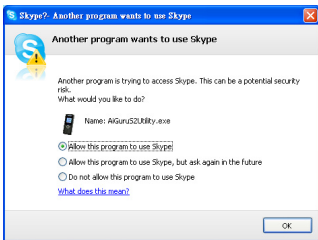


## To continue AiGuru S2 Utility installation

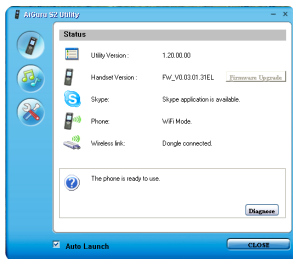
1. **InstallShield Wizard** appears after you finish Skype installation. Select **Yes, I want to restart my computer now** and click **Finish**.



2. After restarting the computer, when you log in to Skype, a prompt appears. Select **Allow** this program to use Skype and click **OK**. The AiGuru S2 utility will be ready to use.



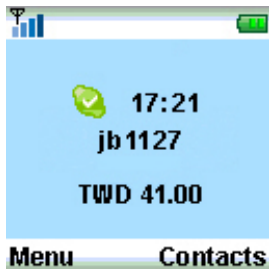
3. The warning message appears on the utility screen, if the phone and the Wireless Link USB dongle are not connected to your PC, or the Skype application is not initiated. The warning messages disappear when everything is ready.



- Click the third button on the left to check if the WiFi configure is correct.



- When the configuration succeeds, the handset displays the information as the right picture, and is ready to use.




If the **connection** fails, place the handset close to the Wireless Link USB dongle and try again.

**jb1127** on the phone display is the skype account name and it varies according to the user.

## 2.2 Optimizing the AiGuru S2 Utility settings


After installing the AiGuru S2 Utility and Wireless Link USB dongle device driver, it is time to customize the settings to optimize the features of your phone.

To launch the AiGuru S2 Utility:



1. Turn on your phone.
2. Connect the Wireless Link USB dongle to your computer.
3. Start your computer.
4. Launch the Skype application and log in to your skype account.
5. Launch the AiGuru S2 Utility by double-clicking the AiGuru S2 Utility icon (with the image of this phone  on your desktop or the taskbar.
6. The AiGuru S2 Utility main screen appears. Refer to the following section for details on how to customize the AiGuru S2 Utility.

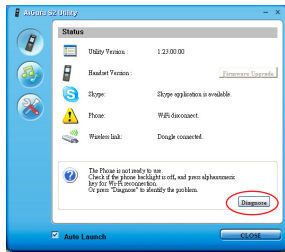


## 2.2.1 Status

Click the  button on the left to display the phone status.


AiGuru S2 utility will auto-detect the phone status, as shown in the picture on the right.

 is a warning message, indicating the Skype application is not initiated or the phone or the Wireless Link USB dongle is not detected. If  icon appears, click the **Diagnose** button to find out the problem.



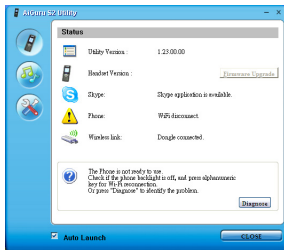
Item	Message
Utility Version	Displays the utility version you are using.
Handset Version	Displays the handset version. You can update the handset firmware by connecting the handset to the computer and click the Firmware Upgrade button.
Skype	Skype application is (not) available.
Wireless Link	Dongle (not) connected
Phone	Displays the mode you are in, WiFi Mode or USB Mode. Also it tells the handset is connected through the USB cable or not.

## Wi-Fi Disconnect

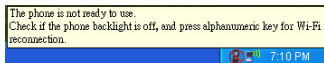
If the triangle warning icon  appears before **Phone** on the left pane of the control panel, there is a Wi-Fi connection failure. Follow the instructions below to solve the connection problem.

To rebuild Wi-Fi connection:

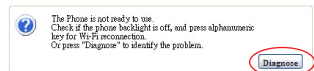
1. Make sure your Skype application has been initiated and the wireless link donlge is connected. (No warning icons before both items)



2. Move the mouse cursor to the AiGuru S2 icon on the Windows OS taskbar and it pops out the same message shown on the control panel.

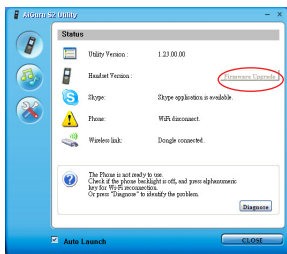


3. Press the alphanumeric keypad for Wi-Fi reconnection directly or click the **Diagnose** button on the control panel to identify the problem.

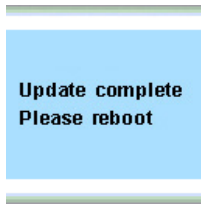
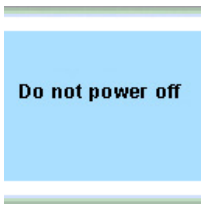


## Firmware upgrade

Follow the instructions below for firmware updating.



1. Connect your handset to your PC through the providing USB cable and click the **Firmware Upgrade** button to apply the latest firmware for your handset.
2. The warning message appears **Do not power off**.
3. After the process is complete, follow the instruction to reboot the handset.




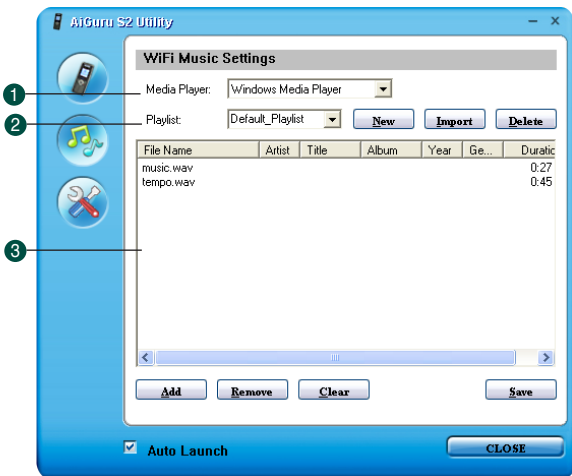
During the firmware updating, turning the handset off or removing the USB cable will seriously damage the handset.



Update the firmware to obtain the best performance and stability.

## 2.2.2 WiFi Music Settings

Click the  button on the left to open the **WiFi Music Settings** screen and to select the playlist you would like to listen to on your phone.



1. **Media Player:** Allows you to choose the media player you want from the drop-down menu. AiGuru S2 Utility supports Windows Media Player and iTunes.

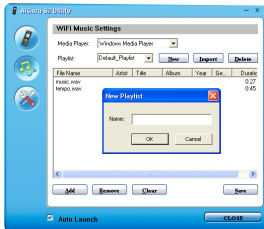


iTunes has compatible problem with Windows Vista operating system. If you are using Windows Vista operating system, the iTunes will be unavailable in the drop-down menu.

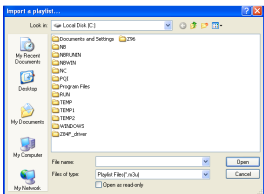


2. **Playlist:** Allows you to create a new playlist, import an existed playlist that created from the AiGuru S2 utility, or delete an unwanted playlist.

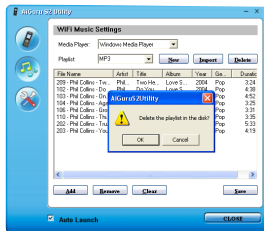
**Create new playlist:** Click the button **New**, and enter the new playlist name in the dialogue box.



**Import a playlist:** Click the button **Import**, and the Import a playlist screen appears. Locate the playlist you created earlier or the playlist you want to import and click **Open**.




**Delete a playlist:** Click the button **Delete**, and a dialogue box appears, asking for confirmation. Click **OK** to delete the playlist in the disk.



3. **Playlist content:** Allows you to easily drag and drop songs onto the list. You can also use the button below to add and remove a song from the list or clear the whole playlist at a time. Click the button **Save** to save your customized setup.

## 2.2.3 Handset Mode Switch and WiFi Configure



Click the  button on the left to open the **Handset Mode Switch and WiFi Configuration** screen.



### Handset Mode Switch

You can switch between WiFi Mode and USB Mode. The function of WiFi Music will be disabled when you are in USB mode.

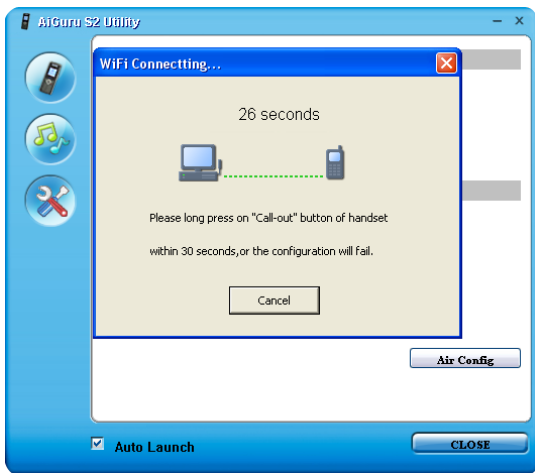


When you switch between WiFi Mode and USB Mode, please don't unplug the handset until the configuration completed.

## WiFi Configure

After the installation of AiGuru S2 utility and the Skype application, the handset should be ready to use. The system will automatically detect your phone setting if you restart your computer or replug the Wireless Link USB dongle.

You need to click the **Air Config** button to reset the phone if you connect the phone to another computer or the IP address of your computer changes. You have to configure your phone and the AiGuru S2 utility. Make sure you've connected the dongle to your computer and the handset is turned on. Click the button Air Config and hold the Call Key of the handset simultaneously. If the **Air Config** fails, refer to **2.2.1 Status** to diagnose the problem.





# Chapter 3

## *Getting to know the phone menu and using the Skype™ features*

*This chapter shows you how to use the phone and  
navigate through the Phone Menu and the Skype™ Menu.*



## 3.1 Skype

Your AiGuru S2 phone allows you to receive or make skype phone calls while you are away from your computer, within the operating range of the WLAN module

### 3.1.1 Making a call



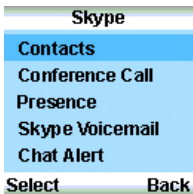
Before using your AiGuru S2 Wireless Skype Phone, make sure you have installed the AiGuru S2 Utility and configured the required settings. Do not quit the utility while you are signed in to Skype™. Refer to Chapter 2 for details.

### Using an entry in the Contact List:



To make a call to a mobile phone or land line using SkypeOut™, you need to purchase credits. Visit the Skype™ website at [www.skype.com](http://www.skype.com) for details.

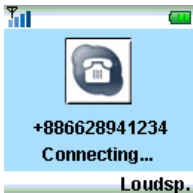
1. From the idle screen, press the left soft key to display the main menu. and select **Skype** > **Contacts**. Or, press the right soft key to display the contacts directly.
2. The contact list appears, sorted by SkypeOut number and Skype contacts.



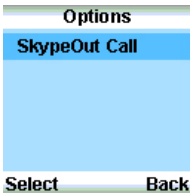
The phone book on your phone only displays the contacts saved in your Skype account.

3. **For SkypeOut number:**

1. Scroll up/down to choose the SkypeOut number you want to call, and then press the **Call Key** to make the connection directly.



2. Or press the left soft key (**Options**) to **SkypeOut Call**.

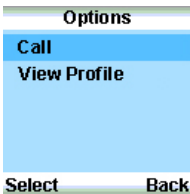


**For Skype contact:**

1. Scroll up/down to choose the contact you want to call, and then press the **Call Key** to make the connection directly.



2. To do it otherwise, press the left soft key (**Options**) to **Call**.



3. Also, you can SkypeOut your contact's other phone numbers in the **View Profile** menu. Scroll up/down to select the wanted number and press the left soft key (**SkypeOut**) or press the **Call Key** directly.

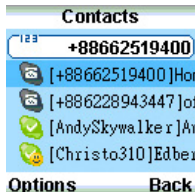
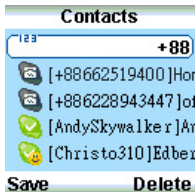


## Searching a contact in the Contact List:

When making a call, you can search a wanted contact in the contact list with the keypad. It is faster and saves your time to make a skype phone call.

### Search a contact by phone numbers:

1. Key in the phone number with the keypad. The screen will display the suggested contacts with each keystroke.
2. Scroll up and down through the possible contacts and select the contact you want.



3. Follow the instructions on the previous pages to initiate the call.

### Search a contact by names:

1. Key in the contact's name with the keypad. The screen will display the suggested contacts with each keystroke.
2. Scroll up and down through the possible contacts and select the contact you want.



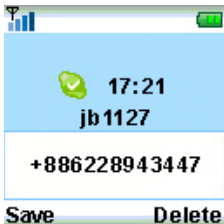
3. Follow the instructions on the previous pages to initiate the call.



## Using the numeric keypad:

To make a call using the numeric keypad:

1. From the idle screen, press the “0” key twice to input “+” sign and dial the telephone number you want to connect.
2. Press the left soft key (**Save**) to save the number; otherwise, press the right soft key (**Delete**) to delete the entry one by one.
3. Press **End Key** to delete all entries and return to the idle screen. Or, press the **Call Key** to make the connection.

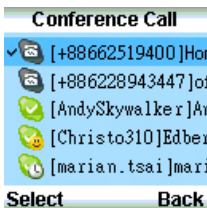
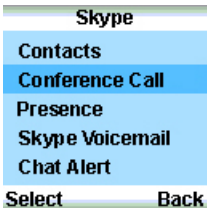


### 3.1.2 Hang up a call

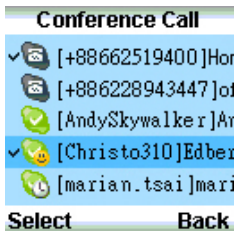
When you are done with the phone conversation, press **End Key** to terminate the call.

### 3.1.3 Conference call

1. From the idle screen, press the left soft key to display the main menu, and select **Skype > Conference call**.
2. From the **Conference Call** screen, press the left soft key to select the conference participant. A check mark appears before the contact's name or the SkypeOut number. Press twice to unselect the participant.



3. Repeat the previous steps to add more conference participants.
4. Press **Call Key** to start the connection.



A conference call can include maximum one host and four participants. You have to unselect a participant before you add another new one if the participant number exceeds the limit.

5. When you are done with the phone conversation, press **End Key** to terminate the call.



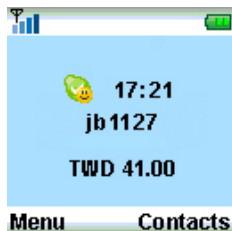
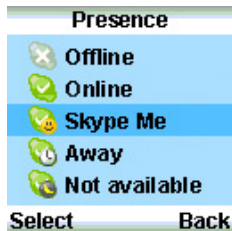
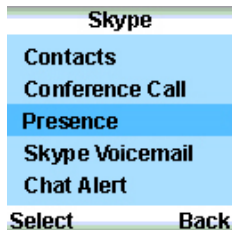
During the call, you can switch between **Loudspeaker** mode and **Handset** mode for Handsfree function, or **Mute** the microphone so that others cannot hear you.

During a call, you can press **Hold** to hold the call and **Unhold** to continue. If there is another incoming call, press **Switch call** to switch between two calls. However, the function of holding a call is unavailable in a conference call.

### 3.1.4 Presence

You can change your Skype status through the handset remotely.

1. From the idle screen, press the left soft key to display the main menu and select **Skype > Presence**.
2. Scroll up/down to choose the Skype status you want, and press the left soft key (**Select**) too make a confirmation, **Offline**, **Online**, **Skype Me**, **Away**, **Not available**, **Do not disturb** or **Invisible**.
3. After the selection, the idle screen displays as shown.



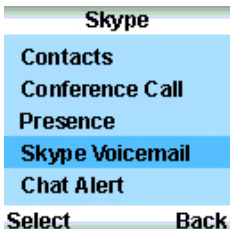
When you switch your status to **Offline**, some Skype functions will be disabled, such as making calls.

### 3.1.5 Skype Voicemail

You can download and listen to your Voicemail, or delete the Voicemail in a few steps.

#### Play a Voicemail:

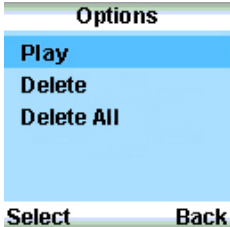
1. From the idle screen, press the left soft key to display the main menu and select **Skype > Skype Voicemail**.



2. Use the navigation keys to find the Voicemail you want from the list

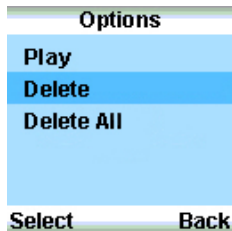


3. Press the left soft key (**Options**) and select **Play**.

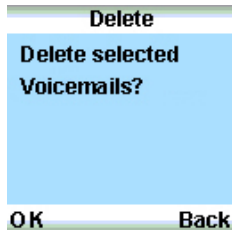


## Delete a/all Voicemail(s):

1. From the idle screen, press the left soft key to display the main menu and select **Skype > Skype Voicemail**.
2. Use the navigation keys to locate the Voicemail you want to delete from the list.
3. Press the left soft key (**Options**) and select **Delete**.




4. A message appears, asking for confirmation. Press the left soft key (**OK**) to delete the selected Voicemail.



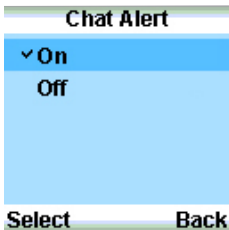
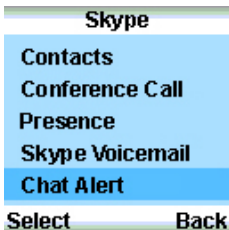
5. To delete all Voicemails, repeat the previous instructions and select **Delete All** to clear all Voicemails.


## 3.1.6 Chat Alert

After activating **Chat Alert** function, an  icon will appear on your handset display to remind you of an incoming text message on your PC with a beep when you are away chatting via AiGuru S2.

### To activate or inactivate Chat Alert:

1. From the idle screen, press the left soft key to display the main menu and select **Skype > Chat Alert**.
2. Use the navigation keys and the left soft key to select **On** to start **Chat Alert** or **Off** to stop this function.



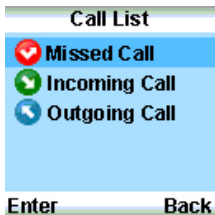
After the text message is read, the  icon on your handset display will disappear.

When this function is disabled, there will be no reminder icon and alerting beep if a text message is coming to your PC.

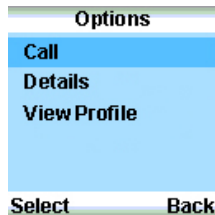
## 3.2 Call List

Displaying the Missed Call, Incoming Call, and Outgoing Call, the Call List menu is convenient for you to trace the history of all kinds of calls.

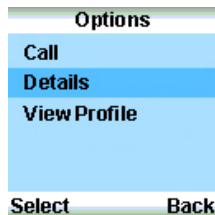
1. From the idle screen, press the left soft key to display the main menu and select **Call List**.
2. Use the navigation keys to highlight the type of call history you want to browse and press the left soft key to **Enter**.



3. Select a Missed/Incoming/Outgoing call entry and press the left soft key to call back.



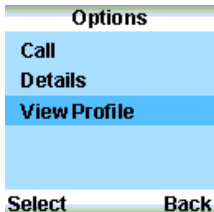
4. Or highlight **Details** and press left soft key to check the call details.



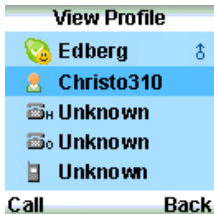
5. The information about the call will be displayed as shown.



6. Or highlight **View Profile** and press left soft key to view the caller or the recipient's profile.



7. The profile of the caller or the recipient will be displayed as shown.





## Missed call alert

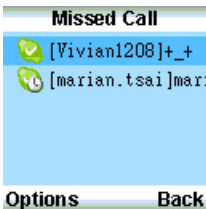
When there is a missed call, the handset display will alert you with a missed call message.

To clear the alert message:

1. From the idle screen, press the left soft key to display the main menu, and select **Call List > Missed Call**.



2. The screen will display the callers.



3. Follow the instructions on previous pages to call back, check the call details or view the caller's profile.
4. After you return back to the idle screen, the missed call alert message is removed.

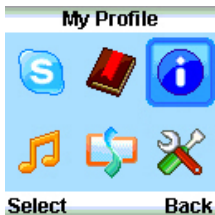


When you checked the missed call, the call in the Missed Call will be moved to Incoming Call.

## 3.3 My Profile

My Profile menu lists detailed profile of your Skype account.

1. From the idle screen, press the left soft key to display the main menu and select **My Profile**.



2. Scroll up and down using the navigation keys to view the profile.




3. Press the left soft key to **SkypeOut** to the phone number in your profile.

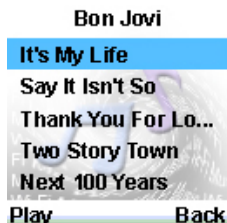


You are not allowed to make a Skype call to yourself. While browsing this menu, you can only SkypeOut to your home number, office number, or your mobile phone number.

## 3.4 WiFi Music

Your AiGuru S2 phone can function as a Windows Media Player or iTunes remote controller, allowing you to play audio files while you are away from your computer, within the operating range of the WLAN module.

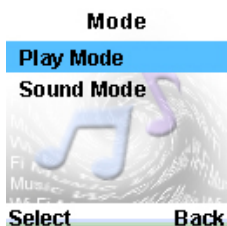
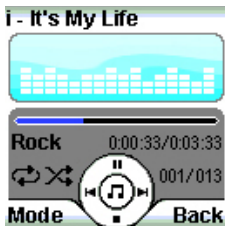
1. From the idle screen, press the left soft key to display the main menu and select **WiFi Music** or press  key to enter WiFi Music directly.
2. The handset screen will display the song list you select in your AiGuru S2 PC utility. Press the left soft key to start enjoying the music.



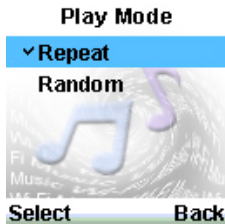
### 3.4.1 Play mode



You are able to switch the play mode to **Repeat** and **Random**.

1. From the playback screen, press the left soft key (**Mode**).
2. From the **Mode** menu, highlight **Play Mode** and press the left soft key (**Select**) to confirm.



- From the **Play Mode** menu, select **Repeat** to repeat the whole playlist or **Random** to shuffle the play order. You can activate these two mode together.

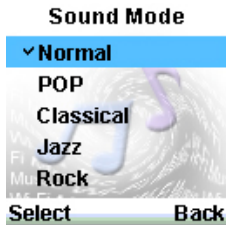
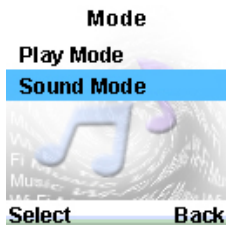


- After the repeat or the random mode is selected, the repeat icon  or the random icon  or both of them will appear on the playback screen.

### 3.4.2 Sound mode

The WiFi Music function of AiGuru S2 provides different sound modes for the music playing. You can change the mode to suit the music genre or your mood.

- From the playback screen, press the left soft key (**Mode**).
- From the **Mode** menu, highlight **Sound Mode** and press the left soft key (**Select**) to confirm.
- From the **Sound Mode** menu, highlight a mode and press the left soft key (**Select**) to confirm.



- After the selection, the sound mode will appear on the playback screen.



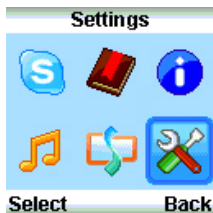
The WiFi Music functions only in the WiFi mode.

## 3.5 Settings

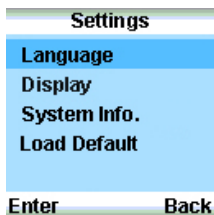
In the Settings menu, you can configure settings of AiGuru S2 wireless skype phone, including language, display, keypad lock, or you can restore to the default setting.

### 3.5.1 Language

1. From the idle screen, press the left soft key to display the main menu and select **Settings**.



2. From the **Settings** screen, select **Language** and press the left soft key to **Enter**.



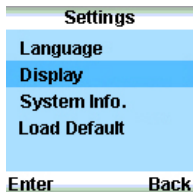
3. The **Language** screen opens, and you can highlight the language you want to use. Press the left soft key (**Select**) to confirm.



## 3.5.2 Display

### Backlight Time

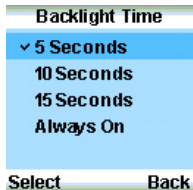
1. From the idle screen, press the left soft key to display the main menu and select **Settings**.
2. From the **Settings** screen, select **Display** and press the left soft key to **Enter**.



2. Highlight **Backlight Time** and press the left soft key to **Select**.



3. From the Backlight Time menu, you can select a screen backlight time and press the left soft key to **Select**.



Unless you set the backlight time to **Always On**, the handset display darkens when the backlight time is up and blackens after 30-second idle to minimize battery energy consumption. Press any key to light up the display.



The display will not blacken under three conditions: (1) the handset is connected to the PC and charging, (2) during a call, and (3) the WiFi Music is functioning.

## Brightness

1. From the idle screen, press the left soft key to display the main menu and select **Settings**.
2. From the **Settings** screen, select **Display** and press the left soft key to **Enter**.
3. Highlight **Brightness** and press the left soft key to **Select**.



4. Use the navigation keys to adjust the value. Scroll right to increase the brightness and left to decrease the brightness.



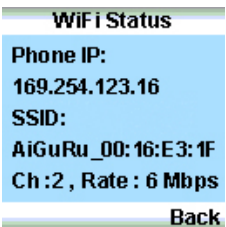
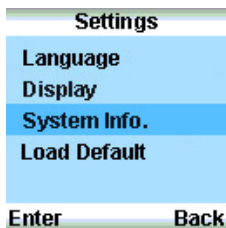
The configuration value of brightness is between -2 to 2.

### 3.5.3 System info.

The System Info. menu offers the information such as WiFi status, Mac address, and firmware version.

#### WiFi Status

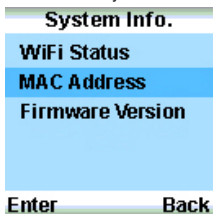
1. From the idle screen, press the left soft key to display the main menu and select **Settings**. From the **Settings** screen, select **System Info.** and press the left soft key to **Enter**.
2. From the **System Info.** screen, select **WiFi Status** and press the left soft key to **Enter**.
3. The **WiFi Status** screen opens.





## MAC Address

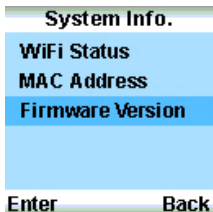
1. From the **System Info.** screen, select **MAC Address** and press the left soft key to **Enter**.
2. The **MAC Address** screen opens.



Both **WiFi Status** and **MAC Address** will not appear on the **System Info.** list when in the USB mode.

## Firmware Version

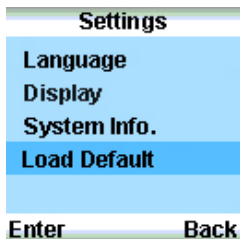
1. From the **System Info.** screen, select **Firmware Version** and press the left soft key to **Enter**.
2. The **Firmware Version** screen opens.



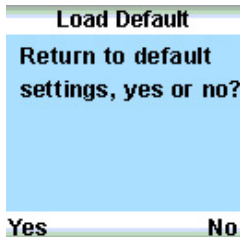
### 3.5.4 Load Default

To load the default settings:

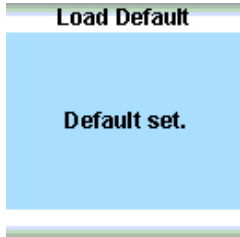
1. From the idle screen, press the left soft key to display the main menu and select **Settings**.
2. From the **Settings** screen, select **Load Default** and press the left soft key to **Enter**.



3. A message appears, asking for confirmation.
4. Press the left soft key (**Yes**) to confirm or the right soft key (**No**) to stop the default loading.



5. After the the loading completes, the screen shows **Default set.**



# Chapter 4

## *Windows<sup>®</sup> Vista<sup>™</sup> Configuraton and Windows<sup>®</sup> SideShow<sup>™</sup>*

*This chapter shows you how to install, configure and use the AiGuru S2 utility under Windows<sup>®</sup> Vista<sup>™</sup> operating system and how to use the Windows<sup>®</sup> SideShow<sup>™</sup> features via your AiGuru S2 handset.*



## 4.1 Installing AiGiuru S2 utility

If you are using Windows Vista OS, follow the instructions below to install AiGiuru S2 utility.

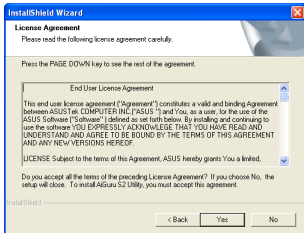
To install the AiGiuru S2 Utility:

1. Place the AiGiuru S2 support CD in the optical drive.

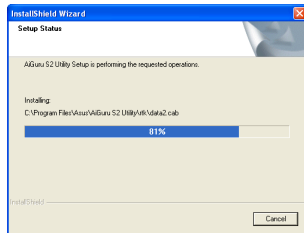
The AiGiuru S2 Control Panel appears. Click **Install AiGiuru S2 Utility**.



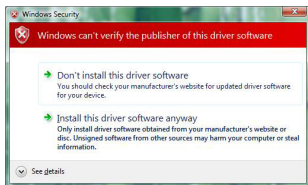
2. Click **Yes** to start installation when the InstallShield Wizard appears.



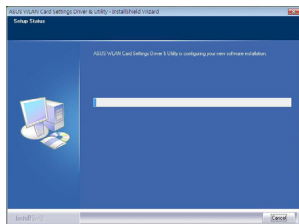
3. When the installation begins, the **Setup Status** window indicates the progress of installation.



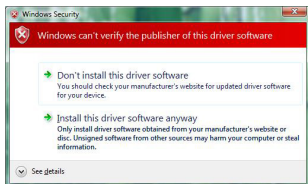
4. The Windows Security warning message pops out and click **Install this driver software anyway** to continue.



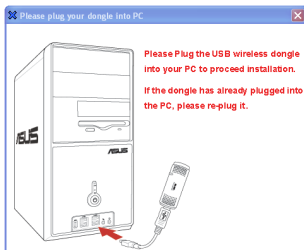
5. Then, the system will continue to install the ASUS WLAN card driver.



6. The Windows Security warning message pops out again for confirmation. Click **Install this driver software anyway** to continue.

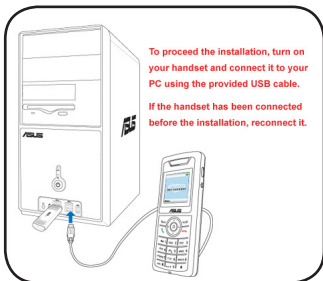


7. This screen appears when installation is completed. Refer to section 2.1.3 to connect the Wireless Link USB dongle to your PC.

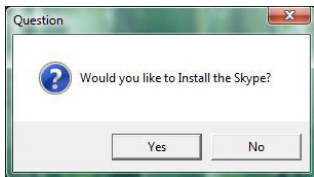


Installation can not proceed if the Wireless Link USB dongle is not connected to your PC.

8. This screen appears after the dongle is connected. Turn on your handset and connect it to your PC using the provided USB cable.



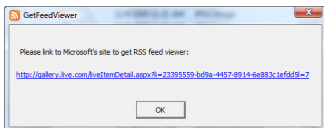
9. A dialogue box opens, asking if you would like to install or update the Skype™ program. Click **Yes** to install the program or **No** if your Skype™ program version is more updated.





Refer to the section **2.1 Installing the AiGuru S2 Utility** to install Skype™ program.

10. To install Feed Viewer for Windows SideShow, link to the Microsoft website to download Feed Viewer.



AiGuru S2 supports Windows® SideShow™ functions, and this function will be unavailable without Feed Viewer.

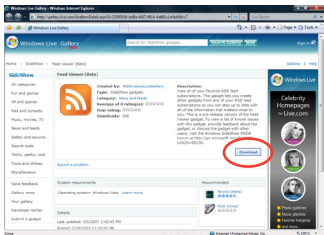
11. The Restarting Windows screen appears. Toggle **No, I will restart my computer later** and click **OK** to continue install Feed Viewer.

OR

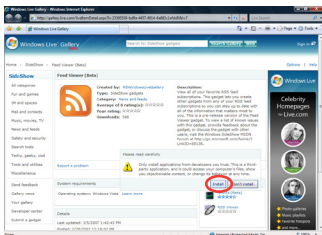
Click **OK** directly to restart the computer if you don't want to install Feed Viewer.



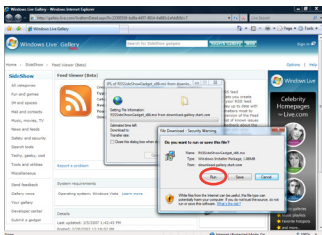
12. From the Windows Live Gallery web page, click the **Download** button to download the **Feed Viewer**.



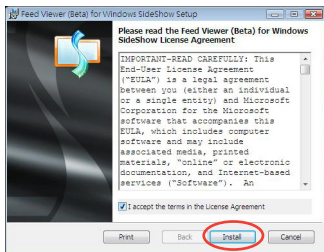
13. Click **Install** to continue.



14. Click **Run** to run the Feed Viewer.

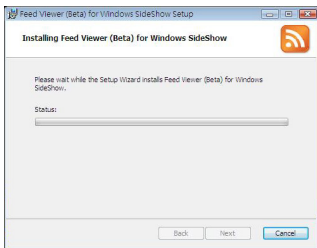


15. To use Feed Viewer for Windows SideShow, check the box before **License Agreement** and click **Install** to proceed the setup.

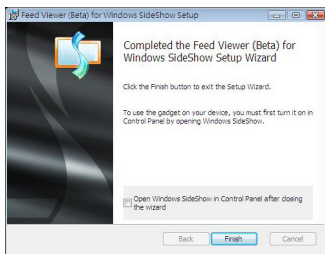




16. When the installation begins, the status window indicates the progress of installation.



17. When the installation completes, click the **Finish** button to exit the Setup Wizard.



18. Restart your computer to complete the installation.



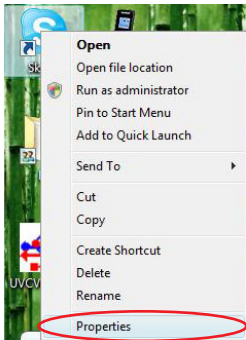
Refer to the section **2.1 Installing the AiGuru S2 Utility** to complete the installation of AiGuru S2 utility.

## 4.2 Changing Skype Privilege Level

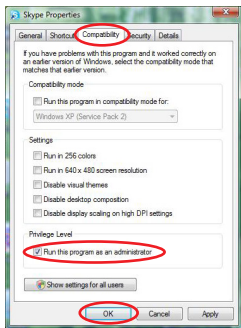
After you complete the AiGuru S2 utility installation, two shortcuts are added to the desktop, and both of the program icons are with the security shield overlay, indicating that the applications are intended for administrators only. Before using, you need to change the privilege level.

To change the privilege level:

1. Right-click the Skype icon on the desktop and select **Property**.



2. Click the **Compatibility** tab on the top and check the box before **Run this program as an administrator**. Click the **OK** button to complete the setup.
3. Initiate Skype. When the warning message pops out, click **Allow** to proceed.

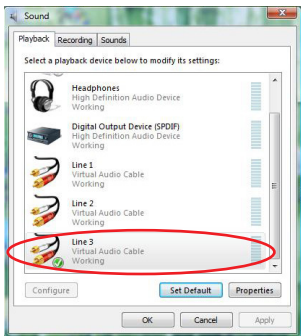
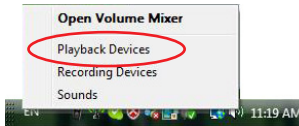


## 4.3 Setting up Wireless Music

Before enjoy wireless music under Windows Vista operating system, you need to configure the playback device first. Refer to section 2.2.3 for more information about wireless music.

To set up wireless music:

1. Right-click the speaker icon on the OS taskbar and select **Playback Devices**.
2. Click the **Playback** tab on the top and highlight **Line3**. Click the **OK** button to complete the setup.



It is a one-time setup. If you want to enjoy your music through the PC speakers, you have to manually reconfigure the playback device.

## 4.4 Using Windows SideShow function

AiGuru S2 supports Windows® SideShow™ functions, allowing you to read your emails and your subscribed RSS information away from your PC.



Visit Microsoft website ([www.microsoft.com](http://www.microsoft.com)) to learn more about Windows® SideShow™ features.

Windows® SideShow™ features are only available under Windows Vista OS.

### 4.4.1 Windows Mail

1. From the idle screen, press the left soft key and select Windows® SideShow™.



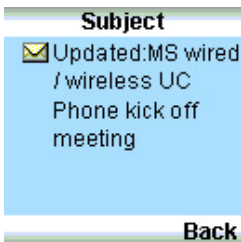
2. Highlight **Window Mail** and press the left soft key to **Enter**.



3. Scroll up and down for the unread mails in your Windows Mail in Vista. The list will display senders and the partial subject. Highlight one entry and press the left soft key to read more.



4. The subject of the selected mail will be displayed as shown.



This function enables you to read your Windows Mail in Vista only. Microsoft Outlook 2007 is not supported.

You can only know the mail senders and the subjects. Complete mails are not available.

## 4.4.2 RSS

1. From the Windows Sideshow menu, highlight **RSS** and press the left soft key to **Enter**.



2. From your subscribed RSS list, scroll up and down to select an RSS feed, then press the left soft key to **Enter**.



Refer to the **A.3 Subscribing RSS feeds** for instructions to subscribe an RSS feed from your favorite website.

3. From the RSS list, select an entry, and press the left soft key (Detail) to read more.



4. The content and the date will be displayed as shown. Scroll down to read more.



The date and the RSS content are offered by your subscribed website, and they vary with the websites.





# Appendix

## *Reference information*

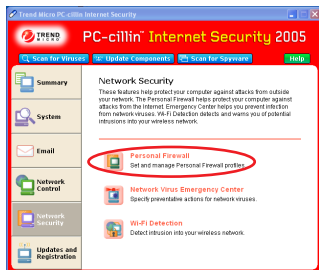
*This chapter describes PC-cillin firewall settings, RSS feeds and provides safety notices, an FAQ section as well as ASUS' contact information.*



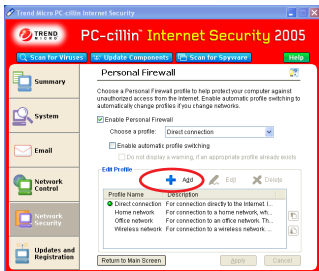
## A.1 Setting PC-cillin™

If you installed PC-cillin™ Internet Security software in your computer, make the following settings before installing AiGuru S2 Utility.

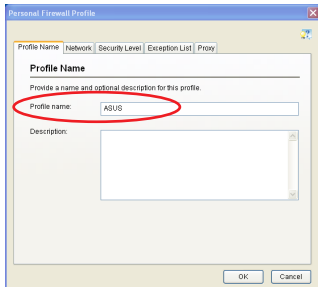
1. Open **Trend Micro PC-cillin Internet Security**, click **Network Security** tab, then click **Personal Firewall**.



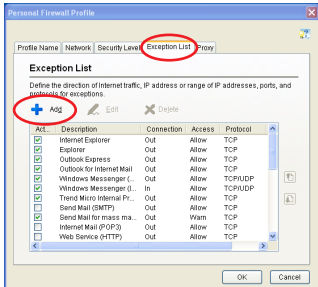
2. On **Personal Firewall** screen, click **Add**.



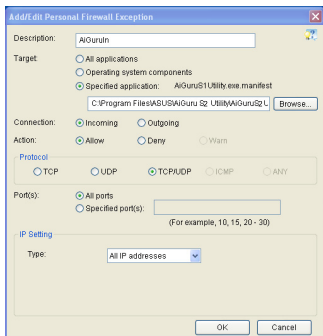
3. Key in **ASUS** in **Profile name** field, then click **OK**.



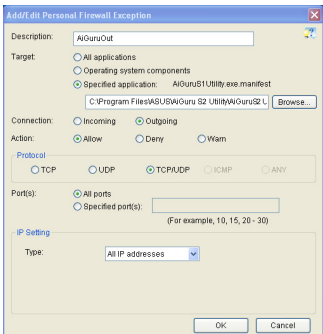
4. Select **Exception List** tab, and click **Add**.



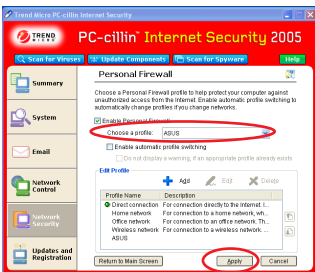
5. Add AiGuruln
- Description: **AiGuruln**
  - Target: Select **Specified application** and point to the location where the application is saved.
  - Connection: **Incoming**
  - Action: **Allow**
  - Protocol: **TCP/UDP**
  - Port(s): **All ports**
  - IP Setting: **All IP Addresses**



6. Add AiGuruOut
- Description: **AiGuruOut**
  - Target: Select **Specified application** and point to the location where the application is saved.
  - Connection: **Outgoing**
  - Action: **Allow**
  - Protocol: **TCP/UDP**
  - Port(s): **All ports**
  - IP Setting: **All IP Addresses**



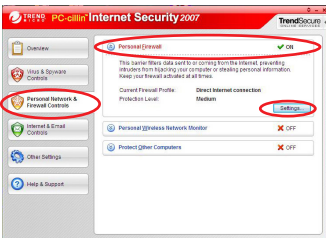
7. Back to the **Personal Firewall** screen, select **ASUS** in Choose profile field, then click **Apply**.



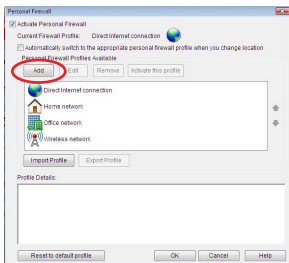
## PC-cillin™ 2007

If you installed PC-cillin™ Internet Security 2007 software in your computer, make the following settings before installing AiGuru S2 Utility.

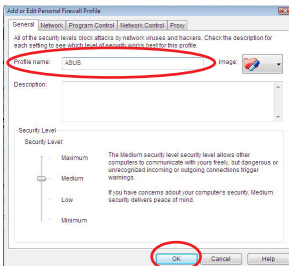
1. Open **Trend Micro PC-cillin Internet Security**, click **Personal Network Firewall Controls** tab on the left, and click **Personal Firewall**, then press the **Settings** button.



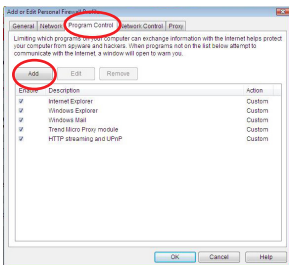
2. On **Personal Firewall** screen, click **Add**.



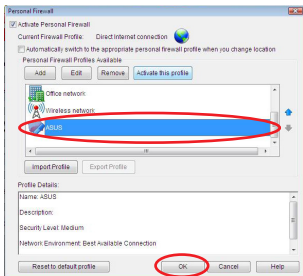
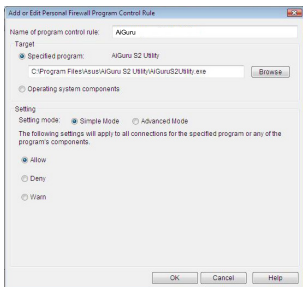
3. Key in **ASUS** in **Profile name** field, then click **OK**.



4. Click the **Program Control** tab on the top, and click **Add**.



5. Add AiGuru
  - a. Key in **AiGuru** in the **Name of program control rule** field.
  - b. In the **Target** section, toggle **Specified application** and locate the executable file of the application.
  - c. In the Setting section, toggle **Simple Mode** and **Allow**
  - d. Click the OK button to leave.
  
6. On **Personal Firewall** screen, click **ASUS** and press the **OK** button to complete the setup.



7. When you run the AiGuru S2 utility, PC-cillin warning message pops out shown and click **Allow** to continue.

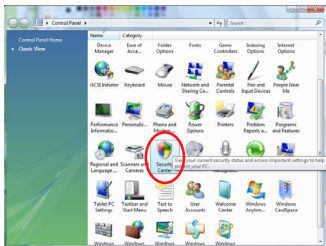




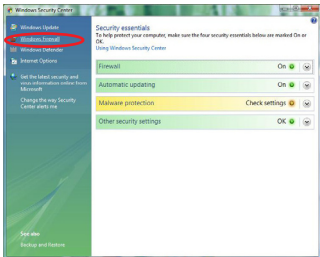


## A.2.2 Windows Vista

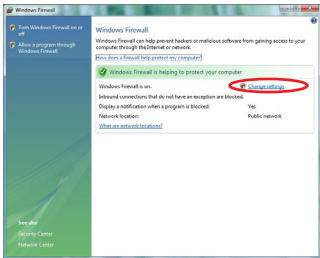
1. From the Control Panel, select **Security Center**.



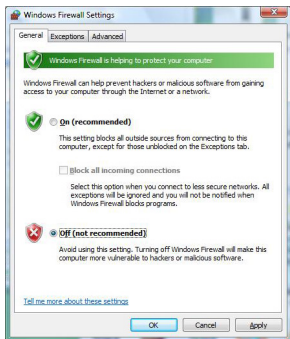
2. Click **Firewall**.



3. Select **Change Settings**.





4. Toggle **Off** and press the **OK** button to complete the setup.



## A.3 Subscribing RSS feeds

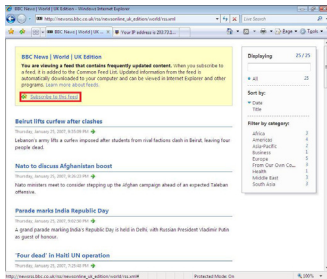
If you want to use the Windows® SideShow™ function, you need to subscribe RSS feeds first. Follow the instructions below to subscribe RSS feeds.

To subscribe RSS feeds using IE7.0:

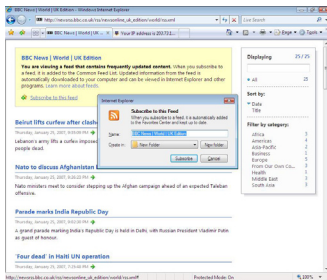
1. Visit the websites you are interested in. The website supports RSS if the web page is marked with  or  **RSS**.
2. Click the feed you would like to subscribe.



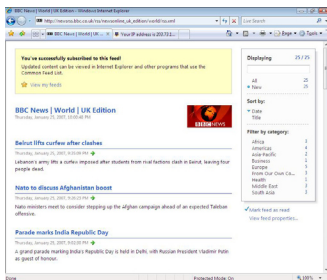
3. Click **Subscribe to this feed**.



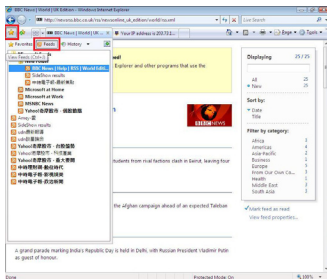
4. You can rename the feed and retrieve it in the folder you want, then click **Subscribe**.



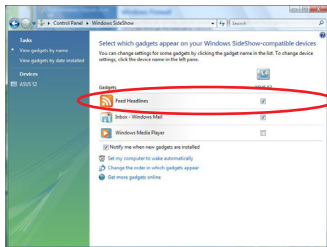
5. The web page shows that **You've successfully subscribed to this feed!**



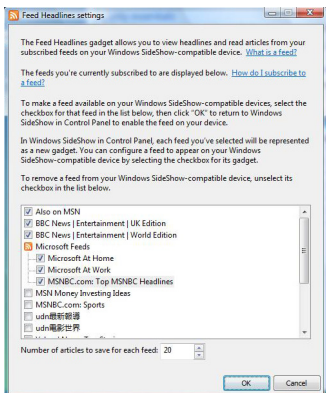
6. After the subscription, you can see it in your **Feeds** list.



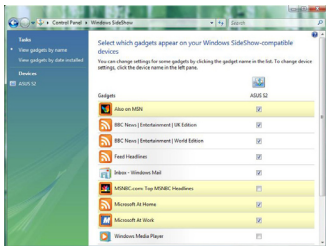
7. From the **Control Panel**, select **Windows SideShow** and double-click **Feed Headlines** on the Gadgets list.



8. The feeds you've subscribed will be displayed as shown. Click the checkboxes to add as a gadget. To remove the feed, just unselect the checkbox. Press the **OK** button to complete the **Feed Headlines settings**.



8. The gadgets you've selected will show on your AiGuru S2.



## A.4 Notices

### FEDERAL COMMUNICATIONS COMMISSION INTERFERENCE STATEMENT

This equipment has been tested and found to comply with the limits for a Class B digital device, pursuant to Part 15 of the FCC Rules. These limits are designed to provide reasonable protection against harmful interference in a residential installation. This equipment generates, uses and can radiate radio frequency energy and, if not installed and used in accordance with the instructions, may cause harmful interference to radio communications. However, there is no guarantee that interference will not occur in a particular installation. If this equipment does cause harmful interference to radio or television reception, which can be determined by turning the equipment off and on, the user is encouraged to try to correct the interference by one or more of the following measures:

- Reorient or relocate the receiving antenna.
- Increase the separation between the equipment and receiver.
- Connect the equipment into an outlet on a circuit different from that to which the receiver is connected.
- Consult the dealer or an experienced radio/TV technician for help.

#### **CAUTION:**

Any changes or modifications not expressly approved by the party responsible for compliance could void the user's authority to operate the equipment.

This device complies with Part 15 of the FCC Rules. Operation is subject to the following two conditions:

- (1) This device may not cause harmful interference and
- (2) This device must accept any interference received, including interference that may cause undesired operation.

## A.5 Safety statements

### Regulatory Information/Disclaimers

Installation and use of this Wireless LAN device must be in strict accordance with the instructions included in the user documentation provided with the product. Any changes or modifications (including the antennas) made to this device that are not expressly approved by the manufacturer may void the user's authority to operate the equipment. The manufacturer is not responsible for any radio or television interference caused by unauthorized modification of this device, or the substitution of the connecting cables and equipment other than manufacturer specified. It is the responsibility of the user to correct any interference caused by such unauthorized modification, substitution or attachment. Manufacturer and its authorized resellers or distributors will assume no liability for any damage or violation of government regulations arising from failing to comply with these guidelines.



To maintain compliance with FCC's RF exposure guidelines, this equipment should be installed and operated with minimum distance [20cm] between the radiator and your body. Use on the supplied antenna. Unauthorized antenna, modification, or attachments could damage the transmitter and may violate FCC regulations.

### Safety Information

In order to maintain compliance with the FCC RF exposure guidelines, this equipment should be installed and operated with minimum distance [20 cm] between the radiator and your body. Use only with supplied antenna. Unauthorized antenna, modification, or attachments could damage the transmitter and may violate FCC regulations.



Any changes or modifications not expressly approved in this manual could void your authorization to use this device.



## **FCC RF Radiation Exposure Statement**

This equipment complies with FCC RF radiation exposure limits set forth for an uncontrolled environment.

This equipment must not be co-located or operating in conjunction with any other antenna or transmitter.

Maximum SAR Measurement (1g)

Head: 802.11b=0.815 W/kg, 802.11g=0.466 W/kg

Body: 802.11b=0.352 W/kg, 802.11g=0.225 W/kg

Radio waves may affect electronic equipment or medical devices (e.g., pacemakers), which may cause malfunctions and possible injuries. If you use a pacemaker or other medical device, consult your physician or the manufacturer of the medical device before using the wireless networking feature.

## **Industry Canada regulatory information**

Operation is subject to the following two conditions:

- (1) This device may not cause harmful interference and
- (2) This device must accept any interference received, including interference that may cause undesired operation.

## **Declaration of Conformity**

This product complies with the Radio & Telecommunication Terminal Equipment Directive (1995/5/EC), the Electromagnetic Compatibility Directive (89/336/EEC), and Low Voltage Directive (73/23/EEC).

Compliance with these directives implies conformity to the following European Standards:

EN 55022, EN55024, EN 300 328, EN 301 489-1 & 17, EN 60950, EN 50360, EN 50361

## **EU RF Exposure Statement**

This equipment complies with EU RF radiation exposure limits of 2 W/kg. 802.11b=0.439 W/kg, 802.11g=0.25 W/kg

## Wireless Operation Channel for Different Domains

<b>North America</b>	2.412-2.462 GHz	Ch01 through Ch11
<b>Japan</b>	2.412-2.462 GHz	Ch01 through Ch11
<b>Europe</b>	ETSI 2.412-2.462 GHz	Ch01 through Ch11

## France Restricted Wireless Frequency Bands

Some areas of France have a restricted frequency band. The worst case maximum authorized power indoors are:

- 10 mW for the entire 2.4 GHz band (2400 MHz–2483.5 MHz)
- 100 mW for frequencies between 2446.5 MHz and 2483.5 MHz



Channels 10 through 13 inclusively operate in the band 2446.6 MHz to 2483.5 MHz.

There are few possibilities for outdoor use: On private property or on the private property of public persons, use is subject to a preliminary authorization procedure by the Ministry of Defense, with maximum authorized power of 100mW in the 2446.5–2483.5 MHz band. Use outdoors on public property is not permitted.

In the departments listed below, for the entire 2.4 GHz band:

- Maximum authorized power indoors is 100 mW
- Maximum authorized power outdoors is 10 mW

Departments in which the use of the 2400–2483.5 MHz band is permitted with an EIRP of less than 100mW indoors and less than 10mW outdoors:

01 Ain Orientales	02 Aisne	03 Allier	05 Hautes Alpes
08 Ardennes	09 Ariège	11 Aude	12 Aveyron
16 Charente	24 Dordogne	25 Doubs	26 Drôme
32 Gers	36 Indre	37 Indre et Loire	41 Loir et Cher
45 Loiret	50 Manche	55 Meuse	58 Nièvre
59 Nord	60 Oise	61 Orne	63 Puy du Dôme
64 Pyrénées Atlantique	66 Pyrénées	67 Bas Rhin	68 Haut Rhin
70 Haute Saône	71 Saône et Loire	75 Paris	82 Tarn et Garonne
84 Vaucluse	88 Vosges	89 Yonne	90 Territoire de Belfort
94 Val de Marne			

This requirement is likely to change over time, allowing you to use your wireless LAN card in more areas within France. Please check with ART for the latest information ([www.art-telecom.fr](http://www.art-telecom.fr))



Your WLAN Card transmits less than 100 mW, but more than 10 mW.

## UL Safety Notices

Required for UL 1459 covering telecommunications (telephone) equipment intended to be electrically connected to a telecommunication network that has an operating voltage to ground that does not exceed 200V peak, 300V peak-to-peak, and 105V rms, and installed or used in accordance with the National Electrical Code (NFPA 70).

When using the device, basic safety precautions should always be followed to reduce the risk of fire, electric shock, and injury to persons, including the following:

- **Do not use** the device near water, for example, near a bath tub, wash bowl, kitchen sink or laundry tub, in a wet basement or near a swimming pool.
- **Do not use** the device during an electrical storm. There may be a remote risk of electric shock from lightning.
- **Do not use** the device in the vicinity of a gas leak.

Required for UL 1642 covering primary (nonrechargeable) and secondary (rechargeable) lithium batteries for use as power sources in products. These batteries contain metallic lithium, or a lithium alloy, or a lithium ion, and may consist of a single electrochemical cell or two or more cells connected in series, parallel, or both, that convert chemical energy into electrical energy by an irreversible or reversible chemical reaction.

- **Do not** dispose the device battery pack in a fire, as they may explode. Check with local codes for possible special disposal instructions to reduce the risk of injury to persons due to fire or explosion.
- **Do not** use power adapters or batteries from other devices to reduce the risk of injury to persons due to fire or explosion. Use only UL certified power adapters or batteries supplied by the manufacturer or authorized retailers.

## Power Safety Requirement

Products with electrical current ratings up to 6 A and weighing more than 3 Kg must use approved power cords greater than or equal to: H05VV-F, 3G, 0.75 mm<sup>2</sup> or H05VV-F, 2G, 0.75 mm<sup>2</sup>.

## Nordic Cautions

**CAUTION!** Danger of explosion if battery is incorrectly replaced. Replace only with the same or equivalent type recommended by the manufacturer. Dispose of used batteries according to the manufacturer's instructions. (English)

**ATTENZIONE!** Rischio di esplosione della batteria se sostituita in modo errato. Sostituire la batteria con una di tipo uguale o equivalente consigliata dalla fabbrica. Non disperdere le batterie nell'ambiente. (Italian)

**VORSICHT!** Explosionsgefahr bei unsachgemäßen Austausch der Batterie. Ersatz nur durch denselben oder einem vom Hersteller empfohlenem ähnlichen Typ. Entsorgung gebrauchter Batterien nach Angaben des Herstellers. (German)

**ADVARSEL!** Lithiumbatteri - Eksplosionsfare ved fejlagtig håndtering. Udskiftning må kun ske med batteri af samme fabrikat og type. Levér det brugte batteri tilbage til leverandøren. (Danish)

**WARNING!** Explosionsfara vid felaktigt batteribyte. Använd samma batterityp eller en ekvivalent typ som rekommenderas av apparattillverkaren. Kassera använt batteri enligt fabrikantens instruktion. (Swedish)

**VAROITUS!** Paristo voi räjähtää, jos se on virheellisesti asennettu. Vaihda paristo ainoastaan laitevalmistajan suosittelemaan tyyppiin. Hävitä käytetty paristo valmistajan ohjeiden mukaisesti. (Finnish)

**ATTENTION!** Il y a danger d'explosion s'il y a remplacement incorrect de la batterie. Remplacer uniquement avec une batterie du même type ou d'un type équivalent recommandé par le constructeur. Mettre au rebut les batteries usagées conformément aux instructions du fabricant. (French)

**ADVARSEL!** Eksplosjonsfare ved feilaktig skifte av batteri. Benytt samme batteritype eller en tilsvarende type anbefalt av apparatfabrikanten. Brukte batterier kasseres i henhold til fabrikantens instruksjoner. (Norwegian)

**注意!** この装置は、現在設置されている場所で妨害波の測定がされた情報技術装置です。この場所以外で使用する場合は、その場所で、再び妨害波の測定が必要となります。(Japanese)

## Proper Disposal

The symbol of the crossed out bin indicates that the product (electrical and electronic equipment) should not be placed in municipal waste. Check local regulations for disposal of electronic products.



## Safety Warnings

Read the following safety warnings carefully before using your cell phone.

- This equipment is intended for use with power supplied from supplied battery charger(s) and/or power supply unit(s). Other usage will invalidate any certification given to this apparatus and may be dangerous.
- Switch off your phone when in an aircraft. The use of wireless phones in an aircraft may be dangerous to the operation of the aircraft, disrupt cellular networks, and may be illegal. Failure to observe this instruction may lead to suspension or denial of phone services to the offender, legal action or both.
- Do not use the phone or phone equipment when at a refueling point.
- Observe restrictions on the use of radio equipment in fuel depots, chemical plants, or where blasting operations are in progress.
- The use of the Alert device to operate a vehicle's lights or horn on public roads is not permitted.

You **MUST** exercise proper control of your vehicle at all times. Observe the following safety precautions when driving:

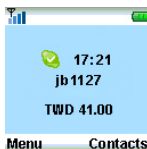
- Do not use a hand-held telephone or microphone while you are driving.
- When driving, find a safe place to stop the vehicle before using the phone.
- Do not speak into a hands-free microphone if it will distract you from driving.
- You **MUST NOT** stop on the hard shoulder of a motorway to answer or make a call, except in an emergency.
- The radio equipment should be connected to the antenna via a non-radiating cable (e.g. coaxial cable). The antenna must be mounted in a position such that no part of the human body will normally rest close to any part of the antenna unless there is an intervening metallic screen, such as a metallic roof.

### NOTES:


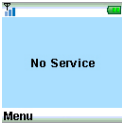
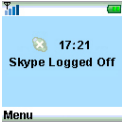
- You can connect the USB charger or USB data cable to the device in only one orientation. Incorrect insertion of the cable connector may cause short circuiting and may damage the device.

## A.6 Troubleshooting

When the phone and wireless settings are configured properly, the main display should show the following. This means that the phone is ready to use.



Following are some situations you might encounter, indicating that there is a problem with the connection, and the possible actions you can take.

Message displayed	Problem description	Action to take
<b>WiFi Disconnected</b> 	<ol style="list-style-type: none"><li>1. The phone was not configured properly.</li><li>2. Communication between the phone and the Wireless Link USB dongle is not established.</li></ol>	Reconfigure the phone settings. See section “2.2.3 Handset Mode Switch and WiFi Configure”
<b>No Service</b> 	<ol style="list-style-type: none"><li>1. The communication between the phone and the Wireless Link USB dongle is established.</li><li>2. The AiGuru S2 Utility has not been launched.</li></ol>	See section “2.2 Optimizing the AiGuru S2 Utility settings” to launch the AiGuru S2 Utility.
<b>Skype™ Logged Off</b> 	<ol style="list-style-type: none"><li>1. Skype™ is not launched on your PC or logged in with personal account.</li><li>2. There is no Internet access.</li></ol>	Make sure that you have Internet access and that you have launched and logged into Skype™



Different from Offline (Presence), the message **Skype Logged Off** denotes some possible problems of the Skype utility or the lack of internet access.

## A.7 FAQ

This section provides solutions to problems that may occur or questions commonly encountered during the installation and operation of the ASUS AiGuru S2 Wireless Skype Phone. Read the description below to solve your problems. If you cannot find an answer here, check the ASUS contact information at the end of the user manual.

### Q1. Why is there no dial tone when I press the Talk & Recall button?

- A1. Either the Wireless Link USB dongle is not properly connected to the PC, the handset is too far from the Wireless Link USB dongle, or the battery is low (low battery icon is displayed).
- Check the connections.
  - Move closer to the Wireless Link USB Dongle unit.
  - Charge the battery.
  - If there is something wrong with Skype Program itself, please restart Skype.

### Q2. Why does the screen show “WiFi Disconnect”?

- A2. When the phone is out of the Wireless Link USB dongle’s operating range, the phone will keep accessing its signal source for 30 seconds. If detecting the signal fails, the screen shows the message “WiFi Disconnect” and the goes into sleep mode.

To regain wireless access, move the handset closer to the Wireless Link USB dongle and press any key on the handset for access retrieval.

### Q3. Why is the battery icon “empty” although the handset has been charged for 24 hours?

- A3. The handset might not be connected to the PC correctly. It is also possible that the handset’s battery is defective.
- Contact your dealer to purchase a new rechargeable battery.
  - Make sure the battery icon is scrolling. If it is not, the battery is not charging.

### Q4. Why is there no symbol on the display?

- A4. This could mean that the battery is not charged or the Phone Kit is not properly connected.
- Verify that you have set up the Phone Kit properly.



- Charge the battery.

**Q5. Why is the audio quality poor sometimes ? (crackles/echoes, etc.)**

A5. There may be interference from nearby electrical appliances or the Wireless Link USB dongle is installed in a room with thick walls. If this is the case, move the PC to a different location. If the handset is too far from the Wireless Link USB dongle, move the handset closer.

**Q6. Why can I not hear the other party clearly? Why is the speaker too loud/ too quiet?**

A6. The speaker volume on your PC or on the handset may be set too low. Adjust the volume to get better effect.

**Q7. Why does the phone not ring when a call comes in?**

A7. The ringer may be too small to hear. Adjust the volume of the ringer.

**Q8. Why does the contact list/user status return a “NO SERVICE” message?**

A8. This may be caused by not starting or logging into Skype™ properly. Verify that you are logged into Skype™ and the program is running properly.

Another cause may be that the AiGuru S2 Utility or Wireless Link USB dongle driver has not been launched on the PC, or the dongle plug may be disconnected. Verify that the AiGuru S2 Utility and Wireless Link USB dongle driver are functioning properly and that the dongle plug is properly connected.

Also, verify that the PC is not in standby/hibernate mode.

**Q9. Why can I not SkypeOut?**

A9. If 00, + or 011 is omitted, enter 00, + (hold the “0” key) or 011 before the number you are dialing. If your Skype™ account has too little or no credit left, purchase more credits on the Skype™ website. The handset may have lost its link. Verify that the handset has a link with the Wireless Link USB dongle.

**Q10. Why am I not getting any tone response from Skype™?**

A10. Either the Skype™ or the PC application have not started, the USB dongle is not plugged in, your PC is in standby/hibernate mode, or your other party is offline.

- Make sure both Skype™ and the PC application is/are started on the PC and running properly.

- Make sure the phone is set up correctly.
- Wait for the remote party to be online.

**Q11. Why can I not hear any sound from the phone while the Wireless Link USB dongle is plugged in to the PC and the wireless setup is properly established?**

A11. When the Wireless Link USB dongle is plugged in to the USB port of your PC, the Phone Voice stream will be routed to the handset. If you cannot hear any voice from the phone, check the setting of Sound Devices in Skype™. Go to **Skype™ > Tools > Options > Sound Devices** and make the following settings:

Audio In: Virtual Cable 1

Audio Out: Virtual Cable 2

Ringling: Virtual Cable 2

**Q12. Why can I not hear any sound from the PC speakers for normal PC operation while the Wireless Link USB Dongle is plugged in to the PC?**

A12. The PC default audio setting might be in the wrong order. You can change back the setting of your PC audio by going to **Control panel > Sound > Speech and Audio Device > Sound and Audio Device > Audio. Check Only use default devices.**

**Q13. What will I do if the phone is out of operating range? How come no signal is detected?**

A13. When the phone is out of the Wireless Link USB dongle's operating range, the phone will keep accessing its signal source for 30 seconds. If detecting the signal fails, the screen shows the message "**WiFi Disconnect**" and then goes into sleep mode.

To regain the connection, move the handset closer to the Wireless Link USB dongle and press any key on the handset for access retrieval.

**Q14. Why can I not hear any music when using WiFi Music on the phone?**

A14. Please check whether the setting of Windows Media Player is muted or not. If yes, disable the setting. Or refer to Q&A11. for answers.

**Q15. What will I do if I would like to use other Skype devices, or headset rather than this phone? What if I cannot hear any sound from other Skype devices or headset rather than this phone?**

A15. If you cannot hear any voice from other Skype devices or headset, you may

1. Completely turn off the software utility of this phone, AiGuru S2 Utility, and restart Skype™
2. Check the setting of Sound Devices in Skype™. Go to **Skype™ > Tools > Options > Sound Devices** and make the following settings:  
Audio In: Desired Skype Device or windows default device  
Audio Out: Desired Skype Device or Windows default device  
Ringing: Desired skype Device or Windows default device

## ASUS contact information

### ASUSTeK COMPUTER INC. (Taiwan)

#### *Technical Support*

Hotline	0800-093-456 (Toll-free call from Taiwan only)
Fax	+886-2-2895-9254
E-mail	<a href="http://vip.asus.com/eservice/techserv.aspx">http://vip.asus.com/eservice/techserv.aspx</a>
Web site	<a href="http://taiwan.asus.com.tw">http://taiwan.asus.com.tw</a>

### ASUSTeK COMPUTER INC. (Asia-Pacific)

#### *Technical Support*

Hotline	+886-2-2894-3447
Fax	+886-2-2890-7698
E-mail	<a href="http://vip.asus.com/eservice/techserv.aspx">http://vip.asus.com/eservice/techserv.aspx</a>
Web site	<a href="http://www.asus.com">http://www.asus.com</a>

### ASUS COMPUTER INTERNATIONAL (America)

#### *Technical Support*

##### *Motherboard and General Product Support*

E-mail	<a href="http://vip.asus.com/eservice/techserv.aspx">http://vip.asus.com/eservice/techserv.aspx</a>
Telephone	+1-502-995-0883 (select option 3)
Fax	+1-502-933-8713

### ASUS COMPUTER GmbH (Germany and Austria)

#### *Technical Support*

Hotline (MB/Others)	+49-2102-9599-0
Notebook	+49-2102-959910
Fax	+49-2102-959911
Email	<a href="http://www.asus.de/support/support.htm">http://www.asus.de/support/support.htm</a>
Website	<a href="http://www.asus.de">http://www.asus.de</a>

## **ASUS contact information**

### **ASUS Holland B.V. (Netherlands)**

Notebook Hotline	+31-(0)591-668190
Fax	+31-(0)591-666853
Email	<a href="http://vip.asus.com/eservice/techserv.aspx">http://vip.asus.com/eservice/techserv.aspx</a> (Notebook, MB, VGA only)

### **ASUS COMPUTER (China)**

Telephone	+86-10-82667575
Email	<a href="http://vip.asus.com.cn/eservice/techserv.aspx">http://vip.asus.com.cn/eservice/techserv.aspx</a>

