

How to Update the Firmware. (for O!Play Mini)

Step1. Firmware Version check.

1. Please check the version of your Media Player's current firmware before beginning this update. If your Media Player's firmware is the latest version. you will not need to update the firmware.
2. Connect the Media Player to your TV and then turn on the Media Player.
3. Go to **Setup > Firmware Upgrade > Version Info** and press "**OK**" to Check the firmware version. **System: 1.0.7** (earlier version).
4. Go to **Setup > Firmware Upgrade > USB upgrade** to perform the firmware upgrade process.

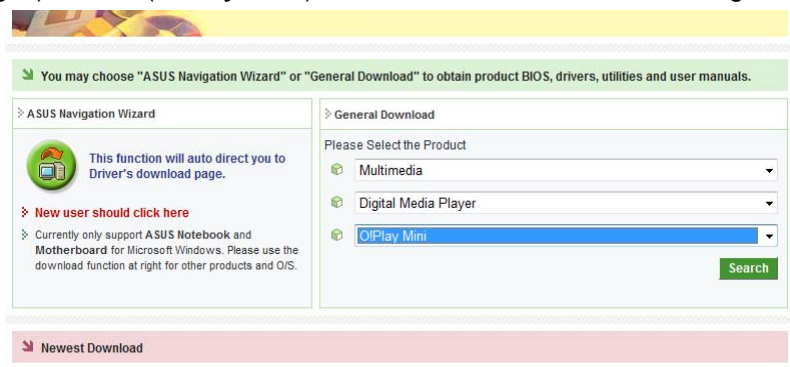
If the O!Play Mini device is shut down or powered off during the software installation, the update will fail. If the O!Play Mini will not power on, you will need to reset the device. This will restore the device back to its default settings. The firmware update can be attempted again at this point.

Step2. Downloading the latest Firmware.

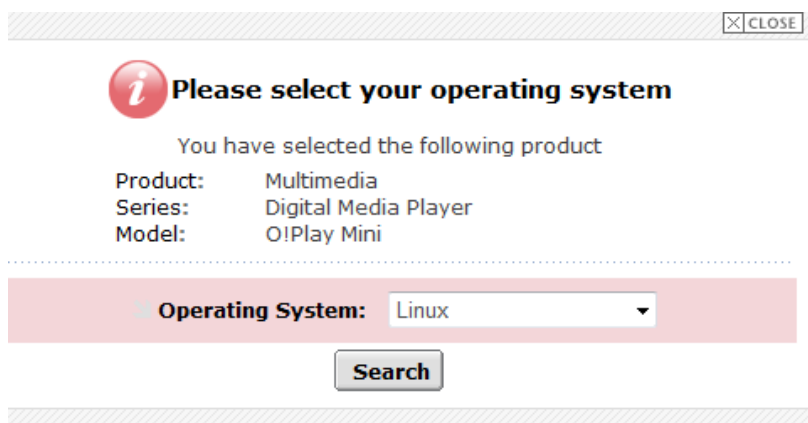
1. Log onto ASUS SUPPORT web site :

<http://support.asus.com/download/download.aspx?SLanguage=en-us>

2. In the search window. Please Select the Product.(**Multimedia**) Series (**Digital Media Player**). Models(**O!Play Mini**), then click **Search**. Please see image below.



3. When the page open, Please Select your operating system. Then click **Search**. Please see image below.



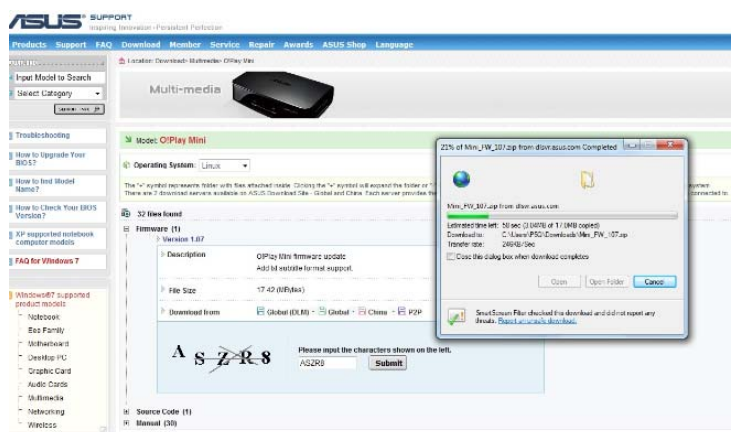
4. When the next page open, you can find the firmware folder. Please see image below.



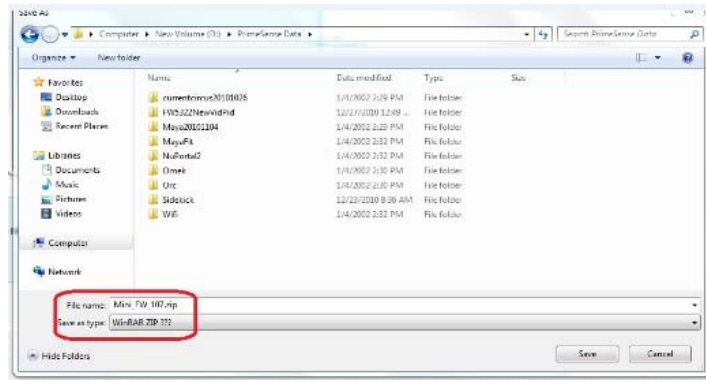
5. Please click the “firmware” folder, Please see image below.



6. Select an appropriate Firmware. then Click the Download from...that's nearest you, a 'File Download' window will probably pop up. Please see image below.



7. Click the save. if save it to your computer's Desktop. Please see image below.



8. The zipped firmware will be downloaded and saved to your Desktop.

Once the zipped firmware (**Mini_FW_107.zip**) is downloaded and saved on your desktop,

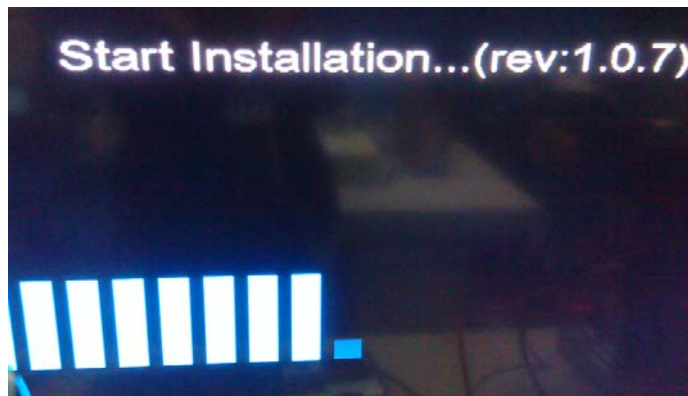


9. Unzip the compressed firmware to (**install.img**). Then using a blank/ formatted USB Flash Stick to copy or paste the (**install.img** Only). The PDF (How to Update the Firmware) for your reference.



Step3. To Update the Firmware.

1. Insert the USB Flash Stick(the **install.img** Loaded) to USB port of your Media Player. The System will recognize the firmware in the USB Flash Stick automatically.
- 2.Go to **Setup > Firmware Upgrade > USB upgrade** and press “**OK**” to start updating.
4. At this moment, Your TV screen will go dark temporarily and following screen will display again.



New firmware updates is in the process (take about 4 minute).when the update is successfully completed the Media Player will reboot automatically.

WARNING :

DO NOT UNPLUG (Power Cord and USB Flash drive)TURN OFF, OR USE ANY OTHER FEATURE OF YOUR MEDIA PLAYER DURING THE FIRMWARE UPDATE PROCESS. Doing so will cause the writing of the firmware update to the player to be halted and the player may no longer operate properly. If the player stops working, please contact ASUS Authorized Service Provider at 0800-093-456.

Emergency Recovery Instructions.

If the O!Play accidentally shut down during the firmware upgrade or you are still unable to update the firmware, reset the system and perform the updating process again.

the safe mode will enable the O!Play to be re-upgraded. you can to restart the Safe Mode Upgrade.

Please follow the steps below:

- 1.While pressing the reset button (The reset button is located on the rear panel. Use a pointed object to press this button), Disconnect DC plug. wait 5 seconds and

reconnect DC plug of the Power adapter.

2. The message will be displayed on the screen as **“Please wait for USB update....”**

2. Re- Insert the USB Flash Stick(the **install.img** Loaded) to USB port of your O!Play Mini.

3. The Media Player will re-upgrade automatically. Repeat the procedure Until the upgrade has been successfully finished.

If the firmware cannot be upgraded with the Safe Mode. it means that either incorrect firmware or problems with the USB Flash Stick. (Replace it & re-download)

