

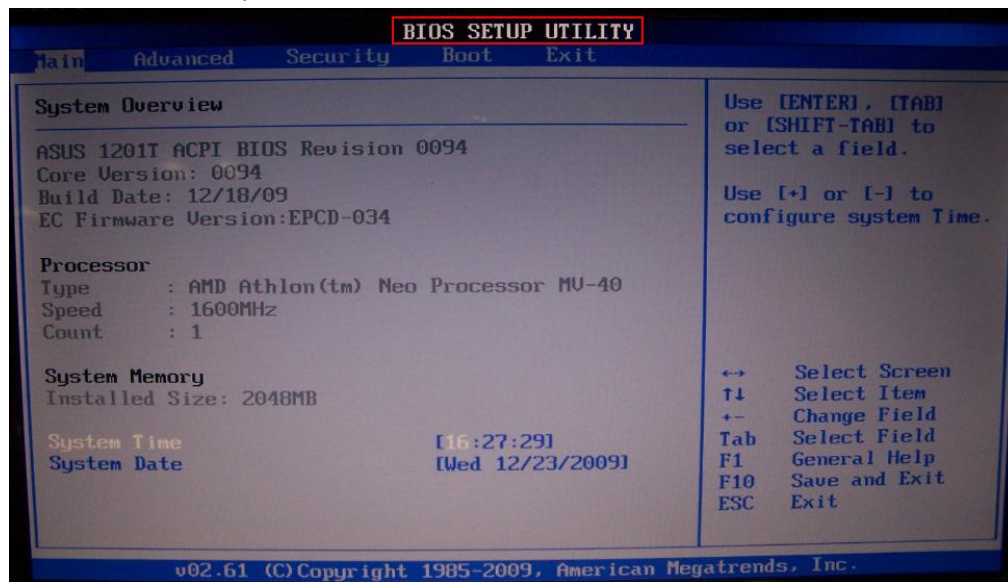
Pure Windows XP Operating System Installation on Eee PC 1201T

Please note:

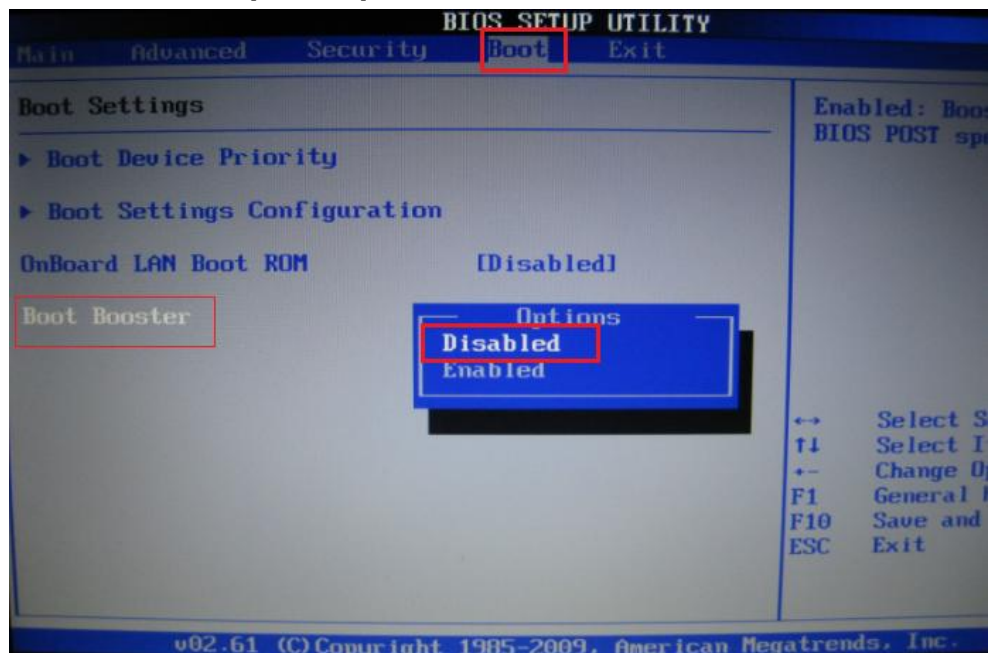
You should **disable Boot Booster** and **change SATA mode** in BIOS Setup before you perform system installation from USB flash disk external optical driver with Windows XP DVD.

Disable Boot Booster

1. Start the system and press <F2> on bootup to show POST screen. Press <F2> again to enter the BIOS setup.



2. Set Boot Booster to [Disabled].

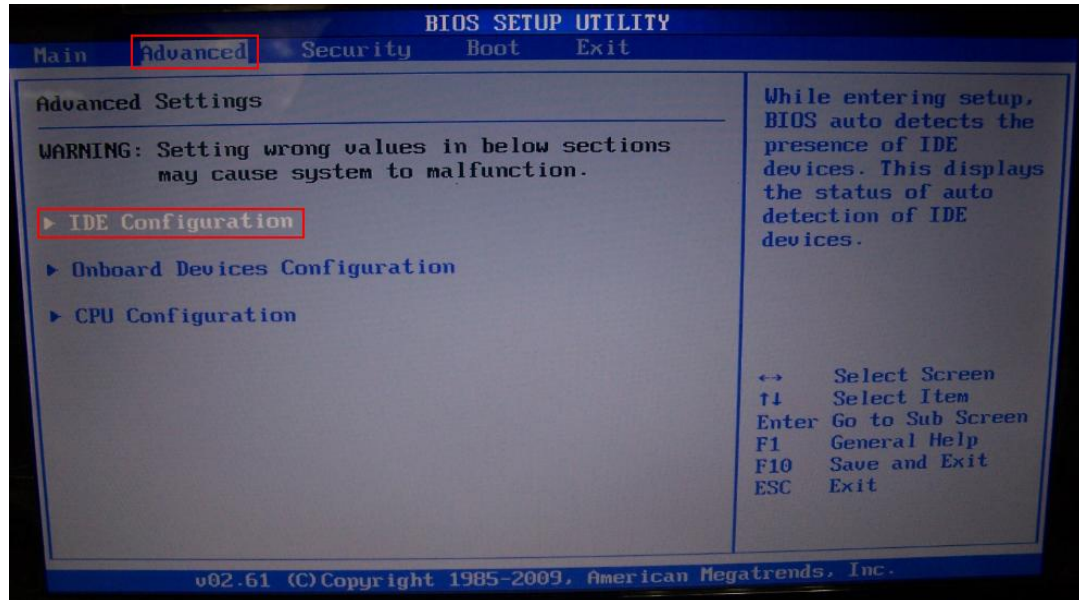


(Remember to enable Boot Booster after you complete hardware change or system installation.)

Change SATA mode

As the default SATA mode is [IDE->AHCI], you need to change the SATA mode to [Native IDE] mode if you want to install Windows XP manually. Follow the instructions below:

1. Select **Advanced-> IDE configuration** and press <Enter>.



2. Select **Onchip SATA Type** and press <Enter> .
3. Select [Native IDE] and press <Enter>.



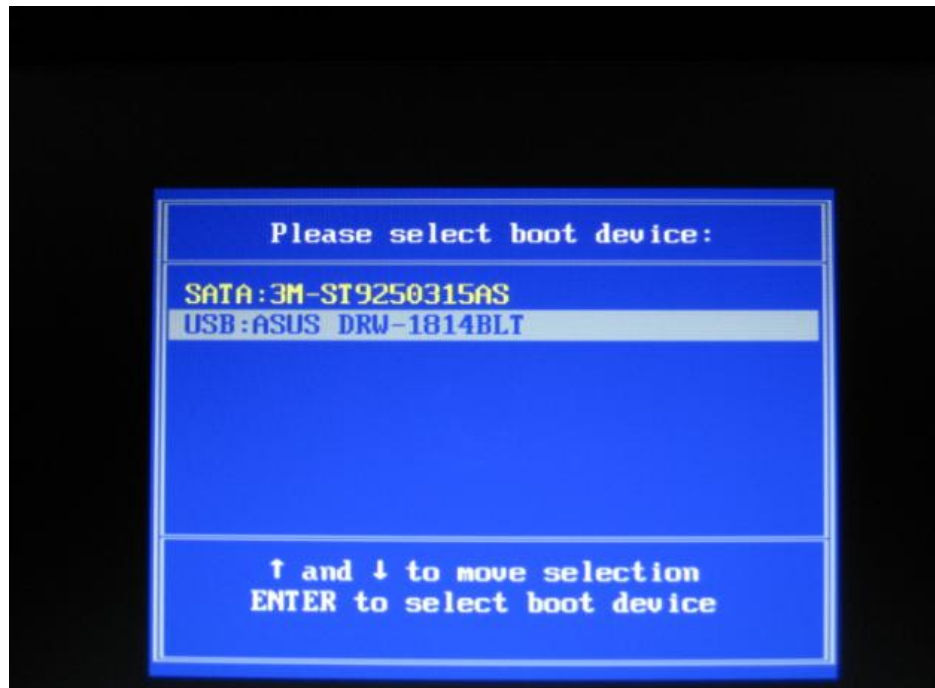
4. Press <F10> and select **OK** to save configuration changes and exit.

Pure OS Installation on EeePC 1201T

When you install your Eee PC to the pure XP system, no drivers and utilities are installed. You need to manually install the drivers and utilities, which are contained in the support CD coming with your Eee PC package.

Follow the instructions below to install your pure XP on your Eee PC:

1. Connect the power cord to your **Eee PC**.
2. Connect an external optical drive to your **Eee PC** and insert the **DVD into the optical drive**.
3. Power up the machine and press <ESC> constantly and **Please Select boot device** screen appears. Select **USB: ******* (may be labeled as the ODD brand name) to boot from the optical drive. Press<Enter> and then Press any key to continue.



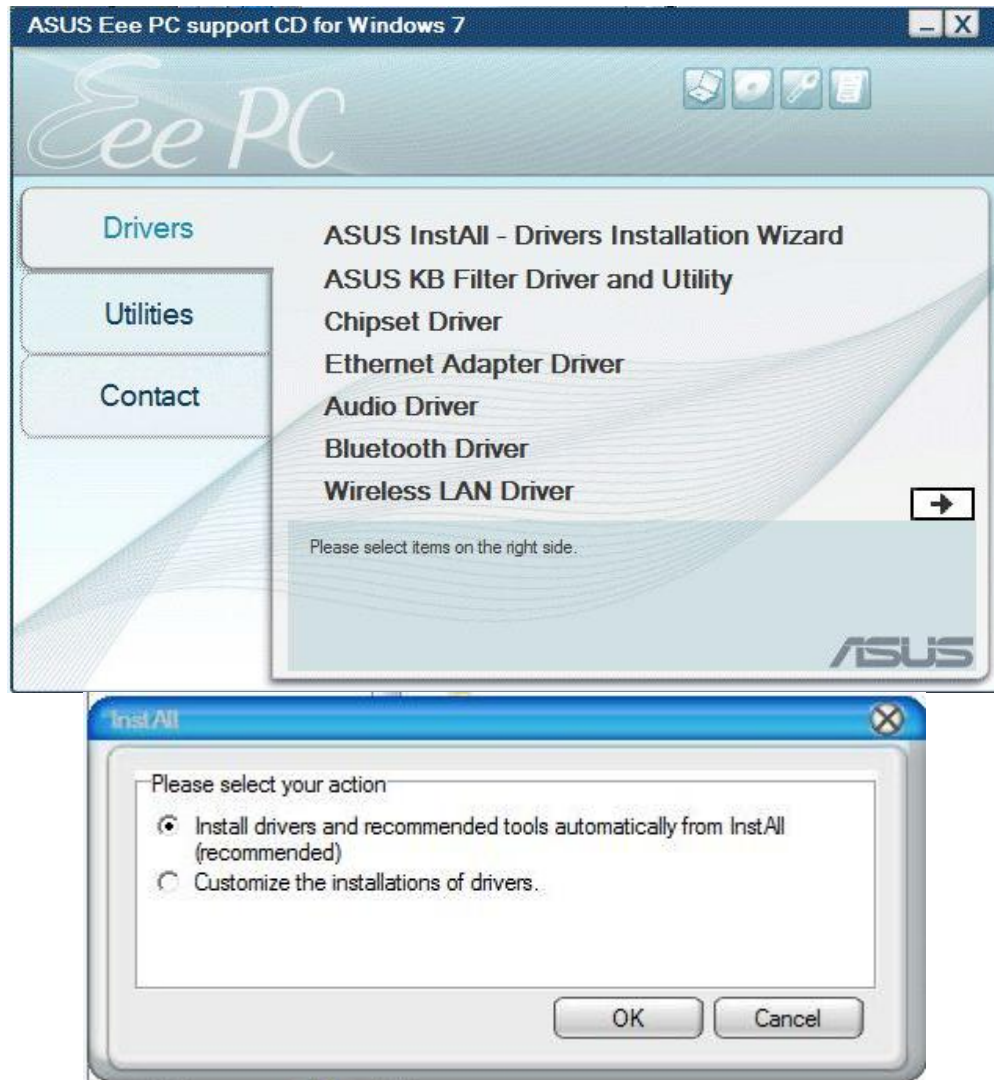
4. Select where do you want to install your pure OS.
5. Follow the onscreen instructions to complete the installation process.
6. Set up your language, time zone, keyboard, computer name, and user name to enter the Windows OS>

Install required drivers, utilities and applications with Support CD.

The Support CD that comes with your Eee PC contains all required drivers, software applications, and utilities that you can install to avail all the features. (The drivers and utilities bundled in the Support CD may vary by models and are subject to change without notice.)

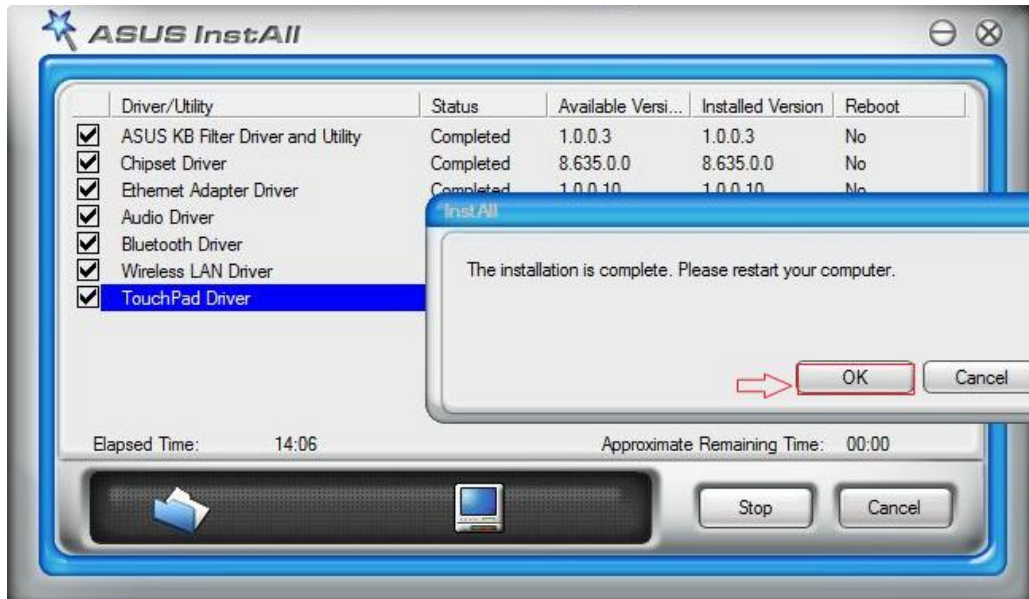
Running Support CD.

1. Insert the Support CD in the external optical drive. The CD automatically displays the drivers menu if Autorun is enabled in your computer.
2. Select "ASUS InstAll-Drivers Installation Wizard" then "OK".



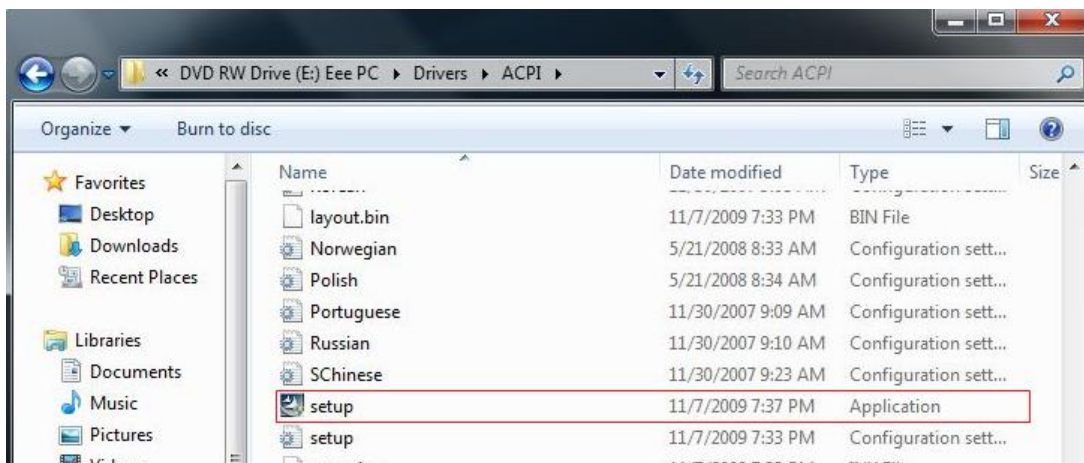
The drivers menu shows available device drivers (for XP/Windows 7) when the system detects installed devices.

3. When the installation is complete, click "OK" to restart your computer.



Remark:

If it fails to install some driver or utility by auto- running Support CD, you can also open the files in your Support CD and manually install them separately by running their corresponding "Setup.exe".



You can also download these drivers and utilities from ASUS support download site.

<http://support.asus.com/download/download.aspx?SLanguage=en-us>

If you don't have support CD, please get them from ASUS support site as the link above, decompress these .ZIP files and install them one by one in the following order.

1. KB Filter Driver: Run "Setup.exe".
2. USB Filter Driver: Run "Setup.exe".
3. Chipset Driver: Run "Setup.exe".

4. ASUS ACPI Driver and Utility: Run "Setup.exe".
5. Ethernet Adapter Driver: Run "Setup.exe".
6. Audio Driver: Run "Setup.exe".
7. Bluetooth: Run "Setup.exe".
8. Wireless Lan Driver: Run "Setup.exe".
9. Touchpad Driver: Run "Setup.exe".
10. CPU: Run "Setup.exe".
11. Others...