

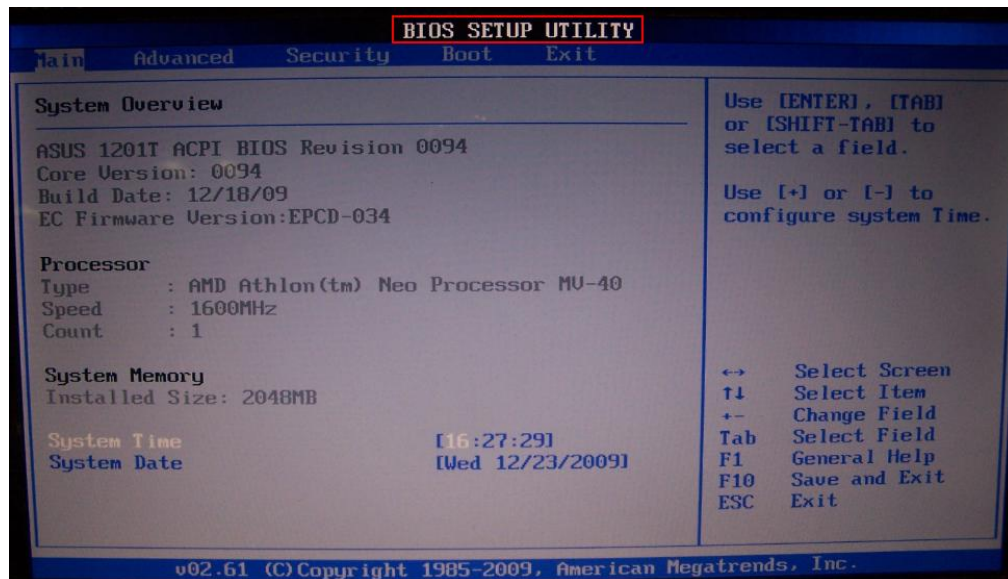
Pure Windows 7 Operating System Installation on Eee PC 1201T

Please note:

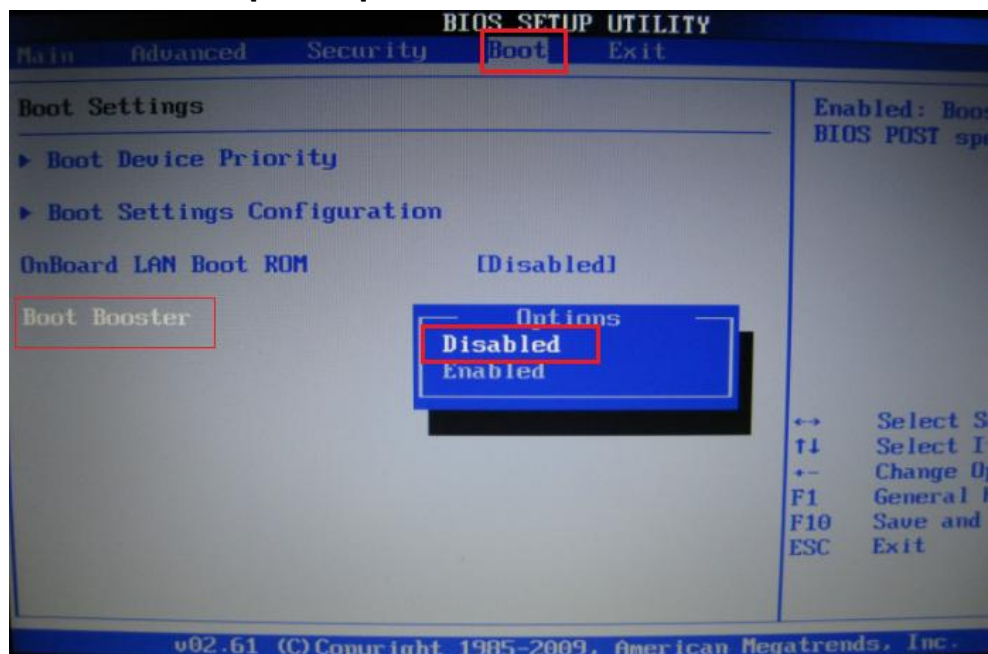
You should **disable Boot Booster** in BIOS Setup before you perform system installation from USB flash disk external optical driver with Windows XP DVD.

Disable Boot Booster

1. Start the system and press <F2> on bootup to show POST screen. Press <F2> again to enter the BIOS setup.



2. Set Boot Booster to [Disabled].



(Remember to enable Boot Booster after you complete hardware change or system installation.)

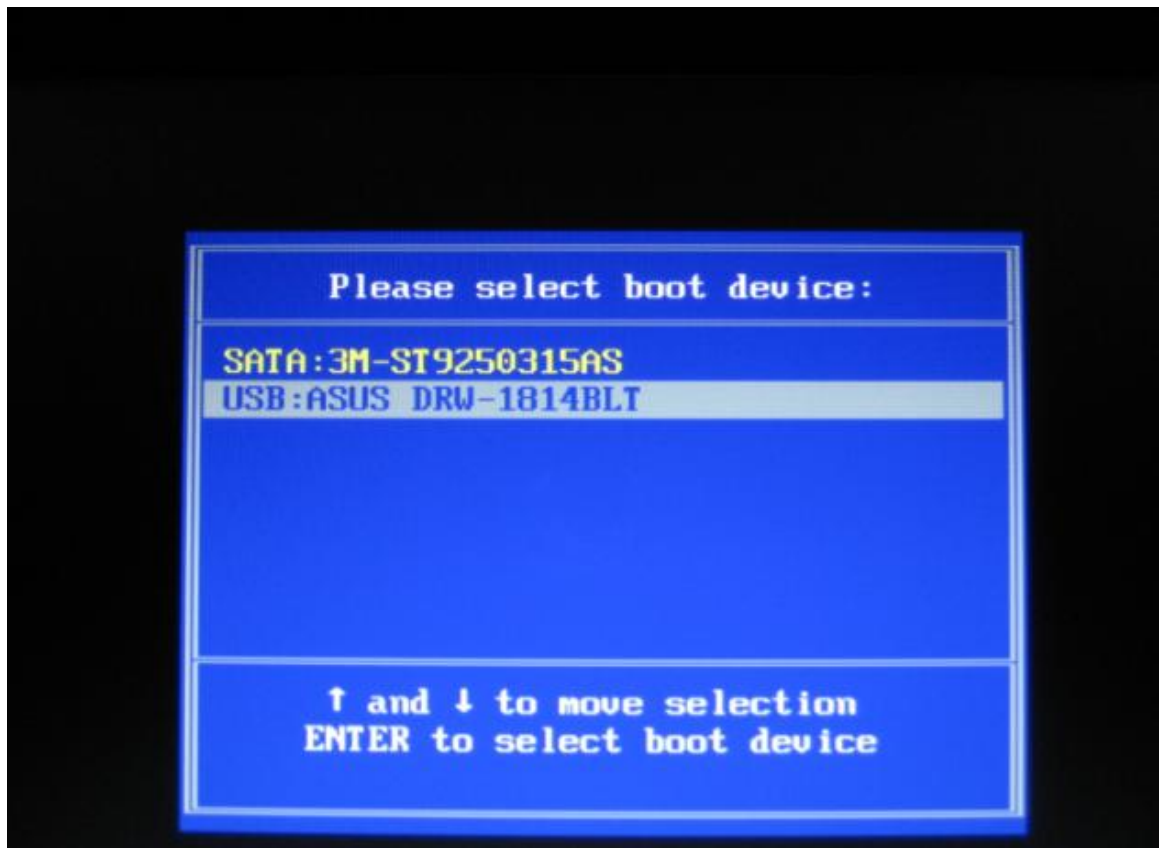
3. Press **<F10>** and select **OK** to save configuration changes and exit.

Install pure windows 7 operating system

When you install your Eee PC to pure Windows 7, no drivers and utilities are installed. You need to manually install the drivers and utilities, which are contained in the Support CD coming with your Eee PC .

Follow the instructions below to install your pure OS on your Eee PC:

1. Connect the power cord to your **Eee PC**.
2. Connect an external optical drive to your **Eee PC** and insert the **DVD into the optical drive**.
3. Power up the machine and press **<ESC>** constantly and **Please Select boot device** screen appears. Select **USB: ******* (may be labeled as the ODD brand name) to boot from the optical drive. Press **<Enter>** and then Press any key to continue.



4. Select where do you want to install your pure OS.
5. Follow the onscreen instructions to complete the installation process.

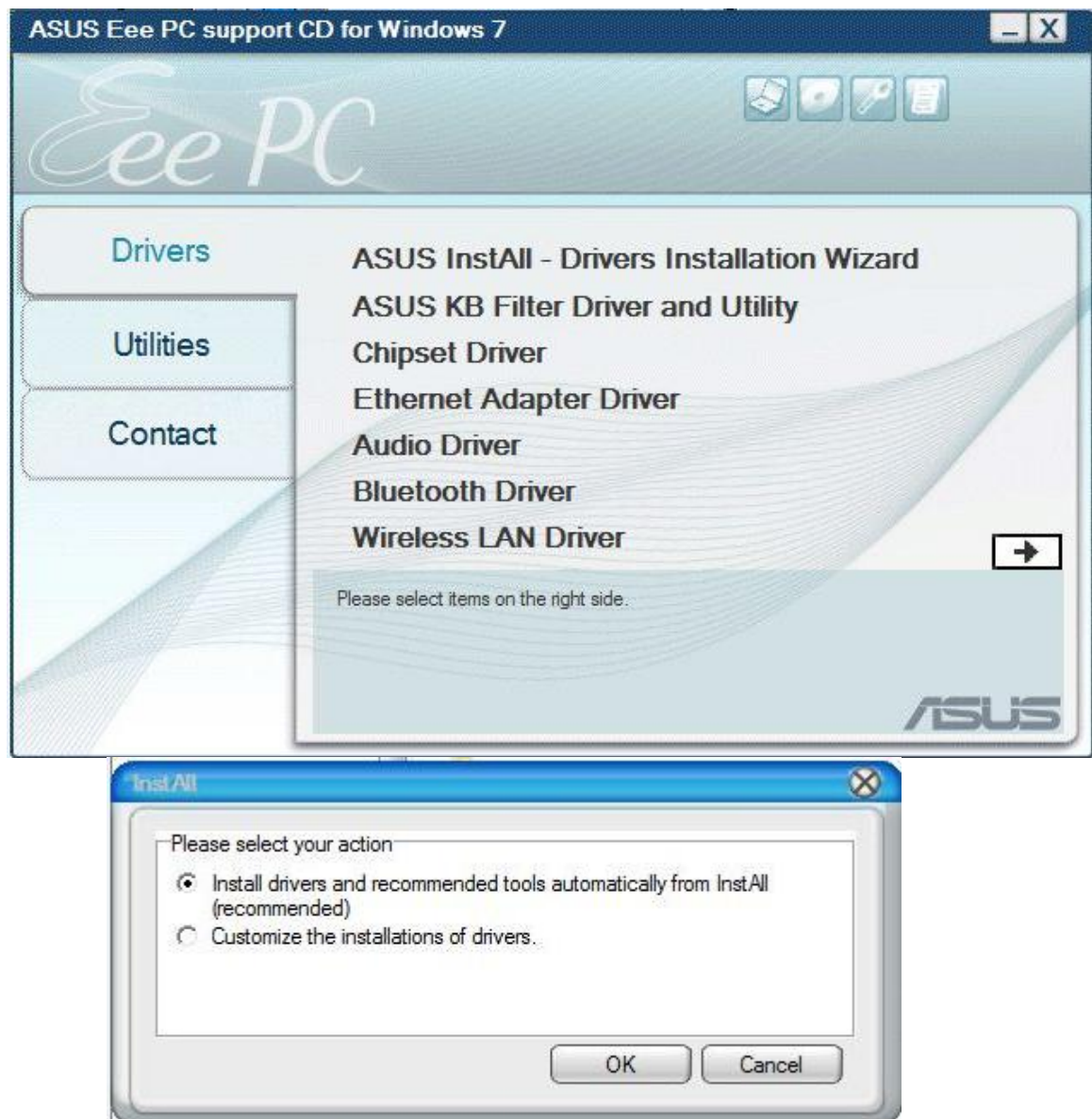
6. Set up your language, time zone, keyboard, computer name, and user name to enter the system

Install required drivers, utilities and applications with Support CD.

The Support CD that comes with your Eee PC contains all required drivers, software applications, and utilities that you can install to avail all the features. (The drivers and utilities bundled in the Support CD may vary by models and are subject to change without notice.)

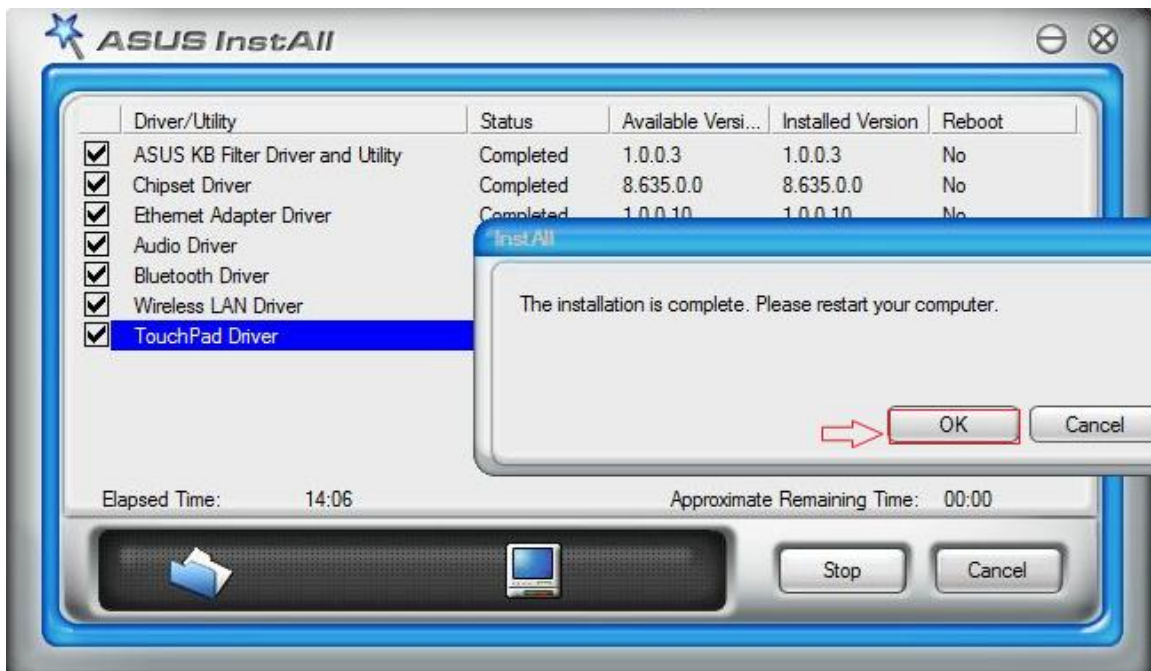
Running Support CD.

1. Insert the Support CD in the external optical drive. The CD automatically displays the drivers menu if Autorun is enabled in your computer.
2. Select "ASUS InstAll-Drivers Installation Wizard" then "OK".



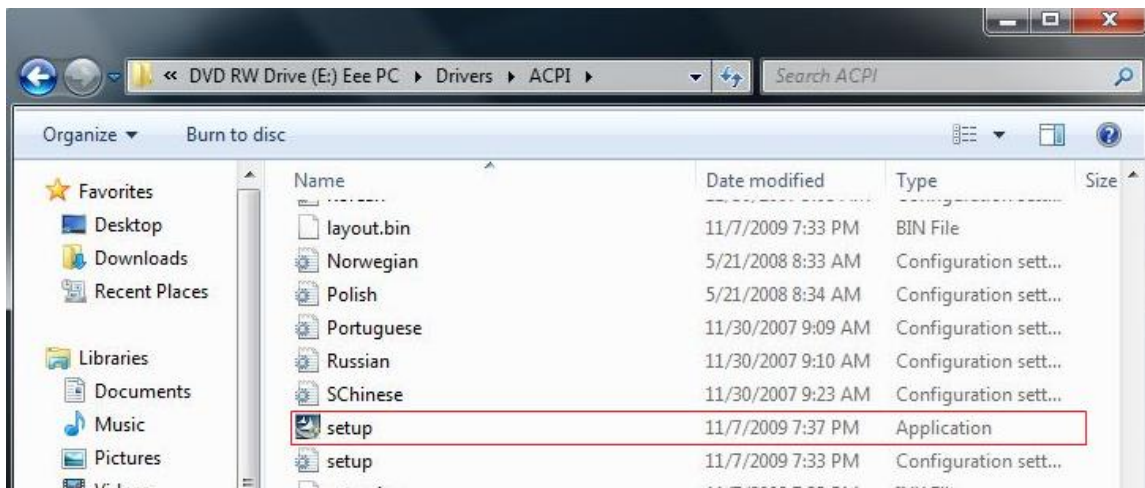
The drivers menu shows available device drivers (for Windows 7) when the system detects installed devices.

3. When the installation is complete, click “OK” to restart your computer



Remark:

If it fails to install some driver or utility by auto- running Support CD, you can open the files in your Support CD and manually install them separately by running their corresponding “Setup.exe”.



You can also download these drivers and utilities from ASUS support download site.

<http://support.asus.com/download/download.aspx?SLanguage=en-us>

If you don't have support CD, please get them from ASUS support site as the link above, decompress these .ZIP files and install them one by one in the following order.

1. KB Filter Driver: Run "Setup.exe".
2. Chipset Driver: Run "Setup.exe".
3. ASUS ACPI Driver and Utility: Run "Setup.exe".
4. Ethernet Adapter Driver: Run "Setup.exe".
5. Audio Driver: Run "Setup.exe".
6. Bluetooth: Run "Setup.exe".
7. Wireless Lan Driver: Run "Setup.exe".
8. Touchpad Driver: Run "Setup.exe".
9. AHCI Driver: Run "2KSETUP.exe".