

Windows[®] XP Edition

Eee PC 1101HAG

Eee PC 1101HGO

**3G Connection Manager
Quick Start Guide**

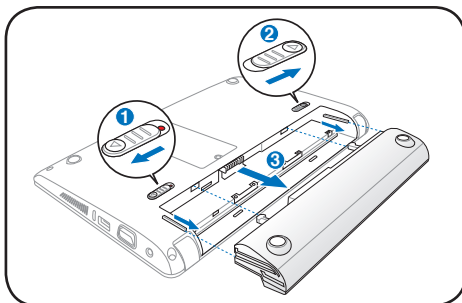
3G Connection Manager

The 3G Connection Manager allows you to easily connect to the Internet from your Eee PC. Simply install your SIM card into your Eee PC, set up a 3G connection, and you can surf the Internet at anytime, anywhere.

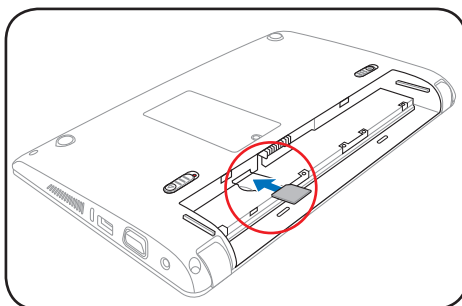
SIM card installation

To install the SIM card

1. Remove the battery pack from Eee PC.



2. Locate the SIM card slot on the top-right corner of the battery pack slot. Gently insert the SIM card into the card slot with the gold contacts facing up until you hear a clicking sound.



- The SIM card and its gold contacts are vulnerable to scratches and bending. While inserting the SIM card, ensure to keep the SIM card at a horizontal angle to the Eee PC to prevent it from malfunctioning.
- Ensure to insert the SIM card until it fits completely.

3. Reinstall the battery pack.

Using 3G Connection Manager



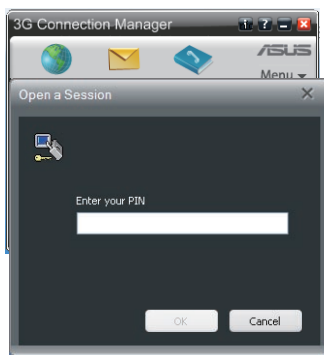
Before using 3G connection, ensure that you have applied for a 3G connection service from your service provider.

To use 3G Connection Manager

1. Double-click **3G Connection Manager** on the desktop.

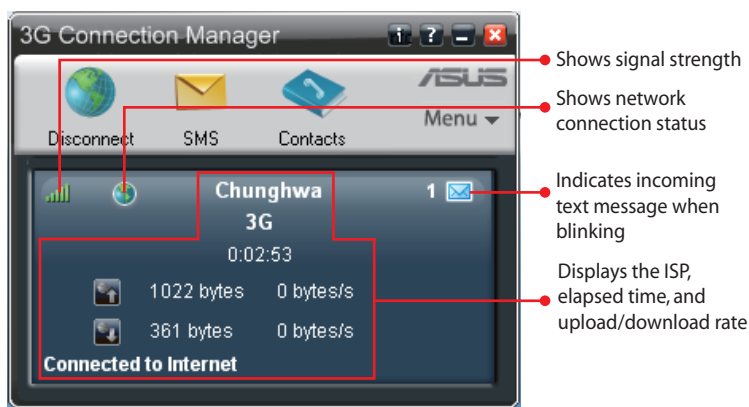
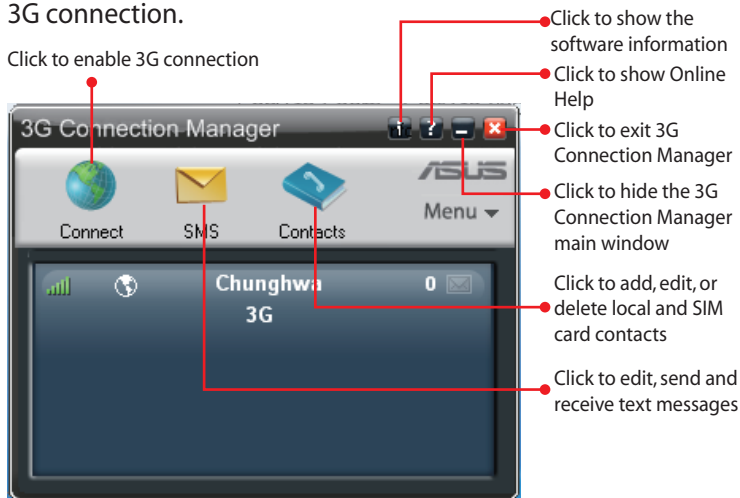




2. Enter the PIN code of your SIM card if prompted.




3. In the 3G Connection Manager window, click **Connect** to enable 3G connection.

Click to enable 3G connection



- The actual data connection speed varies with signal strength.
- If you click  to minimize the 3G Connection Manager window, the application hides and runs in the background. To open the 3G Connection Manager window again, click  in the Notification area.

4. To end the 3G Connection Manager, click **Disconnect** or  in the 3G Connection Manager window.



Setting up the basic settings

To set up the basic settings

- Click **Menu** to access all the functions.
- Click **MENU > Settings** to further set up the basic settings, including **General**, **Internet Connections**, **SMS**, **Security**, and **Network**.
- For detailed information on each setting option, click **MENU > Settings > Help**.

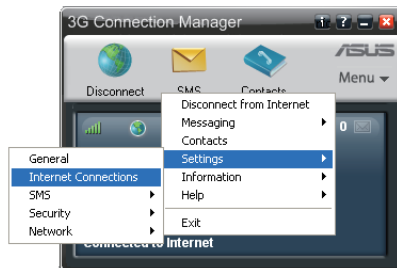


Adding a new internet connection

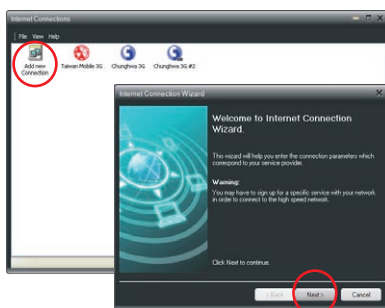
If your service provider cannot be automatically detected, you need to manually add a new internet connection.

To add a connection

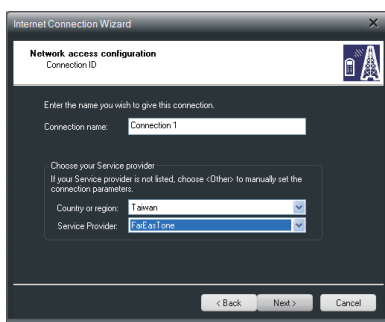
1. Activate **3G Connection Manager**.
2. Click **MENU > Settings > Internet Connections**.



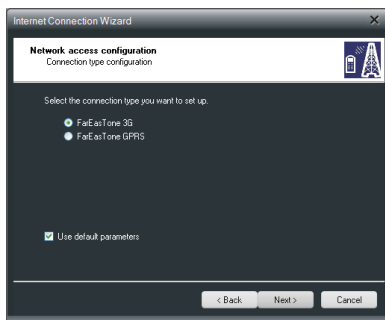
3. Double-click **Add new Connection**, and then the Internet Connection Wizard starts. Click **Next** to continue.



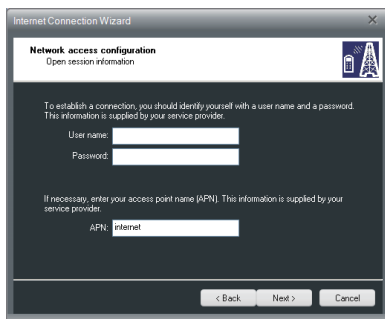
4. Enter the connection name. Select the country where you are located and your service provider.



5. Select the connection type, and then click **Next** to continue.



- If you want to manually set up the connection parameters, click to clear the **Use default parameters** check box, and then click **Next** to set up the parameters provided by your service provider.



6. Click **Finish** to finish the Internet Connection Wizard.



Before taking transportations with electronic device restrictions, such as international flights, ensure to close the **3G Connection Manager** software.

Appendix

RF Exposure information (SAR)

THIS MODEL MEETS INTERNATIONAL GUIDELINES FOR EXPOSURE TO RADIO WAVES

Your mobile device is a radio transmitter and receiver. It is designed not to exceed the limits for exposure to radio waves recommended by international guidelines. These guidelines were developed by the independent scientific organization ICNIRP and include safety margins designed to assure the protection of all persons, regardless of age and health.

The guidelines use a unit of measurement known as the Specific Absorption Rate, or SAR. The ICNIRP SAR limits for mobile devices used by the general public are as follows:

Eee PC 1101HAG / 1101HGO

Max. SAR Measurement (10g)

GSM 900: 0.011 W/kg

DCS 1800: 0.0036 W/kg

WCDMA Band I: 0.00405 W/kg

EC Declaration of Conformity



We, the undersigned,

Manufacturer:	ASUSTek COMPUTER INC.
Address, City:	No. 150, LI-TE RD., PEITOU, TAIPEI 112, TAIWAN R.O.C.
Country:	TAIWAN
Authorized representative in Europe:	ASUS COMPUTER GmbH
Address, City:	HARKORT STR. 21-23, 40880 RATINGEN
Country:	GERMANY

declare the following apparatus:

Product name :	Eee PC
Model name :	Eee PC 1101HAG, Eee PC 1101HGO

conform with the essential requirements of the following directives:

2004/108/EC-EMC Directive

<input checked="" type="checkbox"/> EN 55022:2006+A1	<input checked="" type="checkbox"/> EN 55024:1998+A1:2001+A2:2003
<input checked="" type="checkbox"/> EN 61000-3-2:2006	<input checked="" type="checkbox"/> EN 61000-3-3:1995+A1:2001+A2:2005
<input type="checkbox"/> EN 55013:2001+A1:2003+A2:2006	<input type="checkbox"/> EN 55020:2007

1999/5/EC-R &TTE Directive

<input type="checkbox"/> EN 300 328 V1.7.1(2006-05)	<input checked="" type="checkbox"/> EN 301 489-1 V1.8.1(2008-04)
<input type="checkbox"/> EN 300 440-1 V1.4.1(2008-05)	<input type="checkbox"/> EN 301 489-3 V1.4.1(2002-08)
<input type="checkbox"/> EN 300 440-2 V1.2.1(2008-03)	<input type="checkbox"/> EN 301 489-4 V1.3.1(2002-08)
<input checked="" type="checkbox"/> EN 301 511 V9.0.2(2003-03)	<input checked="" type="checkbox"/> EN 301 489-7 V1.3.1(2005-11)
<input checked="" type="checkbox"/> EN 301 908-1 V3.2.1(2007-05)	<input type="checkbox"/> EN 301 489-9 V1.4.1(2007-11)
<input type="checkbox"/> EN 301 908-2 V3.2.1(2007-05)	<input type="checkbox"/> EN 301 489-17 V1.2.1(2002-08)
<input type="checkbox"/> EN 301 893 V1.4.1(2005-03)	<input checked="" type="checkbox"/> EN 301 489-24 V1.4.1(2007-09)
<input type="checkbox"/> EN 50360:2001	<input type="checkbox"/> EN 302 326-2 V1.2.2(2007-06)
<input type="checkbox"/> EN 50371:2002	<input type="checkbox"/> EN 302 326-3 V1.3.1(2007-09)
<input checked="" type="checkbox"/> EN 62311:2008	<input type="checkbox"/> EN 301 357-2 V1.3.1(2006-05)
<input type="checkbox"/> EN 50385:2002	

2006/95/EC-LVD Directive

<input checked="" type="checkbox"/> EN 60950-1:2001+A11:2004	<input type="checkbox"/> EN60065:2002+A1:2006
--	---

CE marking



(EC conformity marking)

Position : CEO

Name : Jerry Shen

Declaration Date: Jul. 30, 2009

Year to begin affixing CE marking:2009

Signature : _____

