


***Asus Mobile Phone Tool Installation on
EeePC (Linux)***

Introduction

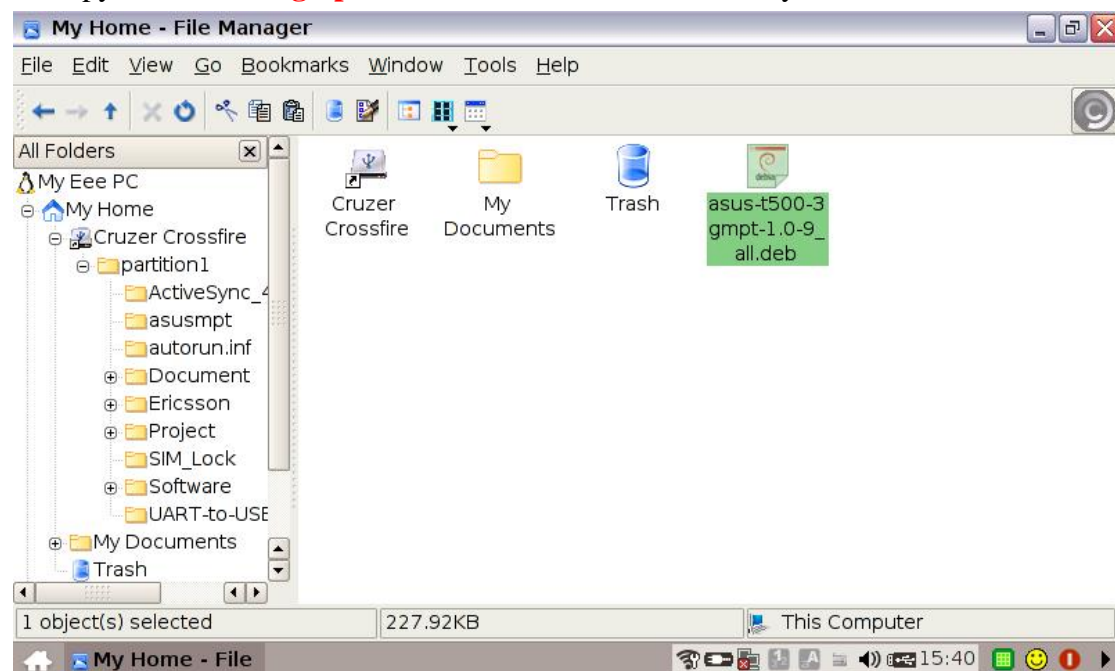
The purpose of this document is teaching user how to install Asus mobile phone tool on EeePC.

Requirement

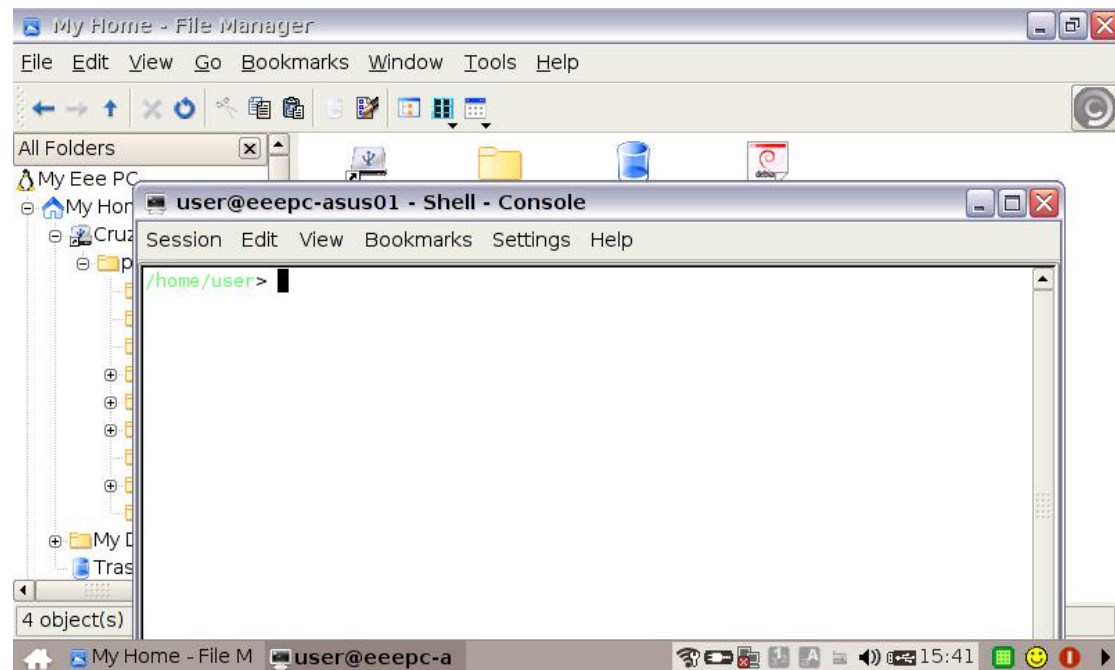
Hardware
EeePC x 1 USB cable x 1 Asus T500 x 1 SIM card (Enable data network service) x 1
Software
 asus-t500-3gmpt-1.0-9_all.deb

Installation

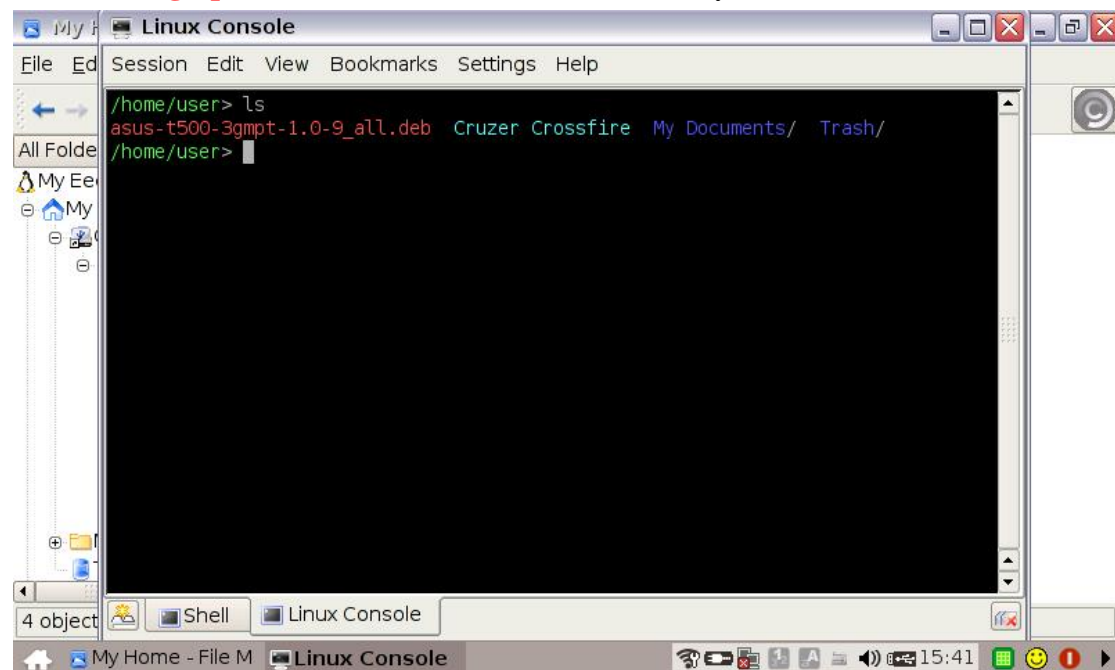
1. Boot up EeePC
2. Copy “**asus-t500-3gmpt-1.0-9_all.deb**” to home directory



3. Open a Linux terminal (“File Manager” → “Tools” → “Open Console Window”)

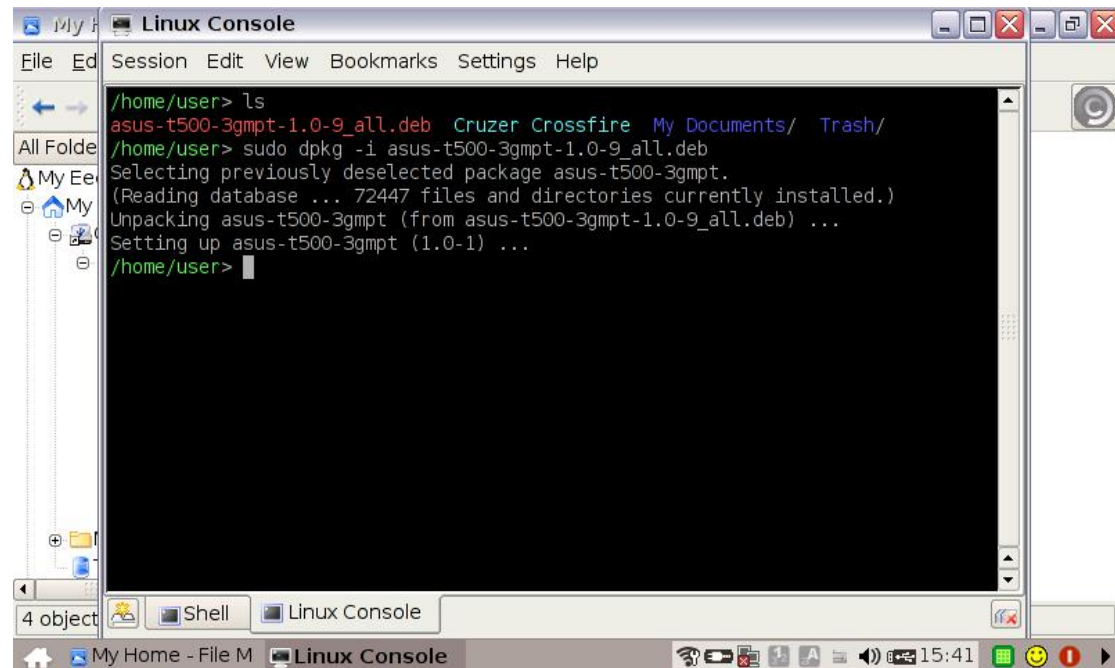


You can use “ls” command to see files in /home/user directory. You should see the **asus-t500-3gmpt-1.0-9_all.deb** in /home/user directory.



4. Install “**asus-t500-3gmpt-1.0-9_all.deb**”

Please type “**sudo dpkg -i asus-t500-3gmpt-1.0-9_all.deb**” in prompt.

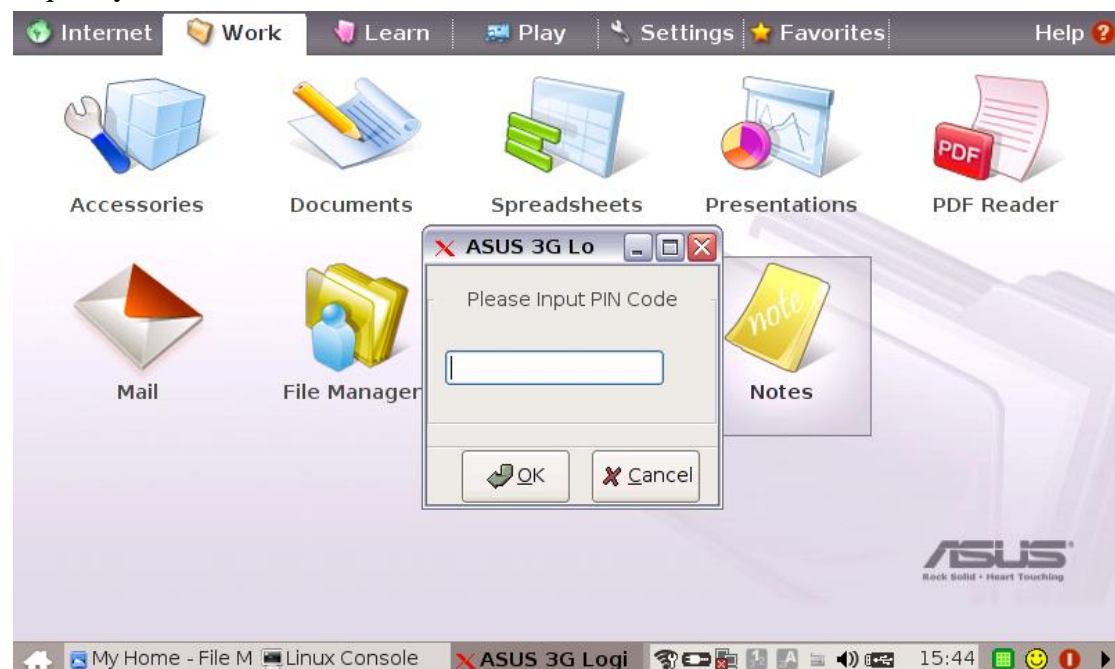


```
Linux Console
File Edit Session Edit View Bookmarks Settings Help

/home/user> ls
asus-t500-3gmpt-1.0-9_all.deb  Cruzeiro  Crossfire  My Documents/  Trash/
/home/user> sudo dpkg -i asus-t500-3gmpt-1.0-9_all.deb
Selecting previously deselected package asus-t500-3gmpt.
(Reading database ... 72447 files and directories currently installed.)
Unpacking asus-t500-3gmpt (from asus-t500-3gmpt-1.0-9_all.deb) ...
Setting up asus-t500-3gmpt (1.0-1) ...
/home/user>
```

5. Connect the T500 to your EeePC via USB cable.

After a while, if your SIM card PIN code is enabled, you’ll see a prompt window to request you enter the SIM PIN code.



If you don’t have SIM PIN code or you enter the correct PIN code, then you’ll see the Asus mobile phone tool.



As you see, you can see the signal strength, operator name, and connection status in left-down corner of Asus mobile phone tool.

7. Connect to Internet

Please Click “Connect” button, then you’ll see the connection status is “Dialing” in left-down corner of Asus mobile phone tool.



If the connection is success, you’ll see the current transfer bytes.

