

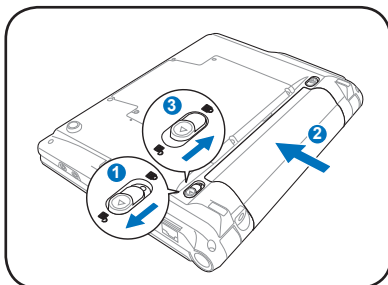
Eee PC

Quick Use Guide

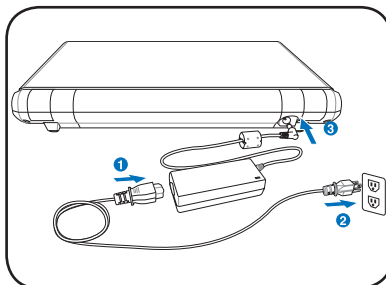
Powering on your Eee PC

These are only quick instructions for using your Eee PC. Read the full manual for detailed information.

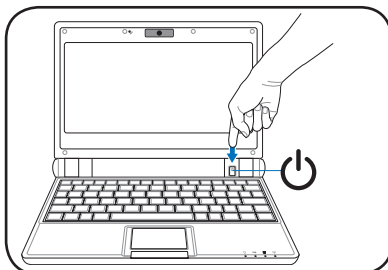
1. Install the battery pack



2. Connect the AC power adapter



3. Turn ON the Eee PC



Damage may occur if you use a different adapter to power the Eee PC. You may damage both your battery pack(s) and the Eee PC with a faulty AC-DC adapter.



When you open the display panel, do not force it down to the table or else the hinges may break! Never lift the Eee PC by the display panel!



Remember to fully charge the battery before first use and whenever it is depleted to prolong battery life.

Status Indicators

Status indicators represent various hardware/software conditions.



Power Indicator



Battery Charge Indicator



Hard Disk Drive (HDD)
Indicator




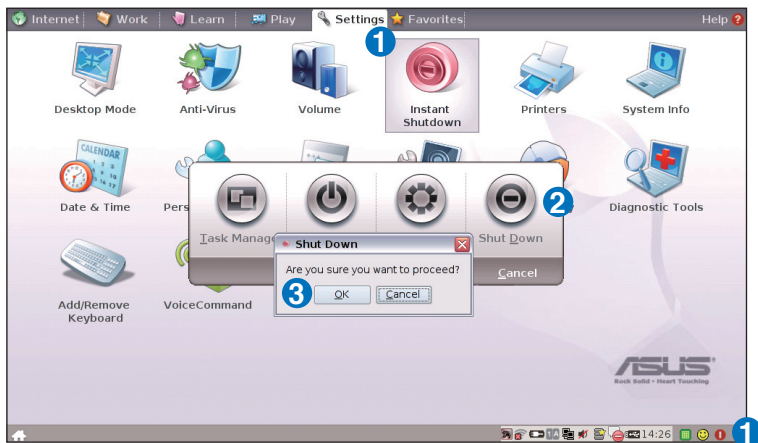
Wireless Indicator

Powering off your Eee PC

Do the following instructions to turn down your Eee PC.

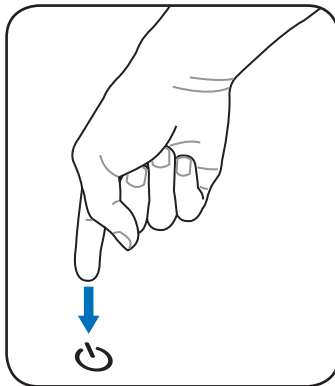
A.

1. Click the red power switch  in the Notification area.
Or, click **Instant Shutdown** from the **Settings** tab and select **Shutdown**.
2. Select **Shut Down** from the dialogue box.
3. Select **OK** to proceed.



B.

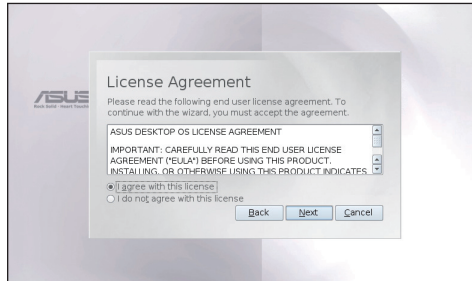
Or, press the power switch of the Eee PC directly, and follow the previous instructions to shut down your Eee PC.



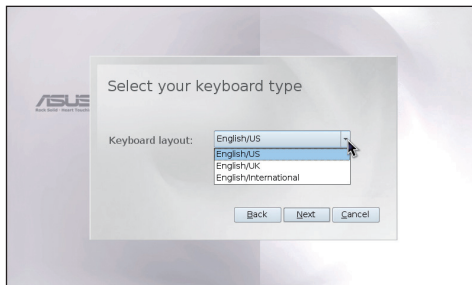
Launching First Run Wizard

For the first time you start your Eee PC, the First Run Wizard will auto-launch and lead you through setting up your preferences and some basic information. Follow the wizard instructions to finish the initiation.

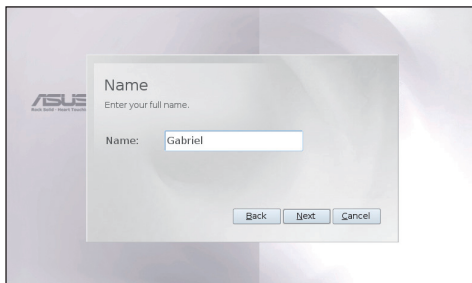
1. Toggle **I agree with this license** and click **Next** to continue.



2. Select your keyboard type and click **Next** to continue.



3. Enter your **User Name**. Click **Next** to continue.



4. Follow the on-screen instructions to complete the first run wizard.



ASUS Eee PC also supports Windows® XP operating system. Refer to user guide for detailed instructions and notices on installing the WinXP SP2 32 bit operating system.

Configuring a network connection

Wireless network connection

1. Ensure that the wireless LAN function is enabled.

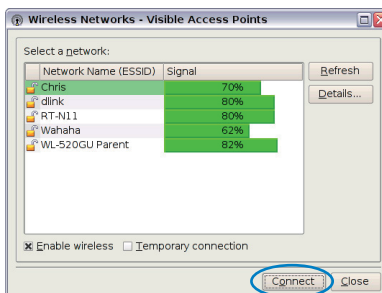


Activate the wireless LAN function by pressing + (<Fn> + <F2>) before configuring a wireless network connection if needed.

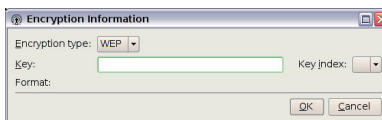
2. Click **Wireless Networks** from **Internet** tab.



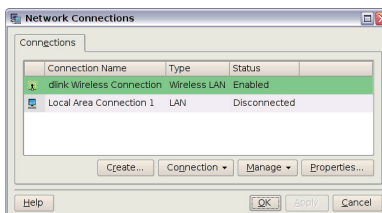
3. Select the wireless access point you want to connect to from the list and click **Connect** to build the connection. Ensure that the box before **Enable wireless** is checked.



4. When connecting, you may have to enter a password.



5. After a connection has been established, the connection is shown on the list.



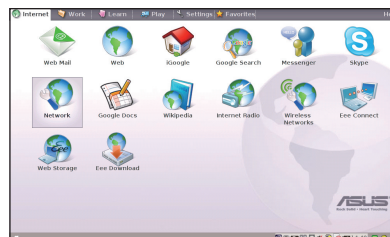
6. You can see the wireless signal strength bars in the Notification area.



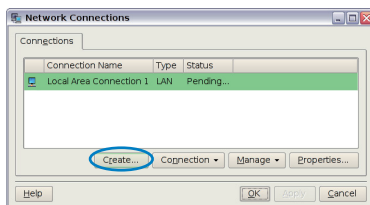
Local Area Network

Using a dynamic IP:

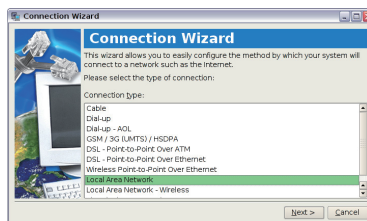
1. From the **Internet** tab, select **Network** to start the configuration.



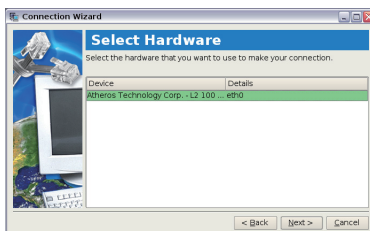
2. Click **Create** to create a network connection.



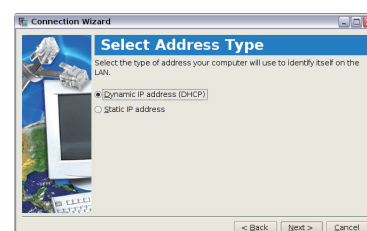
3. Select the type of connection you are using and click **Next**.



4. Select the hardware that you want to use to make your connection and click **Next**.

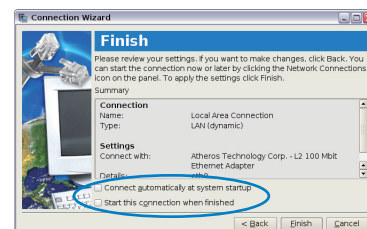


5. Toggle the first option Dynamic IP address (DHCP) and click **Next**.



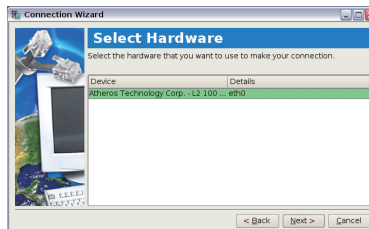
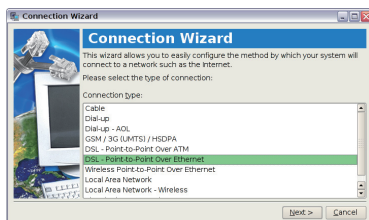
6. Enter a name for this connection and click **Next**.

7. Click **Finish** to apply the settings or click **Back** to make changes. Click the box before **Connect automatically at system startup** or before the box **Start this connection when finished** based on your needs.

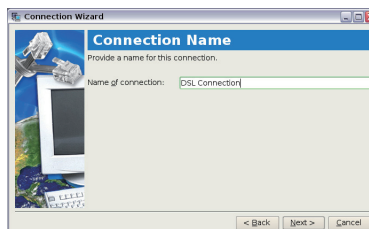


Point-to-Point Protocol over Ethernet (PPPoE)

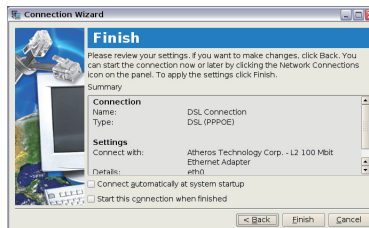
1. Repeat the step 1–2 of Using a static IP to start the PPPoE network configuration.
2. Select the type of connection 3. Select the hardware that you are using and click **Next**. you are using and click **Next**. you want to use to make your connection and click **Next**.



4. Enter your user and password 5. Enter a name for this connection and click **Next**. and click **Next**.. connection and click **Next**.



6. Click **Finish** to apply the settings or click **Back** to make changes.



This image shows a single sheet of white paper with horizontal ruling lines. The lines are evenly spaced and run across the width of the page. There are no margins, text, or other markings on the paper.