



netpal™

Quick Start Guide



Safety Precautions

The following safety precautions will increase the life of the Disney Netpal. Follow all precautions and instructions. Except as described in this manual, refer all servicing to qualified personnel.



Disconnect the AC power before cleaning. Wipe the Disney Netpal using a clean cellulose sponge or chamois cloth dampened with a solution of nonabrasive detergent and a few drops of warm water and remove any extra moisture with a dry cloth.



DO NOT place on uneven or unstable work surfaces.



DO NOT place or drop objects on top.



DO NOT expose to dirty or dusty environments.



DO NOT expose to strong magnetic or electrical fields.



DO NOT press or touch the display panel.



DO NOT expose to or use near liquids, rain, or moisture.



DO NOT leave the Disney Netpal on your lap or any part of the body.



Ambient temperatures between 5°C (41°F) and 35°C (95°F)

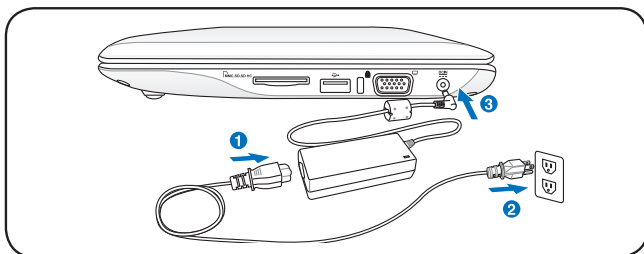


CAUTION! ELECTRICALLY OPERATED PRODUCT. THIS IS NOT A TOY. TO AVOID RISK OF ELECTRIC SHOCK OR FIRE, IT SHOULD NOT BE PLAYED WITHOUT ADULT SUPERVISION OR PLACED WHERE SMALL CHILDREN CAN REACH.

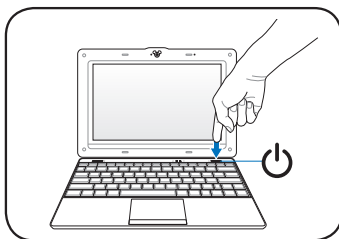
Powering on your Disney Netpal

These are only quick instructions for using your Disney Netpal.

1. Connect the AC power adapter



2. Turn ON the Disney Netpal



Damage may occur if you use a different adapter to power the Disney Netpal. You may damage both your battery pack(s) and the Disney Netpal with a faulty AC-DC adapter.



- When you open the display panel, do not force it down to the table or else the hinges may break! Never lift the Disney Netpal by the display panel!
- Only use battery packs and power adapters supplied with this Disney Netpal or specifically approved by the manufacturer or retailer for use with this model or else damage may occur to the Disney Netpal. The output voltage of this adapter is +12Vdc, 3A.



Remember to fully charge the battery before first use and whenever it is depleted to prolong battery life.

First-time Startup

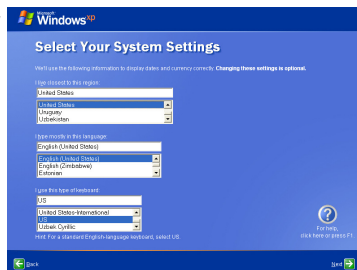
For the first time you start your Disney Netpal, the Windows wizard will launch automatically and lead you through setting up your preferences and some basic information.

Follow the wizard instructions to finish the initialization:

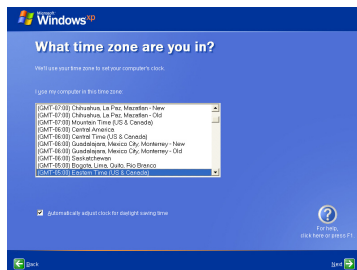
1. The **Welcome** message appears. Click **Next** to continue.



2. Select your system settings by specifying the region you are in, the language you use and the keyboard type you use. Click **Next** to continue.



3. Select the time zone you are in and click **Next** to continue.



4. Follow the onscreen instructions to finish the initialization and to register with Microsoft.

Parental Control

Disney Desktop helps you keep your child safe from inappropriate web content and applications. It allows you to configure how you want your child to use this Disney Netpal, including programs which they can and cannot use and a safe environment for your children when they go online.



For service and support, visit our multi-language web site at <http://support.asus.com>.

Setting the master password and creating an account

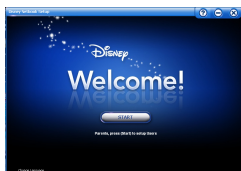
1. Double-click the **Parental Control** icon on the desktop to start the program.



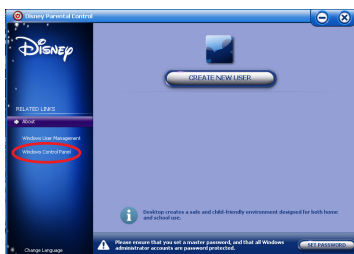
Parental Control



After the Windows initialization, you will be asked to configure **Parental Control**. You can configure the settings whenever you want by clicking the shortcut on the desktop.




2. Click **Windows Control Panel** on the left pane to set the administrator password.





3. Refer to the User Manual for the following instructions to finish the Disney Parental Control configuration.

Wireless network connection

1. Double-click the crossed wireless network icon  in the Notification area.

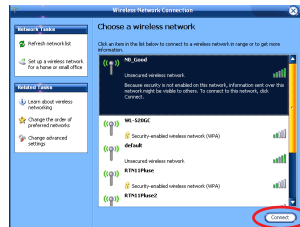


If the wireless connection icon does not show in the Notification area. Activate the wireless LAN function by pressing  +  (<Fn> + <F2>) before configuring a wireless network connection.

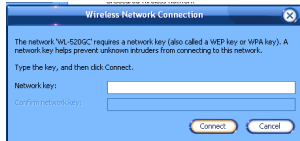
2. Select the wireless access point you want to connect to from the list and click **Connect** to build the connection.




If you cannot find the desired access point, click **Refresh network list** in the left pane and search in the list again.

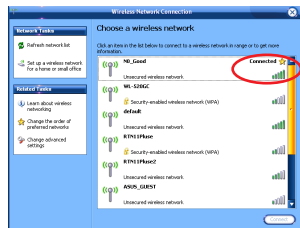




3. When connecting, you may have to enter a password.



4. After a connection has been established, the connection is shown on the list.

5. You can see the wireless network icon  in the Notification area.




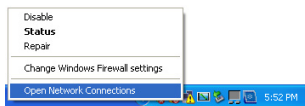
The wireless connection icon disappears when you Press  +  (<Fn> + <F2>) to disable the WLAN function.

Wired network connection

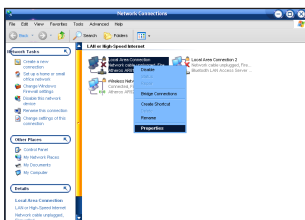
To establish a wired network, follow the instructions below:

Using a dynamic IP:

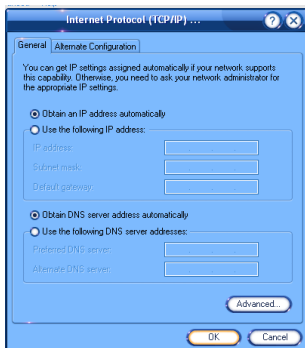
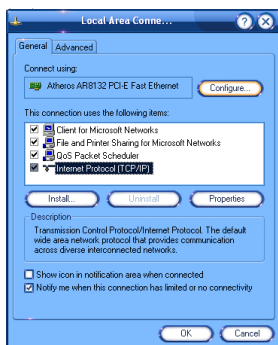
1. Right-click the network icon with a yellow warning triangle  on the Windows® taskbar and select **Open Network Connections**.



2. Right-click **Local Area Connection** and select **Properties**.

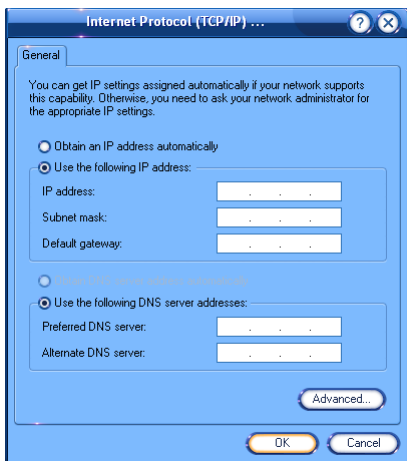


3. Click **Internet Protocol (TCP/IP)** and click **Properties**.
4. Click **Obtain an IP address automatically** and click **OK**.



Using a static IP:

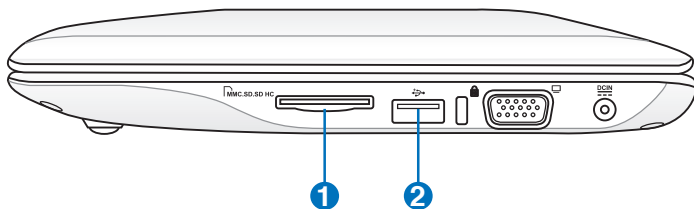
1. Repeat the step 1–3 of Using a dynamic IP to start the static IP network configuration.
2. Click **Use the following IP address**.
3. Enter the IP address, Subnet mask and Gateway from your service provider.
4. If needed, enter the preferred DNS Server address and alternative address.
5. After entering all the related values, click **OK** to build the network connection.



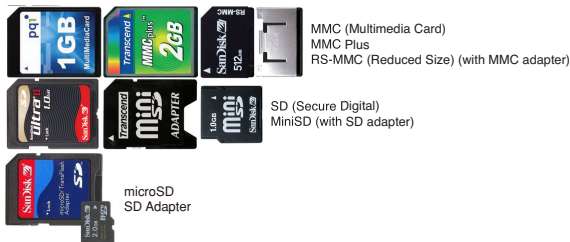
Contact your Internet Service Provider (ISP) if you have problems connecting to the network.

Connecting removable devices

You can connect removable devices based on your needs.



1 Memory Card Slot



2 USB Port (2.0/1.1)

USB External Optical Disk Drive



USB External Hard Disk Drive



USB Flash Memory Disk



WLAN Setup FAQ

If you follow the instructions in the manual and fail to build a wireless network connection successfully, refer to the frequently asked questions below for quick solutions to your problems. For more information and advanced wireless network configuration, please visit <http://livesupport.asus.com/eeewirelessxphowto.html>.



Ensure that the wireless LAN function is enabled before configuring a wireless network connection. If not, press <Fn> + <F2> to activate the wireless LAN function.

1. I am asked to enter the key for the wireless connection.

The network you would like to connect is encrypted, you need to enter the correct key before using this network. Unless you have your own wireless router, you will always need a correct key for the encrypted wireless network.

2. Is my USB 3G wireless data card/wireless router compatible with Disney Netpal Windows XP OS?

Contact the wireless card/router manufacturer if you have a compatible issue.

3. I cannot build a wireless connection to my wireless router.

Try the following solutions.

- Restart your router and ensure that the router setup is correct.
- Cancel the encryption key (if there's one) and try again.
- The distance from router influences the wireless signal strength. Weak signal strength may fail the connection.