



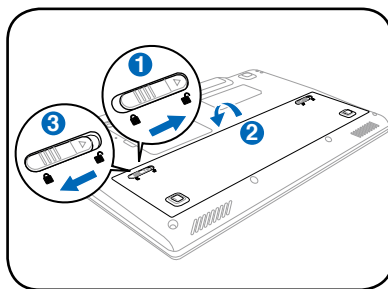
Windows® XP Edition

Quick Use Guide

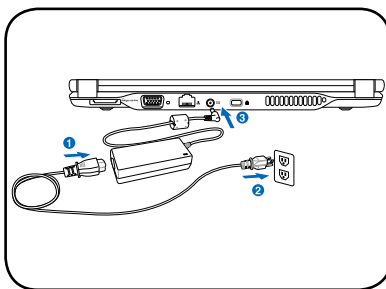
Powering on your Eee PC

These are only quick instructions for using your Eee PC. Read the full manual for detailed information.

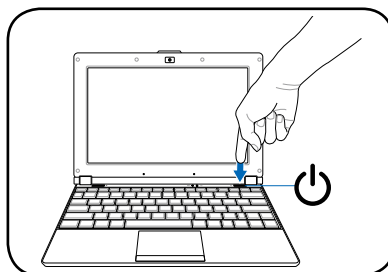
1. Install the battery pack



2. Connect the AC power adapter



3. Turn ON the Eee PC



Damage may occur if you use a different adapter to power the Eee PC. You may damage both your battery pack(s) and the Eee PC with a faulty AC-DC adapter.



When you open the display panel, do not force it down to the table or else the hinges may break! Never lift the Eee PC by the display panel!



Remember to fully charge the battery before first use and whenever it is depleted to prolong battery life.

Status Indicators

Status indicators represent various hardware/software conditions.

 Battery Charge Indicator

 Solid State Drive (SSD) Indicator



Capital Lock Indicator

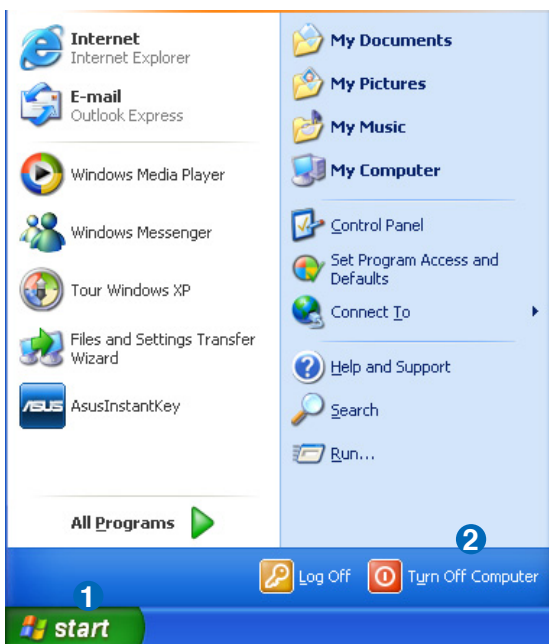


Wireless/Bluetooth Indicator

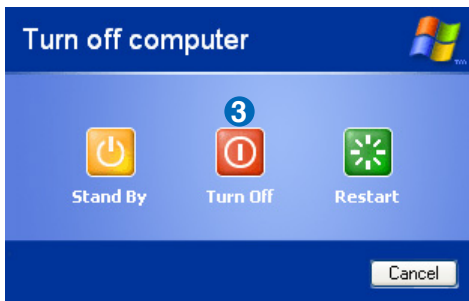
Shutdown

Do the following instructions to turn down your Eee PC.

1. Click the **start** button to display the start menu.
2. Click **Turn Off Computer**.



3. Select **Turn Off** to power off your Eee PC.




Launching for the First Time

For the first time you start your Eee PC, the Windows wizard will launch automatically and lead you through setting up your preferences and some basic information. Follow the wizard instructions to finish the initialization.

Configuring a network connection

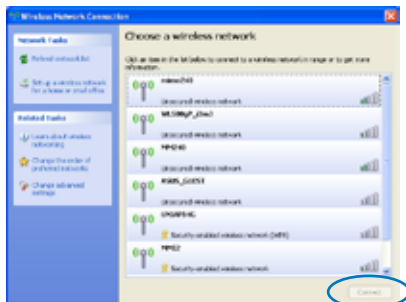
Wireless Network Connection

1. Double-click the crossed wireless network icon  in the Notification area.



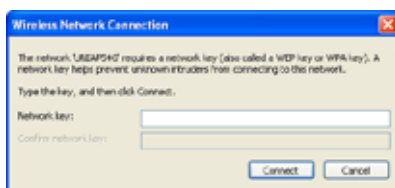
If the wireless connection icon does not show on the taskbar. Activate the wireless LAN function by pressing **[Fn] + [F2] (<Fn> + <F2>)** before configuring a wireless network connection.

2. Select the wireless access point you want to connect to from the list and click **Connect** to build the connection.

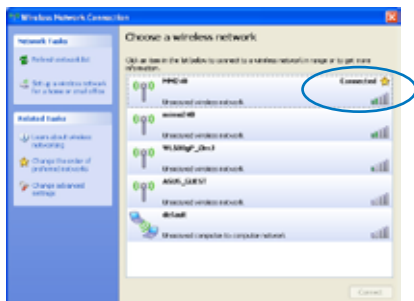


If you cannot find the desired access point, click **Refresh network list** in the left pane and search in the list again.

3. When connecting, you may have to enter a password.





4. After a connection has been established, the connection is shown on the list.



5. You can see the wireless network icon in the Notification area.




The wireless connection icon disappears when you Press  +  (<Fn> + <F2>) to disable the WLAN function.

Local Area Network

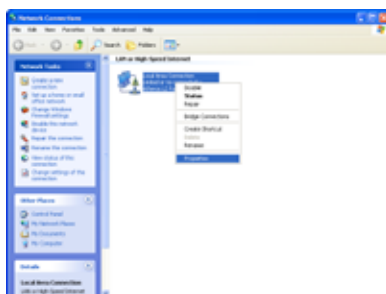
To establish a wired network, follow the instructions below:

Using a dynamic IP:

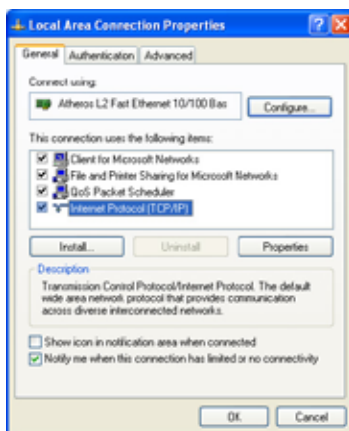
1. Right-click the network icon with a yellow warning triangle  on the Windows® taskbar and select **Open Network Connections**.



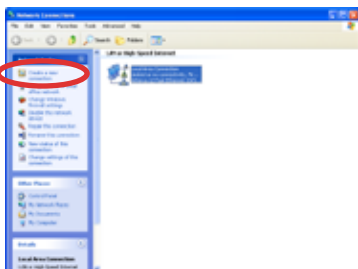
2. Right-click **Local Area Connection** and select **Properties**.



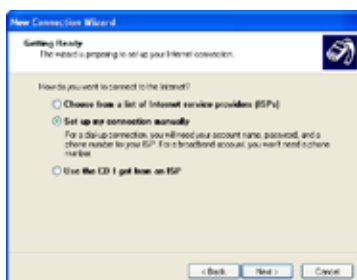
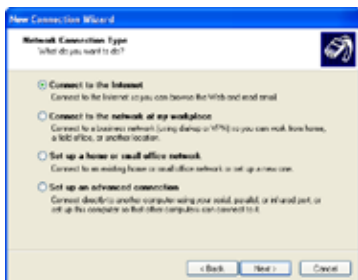
3. Click **Internet Protocol (TCP/IP)** and click **Properties**.
4. Click **Obtain an IP address automatically** and click **OK**.



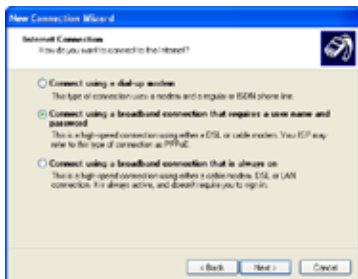
5. Click **Create a new connection** to start the New Connection Wizard.
6. Click **Next**.



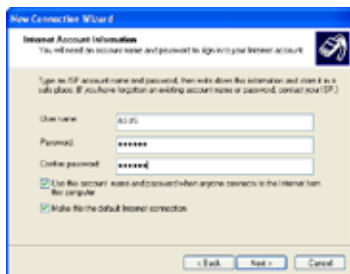
7. Select **Connect to the Internet** and click **Next**.
8. Select **Set up my connection manually**.



9. Select your connection type and click **Next**.
10. Enter your ISP Name and click **Next**.



11. Enter your User name and Password. Click **Next**.



12. Click **Finish** to finish the configuration.



13. Enter your user name and password. Click **Connect** to connect to the Internet.



Using a static IP:

1. Repeat the step 1–3 of Using a dynamic IP to start the static IP network configuration.
2. Click **Use the following IP address**.
3. Enter the IP address, Subnet mask and Gateway from your service provider.
4. If needed, enter the preferred DNS Server address and alternative address.
5. After entering all the related values, click **OK** to build the network connection.



Contact your Internet Service Provider (ISP) if you have problems connecting to the network.