



P535

# Quick Start Guide

---



# Package contents

Check your P535 package for the following items:

- ✓ ASUS P535 device
- ✓ Battery
- ✓ AC Adapter
- ✓ Mini-USB cable
- ✓ Headset
- ✓ Stylus
- ✓ Car cell phone charger\*
- ✓ Car Kit (PDA holder and windshield suction pedestal)\*
- ✓ Protection case
- ✓ Getting Started CD
- ✓ User Manual
- ✓ Quick Start Guide
- ✓ Warranty Card

\* *optional*

---

**NOTE:**

If any of the above items is damaged or missing, contact your retailer.

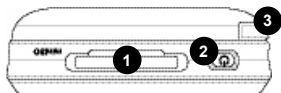
---

**CAUTION:**

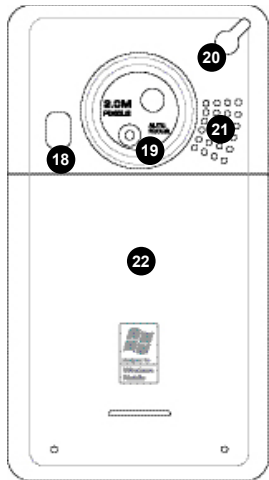
- To reduce risk of fire, use only correct battery type. Refer to "Installing the SIM card and battery" section for details.
- Do not attempt to disassemble or service the battery pack.
- Dispose of used batteries properly. Inquire from local authorities for proper disposal of battery.

# Getting to know your P535

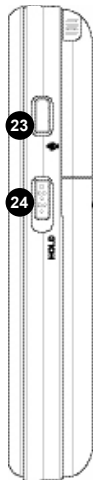
## Layout



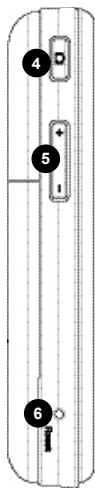
Top features



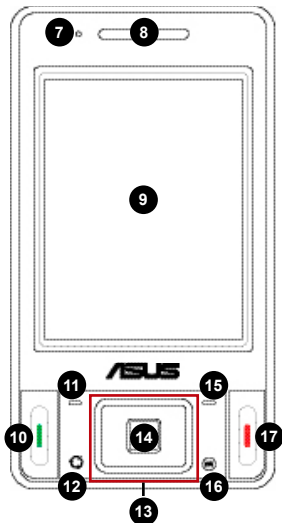
Rear features



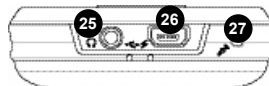
Right side features



Left side features



Front features



Bottom features

## Device components description

| No. | Item                      | Description  |
|-----|---------------------------|--|
| 1   | MiniSD slot               | Allows you to insert a MiniSD storage card.  |
| 2   | Power button              | Press once to set suspend mode or to wake device from sleep mode. Press and hold to turn the power ON or OFF.  |
| 3   | Stylus                    | Use the stylus to write, draw, or select items on the touch screen.  |
| 4   | Camera/Shutter button     | Press to launch the camera. In camera mode, half-press to auto-focus then full-press to take a picture. In video mode, full-press to start recording video and press again to stop.  |
| 5   | Volume controller         | Press the arrow buttons to adjust the volume.  |
| 6   | Reset button              | Using the stylus, press reset button to soft-reset your device.  |
| 7   | Notification LED          | This multi-color LED notifies the following: <ul style="list-style-type: none"><li>• <b>Green</b> - Phone fully charged.</li><li>• <b>Flashing green</b> - Network detected.</li><li>• <b>Red</b> - Phone is charging.</li><li>• <b>Flashing red</b> - Event notification.</li><li>• <b>Flashing blue</b> - Bluetooth® or WLAN(IEEE 802.11b/g) ON.</li><li>• <b>Flashing blue and green</b> - GPS is ON.</li></ul> |
| 8   | Earpiece receiver         | Allows you to listen to incoming/outgoing calls.   |
| 9   | LCD touch screen          | This 2.8-inch, 65536-color, 240 x 320-resolution, touchscreen TFT LCD allows you to write, draw, or make selections using the stylus.  |
| 10  | Call key                  | Press to receive an incoming call or make a call.  |
| 11  | Left Soft key             | Performs the command indicated above the button.   |
| 12  | Mode/Task switcher button | Allows you to switch applications and tasks. Press and hold this button to turn on/off the flashlight.   |
| 13  | Navigation buttons        | Use to move through menus. Press the center to run an application or in camera mode, press to take a picture.  |

## Device components description

| No. | Item                  | Description   |
|-----|-----------------------|---|
| 14  | Action button         | Press to carry out the task of selected item.   |
| 15  | Right Soft key        | Performs the task indicated above the button.   |
| 16  | Ok or Close button    | Press to confirm a command or press to close/exit an open application.  |
| 17  | End button            | Press to end a call.  |
| 18  | Camera flashlight     | Allows you to capture images in a dim environment.<br>Press and hold the mode switcher button to turn this flashlight on/off. |
| 19  | Camera lens           | This 2-megapixel camera comes with Auto-Focus (AF) lens and flash light features.   |
| 20  | GPS antenna connector | Allows you to install an external GPS antenna for better signal reception.  |
| 21  | Speaker               | Allows you to listen audio media and phone calls.   |
| 22  | Battery compartment   | Contains the battery that supplies power to the device.   |
| 23  | Voice recorder button | Press to launch the record application to record voice.   |
| 24  | Hold button           | Slide to enable or disable all keys including the LCD touch screen.   |
| 25  | Earphone port         | Plug headset accessory to this port.  |
| 26  | Mini-USB connector    | Use this connector to synchronize your data or to charge the battery.   |
| 27  | Mic                   | Used to make or receive phone calls, record sounds, record voice, or say voice commands.                                      |

# Getting your device ready

Before you can start using your device, you need to install a Subscriber Identity Mode (SIM) card and a charged battery. A SIM card contains your phone number, subscriber details, phonebook, and additional phone memory.

## Installing the SIM card and battery

1. Remove the battery compartment cover then remove battery.

---

**NOTE:** To prevent data loss, the device automatically shuts down after you open the battery compartment.

---

2. Insert the SIM card with its gold contacts facing down and the notched corner oriented to the upper left corner of the slot.
3. Replace the battery into the compartment with its copper contacts properly aligned to the copper conductor on the device.
4. Replace battery compartment cover.

---

**CAUTION:** Use only an ASUS qualified battery for this device.

---

## Charging the battery

The bundled battery pack is shipped only partially charged. Make sure to charge the battery at least four hours before using it for the first time.

To charge the battery:

1. Connect the AC adapter plug to the mini-USB connector at the bottom of the device.
2. Connect the AC power plug to a grounded wall socket or power strip.

---

**NOTE:**

- The notification LED turns red and the battery icon appears on the status bar while the battery is charging.
  - If your battery gets totally discharged, recharge it for at least twenty minutes before you can turn it back on.
-

## Powering your device

After charging the battery, you are now ready to use your device.

To power on your device:

1. Press and hold the power button to turn ON the device.
2. Follow the succeeding screen instructions to setup your Windows Mobile-based device.

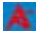
## The Today screen

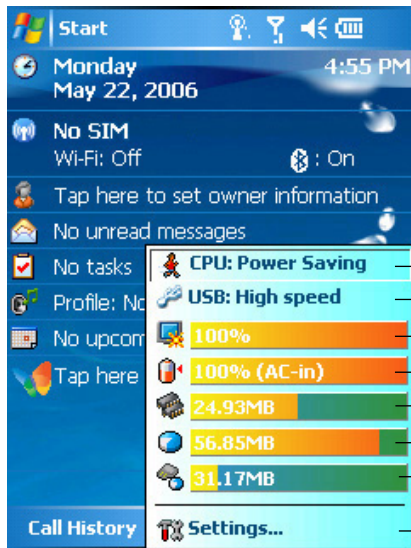
The Today screen displays information useful to you.



## ASUS Status icon

The ASUS status icon allows you to easily check and see the current status of the following device components: CPU, USB, LCD Brightness, Battery power, Memory, MiniSD card, and device storage.

To check the status of these components, tap the ASUS Status icon  on the Today screen.



CPU: Allows you to set the CPU mode. Set to Automatic Mode to automatically change the CPU speed according to the CPU loading.

USB: Allows you to set the USB connection mode.

Brightness: Tap to adjust the LCD brightness on battery power or external power.

Power: Displays the remaining battery power and allows you to set advanced power saving features.

Memory: Displays the total, currently used, and remaining memory available.

Storage card memory: Displays the total, used, and remaining storage card memory.

MiniSD card: Tap to display the contents of the miniSD card installed.

Settings: Allows you to select the items to display in this ASUS Status pop-up menu.



# Entering information

## Using the Input panel

The Input Panel allows you to select various input methods available on your device including: **Block Recognizer**, **Keyboard**, **Letter Recognizer**, and **Transcriber**.

Tap the Input panel icon to display shortcut menu and select input method.



Input panel icon

## Input panel methods

Block Recognizer



Keyboard



Letter Recognizer



Transcriber



# Messages

## Sending a message

Your device allows you to send and receive email, SMS, MMS, and MSN messages when connected to a network. The following describes how to compose and send a message.

### Composing and sending a message

1. Tap **Start** then **Messaging**.
2. Tap **Menu** > **Go To** then select account:
  - Text Messages
  - Outlook E-mail or
  - MMS
3. Tap **New**.
4. Key in the email address or phone number of one or more recipients, separating them with a semi-colon. To launch Contacts list, tap **To**.
5. Key in your message.



## Using Pocket MSN

1. From the Today screen, tap the MSN icon to launch Pocket MSN.
2. Key in the e-mail address and password, then tap **Sign In**.  
Tap to check **Save password** box to save password.
3. Follow succeeding screen instructions to setup Pocket MSN.



---

### NOTE:

- To use MSN Messenger, you need a Microsoft .NET Passport. Go to [www.passport.com](http://www.passport.com) to obtain a Passport.
  - GPRS will automatically reconnect when your Pocket MSN status is online.
-

# Synchronizing with Exchange Server

Before you can synchronize your device with an Exchange Server, install the Microsoft® ActiveSync™ to your computer using the bundled P535 Getting Started CD. Activesync™ is the software that synchronizes your P535 with a Windows® powered computer. Your P535 comes with a preinstalled ActiveSync™. To synchronize your device with Exchange Server:

1. From the ActiveSync menu, tap **Menu > Add Server Source**.



2. In the Server Address field, input the name of the server running Exchange Server then tap **Next**.
3. Input your name, password, and domain then tap **Next**.

4. Tap the check boxes to select the data items that you want to synchronize with Exchange Server. To change the available synchronization settings, select a data item then tap **Settings**. Tap **Finish** when done.
5. Start the sync process.




**NOTE:** Refer to the User Manual for details on changing the synchronization schedule.

# Personalizing your device

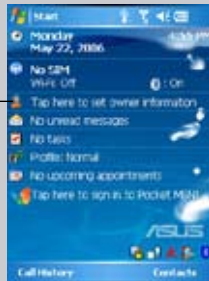
You can customize the look and feel of your device according to your desired settings.

## Entering owner information

To update the owner information:

1. Tap **Start** > **Settings** > **Personal** then tap the **Owner Information** icon or tap the  icon on the Today screen.
2. Key in information.
3. Tap **ok** when done..

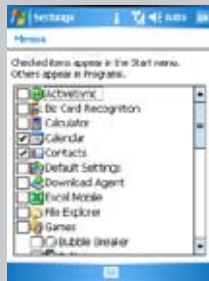
Tap to set user information



## Customizing the Start menu

To customize the Start menu:

1. Tap **Start** > **Settings** > **Personal** tab.
2. Tap the **Menus** icon.
3. Check the items that you want to appear on the menu.
4. Tap **ok** when done.



## Setting phone sounds (ring type, ring tone, and keypad sound)

To setup your phone sounds:

1. Tap **Start > Settings > Personal** tab.
2. Tap the **Phone** icon.
3. From the Phone screen, tap **Ring type** box to select desired ring type.  
Tap **Ring tone** box to select desired ring type.  
Tap **Keypad** box to select keypad sound.
4. Tap **ok** when done.



## Setting theme

To setup theme:


1. Tap **Start > Settings > Personal** tab > **Today**.
2. Select a theme from the list.  
Tap the **Use this picture as the background** check box if you want to use this picture as device screen background.
3. Tap **ok** when finished.



## Setting Date and Time

You can launch the Date and Time screen directly from the Today screen.

To edit date and time:

1. Tap the clock  icon on the Today screen.
2. Select the correct time zone and change the date or time.

---

### NOTE:

During synchronization, the date and time on your device is updated with the date and time on your computer.

---



## Setting Profile

To change your device profile:

1. Tap **Start** > **Settings** > **Personal** tab then tap **Profile** icon.
2. Adjust current Sound and Notifications settings.





# Wireless features

## Using WLAN (IEEE 802.11b/g)

To activate WLAN in your device:

1. Tap **Start** > **Settings** > **Connections** tab then tap the **Wi-Fi Manager** icon.
2. From the Wi-Fi Manager screen, tap **Menu** then **Turn Wi-Fi On**.

You can also turn Wi-Fi ON or OFF from the Today screen.

1. Tap the Wi-Fi icon  or  on the status bar.
2. From the pop-up callout, tap **Turn on Wi-Fi**.

---

### IMPORTANT:

- When WLAN is used simultaneously with the GPRS, the latter will get signal priority. We recommend not to use WLAN and GPRS at the same time.
  - We recommend not to use WLAN and the Bluetooth function at the same time. It may cause disturbance in data transmission since both use the same wireless channel.
  - The WLAN and USB connections cannot be used at the same time.
  - When the battery power is less than 20% the device prompts a warning message whether to continue using WiFi or not. Tap "Yes" to continue using or "No" to disconnect. We recommend that you plug the power adapter immediately to avoid losing data.
- 




## Using Bluetooth™

To activate (turn ON) Bluetooth in your device:

1. Tap **Start** > **Settings** > **Connections** tab then tap the **Bluetooth** icon.
2. From the Bluetooth screen, tap **General** tab.
3. Tap **Turn on** button. The Bluetooth status is displayed above the **Turn on/Turn off** buttons.



You can also turn Bluetooth ON or OFF from the Today screen. To do this:


1. Find the Bluetooth icon  at the bottom right corner of the Today screen.
2. Tap  to display shortcut menu then tap **Turn Bluetooth ON**.  
The Bluetooth icon changes to  if Bluetooth is turned Off.

**NOTES:**

The Bluetooth device setup instructions provided in this section may differ with other Bluetooth devices. If the instructions in this guide differs from the documentation that came with your Bluetooth-enabled device, follow the latter.

## Using a Bluetooth-enabled headset

### Mono headset setup

1. Make sure that Bluetooth is enabled on your device.
2. Tap  on the Today screen then on the shortcut menu tap **Bluetooth Manager**.
3. From the Bluetooth Manager, tap **New**.
4. From the Connection Wizard, tap **Hands-free/Headset setup** then tap **Next**.
5. Make sure that your headset device is in pairing mode and ready to receive incoming connection requests then tap **Next**.
6. Tap the name of your Bluetooth-enabled headset device then tap **Next**.
7. In Passkey, input the alphanumeric passkey of your headset device then tap **OK**. You can find this in the documentation that came with your headset device.
8. Tap **Finish**. You are now ready to use your headset device.




**NOTES:**

If the connection between the device and a Bluetooth headset fails, press the device icon then choose "Re-connection", you do not have to pair the devices again

## Stereo headset setup

P535 supports A2DP (Advanced Audio Distribution Profile), which is used by Bluetooth-enabled stereo headsets. Make sure that your stereo headset also supports A2DP.

1. Tap  on the Today screen then on the shortcut menu tap **Bluetooth Manager**.
2. From the Bluetooth manager screen, tap **New** then select **High Quality Audio Setup**.
3. Make sure that your stereo headset device is in pairing mode and ready to receive incoming connection requests then tap **Next**.
4. Tap the name of your stereo headset device then tap **Next**.
  - If you want to create a shortcut, tap the check box **Create a shortcut for this connection** then input a connection name.
  - If you want to use a secure connections, tap the check box to **Use a secure, encrypted connection**.
5. Tap **Finish** to initiate connection.

---

### IMPORTANT:

To answer a phone call using your stereo headset, make sure that you have mono and stereo connection at the same time.

---

### NOTE:

To use voice commander while using a headset, press the answer button\* on the headset then follow given instructions. (\*Answer button may not be supported in other headset models.)

---



## Using the GPRS Tool

The GPRS Tool allows you to conveniently select and connect to your GPRS service provider.

To connect via GPRS Tool:

1. Tap **Start > Settings > Connections** tab then tap the **Network Setting** icon.

You can also tap **G** on the status bar then tap **Settings** from the pop-up callout.

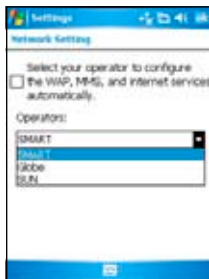


2. From the Network Setting screen, select your GPRS provider from the list.

---

**NOTE:**

- Operators vary in different regions.
  - The GPRS and USB connections cannot be used at the same time.
- 



## Connecting GPRS

To connect GPRS:

1. Launch any application that connects to the Internet (e.g. Internet Explorer).

The device will automatically connect to your default GPRS connection. A pop-up callout appears to display the connection status.

2. When connected, you can start browsing the Internet. If you're using Internet Explorer, the default site will be displayed.



Pop-up callout

## Disconnecting GPRS

To disconnect GPRS:

1. Tap **G** from the status bar.
2. From the pop-up callout, tap **Disconnect**.
3. Tap **ok** to exit.

### NOTE:

- If your ActiveSync is set to sync with Exchange Server automatically, synchronization will occur after you connect again.
- GPRS will automatically reconnect everytime you launch an application that requires GPRS connection (e.g. Internet Explorer or Pocket MSN).



# Notices

## Replaceable batteries

If an equipment is provided with a replaceable battery and if replacement by an incorrect type could result in an explosion (e.g. with some lithium batteries), the following applies:

- if the battery is placed in an OPERATOR ACCESS AREA, there shall be a marking close to the battery or a statement in both the operating and the servicing instructions;
- if the battery is placed elsewhere in the equipment, there shall be a marking close to the battery or a statement in the servicing instructions.

The marking or statement shall include the following or similar text:

### **CAUTION**

**RISK OF EXPLOSION IF BATTERY IS REPLACED  
BY AN INCORRECT TYPE.  
DISPOSE OF USED BATTERIES ACCORDING  
THE INSTRUCTIONS**

## **Operator access with a tool**

If a TOOL is necessary to gain access to an OPERATOR ACCESS AREA, either all other compartments within that area containing a hazard shall be inaccessible to the OPERATOR by the use of the same TOOL, or such compartments shall be marked to discourage OPERATOR access.

An acceptable marking for an electric shock hazard is (ISO 3864, No. 5036).

## **Equipment for restricted access locations**

For equipment intended only for installation in a RESTRICTED ACCESS LOCATION, the installation instructions shall contain a statement to this effect.

## **WARNING**

The user needs to switch off the device when exposed to areas with potentially explosive atmospheres such as petrol stations, chemical storage depots and blasting operations.

ASUS

Address: 15 Li-Te Road, Peitou, Taipei, Taiwan

Tel: 886-2-2894-3447; Fax: 886-2-2890-7698

### Declaration

We declare that the IMEI codes for this product, **P535**, are unique to each unit and only assigned to this model. The IMEI of each unit is factory set and cannot be altered by the user and that it complies with the relevant IMEI integrity related requirements expressed in the GSM standards.

Should you have any questions or comments regarding this matter, please have our best attention.

Sincerely yours,

Company: ASUSTeK COMPUTER INC.

E-mail: <http://vip.asus.com/eservice/techserv.aspx>



# Contact information

## **ASUSTeK COMPUTER INC. (Taiwan)**

Hotline: 0800-093-456 (Toll-Free call from Taiwan only)

Fax: 886-2-2895-9254

E-mail: <http://vip.asus.com/eservice/techserv.aspx>

WWW: <http://tw.asus.com>

## **ASUSTeK COMPUTER INC. (Asia-Pacific)**

Hotline: 886-2-2894-3447

Fax: 886-2-2890-7698

E-mail: <http://vip.asus.com/eservice/techserv.aspx>

WWW: <http://www.asus.com>

## **ASUS COMPUTER GmbH (Germany/Austria)**

Hotline: +49-2102-9599-10

Fax: +49-2102-9599-11

E-mail: <http://www.asus.de/support/support.htm>

WWW: <http://www.asus.de>

## **ASUS COMPUTER (China)**

Tel: +86-10-82667575

E-Mail: <http://vip.asus.com.cn/eservice/techserv.aspx>

A large white rectangular area with rounded corners, containing 20 horizontal green lines for writing. The lines are evenly spaced and extend across the width of the page.