

Q: How to solve A716 MAC address only shows 10 letters.

A: Please update the version of WiFiMe

Synchronizing your PDA & PC first.

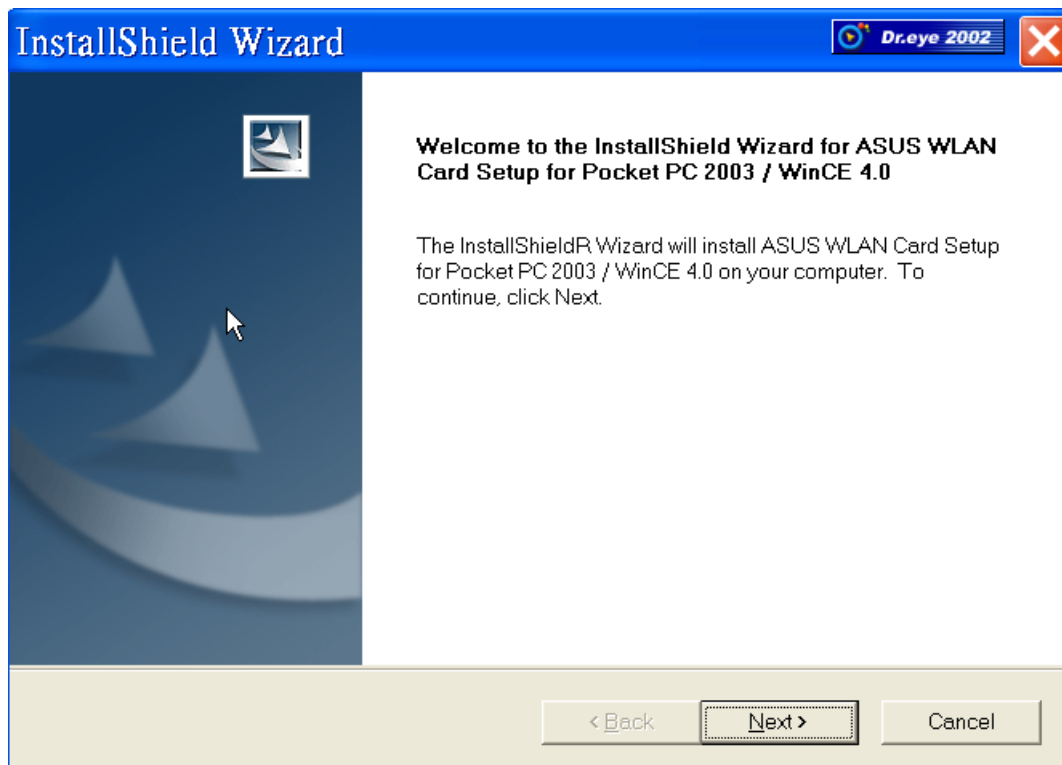
1. Double click WiFiMe Setup in PC

(pls download from ASUS download site

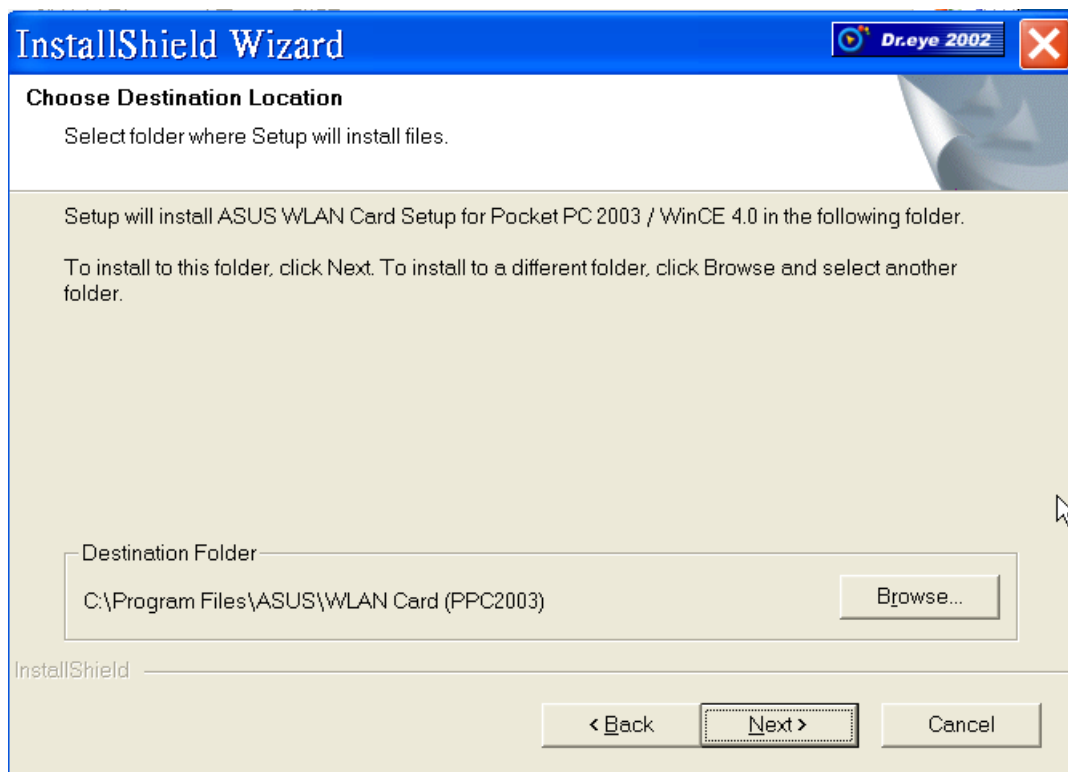
<http://www.asus.com.tw/support/download/item.aspx?ModelName=MyPal%20A716&Type=Latest>)



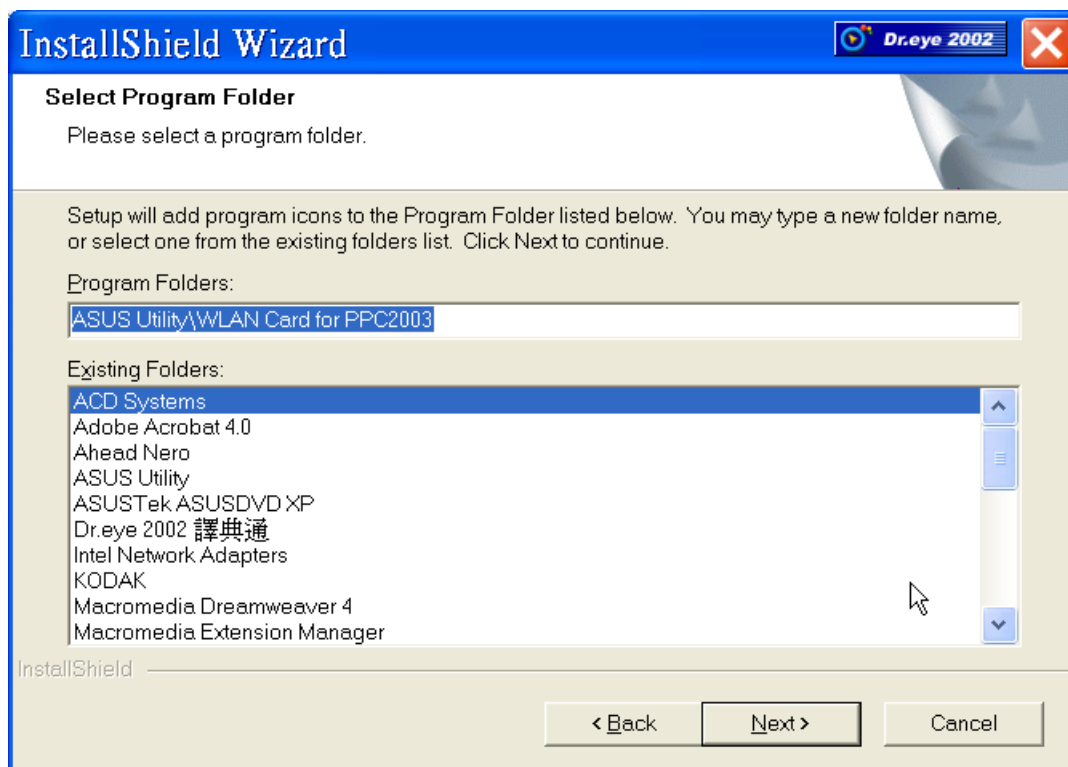
2. Next

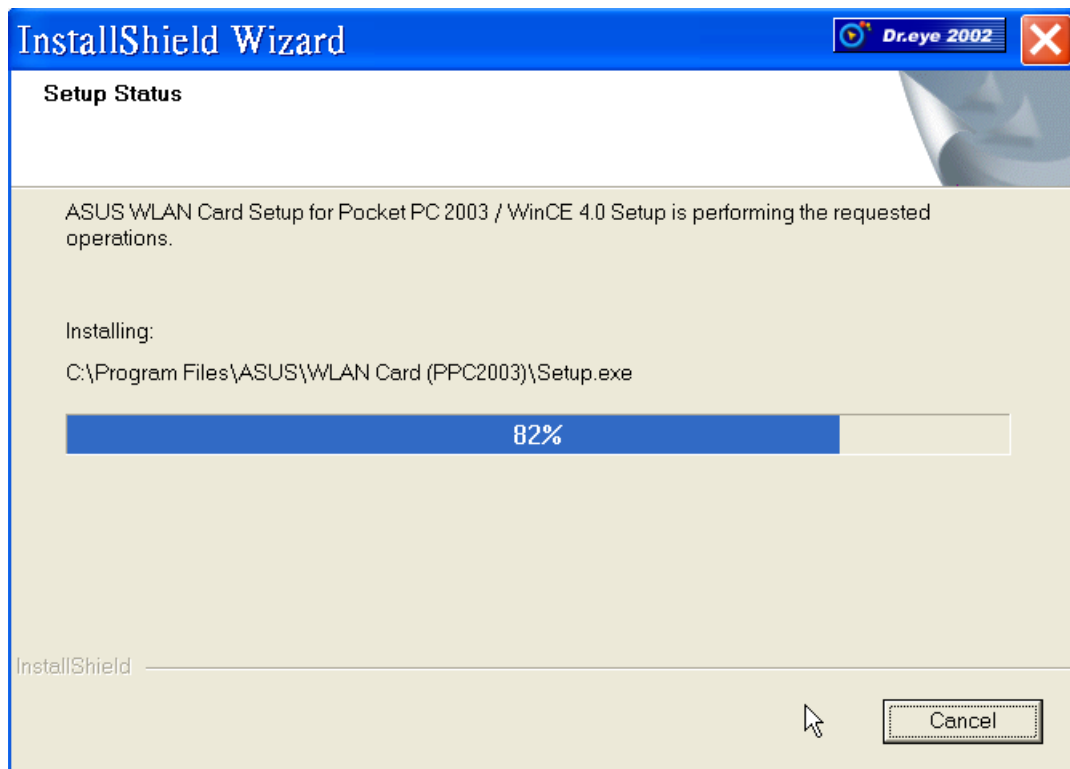


3. Next

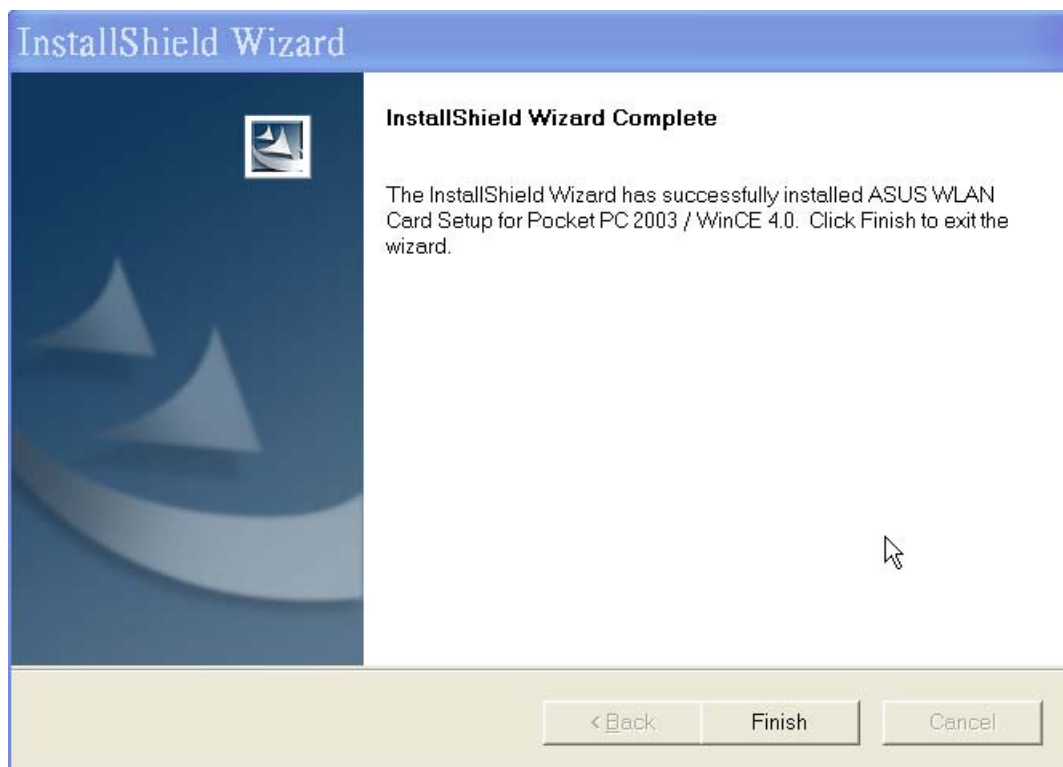


4. Next





5. Finish



6. Select "Install"



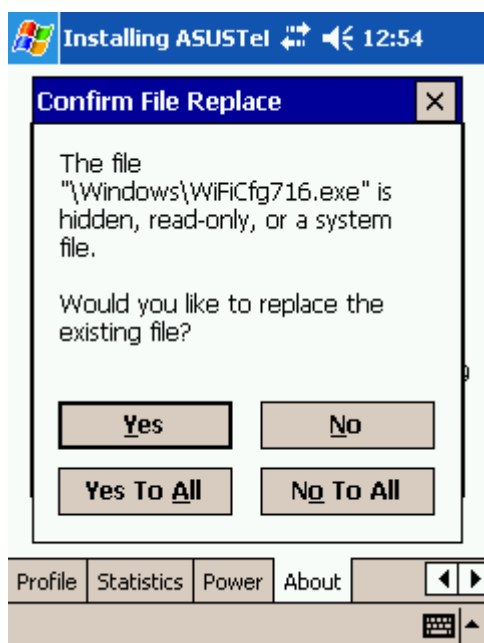
7. Select “Y”

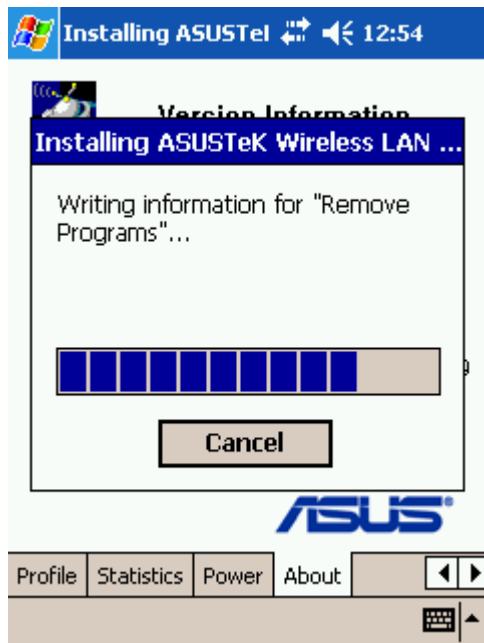


8. Select “Y”



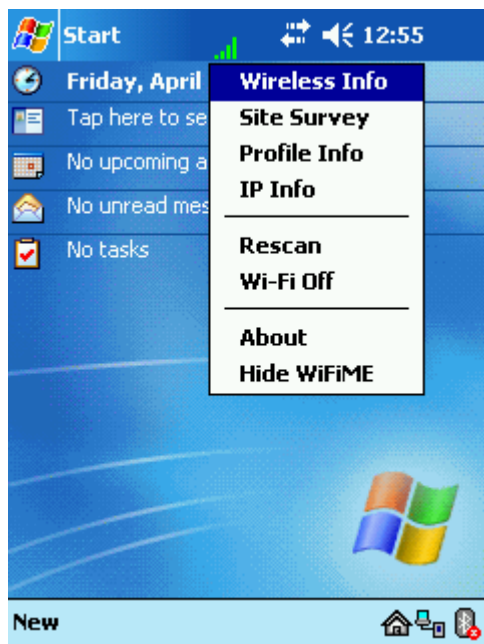
9. Select “Yes To All”





10. Do the software reset

11. Select “About”



12. The Utility Version should be show “0.1.2” after WiFi-Me updated.



Version Information

Utility Version: 0.1.2
Driver Version: 30004
Build Number: F006
Firmware Version: 10800
MAC Address: 00-0E-A6-61-6A-29
NDIS Version: 501
Wireless Device: WL155

