



P527

Quick Start Guide



Package contents

Check your P527 package for the following items:

✓ ASUS P527 device	✓ Protection case
✓ Battery	✓ Getting Started CD
✓ AC Adapter	✓ User Manual
✓ Mini-USB cable	✓ Quick Start Guide
✓ Headset	✓ Warranty Card
✓ Stylus	✓ microSD*
✓ Car cell phone charger*	✓ Bonus CD*
✓ Car Kit (PDA holder and windshield suction pedestal)*	✓ Navigation CD & manual*

*Optional, depend on the area

NOTE:

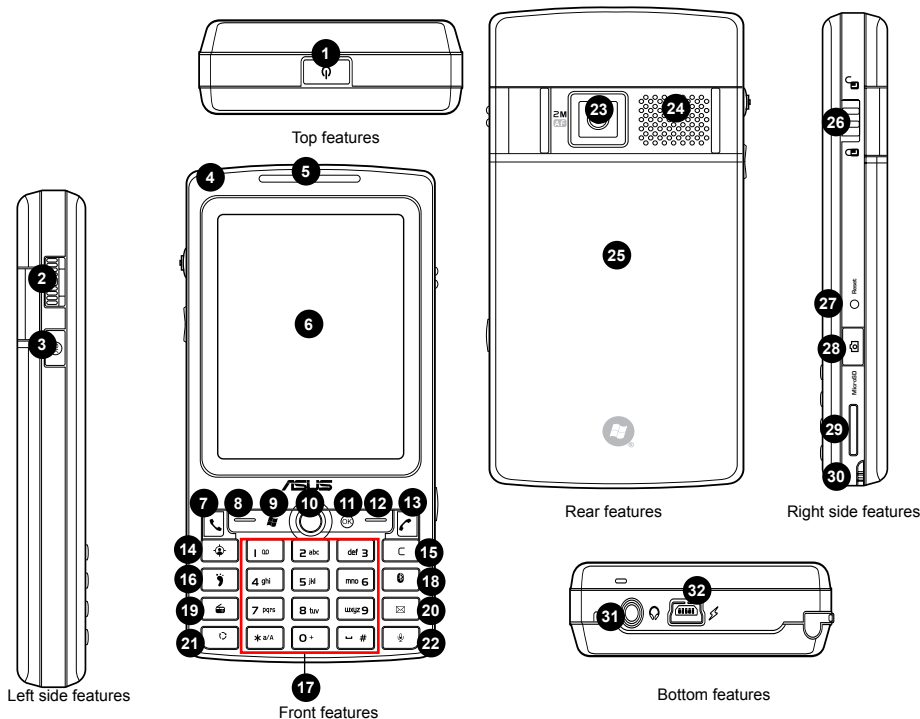
- The Protection case is only for protective usage and not a body-worn accessory.
 - If any of the above items is damaged or missing, contact your retailer.
-

CAUTION:

- To reduce risk of fire, use only correct battery type. Refer to "Installing the SIM card and battery" section for details.
 - Do not attempt to disassemble or service the battery pack.
 - Dispose of used batteries properly. Inquire from local authorities for proper disposal of battery.
-

Getting to know your P527

Layout



Device components description

No.	Item	Description
1	Power button	Press once to set suspend mode or to wake device from sleep mode. Press and hold to turn the power ON or OFF.
2	Jog dial	This three-direction jog dial allows you to conveniently navigate through menus without necessarily using the stylus.
3	OK button	Press to confirm a command or press to close/exit an open application. Press and hold to adjust the voice volume.
4	Notification LED	This multi-color LED notifies the following: <ul style="list-style-type: none">• Green - Phone fully charged.• Flashing green - Network detected.• Red - Phone is charging.• Flashing red - Event notification.• Flashing blue - Bluetooth®, WiFi, or GPS is ON.
5	Earpiece receiver	Allows you to listen to incoming/outgoing calls.
6	LCD touch screen	This 2.6-inch, 65,536-color, 240 x 320-resolution, touchscreen TFT LCD allows you to write, draw, or make selections using the stylus.
7	Call key	Press to receive an incoming call or to make a call.
8	Left Soft key	Performs the command indicated above the button.
9	Start button	Press to launch the Start menu.
10	Navigation key	This five-direction navigation key allows you to navigate through menus. Press down to confirm a command.
11	OK button	Press to confirm a command or press to close/exit an open application.
12	Right Soft key	Performs the command indicated above the button.
13	End key	Press to end a call or a GPRS connection.

No.	Item	Description
14	Location courier key	Long press to launch Location courier key.
15	Clear key	Press to clear enter character to the left.
16	Travelog button	Press to launch Travelog application.
17	Alphanumeric keypad	Allows you to input text and numbers.
18	Bluetooth button	Allows you to enable or disable Bluetooth feature.
19	FM keypad	Press to launch FM radio application.
20	Message button	Press to check Messages.
21	Mode Switcher button	Allows you to switch applications.
22	Voice Commander/Record button	Press to launch the Voice Commander application. Press and hold to launch voice recording.
23	Camera lens	2-mega pixel fixed lens for taking pictures.
24	Stereo speaker	Allows you to listen audio media and phone calls.
25	Battery compartment	Contains the battery that supplies power to the device.
26	Hold button	Slide to enable or disable all keys including the LCD touch screen.
27	Reset button	Using the stylus, press reset button to soft-reset your device.
28	Camera button	Press and hold over three seconds to launch the camera. In camera mode, press to take a picture. In video mode, press to start recording video and press again to stop.
29	Micro-SD slot	Insert a Micro-SD storage card into this slot.
30	Stylus	Use the stylus to write, draw, or select items on the touch screen.
31	Earphone port	Plug headset accessory to this port
32	Mini-USB connector	Use this connector to synchronize your data or to charge the battery.

Getting your device ready

Before you can start using your device, you need to install a Subscriber Identity Mode (SIM) card and a charged battery. A SIM card contains your phone number, subscriber details, phone book, and additional phone memory.

Installing the SIM card and battery

1. Remove the battery compartment cover then remove battery.

NOTE: To prevent data loss, the device automatically shuts down after you open the battery compartment.

2. Insert the SIM card with its gold contacts facing down and the notched corner oriented to the upper left corner of the slot.
3. Replace the battery into the compartment with its copper contacts properly aligned to the copper conductor on the device.
4. Replace battery compartment cover.

CAUTION: Use only an ASUS qualified battery for this device.

Charging the battery

The bundled battery pack is shipped only partially charged. Make sure to charge the battery at least four hours before using it for the first time.

To charge the battery:

1. Connect the AC adapter plug to the mini-USB connector at the bottom of the device.
2. Connect the AC power plug to a grounded wall socket or power strip.

NOTE:

- The notification LED turns red and the battery icon appears on the status bar while the battery is charging.
 - If your battery gets totally discharged, recharge it for at least twenty minutes before you can turn it back on.
-

Powering your device

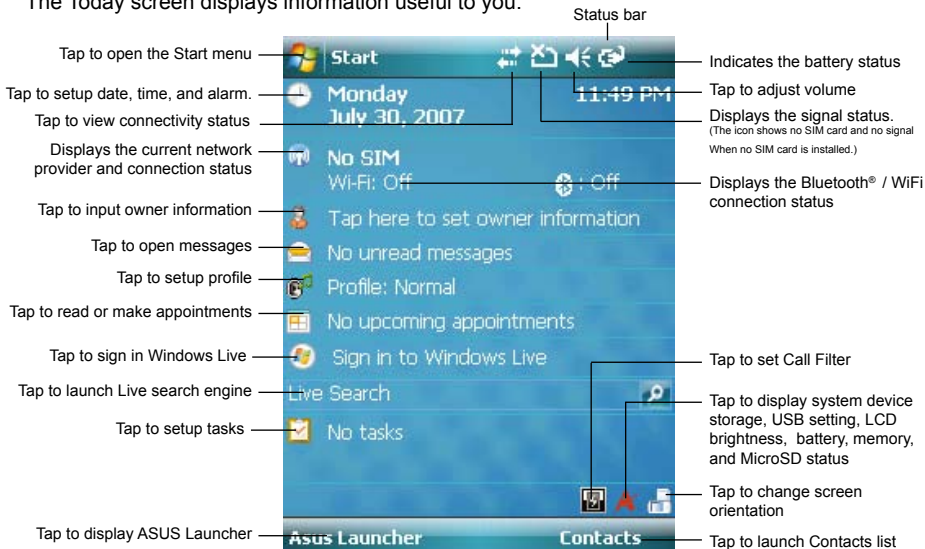
After charging the battery, you are now ready to use your device.

To power on your device:

1. Press and hold the power button to turn ON the device.
2. Follow the succeeding screen instructions to setup your Windows Mobile-based device.


The Today screen

The Today screen displays information useful to you.



ASUS Status icon

The ASUS status icon allows you to easily check and see the current status of the following device components: CPU, USB, LCD brightness, Battery power, Memory, MicroSD card, and device storage.

To check the status of these components, tap the ASUS Status icon  on the Today screen.



USB: Allows you to set the USB connection mode.

Brightness: Tap to adjust the LCD brightness on battery power or external power.

Power: Displays the remaining battery power and allows you to set advanced power saving features.

Program Memory: Displays the total, currently used, and remaining memory available.

Storage memory: Displays the total, currently used, and remaining memory available.

MicroSD card: Tap to display the contents of the MicroSD card installed. This item appears only when a MicroSD card is installed

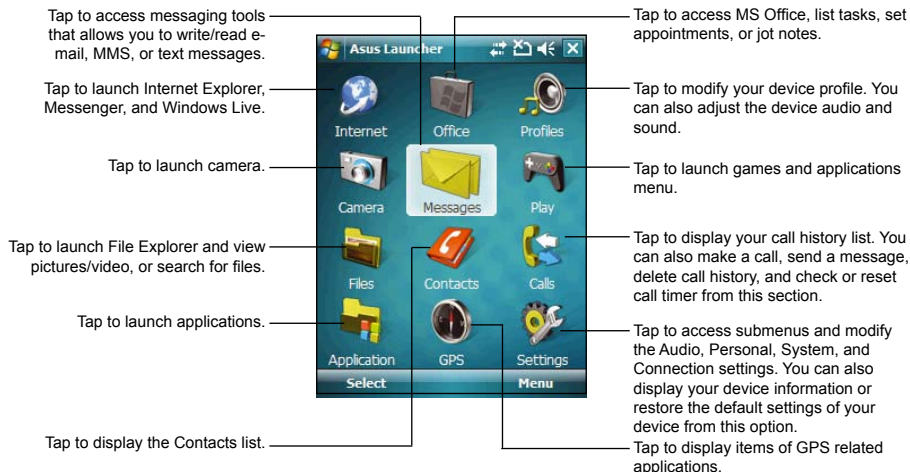
Settings: Allows you to select the items to display in this ASUS Status pop-up menu.

ASUS Launcher

ASUS Launcher is an alternative program that allows you to conveniently and quickly launch applications, perform tasks, and change device settings.

You can run the Program from **Start > Programs > ASUS Launcher**, or tap **ASUS Launcher** at the lower left corner of the Today screen.

Using the ASUS Launcher

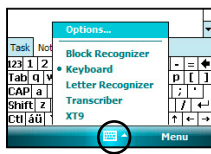


Entering information

Using the Input panel

The Input panel comes with various input methods: **Block Recognizer**, **Keyboard**, **Letter Recognizer**, **XT9**, and **Transcriber**.

Tap the Input panel icon to select input method.



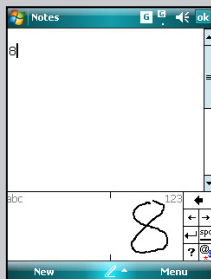
Input panel icon

XT9



Input panel methods

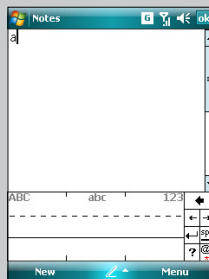
Block Recognizer



Keyboard



Letter Recognizer



Transcriber



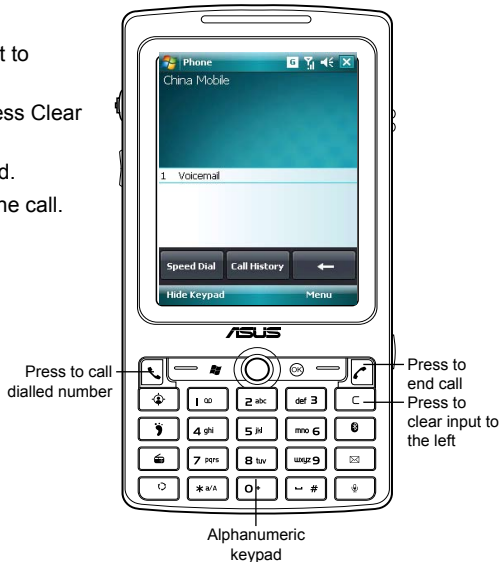
Making a call

You can make a phone call using the phone pad. You can also make calls directly from the Contacts, Call History, Speed Dial, or Voice Commander.

Using the alphanumeric keypad

To make a call using the alphanumeric keypad:

1. Ensure the device is not on hold.
2. Enter the number of the party you want to call then press Call key.
If you pressed the wrong number, press Clear key to erase number to the left.
3. Talk to the called party when connected.
4. When finished, press End key to end the call.



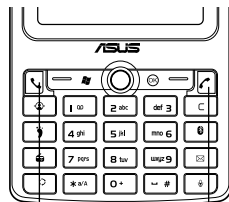
Receiving a call

To answer or reject an incoming call:

- To answer a call tap **Answer**, or press Call key.
- To reject an incoming call, tap **Ignore**, or press End key.

TIP:

Press and hold Call key to switch receiver to speakerphone mode.



Call key

End key

The following pop-up screen appears during an incoming call:


- Tap **Answer** to receive call or
- Tap **Ignore** to dismiss call.



To terminate a call:

- Tap **End** or press End key to terminate an incoming or outgoing call.

Using ASUS CallFilter

After installing the necessary files, tap  to launch the ASUS CallFilter shortcut menu. The shortcut menu allows you to conveniently activate either the Accept or Reject list.

From the shortcut menu, do any of the following:

- Tap **Accept List** to activate Accept list and receive only incoming calls whose numbers are in the Accept list.
- Tap **Reject List** to activate Reject list and reject all incoming calls whose numbers are in the Reject list.
- Tap **Edit** to open the CallFilter utility screen.
- Tap **Close** to deactivate CallFilter.

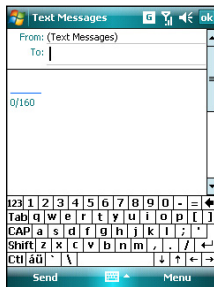
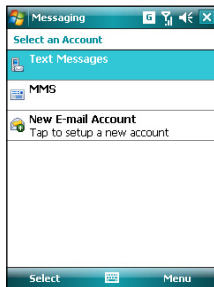
Messages

Sending a message

Your device allows you to send and receive email, SMS, MMS, and Email messages when connected to a network. The following describes how to compose and send a message.

Composing and sending a message

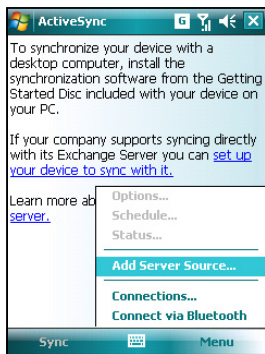
1. Tap **Start > Messaging**.
2. From the Messaging screen, tap item to select an account:
 - Text Messages
 - MMS
 - Email
3. Tap **Menu > New**.
4. Input the email address or phone number of one or more recipients, separating them with a semi-colon. To launch Contacts list, tap **To**.
5. Key in your message.
6. Tap **Send**.



Synchronizing with Exchange Server

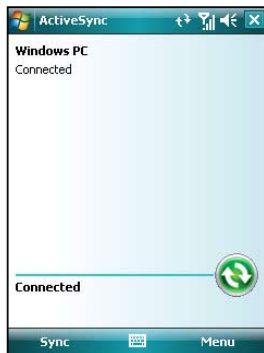
Before you can synchronize your device with an Exchange Server, install the Microsoft® ActiveSync™ to your computer using the bundled P527 Getting Started CD. Activesync™ is the software that synchronizes your P527 with a Windows® powered computer. Your P527 comes with a preinstalled ActiveSync™. To synchronize your device with Exchange Server:

1. From the ActiveSync menu, tap **Menu > Add Server Source**.



2. In the Server Address field, input the name of the server running Exchange Server then tap **Next**.
3. Input your name, password, and domain then tap **Next**.

4. Tap the check boxes to select the data items that you want to synchronize with Exchange Server. To change the available synchronization settings, select a data item then tap **Settings**. Tap **Finish** when done.
5. Start the sync process.





NOTE: Refer to the User Manual for details on changing the synchronization schedule.

Personalizing your device

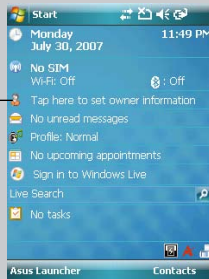
You can customize the look and feel of your device according to your desired settings.

Entering owner information

To update the owner information:


1. Tap **Start** > **Settings** > **Personal** tab then tap the **Owner Information** icon or tap the  icon on the Today screen.
2. Key in information.
3. Tap  when done.

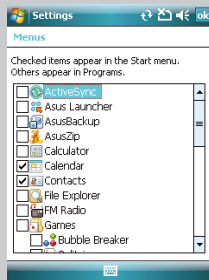
Tap to set owner information



Customizing the Start menu

To customize the Start menu:

1. Tap **Start** > **Settings** > **Personal** tab.
2. Tap the **Menus** icon.
3. Check the items that you want to appear on the menu.
4. Tap  when done.



Setting phone sounds (ring type, ring tone, and keypad sound)

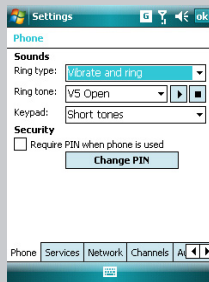
To setup your phone sounds:

1. Tap **Start** > **Settings** > **Personal** tab.
2. Tap the **Phone** icon.
3. From the Phone screen, tap **Ring type** box to select desired ring type.

Tap **Ring tone** box to select desired ring type.

Tap **Keypad** box to select keypad sound.

4. Tap **ok** when done.



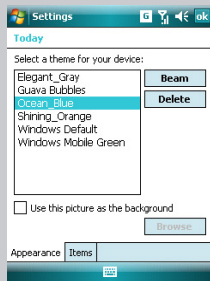
Setting theme

To setup theme:

1. Tap **Start** > **Settings** > **Personal** tab > **Today**.
2. Select a theme from the list.

Tap the **Use this picture as the background** check box if you want to use this picture as device screen background.

3. Tap **ok** when finished.



Setting Date and Time

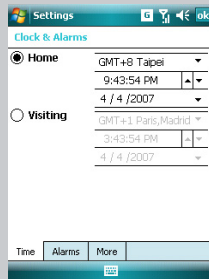
You can launch the Date and Time screen directly from the Today screen.

To edit date and time:

1. Tap the clock icon on the Today screen.
2. Select the correct time zone and change the date or time.

NOTE:

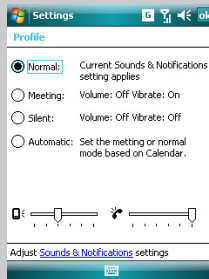
During synchronization, the date and time on your device is updated with the date and time on your computer.



Setting Profile

To change your device profile:

1. Tap **Start > Settings > Personal** tab then tap **Profile** icon.
2. Adjust current Sound and Notifications settings.



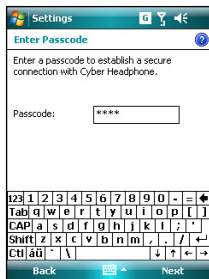
Wireless features

Using Bluetooth™ - Connecting with other Bluetooth-enabled devices

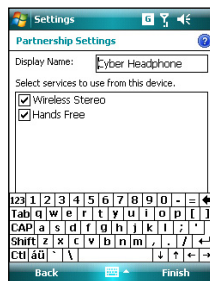
1. Ensure that Bluetooth is enabled on the device you want to add and the device is set as Discoverable.
2. Tap **Start > Settings > Connections** tab then tap **Bluetooth** icon.
3. Tap **Add new device...** to search for available Bluetooth devices. The search may take a while.
4. Select the device you want to connect with then tap **Next** or press the Right Soft key.



5. Enter the alphanumeric passcode of the device you want to connect then tap **Next** or press the Right Soft key. You can find the passcode in the documentation that came with the other device.



6. Enter the display name for this connection.



7. Repeat steps 3 - 6 to connect to more devices.



Using Wi-Fi®

Turning on Wi-Fi

Use the Wireless Manager to enable or disable Wi-Fi in your device. You can access the Wireless Manager by performing any of the following:

1. Launch the Wireless Manager. To do this, you can either:
 - Tap **Start > Settings > Connections** tab > **Wireless Manager**.
 - Tap the Wireless Manager icon from the Today screen.
2. From the Wireless Manager screen, tap **Wi-Fi**.

Adding a wireless network

To add a wireless network:

1. To launch the Wi-Fi settings page, you can either:
 - Tap **Settings** after selecting a wireless network to connect your device to.
 - Tap **Start > Settings > Connections** tab > **Wi-Fi**.Tap **Wireless > Add New....**
2. Enter a name for the network and select an item from the **Connects to:** drop-down menu. Then tap **Next**.
3. Set authentication, data encryption, and network key. Ask your network administrator for these information. Then tap **Next**.
4. If you need to change the EAP type, check the adapter box and then change the EAP type.
5. Tap **Finish** when done.

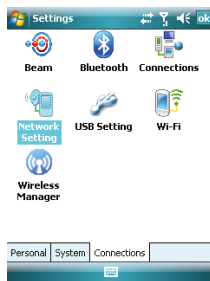
Using the GPRS Tool

The GPRS Tool allows you to conveniently select and connect to your GPRS service provider.

To connect via GPRS Tool:

1. Tap **Start > Settings > Connections** tab then tap the **Network Setting** icon.

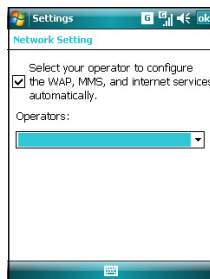
You can also tap **G** on the status bar then tap **Settings** from the pop-up callout.



2. From the Network Setting screen, select your GPRS provider from the list.

NOTE:

- Operators vary in different regions.
 - The GPRS and USB connections cannot be used at the same time.
-



Connecting GPRS

To connect GPRS:

1. Launch any application that connects to the Internet (e.g. Internet Explorer).

The device will automatically connect to your default GPRS connection. A pop-up callout appears to display the connection status.

2. When connected, you can start browsing the Internet. If you're using Internet Explorer, the default site will be displayed.



Pop-up callout

Disconnecting GPRS

To disconnect GPRS:

1. Tap **G** from the status bar.
2. From the pop-up callout, tap **Disconnect**.

NOTE:

- If your ActiveSync is set to sync with Exchange Server automatically, synchronization will occur after you connect again.
- GPRS will automatically reconnect everytime you launch an application that requires GPRS connection (e.g. Internet Explorer or Pocket MSN).



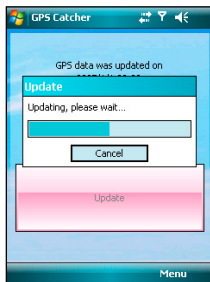
GPS features

Updating GPS data with GPS Catcher

The GPS Catcher allows you to update the GPS data in your device. The GPS data contains important information about the status of satellite, current date and time for determining the satellite position.

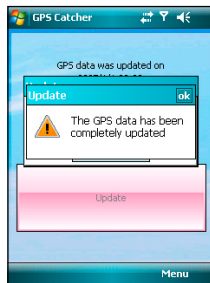
To update GPS data:

1. Tap **Start** > **Programs** > **GPS Catcher**.
2. Connect your device to PC with the USB cable. Then tap **Update**. The update process starts.
3. Tap **ok** when finished.



NOTE:

To make a successful update, make sure ActiveSync 4.5 is installed in your PC and your PC is connected to the Internet.



NOTE:

The expiration of GPS data is three days. You need to update it when it is expired. You can also set GPS Catcher to update automatically, refer to the section **Setting GPS Catcher** in the User Guide.

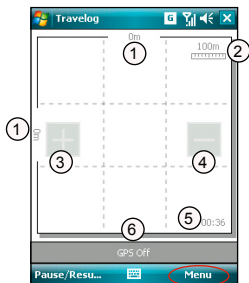
Using Travelog

The Travelog allows you to record your travel track and export it to show on Google Earth.

Turning on GPS

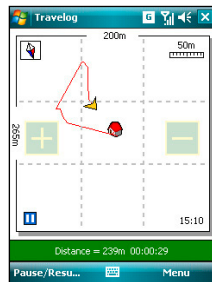
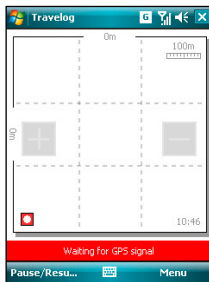
To turn on GPS:

1. Tap **Start > Programs > Travelog > Menu**.



1. Physical distance
2. Scale
3. Zoom in button
4. Zoom out button
5. Current time
6. Status bar

2. Tap **Turn On GPS**. Then the device starts searching for GPS signal.



Recording Travel Track

To record travel track:

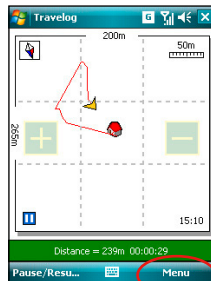
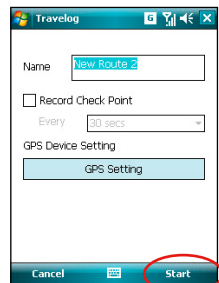
1. Tap **Start** > **Programs** > **Travelog** > **Menu** > **New Route**.
Enter a name for the route.

If you want to record the check point, check the **Record Check Point** box and set an interval.

Refer to the User Guide on **GPS setting** in Travelog Setting section for details about setting GPS and power saving.

2. Tap **Start** to begin recording your travel track.
Tap **Pause/Resume** to pause or resume recording.

3. Tap **Menu** > **Stop** to stop recording. The tracking records are saved in My Favorite.



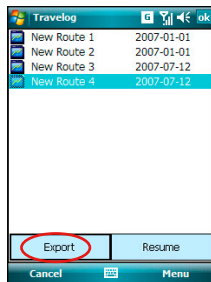
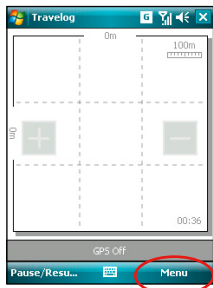
Recording

Exporting Route

You can export your trip route into KMZ file and load it on Google Earth.

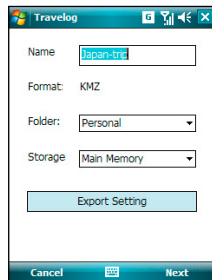
To export a route:

1. From the Track screen, tap **Menu > My Favorite**.
2. From the route list, select a route and tap **Export** button.

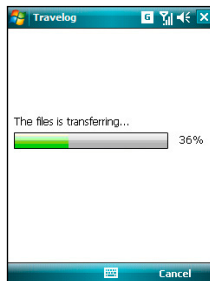


3. Edit the route name and select the destination folder and storage place. Then tap **Next**.

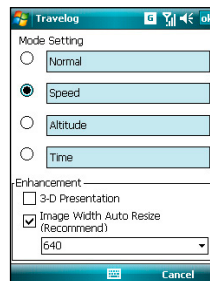
You can also set export settings. Refer to the **Export Setting** section in the User Guide for details.



- When exporting, you can tap **Cancel** to stop exporting.
- When finished, a notification message pops up. Tap **ok**.



The display modes of routes on Google Earth vary from the output mode and enhanced presentation mode you set in Export Setting. See the examples on the next page.



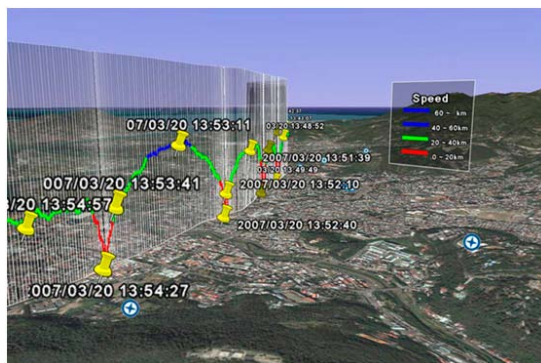
Normal Mode



Speed Mode with 2-D Presentation



Speed Mode with 3-D Presentation

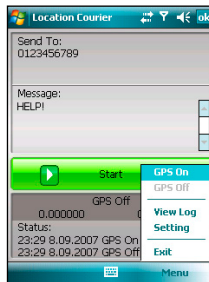


Using Location Courier

The Location Courier allows you to send your position through SMS messages to up to five receivers at the same time. You can also set a timer to send SMS messages periodically.

To use Location Courier:

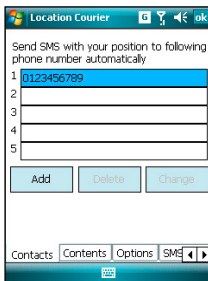
1. Tap **Start** > **Programs** > **Location Courier**.
2. Tap **Menu** > **Setting** to edit message content and set Location Courier properties.



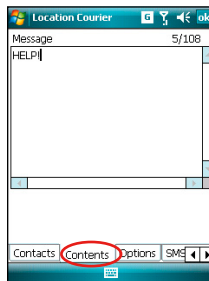
NOTE:

The GPS automatically turns on when you launch the Location Courier application.

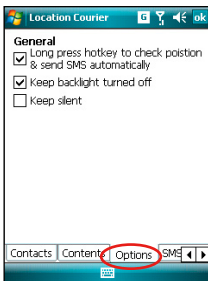
3. Enter the number which you want to send the SMS to. Tap **Add** button to add a contact from the Contacts list.



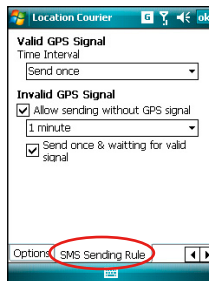
4. Tap **Contents** tab then enter message.



5. Tap **Options** tab then check your desired properties.



6. Tap **SMS Sending Rule** tab then select time interval and check your desired properties. Tap **ok** to finish setting.



Other features

Using Backup

Backing-up files

To backup files:

1. From the Today screen, tap **Start** > **Programs** > **Backup** > **Backup**.
2. Select the items you want to backup. Then tap **Next**.
3. Rename the file and select the storage location for the backup. Then tap **Next**.
4. Enter four digits as your password to encrypt the backup file. Then tap **Next**.
5. Tap **Start** to begin backup. Tap **Back** to return to the last screen.
6. Tap **Reset** to reset the device.

NOTE: The system will turn off all processing applications when backing up files.

Restoring files

To restore files:

1. From the Today screen, tap **Start** > **Programs** > **Backup** > **Restore**.
2. Select a file you want to restore. Then tap **Next**.
3. Enter the four-digit password to decrypt the backup file. Then tap **Next**.
4. Select the items you want to restore. Then tap **Next**.
5. Tap **Start** to begin restore. Tap **Back** to return to the last screen.
6. Tap **Reset** to reset the device.

NOTE: The system will turn off all processing applications when restoring files.

Using NewStation

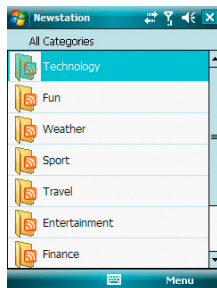
NOTE:

Ensure your device is connected to Internet when using NewStation.

Reading RSS news

To read RSS news:

1. Tap **Start > Programs > NewStation**.
2. Tap a category folder to open.
3. Tap a channel name to open.
4. Browse your favorite subjects.



Notices

Replaceable batteries

If an equipment is provided with a replaceable battery and if replacement by an incorrect type could result in an explosion (e.g. with some lithium batteries), the following applies:

- if the battery is placed in an OPERATOR ACCESS AREA, there shall be a marking close to the battery or a statement in both the operating and the servicing instructions;
- if the battery is placed elsewhere in the equipment, there shall be a marking close to the battery or a statement in the servicing instructions.

The marking or statement shall include the following or similar text:

CAUTION

RISK OF EXPLOSION IF BATTERY IS REPLACED
BY AN INCORRECT TYPE.
DISPOSE OF USED BATTERIES ACCORDING TO
THE INSTRUCTIONS

Operator access with a tool

If a TOOL is necessary to gain access to an OPERATOR ACCESS AREA, either all other compartments within that area containing a hazard shall be inaccessible to the OPERATOR by the use of the same TOOL, or such compartments shall be marked to discourage OPERATOR access.

An acceptable marking for an electric shock hazard is (ISO 3864, No. 5036).

Equipment for restricted access locations

For equipment intended only for installation in a RESTRICTED ACCESS LOCATION, the installation instructions shall contain a statement to this effect.

WARNING

The user needs to switch off the device when exposed to areas with potentially explosive atmospheres such as petrol stations, chemical storage depots and blasting operations.

ASUS

Address: 15 Li-Te Road, Peitou, Taipei, Taiwan

Tel: 886-2-2894-3447; Fax: 886-2-2890-7698

Declaration

We declare that the IMEI codes for this product, **P527**, are unique to each unit and only assigned to this model. The IMEI of each unit is factory set and cannot be altered by the user and that it complies with the relevant IMEI integrity related requirements expressed in the GSM standards.

Should you have any questions or comments regarding this matter, please have our best attention.

Sincerely yours,

Company: ASUSTeK COMPUTER INC.

E-mail: <http://vip.asus.com/eservice/techserv.aspx>

Contact information

ASUSTek COMPUTER INC. (Taiwan)

Hotline: 0800-093-456 (Toll-Free call from Taiwan only)
Fax: 886-2-2895-9254
Online service: <http://vip.asus.com/eservice/techserv.aspx>
WWW: <http://tw.asus.com>

ASUSTek COMPUTER INC. (Asia-Pacific)

Hotline: 886-2-2894-3447
Fax: 886-2-2890-7698
Online service: <http://vip.asus.com/eservice/techserv.aspx>

ASUS COMPUTER INTERNATIONAL (America)

Hotline: +1-812-282-2787
Fax: +1-812-284-0883
Online Service: <http://support.asus.com/techserv/techserv.aspx>.
WWW: <http://www.asus.com>

ASUS COMPUTER GmbH (Germany/Austria)

Hotline: +49-2102-9599-10
Fax: +49-2102-9599-11
Online service: <http://vip.asus.com/eservice/techserv.aspx>
WWW: <http://www.asus.de>

ASUS COMPUTER (China)

Tel: +86-10-82667575
Online service: <http://vip.asus.com.cn/eservice/techserv.aspx>.
WWW: <http://www.asus.com>

