



P550

# Quick Start Guide

# Package contents

Check your P550 package for the following items:

- ✓ ASUS P550 device
- ✓ Battery
- ✓ AC Adapter
- ✓ Mini-USB cable
- ✓ Headset
- ✓ Stylus
- ✓ Getting Started CD
- ✓ User Manual
- ✓ Quick Start Guide
- ✓ Warranty Card

---

**NOTE:**

If any of the above items is damaged or missing, contact your retailer.

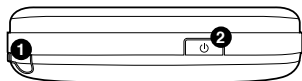
---

**CAUTION:**

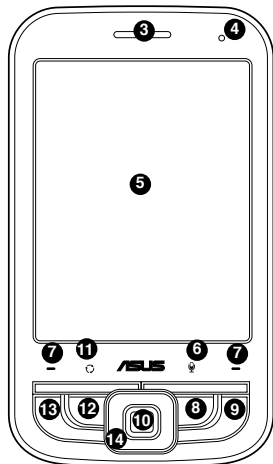
- To reduce risk of fire, use only correct battery type. Refer to "Installing the SIM card and battery" section for details.
  - Do not attempt to disassemble the battery pack.
  - Dispose of used batteries properly. Inquire from local authorities for proper disposal of battery.
-

# Getting to know your P550

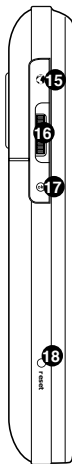
## Layout



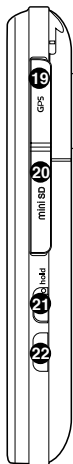
Top features



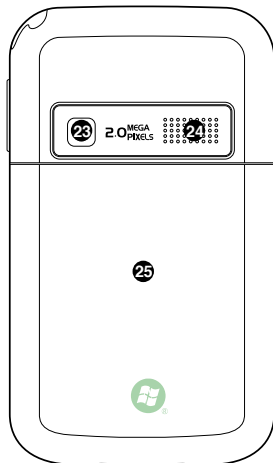
Front features



Left side features



Right side features



Back features



Bottom features

## Device components description

No.	Item	Description
1	Stylus	Use the stylus to write, draw, or select items on the touch screen.
2	Power button	Press and hold to turn the power ON/OFF. Press to set suspend mode or to wake device from sleep mode.
3	Earpiece receiver	Allows you to listen to incoming/outgoing calls.
4	Notification LED	This multi-color LED notifies the following: <ul style="list-style-type: none"><li>• <b>Steady red</b> - Battery is charging.</li><li>• <b>Steady green</b> - Battery is fully charged.</li><li>• <b>Flashing green</b> - Signal/network detected.</li><li>• <b>Flashing red</b> - Event alarm/notification.</li><li>• <b>Flashing blue</b> - Bluetooth®, Wi-Fi®, or GPS is set to ON.</li></ul>
5	LCD touch screen	This TFT LCD touchscreen allows you to write, draw, or make selections using the stylus.
6	Voice Record key	Press and hold to launch the voice recorder.
7	Left and Right soft keys	These keys perform the command indicated above the button.
8	OK key	Press to confirm a command or to exit an open application.
9	End key	Press to end a call.
10	Enter/Action button	Press to confirm the selection or run an application. Press to take pictures in camera mode. Press to start/stop recording video in video mode.
11	Mode Switcher key	Press to switch applications and tasks. Press and hold for 7 seconds to launch the Location Courier.
12	Windows key	Press to launch the Windows® Start menu.
13	Call key	Press to receive an incoming call or make a call.

## Device components description

No.	Item	Description
14	Navigation keys	Use to move through menus.
15	Browser key	Press to launch the Internet Explorer.
16	Jog dial key	This three-direction jog dial key allows you to conveniently navigate through menus without using the stylus. Press and hold to display the Volume pop-up menu.
17	OK key	Press to confirm a command or to exit an open application.
18	Reset button	Insert the stylus or a sharp-pointed object, such as a paperclip, to restart the device.  The Reset button only restarts your device. It will not erase all data in your device nor restore your device to its factory default settings.
19	External GPS antenna slot	Insert your external GPS antenna into this slot.
20	MiniSD card slot	Insert your miniSD card in this slot.
21	Hold key	Slide to enable or disable all keys including the LCD touch screen.
22	Camera button	Press and hold this button to activate the camera. In camera mode, press to take a picture. In video mode, press to start recording video and press again to stop.
23	Camera lens	This is the lens for the device's 2.0 mega pixel camera.
24	Speakerphone	Use this to listen to music or talk over the phone handsfree.
25	Back cover	Contains the battery that supplies power to the device.
26	Mini-USB sync/connector	Use this connector to synchronize your data or to charge the battery.
27	Earphone jack	Plug headset accessory to this port.

# Getting your device ready

Before you can start using your device, you need to install a Subscriber Identity Mode (SIM) card and a charged battery. A SIM card contains your phone number, subscriber details, phone book, and additional phone memory.

## Installing the SIM card and battery

1. Remove the battery compartment cover then remove battery.
3. Insert the SIM card with its gold contacts facing down and the notched corner oriented to the lower right corner of the slot.
4. Replace the battery into the compartment with its copper contacts aligned to the copper conductor on the device.
5. Replace battery compartment cover.

---

**CAUTION:**

Use only an ASUS qualified battery for this device.

---

## Charging the battery

The standard battery pack is shipped partially charged. Make sure to charge the battery at least four hours before using it for the first time.

To charge the battery:

1. Connect the AC adapter plug to the mini-USB connector at the bottom of the device.
2. Connect the AC power plug to a grounded wall socket or power strip. The LED indicator turns red while the phone is charging.

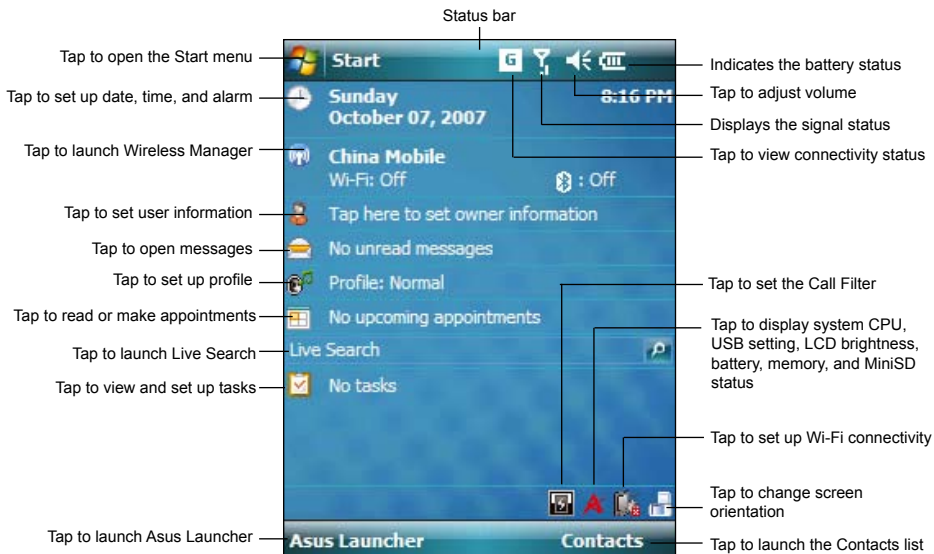
## Powering your device

After charging the battery, you are now ready to use your device.

To power on your device:


1. Press and hold the power button to turn ON the device.
2. Follow the screen instructions to set up your device.

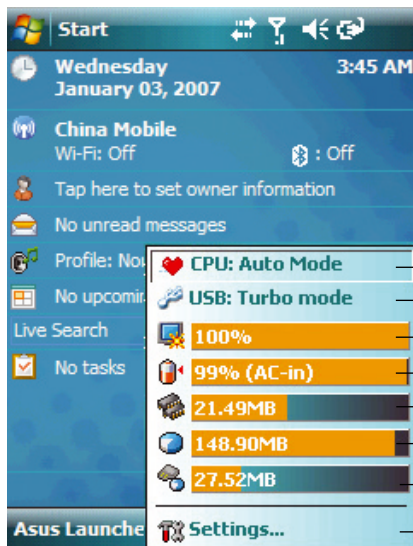
## The Today screen



## ASUS Status icon

The ASUS status icon allows you to easily check and see the current status of the following device components: CPU, USB, LCD Brightness, battery power, memory, miniSD card, and device storage.

To check the status of these components, tap the ASUS Status icon  on the Today screen.



**CPU:** Allows you to set the CPU mode. Set to Automatic Mode to automatically change the CPU speed according to the CPU loading.

**USB:** Allows you to set the USB connection mode.

**Brightness:** Tap to adjust the LCD brightness on battery power or external power.

**Power:** Displays the remaining battery power and allows you to set advanced power saving features.

**Memory:** Displays the total, currently used, and remaining memory available.

**Storage memory:** Displays the total, used, and remaining storage card memory.

**Storage card:** Tap to display the contents of the storage installed. (Appears only when a MiniSD card is inserted in the device)

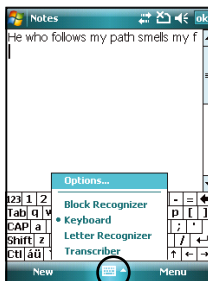
**Settings:** Allows you to select the items to display in this ASUS Status pop-up menu.

# Entering information

## Using the Input panel

The Input Panel allows you to select various input methods available on your device including: **Block Recognizer**, **Keyboard**, **Letter Recognizer**, and **Transcriber**.

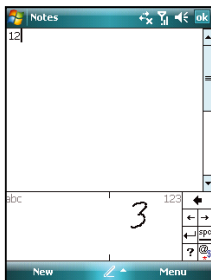
Tap the Input panel icon to display shortcut menu and select input method.



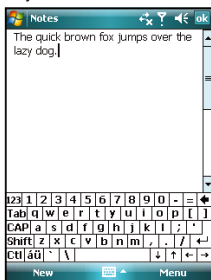
Input panel icon

## Input panel methods

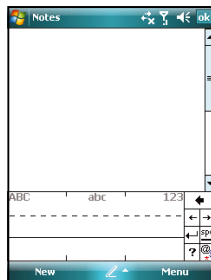
Block Recognizer



Keyboard



Letter Recognizer



Transcriber



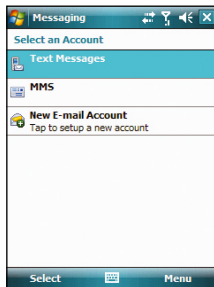
# Messages

## Sending a message

Your device allows you to send and receive email, SMS, MMS, and MSN messages when connected to a network. The following describes how to compose and send a message.

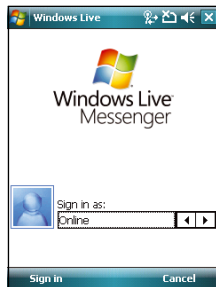
### Composing and sending a message

1. Tap **Start > Messaging**.
2. Select account:
  - Text Messages
  - MMS
  - E-mail
3. Tap **Menu > New**.
4. Key in the email address or phone number of one or more recipients, separating them with a semi-colon. To launch Contacts list, tap **Menu > Add Recipient**.
5. Key in your message.



## Using Windows Live Messenger

1. Tap **Start > Programs> Messenger** to launch Windows Live Messenger.
2. Tap Sign in to Windows Live Messenger, then tap **Accept**.
2. Key in the e-mail address and password, then tap **Sign In**.  
Tap to check **Save password** box to save password.
3. Follow the screen instructions to setup Windows Live Messenger.



---

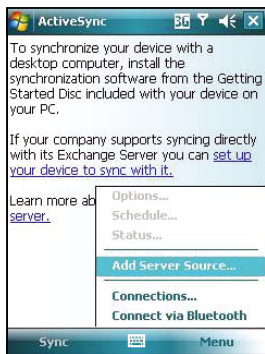
### NOTE:

- To use Windows Live Messenger, you need a Microsoft .NET Passport. Go to [www.passport.com](http://www.passport.com) to obtain a Passport.
  - GPRS will automatically reconnect when your Windows Live Messenger status is online.
-

# Synchronizing with Exchange Server

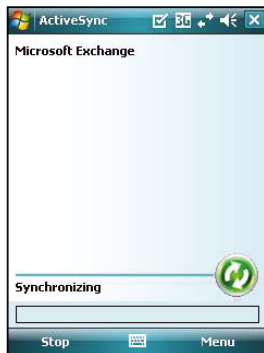
Before you can synchronize your device with an Exchange Server, install the Microsoft® ActiveSync™ to your computer using the bundled P550 Getting Started CD. Activesync™ is the software that synchronizes your P550 with a Windows® powered computer. Your P550 comes with a preinstalled ActiveSync™. To synchronize your device with Exchange Server:

1. From the ActiveSync menu, tap **Menu > Add Server Source**.



2. In the Server Address field, key in the name of the server running Exchange Server then tap **Next**.
3. Key in your name, password, and domain then tap **Next**.

4. Tap the check boxes to select the data items that you want to synchronize with Exchange Server. To change the available synchronization settings, select a data item then tap **Settings**. Tap **Finish** when done.
5. Start the sync process.





**NOTE:** Refer to the User Manual for details on changing the synchronization schedule.

# Personalizing your device

You can customize the look and feel of your device according to your desired settings.

## Entering owner information

To update the owner information:


1. Tap **Start > Settings > Personal tab > Owner Information** or tap the  icon on the Today screen.
2. Key in information.
3. Tap  when done.

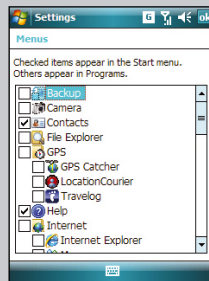
Tap to set owner information



## Customizing the Start menu

To customize the Start menu:

1. Tap **Start > Settings > Personal tab > Menus**.
2. Check the items that you want to appear on the menu.
3. Tap  when done.

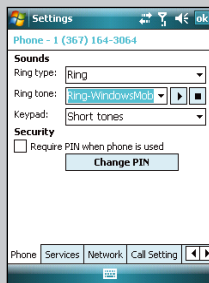


## Setting phone sounds

### (Ring Type, ring tone, and keypad sound )

To set up your phone sounds:

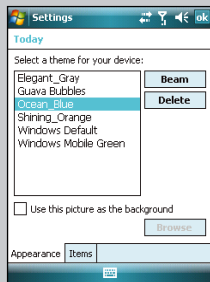
1. Tap **Start > Settings > Personal tab > Phone**.
2. From the phone screen, tap **Ring Type** box to select desired ring type.  
Tap **Ring tone** box to select desired ring type.  
Tap **Keypad** box to select the keypad sound.
3. Tap **ok** when done.



## Setting theme

To set up theme:


1. Tap **Start > Settings > Personal tab > Today**.
2. Select a theme from the list.  
Tap the **Use this picture as the background** check box if you want to use this picture as device screen background.
3. Tap **ok** when finished.



## Setting Date and Time

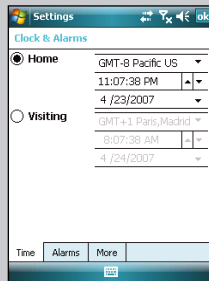
You can launch the Date and Time screen directly from the Today screen.

To edit date and time:

1. Tap the clock  icon on the Today screen.
2. Select the correct time zone and change the date or time.

### NOTE:

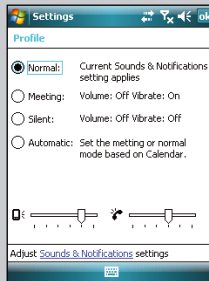
During synchronization, the date and time on your device is updated with the date and time on your computer.



## Setting Profile


To change your device profile:

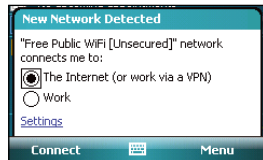
1. Tap **Start > Settings > Personal tab > Profile**.
2. Adjust current Sound and Notifications settings.



# Wireless features

## Turning on Wi-Fi

1. Tap  > **Turn on Wi-Fi**. The Device then automatically scans for all available wireless networks within the Wi-Fi range.
2. From the list of detected wireless networks, select a wireless network that you want to connect the device to.
3. Select whether the wireless network connects to **The Internet** or **Work** network.
4. Tap **Connect**. The device then connects to the selected network.



## Turning ON/OFF Bluetooth in your device

To turn on/off Bluetooth in your device:

1. Tap **Start > Settings > Connections tab > Bluetooth**.
2. From the **Mode** tab, select or clear the **Turn on Bluetooth** check box.  
You can also turn on/off Bluetooth using the Wireless Manager. Tap **Start > Settings > Connections tab > Wireless Manager**.

---

### NOTES:

When not in use, deactivate Bluetooth in your device to conserve battery power.

---

## Creating a Bluetooth partnership

1. Ensure that the two devices are turned on, visible, and within close range.
2. Tap **Start > Settings > Connections** tab.
3. Tap **Bluetooth > Devices** tab > **Add new device**. Your device searches for other Bluetooth-enabled devices and displays them in a list.
4. Tap the name of the other device, and tap **Next**.
5. In **Passcode**, enter an alphanumeric passcode between 1 and 16 characters, and tap **Next**. Using a passcode provides enhanced security.  
If you do not want to enter a passcode, leave it blank, and tap **Next**.
6. Enter the same passcode on the other device.
7. To give the partnership a more meaningful name, change the name of the device in **Display Name**.
8. Tap **Finish**.

## Accepting a Bluetooth partnership

1. Ensure that your device is turned on, visible, and within close range.
2. When prompted to accept a partnership with the requesting device, tap **Yes**.
3. If a passcode is requested, enter the same passcode that was entered on the requesting device, and tap **Next**. You must enter an alphanumeric passcode between 1 and 16 characters.
4. To give the partnership a more meaningful name, change the name of the device in **Display Name**.
5. Tap **Finish**.

## Ending a Bluetooth partnership

1. Tap **Start > Settings > Connections** tab.
2. Tap **Bluetooth > Devices** tab.
3. Tap and hold the partnership you want to end.
4. Tap **Delete**.

## Setting up an outgoing Bluetooth COM port

1. Ensure that your device is connected to the other device via Bluetooth.
2. Tap **Start > Settings > Connections** tab.
3. Tap **Bluetooth > COM Ports** tab.
4. Tap **New Outgoing Port**.
5. Select a numbered COM port from the list.  
If the port cannot be created, it is in use. Select a different numbered port.
6. To use this COM port to communicate only with devices with which your device has a Bluetooth partnership, select the **Secure Connection** check box.
7. Tap **Finish**.

---

### NOTE:


The list item **New Outgoing Port** will be available only if one or more Bluetooth-connected devices support serial (COM) connections.

---

## GSM/3G Switch

This function allows you to conveniently switch network type. The options include **Automatic**, **3G**, and **GSM**. The default setting is Automatic, which allows the device to search for the proper service automatically.

To choose network type

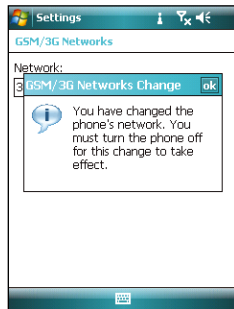
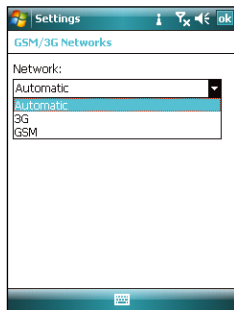
1. Tap **Start > Settings > Connections tab > GSM/3G Networks**.
2. Select a proper network type. Then tap  when finished.

3. A message pops up. Tap  and restart your device to make this change effective.

---

### NOTES:

- Network type varies with different service providers.
  - Ensure you choose the right network type for your SIM card.
- 



# RF Exposure Information (SAR)

## THIS MODEL MEETS INTERNATIONAL GUIDELINES FOR EXPOSURE TO RADIO WAVES

Your mobile device is a radio transmitter and receiver. It is designed not to exceed the limits for exposure to radio waves recommended by international guidelines. These guidelines were developed by the independent scientific organization ICNIRP and include safety margins designed to assure the protection of all persons, regardless of age and health.

The guidelines use a unit of measurement known as the Specific Absorption Rate, or SAR. The ICNIRP SAR limit for mobile devices used by the general public is 2 W/kg and the highest SAR value for this device when tested at the ear was 0.41 W/kg\*. As mobile devices offer a range of functions, they can be used in other positions, such as on the body as described in this user guide. In this case, the highest tested SAR value is 1.99 W/kg\*.

As SAR is measured utilizing the device's highest transmitting power, the actual SAR of this device while operating is typically below that indicated above. This is due to automatic changes to the power level of the device to ensure it only uses the minimum level required to reach the network.

While there may be differences between the SAR levels of various phones and at various positions, they all meet the governmental requirements for safe exposure. The improvements to this product model could cause differences in the SAR value for later products; in all cases, products are designed to be within the guidelines.

The World Health Organization has stated that present scientific information does not indicate the need for any special precautions for the use of mobile devices. They note that if you want to reduce your exposure then you can do so by limiting the length of calls or using a 'handsfree' device to keep the mobile phone away from the head and body.

Additional Information can be found on the websites of the World Health Organization (<http://www.who.int/emf>).

- \* The tests are carried out in accordance with international guidelines for testing. The limit incorporates a substantial margin for safety to give additional protection for the public and to account for any variations in measurements. Additional related information includes the ASUS testing protocol, assessment procedure, and measurement uncertainty range for this product.

## FCC Regulations

- This mobile phone complies with part 15 of the FCC Rules. Operation is subject to the following two conditions: (1) This device may not cause harmful interference, and (2) this device must accept any interference received, including interference that may cause undesired operation.
- This mobile phone has been tested and found to comply with the limits for a Class B digital device, pursuant to Part 15 of the FCC Rules. These limits are designed to provide reasonable protection against harmful interference in a residential installation. This equipment generates, uses and can radiated radio frequency energy and, if not installed and used in accordance with the instructions, may cause harmful interference to radio communications. However, there is no guarantee that interference will not occur in a particular installation. If this equipment does cause harmful interference to radio or television reception, which can be determined by turning the equipment off and on, the user is encouraged to try to correct the interference by one or more of the following measures:
  - Reorient or relocate the receiving antenna.
  - Increase the separation between the equipment and receiver.
  - Connect the equipment into an outlet on a circuit different from that to which the receiver is connected.
  - Consult the dealer or an experienced radio/TV technician for help.

Changes or modifications not expressly approved by the party responsible for compliance could void the user's authority to operate the equipment.

## RF Exposure Information (FCC SAR)

This model phone meets the government's requirements for exposure to radio waves.

This phone is designed and manufactured not to exceed the emission limits for exposure to radio frequency (RF) energy set by the Federal Communications Commission of the U.S. Government.

The exposure standard for wireless mobile phones employs a unit of measurement known as the Specific Absorption Rate, or SAR. The SAR limit set by the FCC is 1.6W/kg. \*Tests for SAR are conducted using standard operating positions accepted by the FCC with the phone transmitting at its highest certified power level in all tested frequency bands. Although the SAR is determined at the highest certified power level, the actual SAR level of the phone while operating can be well below the maximum value. This is because the phone is designed to operate at multiple power levels so as to use only the power required to reach the network. In general, the closer you are to a wireless base station antenna, the lower the power output.

The highest SAR value for the model phone as reported to the FCC when tested for use at the ear is 0.749 W/kg and when worn on the body, as described in this user guide, is 0.904 W/kg (Body-worn measurements differ among phone models, depending upon available enhancements and FCC requirements.)

While there may be differences between the SAR levels of various phones and at various positions, they all meet the government requirement.

The FCC has granted an Equipment Authorization for this model phone with all reported SAR levels evaluated as in compliance with the FCC RF exposure guidelines. SAR information on this model phone is on file with the FCC and can be found under the Display Grant section of <http://www.fcc.gov/oet/fccid> after searching on FCC ID: MSQ-1520.

For body worn operation, this phone has been tested and meets the FCC RF exposure guidelines for use with an accessory that contains no metal and the positions the handset a minimum of 1.5 cm from the body. Use of other enhancements may not ensure compliance with FCC RF exposure guidelines. If you do not use a body-worn accessory and are not holding the phone at the ear, position the handset a minimum of 1.5 cm from your body when the phone is switched on.

# Notices

## Replaceable batteries

If an equipment is provided with a replaceable battery and if replacement by an incorrect type could result in an explosion (such as with some lithium batteries), the following applies:

- The battery is placed in an OPERATOR ACCESS AREA, there shall be a marking close to the battery or a statement in both the operating and the servicing instructions;
- If the battery is placed elsewhere in the equipment, there shall be a marking close to the battery or a statement in the servicing instructions.

The marking or statement shall include the following or similar text:

### **CAUTION**

RISK OF EXPLOSION IF BATTERY IS REPLACED  
BY AN INCORRECT TYPE.  
DISPOSE USED BATTERIES ACCORDING TO  
THE INSTRUCTIONS

## **Operator access with a tool**

If a TOOL is necessary to gain access to an OPERATOR ACCESS AREA, either all other compartments within that area containing a hazard shall be inaccessible to the OPERATOR by the use of the same TOOL, or such compartments shall be marked to discourage OPERATOR access.

An acceptable marking for an electric shock hazard is (ISO 3864, No. 5036).

## **Equipment for restricted access locations**

For equipment intended only for installation in a RESTRICTED ACCESS LOCATION, the installation instructions shall contain a statement to this effect.

## **WARNING**

The user needs to switch off the device when exposed to areas with potentially explosive atmospheres such as petrol stations, chemical storage depots and blasting operations.

## ASUS

Address: 15 Li-Te Road, Peitou, Taipei, Taiwan

Tel: 886-2-2894-3447; Fax: 886-2-2890-7698

### Declaration

We declare that the IMEI codes for this product, **P550**, are unique to each unit and only assigned to this model. The IMEI of each unit is factory set and cannot be altered by the user and that it complies with the relevant IMEI integrity related requirements expressed in the GSM standards.

Should you have any questions or comments regarding this matter, please have our best attention.

Sincerely yours,

ASUSTeK COMPUTER INC.

Tel: 886-2-2894-3447

Fax: 886-2-2890-7698

E-mail: <http://vip.asus.com/eservice/techserv.aspx>

# Safety Information

## Phone care

**You should never** attempt to open the phone casing. There are no user-serviceable parts inside and you might damage sensitive electronic circuits and components. Unauthorized disassembly will void the warranty.

**You should never** leave your phone in the window of your car or otherwise expose it to strong sunlight or excessive heat for a prolonged period. This may damage it.

**You should never** handle your phone with wet hands or expose it to moisture or liquids of any kind. Continuous changes from a cold to a warm environment may lead to condensation inside the phone, resulting in corrosion and possible damage.

If you pack your phone in your suitcase during travel, beware of damage. Cramming a suitcase may crack the LCD display. Remember to switch off your wireless connections during air travel.

As with all other radio devices, touching the built-in antenna area during telephone conversation may impair the quality and lead to shorter standby time due to increased power consumption.

## The battery

Your device is equipped with a high-performance Li-Ion battery. Optional battery types may be available; check with your local retailer. Observe the maintenance guidelines and your battery should give you a long service life.

- At the beginning of the battery's life, fully charge and discharge (let it go flat) three times.
- Do not overcharge the Li-Ion battery, as this can result in a reduction in battery performance and lifespan. The recommended maximum charge time is three hours.
- Avoid repeated short charging. It is preferable to let the battery go flat and then recharge it completely.
- Avoid charging in strong heat or extreme cold. Ambient room temperature is preferable. The battery has its optimum performance in an ambient temperature of +5 °C to +50 °C.
- Do not store the battery near a fire or heat source.

- Use only the battery approved by the manufacturer.
- Never replace the battery with a non-approved battery.
- Never soak the battery in water or any other fluid.
- Never try to open the battery as it contains substances that might be harmful if swallowed or allowed to come into contact with unprotected skin.
- Never short-circuit the battery, as it may overheat and cause a fire. Keep it away from jewellery and other metal objects.
- Never dispose of the battery in a fire. It could explode and release harmful substances into the environment.
- Never dispose of the battery with your regular household waste. Take it to a hazardous material collection point.
- Do not touch the battery terminals.

## The charger

- Use only the charger supplied with your device.
- Never pull the charger cord to release it from the mains – pull the charger itself.

---

**WARNING!** There is a risk of explosion if the battery is replaced by an incorrect type.

---

## Memory card

- Do not remove or insert a memory card or turn off the handset while data on the card is being edited.
- Do not touch the metal terminals with your hands or metal objects.
- Do not bend the memory card or subject it to violent impacts. Keep it away from water and high temperatures.
- Keep all memory cards out of reach of small children.
- Do not short circuit the contact points or expose it to liquids or moisture. When not in use, keep it in the antistatic container it came in.
- Do not use force when inserting or handling the card, and do not expose it to excessive heat or strong magnetic fields.

## Cleaning and storing

- Your device should always be handled with care and protected from dirt, dust and dampness. To avoid scratches, never place your phone face down.
- If cleaning is necessary, switch off the device and wipe carefully with a soft, slightly damp (not wet) cloth. Use a cotton swab to clean the camera lens. Allow the phone to dry completely before switching it on. Never use solvents for cleaning.
- If you are not going to use your device for some time, fully charge the battery and store the phone in a dry place away from direct sunlight. Your device should be switched off during storage. Recharge every 6 to 12 months.
- Never expose your phone to heat or strong sunlight.
- Never expose your phone to moisture or liquids of any kind.
- Do not paint your phone or otherwise block the keypad, microphone, or earpiece function with stickers.

---

**WARNING!** Failure to follow these instructions may lead to serious personal injury and possible property damage.

---

## Driving safety

Never use the handheld devices while driving. It is an offense while driving to hold a phone or cradle it in your neck, at any point during the setup, making or taking of a phone call, text message or any other data related mobile communication. Use of fully installed car kits are still permitted, as are the use of alternate handsfree accessories.

In the interest of safety, we would recommend the use of a cradle while using any form of handsfree accessory.

While driving, we recommend that you use voicemail wherever possible, and that you listen to your messages when you are not in the car. If you must make a handsfree call when driving, keep it brief.

An airbag inflates with great force. Do not place objects, including both installed or portable wireless equipment, in the area over the airbag or in the airbag deployment area. If in-vehicle wireless equipment is improperly installed and the air bag inflates, serious injury could result.

# Electronic devices

Most modern electronic equipment is shielded from RF energy.

However, certain electronic equipment may not be shielded against the RF signals from your device.

## Pacemakers

The Health Industry Manufacturers' Association recommends that a minimum separation of six (6") inches be maintained between a phone and a pacemaker to avoid potential interference with the pacemaker. These recommendations are consistent with the independent research by and recommendations of Wireless Technology Research.

### **If you have a pacemaker:**

- Always keep your phone more than six inches from your pacemaker when turned on.
- Do not carry your phone in a breast pocket.
- Use the ear opposite the pacemaker to minimize the potential for interference.
- If you have any reason to suspect that interference is taking place, turn off your device immediately.

## Hearing aids

Some digital devices may interfere with some hearing aids. In the event of such interference, call ASUS Customer Service to discuss alternatives.

## Other medical devices

If you use any other personal medical device, consult the manufacturer of your device to determine if it is adequately shielded from external RF energy. Your physician may be able to assist you in obtaining this information.

Turn off your device in healthcare facilities when any regulations posted in these areas instruct you to do so.

Hospitals or healthcare facilities may be using equipment that could be sensitive to external RF energy.

## Vehicles

RF signals may affect improperly installed or inadequately shielded electronic systems in motor vehicles. Check with the manufacturer or its representative regarding your vehicle. You should also consult the manufacturer of any equipment added to your vehicle.

## Posted facilities

Turn off your device where posted notices so require.

## Magnetic media

Magnetic fields generated by Pocket PC Phone phones may damage data on magnetic storage media, such as credit cards, computer discs or tapes. Do not place your device next to such media.

You should never expose your device to strong magnetic fields as this may cause temporary malfunction.

## Other Safety Guidelines

### Aircraft

Regulations prohibit using your phone while in the air. Switch off your device before boarding an aircraft or turn off the wireless connections.

### Blasting areas

To avoid interfering with blasting operations, turn off your device when in a 'blasting area' or in areas posted: 'Turn off two-way radio.' Obey all signs and instructions.

### Potentially explosive environments

Turn off your device when in any area with a potentially explosive environment and obey all signs and instructions.

Sparks in such areas could cause an explosion or fire resulting in bodily injury or even death.

Areas with a potentially explosive environment are often, but not always, clearly marked. They include fuelling areas such as gas stations, below decks on boats, fuel or chemical transfer or storage facilities, vehicles using liquified petroleum gas (such as propane or butane), areas where the air contains chemicals or articles, such as grain, dust, or metal powders, and any other area where you would normally be advised to turn off your vehicle's engine.

## Choking

Keep your device away from children as the SIM card and other small parts present a choking hazard.

## Cautions

Your Pocket PC Phone is a high quality piece of equipment. Before operating, read all instructions and cautionary markings on (1) AC Adapter (2) Battery and (3) Product Using Battery.

- **Do not** use this device in an extreme environment where high temperature or high humidity exists.
- **Do not** abuse the device. Avoid striking, shaking or giving it a shock. When not using the unit, lay it down to avoid possible damage due to instability.
- **Do not** expose this device to rain or spilled beverages.
- **Do not** use unauthorized accessories.
- **Do not** disassemble the device or its accessories. If service or repair is required, return the unit to an authorized service center. If the unit is disassembled, a risk of electric shock or fire may result.
- **Do not** short-circuit the battery terminals with metal items.

# Contact information

## **ASUSTeK COMPUTER INC. (Taiwan)**

Hotline: 0800-093-456 (Toll-Free call from Taiwan only)

Fax: 886-2-2895-9254

E-mail: <http://vip.asus.com/eservice/techserv.aspx>

WWW: <http://tw.asus.com>

## **ASUSTeK COMPUTER INC. (Asia-Pacific)**

Hotline: 886-2-2894-3447

Fax: 886-2-2890-7698

E-mail: <http://vip.asus.com/eservice/techserv.aspx>

WWW: <http://www.asus.com>

## **ASUS COMPUTER GmbH (Germany/Austria)**

Hotline: MB/Others: +49-2102-9599-0

Notebook: +49-2102-9599-10

Fax: +49-2102-9599-11

E-mail: <http://www.asus.de/support/support.htm>

WWW: <http://www.asus.de>

## **ASUS COMPUTER (China)**

Tel: +86-10-82667575

E-Mail: <http://vip.asus.com.cn/eservice/techserv.aspx>.