



# Padfone<sup>™</sup> Station Dock

**Quick Start Guide**



E7192  
First Edition  
March 2012

Copyright © 2012 ASUSTek Computers, Inc.

All Rights Reserved.

No part of this manual, including the products and software described in it, may be reproduced, transmitted, transcribed, stored in a retrieval system, or translated into any language in any form or by any means, except documentation kept by the purchaser for backup purposes, without the express written permission of ASUS Telecom ("ASUS").

Product warranty or service will not be extended if: (1) the product is repaired, modified or altered, unless such repair, modification of alteration is authorized in writing by ASUS; or (2) the serial number of the product is defaced or missing.

ASUS PROVIDES THIS MANUAL "AS IS" WITHOUT WARRANTY OF ANY KIND, EITHER EXPRESS OR IMPLIED, INCLUDING BUT NOT LIMITED TO THE IMPLIED WARRANTIES OR CONDITIONS OF MERCHANTABILITY OR FITNESS FOR A PARTICULAR PURPOSE. IN NO EVENT SHALL ASUS, ITS DIRECTORS, OFFICERS, EMPLOYEES OR AGENTS BE LIABLE FOR ANY INDIRECT, SPECIAL, INCIDENTAL, OR CONSEQUENTIAL DAMAGES (INCLUDING DAMAGES FOR LOSS OF PROFITS, LOSS OF BUSINESS, LOSS OF USE OR DATA, INTERRUPTION OF BUSINESS AND THE LIKE), EVEN IF ASUS HAS BEEN ADVISED OF THE POSSIBILITY OF SUCH DAMAGES ARISING FROM ANY DEFECT OR ERROR IN THIS MANUAL OR PRODUCT.

SPECIFICATIONS AND INFORMATION CONTAINED IN THIS MANUAL ARE FURNISHED FOR INFORMATIONAL USE ONLY, AND ARE SUBJECT TO CHANGE AT ANY TIME WITHOUT NOTICE, AND SHOULD NOT BE CONSTRUED AS A COMMITMENT BY ASUS. ASUS ASSUMES NO RESPONSIBILITY OR LIABILITY FOR ANY ERRORS OR INACCURACIES THAT MAY APPEAR IN THIS MANUAL, INCLUDING THE PRODUCTS AND SOFTWARE DESCRIBED IN IT.

Products and corporate names appearing in this manual may or may not be registered trademarks or copyrights of their respective companies, and are used only for identification or explanation and to the owners' benefit, without intent to infringe.

Thank you for purchasing another cool ASUS product!

Before you start, ensure that you have read all the safety information and operating instructions in the **Important Notices** bundled with your PadFone to prevent injury or damage to your device.

---

**NOTE:** This bundled Quick Start Guide is for reference only and is subject to change without prior notice. For the latest updates and more detailed information, please visit [www.asus.com](http://www.asus.com).

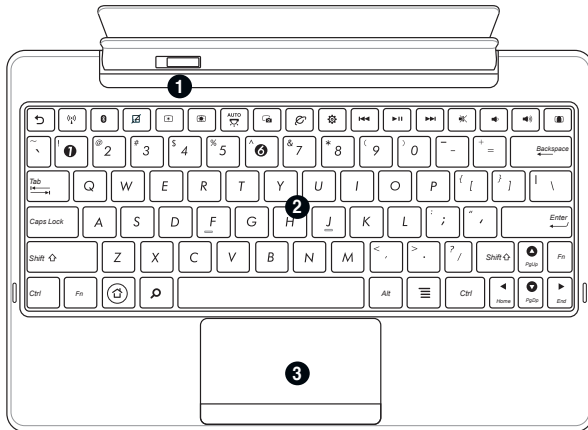
---

## Getting to know your PadFone Station Dock

### Overview

#### Top view features

- 1 Latch
- 2 Keyboard
- 3 Touchpad



#### Left side features

- 4** 40-pin USB connector
- 5** LED indicator
- 6** USB slot



#### Right side features

- 7** MMC, SD, SDHC card slot
- 8** USB slot



## Charging your PadFone Station Dock

We strongly recommend that you charge your PadFone Station Dock fully before you use it with your PadFone Station.

To charge your PadFone Station Dock:

1. Connect the power plug into the USB charger. Ensure that the power plug is attached securely in place.
2. Connect the USB connector into the USB charger's USB port.
3. Connect the micro USB connector into your PadFone Station Dock.
4. Insert the power plug into a wall socket.

---

**CAUTION!** Double-check the connections and ensure that the power plug is securely attached to the AC Adapter to prevent overheating and damage to the cables, adapter, or device.

---

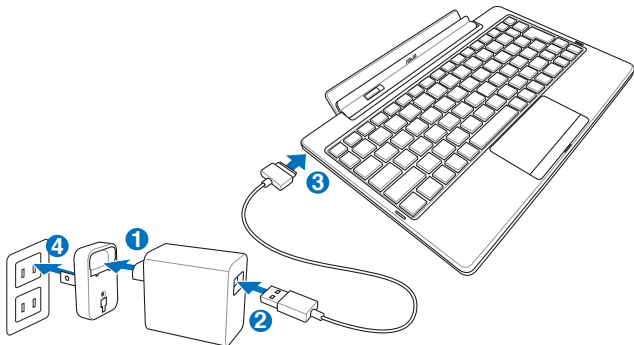
---

**IMPORTANT** The 40-pin connector/port is used for charging your PadFone Station Dock only. It can not be used for transferring data.

---

### NOTICE

- Use only the power adapter that comes with your device. Using a different power adapter may damage your device.
  - Using the provided USB charger and USB cable to connect your PadFone Station Dock to a power outlet is the best way to charge your PadFone Station Dock.
  - The input voltage range between the wall outlet and this adapter is AC 100V - 240V; the output voltage through the micro-USB cable is DC 15V, 1.2A.
- 



## Docking your PadFone Station into the PadFone Station Dock

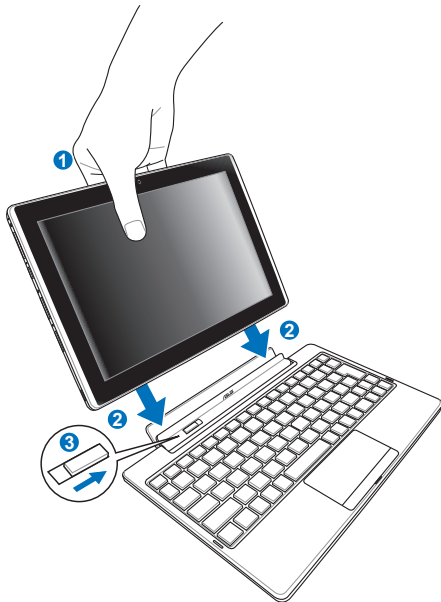
To dock your PadFone Station into your PadFone Station Dock:

1. Align the PadFone Station with the PadFone Station Dock.
2. Firmly insert the PadFone Station into the socket until the latch hooks click in-place and the PadFone Station is securely seated on the dock.
3. Ensure that the latch completely moves to the right.

---

**CAUTION!** Always pickup the entire device assembly from the bottom when your PadFone Station is attached to the PadFone Station Dock.

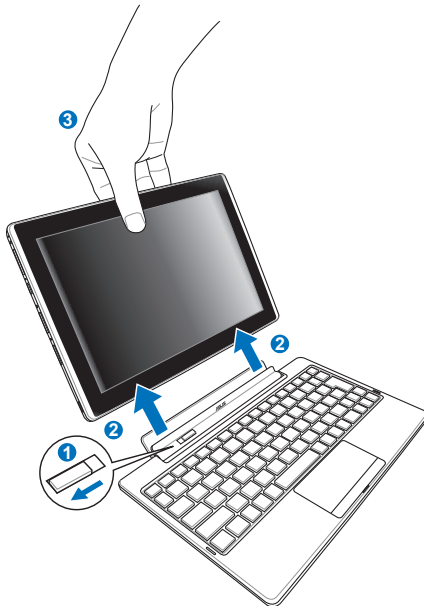
---



## Undocking your PadFone Station from the PadFone Station Dock

To undock your PadFone Station from the PadFone Station Dock:

1. Move the latch to the left to release the PadFone Station from the PadFone Station Dock.
2. Gently remove the PadFone Station from the dock.
3. Ensure that the PadFone Station is completely detached from the dock.



## Charging your PadFone, PadFone Station, and PadFone Station Dock

To charge:

1. Connect the power plug into the USB charger. Ensure that the power plug is attached securely in place.
2. Connect the USB connector into the USB charger's USB port.
3. Connect the micro USB connector into your PadFone Station Dock.
4. Insert the power plug into a wall socket.

---

**CAUTION!** Double-check the connections and ensure that the power plug is securely attached to the AC Adapter to prevent overheating and damage to the cables, adapter, or device.

---

### IMPORTANT

- The 40-pin connector/port is used for charging your device only. It can not be used for transferring data.
  - The respective batteries of the device assembly charges in the following sequence, PadFone Station Dock > PadFone Station > PadFone.
- 

### NOTICE

- Use only the power adapter that comes with your device. Using a different power adapter may damage your device.
  - Using the provided USB charger and USB cable to connect your PadFone Station Dock to a power outlet is the best way to charge your PadFone Station Dock.
  - The input voltage range between the wall outlet and this adapter is AC 100V - 240V; the output voltage through the micro-USB cable is DC 15V, 1.2A.
- 

