

GigaX1005/GigaX1008

Networking Switch

Quick Installation Guide

# Technical specifications

<b>GigaX1005/GigaX1008</b>	
<b>Ports</b>	5 RJ-45 10/100 Mbps ports (GigaX1005) 8 RJ-45 10/100 Mbps ports (GigaX1008) Auto-MDI/MDIX
<b>Standards</b>	IEEE 802.310 Base-T IEEE 802.3u 100 Base-TX IEEE 802.3x full-duplex flow control
<b>Performance</b>	1K for Media Access Control (MAC) addressing 1.0 Gbps switching fabric (GigaX1005) 1.6 Gbps switching fabric (GigaX1008) Forwarding rate for 64-byte packets: 148,810 pps to 100 Mbps ports 14,880 pps to 10 Mbps ports Non-blocking full-wire speed
<b>Power</b>	9VAC/1A
<b>EMI</b>	FCC Class B/CE Mark B/V CCI-B/CCC/C-TICK/MIC
<b>Operating Temperature</b>	0 ~40C (32 ~ 104F)
<b>Operating Humidity</b>	10% ~ 90%

Thank you for buying the ASUS GigaX1005/GigaX1008 switch! The switch integrates 100Mbps Fast Ethernet and 10Mbps Ethernet network capabilities in a compact design ideal for small workgroup applications.

## Package contents

- ☑ 5-port or 8-port 10/100Mbps Fast Ethernet switch
- ☑ AC power adapter
- ☑ Quick installation guide



---

If any item is damaged or missing, contact your retailer immediately.

---

## Connecting computers to the switch

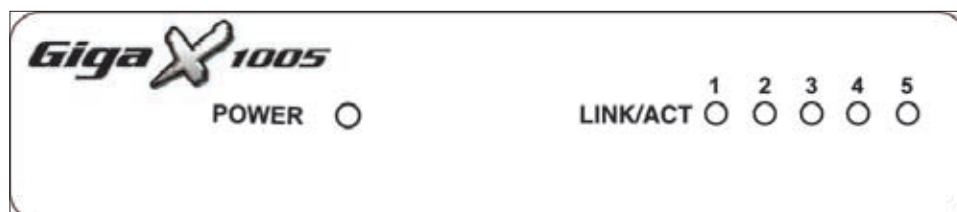
This switch features auto-MDI/MDIX crossover detection function and provides plug-and-play capability, so you can plug the network cable to the switch directly. The switch automatically detects the type of cable attached to it, and adjusts the speed and duplex.

## Powering on

1. Connect the female plug of the AC power adapter to the power port on the switch rear panel.
2. Connect the male plug of the adapter to an AC power source.

## Front panel LED indicators

After installing the switch, you can check its status from the LED indicators on the front panel.



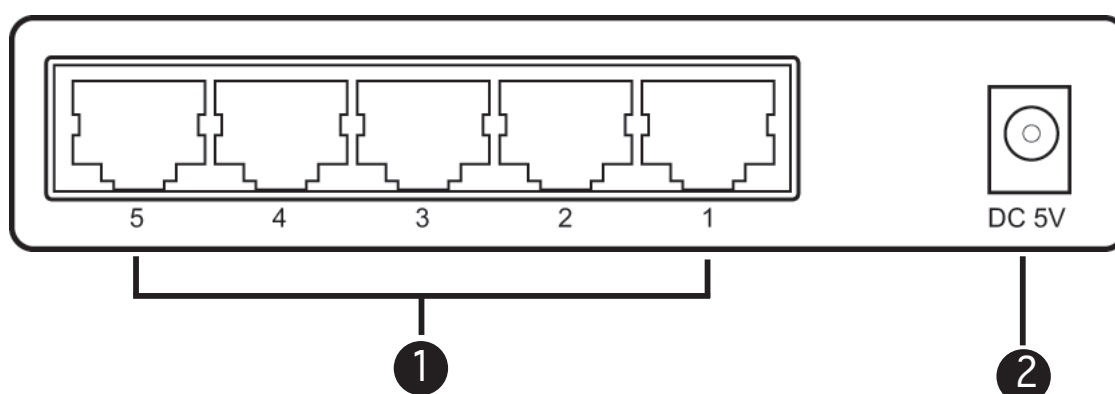
GigaX1005



GigaX1008

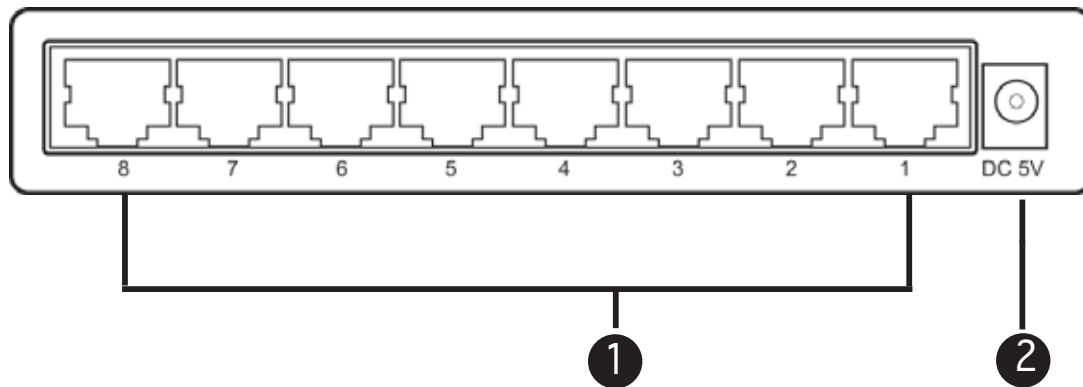
LED	Color	Status	Description
POWER	Green	ON OFF	The switch is on. The switch is off.
LINK/ACT	Green	ON BLINKING	Link is established. Link is established, and data is being transmitted or received.

## Rear panel ports



GigaX1005

1. **Ports 1-5.** The switch has eight 10/100Mbps RJ-45 ports where you can connect computers or network devices to the switch.
2. **Power port.** This port connects the AC power adapter.



## GigaX1008

1. **Ports 1-8.** The switch has eight 10/100Mbps RJ-45 ports where you can connect computers or network devices to the switch.
2. **Power port.** This port connects the AC power adapter.



---

To prevent damage to the unit, use only the AC adapter that came with the switch.

---