



Table of Contents

English	1
Bahasa Indonesia	17
한국어	32
简体中文	47
繁體中文	62
ไทย	77
Türkçe	92

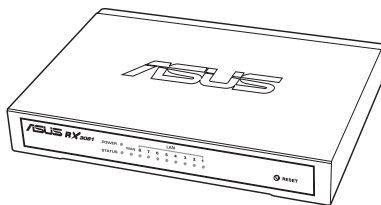




English



RX3081
BROADBAND ROUTER
with
8-Port Switch





ASUS Contact Information

ASUSTeK COMPUTER INC. (Asia-Pacific)

Company address: 15 Li-Te Road, Beitou, Taipei 11259
Telephone: +886-2-2894-3447
Fax: +886-2-2890-7798
E-mail: info@asus.com.tw
Web site: <http://www.asus.com.tw>

ASUS COMPUTER INTERNATIONAL (America)

Company address: 800 Corporate Way, Fremont, CA 94539, USA
General (fax): +1-510-608-4555
Web site address: <http://usa.asus.com>

Technical support

General support: +1-502-995-0883
Support (fax): +1-502-933-8713
Online support: <http://vip.asus.com/eservice/techserv.aspx>

ASUS COMPUTER GmbH (Germany & Austria)

Company address: Harkortstr. 21-23, 40880 Ratingen, Germany
General (tel): +49-2102-95990
General (fax): +49-2102-959911
Web site address: <http://www.asuscom.de>
Online contact: <http://www.asuscom.de/sales>

Technical support

Components: +49-1805-95990
Fax: +49-2102-959911
Online support: <http://vip.asus.com/eservice/techserv.aspx?SLanguage=de-de>
Global service center: <http://support.asus.com/service/service.aspx?SLanguage=en-us>
FAQ: <http://support.asus.com/faq/faq.aspx?SLanguage=en-us>
Online technical support: <http://support.asus.com/techserv/techserv.?SLanguage=en-us>





Feature highlights

3-Step Easy Setup wizard

Allows you to conveniently set up your device in three easy steps.

Built-in DHCP server

The built-in Dynamic Host Configuration Protocol (DHCP) provides a dynamic IP host address and other related configuration information such as the subnet mask and default gateway upon request. The router acts as a DHCP server for devices (clients) on your LAN.

Multi DMZ Host Function

Configure one computer in your network to allow unrestricted two-way communication with servers or individual users on the Internet.

Supports PPTP, PPPoE and L2TP

The WAN port supports Point-to-point Protocol over Ethernet (PPPoE), Point-to-Point Tunnel Protocol (PPTP) and "Direct Connection" type service.

Support up to 253 users, 10,000 Sessions

With eight LAN ports, RX3081 supports up to 10,000 sessions.

Advanced Security Management

RX3081's web graphics user interface (web GUI) enables you to configure the router settings such as firmware upgrade, password authentication, port redirection, IP Filtering and other security features.

MAC Cloning

RX3081 enables you to clone your computer's MAC address to your router.



Package contents

- RX3081 router x 1
- AC power adapter x 1
- Quick Start Guide x 1
- Support CD x 1 (User manual included)
- Warranty card x 1
- RJ45 cable x 1



- Contact your retailer if any of these items is damaged or missing.

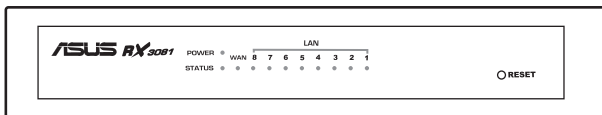




Hardware features

Front panel

The front panel contains LED indicators that show the status of the unit.



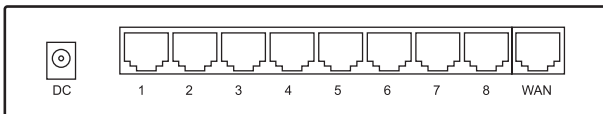
LED	Status	Description
POWER	On	The router is ON.
	Off	The router is OFF.
LAN (1-8)	On	Link is established.
	Blinking	Link is established, and data is being sent or received.
WAN	On	Link is established.
	Blinking	Link is established, and data is being sent or received.
STATUS	On	The device is not responding and require some maintenance.
	Blinking	The device is up and ready.



Button	Description
Reset	<ul style="list-style-type: none">Using a pointed object such as a ballpen, short-press to reboot the device.Using a pointed object such as a ballpen, long-press to restore the system to its factory default settings.

Rear panel

The rear panel contains the DC power port, one RJ-45 WAN port, and eight RJ-45 LAN ports.



Item	Description
Power (DC)	Connects to the DC power adapter.
WAN (RJ-45 port x 1)	Connects to the Internet through cable or DSL modem.
LAN (RJ-45 port x 8)	Connects to the Local Area Network (LAN) via Ethernet hub, switch, or directly to your computer.

System requirements

Before installing the RX3081 router, ensure that your system meets the following requirements:

- Computers with enabled TCP/IP protocols
- DSL or cable modem for Internet connection
- RJ-45 port (10/100Base-T)
- Web browser



Installation the router

1. Connect one end of an RJ-45 port to the RJ-45 port on your DSL/cable modem, then connect the other end to the WAN port of your RX3081.
2. Using another RJ-45 cable, connect one end to the network port of your computer then connect the other end to an available LAN port in your RX3081. Repeat this step to connect more devices, you can connect up to eight (8) devices to your RX3081.
3. Power on the DSL/ Cable modem and ensure that a link with ISP is established, then turn the RX3081 power on.
4. Check the LED indicators to view the status of your router.



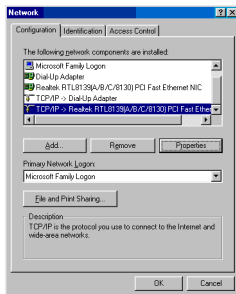
Configuring clients in your LAN

Your RX3081 router comes with built-in DHCP server functions that is used to automatically assign an IP address for clients or computers in your network.

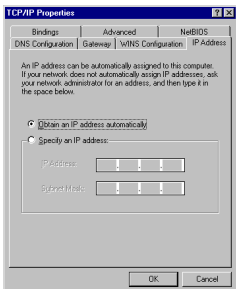
Below are the procedures for configuring your computer. Follow the instructions for the operating system that you are using.

Windows® 9x/ME

1. Click **Start > Control Panel > Network** to display the Network setup window.
2. From the Configuration tab, click **Properties**.

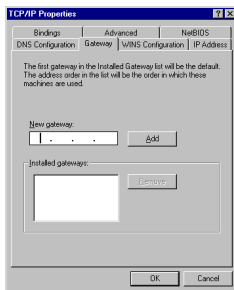


3. If you want your computer to automatically obtain an IP address, click **Obtain an IP address automatically** then click **OK**. Otherwise, click **Specify an IP address**, then key in the **IP address** and **Subnet Mask**.

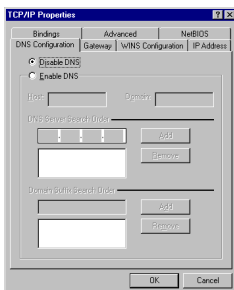




4. Select **Gateway** tab, and key in **New gateway** then click **Add**.



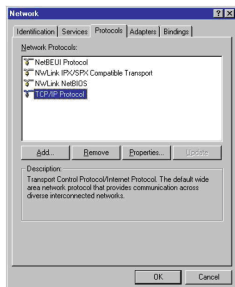
5. Select **DNS configuration** tab then click **Enable DNS**. Key in **Host**, **Domain**, and **DNS Server Search Order**, then click **Add**.
6. Click **OK**.



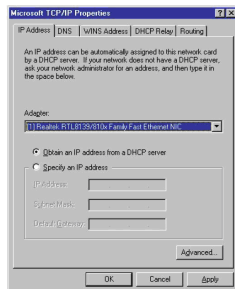


Windows® NT4.0

1. Go to **Control Panel > Network** to display the Network setup window then select the **Protocols** tab.
2. Select **TCP/IP Protocol** from the Network Protocols list then click **Properties**.

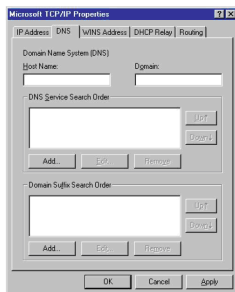


3. From the IP Address tab of the Microsoft TCP/IP Properties window, you can:
 - Select the type of network adapter installed in your system.
 - Set the router to assign IP addresses automatically.
 - Manually set up the IP address, subnet mask, and default gateway.



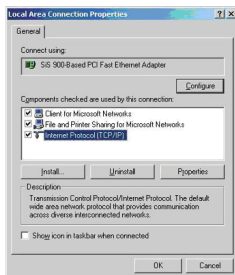


4. Select DNS tab then click **Add** under the DNS Service Search Order and key in DNS.



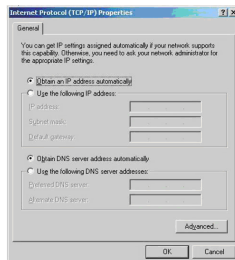
Windows® 2000

1. Click **Start > Control Panel > Network and Dial-up Connection**. Right-click **Local Area Connection** then click **Properties**.
2. Select **Internet Protocol (TCP/IP)**, then click **Properties**.





3. Select **Obtain an IP address automatically** if you want the IP settings to be assigned automatically. Otherwise, select **Use the following IP address:** and key in **IP address**, **Subnet mask**, and **Default gateway**.
4. Select **Obtain DNS server address automatically** if you want the DNS server settings to be assigned automatically. Otherwise, select **Use the following DNS server address:** and key in the **Preferred** and **Alternate DNS server**.
5. Click **OK** when done.

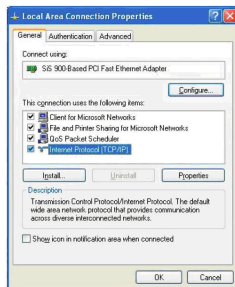


- We recommend that you set the router's IP address <http://192.168.1.1> (the router's default IP address) as the default gateway.

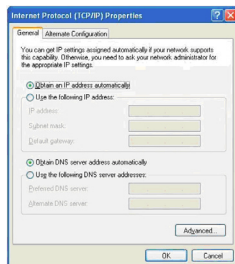


Windows® XP

1. Click **Start**, select **Control Panel > Network Connection**. Right-click **Local Area Connection** then select **Properties**.



2. Select **Internet Protocol (TCP/IP)**, then click **Properties**.



3. Select **Obtain an IP address automatically** if you want the IP settings to be assigned automatically. Otherwise, select **Use the following IP address:** and key in **IP address**, **Subnet mask**, and **Default gateway**.
4. Select **Obtain DNS server address automatically** if you want the DNS server settings to be assigned automatically. Otherwise, select **Use the following DNS server addresses:** and key in the **Preferred and Alternate DNS server**.
5. Click **OK** when done.



- We recommend that you set the router's IP address as the default gateway.



Configuring the router

The RX3081 Router comes with a web-based configuration utility. Access this utility from any clients in the network.



- We recommend you to use Microsoft® Internet Explorer 5.0 or later, or Netscape Navigator 4.7 or later.
- Before configuring your router, ensure that you obtain the following information from your Internet Service Provider (ISP):
 - The type of IP address (static or dynamic) assigned to clients on your LAN.
 - The type of connection service (PPTP or PPoE) and all the related information about the connection service (such as username and password).

Logging in to the router's web interface

To log in to your router:

1. Launch the web browser then key in <http://192.168.1.1> (the router's default IP address) in the address box of the web browser and press Enter.
2. From the login window, key in the default user name (admin) and password (admin), then click **OK**.



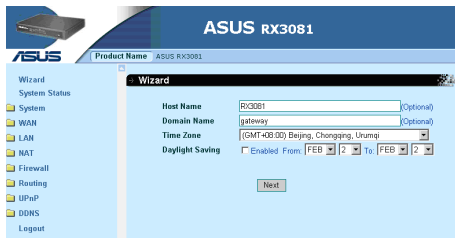


RX3081 Broadband Router Quick Start Guide

English

Quick Setup

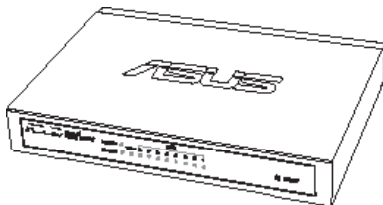
The RX3081 Router enables you to quickly set up the basic settings of the router such as the hostname, domain name, time zone, and daylight saving time. To do this, click **Wizard**, then follow the succeeding instructions.





RX3081
BROADBAND ROUTER
dengan
Switch 8 Port

Bahasa Indonesia





Informasi Kontak ASUS

ASUSTeK COMPUTER INC. (Asia-Pasifik)

Alamat kantor: 15 Li-Te Road, Beitou, Taipei 11259
Telepon: +886-2-2894-3447
Faks: +886-2-2890-7798
E-mail: info@asus.com.tw
Situs Web: <http://www.asus.com.tw>

ASUS COMPUTER INTERNATIONAL (Amerika)

Alamat kantor: 800 Corporate Way, Fremont, CA 94539, A.S.
Umum (faks): +1-510-608-4555
Alamat situs Web: <http://usa.asus.com>

Dukungan teknis

Dukungan umum: +1-502-995-0883
Dukungan (faks): +1-502-933-8713
Dukungan online: <http://vip.asus.com/eservice/techserv.aspx>

ASUS COMPUTER GmbH (Jerman & Austria)

Alamat kantor: Harkortstr. 21-23, 40880 Ratingen, Jerman
Umum (telp): +49-2102-95990
Umum (faks): +49-2102-959911
Alamat situs Web: <http://www.asuscom.de>
Kontak online: <http://www.asuscom.de/sales>

Dukungan teknis

Komponen: +49-1805-95990
Faks: +49-2102-959911
Dukungan online: <http://vip.asus.com/eservice/techserv.aspx?SLanguage=de-de>
Pusat layanan global: <http://support.asus.com/service/service.aspx?SLanguage=en-us>
Tanya Jawab: <http://support.asus.com/faq/faq.aspx?SLanguage=en-us>
Dukungan teknis online: <http://support.asus.com/techserv/techserv.?SLanguage=en-us>





Keterangan fitur

Panduan Konfigurasi 3 Langkah Mudah

Digunakan untuk mengkonfigurasi perangkat dalam tiga langkah mudah.

Server DHCP internal

DHCP (Dynamic Host Configuration Protocol) internal memberikan alamat host IP dinamis serta informasi konfigurasi terkait lainnya, seperti subnet mask dan gateway default sesuai permintaan. Router berfungsi sebagai server DHCP untuk perangkat (klien) di LAN.

Fungsi Host Multi DMZ

Mengkonfigurasi satu komputer di jaringan untuk digunakan dalam komunikasi dua arah tanpa batas dengan server atau pengguna di Internet.

Mendukung PPTP dan PPPoE

Port WAN mendukung layanan jenis PPPoE (Point-to-point Protocol over Ethernet), PPTP (Point-to-Point Tunnel Protocol), dan "Direct Connection" (Sambungan Langsung).

Mendukung hingga 253 pengguna, 10.000 Sesi

Dengan delapan port LAN, RX3081 mendukung hingga 10.000 sesi.

Manajemen Keamanan Lanjutan

GUI Web (interface pengguna grafis Web) RX3081 dapat digunakan untuk mengkonfigurasi pengaturan router, misalnya upgrade firmware, otentikasi sandi, pengarahan ulang port, Penyaringan IP, dan fitur keamanan lainnya.

Kloning MAC

RX3081 dapat digunakan untuk mengkloning alamat MAC komputer ke router.





Panduan Ringkas RX3081 Broadband Router

Isi kemasan

- 1 router RX3081
- 1 adaptor daya AC
- 1 Panduan Ringkas
- 1 CD dukungan (disertai Panduan pengguna)
- 1 Jaminan kartu
- 1 kabel RJ45



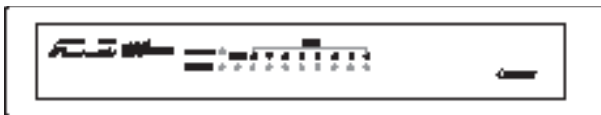
- Jika item tertentu rusak atau hilang, hubungi peritel Anda.



Fitur perangkat keras

Panel depan

Panel depan dilengkapi indikator LED untuk menunjukkan status unit.



LED	Status	Keterangan
DAYA	Aktif	Router aktif.
	Tidak aktif	Router tidak aktif.
LAN (1-8)	Aktif	Sambungan berlangsung.
	Berkedip	Sambungan berlangsung dan data sedang dikirim atau diterima.
WAN	Aktif	Sambungan berlangsung.
	Berkedip	Sambungan berlangsung dan data sedang dikirim atau diterima.
STATUS	Aktif	Perangkat tidak merespons dan memerlukan beberapa tindakan pemeliharaan.
	Berkedip	Perangkat telah siap.

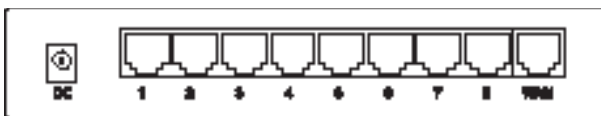


Panduan Ringkas RX3081 Broadband Router

Tombol	Keterangan
Atur ulang	<ul style="list-style-type: none">• Untuk menjalankan boot ulang pada perangkat, tekan sebentar tombol ini menggunakan benda berujung tajam, misalnya pulpen.• Untuk mengembalikan sistem ke pengaturan default pabrik, tekan terus tombol ini menggunakan benda berujung tajam, misalnya pulpen.

Panel belakang

Panel belakang dilengkapi port daya DC, 1 port WAN RJ-45, dan 8 port LAN RJ-45.



Item	Keterangan
Daya (DC)	Tersambung ke adaptor daya DC.
WAN (1 port RJ-45)	Terhubung ke Internet melalui modem DSL atau kabel.
LAN (8 port RJ-45)	Terhubung ke LAN (Local Area Network) melalui hub Ethernet, switch, atau secara langsung ke komputer.

Persyaratan sistem

Sebelum memasang RX3081 router, pastikan sistem telah memenuhi persyaratan sebagai berikut:

- Komputer yang mendukung protokol TCP/IP
- Modem kabel atau DSL untuk sambungan Internet
- Port RJ-45 (10/100Base-T)
- Browser Web





Pemasangan router

1. Pasang salah satu ujung konektor RJ-45 ke port RJ-45 di modem DSL/kabel, kemudian pasang ujung lainnya ke port WAN pada RX3081.
2. Sambungkan salah satu ujung kabel RJ-45 ke port jaringan komputer Anda, kemudian sambungkan ujung lainnya ke port LAN yang terdapat pada RX3081. Untuk menyambungkan perangkat lainnya, ulangi langkah ini. Anda dapat menyambungkan hingga 8 perangkat ke RX3081.
3. Aktifkan modem DSL/Kabel, pastikan sambungan ke ISP telah dibuat, kemudian aktifkan RX3081.
4. Periksa indikator LED untuk melihat status router.





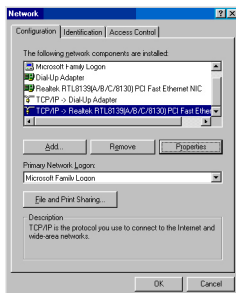
Mengkonfigurasi klien di LAN

Router RX3081 dilengkapi fungsi server DHCP internal yang digunakan untuk secara otomatis menetapkan alamat IP bagi klien atau komputer di jaringan Anda.

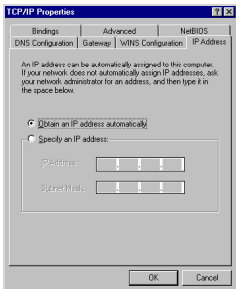
Berikut adalah prosedur untuk mengkonfigurasi komputer Anda. Ikuti petunjuk sesuai dengan sistem operasi yang digunakan.

Windows® 9x/ME

1. Klik **Start (Mulai) > Control Panel (Panel Kontrol) > Network (Jaringan)** untuk menampilkan jendela Konfigurasi jaringan.
2. Dari tab Konfigurasi, klik **Properties (Properti)**.

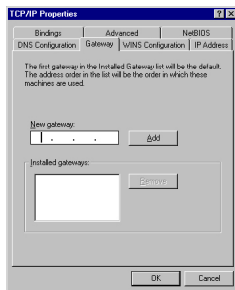


3. Jika ingin agar komputer mendapatkan alamat IP secara otomatis, klik **Obtain an IP address automatically (Dapatkan alamat IP secara otomatis)**, kemudian klik **OK**.
Cara lainnya, klik **Specify an IP address (Tentukan alamat IP)**, kemudian masukkan **IP address (Alamat IP)** dan **Subnet Mask**.



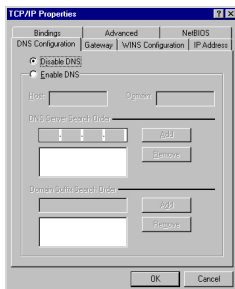


4. Pilih tab **Gateway**, masukkan **New gateway (Gateway baru)**, kemudian klik **Add (Tambah)**.



5. Pilih tab **DNS configuration (Konfigurasi DNS)**, kemudian klik **Enable DNS (Aktifkan DNS)**. Masukkan **Host**, **Domain**, dan **DNS Server Search Order (Urutan Pencarian Server DNS)**, kemudian klik **Add (Tambah)**.

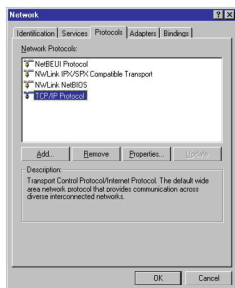
6. Klik **OK**.



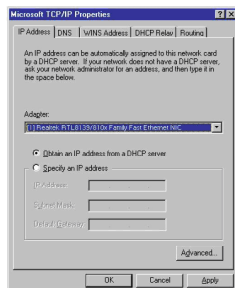


Windows® NT4.0

1. Buka **Control Panel (Panel Kontrol) > Network (Jaringan)** untuk menampilkan jendela Konfigurasi jaringan, lalu pilih tab **Protocols (Protokol)**.
2. Pilih **TCP/IP Protocol (Protokol TCP/IP)** dari daftar Network Protocols (Protokol Jaringan), kemudian klik **Properties (Properti)**.

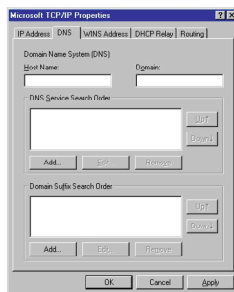


3. Dari tab **Alamat IP** di jendela **Properti TCP/IP Microsoft**, Anda dapat:
 - Memilih jenis adapter jaringan yang diinstall pada sistem.
 - Mengatur agar router menetapkan alamat IP secara otomatis.
 - Menetapkan alamat IP, subnet mask, dan gateway default secara manual.



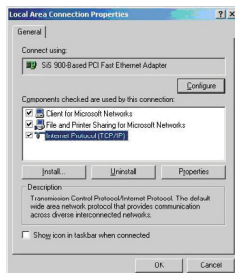


4. Pilih tab DNS, klik **Add (Tambah)** dalam **DNS Service Search Order (Urutan Pencarian Layanan DNS)**, kemudian masukkan DNS.



Windows® 2000

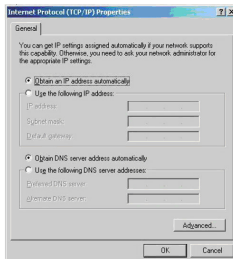
1. Klik **Start (Mulai) > Control Panel (Panel Kontrol) > Network and Dial-up Connection (Jaringan dan Sambungan Dial-up)**. Klik kanan **Local Area Connection (Sambungan Area Lokal)**, kemudian klik **Properties (Properti)**.
2. Pilih **Internet Protocol (TCP/IP)**, kemudian klik **Properties (Properti)**.





Panduan Ringkas RX3081 Broadband Router

3. Jika ingin agar pengaturan IP ditetapkan secara otomatis, pilih **Obtain an IP address automatically** (**Dapatkan alamat IP secara otomatis**). Cara lainnya, pilih **Use the following IP address** (**Gunakan alamat IP berikut**): kemudian masukkan **IP address** (**Alamat IP**), **Subnet mask** (**Subnet mask**), dan **Default gateway** (**Gateway default**).
4. Jika ingin agar pengaturan server DNS ditetapkan secara otomatis, pilih **Obtain DNS server address automatically** (**Dapatkan alamat server DNS secara otomatis**). Cara lainnya, pilih **Use the following DNS server address** (**Gunakan alamat server DNS berikut**): kemudian masukkan **Preferred** and **Alternate DNS server** (**Server DNS Pilihan dan Alternatif**).
5. Klik **OK** setelah selesai.

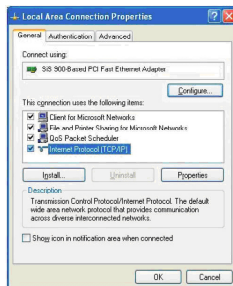


- Sebaiknya tetapkan alamat IP router ke <http://192.168.1.1> (alamat IP default router) sebagai gateway default.

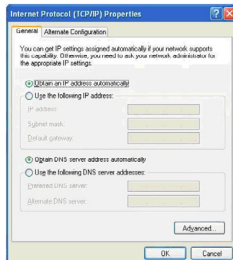


Windows® XP

1. Klik **Start (Mulai)**, pilih **Control Panel (Panel Kontrol)** > **Network Connection (Sambungan Jaringan)**. Klik kanan **Local Area Connection (Sambungan Area Lokal)**, lalu pilih **Properties (Properti)**.



2. Pilih **Internet Protocol (TCP/IP)** (Protokol Internet (TCP/IP)), kemudian klik **Properties (Properti)**.



3. Jika ingin agar pengaturan IP ditetapkan secara otomatis, pilih **Obtain an IP address automatically (Dapatkan alamat IP secara otomatis)**. Cara lainnya, pilih **Use the following IP address (Gunakan alamat IP berikut)**; kemudian masukkan **IP address (Alamat IP)**, **Subnet mask (Subnet mask)**, dan **Default gateway (Gateway default)**.
4. Jika ingin agar pengaturan server DNS ditetapkan secara otomatis, pilih **Obtain DNS server address automatically (Dapatkan alamat server DNS secara otomatis)**. Cara lainnya, pilih **Use the following DNS server addresses (Gunakan alamat server DNS berikut)**; kemudian masukkan **Preferred and Alternate DNS server (Server DNS pilihan dan alternatif)**.
5. Klik **OK** setelah selesai.



- Sebaiknya tetapkan alamat IP router sebagai gateway default.



Panduan Ringkas RX3081 Broadband Router

Mengkonfigurasi router

RX3081 Router dilengkapi dengan utilitas konfigurasi berbasis Web. Akses utilitas ini dari berbagai klien di jaringan.



- Sebaiknya gunakan Microsoft® Internet Explorer 5.0 atau versi lebih baru maupun Netscape Navigator 4.7 atau versi lebih baru.
- Sebelum mengkonfigurasi router, pastikan Anda telah mendapatkan informasi berikut dari ISP (Penyedia Layanan Internet):
 - Jenis alamat IP (statis atau dinamis) yang ditetapkan bagi klien di LAN.
 - Jenis layanan sambungan (PPTP atau PPoE) serta semua informasi terkait tentang layanan sambungan tersebut (misalnya, sandi dan nama pengguna).

Log in ke antarmuka Web router

Untuk log in ke router:

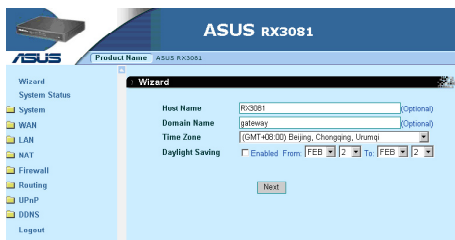
1. Buka browser Web, masukkan <http://192.168.1.1> (alamat IP default router) ke dalam kotak alamat browser Web, kemudian tekan Enter.
2. Dari jendela login, masukkan sandi (admin) dan nama pengguna default (admin), kemudian klik **OK**.





Konfigurasi Cepat

Router RX3081 dapat digunakan untuk mengkonfigurasi pengaturan dasar router dengan cepat, misalnya nama host, nama domain, zona waktu, dan waktu daylight saving. Untuk melakukannya, klik **Wizard (Panduan)**, kemudian ikuti petunjuk selanjutnya.

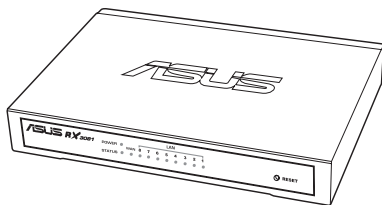




ASUS®

스위치 기능의
8포트 광대역 라우터
RX3081

한국어





ASUS 문의 정보

ASUSTeK COMPUTER INC. (아시아-태평양)

주소: 15 Li-Te Road, Beitou, Taipei 11259
전화: +886-2-2894-3447
Fax: +886-2-2890-7798
E-mail: info@asus.com.tw
웹사이트: <http://www.asus.com.tw>

ASUS COMPUTER INTERNATIONAL (미국)

주소: 800 Corporate Way, Fremont, CA 94539, USA
Fax: +1-510-608-4555
웹사이트: <http://usa.asus.com>

기술 지원

일반 지원: +1-502-995-0883
Fax 지원: +1-502-933-8713
온라인 지원: <http://vip.asus.com/eservice/techserv.aspx>

ASUS COMPUTER GmbH (독일 & 오스트리아)

주소: Harkortstr. 21-23, 40880 Ratingen, Germany
전화: +49-2102-95990
Fax: +49-2102-959911
웹사이트: <http://www.asuscom.de>
온라인 문의: <http://www.asuscom.de/sales>

기술 지원

부품: +49-1805-95990
Fax: +49-2102-959911
온라인 지원: <http://vip.asus.com/eservice/techserv.aspx?SLanguage=de-de>
글로벌 서비스 센터: <http://support.asus.com/service/service.aspx?SLanguage=en-us>
FAQ: <http://support.asus.com/faq/faq.aspx?SLanguage=en-us>
온라인 기술 지원: <http://support.asus.com/techserv/techserv.?SLanguage=en-us>

한국판





RX3081 광대역 라우터 빠른 시작 안내 설명서

주요 기능

세 단계의 편리한 설정 마법사

세 단계에 걸쳐 편리하게 장치를 설정할 수 있도록 도와줍니다.

내장 DHCP 서버

내장된 DHCP (Dynamic Host Configuration Protocol)는 클라이언트의 요청시 유동 IP 호스트 주소 및 서브넷 마스크 및 기본 게이트웨이와 같은 기타 관련 구성 정보를 제공합니다. 라우터는 LAN 상의 장치(클라이언트)에 대해 DHCP 서버처럼 동작하게 됩니다.

멀티 DMZ 호스트 기능

사용자의 네트워크에서 하나의 컴퓨터를 구성하여 서버 또는 인터넷 상의 개인 사용자와 제한이 없는 쌍방향의 통신이 가능합니다.

PPTP 및 PPPoE 지원

WAN 포트는 PPPoE(Point-to-point Protocol over Ethernet), PPTP(Point-to-Point Tunnel Protocol) 및 "다이렉트(직접) 연결" 방식의 서비스를 지원합니다.

최대 253명의 사용자와 10,000개의 세션 지원 가능

RX3081은 8개의 LAN 포트를 통해 최대 10,000개의 세션을 지원 가능합니다.

향상된 보안 관리

RX3081의 웹 기반 사용자 인터페이스(웹 GUI)를 통해 펌웨어 업그레이드, 비밀번호 인증, 포트 리디렉션, IP 필터링 및 기타 보안 기능과 같은 라우터 설정을 구성할 수 있습니다.

MAC 클론

RX3081을 통해 사용자 컴퓨터의 MAC 주소를 라우터에 복제할 수 있습니다.





패키지 구성

- RX3081 라우터 x 1
- AC 전원 어댑터 x 1
- 빠른 시작 안내 설명서 x 1
- 지원 CD x 1 (사용자 설명서 포함)
- 품질 보증 카드 x 1
- RJ45 케이블 x 1



- 위의 항목 중 하나라도 유실되었거나 손상되어 있을 경우 즉시 구입처에 문의해 주십시오.

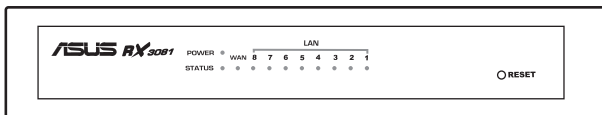


RX3081 광대역 라우터 빠른 시작 안내 설명서

하드웨어 기능

전면부

전면 패널은 장치의 상태를 보여주는 LED 표시등을 포함하고 있습니다.



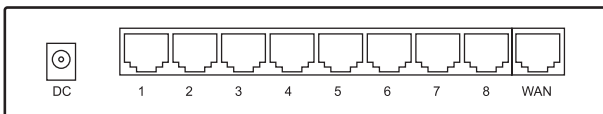
LED	상태	설명
POWER	켜짐	라우터의 전원이 켜진 상태
	꺼짐	라우터의 전원이 꺼진 상태
LAN (1~8)	켜짐	연결이 생성된 상태
	깜박임	연결이 생성되었으며, 데이터를 송수신 중인 상태
WAN	켜짐	연결이 생성된 상태
	깜박임	연결이 생성되었으며, 데이터를 송수신 중인 상태
STATUS	켜짐	장치가 응답을 하지 않으며, 유지 보수가 필요한 상태
	깜박임	장치의 전원이 켜져 있으며, 사용 준비가 완료된 상태



버튼	설명
Reset	<ul style="list-style-type: none">• 볼펜이나 종이 클립과 같은 뾰족한 물체를 이용해 장치를 다시 시작할 수 있습니다.• 볼펜이나 종이 클립과 같은 뾰족한 물체를 이용해 장치를 제조사의 기본 설정으로 복구할 수 있습니다.

후면부

후면부에는 DC 전원 포트와 1개의 RJ-45 WAN 포트와 8개의 RJ-45 LAN 포트를 포함하고 있습니다.



항목	설명
전원 (DC)	DC 전원 어댑터를 연결해 주십시오.
WAN (RJ-45 포트 x 1)	케이블을 이용해 인터넷 또는 DSL 모뎀에 연결해 주십시오.
LAN (RJ-45 포트 x 8)	Ethernet 허브, 스위치를 통해 LAN과 연결하거나 또는 사용자의 컴퓨터에 직접 연결할 수 도 있습니다.

시스템 요구 사양

RX3081 라우터를 설치하기 전에 사용자의 시스템이 아래 요구 사양을 만족하는지 확인해 주십시오:

- 컴퓨터에서 TCP/IP 프로토콜을 활성화했는지의 여부
- 인터넷 연결을 위한 DSL 또는 케이블 모뎀
- RJ-45 포트 (10/100Base-T)
- 웹 브라우저



RX3081 광대역 라우터 빠른 시작 안내 설명서

라우터 설치

1. RJ-45 케이블의 한 쪽 끝을 사용자의 DSL/케이블 모뎀에 연결하고, 다른 한 쪽 끝을 RX3081의 WAN 포트에 연결해 주십시오.
2. 또, 하나의 RJ-45 케이블을 이용해 한 쪽 끝을 컴퓨터의 네트워크 포트에 연결하고, 다른 한 쪽 끝을 RX3081의 사용 가능한 LAN 포트에 연결해 주십시오. 이와 같은 방식으로 최대 8개의 장치를 RX3081에 연결할 수 있습니다.
3. DSL/케이블 모뎀의 전원을 켜고, ISP와의 연결이 생성되었는지 확인하고, RX3081의 전원을 켜 주십시오.
4. LED 표시등을 통해 라우터의 상태 확인이 가능합니다.



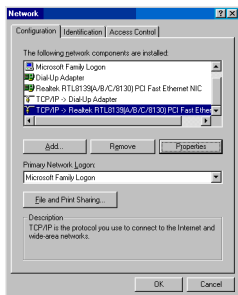
LAN에서 클라이언트 구성

사용자의 RX3081 라우터는 DHCP 서버 기능을 내장하여 네트워크의 클라이언트 또는 컴퓨터에 대해 자동으로 IP 주소를 지정할 수 있습니다.

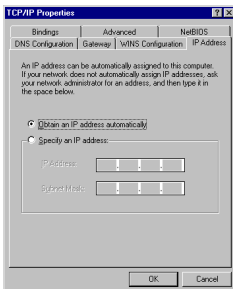
아래는 사용자의 컴퓨터 구성을 위한 절차입니다. 사용 중인 운영체제에 따른 지시사항을 따라 주십시오.

Windows® 9x/ME

1. **Start > Control Panel > Network**를 선택하면 네트워크 설정 창이 나타납니다.
2. Configuration 탭에서 **Properties**를 클릭해 주십시오.



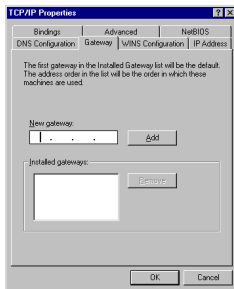
3. 사용자의 컴퓨터가 자동으로 IP 주소를 얻어 오도록 설정하려면 **Obtain an IP address automatically**를 클릭하고, OK를 클릭해 주십시오. 그렇지 않으면, **Specify an IP address**를 클릭하고, IP Address와 Subnet Mask 값을 입력해 주십시오.



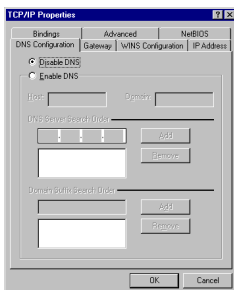


RX3081 광대역 라우터 빠른 시작 안내 설명서

4. Gateway 탭을 선택하고, New gateway 값을 입력한 후에 Add를 클릭해 주십시오.



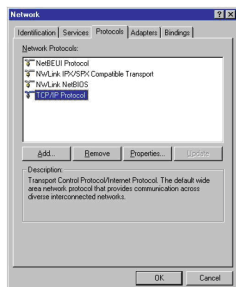
5. DNS configuration 탭을 선택하고, Enable DNS를 클릭해 주십시오. Host, Domain, 및 DNS Server Search Order 값을 입력하고, Add를 클릭해 주십시오.
6. OK를 클릭해 주십시오.



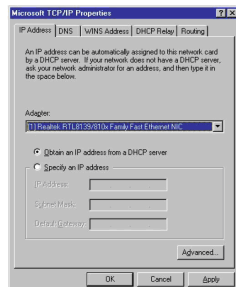


Windows® NT4.0

1. **Control Panel > Network**을 선택하면 나타나는 네트워크 설정 창에서 **Protocols** 탭을 선택해 주십시오.
2. 네트워크 프로토콜 목록에서 **TCP/IP Protocol**을 선택한 후에 **Properties**를 클릭해 주십시오.



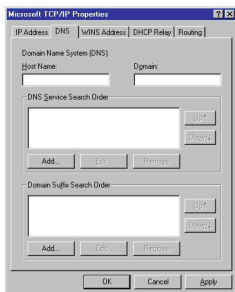
3. Microsoft TCP/IP Properties 창의 IP Address 탭에서 다음을 선택할 수 있습니다:
 - 시스템에 설치된 네트워크 어댑터의 방식 선택
 - 라우터가 IP 주소를 자동으로 지정하도록 설정
 - IP 주소, 서브넷 마스크, 기본 게이트웨이를 수동으로 설정.





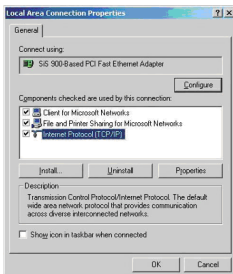
RX3081 광대역 라우터 빠른 시작 안내 설명서

4. DNS 탭을 선택한 후, **DNS Service Search Order** 항목에서 **Add**를 클릭하여 DNS를 입력해 주십시오.



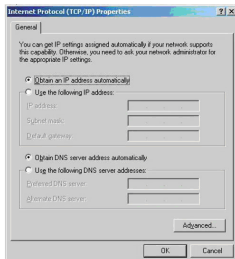
Windows® 2000

1. **Start > Control Panel > Network and Dial-up Connection**를 클릭해 주십시오. **Local Area Connection**에 마우스 오른쪽 버튼을 클릭한 후, **Properties**를 클릭해 주십시오.
2. **Internet Protocol (TCP/IP)**을 선택한 후에 **Properties**를 클릭해 주십시오.





3. IP 설정을 자동으로 받아오려면 **Obtain an IP address automatically**를 선택해 주십시오. 그렇지 않을 경우 **Use the following IP address**를 선택하여 **IP address, Subnet mask, Default gateway** 항목을 수동으로 입력해 주십시오.
4. DNS 설정을 자동으로 받아오려면 **Obtain DNS server address automatically**를 선택해 주십시오. 그렇지 않을 경우 **Use the following DNS server address**를 선택하여 **Preferred** 및 **Alternate DNS server**를 수동으로 입력해 주십시오.
5. 완료 후, **OK**를 클릭해 주십시오.



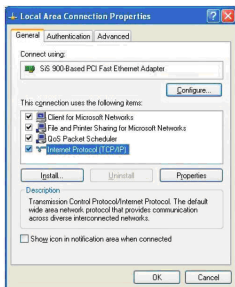
- 라우터의 IP 주소 <http://192.168.1.1> (라우터의 기본 IP 주소) 기본 게이트웨이 (Default Gateway)로 설정하도록 권장합니다.



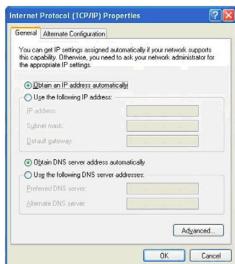
RX3081 광대역 라우터 빠른 시작 안내 설명서

Windows® XP

1. Start > Control Panel > Network Connection을 클릭해 주십시오. Local Area Connection 아이콘에 마우스 오른쪽 버튼을 클릭하고, Properties를 선택해 주십시오.



2. Internet Protocol (TCP/IP)를 선택하고, Properties를 클릭해 주십시오.



3. IP 설정을 자동으로 받아오도록 설정하려면 Obtain an IP address automatically를 선택해 주십시오. 그렇지 않을 경우 Use the following IP address를 선택하여 IP address, Subnet mask, 및 Default gateway를 수동으로 입력해 주십시오.
4. DNS 서버 설정을 자동으로 받아오도록 설정하려면 Obtain DNS server address automatically를 선택해 주십시오. 그렇지 않을 경우 Use the following DNS server addresses를 선택하여 Preferred and Alternate DNS server를 수동으로 입력해 주십시오.
5. 완료 후, OK를 클릭해 주십시오.



- 라우터의 IP 주소를 기본 게이트웨이로 설정해 주시길 권장합니다.



라우터 구성

RX3081 라우터는 웹 기반의 구성 유틸리티를 함께 제공합니다. 해당 네트워크의 모든 클라이언트는 이 유틸리티에 접속 가능합니다.



- Microsoft® Internet Explorer 5.0 또는, Netscape Navigator 4.7 이상 버전의 웹 브라우저를 사용하시길 권장합니다.
- 라우터를 구성하기 전에 ISP (Internet Service Provider)로부터 다음의 정보를 문의하여 주십시오:
 - LAN에서 클라이언트에 지정되는 IP 주소 방식(고정 또는 유동)
 - 연결 방식(PPTP 또는 PPoE) 및 연결 서비스(사용자 이름과 비밀번호와 같은)에 관련된 모든 정보

라우터에 로그인하기

라우터에 로그인하기:

1. 웹 브라우저를 실행하고, 주소 창에 <http://192.168.1.1> (라우터의 기본 IP 주소)를 입력한 후에 엔터를 눌러 주십시오.
2. 로그인 창에서 기본 User Name (admin)과 Password (admin)를 입력한 후, **OK**를 클릭해 주십시오.

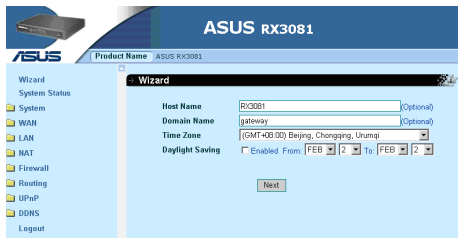




RX3081 광대역 라우터 빠른 시작 안내 설명서

빠른 설정 (Quick Setup)

RX3081 라우터를 통해 호스트 이름, 도메인 이름, 표준 시각, 일조 절약 시간과 같은 기본 사항들을 빠르게 설정할 수 있습니다. 빠른 설정을 시작하려면 **Wizard**를 클릭하고, 이어지는 지시사항에 따라 주십시오.



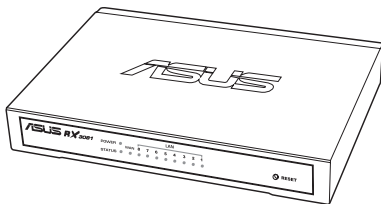
한국어



RX3081

宽频路由器

具备 8 端口交换机功能



简体中文



华硕的联系信息

华硕电脑公司 ASUSTeK COMPUTER INC. (亚太地区)

地址： 台湾台北市北投区立德路15号
电话： +886-2-2894-3447
传真： +886-2-2894-7798
电子邮件： info@asus.com.tw
网址： www.asus.com.tw

ASUS COMPUTER INTERNATIONAL (美国)

地址： 800 Corporate Way, Fremont, CA 94539, USA
传真： +1-510-608-4555
网址： usa.asus.com

技术支持

电话： +1-502-995-0883
传真： +1-502-933-8713
在线支持： <http://vip.asus.com/eservice/techserv.aspx>

ASUS COMPUTER GmbH (德国与奥地利)

地址： Harkortstr. 21-23, 40880 Ratingen, Germany
电话： +49-2102-95990
传真： +49-2102-959911
网址： <http://www.asuscom.de>
在线联络： <http://www.asuscom.de/sales>

技术支持

配件： +49-1805-95990
传真： +49-2102-959911
在线支持： <http://vip.asus.com/eservice/techserv.aspx?SLanguage=de-de>
全球服务中心： <http://support.asus.com/service/service.aspx?SLanguage=en-us>
FAQ： <http://support.asus.com/faq/faq.aspx?SLanguage=en-us>
在线技术支持： <http://support.asus.com/techserv/techserv.?SLanguage=en-us>



特色功能

三步简易安装向导

用户可以在三步安装向导的指导下快速安装路由器。

拥有 DHCP 服务器功能

此功能可根据要求为 PC 和其他设备提供动态 IP 地址。此路由器可用作局域网内设备的 DHCP 服务器。

支持 DMZ 主机

网络内的某台 PC 可设置成允许不受限制地与服务器及个人用户进行双向交流。

支持 PPTP 及 PPPoE

WAN 端口连接支持 PPPoE/PPP over Ethernet 与 PPTP (Point-to-Point Tunnel Protocol)，以及“直接连接”服务。

支持 253 个用户，10,000 个会话

RX3081 拥有 8 个 LAN 端口，可支持多达 10,000 个会话。

高级安全管理

RX3081 的网页图形用户界面 (Web GUI) 可让您进行路由器的多项设置，如固件升级、密码验证、端口重定向、IP 过滤与其他安全功能。

MAC 地址克隆

RX3081 可让您克隆电脑的 MAC 地址到您的路由器。



RX3081 宽频路由器快速安装指南

包装内容

- RX3081 路由器 × 1
- AC 电源适配器 × 1
- 快速安装指南 × 1
- 应用程序光盘 × 1（包含用户手册）
- 保修卡 × 1
- RJ45 网线 × 1



以上物品如有任何缺失或损坏，请尽快与您的经销商联系。

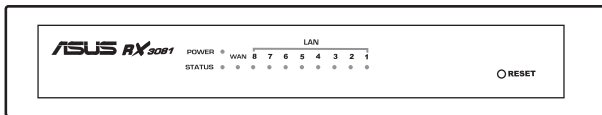




硬件特性

前面板

前面板包含 LED 设备状态指示灯和复位按钮。



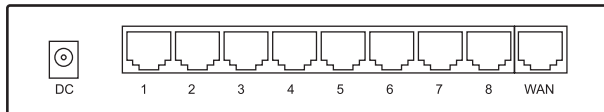
LED	状态	说明
POWER	恒亮	路由器开启。
	熄灭	路由器关闭。
LAN (1-8)	恒亮	连接已建立。
	闪烁	连接已建立，且正在传输数据。
WAN	恒亮	连接已建立。
	闪烁	连接已建立，且正在传输数据。
STATUS	恒亮	设备死机。
	闪烁	设备开启且处于正常状态。

按钮	说明
Reset	短按此按钮可重新启动设备。 连续按住 3 秒可将系统设置恢复到出厂设置。



后面板

后面板包含一个 DC 电源输入端口，一个 RJ-45 WAN 端口，以及八个 RJ-45 LAN 端口。



标示	说明
Power (DC)	连接到电源适配器。
WAN (RJ-45 x 1)	通过 Cable 或 DSL Modem 连接到互联网。
LAN (RJ-45 x 8)	通过以太网集线器、交换机或直接通过电脑连接到局域网 (LAN)。

系统环境要求

在安装 RX3081 路由器之前，请确认您的系统符合以下要求：

- 所有 PC 必须安装 TCP/IP 协议
- 拥有有效的网络登录账号和 DSL 或 Cable Modem
- RJ-45 端口 (10/100Base-T)
- 版本为 5.0 以上的 Microsoft 网络浏览器或版本为 4.7 以上的 Netscape 网络浏览器)



安装路由器

1. 将 RJ-45 网线的一端连接到 DSL/Cable modem 的 RJ-45 端口，网线另一端连接到 RX3081 路由器的 WAN 端口。
2. 用另一条 RJ-45 网线，一端连接到电脑的网络接口，另一端连接到 RX3081 后面板的一个 LAN 端口。重复这一步骤以连接更多设备，最多可连接 8 个设备到 RX3081 路由器。
3. 开启 DSL/ Cable modem 的电源，并确认与 ISP 的连接以建立。然后开启 RX3081 路由器电源。
4. 检查路由器 LED 指示灯的状态。



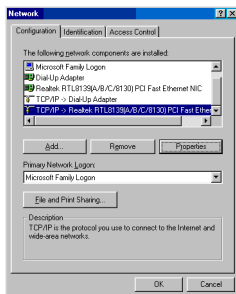
设置局域网内的客户端

RX3081 路由器内建 DHCP 服务器功能，当系统开启时，它将自动分配 IP 地址到网络中的客户端。

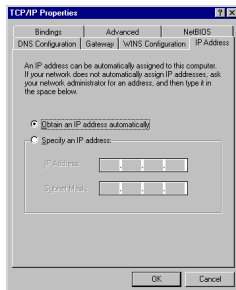
以下是设置您电脑的步骤。请根据您所使用的操作系统选择适当的操作步骤。

Windows® 9x/ME

1. 依次点击【Start】>【Control Panel】>【Network】，此时将会出现 Network 设置窗口。
2. 在 Configuration 标签页中，点击【Properties】。

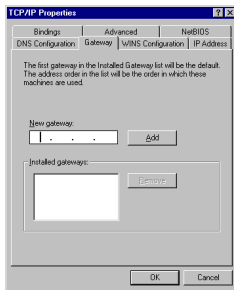


3. 若您想让电脑自动获取 IP 地址，请点选“Obtain an IP address automatically”，然后按下 OK。或者，您也可以点选“Specify an IP address”，手动输入 IP 地址和子网掩码。

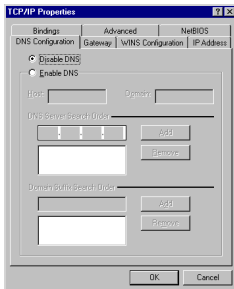




4. 选择【Gateway】标签页，在 New gateway 栏位输入新的网关地址，然后点击 Add。



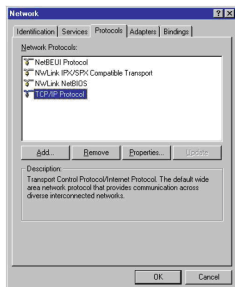
5. 选择【DNS configuration】标签页，并点击“Enable DNS”。输入 Host、Domain 以及 DNS Server Search Order，然后点击 Add。
6. 点击 OK。





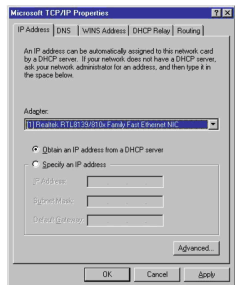
Windows® NT4.0

1. 依次点击【Control Panel】>【Network】，此时将会出现 Network 设置窗口。
选择【Protocols】标签页。
2. 从 Network Protocols 列表中选择“TCP/IP Protocol”，然后点击【Properties】。



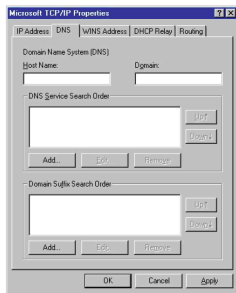
3. 在 Microsoft TCP/IP Properties 窗口的 IP Address 标签页，您可以：

- 在 Adapter 栏位选择您的系统的网络适配卡。
- 若您想要使用路由器分配的 IP 地址，请选择“Obtain an IP address from a DHCP server”。
- 若您想使用特定的 IP 地址，请选择“Specify an IP address”，并在“IP Address”、“Subnet Mask”与“Default Gateway”栏中输入正确的 IP 地址、子网掩码和默认网关。



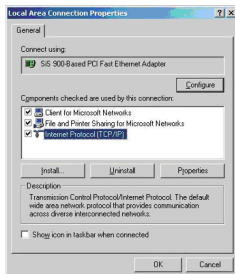


4. 选择 DNS 标签页并点击 DNS Service Search Order 列表下面的【Add】按钮，然后输入 DNS。



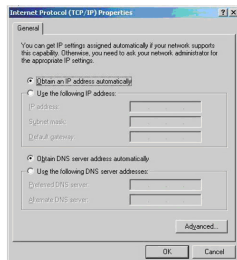
Windows® 2000

1. 依次点击【Start】>【Control Panel】>【Network and Dial-up Connection】。右键点击 Local Area Connection，然后点击【Properties】。
2. 选择“Internet Protocol (TCP/IP)”，然后点击【Properties】。





3. 若您想要使用路由器自动分配的 IP 地址，请选择“Obtain an IP address automatically”。或者，您也可以点选“Use the following IP address”，手动输入 IP 地址、子网掩码和默认网关。
4. 若您想要手动获取 DNS 服务器，请选择“Obtain DNS server address automatically”。或者，您也可以点选“Use the following DNS server address”，手动输入首选与备用 DNS 服务器 IP 地址。
5. 完成后点击【OK】。

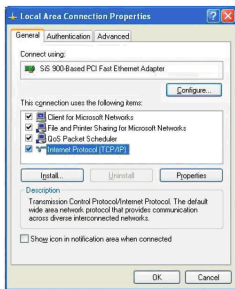


我们建议您将路由器的默认 IP 地址 [192.168.1.1](#) 设置为默认网关地址。

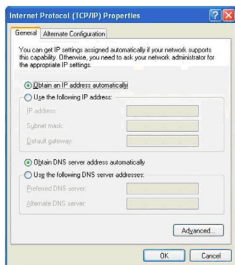


Windows® XP

1. 依次点击【Start】>【Control Panel】>【Network Connection】。右键点击【Local Area Connection】，然后选择【Properties】。



2. 选择“Internet Protocol (TCP/IP)”，然后点击【Properties】。



3. 若您想要使用路由器自动分配的 IP 地址，请选择“Obtain an IP address automatically”。或者，您也可以点选“Use the following IP address”，手动输入 IP 地址、子网掩码和默认网关。
4. 若您想要手动获取 DNS 服务器，请选择“Obtain DNS server address automatically”。或者，您也可以点选“Use the following DNS server address”，手动输入首选与备用 DNS 服务器 IP 地址。
5. 完成后点击【OK】。



我们建议您将路由器的 IP 地址设置为默认网关地址。



RX3081 宽频路由器快速安装指南

设置路由器

RX3081 路由器具备一个网页化设置工具，您可以从网络中的任何电脑上访问这一工具程序。

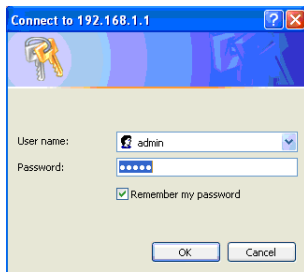


- 建议您使用 Microsoft® Internet Explorer 5.0 或更高版本，或者 Netscape Navigator 4.7或更高版本。
- 在设置路由器之前，请确认您已从 ISP 那里获取了以下信息：
 - 分配给您网络中客户端的 IP 地址类型（静态或动态）
 - 连接服务类型（PPTP 或 PPoE）与所有与连接服务相关的信息（如用户名和密码）。

登录到路由器的网页界面

请按照以下步骤登录路由器：

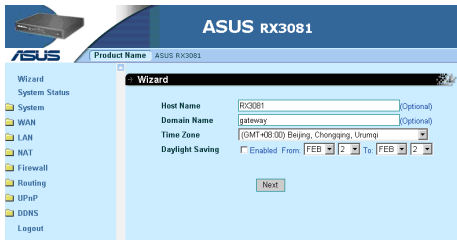
1. 开启网页浏览器，在地址栏内输入 <http://192.168.1.1>（路由器默认 IP 地址）。
2. 在登录窗口输入默认的用户名（admin）和密码（admin），然后点击【OK】。





快速安装

RX3081 路由器可让您快速进行基本设置，如 Host Name、Domain Name、Time Zone，以及 Daylight Saving 等。要进行这些操作，请点击【Wizard】，然后按照提示进行。

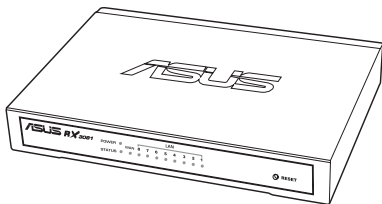




RX3081

寬頻路由器

具備 8 埠交換器功能





華碩的聯絡資訊

華碩電腦公司 ASUSTeK COMPUTER INC. (亞太地區)

地址：台灣臺北市北投區立德路15號
電話：+886-2-2894-3447
傳真：+886-2-2894-7798
電子郵件：info@asus.com.tw
全球資訊網：www.asus.com.tw

ASUS COMPUTER INTERNATIONAL (美國)

地址：800 Corporate Way, Fremont, CA 94539, USA
傳真：+1-510-608-4555
全球資訊網：usa.asus.com

技術支援

電話：+1-502-995-0883
傳真：+1-502-933-8713
線上支援：<http://vip.asus.com/eservice/techserv.aspx>

ASUS COMPUTER GmbH (德國與奧地利)

地址：Harkortstr. 21-23, 40880 Ratingen, Germany
電話：+49-2102-95990
傳真：+49-2102-959911
全球資訊網：<http://www.asuscom.de>
線上聯絡：<http://www.asuscom.de/sales>

技術支援

配件：+49-1805-95990
傳真：+49-2102-959911
線上支援：<http://vip.asus.com/eservice/techserv.aspx?SLanguage=de-de>
全球服務中心：<http://support.asus.com/service/service.aspx?SLanguage=en-us>
FAQ：<http://support.asus.com/faq/faq.aspx?SLanguage=en-us>
在線技術支援：<http://support.asus.com/techserv/techserv?SLanguage=en-us>





特色功能

三步簡易安裝精靈

使用者可以在三步安裝精靈的指導下快速安裝路由器。

擁有 DHCP 伺服器功能

此功能可依據要求為 PC 和其他設備提供動態 IP 位址。此路由器可用作區域網路內設備的 DHCP 伺服器。

支援 DMZ 主機

網路內的某台 PC 可設定成允許不受限制地與伺服器及個人使用者進行雙向交流。

支援 PPTP 及 PPPoE

WAN 連接埠連接支援 PPPoE (PPP over Ethernet) 與 PPTP (Point-to-Point Tunnel Protocol)，以及“直接連線”服務。

支援 253 個使用者，10,000 個會話

RX3081 擁有 8 個 LAN 連接埠，可支援多達 10,000 個會話。

進階安全管理

RX3081 的網頁圖形使用者介面 (Web GUI) 可讓您進行路由器的多項設定，如韌體更新、密碼驗證、連接埠重定向、IP 過濾與其他安全功能。

MAC 位址克隆

RX3081 可讓您克隆電腦的 MAC 位址到您的路由器。



包裝內容

- RX3081 路由器 × 1
- AC 電源變壓器 × 1
- 快速安裝指南 × 1
- 公用程序光碟 × 1 (包含使用手冊)
- 保固卡 × 1
- RJ45 網路線 × 1



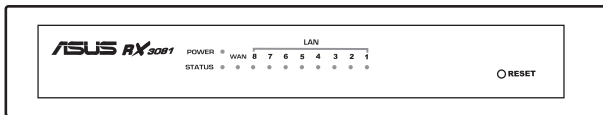
以上物品如有任何缺失或損壞，請儘速與您的經銷商聯絡。



硬體特性

前面板

前面板包含 LED 設備狀態指示燈和重置按鈕。



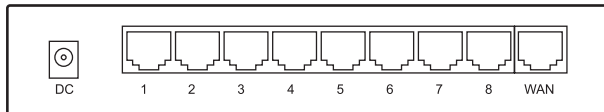
LED	狀態	說明
POWER	恆亮	路由器開啟。
	熄滅	路由器關閉。
LAN (1-8)	恆亮	連接已建立。
	閃爍	連接已建立，且正在傳輸資料。
WAN	恆亮	連接已建立。
	閃爍	連接已建立，且正在傳輸資料。
STATUS	恆亮	設備當機。
	閃爍	設備開啟且處於正常狀態。

按鈕	說明
Reset	短按此按鈕可重新啟動設備。 連續按住 3 秒可將系統設定回復到出廠設定。



后面板

後面板包含一個 DC 電源輸入連接埠，一個 RJ-45 WAN 連接埠，以及八個 RJ-45 LAN 連接埠。



標示	說明
Power (DC)	連接到電源變壓器。
WAN (RJ-45 x 1)	透過 Cable 或 DSL Modem 連接到網際網路。
LAN (RJ-45 x 8)	透過乙太網路集線器、交換器或直接透過電腦連接到區域網路 (LAN)。

系統環境要求

在安裝 RX3081 路由器之前，請確認您的系統符合以下要求：

- 所有 PC 必須安裝 TCP/IP 協定
- 擁有有效的網路登入帳號和 DSL 或 Cable Modem
- RJ-45 連接埠 (10/100Base-T)
- 版本為 5.0 以上的 Microsoft 網路瀏覽器或版本為 4.7 以上的 Netscape 網路瀏覽器)



安裝路由器

1. 將 RJ-45 網路線的一端連接到 DSL/Cable modem 的 RJ-45 連接埠，網路線另一端連接到 RX3081 路由器的 WAN 連接埠。
2. 用另一條 RJ-45 網路線，一端連接到電腦的網路連接埠，另一端連接到 RX3081 後面板的一個 LAN 連接埠。重複這一步驟以連接更多設備，最多可連接 8 個設備到 RX3081 路由器。
3. 開啟 DSL/ Cable modem 的電源，並確認與 ISP 的連接以建立。然後開啟 RX3081 路由器電源。
4. 檢查路由器 LED 指示燈的狀態。



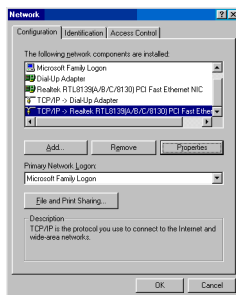
設定區域網路內的用戶端

RX3081 路由器內建 DHCP 伺服器功能，當系統開啟時，它將自動指定 IP 位址到網路中的用戶端。

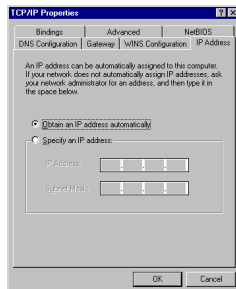
以下是設定您電腦的步驟。請根據您所使用的操作系統選擇適當的操作步驟。

Windows® 9x/ME

1. 依次點選【Start】>【Control Panel】>【Network】，此時將會出現 Network 設定視窗。
2. 在 Configuration 標籤頁中，點選【Properties】。

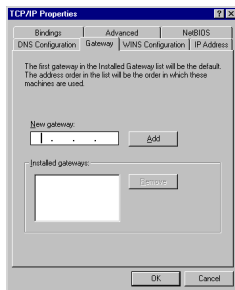


3. 若您想讓電腦自動獲取 IP 位址，請點選“Obtain an IP address automatically”，然後按下 OK。或者，您也可以點選“Specify an IP address”，手動輸入 IP 位址和子網路遮罩。

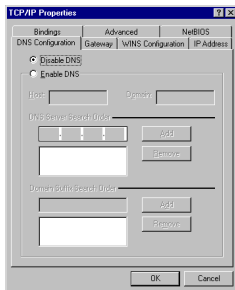




4. 選擇【Gateway】標籤頁，在 New gateway 欄位輸入新的閘道位址，然後點選 Add。



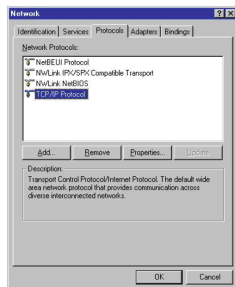
5. 選擇【DNS configuration】標籤頁，並點選“Enable DNS”。輸入 Host、Domain 以及 DNS Server Search Order，然後點選 Add。
6. 點選 OK。





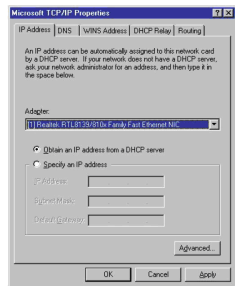
Windows® NT4.0

1. 依次點選【Control Panel】>【Network】，此時將會出現 Network 設定視窗。
選擇【Protocols】標籤頁。
2. 從 Network Protocols 列表中選擇“TCP/IP Protocol”，然後點選【Properties】。



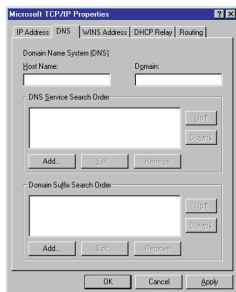
3. 在 Microsoft TCP/IP Properties 視窗的 IP Address 標籤頁，您可以：

- 在 Adapter 欄位選擇您的系統的網路適配卡。
- 若您想要使用路由器指定的 IP 位址，請選擇“Obtain an IP address from a DHCP server”。
- 若您想使用特定的 IP 位址，請選擇“Specify an IP address”，並在“IP Address”、“Subnet Mask”與“Default Gateway”欄中輸入正確的 IP 位址、子網路遮罩和預設閘道。



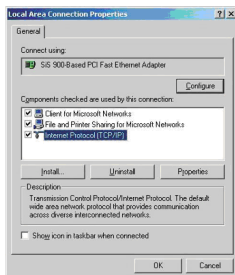


4. 選擇 DNS 標籤頁並點選 DNS Service Search Order 列表下面的【Add】按鈕，然後輸入 DNS。



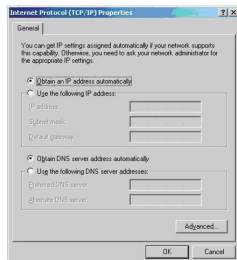
Windows® 2000

1. 依次點選【Start】>【Control Panel】>【Network and Dial-up Connection】。右鍵點選 Local Area Connection，然後點選【Properties】。
2. 選擇“Internet Protocol (TCP/IP)”，然後點選【Properties】。





3. 若您想要使用路由器自動指定的 IP 位址，請選擇“Obtain an IP address automatically”。或者，您也可以點選“Use the following IP address”，手動輸入 IP 位址、子網路遮罩和預設閘道。
4. 若您想要手動獲取 DNS 伺服器，請選擇“Obtain DNS server address automatically”。或者，您也可以點選“Use the following DNS server address”，手動輸入主要與備用 DNS 伺服器 IP 位址。
5. 完成後點選【OK】。

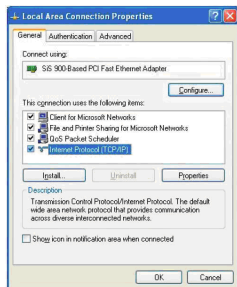


我們建議您將路由器的預設 IP 位址 [192.168.1.1](#) 設定為預設閘道位址。

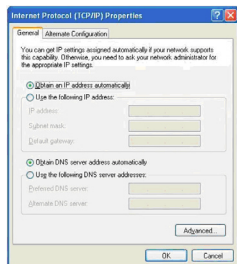


Windows® XP

1. 依次點選【Start】>【Control Panel】>【Network Connection】。右鍵點選【Local Area Connection】，然後選擇【Properties】。



2. 選擇“Internet Protocol (TCP/IP)”，然後點選【Properties】。



3. 若您想要使用路由器自動指定的 IP 位址，請選擇“Obtain an IP address automatically”。或者，您也可以點選“Use the following IP address”，手動輸入 IP 位址、子網路遮罩和預設閘道。
4. 若您想要手動獲取 DNS 伺服器，請選擇“Obtain DNS server address automatically”。或者，您也可以點選“Use the following DNS server address”，手動輸入主要與備用 DNS 伺服器 IP 位址。
5. 完成後點選【OK】。



我們建議您將路由器的 IP 位址設定為預設閘道位址。



設定路由器

RX3081 路由器具備一個網頁化設定工具，您可以從網路中的任何電腦上存取這一工具程式。



- 建議您使用 Microsoft® Internet Explorer 5.0 或更高版本，或者 Netscape Navigator 4.7 或更高版本。
- 在設定路由之前，請確認您已從 ISP 那里獲取了以下資訊：
 - 指定給您網路中用戶端的 IP 位址類型（靜態或動態）
 - 連接服務類型（PPTP 或 PPPoE）與所有與連接服務相關的資訊（如使用者名稱和密碼）。

登入到路由器的网页介面

請按照以下步驟登入路由器：

- 開啟網頁瀏覽器，在地址欄內輸入 <http://192.168.1.1>（路由器預設 IP 位址）。
- 在登入視窗輸入預設的使用者名稱（admin）和密碼（admin），然後點選【OK】。

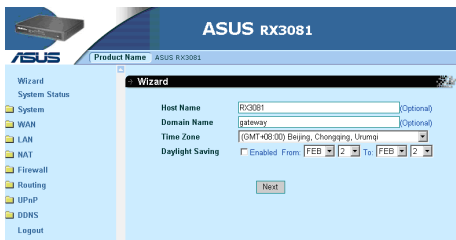




RX3081 寬頻路由器快速安裝指南

快速安裝

RX3081 路由器可讓您快速進行基本設定，如 Host Name，Domain Name，Time Zone，以及 Daylight Saving 等。要進行這些操作，請點選【Wizard】，然後按照提示進行。





RX3081
บรอดแบนด์ เราเตอร์
พร้อม
สวิตช์ 8 พอร์ต

ไทย





ข้อมูลการติดต่อ ASUS

ASUSTeK COMPUTER INC. (ไต้หวัน-แปซิฟิก)

ที่อยู่บริษัท: 15 Li-Te Road, Beitou, Taipei 11259
โทรศัพท์: +886-2-2894-3447
โทรสาร: +886-2-2890-7798
อีเมล: info@asus.com.tw
เว็บไซต์: <http://www.asus.com.tw>

ASUS COMPUTER INTERNATIONAL (อเมริกา)

ที่อยู่บริษัท: 800 Corporate Way, Fremont, CA 94539, USA
ทั่วไป (แฟกซ์): +1-510-608-4555
ที่อยู่เว็บไซต์: <http://usa.asus.com>

ฝ่ายสนับสนุนด้านเทคนิค

การสนับสนุนทั่วไป: +1-502-995-0883
ฝ่ายสนับสนุน (แฟกซ์): +1-502-933-8713
การสนับสนุนออนไลน์: <http://vip.asus.com/eservice/techserv.aspx>

ASUS COMPUTER GmbH (เยอรมนี & ออสเตรีย)

ที่อยู่บริษัท: Harkortstr. 21-23, 40880 Ratingen, Germany
ทั่วไป (โทรศัพท์): +49-2102-95990
ทั่วไป (แฟกซ์): +49-2102-959911
ที่อยู่เว็บไซต์: <http://www.asuscom.de>
การติดต่อออนไลน์: <http://www.asuscom.de/sales>

ฝ่ายสนับสนุนด้านเทคนิค

ชิ้นส่วน: +49-1805-95990
โทรสาร: +49-2102-959911
การสนับสนุนออนไลน์: <http://vip.asus.com/eservice/techserv.aspx?SLanguage=de-de>
ศูนย์บริการทั่วโลก: <http://support.asus.com/service/service.aspx?SLanguage=en-us>
คำถามที่พบบ่อย: <http://support.asus.com/faq/faq.aspx?SLanguage=en-us>
ฝ่ายสนับสนุนด้านเทคนิคออนไลน์: <http://support.asus.com/techserv/techserv.?SLanguage=en-us>





คุณสมบัติเด่น

ตัวช่วยสร้างการตั้งค่าที่ง่าย 3 ขั้นตอน

ช่วยให้คุณสามารถตั้งค่าอุปกรณ์ของคุณอย่างสะดวกในขั้นตอนง่ายๆ 3 ขั้นตอน

DHCP เซิร์ฟเวอร์ในตัว

โปรโตคอลคอนฟิกูเรชันไดนามิก (DHCP) ในตัว ให้ไดนามิก IP โพรตocolแอตเตรส และข้อมูลคอนฟิกูเรชันที่เกี่ยวข้องอื่นๆ เช่น ซับเน็ต มาสก์ และเกตเวย์ เริ่มต้นตามที่มีการร้องขอ เราเตอร์ทำหน้าที่เป็น DHCP เซิร์ฟเวอร์สำหรับอุปกรณ์ต่างๆ (ไคลเอนต์) บน LAN ของคุณ

ฟังก์ชันมัลติ DMZ โพรตocol

คอนฟิกูเรชันพอร์ตหนึ่งของเครื่องในเครือข่ายของคุณ เพื่ออนุญาตให้มีการสื่อสารสองทิศทางที่ไม่ถูกจำกัดกับเซิร์ฟเวอร์ หรือผู้ใช้แต่ละคนบนอินเทอร์เน็ต

สนับสนุน PPTP และ PPPoE

พอร์ต WAN สนับสนุนโปรโตคอลแบบจุด-ต่อ-จุดบนอีเธอร์เน็ต (PPPoE), โปรโตคอลทันเนลแบบจุด-ต่อ-จุด (PPTP) และบริการชนิด "การเชื่อมต่อโดยตรง"

สนับสนุนผู้ใช้สูงถึง 253 คน, เซสชันมากถึง 10,000 รายการ

พร้อมพอร์ต LAN 8 พอร์ต, RX3081 สนับสนุนเซสชันมากถึง 10,000 รายการ

การจัดการด้านความปลอดภัยขั้นสูง

ระบบติดตัวผู้ใช้แบบกราฟิกบนเว็บ (เว็บ GUI) ของ RX3081 ช่วยให้คุณกำหนดค่าต่างๆ ของเราเตอร์ เช่น การอัปเดตเฟิร์มแวร์, การยืนยันตัวบุคคลด้วยรหัสผ่าน, การเปลี่ยนทิศทางพอร์ต, การกรอง IP และคุณสมบัติด้านความปลอดภัยอื่นๆ

การโคลน MAC

RX3081 อนุญาตให้คุณโคลน MAC แอดเดรสของคอมพิวเตอร์ของคุณไปยังเราเตอร์ได้



คู่มือเริ่มต้นฉบับย่อ RX3081 บรอดแบนด์ เราเตอร์

สิ่งต่างๆ ในกล่องบรรจุ

- เราเตอร์ RX3081 x 1
- อะแดปเตอร์พาวเวอร์ AC x 1
- คู่มือเริ่มต้นฉบับย่อ x 1
- แผ่น CD สันนิษฐาน x 1 (คู่มือผู้ใช้อยู่ภายใน)
- ใบรับประกัน x 1
- สายเคเบิล RJ45 x 1



- ติดต่อผู้จำหน่ายถ้ามีการใดเสียหาย หรือหายไป

80



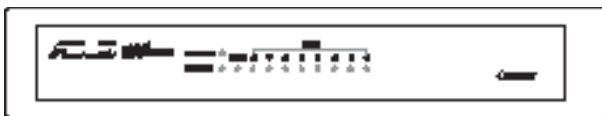
คู่มือเริ่มต้นฉบับย่อ RX3081 บรอดแบนด์ เราเตอร์



คุณสมบัติของฮาร์ดแวร์

แผงด้านหน้า

แผงด้านหน้า ประกอบด้วยไฟแสดงสถานะ LED ที่แสดงถึงสถานะการทำงานของเครื่อง



LED	สถานะ	คำอธิบาย
เพาเวอร์	ติด	เราเตอร์เปิดเครื่องอยู่
	ดับ	เราเตอร์ปิดเครื่อง
LAN (1-8)	ติด	ลิงค์ถูกสร้างขึ้น
	กะพริบ	ลิงค์ถูกสร้างขึ้น และกำลังส่งหรือรับข้อมูลอยู่
WAN	ติด	ลิงค์ถูกสร้างขึ้น
	กะพริบ	ลิงค์ถูกสร้างขึ้น และกำลังส่งหรือรับข้อมูลอยู่
สถานะ	ติด	อุปกรณ์ไม่ตอบสนอง และจำเป็นต้องมีการบำรุงรักษาบางอย่าง
	กะพริบ	อุปกรณ์ใช้งานไม่ได้ และพร้อมทำงาน

ไทย

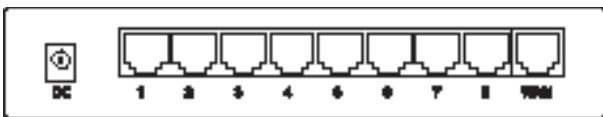


คู่มือเริ่มต้นฉบับย่อ RX3081 บรอดแบนด์ เราเตอร์

ปุ่ม	คำอธิบาย
รีเซ็ต	<ul style="list-style-type: none">การใช้ตัวถูกลายแหลม เช่น ปากกาลูกลื่น กดสั้นๆ เพื่อรีเซ็ตอุปกรณ์ใหม่การใช้ตัวถูกลายแหลม เช่น ปากกาลูกลื่น กดค้างไว้ เพื่อกู้คืนระบบกลับเป็นการตั้งค่าเริ่มต้นจากโรงงาน

แผงด้านหลัง

แผงด้านหลังประกอบด้วยพอร์ตเพาเวอร์ DC, พอร์ต WAN RJ-45 1 พอร์ต และพอร์ต LAN RJ-45 8 พอร์ต



รายการ	คำอธิบาย
เพาเวอร์ (DC)	เชื่อมต่ออะแดปเตอร์เพาเวอร์ DC
WAN (พอร์ต RJ-45 x 1)	เชื่อมต่อไปยังอินเทอร์เน็ตผ่านสายเคเบิล หรือโมเด็ม DSL
LAN (พอร์ต RJ-45 x 8)	เชื่อมต่อไปยังเครือข่ายแลน (LAN) ผ่านอีเธอร์เน็ตฮับ, สวิตช์ หรือต่อเข้ากับคอมพิวเตอร์ของคุณโดยตรง

ความต้องการของระบบ

ก่อนที่จะติดตั้งเราเตอร์ RX3081 ตรวจสอบให้แน่ใจว่าระบบของคุณมีคุณสมบัติตรงตามความต้องการต่อไปนี้:

- คอมพิวเตอร์ที่เปิดทำงานโปรโตคอล TCP/IP
- โมเด็ม DSL หรือเคเบิลโมเด็มสำหรับการเชื่อมต่ออินเทอร์เน็ต
- พอร์ต RJ-45 (10/100Base-T)
- เว็บเบราว์เซอร์





การติดตั้งเราเตอร์

1. เชื่อมต่อปลายด้านหนึ่งของพอร์ต RJ-45 เข้ากับพอร์ต RJ-45 บนโมเด็ม DSL/เคเบิลโมเด็ม จากนั้นเชื่อมต่อปลายอีกด้านหนึ่งเข้ากับพอร์ต WAN ของ RX3081 ของคุณ
2. ใช้สายเคเบิล RJ-45 อีกเส้นหนึ่ง เชื่อมต่อปลายด้านหนึ่งเข้ากับพอร์ตเน็ตเวิร์กของคอมพิวเตอร์ จากนั้นเชื่อมต่อปลายอีกด้านหนึ่งเข้ากับพอร์ต LAN ที่ว่างใน RX3081 ของคุณ ทำขั้นตอนนี้อีกเพื่อเชื่อมต่ออุปกรณ์เพิ่มเติม คุณสามารถเชื่อมต่ออุปกรณ์เข้ากับ RX3081 ของคุณได้มากถึงแปด (8) อย่าง
3. เปิดเครื่องโมเด็ม DSL/เคเบิลโมเด็ม และตรวจสอบให้แน่ใจว่าการเชื่อมโยงกับ ISP ถูกสร้างขึ้นแล้ว จากนั้นเปิดเครื่อง RX3081
4. ตรวจสอบไฟแสดงสถานะ LED เพื่อดูสถานะของเราเตอร์ของคุณ

ไทย



คู่มือเริ่มต้นฉบับย่อ RX3081 บรอดแบนด์ เราเตอร์

การกำหนดค่าไคลเอนต์ใน LAN ของคุณ

RX3081 เราเตอร์ของคุณมาพร้อมกับฟังก์ชัน DHCP เซิร์ฟเวอร์ในตัว ซึ่งใช้เพื่อกำหนด IP แอดเดรส

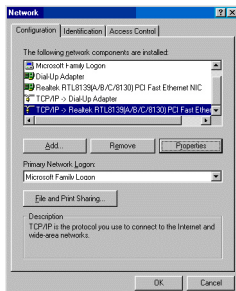
สำหรับไคลเอนต์หรือคอมพิวเตอร์ในเครือข่ายของคุณโดยอัตโนมัติ

ด้านล่างเป็นกระบวนการสำหรับการคอนฟิกคอมพิวเตอร์ของคุณ ปฏิบัติตามขั้นตอนสำหรับระบบปฏิบัติการ

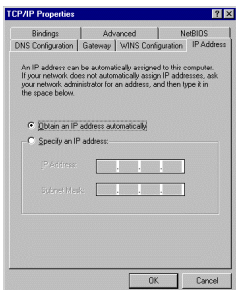
การที่คุณกำลังใช้

Windows® 9x/ME

1. คลิก **Start (เริ่ม) > Control Panel (แผงควบคุม) > Network (เครือข่าย)** เพื่อแสดงหน้าต่าง Network setup (การตั้งค่าเครือข่าย)
2. จากแท็บ Configuration (การกำหนดค่า), คลิก **Properties (คุณสมบัติ)**

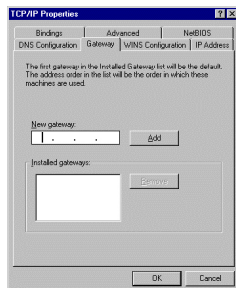


3. ถ้าคุณต้องการให้คอมพิวเตอร์รับ IP แอดเดรสโดยอัตโนมัติ, คลิก **Obtain an IP address automatically (รับ IP แอดเดรสโดยอัตโนมัติ)** จากนั้นคลิก **OK (ตกลง)** ไม่เช่นนั้น คลิก **Specify an IP address (ระบุ IP แอดเดรส)**, จากนั้นพิมพ์ลงในช่อง **IP address (IP แอดเดรส)** และ **Subnet Mask (ซับเน็ตมาสก์)**

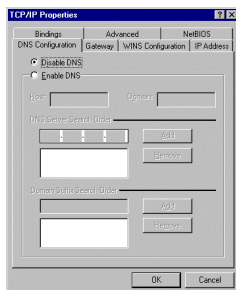




4. เลือกแท็บ **Gateway (เกตเวย์)**, ป้อนค่าใน **New gateway (เกตเวย์ใหม่)** จากนั้นคลิก **Add (เพิ่ม)**



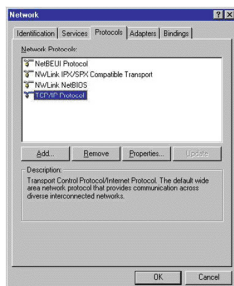
5. เลือกแท็บ **DNS configuration (การกำหนดค่า DNS)** จากนั้นคลิก **Enable DNS (เปิดทำงาน DNS)** ป้อนค่าใน **Host (โฮสต์)**, **Domain (โดเมน)** และ **DNS Server Search Order (ลำดับการค้นหา DNS เซิร์ฟเวอร์)**, จากนั้นคลิก **Add (เพิ่ม)**
6. คลิก **OK (ตกลง)**



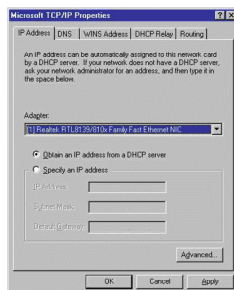


Windows® NT4.0

1. ไปที่ **Control Panel (แผงควบคุม) > Network (เครือข่าย)** เพื่อแสดงหน้าต่าง Network setup (การตั้งค่าเครือข่าย) จากนั้นเลือกแท็บ **Protocols (โปรโตคอล)**
2. เลือก **TCP/IP Protocol (โปรโตคอล TCP/IP)** จากรายการ Network Protocols (โปรโตคอลเครือข่าย) จากนั้นคลิก **Properties (คุณสมบัติ)**

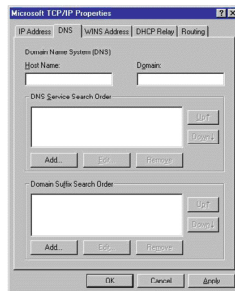


3. จากแท็บ **IP Address (IP แอดเดรส)** ของหน้าต่าง TCP/IP Properties (คุณสมบัติ TCP/IP) ของ Microsoft , คุณสามารถ:
 - เลือกชนิดของอะแดปเตอร์เครือข่ายที่ติดตั้งในระบบของคุณ
 - ตั้งค่าเราเตอร์ให้กำหนด IP แอดเดรสโดยอัตโนมัติ
 - ตั้งค่า IP แอดเดรส, ซับเน็ต มาร์ส, และเกตเวย์
 - เริ่มต้นแบบแมนนวล



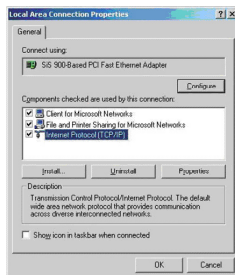


4. เลือกแท็บ DNS (DNS) จากนั้นคลิก **Add (เพิ่ม)** ภายใต้ **DNS Service Search Order** (ลำดับการค้นหาระบบบริการ DNS) และป้อน DNS เข้าไป



Windows® 2000

1. คลิก **Start (เริ่ม) > Control Panel (แผงควบคุม) > Network and Dial-up Connection (เครือข่ายและการเชื่อมต่อแบบโทรเข้า)** คลิกขวาที่ **Local Area Connection (การเชื่อมต่อเครือข่ายท้องถิ่น)** จากนั้นคลิก **Properties (คุณสมบัติ)**
2. เลือก **Internet Protocol (อินเทอร์เน็ตโปรโตคอล)(TCP/IP)**, จากนั้นคลิก **Properties (คุณสมบัติ)**

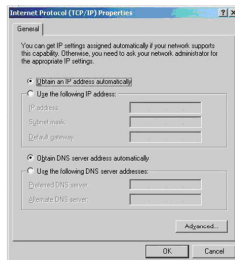




คู่มือเริ่มต้นฉบับย่อ RX3081 บรอดแบนด์ เราเตอร์

3. เลือก **Obtain an IP address automatically** (รับ IP

แอดเดรสโดยอัตโนมัติ) หากคุณต้องการ
ในการตั้งค่า IP ถูกกำหนดโดยอัตโนมัติ
ไม่เช่นนั้น เลือก **Use the following
IP address** (ใช้ที่อยู่ IP ต่อไปนี้):
และป้อนค่าในช่อง **IP address** (IP
แอดเดรส), **Subnet mask** (ซับเน็ต
มาสก์) และ **Default gateway**
(เกตเวย์เริ่มต้น)



4. เลือก **Obtain DNS server address
automatically** (รับ DNS เซิร์ฟเวอร์แอด
เดรสโดยอัตโนมัติ) หากคุณต้องการให้การ
ตั้งค่า DNS เซิร์ฟเวอร์ถูกกำหนดโดยอัตโนมัติ ไม่เช่นนั้น เลือก **Use
the following DNS server address** (ใช้ DNS เซิร์ฟเวอร์แอดเดรสต่อ
ต่อไปนี้) และป้อนค่าในช่อง **Preferred** (ที่เลือกใช้) และ **Alternate DNS server**
(DNS เซิร์ฟเวอร์อื่น)

5. คลิก **OK** (ตกลง) เมื่อทำเสร็จ

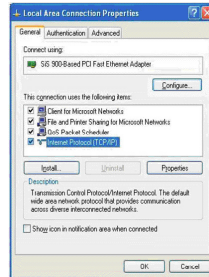


- เราแนะนำให้คุณตั้งค่า IP แอดเดรสของเราเตอร์เป็น <http://192.168.1.1> (ค่า IP
แอดเดรส
เริ่มต้นของเราเตอร์) เป็นเกตเวย์เริ่มต้น

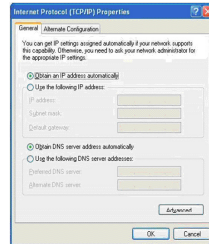


Windows® XP

1. คลิก **Start (เริ่ม)**, เลือก **Control Panel (แผงควบคุม)** > **Network Connection (การเชื่อมต่อเครือข่าย)** คลิกขวาที่ **Local Area Connection (การเชื่อมต่อเครือข่ายท้องถิ่น)** จากนั้นเลือก **Properties (คุณสมบัติ)**



2. เลือก **Internet Protocol (อินเทอร์เน็ตโปรโตคอล)(TCP/IP)**, จากนั้นคลิก **Properties (คุณสมบัติ)**



3. เลือก **Obtain an IP address automatically (รับ IP แอดเดรสโดยอัตโนมัติ)** หากคุณต้องการให้การตั้งค่า IP ถูกกำหนดโดยอัตโนมัติ ไม่เช่นนั้น เลือก **Use the following IP address (ใช้ IP แอดเดรสต่อไปนี้)**: และป้อนค่าในช่อง **IP address (IP แอดเดรส)**, **Subnet mask (ซับเน็ตมาสก์)** และ **Default gateway (เกตเวย์เริ่มต้น)**
4. เลือก **Obtain DNS server address automatically (รับ DNS เซิร์ฟเวอร์แอดเดรสโดยอัตโนมัติ)** หากคุณต้องการให้การตั้งค่า DNS เซิร์ฟเวอร์ถูกกำหนดโดยอัตโนมัติ ไม่เช่นนั้น เลือก **Use the following DNS server address (ใช้ DNS เซิร์ฟเวอร์แอดเดรสต่อไปนี้)**: และป้อนค่าในช่อง **Preferred and Alternate DNS server (DNS เซิร์ฟเวอร์ที่เลือกใช้และค่าอื่น)**
5. คลิก **OK (ตกลง)** เมื่อทำเสร็จ



- เราแนะนำให้คุณตั้งค่า IP แอดเดรสของเราเตอร์เป็นเกตเวย์เริ่มต้น



คู่มือเริ่มต้นฉบับย่อ RX3081 บรอดแบนด์ เราเตอร์

การกำหนดค่าเราเตอร์

RX3081 เราเตอร์มาพร้อมกับยูทิลิตี้ในการตั้งค่าคอนฟิกเราเตอร์แบบเว็บ เรียกใช้ยูทิลิตี้นี้จากพีซีแลนที่เครื่องใดก็ได้ในเครือข่าย



- เราแนะนำให้ผู้ใช้ Microsoft Internet Explorer 5.0 หรือใหม่กว่า หรือ Netscape Navigator 4.7 หรือใหม่กว่า
- ก่อนที่จะกำหนดค่าเราเตอร์ของคุณ ให้แน่ใจว่าคุณได้รับข้อมูลต่อไปนี้จากผู้ให้บริการอินเทอร์เน็ต (ISP) ของคุณ:
 - ชนิดของ IP แอดเดรส (สแตติก หรือไดนามิก) ที่กำหนดให้กับพีซีแลนบน LAN ของคุณ
 - ชนิดของบริการการเชื่อมต่อ (PPTP หรือ PPoE) และข้อมูลที่เกี่ยวข้องทั้งหมดเกี่ยวกับบริการการเชื่อมต่อ (เช่น ชื่อผู้ใช้ และรหัสผ่าน)

การล็อกอินเข้ามายังระบบติดต่อผู้ใช้งานเว็บของเราเตอร์

ในการล็อกอินเข้ามายังเราเตอร์ของคุณ:

- เปิดเว็บเบราว์เซอร์ จากนั้นป้อน <http://192.168.1.1> (IP แอดเดรสของเราเตอร์) ในกล่องที่อยู่ของเว็บเบราว์เซอร์ และกด Enter
- จากหน้าต่าง login (เข้าระบบ), ป้อนชื่อผู้ใช้เริ่มต้น (admin) และรหัสผ่าน (admin), จากนั้นคลิก OK (ตกลง)



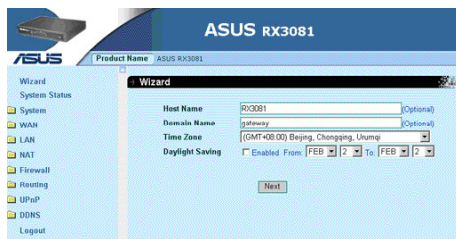


คู่มือเริ่มต้นฉบับย่อ RX3081 บรอดแบนด์ เราเตอร์



การตั้งค่าด่วน

RX3081 เราเตอร์ เปิดโอกาสให้คุณสามารถตั้งค่าพื้นฐานของเราเตอร์ เช่น ชื่อโฮสต์, ชื่อโดเมน, เขตเวลา และการชดเชยเวลาได้อย่างรวดเร็ว ในการดำเนินการ, คลิก **Wizard** (ตัวช่วยสร้าง), จากนั้นทำตามขั้นตอนที่แสดงขึ้นมา

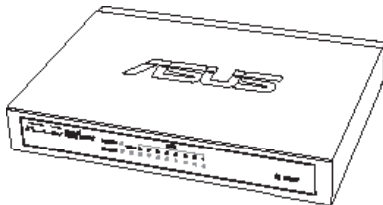


ไทย



ASUS®

RX3081
GENİŞ BANT YÖNLENDİRİCİ
ve
8 Portlu Anahtar



Türkçe





ASUS İletişim Bilgileri

ASUSTek COMPUTER INC. (Asya Pasifik)

Şirket adresi: 15 Li-Te Road, Beitou, Taipei 11259
Telefon: +886-2-2894-3447
Faks: +886-2-2890-7798
E-posta: info@asus.com.tw
Web sitesi: http://www.asus.com.tw

ASUS COMPUTER INTERNATIONAL (Amerika)

Şirket adresi: 800 Corporate Way, Fremont, CA 94539, USA
Genel (faks): +1-510-608-4555
Web sitesi adresi: http://usa.asus.com

Teknik destek

Genel destek: +1-502-995-0883
Destek (faks): +1-502-933-8713
Çevrimiçi destek: http://vip.asus.com/eservice/techserv.aspx

ASUS COMPUTER GmbH (Almanya ve Avusturya)

Şirket adresi: Harkortstr. 21-23, 40880 Ratingen, Germany
Genel (tel): +49-2102-95990
Genel (faks): +49-2102-959911
Web sitesi adresi: http://www.asuscom.de
Çevrimiçi destek: http://www.asuscom.de/sales

Teknik destek

Bileşenler: +49-1805-95990
Faks: +49-2102-959911
Çevrimiçi destek: http://vip.asus.com/eservice/techserv.aspx?SLanguage=de-de
Global servis merkezi: http://support.asus.com/service/service.aspx?SLanguage=en-us
SSS: http://support.asus.com/faq/faq.aspx?SLanguage=en-us
Çevrimiçi teknik destek: http://support.asus.com/techserv/techserv.?SLanguage=en-us

Türkçe





RX3081 Geniş Bant Yönlendirici Hızlı Başlangıç Kılavuzu

Başlıca özellikler

3 Adımda Kolay Kurulum sihirbazı

Üç kolay adımda aygıtınızı kolaylıkla kurmanızı sağlar.

Yerleşik DHCP sunucusu

Yerleşik Dinamik Ana Bilgisayar Yapılandırma Protokolü (DHCP), istek üzerine dinamik bir IP ana bilgisayar adresi ve alt ağ maskesi ve varsayılan ağ geçidi gibi diğer ilgili yapılandırma bilgilerini sağlar. Yönlendirici, LAN'ınızdaki aygıtlar (istemciler) için DHCP sunucusu görevi görür.

Multi DMZ Ana Bilgisayar Fonksiyonu

Ağınızdaki bir bilgisayarı Internet'teki tek tek kullanıcılarla veya sunucularla sınırsız yönlü iletişim için yapılandırın.

PPTP ve PPPoE'yi destekler

WAN portu, Ethernet üzerinden Noktadan Noktaya Protokolü (PPPoE), Noktadan Noktaya Tünel Protokolü (PPTP) ve "Doğrudan Bağlantı" türü servisleri destekler.

253 kullanıcı, 10.000 oturuma kadar destek

RX3081, sekiz LAN portuyla 10.000 oturuma kadar destek sunar.

Gelişmiş Güvenlik Yönetimi

RX3081'in web grafik kullanıcı arayüzü (web GUI donanım yazılımı yükseltmesi, parola yetkilendirme, port yönlendirme, IP filtreleme ve diğer güvenlik özellikleri gibi router ayarlarını konfigüre etmenizi sağlar.

MAC Kopyalama

RX3081, bilgisayarınızın MAC adresini routerinize kopyalamanıza izin verir.



Paket içeriği

- RX3081 yönlendirici x 1
- AC güç adaptörü x 1
- Hızlı Başlangıç Kılavuzu x 1
- Destek CD'si x 1 (Kullanım kılavuzu dahildir)
- 1 adet garanti kartı
- 1 adet RJ45 kablosu



- Bu parçalardan herhangi biri hasarlı veya eksikse satıcınıza başvurun.

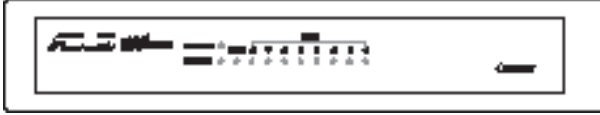


RX3081 Geniş Bant Yönlendirici Hızlı Başlangıç Kılavuzu

Donanım özellikleri

Ön panel

Ön panel, ünitenin durumunu gösteren LED göstergeleri içerir.



LED	Durum	Açıklama
POWER (GÜÇ)	Açık	Yönlendirici AÇIK.
	Kapalı	Yönlendirici KAPALI.
LAN (1-8)	Açık	Bağlantı kuruldu.
	Yanıp Sönen	Bağlantı kuruldu ve veri gönderiliyor veya alınıyor.
WAN	Açık	Bağlantı kuruldu.
	Yanıp Sönen	Bağlantı kuruldu ve veri gönderiliyor veya alınıyor.
STATUS (DURUM)	Açık	Aygıt yanıt vermiyor ve bakım gerekiyor.
	Yanıp Sönen	Aygıt açık ve hazır.

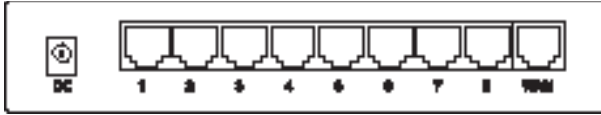




Düğme	Açıklama
Reset (Sıfırla)	<ul style="list-style-type: none">Aygıtı yeniden başlatmak için tükenmez kalem gibi sivri uçlu bir nesne kullanarak kısa bir süre basın.Sistemi fabrika varsayılan ayarlarına döndürmek için tükenmez kalem gibi sivri uçlu bir nesne kullanarak uzun süre basın.

Arka panel

Arka panelde DC güç portu, bir RJ-45 WAN portu ve sekiz RJ-45 LAN portu bulunur.



Öge	Açıklama
Güç (DC)	DC güç adaptörüne bağlanır.
WAN (RJ-45 portu x 1)	Kablo veya DSL modemle Internet'e bağlanır.
LAN (RJ-45 portu x 8)	Ethernet hub veya anahtar üzerinden Yerel Ağa (LAN) veya doğrudan bilgisayarınıza bağlanır.

Sistem gereksinimleri

RX3081 yönlendiricisini kurmadan önce, sisteminizin aşağıdaki gereksinimleri karşıladığından emin olun:

- TCP/IP protokolleri etkinleştirilmiş bilgisayarlar
- Internet bağlantısı için DSL veya kablo modem
- RJ-45 portu (10/100Base-T)
- Web tarayıcısı



RX3081 Geniř Bant Yönlendirici Hızlı Bařlangıç Kılavuzu

Yönlendiricinin kurulması

1. RJ-45 kablusunun bir ucunu DSL/kablo modeminizin RJ-45 portuna baęlayın, sonra dięer ucunu RX3081'inizin WAN portuna baęlayın.
2. Bařka bir RJ-45 kablusunun bir ucunu bilgisayarınızın aę portuna baęlayın, sonra dięer ucunu RX3081'de kullanılabilir bir LAN portuna baęlayın. Daha fazla aygıt baęlamak için bu adımı tekrarlayın; RX3081'inize en fazla sekiz (8) aygıt baęlayabilirsiniz.
3. DSL/Kablo modeminizi açın ve ISS'yle baęlantı kurulduęundan emin olun, sonra RX3081'i açın.
4. Yönlendiricinizin durumunu görmek için LED göstergelerini kontrol edin.



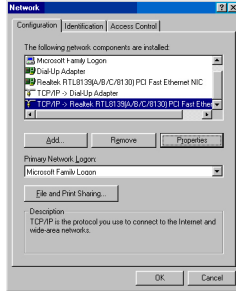
LAN'ınızdaki istemcileri yapılandırma

RX3081 yönlendiriciniz, ağındaki istemcilere veya bilgisayarlara otomatik olarak IP adresi atamak için kullanılan yerleşik DHCP sunucusu işlevleriyle gelir.

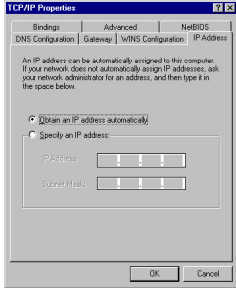
Aşağıda bilgisayarınızı yapılandırmak için kullanılacak prosedürler bulunmaktadır. Kullandığınız işletim sistemiyle ilgili yönergeleri izleyin.

Windows® 9x/ME

1. Ağ kurulumu penceresini görüntülemek için **Start (Başlat) > Control Panel (Denetim Masası) > Network (Ağ)** seçeneklerini tıklayın.
2. Yapılandırma sekmesinde, **Properties (Özellikler)**'i tıklayın.



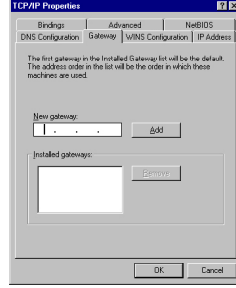
3. Bilgisayarınızın otomatik olarak IP adresi almasını istiyorsanız, **Obtain an IP address automatically (Otomatik olarak bir IP adresi al)** seçeneğini, sonra **OK (Tamam)**'i tıklayın. İstemiyorsanız, **Specify an IP address (Bir IP adresi belirt)**'i tıklayın, sonra **IP address (IP adresi)** ve **Subnet Mask (Alt Ağ Maskesi)** bilgilerini girin.



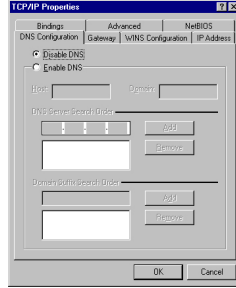


RX3081 Geniş Bant Yönlendirici Hızlı Başlangıç Kılavuzu

4. Gateway (Ağ Geçidi) sekmesini seçin ve **New gateway (Yeni ağ geçidi)**'ni girin, sonra **Add (Ekle)**'yi tıklayın.



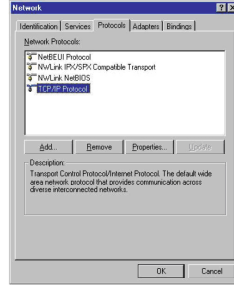
5. DNS configuration (DNS yapılandırması) sekmesini seçin, sonra **Enable DNS (DNS Etkinleştir)**'i tıklayın. **Host, Domain (Ana Bilgisayar, Etki Alanı)** ve **DNS Server Search Order (DNS Sunucusu Arama Sırası)** bilgilerini girin, sonra **Add (Ekle)**'yi tıklayın.
6. **OK (Tamam)**'i tıklayın.



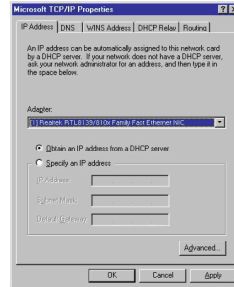


Windows® NT4.0

1. Ağ kurulumu penceresini görüntülemek için **Control Panel (Denetim Masası) > Network (Ağ)** seçeneğine gidin, sonra **Protocols (Protokoller)** sekmesini seçin.
2. Ağ Protokolleri listesinden **TCP/IP Protocol (TCP/IP Protokolü)**'nü seçin, sonra **Properties (Özellikler)**'i tıklayın.



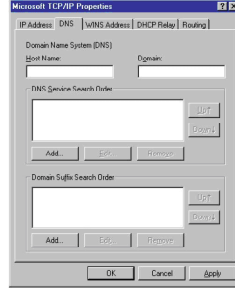
3. Microsoft TCP/IP Özellikleri penceresinin IP Adresi sekmesinde aşağıdakileri yapabilirsiniz:
 - Sisteminizde yüklü ağ adaptörünün türünü seçme.
 - IP adresini otomatik olarak atayacak şekilde yönlendiriciyi ayarlama.
 - IP adresini, alt ağ maskesini ve varsayılan ağ geçidini el ile ayarlama.





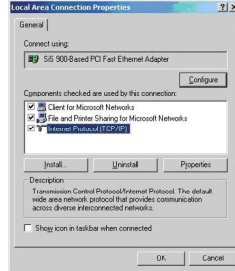
RX3081 Geniş Bant Yönlendirici Hızlı Başlangıç Kılavuzu

4. DNS sekmesini seçin, sonra **DNS Service Search Order (DNS Hizmeti Arama Sırası)** altında **Add (Ekle)**'yi tıklayın ve DNS'yi girin.

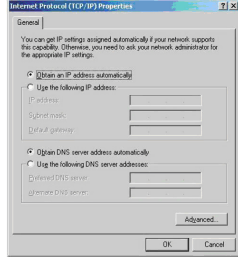


Windows® 2000

1. **Start (Başlat) > Control Panel (Denetim Masası) > Network and Dial-up Connection (Ağ ve Çevirmeli Bağlantılar)** seçeneklerini tıklayın. **Local Area Connection (Yerel Ağ Bağlantısı)**'ni sağ tıklayın, sonra **Properties (Özellikler)**'i tıklayın.
2. **Internet Protocol (Internet Protokolü) (TCP/IP)** öğesini seçin, sonra **Properties (Özellikler)**'i tıklayın.



3. IP ayarlarının otomatik olarak atanmasını istiyorsanız, **Obtain an IP address automatically** (Otomatik olarak bir IP adresi al)ı seçin. İstemiyorsanız, **Use the following IP address (Aşağıdaki IP adresini kullan)**: seçeneğini seçin ve **IP address**, **Subnet mask (IP adresi, Alt ağ maskesi)** ve **Default gateway (Varsayılan ağ geçidi)** bilgilerini girin.
4. DNS sunucusu ayarlarının otomatik olarak atanmasını istiyorsanız, **Obtain DNS server address automatically (DNS sunucu adresini otomatik olarak al)**ı seçin. İstemiyorsanız, **Use the following DNS server address (Aşağıdaki DNS sunucu adresini kullan)**: ı seçin ve **Preferred (Tercih edilen)** ve **Alternate DNS server (Diğer DNS sunucusu)** bilgilerini girin.
5. Bittiğinde **OK (Tamam)**'ı tıklayın.

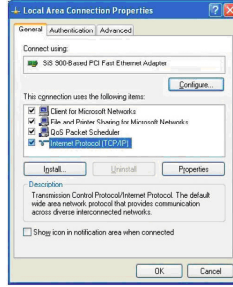


- Yönlendiricinin IP adresini <http://192.168.1.1> (yönlendiricinin varsayılan IP adresi) varsayılan ağ geçidi olarak ayarlamanızı öneririz.

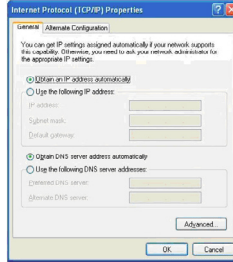


Windows® XP

1. **Start (Bařlatı)**'ı tıklatın, **Control Panel (Denetim Masası) > Network Connection (Ağ Baęlantısı)** seçeneklerini seçin. **Area Connection (Yerel Ağ Baęlantısı)**'nı saę tıklatın, sonra **Properties (Özellikler)**'i seçin.



2. **Internet Protocol (Internet Protokolü) (TCP/IP)** seçeneęini seçin, sonra **Properties (Özellikler)**'i tıklatın.



3. IP ayarlarının otomatik olarak atanmasını istiyorsanız, **Obtain an IP address automatically (Otomatik olarak bir IP adresi alı)**'ı seçin. İstemiyorsanız, **Use the following IP address (řaęıdaki IP adresini kullan)**: seçeneęini seçin ve **IP address**, **Subnet mask (IP adresi, Alt ağ maskesi)** ve **Default gateway (Varsayılan ağ geçidi)** bilgilerini girin.
4. DNS sunucusu ayarlarının otomatik olarak atanmasını istiyorsanız, **Obtain DNS server address automatically (DNS sunucu adresini otomatik olarak alı)**'ı seçin. İstemiyorsanız, **Ařaęıdaki DNS sunucu adresini kullan:** 'ı seçin ve **Preferred (Tercih edilen)** ve **Alternate DNS server (Dięer DNS sunucusu)** bilgilerini girin.
5. Bittięinde **OK (Tamam)**'ı tıklatın.



• Yönlendiricinin IP adresini varsayılan ağ geçidi olarak ayarlamanızı öneririz.



Yönlendiricinin yapılandırılması

RX3081 Yönlendirici web tabanlı bir yapılandırma yardımcı programıyla gelir. Ağıdaki herhangi bir istemciden bu yardımcı programa erişin.



- Microsoft® Internet Explorer 5.0 veya üstünü ya da Netscape Navigator 4.7 veya üstünü kullanmanızı öneririz.
- Yönlendiricinin yapılandırmadan önce, Internet Servis Sağlayıcı'nızdan (ISS) aşağıdaki bilgileri aldığınızdan emin olun:
 - LAN'ınızdaki istemcilere atanan IP adresi (statik veya dinamik) türü.
 - Bağlantı hizmetinin türü (PPTP veya PPoE) ve bağlantı hizmetiyle ilgili tüm bilgiler (kullanıcı adı ve parola gibi).

Yönlendiricinin web arayüzünde oturum açma

Yönlendiricinizde oturum açmak için:

1. Web tarayıcısını başlatın, sonra web tarayıcısının adres kutusuna <http://192.168.1.1> (yönlendiricinin varsayılan IP adresi) girin ve Enter'a basın.
2. Oturum açma penceresinden, varsayılan kullanıcı adını (admin) ve şifresini (admin) girin, sonra **OK** (**Tamam**)'ı tıklayın.

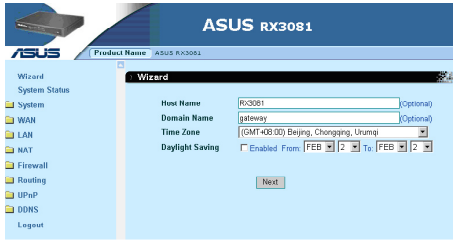




RX3081 Geniş Bant Yönlendirici Hızlı Başlangıç Kılavuzu

Hızlı Kurulum

RX3081 Yönlendirici, yönlendiricinin ana bilgisayar adı, etki alanı adı, saat dilimi ve yaz saati gibi temel ayarlarını hızlıca ayarlamayı sağlar. Bunu yapmak için, **Wizard'ı (Sihirbaz)** tıklattın, sonra yönergeleri izleyin.



Türkçe