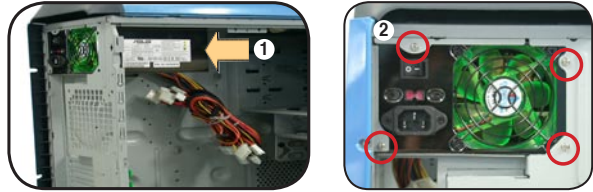


VENTO 3600

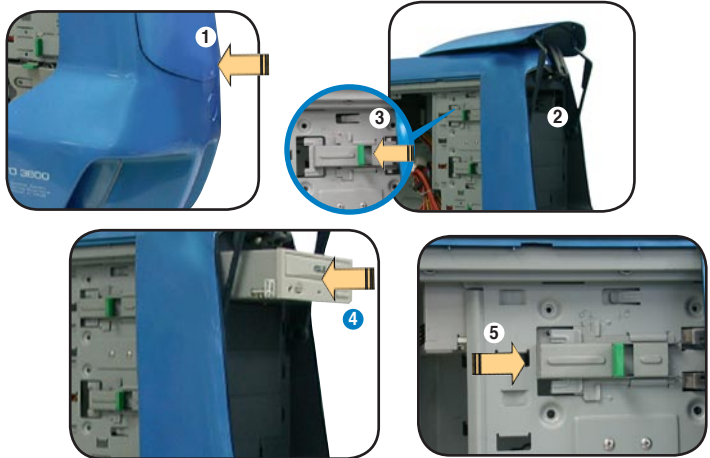
A Removing the side cover



B Installing the power supply unit (PSU)


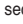


C Installing an optical disk drive (ODD)

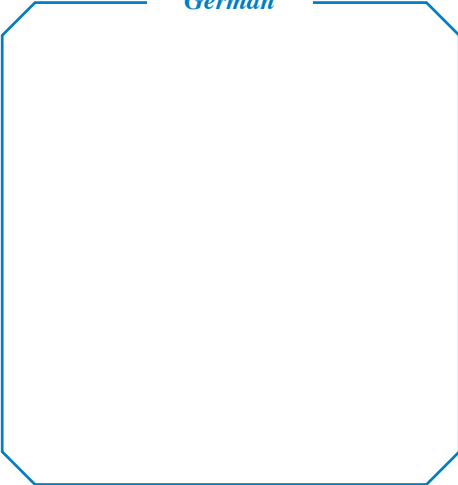


Continued at the back ➡

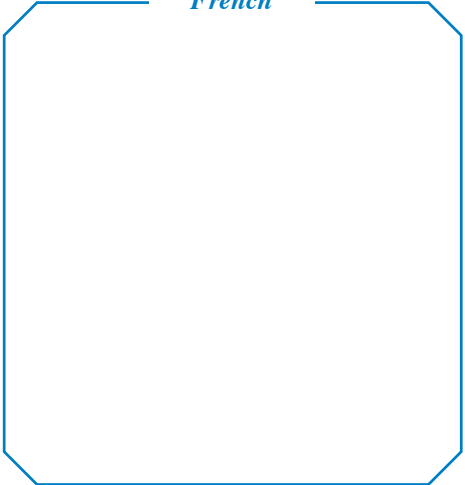
English

- A**
1. Push down to release the top tabs of the cable management kit, then pull up the cable management kit to release it from the bottom tabs.
 2. Remove three screws on the rear panel.
 3. Turn the swivel 45° clockwise to release the side cover.
 4. Push the side cover to the direction of the rear panel.
 5. Tilt the side cover and slide it out of the chassis.
- B**
1. Slide the PSU into the slot until it snugly fits the metal rail.
 2. Secure with screws.
 3. Set the voltage selector according to the voltage in your area.
- C**
1. Push the marked portion of the Magic Mask® to open.
 2. Remove the drive bay cover.
 3. Slide the bay lock toward the  sign.
 4. Insert the ODD into the bay.
 5. Align the ODD holes with the bay holes, then slide the bay lock toward the  sign to secure the drive in place.
 6. Connect cables.

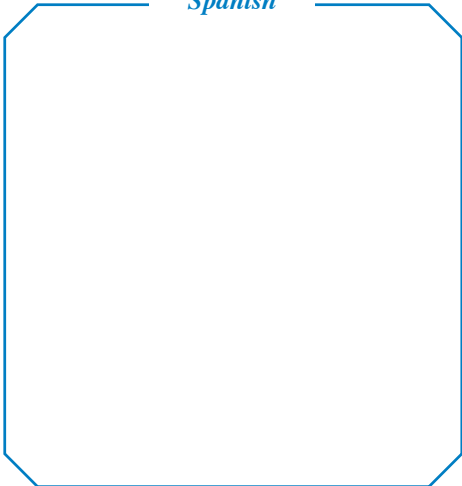
German



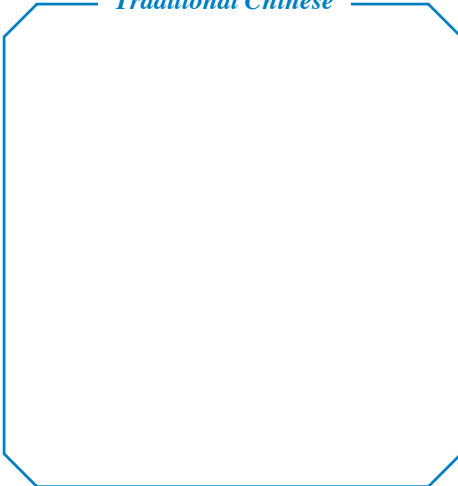
French



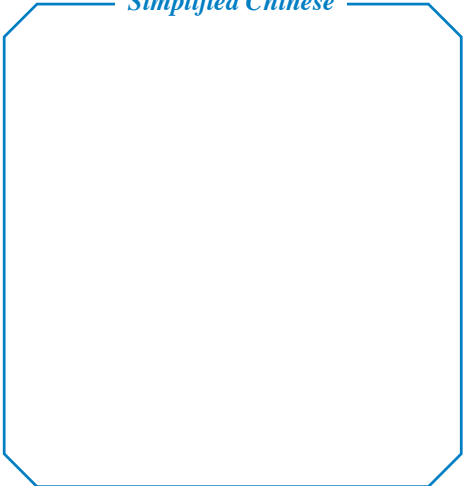
Spanish



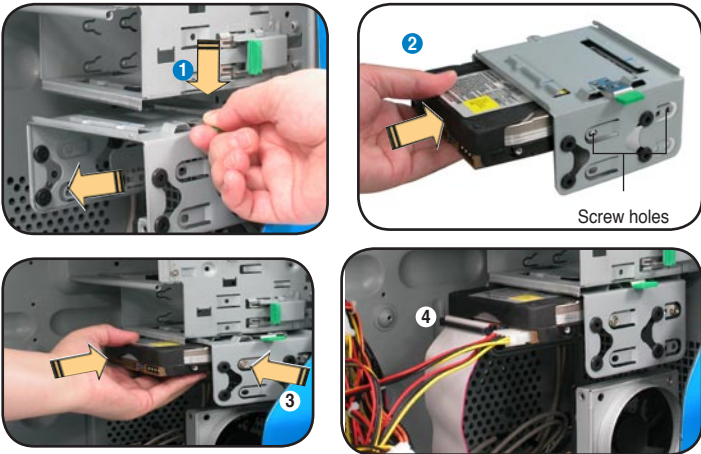
Traditional Chinese



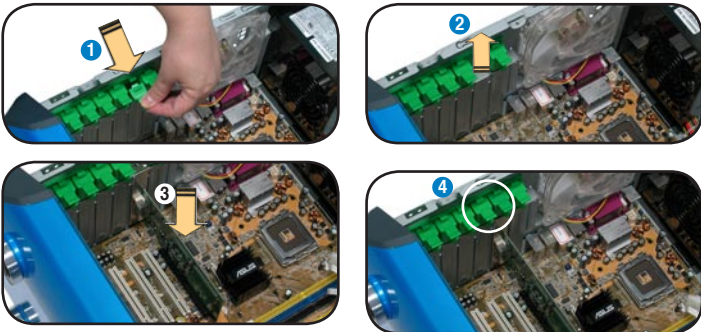
Simplified Chinese



D Installing a hard disk drive (HDD)



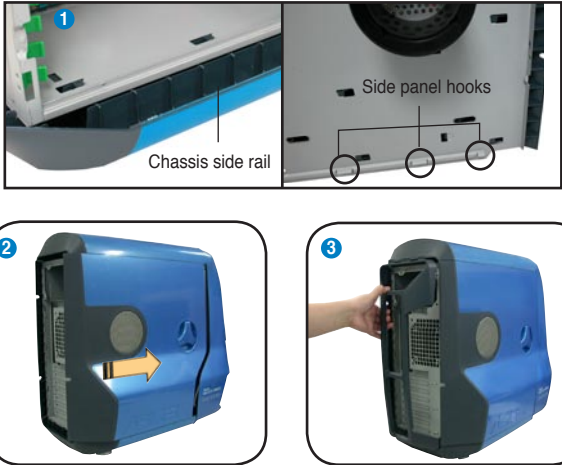
E Installing an expansion card




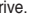
F Installing a floppy disk drive (FDD)



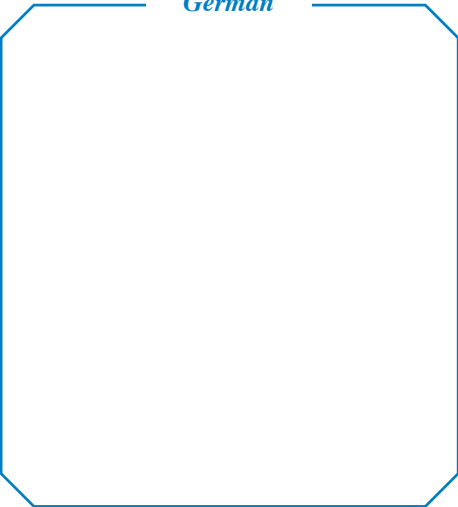
G Reinstalling the side cover



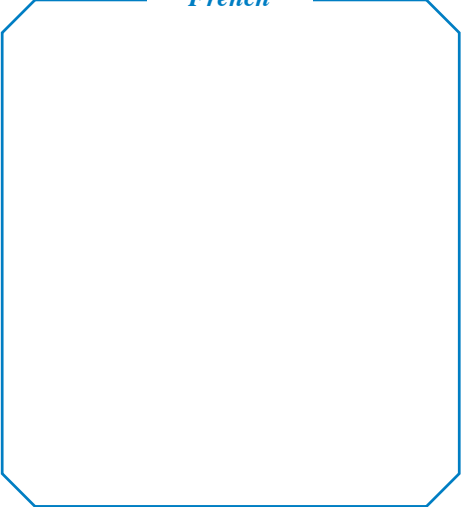
English

- D**
1. Press down the HDD cage lock, then pull the cage out of the chassis.
 2. Insert the HDD into the upper bay of the cage. Secure with screws.
 3. Reinstall the HDD cage to the chassis.
 4. Connect cables.
- E**
1. Push out the green lock tab.
 2. Remove the metal cover opposite the slot you want to use.
 3. Install the card.
 4. Secure the card with the lock tab you removed earlier.
- F**
1. Remove the drive bay cover and the knock-down metal cover, then slide the bay lock toward the  sign.
 2. Insert the FDD into the bay.
 3. Align the FDD holes with the bay holes, then slide the bay lock toward the  sign to secure the drive.
 4. Connect cables.
- G**
1. Match the side cover hooks to the chassis rail edge, then fit the side cover to the chassis.
 2. Slide the cover toward the front.
 3. Replace the cable management kit.

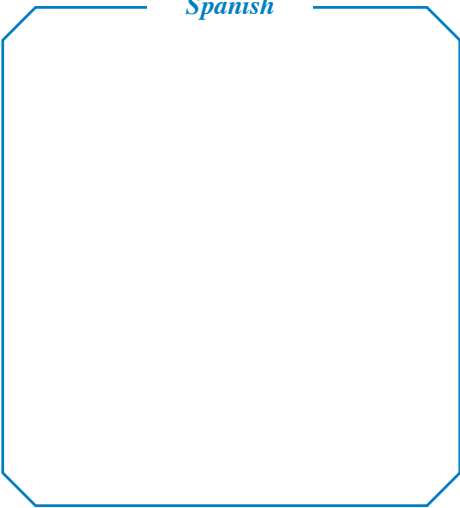
German



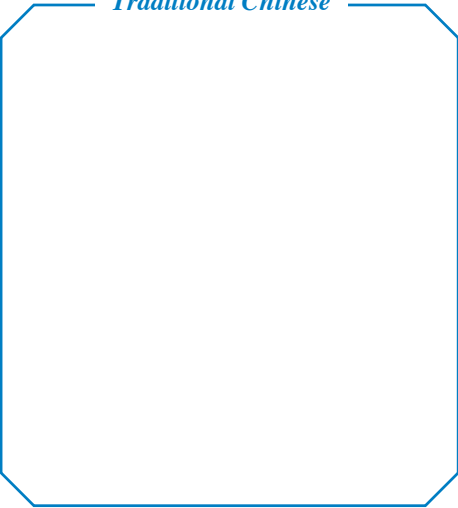
French



Spanish



Traditional Chinese



Simplified Chinese

