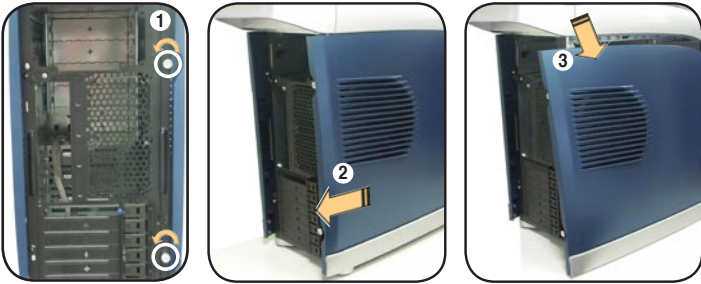
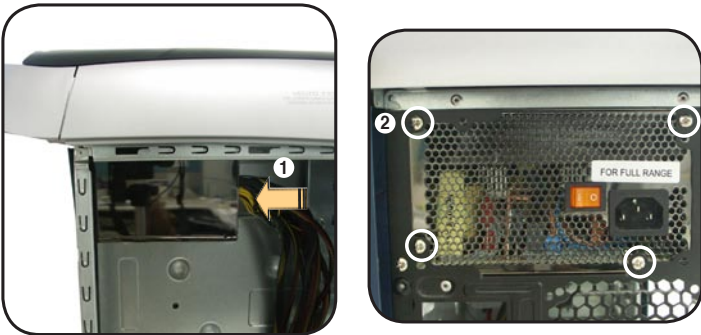


VENTO 7700

A Removing the side cover



B Installing the power supply unit (PSU)



C Installing an optical disk drive (ODD)



Continued at the back 

English

- A**
1. Turn two rear panel thumbscrews counterclockwise.
 2. Push the side cover to the direction of the rear panel.
 3. Tilt the side cover and slide it out of the chassis.
- B**
1. Slide the PSU into the slot until it snugly fits the metal rail.
 2. Secure with screws.
 3. Set the voltage selector according to the voltage in your area.
- C**
1. Push the marked portion of the Magic Mask® to open.
 2. Remove the drive bay cover.
 3. Lift the drive bay lock.
 4. Insert the ODD into the bay.
 5. Align the ODD holes with the bay holes, then press down the drive bay lock to secure the drive in place.
 6. Connect cables.

German

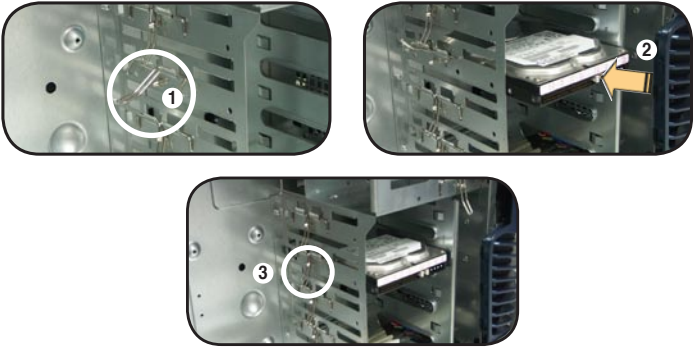
French

Spanish

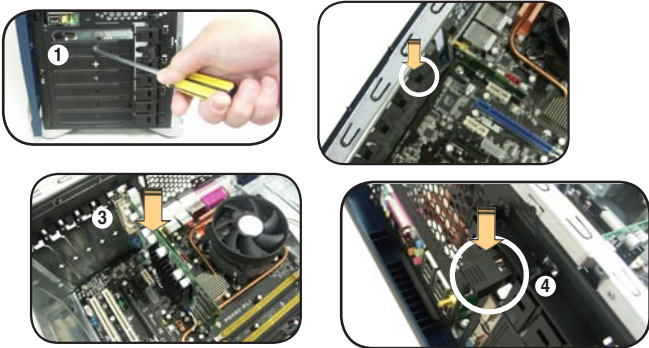
Traditional Chinese

Simplified Chinese

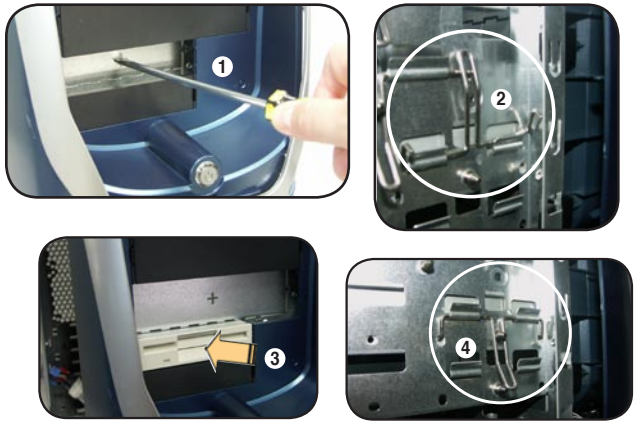
D Installing a hard disk drive (HDD)



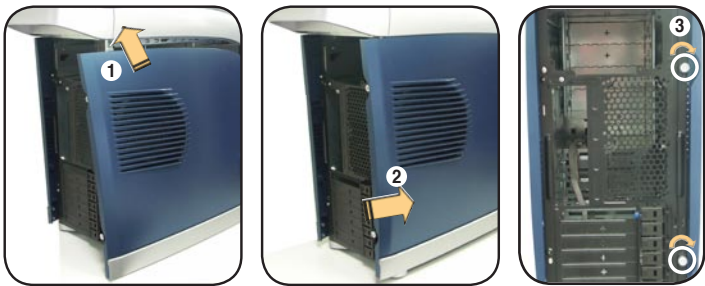
E Installing an expansion card



F Installing a floppy disk drive (FDD)



G Reinstalling the side cover



English

- D**
1. Lift the drive bay lock.
 2. Insert the HDD into the drive bay.
 3. Press down the drive bay lock.
 4. Connect cables.
- E**
1. On the rear panel, remove the metal cover opposite the slot you want to use.
 2. Press down the lock tab.
 3. Install the card.
 4. On the rear panel, push the slot cover lock tab to secure the card.
- F**
1. Remove the drive bay cover and knock-down metal cover.
 2. Lift the drive bay lock.
 3. Insert the FDD into the bay.
 4. Align the FDD holes with the bay holes, then press down the drive bay lock to secure the drive.
 5. Connect cables.
- G**
1. Slide the top edge into the chassis, and align the side cover handle with the curve on the bezel.
 2. Slide the cover toward the front.
 3. Turn the thumbscrews clockwise.

German

French

Spanish

Traditional Chinese

Simplified Chinese