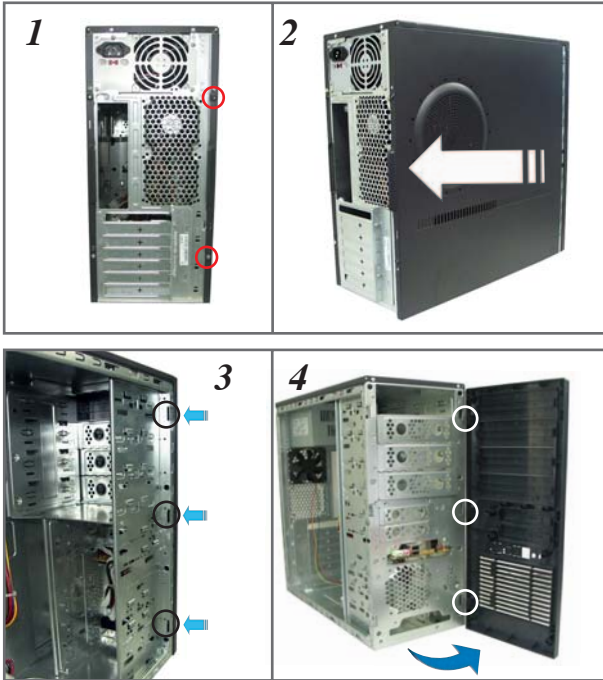
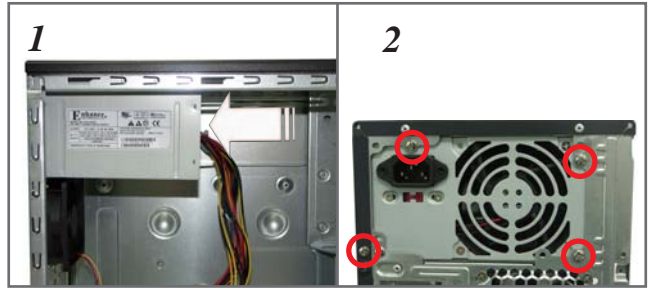


TA-TM5 Series (Standard Model)

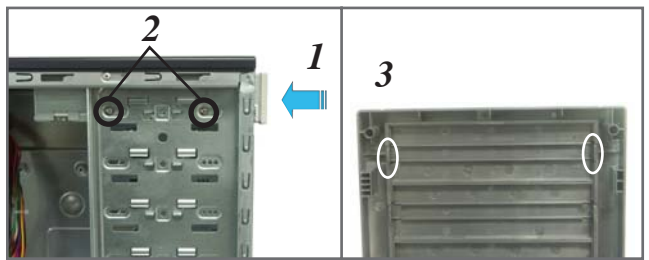
A Removing the side cover and front bezel



B Installing the power supply unit (PSU)



C Installing an optical disk drive (ODD)



Continued at the back

English

- A**
1. Remove the screws on the rear panel.
 2. Push the side cover towards the rear panel.
- Repeat steps 1 and 2 to remove the other side cover.
3. Release the side tabs that secure the front bezel to the chassis.
 4. Swing the front bezel in the direction of the arrow. Unhook the hinge-like tabs.
- B**
1. Slide the PSU into the slot until it snugly fits the metal rail.
 2. Secure with screws.
- C**
1. Insert the ODD into the bay.
 2. Align the ODD holes with the bay holes, then secure the ODD with screws on both sides of the bay.
 3. Release the lock tabs on the front bezel to disengage the drive cover.

German

French

Spanish

Russian

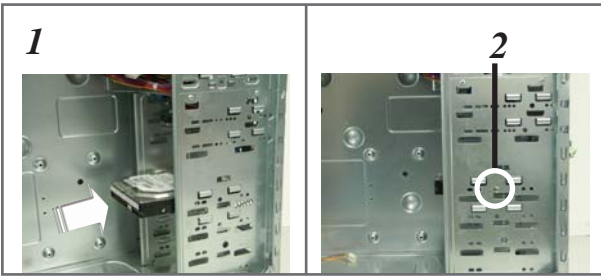
Traditional Chinese

Simplified Chinese

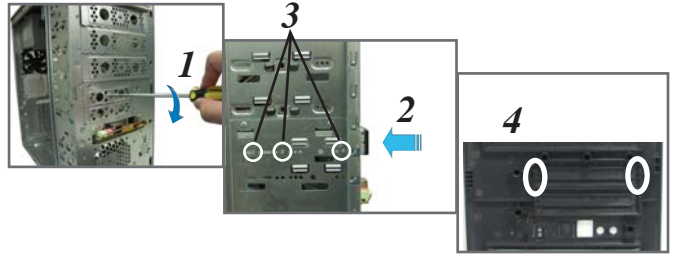
Arabic

TA-TM5 Series (Standard Model)
continued

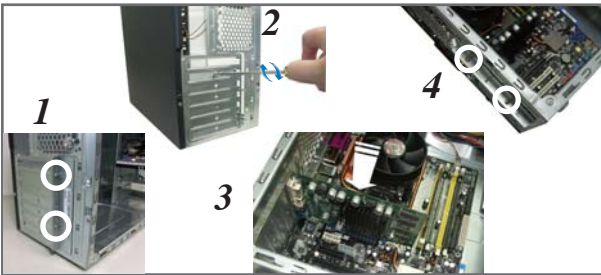
D Installing a hard disk drive (HDD)



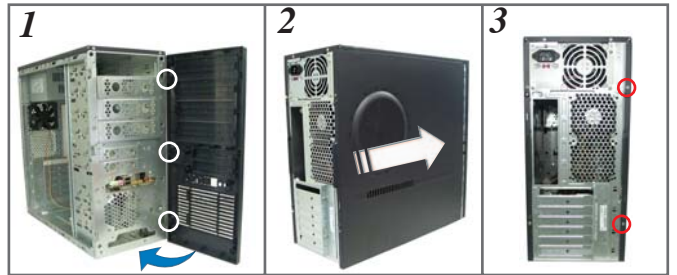
E Installing a floppy disk drive (FDD)



F Installing an expansion card



G Reinstalling the side cover and front bezel



English

- D**
 1. Insert the HDD into the bay.
 2. Secure the HDD with a screw on both sides of the bay.

- E**
 1. Using a screwdriver, push the knock-down metal cover in and out of the chassis until it is removed.
 2. Insert the FDD into the bay.
 3. Secure the FDD with screws.
 4. Release the lock tabs on the front bezel to disengage the drive cover.

- F**
 1. Remove the screws securing the bracket to the chassis. Remove the expansion slot bracket.
 2. Remove the metal cover on the rear panel.
 3. Lay the chassis on a flat, stable surface. Align the card connector with the slot, then press firmly until the card is completely seated on the slot.
 4. Replace the expansion slot bracket and secure it with the screws you removed earlier.

- G**
 1. Hook the hinge-like tabs to the holes on the chassis. Swing the front bezel in the direction of the arrow and push to secure the front bezel to the chassis.
 2. Push the side cover towards the front bezel.
 3. Drive screws on the rear panel.

German

French

Spanish

Russian

Traditional Chinese

Simplified Chinese

Arabic