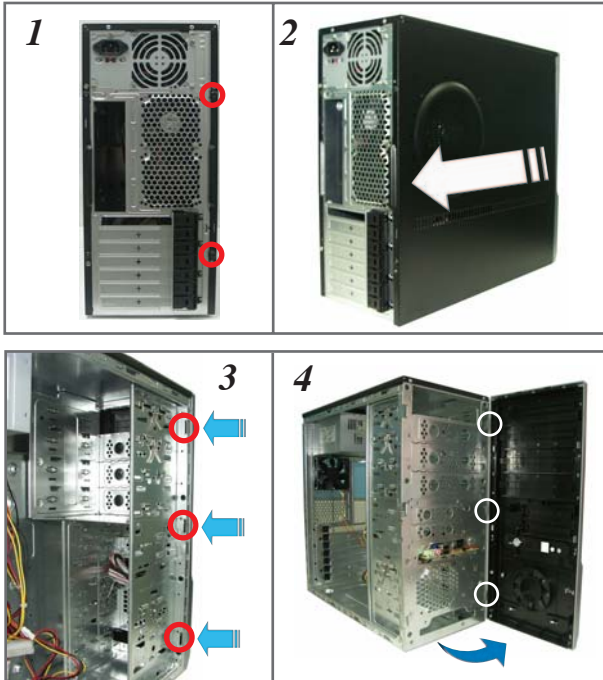
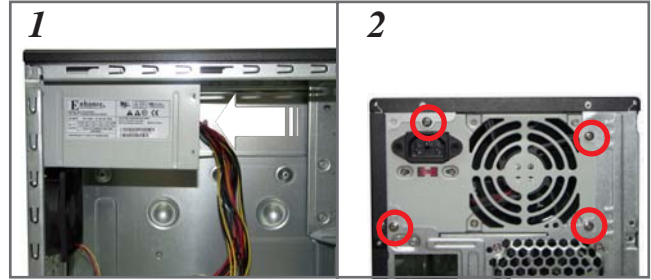


# TA-TM5 Series (*Screwless Model*)

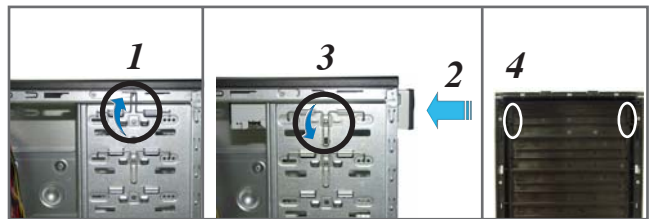
## **A** Removing the side cover and front bezel



## **B** Installing the power supply unit (PSU)



## **C** Installing an optical disk drive (ODD)



Continued at the back

### English

- A**
1. Remove the screws on the rear panel.
  2. Push the side cover towards the rear panel.
  3. Release the side tabs that secure the front bezel to the chassis.
  4. Swing the front bezel in the direction of the arrow. Unhook the hinge-like tabs.
- B**
1. Slide the PSU into the slot until it snugly fits the metal rail.
  2. Secure with screws.
- C**
1. Push the bay lock upward.
  2. Insert the ODD into the bay.
  3. Align the ODD holes with the bay holes, then push down the bay lock to secure the ODD.
  4. Release the lock tabs on the front bezel to disengage the drive cover.

### German

### French

### Spanish

### Russian

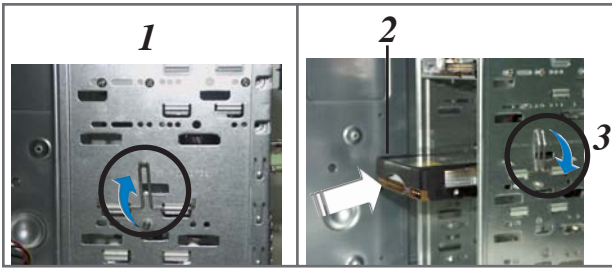
### Traditional Chinese

### Simplified Chinese

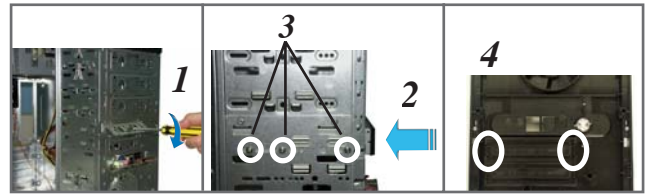
### Arabic

**TA-TM5 Series (Screwless Model)**  
*continued*

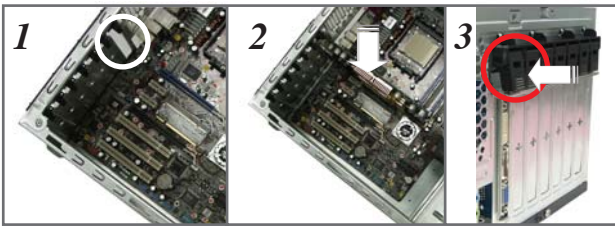
**D** Installing a hard disk drive (HDD)



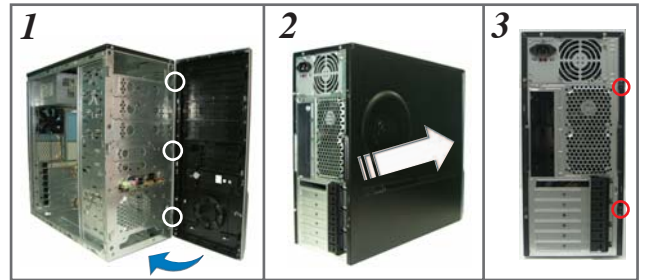
**E** Installing a floppy disk drive (FDD)



**F** Installing an expansion card



**G** Reinstalling the side cover and front bezel



*English*

- D**
1. Push the bay lock upward.
  2. Insert the HDD into the bay.
  3. Align the HDD holes with the bay holes, then push down the bay lock to secure the HDD.
- E**
1. Using a screwdriver, push the knock-down metal cover in and out of the chassis until it is removed.
  2. Insert the FDD into the bay.
  3. Secure the FDD with screws.
  4. Release the lock tabs on the front bezel to disengage the drive cover.
- F**
1. Remove the metal cover opposite the slot that you want to use.
  2. Align the card connector with the slot, then press firmly until the card is completely seated on the slot.
  3. Push the expansion card lock on the rear panel to secure the slot.
- G**
1. Hook the hinge-like tabs to the holes on the chassis. Swing the front bezel in the direction of the arrow and push to secure the front bezel to the chassis.
  2. Push the side cover towards the front bezel.
  3. Drive screws on the rear panel.

*German*

*French*

*Spanish*

*Russian*

*Traditional Chinese*

*Simplified Chinese*

*Arabic*