



MOVING FORWARD
FASTER®

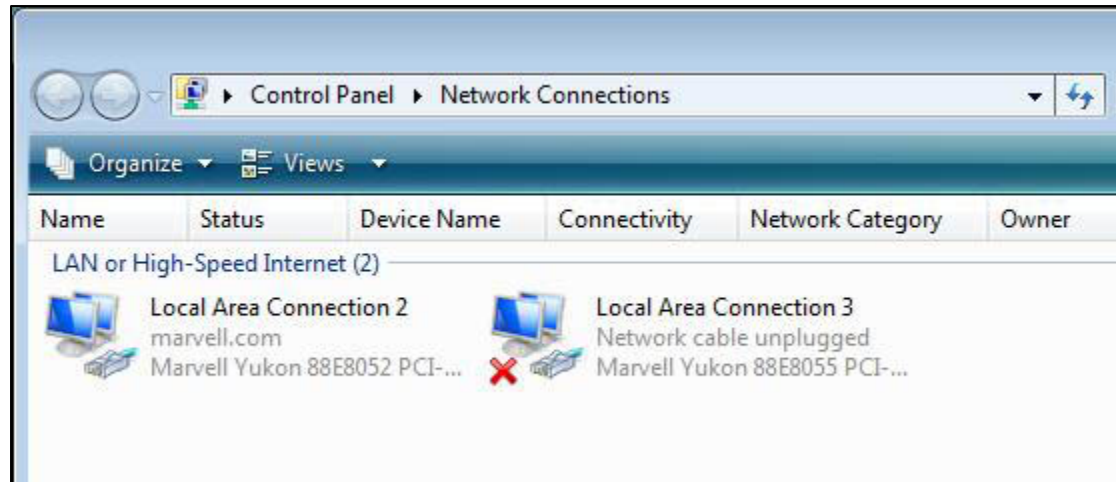


Using NCU

May 5, 2008

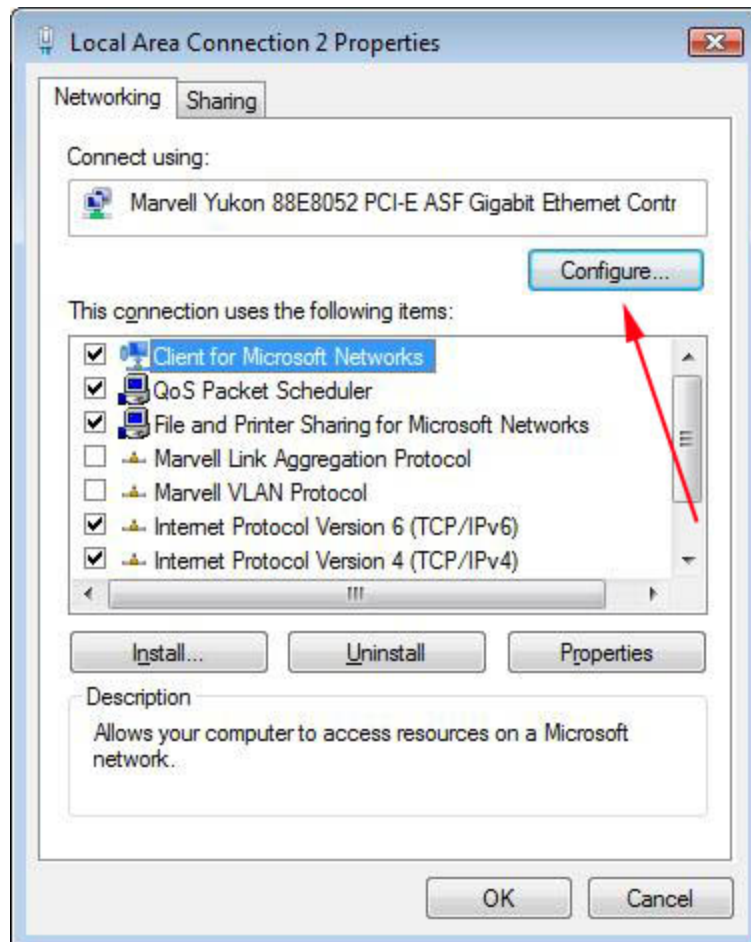
MOVING FORWARD
FASTER®

Two Yukon Controllers Installed



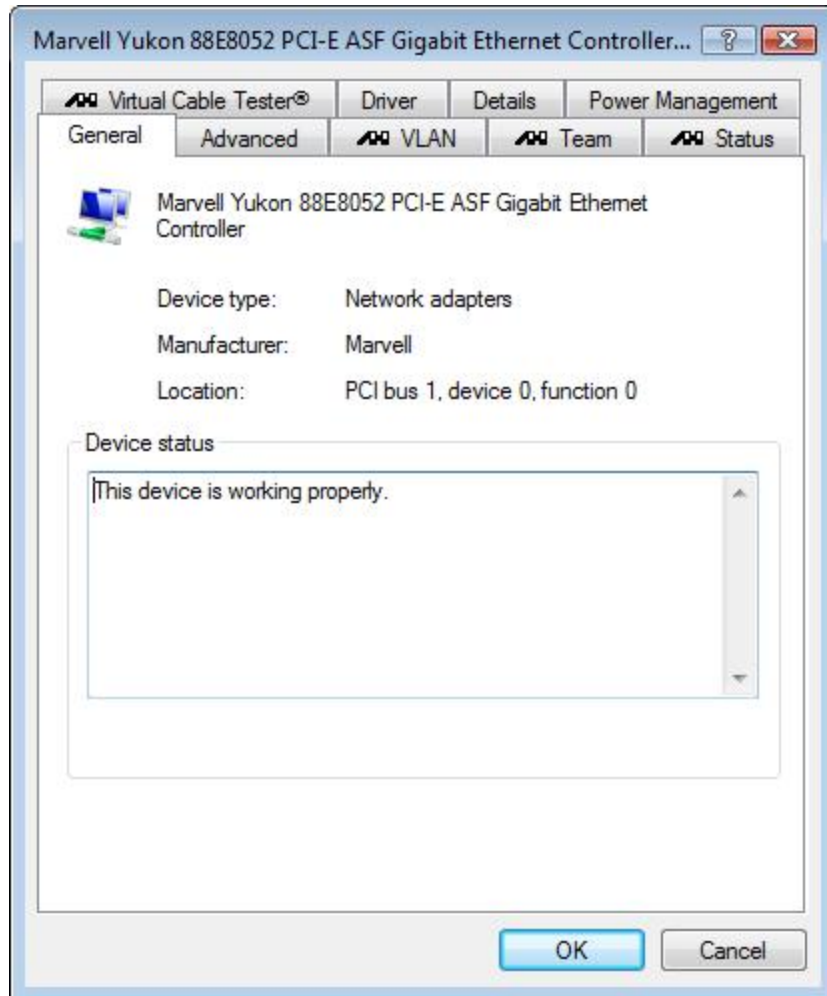
88E8052 and 88E8055 network controllers

Configuring NCU



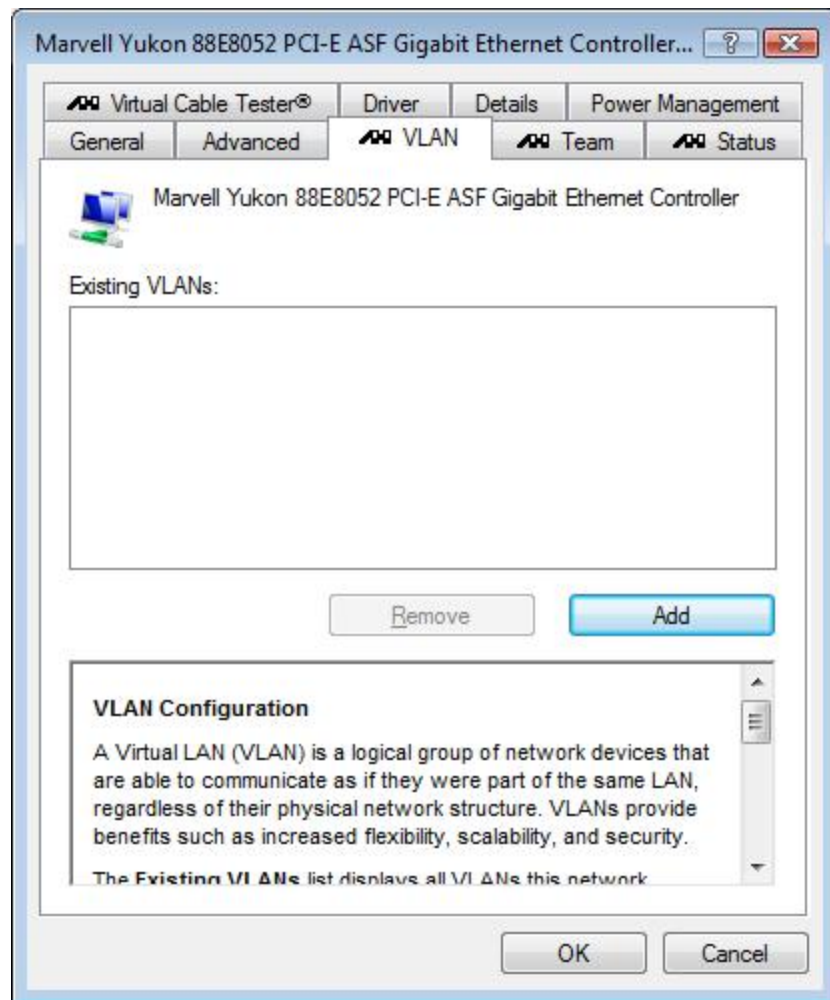
Click on the Configure button

NCU Configuration Screen

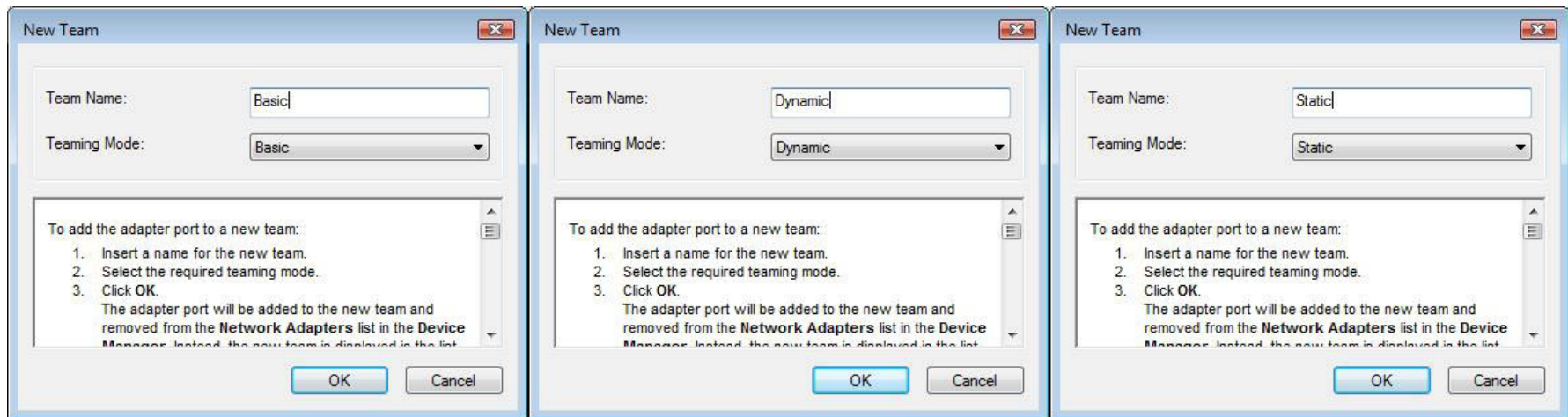


This is the NCU configuration screen to setup VLANs, Team adapters, run VCT, or check the status

Configuring VLANs



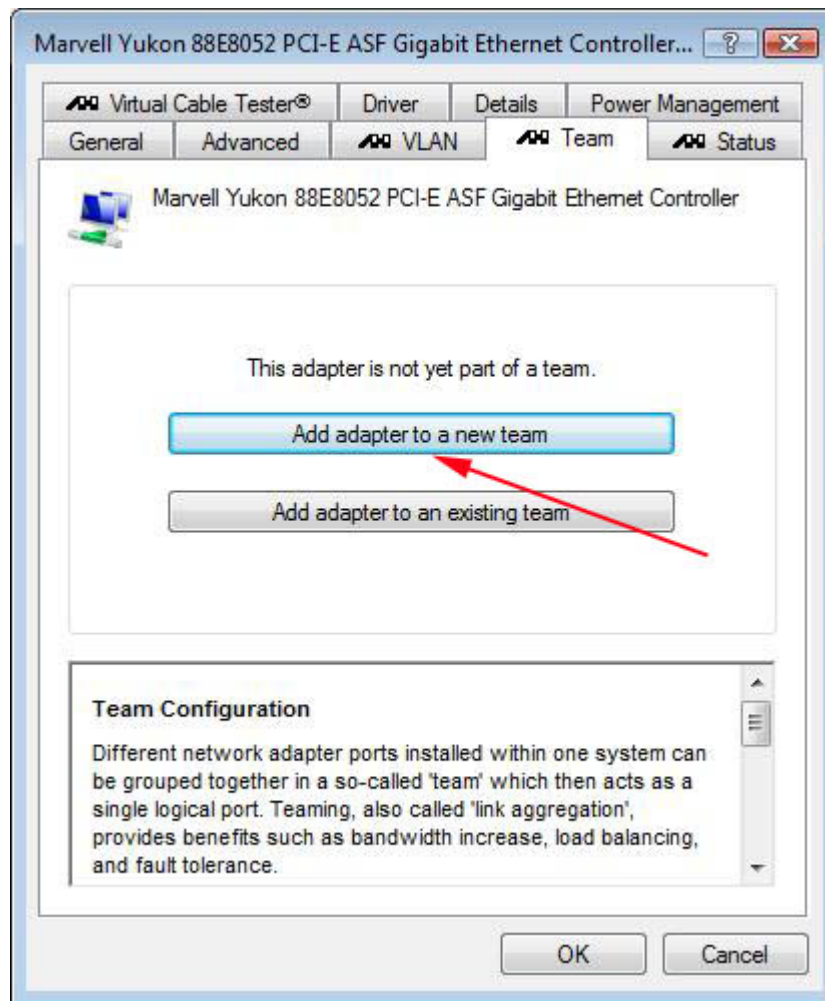
Basic, Dynamic, or Static Teaming



Basic Teaming is the most easiest to setup. Does not require a Gig switch with 802.3ad or LAGG protocol

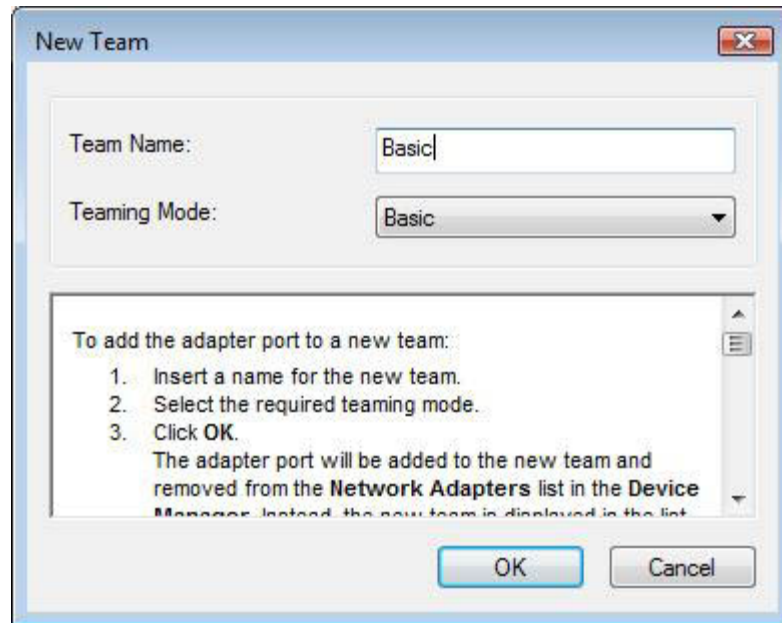
Dynamic or Static Teaming requires a managed Gig switch that supports the 802.3ad and LAGG protocol.

Creating Basic Team



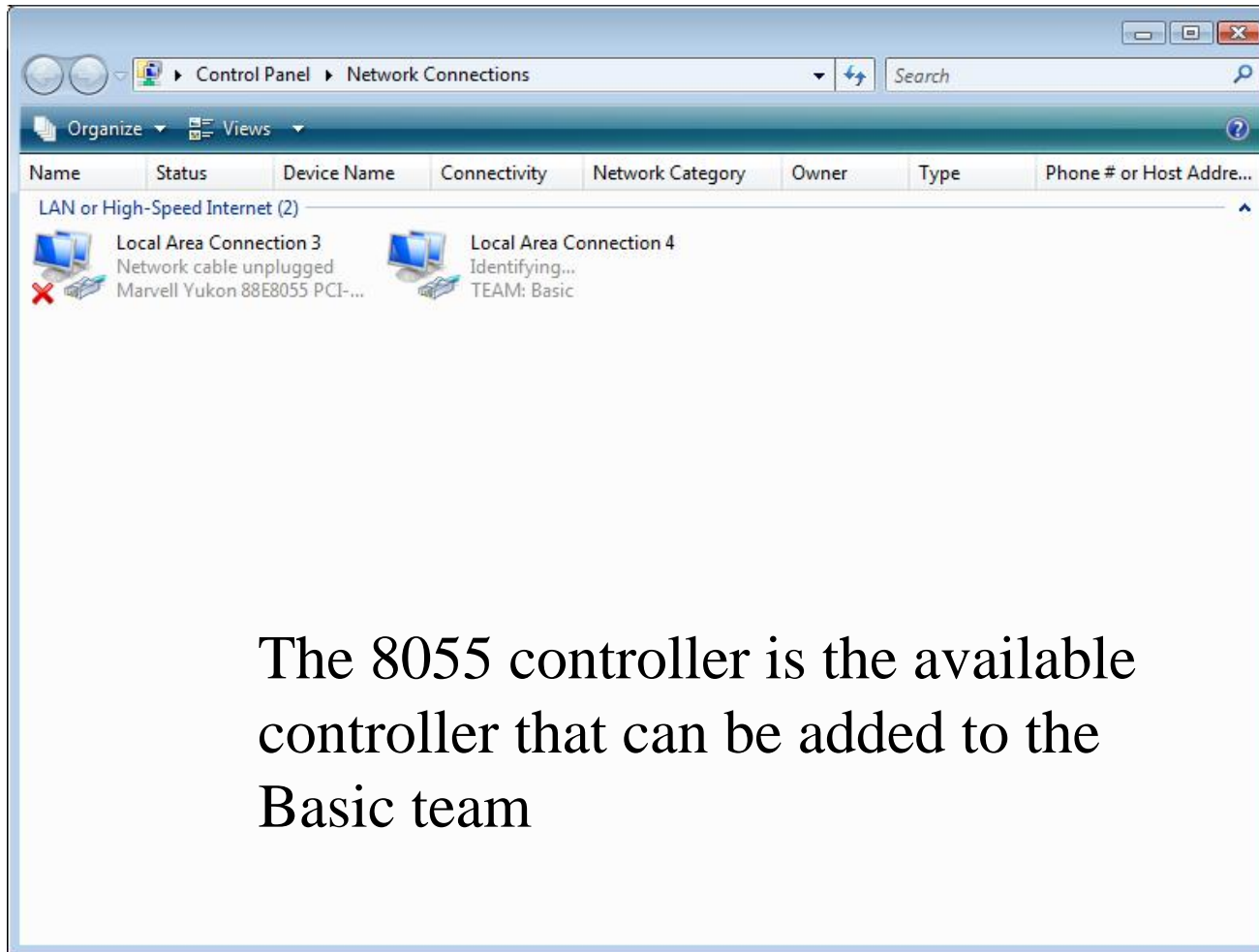
This will add the 88E8052
into the team

Create the Basic Team

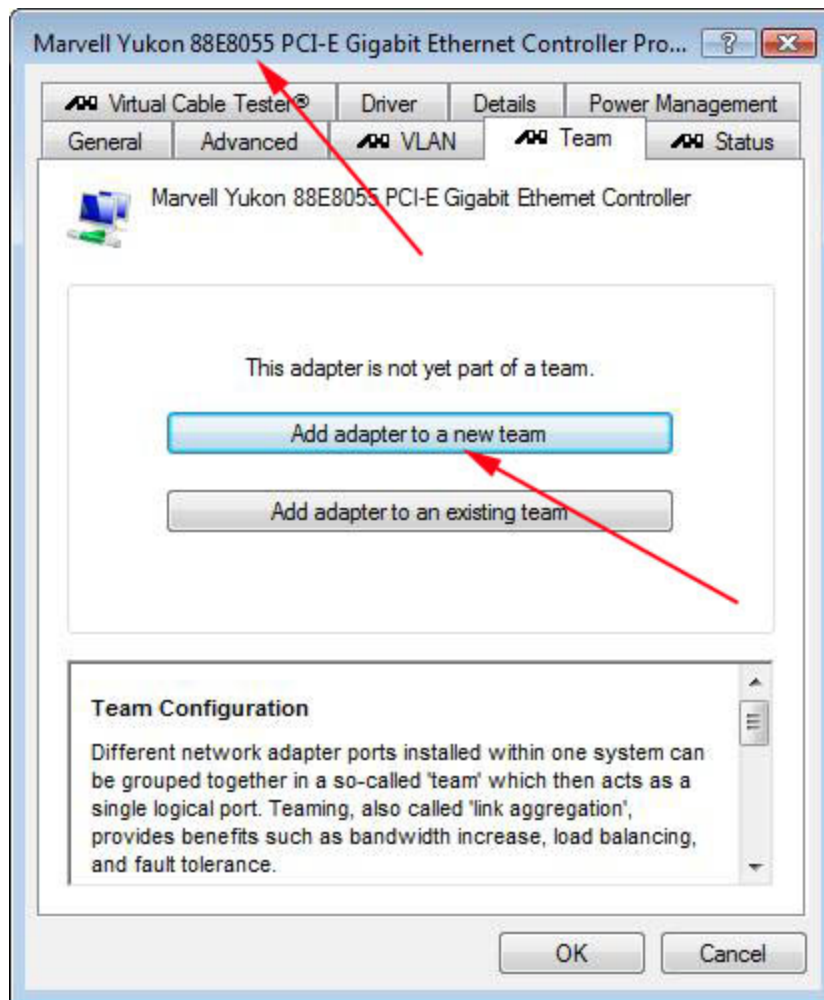


Select “Basic” from the Teaming Mode and call the Team Name “ Basic”

Basic Team created with 8052

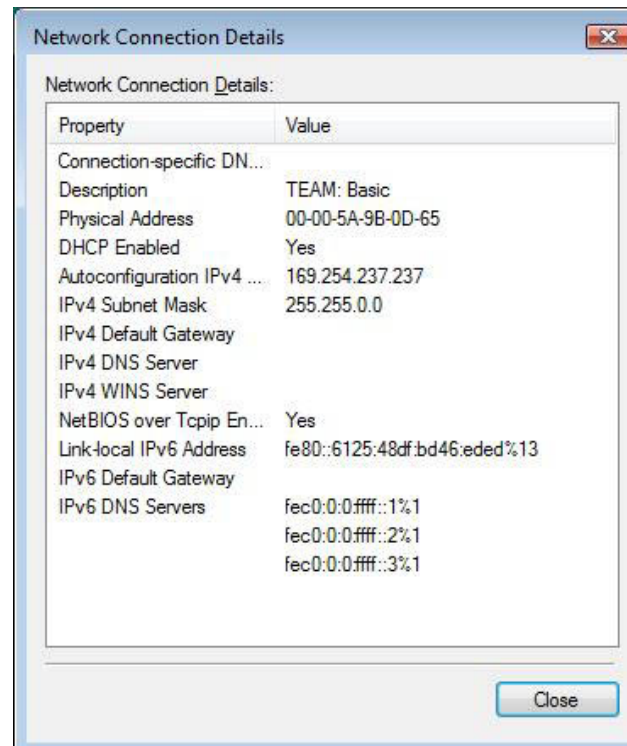
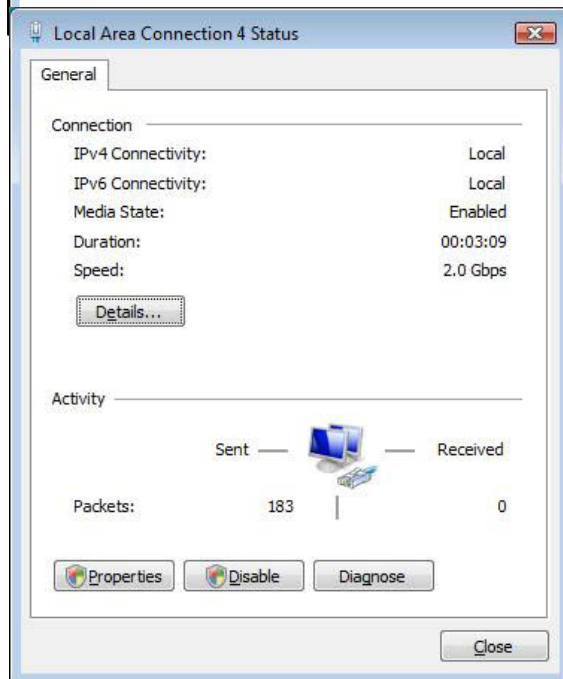
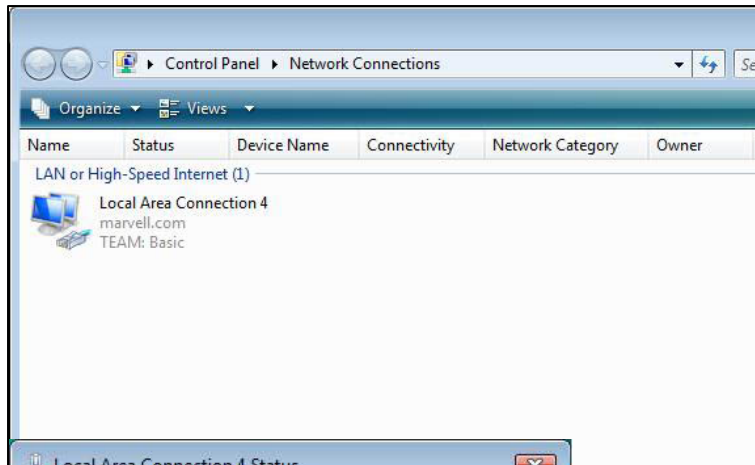


Add 8055 to Basic Team



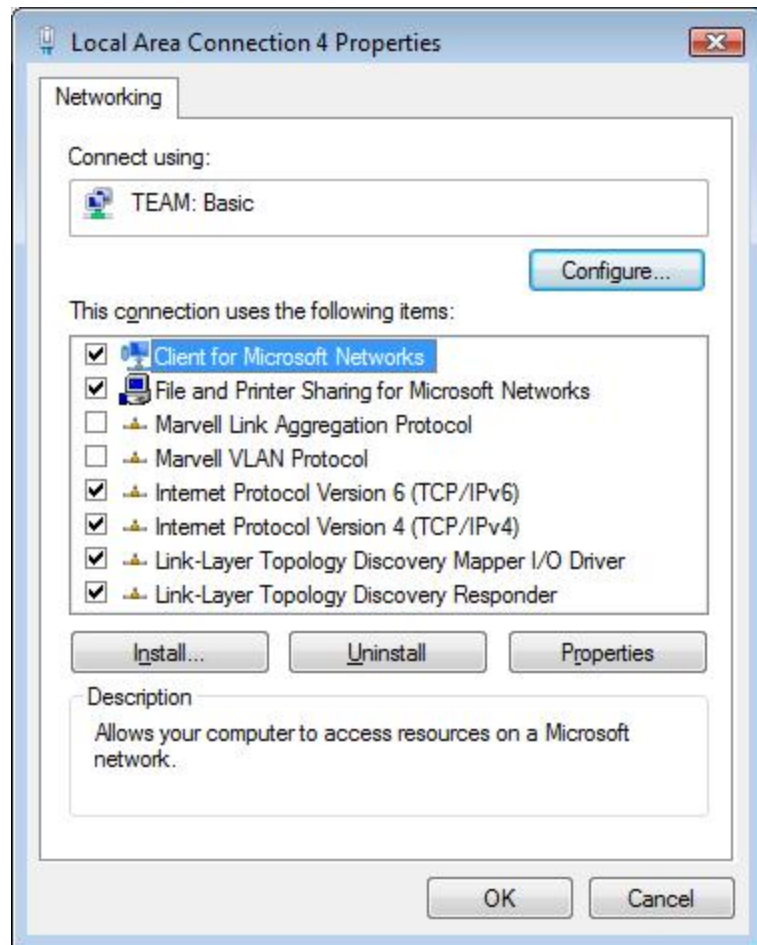
Select the 8055 controller and add this controller to the Basic Team. The Basic Team will now have the 8055 and 8052 teamed

Basic Team Created



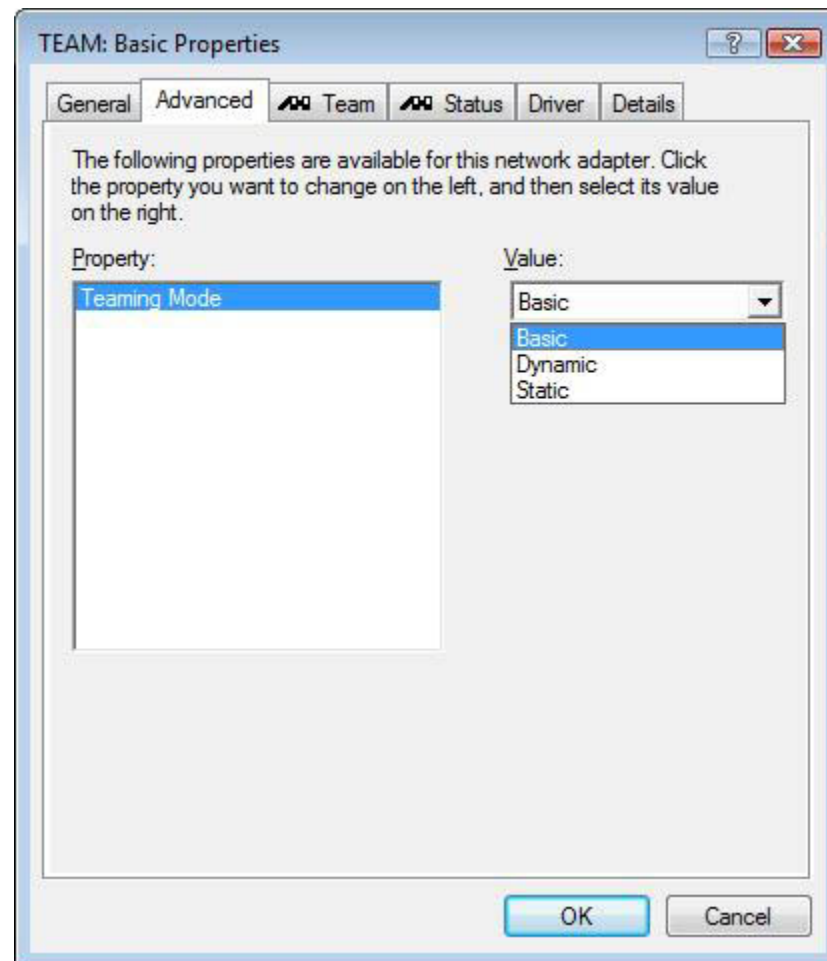
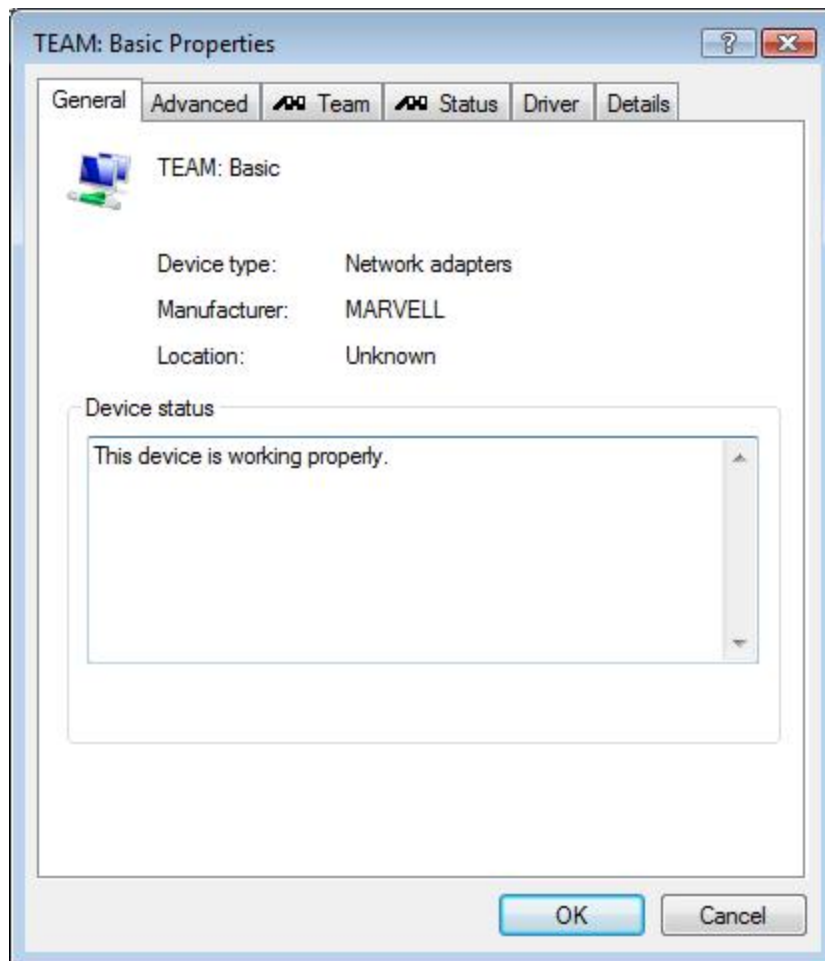
Since both ports are connected to a Gig switch, the link is 2Gbps

Basic Team Properties

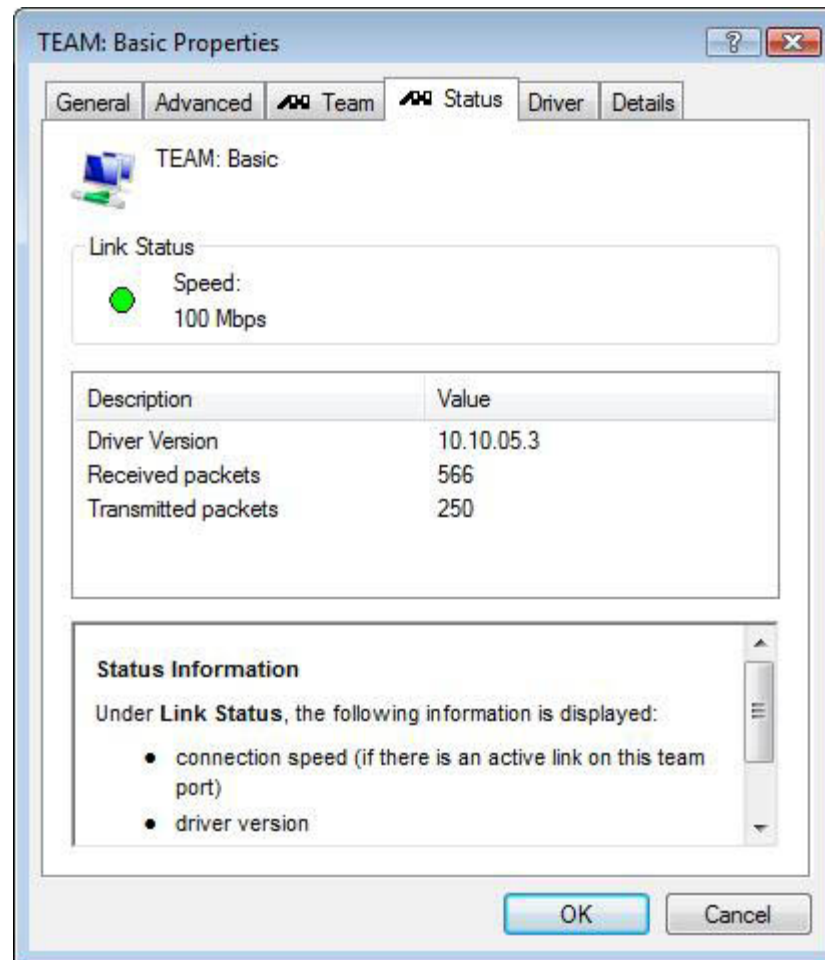
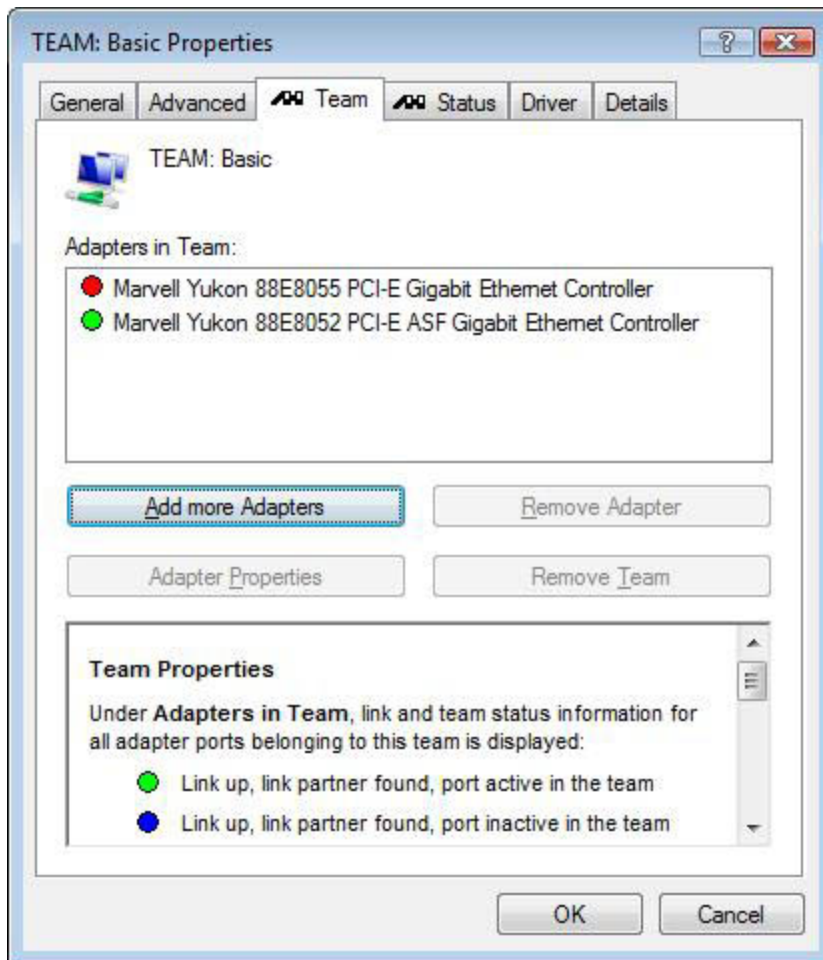


You can set the IP address with a fixed or DHCP address like a regular adapter

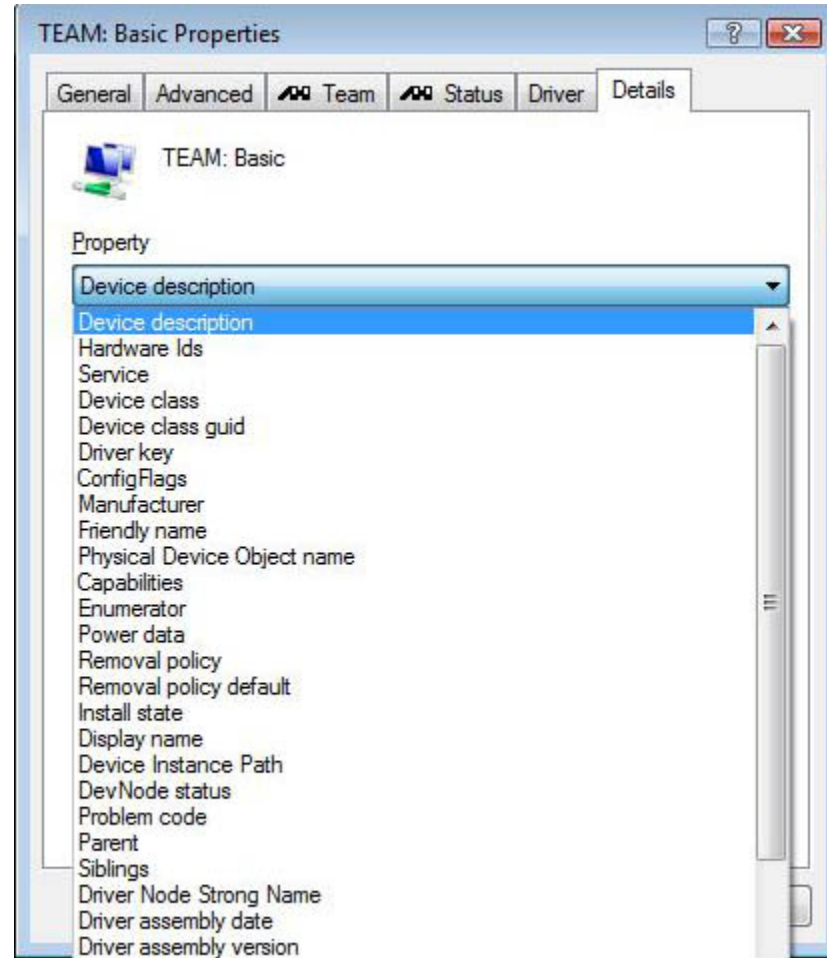
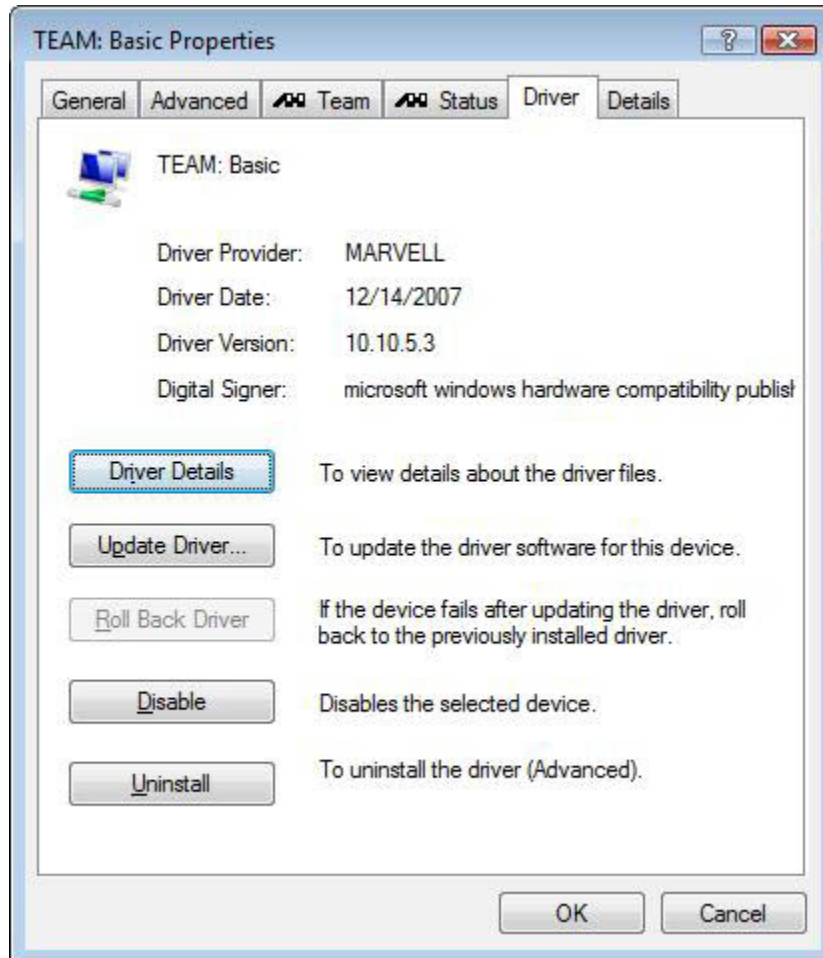
General and Advanced Team Properties



Team and Status Properties



Driver and Details Tab



Device Manager Properties

