

## ASUS Disk Unlocker instruction

The ASUS exclusive Disk Unlocker utility is designed for hard disk drives with a capacity larger than 2048GB. Disk Unlocker provides an easy-to-use interface and allows all drive space to be identified and utilized, breaking the HDD size limitation of various operating systems. Follow the instruction below to use ASUS Disk Unlocker.

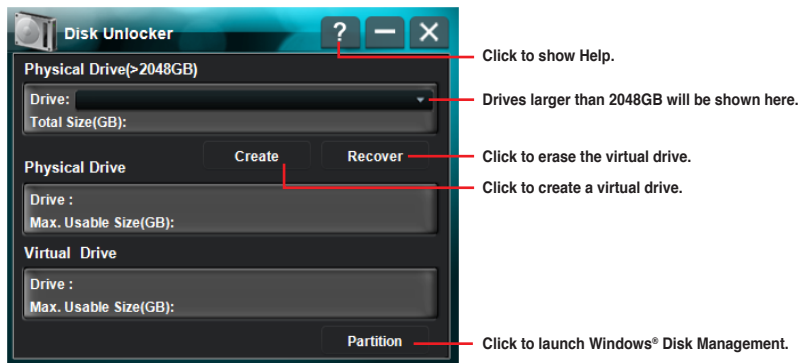


- ASUS Disk Unlocker is exclusively for ASUS motherboards only. DO NOT use it on motherboards of other manufacturers.
- On Intel® platforms, Disk Unlocker supports IDE and AHCI modes. RAID mode will be supported with Intel® RST 10.5 or newer versions.
- On AMD® platforms, Disk Unlocker supports IDE mode only. AHCI and RAID modes require future AMD® official updates.

- Download Disk Unlocker from ASUS official website at [http://event.asus.com/mb/2010/Disk\\_Unlocker](http://event.asus.com/mb/2010/Disk_Unlocker) and install it to your system.
- Launch Disk Unlocker by clicking **Start > All Programs > ASUS > Disk Unlocker > Disk Unlocker**.



- Refer to page 2 and 3 for OS, BIOS and partition format compatibility.
- Due to OS structure, Windows® XP requires driver installation for Disk Unlocker support. Refer to page 4 for details.



### Creating a virtual drive

- Drives with a capacity larger than 2048GB will be shown in the **Drive** drop-down list. Select a drive and click **Create**.



- Drives smaller than 2048GB or in GPT format will not appear in the Drive drop-down list.
- It is recommended to use Windows® Drive Management to manage the drive for better compatibility and upgradability when using as a data drive.

- The unallocated drive space created by Disk Unlocker appears in the **Virtual Drive** field and requires to be partitioned for further usage.



- To partition the virtual drive, click **Partition** to launch Windows® **Disk Management**.
- The virtual drive(s) created by Disk Unlocker will be removed if the utility is uninstalled.
- For Windows® 7 / Vista OS, convert the drive to GPT format using Windows® Disk Management to fully utilize a virtual drive created by Disk Unlocker and with a capacity larger than 2048GB. Windows® XP OS does not support the GPT format.

## Deleting a virtual drive

To delete the virtual drive, click **Recover**.



A warning message appears indicating **"The data in the virtual drive will be lost if you recover it. Would you continue?"** Backup your data to another drive before clicking **Yes** to delete the virtual drive.

## Partition Style information

The following two partition styles are used for the operating system to organize partitions on the disk.

### Master Boot Record (MBR)

Master Boot Record (MBR), a 512 byte boot sector of a storage device, contains a small amount of executable code called the master boot code, and the partition table which is used to identify the type and location of partitions on a hard disk.

### GUID Partition Table (GPT)

The GUID Partition Table (GPT) was introduced as part of the Extensible Firmware Interface (EFI) initiative. GPT provides a more flexible mechanism for partitioning disks than the older Master Boot Record (MBR) partitioning scheme that has been common to PCs.

## Disk Unlocker compatibility and notice

BIOS Type	OS	Windows 7 / Vista											
		64bit						32bit					
	Format	Boot			Data			Boot			Data		
	Mode	IDE	AHCI	RAID	IDE	AHCI	RAID	IDE	AHCI	RAID	IDE	AHCI	RAID
Legacy BIOS	MBR (w/o DU)	Complete HDD space is unable to be utilized											
	MBR (with DU)	O	O (IRST 10.1*)	O (IRST 10.5**)	O	O (IRST 10.1*)	O (IRST 10.5**)	O	O (IRST 10.1*)	O (IRST 10.5**)	O	O (IRST 10.1*)	O (IRST 10.5**)
	GPT (w/o DU)				O	O	X				O	O	X
	GPT (with DU)				O	O	X				O	O	X
EFI BIOS	MBR (w/o DU)	Complete HDD space is unable to be utilized											
	MBR (with DU)	O	O (IRST 10.1*)	O (IRST 10.5**)	O	O (IRST 10.1*)	O (IRST 10.5**)	O	O (IRST 10.1*)	O (IRST 10.5**)	O	O (IRST 10.1*)	O (IRST 10.5**)
	GPT (w/o DU)	O	O (IRST 10.1*)	O (IRST 10.5**)	O	O (IRST 10.1*)	O (IRST 10.5**)				O	O (IRST 10.1*)	O (IRST 10.5**)
	GPT (with DU)	O	O (IRST 10.1*)	O (IRST 10.5**)	O	O (IRST 10.1*)	O (IRST 10.5**)				O	O (IRST 10.1*)	O (IRST 10.5**)

\* Supports IRST 10.1 or above versions

\*\* Supports IRST 10.5 or above versions

BIOS Type	OS	Windows XP											
		64bit						32bit					
	Format	Boot			Data			Boot			Data		
	Mode	IDE	AHCI	RAID	IDE	AHCI	RAID	IDE	AHCI	RAID	IDE	AHCI	RAID
Legacy BIOS	MBR (w/o DU)	Complete HDD space is unable to be utilized											
	MBR (with DU)	O	X	X	O	X	X	O	X	X	O	X	X
	GPT (w/o DU)				O	X	X						
	GPT (with DU)				O	X	X						
EFI BIOS	MBR (w/o DU)	Complete HDD space is unable to be utilized											
	MBR (with DU)	O	X	X	O	X	X	O	X	X	O	X	X
	GPT (w/o DU)				O	X	X						
	GPT (with DU)				O	X	X						



- For Windows® XP OS, please load the **Microsoft® Native IDE driver** before using Disk Unlocker.
- For Windows® XP OS, You must restart your system to complete the installation of Disk Unlocker.
- The virtual drive(s) created by Disk Unlocker will be removed if the utility is uninstalled.
- If you create a virtual drive on a USB external hard drive, the virtual drive will be identified as a removable device. Always remove the virtual drive by using **Safely Remove Hardware** before detaching the USB external hard drive.
- We suggest to connect the SATA hard drives prior to motherboard chipset-controlled SATA ports for better compatibility.
- For better hardware compatibility, update the BIOS to the latest version before using Disk Unlocker.
- You must restart your system to complete the uninstallation of Disk Unlocker.
- Please detach all USB flash drives before installing Windows® 7 / Vista operating system.
- GPT is not supported under certain OS due to OS limitation. Refer to the table above for details.
- You can convert a physical hard drive from MBR to GPT using Windows® Disk Management. However, if the capacity of the drive is larger than 2048GB and a virtual drive is created using Disk Unlocker, converting the drive to GPT using Windows® Disk Management may lead to data loss.

## Loading the Disk Unlocker driver during Windows® XP installation

Follow the instructions below to install the Windows® XP operating system to a hard drive with a drive space larger than 2048GB.

1. Download **Disk Unlocker for Windows XP** from ASUS official website and unzip **FilterDriverForOsSetup\_XP\_Vxxxx.zip**. The folder named **XP32** and **XP64** contain the required filter driver to install 32/64-bit Windows XP to a hard drive larger than 2048GB.
2. Create a blank formatted 3.5" floppy disk.
3. Copy all the files from the **XP32** or **XP64** folder to the floppy disk.
4. During the OS installation, the system prompts you to press the F6 key to install third-party SCSI or RAID driver.
5. Press <F6>, and then insert the floppy disk with the Disk Unlocker driver into the floppy disk drive.
6. When prompted to select the SCSI adapter to install, ensure that you select **ASUS Disk Unlocker**.
7. Follow the succeeding screen instructions to complete the installation.