

# KCMA-D8

How to identify if MB supports Opteron 4200 CPU


By ASUS Server BU  
Nov 11, 2011


# How to identify if MB supports Opteron 4200 CPU

## Serial Number(SN) in Outer Carton

Support Opteron 4100 series CPU\*

Support Opteron 4200 series CPU

Serial	Number
B8S2AC000001	

Serial	Number
B9S2YZ000001	



- MB shipped after September 2011, Serial Number(SN) : **B9S2XXXXXXXXX** or above, support Opteron 4200 CPU. (see P.5 for BIOS version and upgrade SOP)

\* Not support Opteron 4200 series CPU

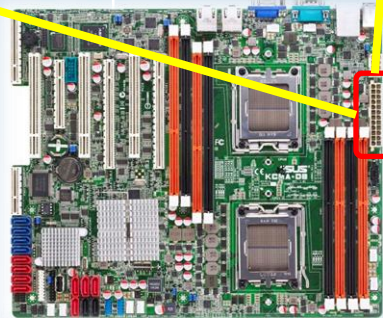
# How to identify if MB supports Opteron 4200 CPU

## Serial Number label location

Support Opteron 4100 series CPU\*



Support Opteron 4200 series CPU



- MB shipped after September 2011, Serial Number(SN) : **B9**S2XXXXXXXXX or above, support Opteron 4200 CPU. (see P.5 for BIOS version and upgrade SOP)

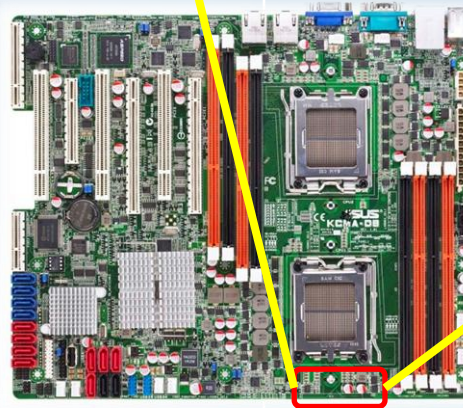
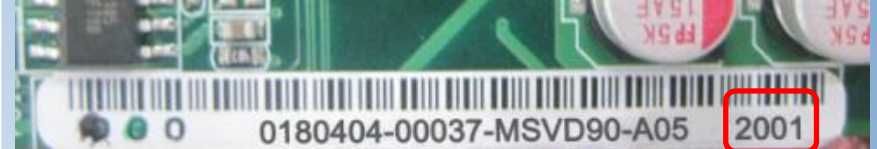
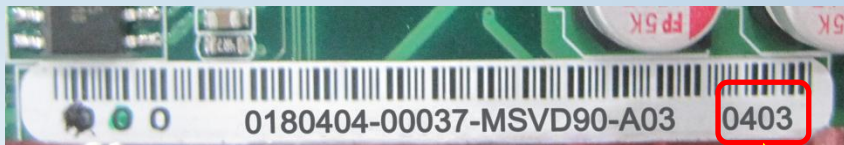
\* Not support Opteron 4200 series CPU

# How to identify if MB supports Opteron 4200 CPU

## BIOS version

Support Opteron 4100 series CPU\*

Support Opteron 4200 series CPU



BIOS must use **2001 or later version**

\* Please follow the BIOS upgrade SOP in next page

\* Not support Opteron 4200 series CPU

## BIOS Upgrade SOP



If your KCMA-D8 MB's Serial Number starts with **B9S2xxxxxxxx**, but it loaded with **BIOS 0403** (or former)

\* BIOS version **2001** or later DOES NOT need to flash the BIOS to support Opteron 4200

⇒ **Please follow below BIOS upgrade SOP to support Opteron 4200 series CPU**



Items MUST prepare :

- AMD Opteron 4100 series CPU (at least 1 piece)
- **BIOS version 2001** (or later)  
[http://www.asus.com/Server\\_Workstation/Server\\_Motherboards/KCMAD8/#download](http://www.asus.com/Server_Workstation/Server_Motherboards/KCMAD8/#download)
- DOS-bootable USB flash drive

SOP :

1. Make sure the USB flash drive loaded with **BUPDATER** and **BIOS 2001**
2. Plug in **Opteron 4100 series CPU** in KCMA-D8 **CPU socket 1**
3. Power on the system and boot to DOS environment
4. type: **BUPDATER /iKCMA-D8-ASUS-2001.ROM**
5. When BUPDATER complete the flash process, please shut down the system
6. Change CPU to Opteron 4200 series, system will boot successfully