

C-Media audio utility

The C-Media Superior Quality Audio CODEC provides 8-channel audio capability through the C-Media sound configuration software to deliver the ultimate audio experience on your computer. The software provides high quality audio synthesis/rendering, 3D sound positioning, and S/PDIF Out support.

Follow the installation wizard to install the C-Media Audio Driver from the support CD that came with the motherboard package.

If the C-Media audio utility is correctly installed, you will find the Sound Configuration icon on the taskbar.

From the taskbar, click on the C-Media icon to display the Sound Configuration Main Setting screen.



- You must use 4-channel, 6-channel or 8-channel speakers for this setup.
- C-Media requires Microsoft® Windows® 2000/XP/Vista version. Make sure that one of these operating systems is installed before installing C-Media.

Main Setting

The Main Setting option allows you to configure your audio device settings and use 7.1 Virtual Speaker Shifter.

The screenshot shows the 'CM6501 Sound Configuration' window with the 'Main Setting' tab selected. The window contains several sections: 'Output Device' with a dropdown menu showing 'Analog Output' and 'S/PDIF Output'; 'DSP Mode' with a '7.1' setting and a 'Reset' button; 'Audio System Status' with a '5.1CH' indicator; and a 'Speaker Test' section with a 7.1 speaker diagram and a 'PCM 2CH' output. Annotations with arrows point to various controls: 'Click to select channel configurations.' points to the 'Output Device' dropdown; 'Click [Speaker Icon] for Advanced settings.' points to the 'Speaker Icon' button; 'Click [Speaker Icon] to select S/PDIF Output. Click the drop-down menu for digital and analog options.' points to the 'S/PDIF Output' dropdown; 'Click [Volume Icon] to set the digital volume. Move the slider of each speaker to determine the volume. Click [Reset] to reset the volume.' points to the volume sliders and the 'Reset' button; 'Click to effect the settings and exit.' points to the 'OK' button; 'Click to perform the speaker test.' points to the 'Speaker Test' button; and 'Click to stop the speaker test.' points to the 'Stop' button.

Click to select channel configurations.

Click [Speaker Icon] for Advanced settings.

Click [Speaker Icon] to select S/PDIF Output. Click the drop-down menu for digital and analog options.


Click [Volume Icon] to set the digital volume. Move the slider of each speaker to determine the volume. Click [Reset] to reset the volume.

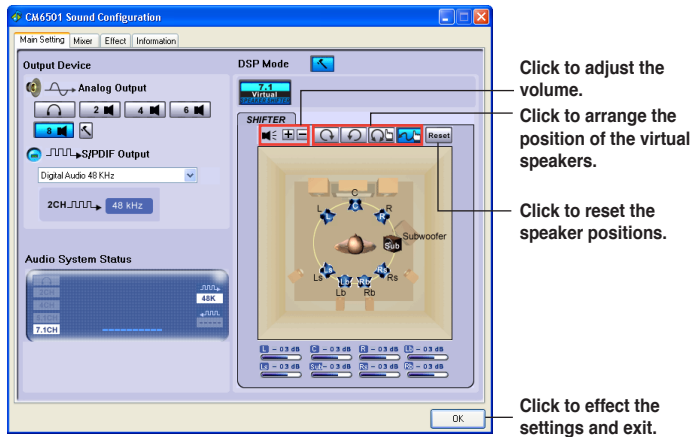
Click to effect the settings and exit.

Click to perform the speaker test.

Click to stop the speaker test.

7.1 Virtual Speaker Shifter

Click  to enable this function.



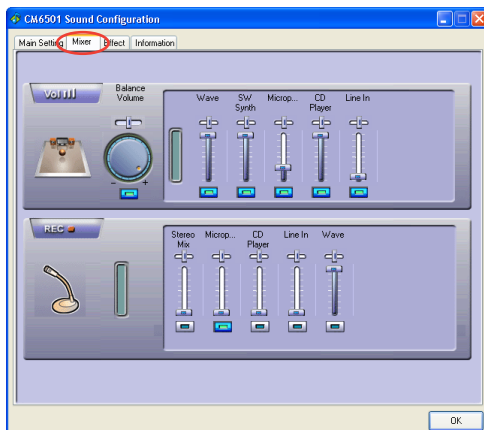
Mixer

The Mixer option allows you to configure audio output/input (record) volume.

Click the control tab and turn the volume button to adjust the output volume.

Make adjustments to Wave, SW Synth, Microphone, CD Player, Line Lin, and Stereo Mix by clicking the control tabs and dragging the sliders up and down to get the desired volume levels.

Click **OK** to effect the settings and exit.

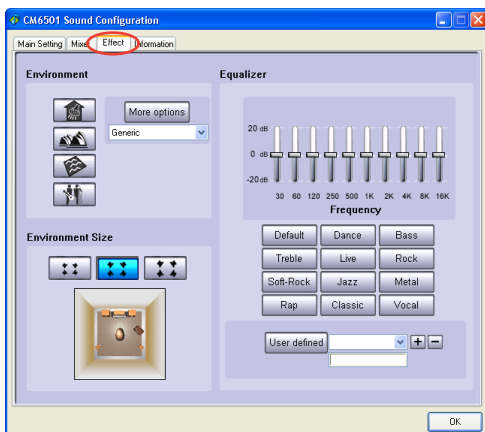


Effect

The Effect option allows you to set your listening environment, adjust the equalizer, or select pre-programmed equalizer settings for your listening pleasure.

Click the shortcut buttons or the drop-down menus for options on changing the acoustic environment. You may manually adjust the equalizer or select a pre-defined mode according to music genre. To select an environment size, simply click the shortcut buttons.

Click **OK** to effect the settings and exit.



Information

Click the Information tab to display information about the 3D audio engine, audio codec, audio driver version, audio controller, and DirectX version.

