

ASUS Drive Xpert

Drive Xpert, an ASUS exclusive technology, secures the data on your hard disk and enhances hard drive performance without the hassles of complicated configurations. With its user-friendly graphical user interface, you can easily arrange hard drive backups or enhance the hard drive's transfer rate.

Drive Xpert modes

There are two modes for Drive Xpert: **EZ Backup** and **Super Speed**.

EZ Backup allows one hard disk to backup the other hard disk automatically. This helps you to save your vital data even if one hard disk is damaged.

Super Speed allows two hard disks to access data simultaneously. The dual channel design largely enhances hard disk transfer rate.

Installing Serial ATA hard disks

To use Drive Xpert in Windows® operating system, we recommend that you prepare three hard disks: one hard disk with operating system already installed, and two hard disks for Drive Xpert configuration.

To install Serial ATA hard disks for Drive Xpert configuration:

1. Install two SATA hard disks into the drive bays.
2. Plug one end of the SATA signal cables to each drive, and plug the other end of the SATA signal cables to the SATA_E1 (orange, port 0) and SATA_E2 (white, port 1) connectors on the motherboard. Refer to manual for the exact location of the SATA connectors.
3. Connect a SATA power cable to the power connector of each drive.



- For optimal performance, we highly recommend that you install identical drives of the same model and capacity.
- We recommend that you use two new hard disks for Drive Xpert configuration.
- The SATA_E1 (orange, port 0) and SATA_E2 (white, port 1) connectors on the motherboard do not support ATAPI devices and hot-plug function.

Launching Drive Xpert in Windows® OS

After installing Drive Xpert from the bundled support DVD, double-click the **Drive Xpert** icon on the Windows® desktop.



Before using the Drive Xpert function, ensure that you have installed the JMicron JMB363 driver in the system.

Configuring EZ Backup / Super Speed



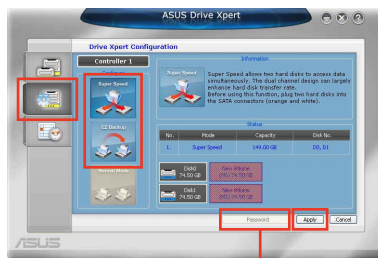
EZ Backup / Super Speed might erase all original data in both hard disks. Ensure that you have back up all your data in your hard disks before using the Drive Xpert function.

To start **EZ Backup / Super Speed** configuration:

1. Click **Drive Xpert Configuration** button.
2. Click **EZ Backup / Super Speed** from the **Drive Xpert Configuration** screen.
3. Click **Apply** to start configuration.

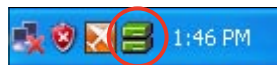


A password confirmation window appears if you have set up the password for mode change. If you forgot the password, you have to do mode change in BIOS setup environment.



Click to set up password

4. Follow the onscreen instructions to complete the configuration.
5. The **Drive Xpert** icon on the Windows® notification area turns green to indicate that **EZ Backup / Super Speed** is set up successfully.



Drive Xpert icon indications

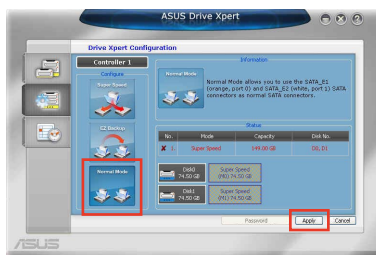
Display status	Description
Green	Drive Xpert is set up successfully
Yellow	Hard disk rebuilding
Gray	No hard disk detected
Red	One hard disk is corrupt

Changing to Normal Mode

This mode allows you to disable the **Drive Xpert** function and use the two SATA connectors as onboard SATA connectors.

To change to **Normal Mode**:

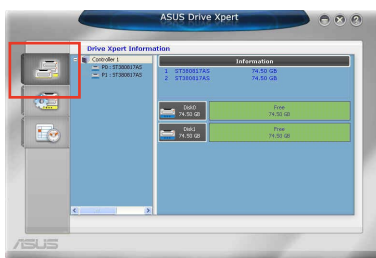
1. Click **Normal Mode** from the **Drive Xpert Configuration** screen.
2. Click **Apply** to start configuration.
3. Follow the onscreen instructions to complete the configuration.



Other feature buttons

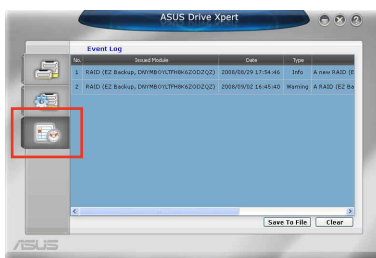
Drive Xpert Information

Click to display the detailed disk information.



Event Log

Click to display event log list that might be helpful for troubleshooting and locating a system malfunction.

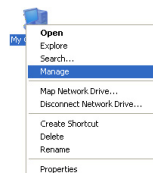


Partitioning volumes

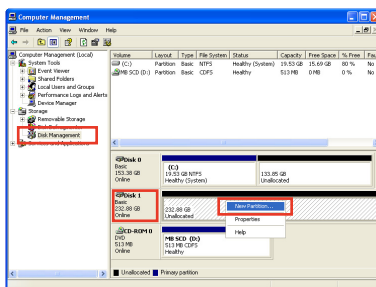
You have to partition volumes for the hard disk after Super Speed configuration or any mode change from Super Speed mode.

To partition volumes:

1. Right-click **My Computer** on the Windows® desktop, and then select **Manage** from the pop-up window.
2. Select **Disk Management**. Right-click the unallocated space of the disk, and then select **New Partition**.



If the **New Partition** option is not available, right-click **Disk** item, and then select **Initialize Disk** to initialize the disk first.



3. Follow the onscreen instructions to complete the volume partition.

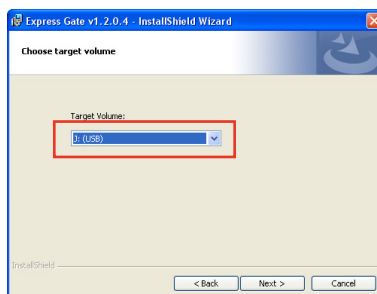
Using Drive Xpert function in Express Gate environment

You may use **Drive Xpert** function in Express Gate environment by preparing only two hard disks.


For Express Gate environment, you need to install Express Gate on a USB flash disk drive using another computer.

Follow below instructions to complete the installation:

1. Plug a USB flash disk drive in a computer with OS already installed.
2. Refer to the Express Gate installation on manual. Ensure to select **USB** as the target disk volume when the **Choose target volume** screen appears.
3. Plug the USB flash disk drive installed with Express Gate to the motherboard. Restart the system, and launch the Express Gate.



Launching Drive Xpert

1. Click  to launch the **ASUS Utility Panel**.



Launch ASUS Utility Panel

2. Launch **Drive Xpert** from the **ASUS Utility Panel**.



- **EZ Backup / Super Speed** might erase all original data in both hard disks. Ensure that you have back up all your data in your hard disks before using the Drive Xpert function.
- When the operating system is already installed in one of the hard disks connected to the SATA_E1 (orange, port 0) or SATA_E2 (white, port 1) connectors, Drive Xpert cannot be configured for system safety. In this case, proceed with mode change in BIOS setup environment if necessary.

Using Drive Xpert function in BIOS setup environment

You may use **Drive Xpert** function in BIOS setup environment. Refer to **section Tools menu** in manual for details.