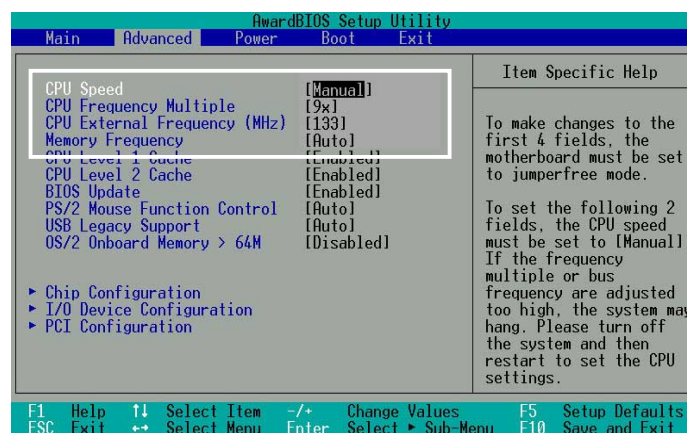


ASUS P4BGL-MX Technical Updates



- This motherboard supports overclocking to 533MHz FSB. To adjust **CPU Speed** and **Memory Frequency**, enter the BIOS Setup Utility and select the **Advanced Menu**. This feature is not an Intel® chipset specification and does not support Intel® HyperThreading Technology.

2.4 Advanced Menu (page 2-14)



CPU Speed

This displays the current speed of the CPU installed.

CPU Frequency Multiple

This field displays frequency multiple value between the CPU's internal frequency (CPU speed) and external frequency.

CPU External Frequency (MHz)

This feature tells the clock generator what frequency to send to the system bus and PCI bus. The bus frequency (external frequency) multiplied by the bus multiple equals the CPU speed.

Memory Frequency [Auto]

This field determines whether the memory clock frequency is set to be in synchronous or asynchronous mode with respect to the system frequency. The options that appear in the popup menu vary according to the CPU Frequency (MHz). Configuration options: [Auto]

15-060174002

