

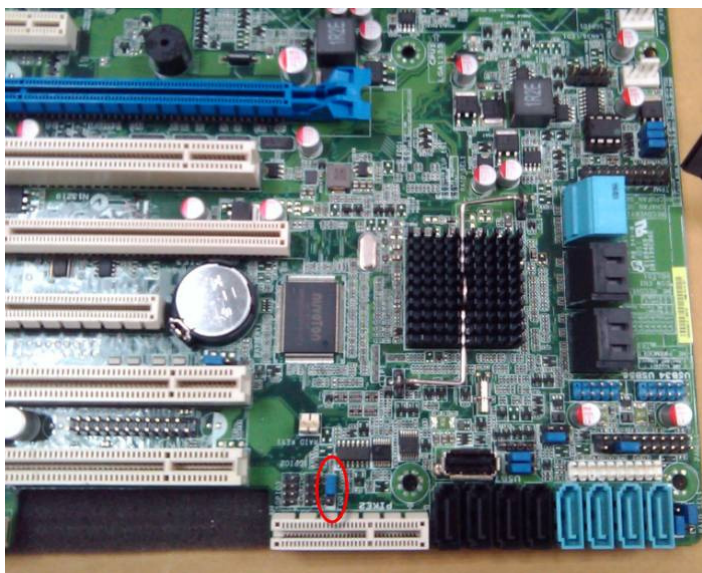
How to make your P8B-E/4L support Ivy Bridge CPU(E3-12xxV2).

Items MUST prepare :

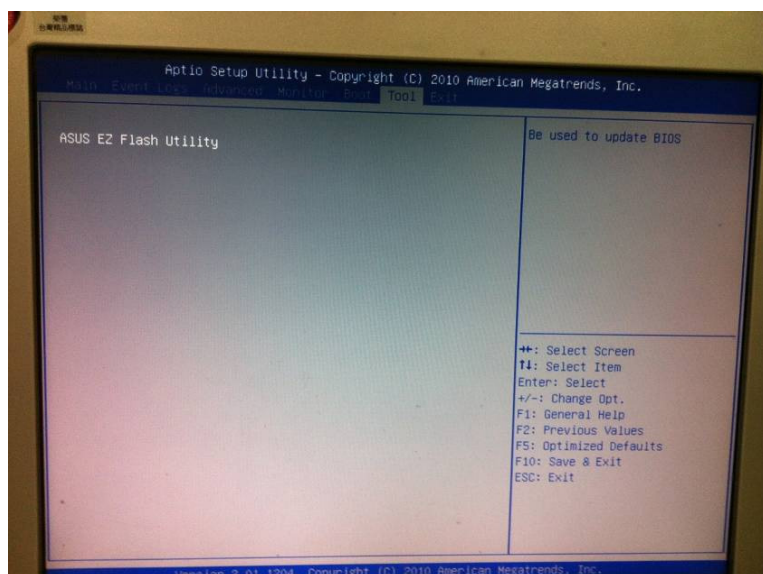
- Sandy Bridge CPU (E3-12xx).
- Ivy Bridge CPU (E3-12xxV2).
- DOS-bootable USB flash drive.

Method 1 :

1. Before upgrading BIOS, must install Sandy Bridge CPU (E3-12xx) and **AC Power Off (Un-plug the PSU).**
2. The FDO jumper default setting is 1-2, please set to 2-3 (as following pic).



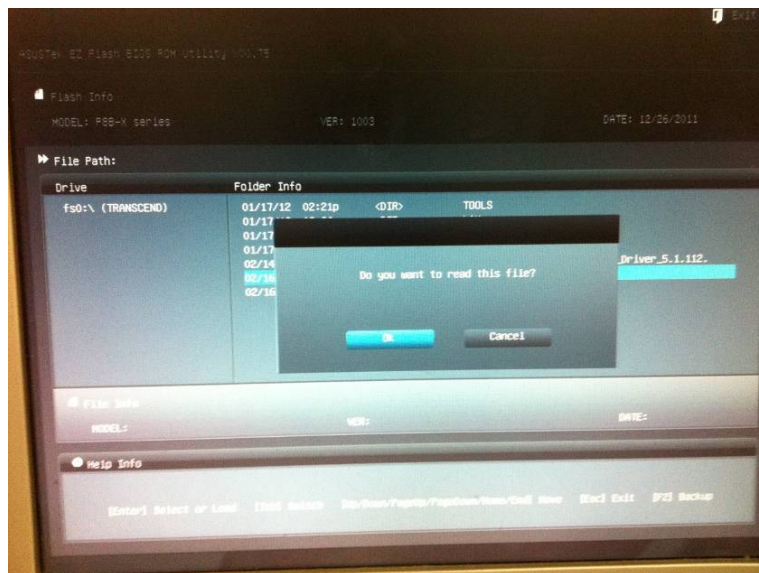
3. Power on the system and enter BIOS, then select Tool\ASUS EZ Flash Utility.



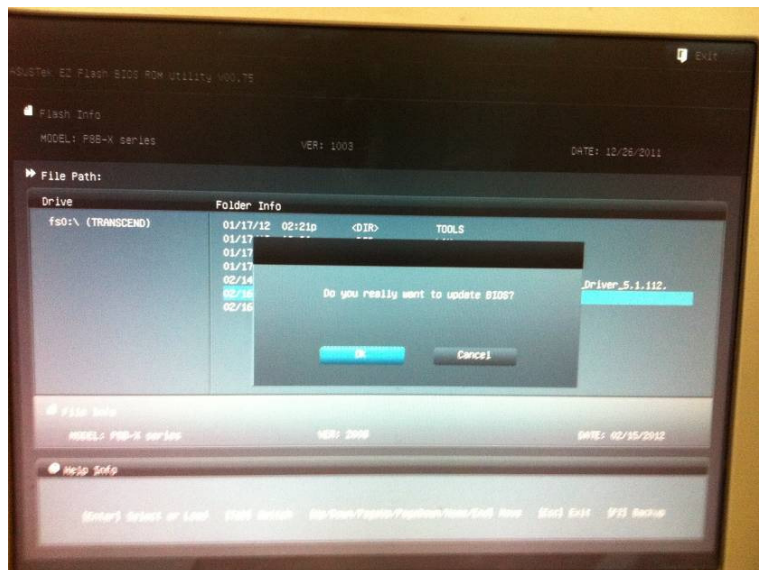
4. Select the “xxxx.ROM” that you want to update BIOS version from your flash disk.



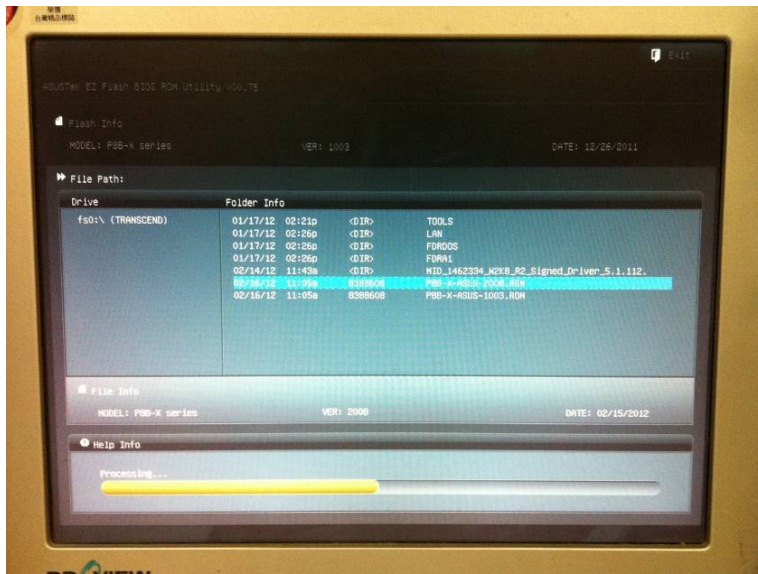
5. Press OK to read file.



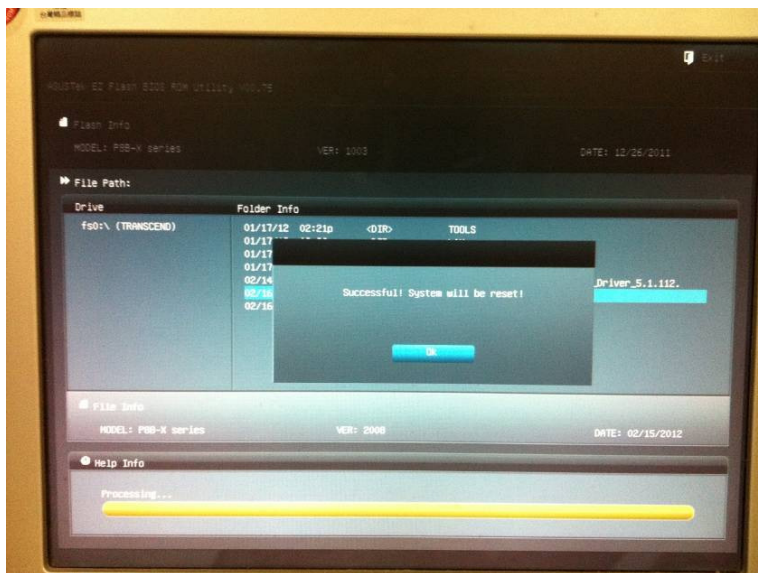
6. Press OK to update BIOS.



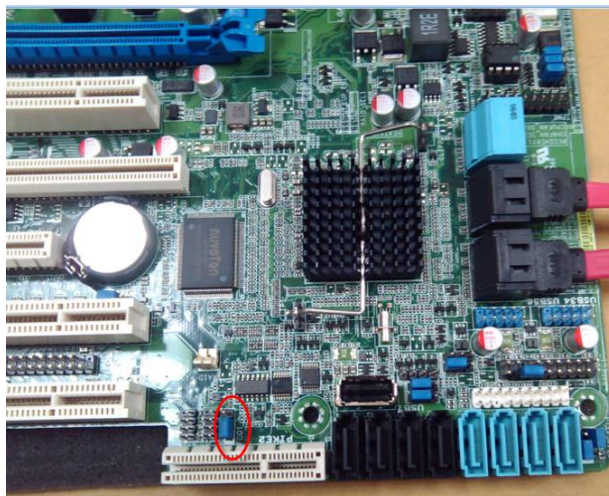
7. Updating BIOS.



8. Updated successfully.



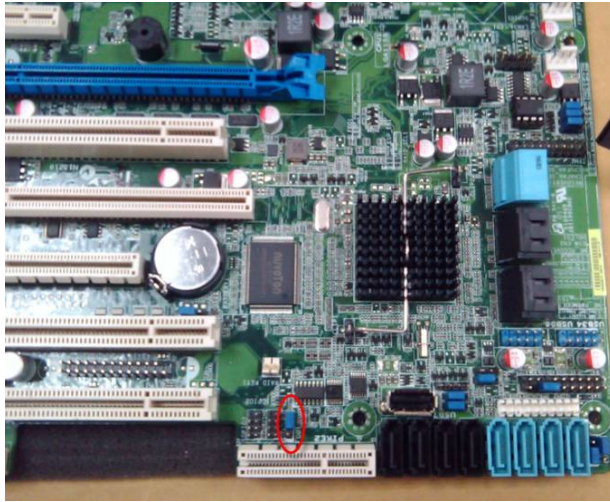
9. **AC Power Off (Un-plug the PSU)** and set FDO jumper to 1-2 (as following pic).



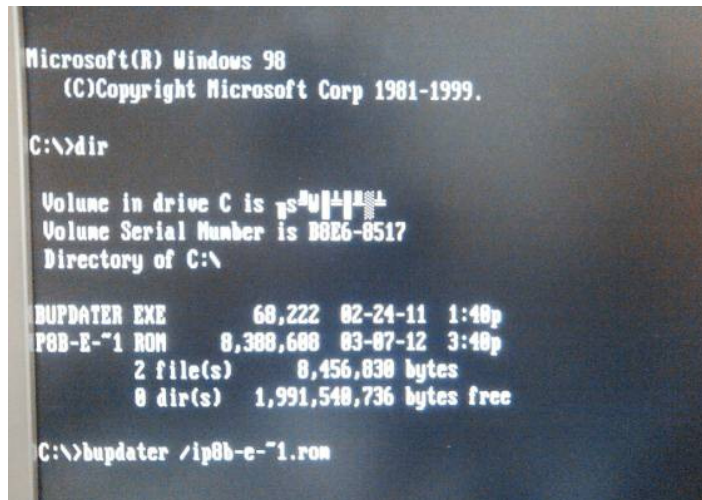
10. Change CPU to Ivy Bridge CPU (E3-12xxV2), then power on to verify if system can start normally.

Method 2 :

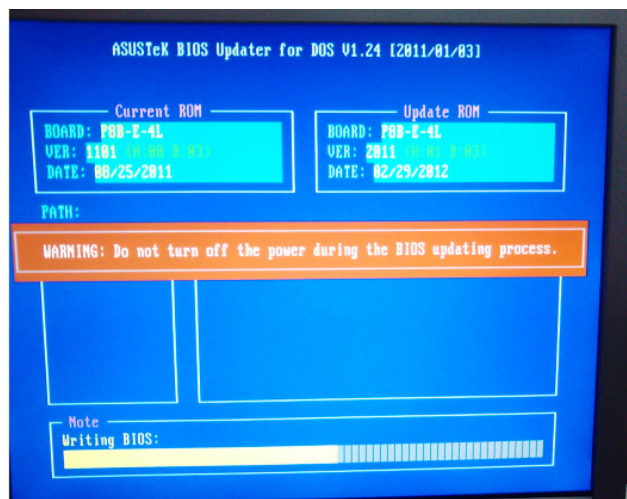
1. Before upgrading BIOS, must install Sandy Bridge CPU (E3-12xx) and **AC Power Off (Un-plug the PSU).**
2. The FDO jumper default setting is 1-2, please set to 2-3 (as following pic).



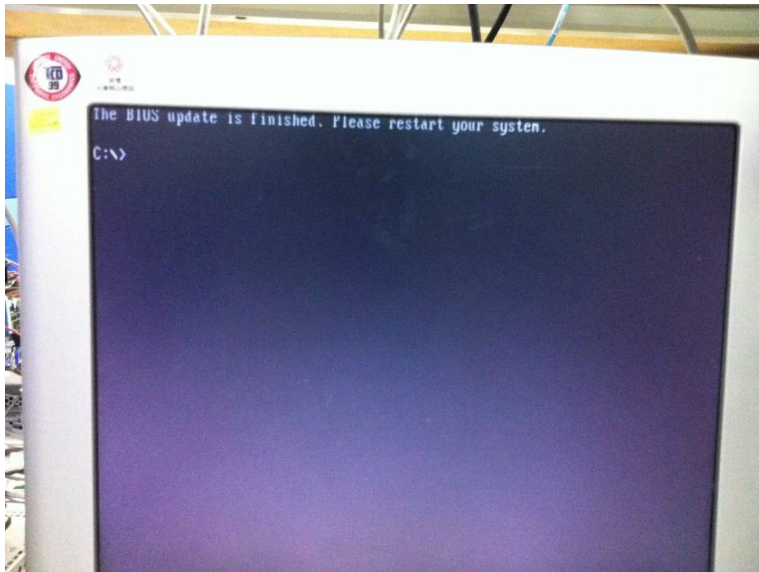
3. Using your bootable flash disk to boot into DOS, and use “bupdater /ixxx.rom” command to update BIOS. (xxx means the ROM’s file name.)



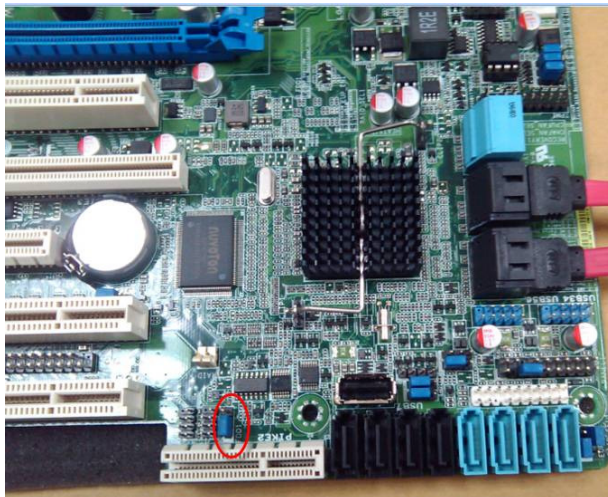
4. Updating BIOS.



5. Update finished.



6. **AC Power Off (Un-plug the PSU)** and set FDO jumper to 1-2 (as following pic).



7. Change CPU to Ivy Bridge CPU (E3-12xxV2), then power on to verify if system can start normally.