

Setup IIS and SNMP for ASWM Installation

Revision 0.2

April 29, 2010

ASUS Confidential



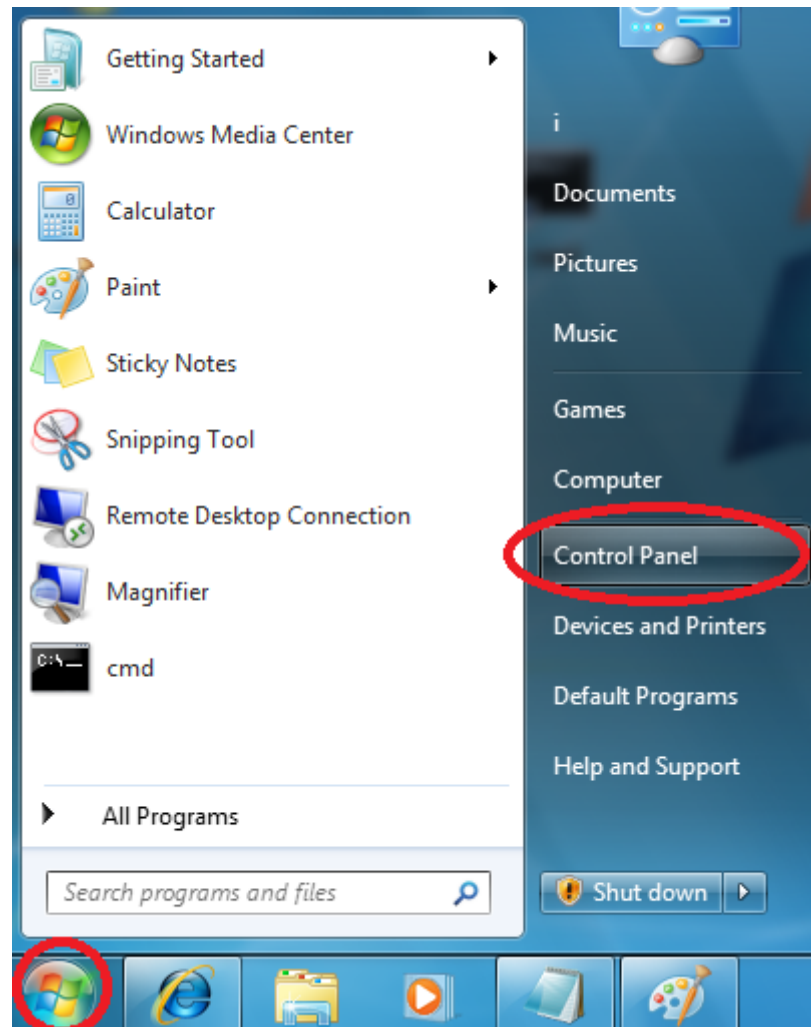
Revision History

Revision	Date	Author	Reason For Change
0.1	04/13/2010	Nigel Wu	1. First release.
0.2	04/29/2010	Nigel Wu	1. Add Windows 2008 R2.

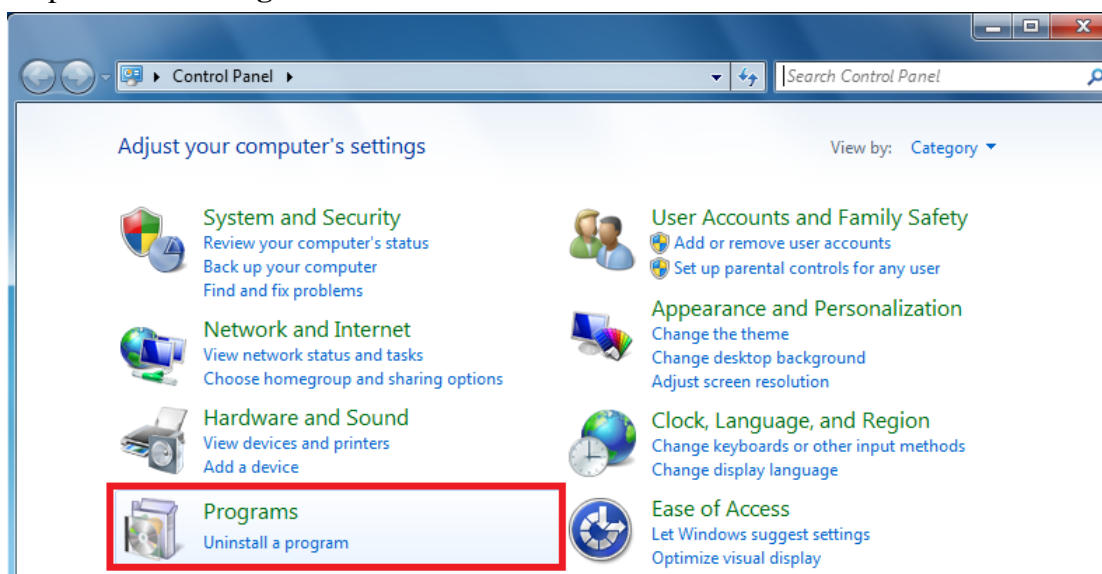
Chapter 1 – Windows Feature Setting

1.1 Windows 7 / Vista

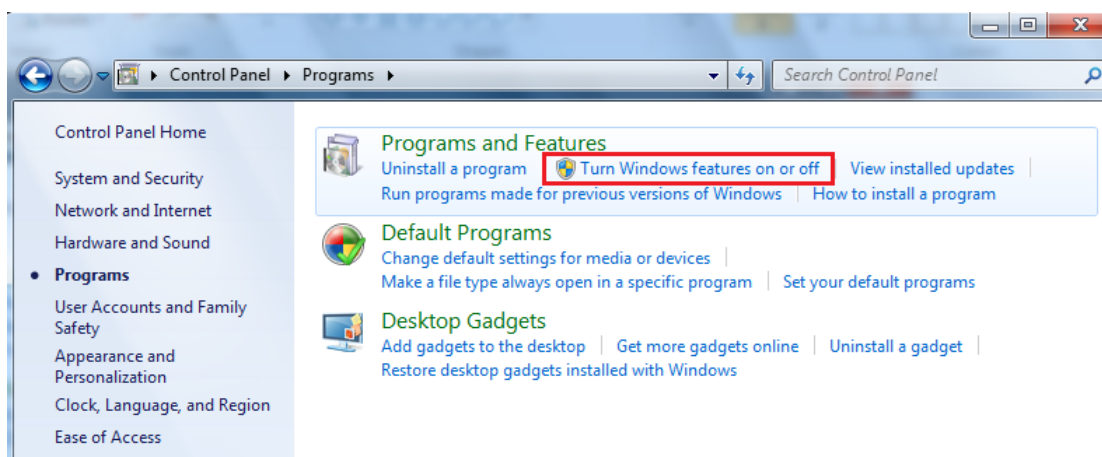
Step 1: Select “Start” => “Control Panel”



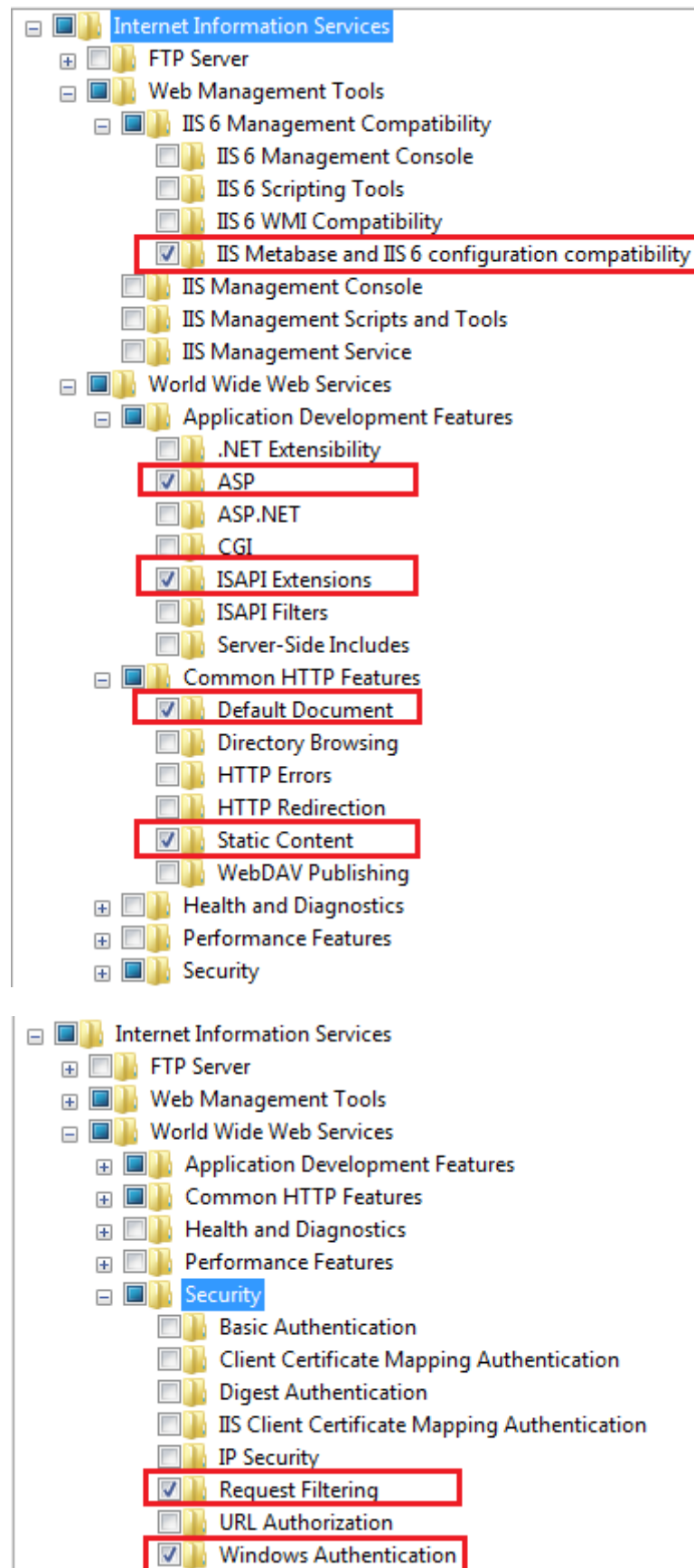
Step 2: Select “Programs”



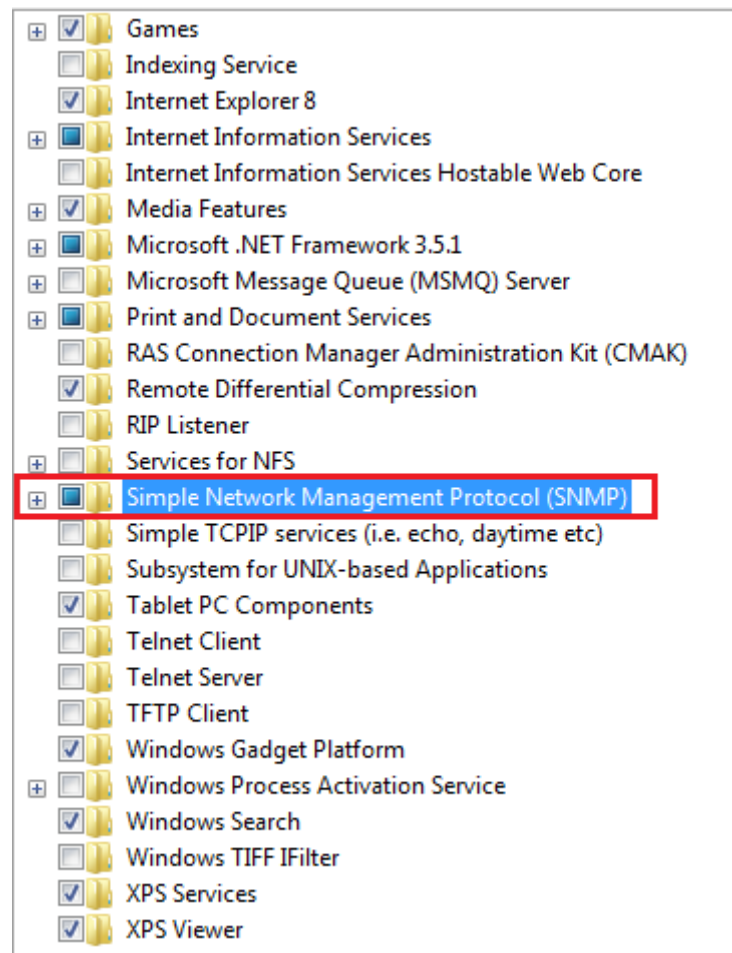
Step 3: Select “Turn Windows features on or off”



Step 4: Select IIS feature as follow

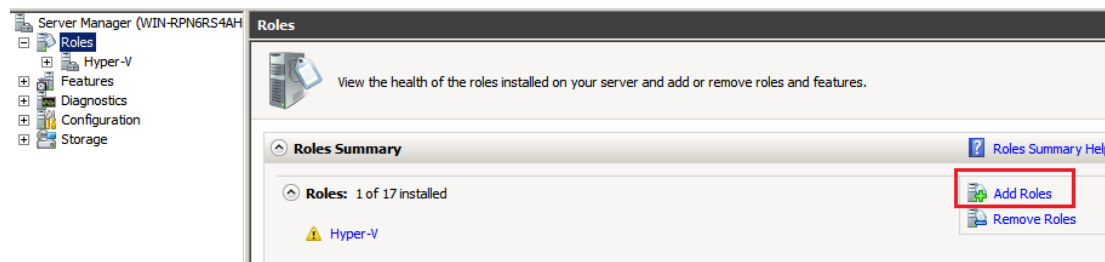


Step 5: Enable “SNMP” then press “OK” button

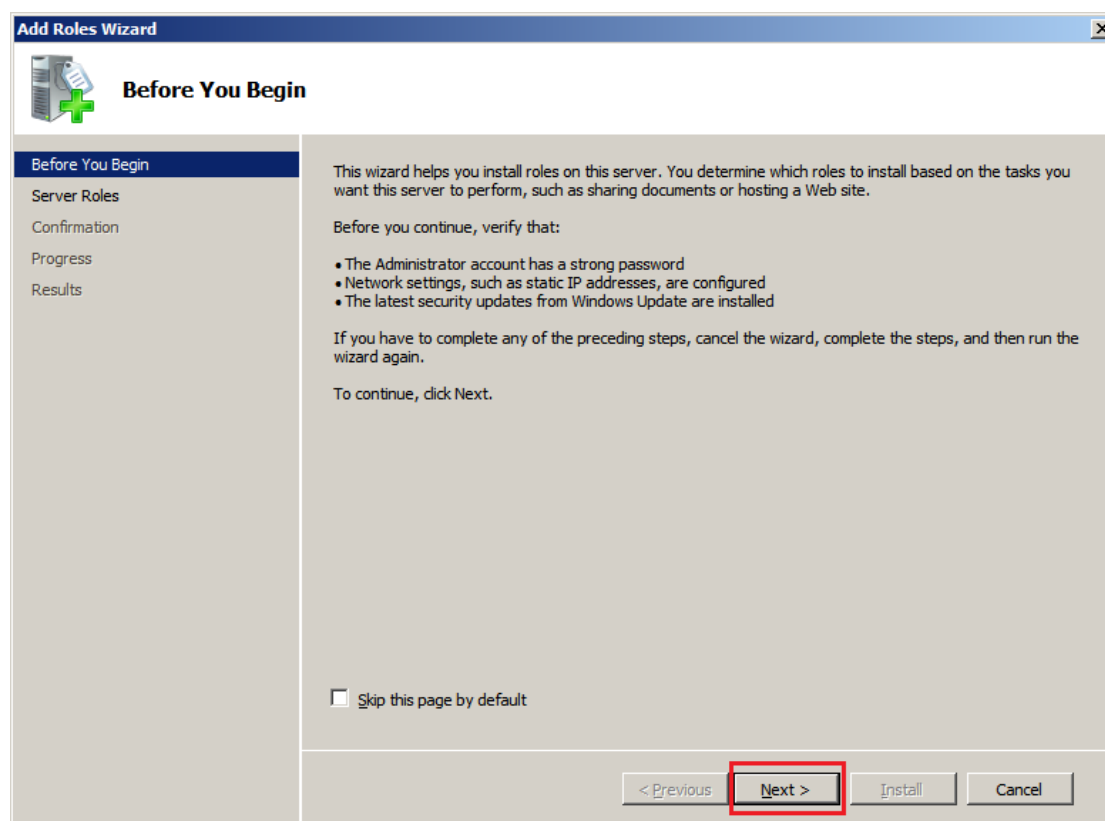


1.2 Windows 2008 R2

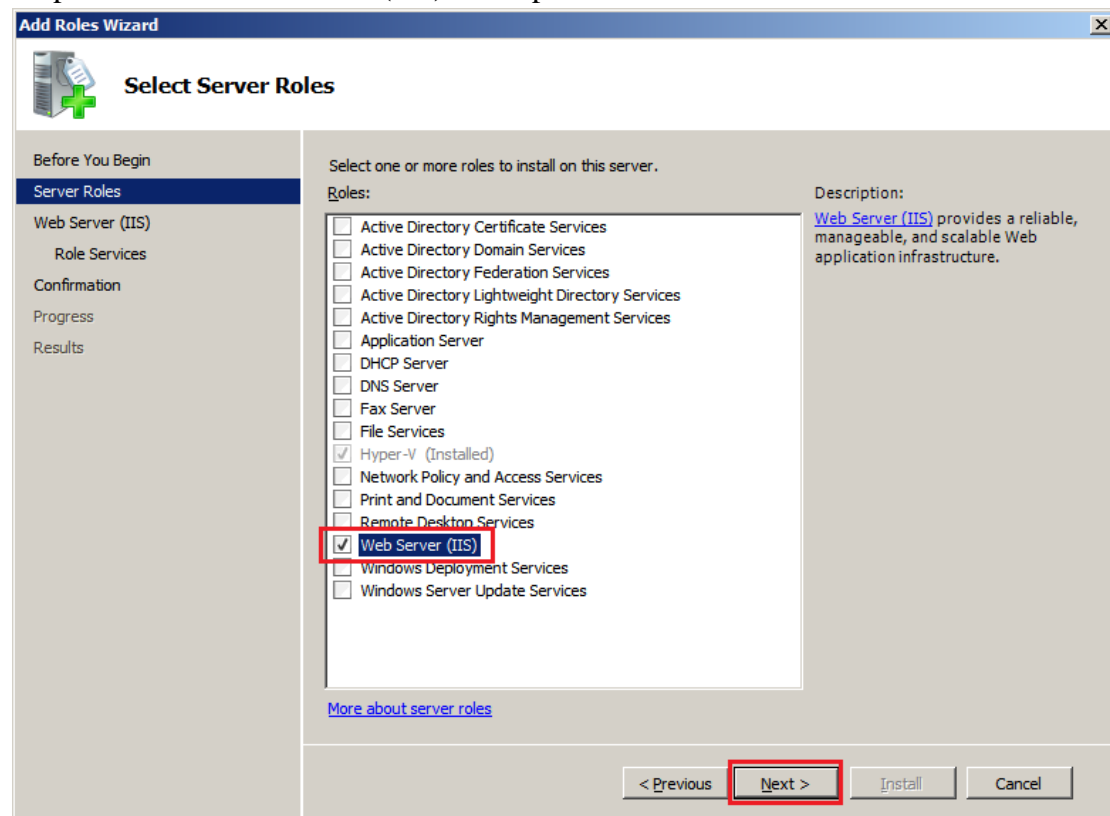
Step 1: Select “Roles” then “Add Roles”



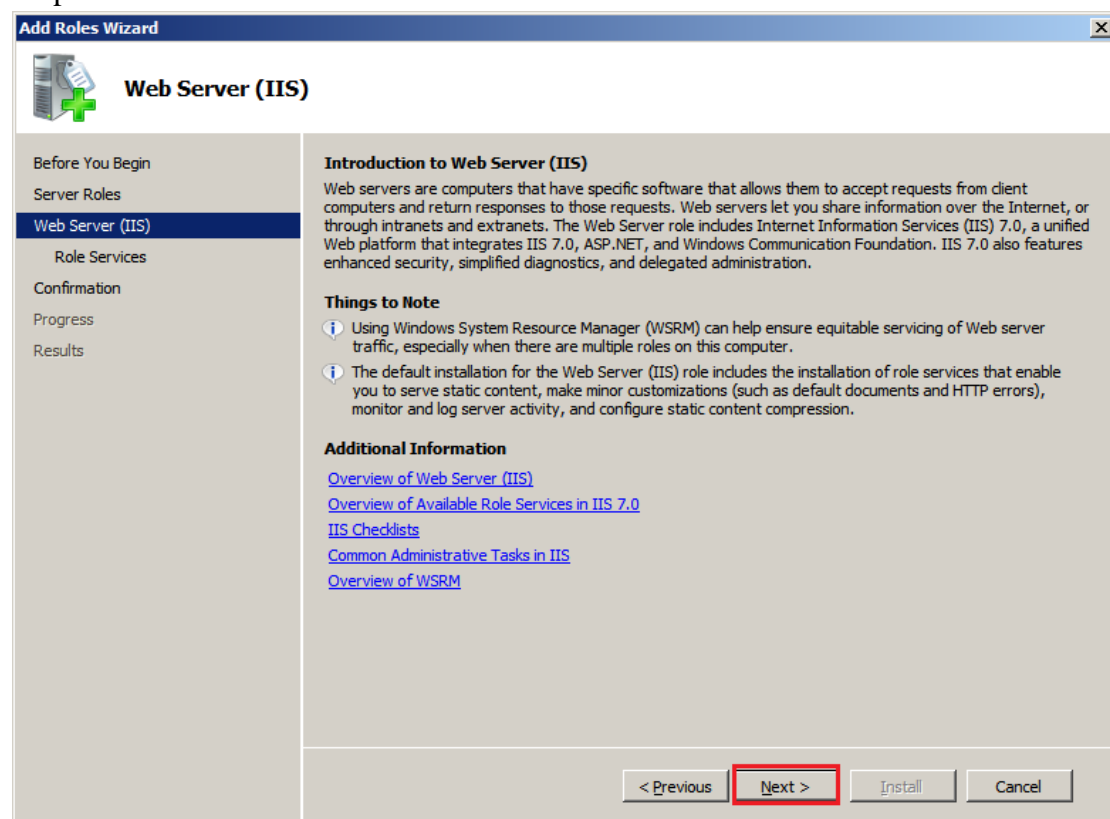
Step 2: Select “Next”



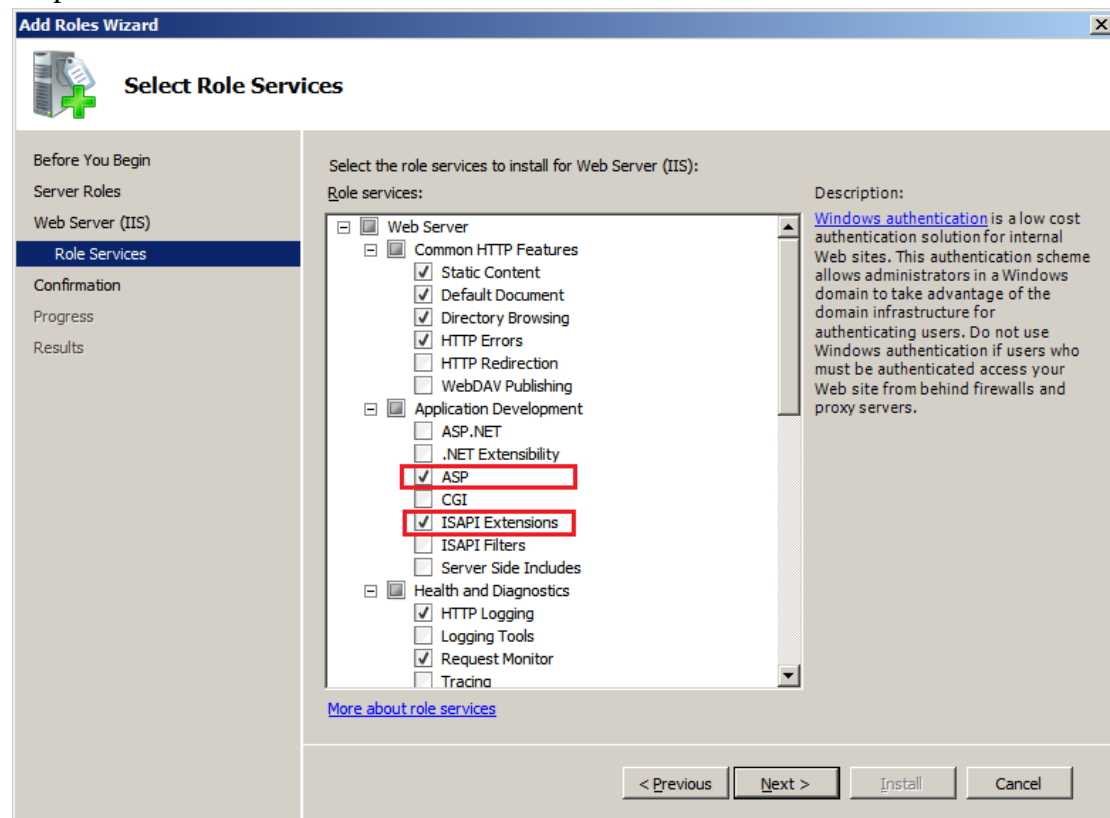
Step 3: Select “Web Server (IIS)” then press “Next”



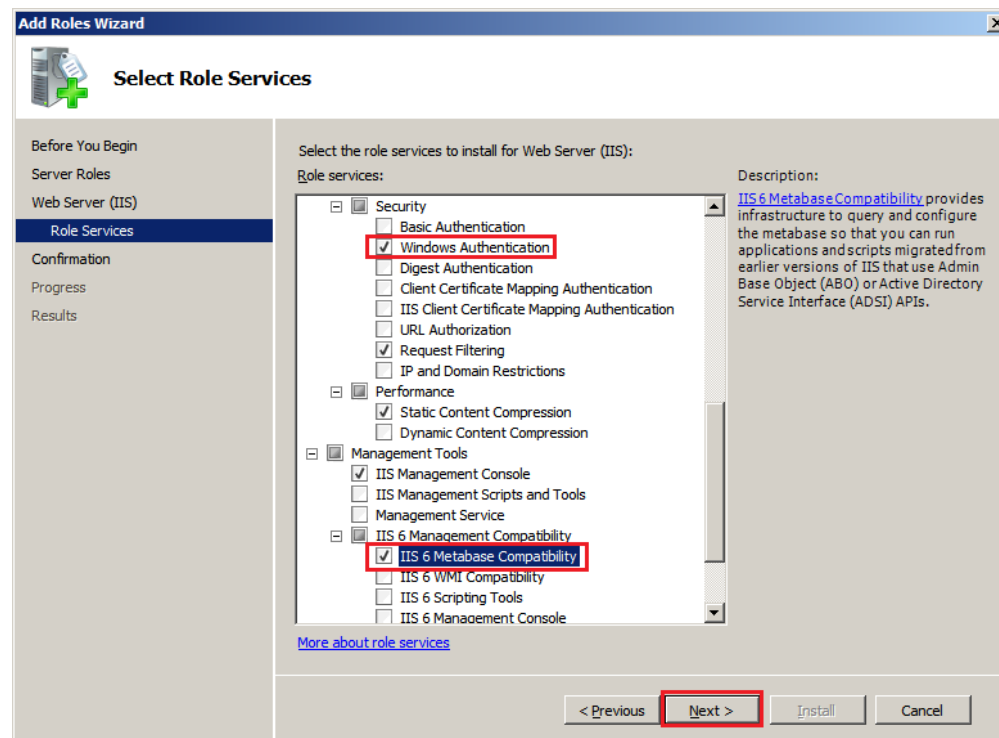
Step 4: Select “Next”



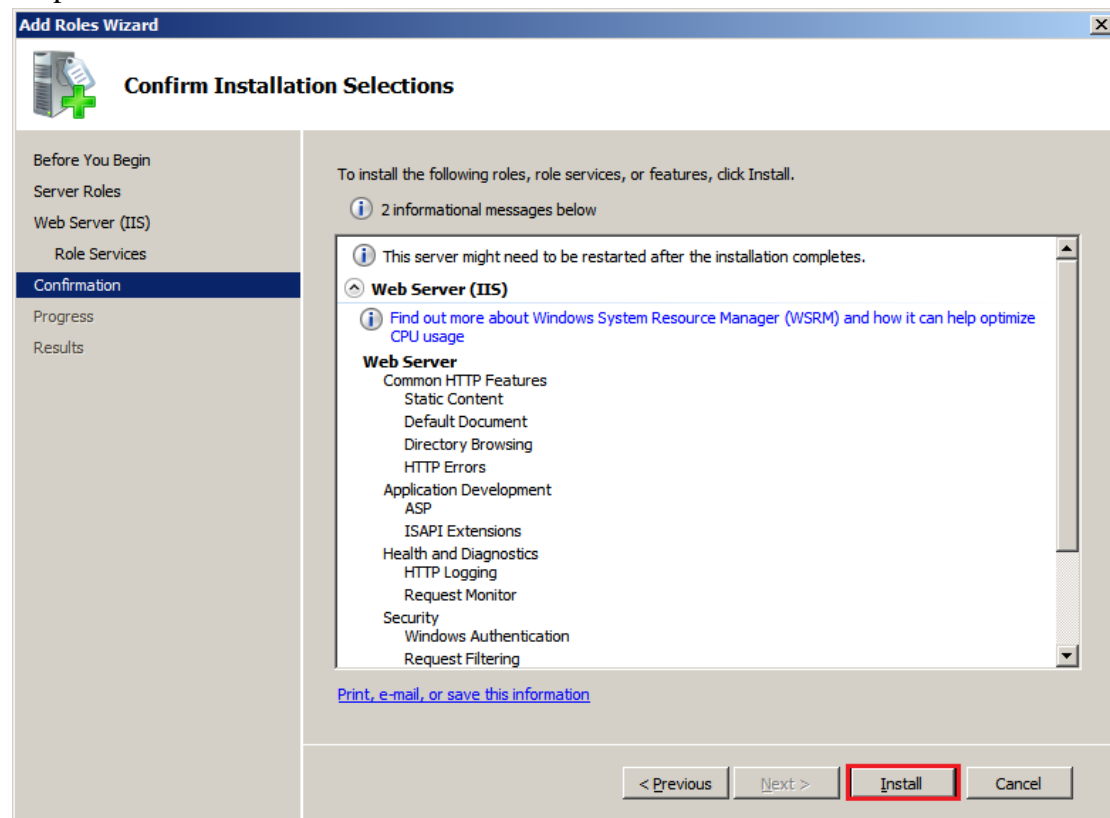
Step 5: Select “ASP” and “ISAPI Extensions”



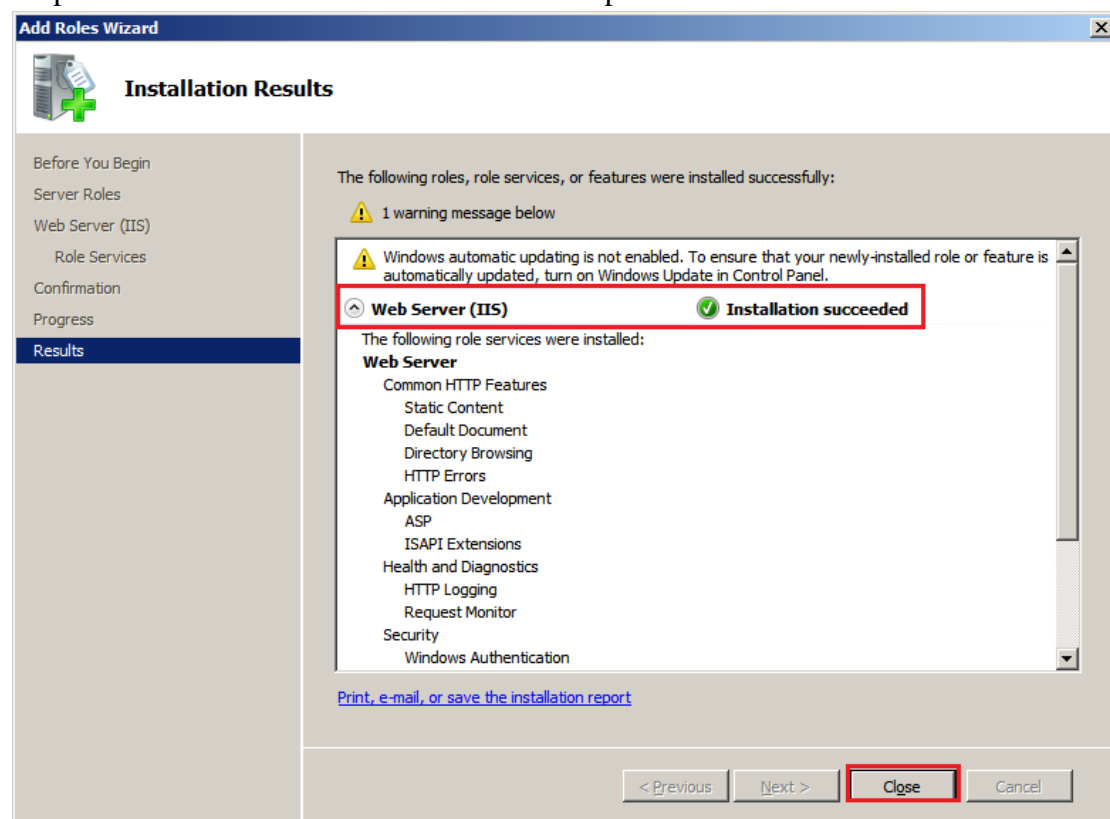
Step 6: Select “Windows Authentication” and “IIS 6 Metabase Compatibility” then press “Next”



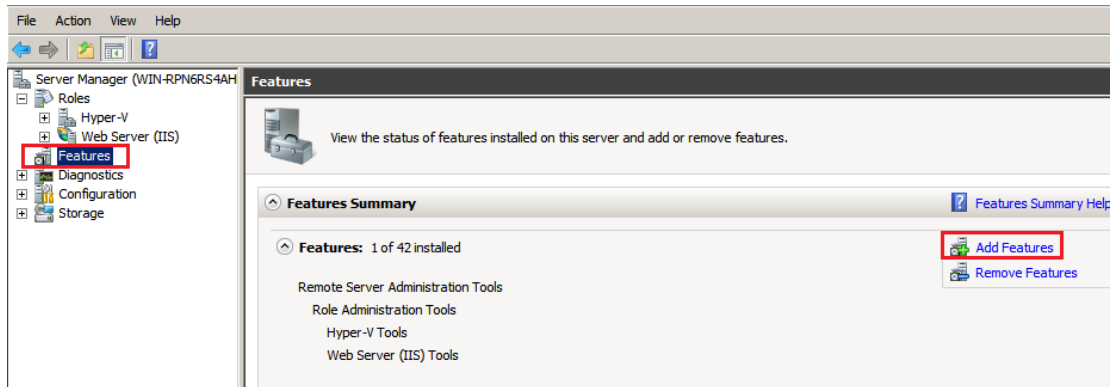
Step 7: Select “Install”



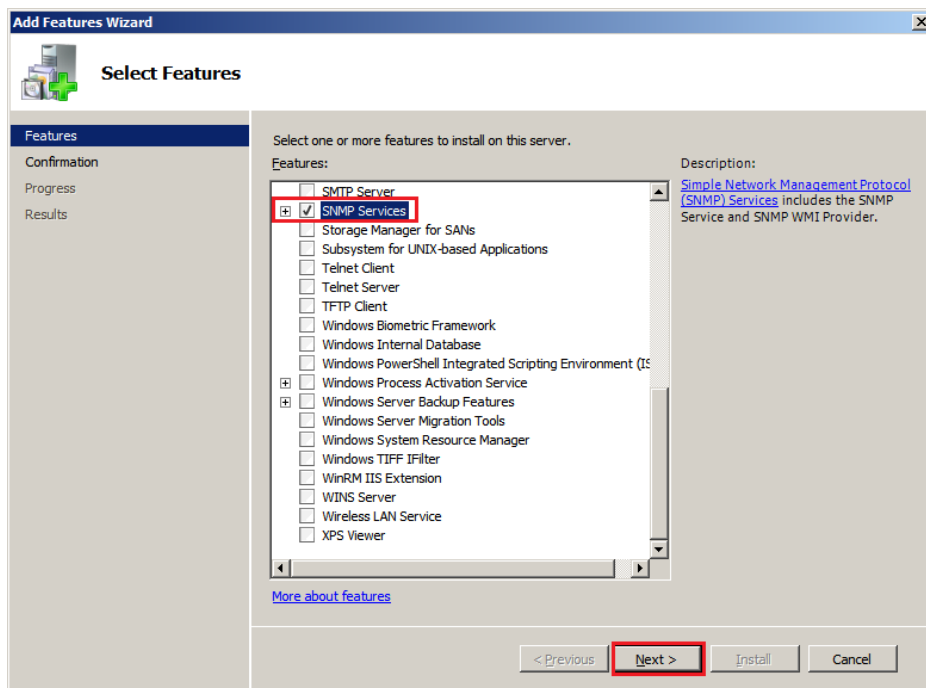
Step 8: Check “Installation succeeded” then press “Close”



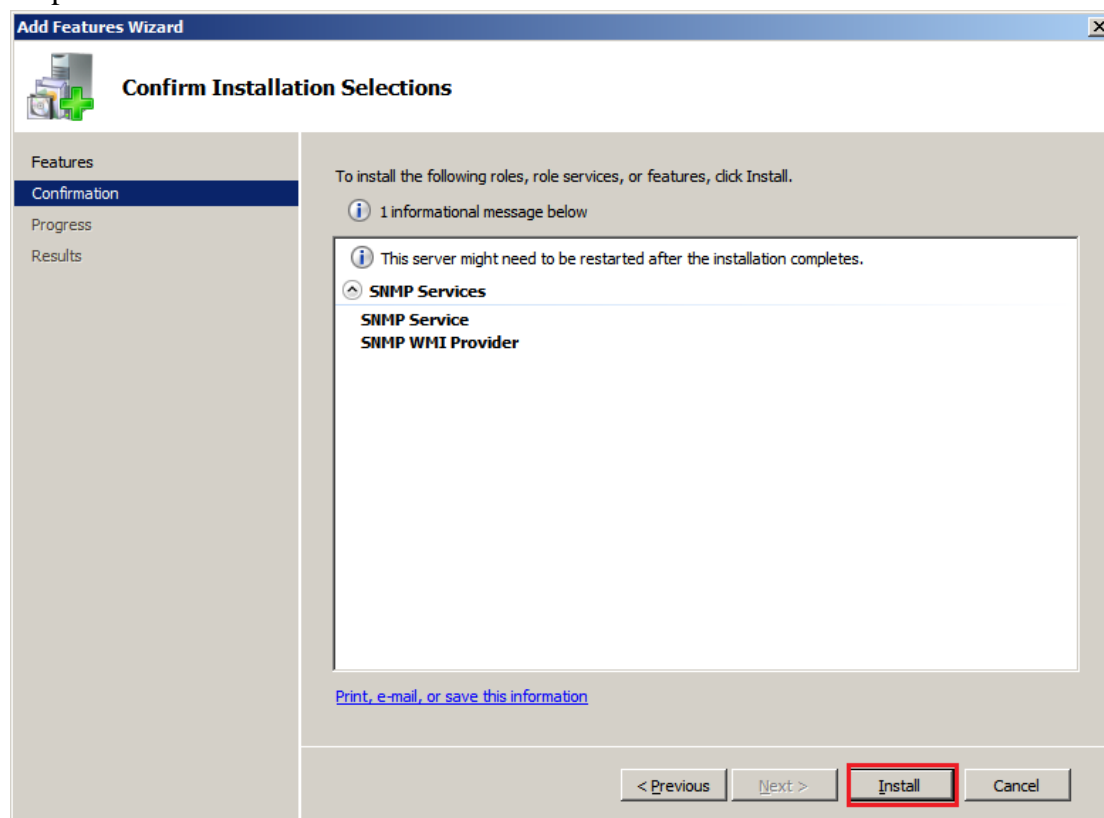
Step 9: Select “Features” then “Add Features”



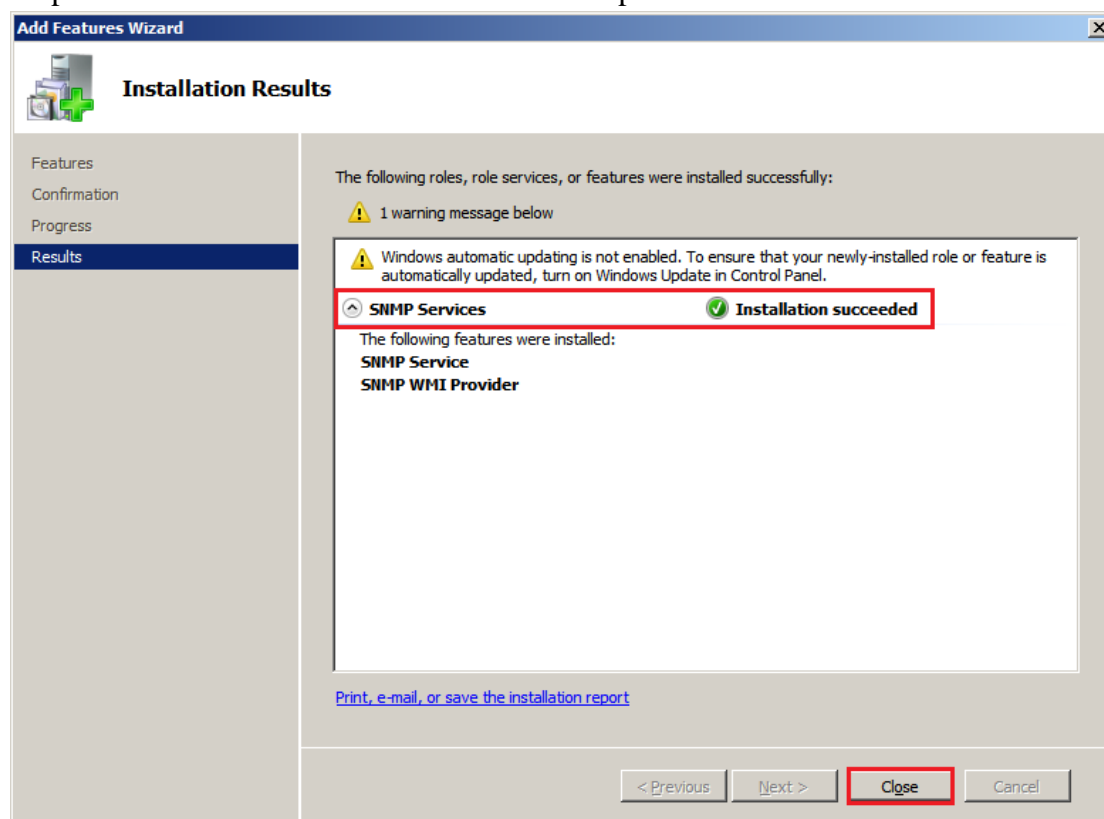
Step 10: Select “SNMP Services” then press “Next”



Step 11: Select “Install”



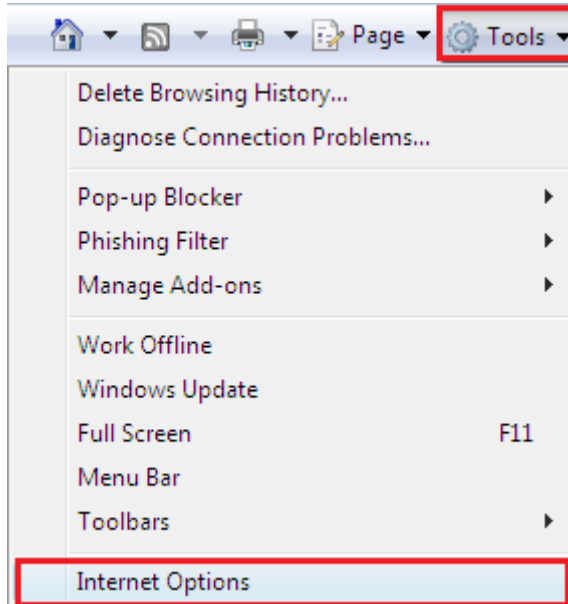
Step 12: Check “Installation succeeded” then press “Close”



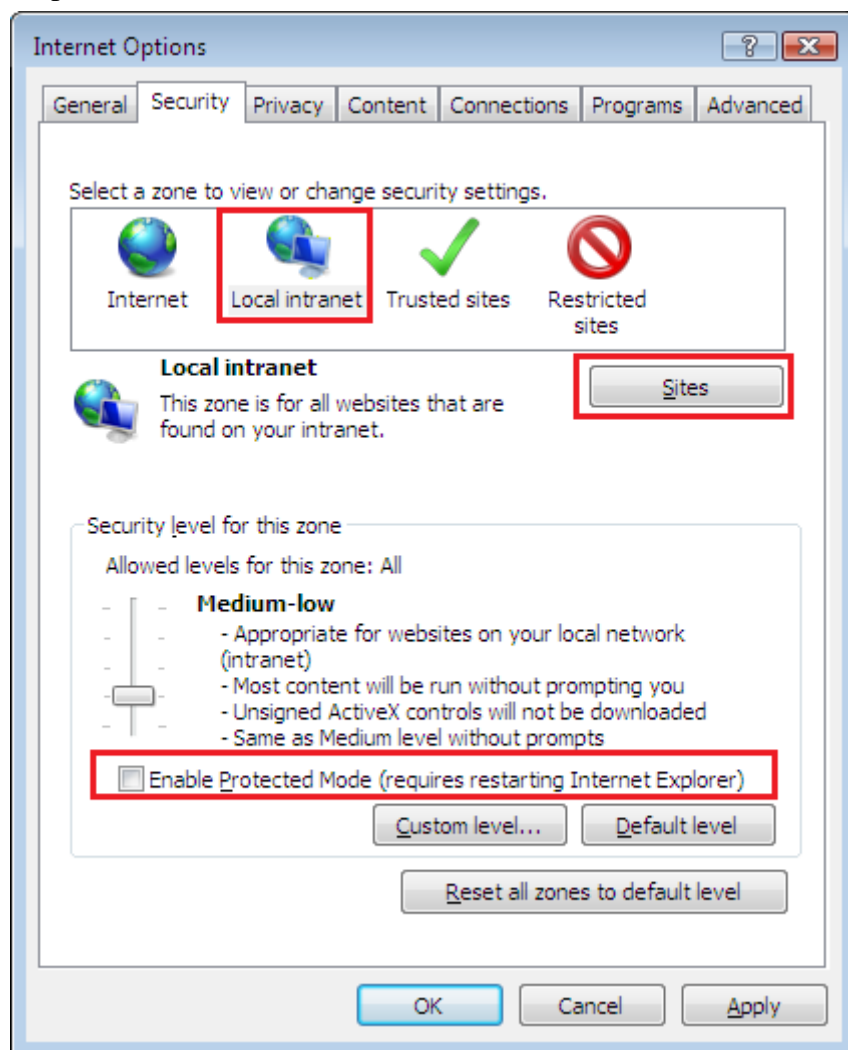
Chapter 2 – IE Setting for Windows 7 / Vista

2.1 IE setting for localhost login

Step 1: Select “Tools” => “Internet Options”



Step 2: Cancel “Enable Protected Mode” checkbox of “Local intranet”



Step 3: Enable “Include all local sites not listed in other zones”

