






Installing Fusion Block System accessory

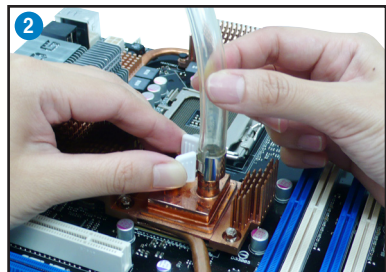
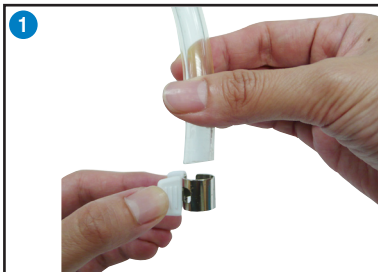
Install your watercooling system to the motherboard using the bundled accessories to obtain the best thermal solution.

Package contents

		
3/8" ID tubes x 2	1/2" to 3/8" ID fittings x 2	10mm to 3/8" ID fittings x 2
		
1/2" ID tube clips x 2	3/8" ID tube clips x 6	

For watercooling system with 3/8" ID tubes

1. Firmly press a tube clip and fit the tube into the clip.
2. Press the clip and connect the tube to the waterblock. When done, release the clip to tighten the two together.
3. Repeat Step 1 and 2 for another tube. Make sure that both tubes are well connected to prevent leak, and then fill the coolant into the reservoir.



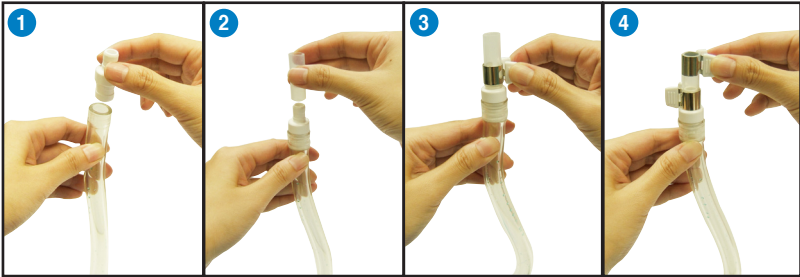
For watercooling system with 1/2" or 10mm ID tubes

1. Insert a fitting (1/2" to 3/8" ID or 10mm to 3/8" ID) into the tube.



Your watercooling system may come with tube clips. Use the clips to fasten the fittings and the tubes together.

2. Connect a supplied 3/8" ID tube to the fitting.
3. Firmly press a tube clip and hitch it to the bottom end of the 3/8" ID tube.
4. Press another clip and hitch it to the top end of the 3/8" ID tube.



5. Press the clip and connect the assembled tube to the waterblock. When done, release the clip to tighten the two together.
6. Repeat Step 1 to 5 for another tube. Make sure that both tubes are well connected to prevent leak, and then fill the coolant into the reservoir. The picture shows a watercooling system installed to the motherboard.

