

# ASUS ROG iDirect Quick Configuration Guide

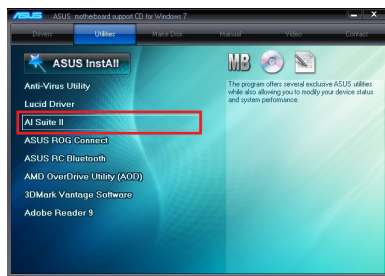
ASUS ROG iDirect provides a user-friendly interface for you to overclock or monitor your computer wirelessly and in real-time using your Apple® iPhone and iPad. Follow the instructions below to set up Bluetooth, USB cable or WiFi connection between your computer and iPhone/iPad.



- ASUS ROG iDirect supports ASUS ROG motherboards with the onboard RC Bluetooth device or ASUS motherboards with a 3rd-party bluetooth dongle installed.
- For iPad users, use ASUS ROG iDirect through Wifi connection.

## Setting up Bluetooth connection

- Install **AI Suite II** to your computer from your motherboard support DVD and reboot.



- Search **ROG iDirect** within **App Store** and install it to your iPhone.



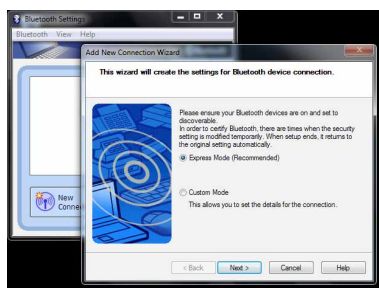
- On your iPhone, tap **Settings > General > Network > Internet Tethering**. Enable **Internet Tethering** and tap **Turn on Bluetooth** when a dialog box appears.



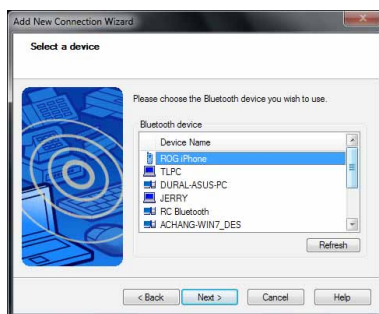
- Return to **General > Bluetooth**. Stay at this page for later PIN entering and pairing.



- On your computer, launch **Bluetooth Settings** from the Windows desktop. Click **New Connection** to launch **Add New Connection Wizard**. Select **Express Mode** and click **Next**.

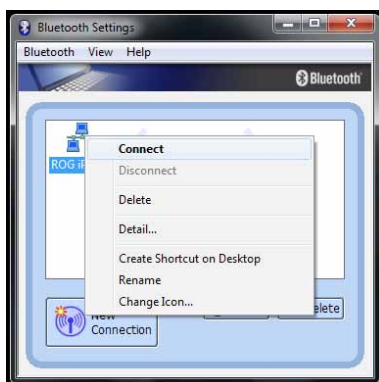


- Your iPhone should be detected by your computer now. Select **ROG iPhone** (may be labeled as your iPhone's name) and click **Next**.



- The system will add your iPhone to your remote device list.

8. Right-click **ROG iPhone** (may be labeled as your iPhone's name) and select **Connect**.



9. Enter **PIN** on your iPhone and tap **Done**. Enter the same **PIN** on your computer and click **Pair** to start the connection. When pairing succeeds, the name of the PC will be shown in the Devices list.



Ensure that you see **Internet Tethering** on the top of your iPhone. If not, repeat the previous steps to rebuild the connection.

10. Click **Yes** to allow the device to connect.



11. Windows Firewall may block the Bluetooth connection. Click **Allow access** to complete the connection.



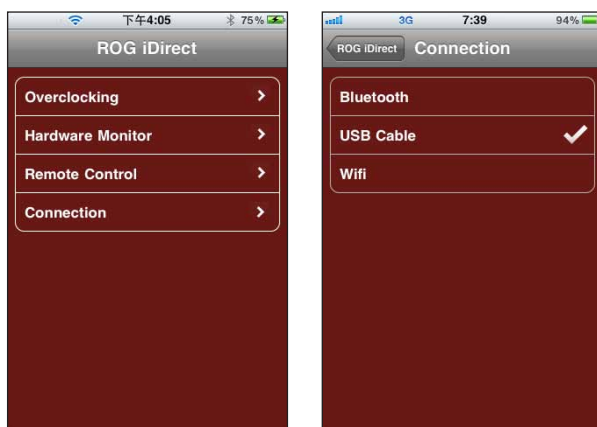
The Bluetooth connection screens may vary with your operating system version and Bluetooth-enabled devices.

## Setting up USB connection

1. Ensure that you have installed iTunes to your computer and ROG iDirect to your iPhone/iPad.
2. Connect the USB cable to your computer and iPhone/iPad.
3. On your iPhone, tap **Settings > General > Network > Internet Tethering**. Enable **Internet Tethering** and tap **USB Only** when a dialog box appears.



4. Tap **ROG iDirect** in your iPhone/iPad to start the application.
5. Tap **Connection** and select **USB cable**.

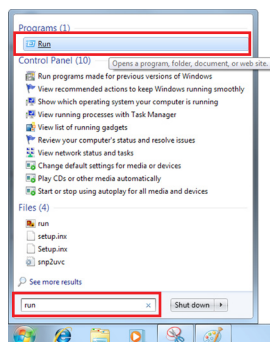


## Setting up Wifi connection

1. Ensure that your computer has connected to the internet.
2. Click Windows icon, type **run** in the search field and click **Run** on the top.



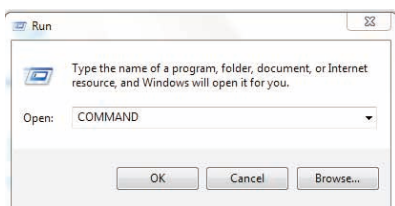
Click **Run** directly if you use Windows XP operating system.



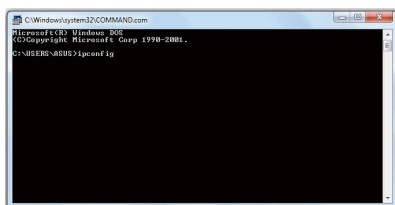
3. Type **Command** in the **Open** field and click **OK**.



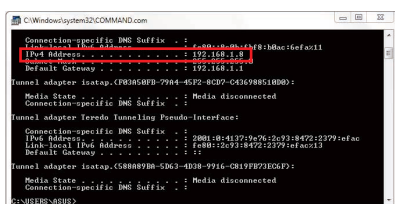
Type **CMD** in the Open field if you use Windows XP operating system.



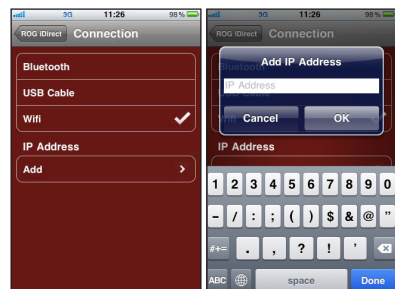
4. Type the command **ipconfig** and press **<Enter>**.



5. Locate and write down the **IPv4 Address**.



6. Tap **ROG iDirect** in your iPhone/iPad to start the application.
7. Tap **Connection** and select **Wifi**.
8. Tap **Add** and enter the **IPv4 Address** of your computer.
9. Tap **OK** to build the Wifi connection.



## Controlling your computer with iPhone

With a Bluetooth/USB/Wifi connection, you are free to control your computer with your iPhone/iPad.

1. Tap **ROG iDirect** in your iPhone to start the application.
2. You are able to overclock, monitor, and remotely control your hardware system.



### Overclocking

There are **Basic** and **Advanced** items available for adjustment. Tap an item and select your desired value for overclocking.



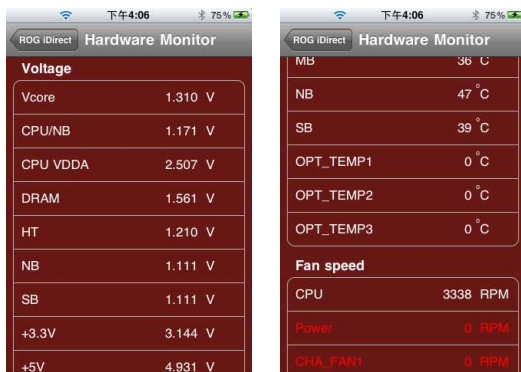
#### Basic mode

#### Advanced mode

#### Value selection

### Hardware Monitoring

You can monitor all the voltages, temperatures and fan speeds in real time.

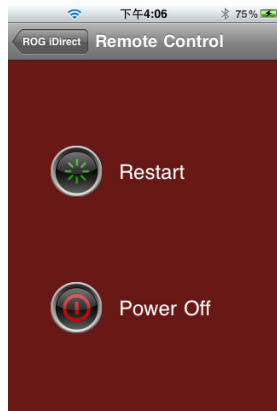


#### Voltage

#### Temperature and Fan speed

## Remote controlling

You can restart or shut down your computer with your iPhone.



## Connection building

You can set up the connections of your computer with your iPhone, including Bluetooth, USB cable and Wifi. Refer to the previous pages for connection building instructions.



- Ensure to activate the Bluetooth function on your iPhone and your PC before using ROG iDirect.
- Ensure to install iTunes to your computer when you choose to connect through a USB cable.



- The screenshots shown in this manual are for reference purposes only, and may not exactly match what you see on your iPhone or iPad.
- Please download and install the latest version of ROG iDirect from App store.



Inspiring Innovation • Persistent Perfection  
[www.asus.com](http://www.asus.com)



1 5 6 0 6 2 3 8 3 0 0 0

C17001

