

ASUS ROG iDirect Quick Configuration Guide

ASUS ROG iDirect provides a user-friendly interface for you to overclock or monitor your computer wirelessly and in real-time using your Apple® iPhone and iPad. Follow the instructions below to set up Bluetooth, USB cable or WiFi connection between your computer and iPhone/iPad.



- ASUS ROG iDirect supports ASUS ROG motherboards with the onboard RC Bluetooth device or ASUS motherboards with a 3rd-party bluetooth dongle installed.
- For iPad users, use ASUS ROG iDirect through Wifi connection.

Setting up Bluetooth connection

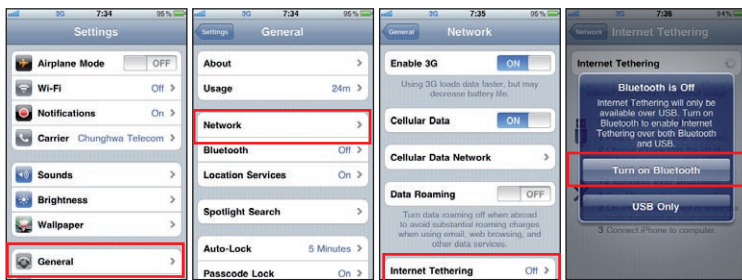
1. Install **AI Suite II** to your computer from your motherboard support DVD and reboot.



2. Search **ROG iDirect** within **App Store** and install it to your iPhone.



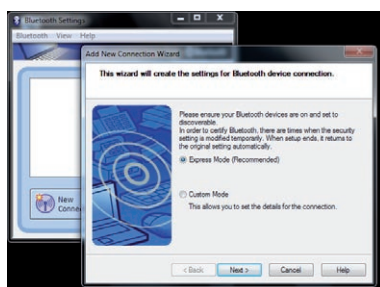
3. On your iPhone, tap **Settings > General > Network > Internet Tethering**. Enable **Internet Tethering** and tap **Turn on Bluetooth** when a dialog box appears.



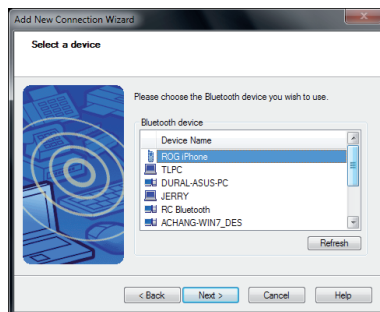
4. Return to **General > Bluetooth**. Stay at this page for later PIN entering and pairing.



5. On your computer, launch **Bluetooth Settings** from the Windows desktop. Click **New Connection** to launch **Add New Connection Wizard**. Select **Express Mode** and click **Next**.

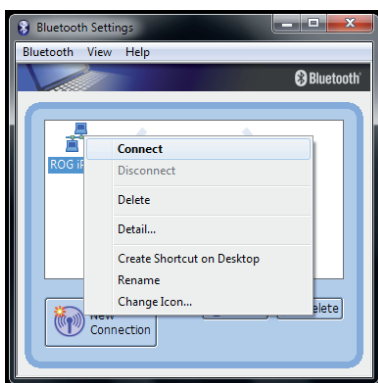


6. Your iPhone should be detected by your computer now. Select **ROG iPhone** (may be labeled as your iPhone's name) and click **Next**.



7. The system will add your iPhone to your remote device list.

8. Right-click **ROG iPhone** (may be labeled as your iPhone's name) and select **Connect**.

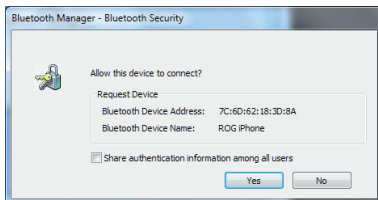


9. Enter **PIN** on your iPhone and tap **Done**. Enter the same **PIN** on your computer and click **Pair** to start the connection. When pairing succeeds, the name of the PC will be shown in the Devices list.

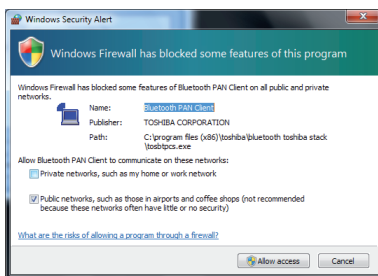


Ensure that you see **Internet Tethering** on the top of your iPhone. If not, repeat the previous steps to rebuild the connection.

10. Click **Yes** to allow the device to connect.



11. Windows Firewall may block the Bluetooth connection. Click **Allow access** to complete the connection.



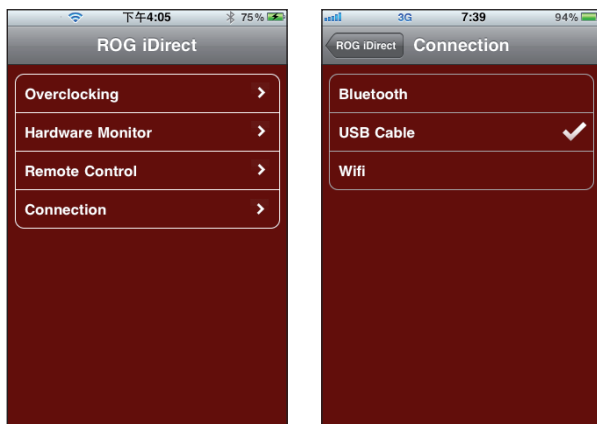
The Bluetooth connection screens may vary with your operating system version and Bluetooth-enabled devices.

Setting up USB connection

1. Ensure that you have installed iTunes to your computer and ROG iDirect to your iPhone/iPad.
2. Connect the USB cable to your computer and iPhone/iPad.
3. On your iPhone, tap **Settings > General > Network > Internet Tethering**. Enable **Internet Tethering** and tap **USB Only** when a dialog box appears.



4. Tap **ROG iDirect** in your iPhone/iPad to start the application.
5. Tap **Connection** and select **USB cable**.

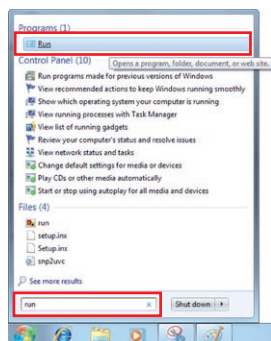


Setting up Wifi connection

1. Ensure that your computer has connected to the internet.
2. Click Windows icon, type **run** in the search field and click **Run** on the top.



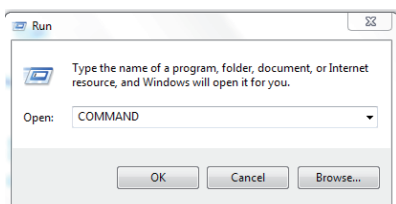
Click **Run** directly if you use Windows XP operating system.



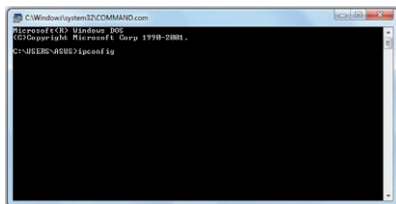
3. Type **Command** in the **Open** field and click **OK**.



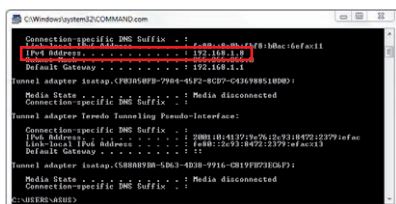
Type **CMD** in the Open field if you use Windows XP operating system.



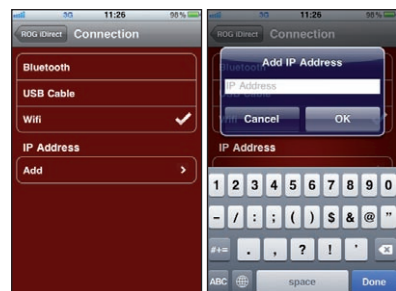
4. Type the command **ipconfig** and press **<Enter>**.



5. Locate and write down the **IPv4 Address**.



6. Tap **ROG iDirect** in your iPhone/iPad to start the application.
7. Tap **Connection** and select **Wifi**.
8. Tap **Add** and enter the **IPv4 Address** of your computer.
9. Tap **OK** to build the Wifi connection.



Controlling your computer with iPhone

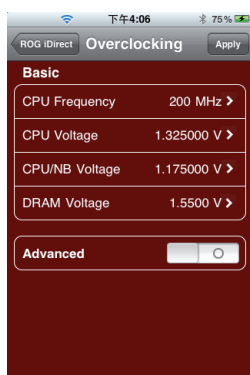
With a Bluetooth/USB/Wifi connection, you are free to control your computer with your iPhone/iPad.

1. Tap **ROG iDirect** in your iPhone to start the application.
2. You are able to overclock, monitor, and remotely control your hardware system.

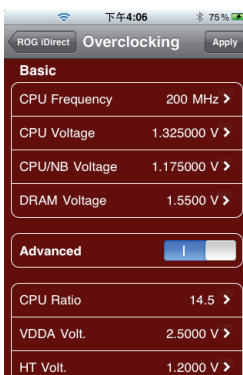


Overclocking

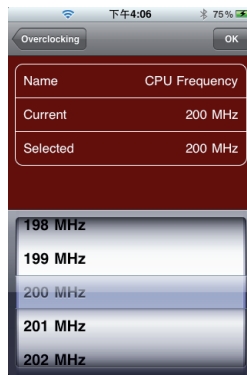
There are **Basic** and **Advanced** items available for adjustment. Tap an item and select your desired value for overclocking.



Basic mode



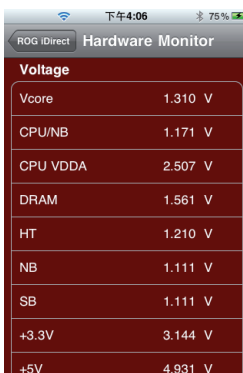
Advanced mode



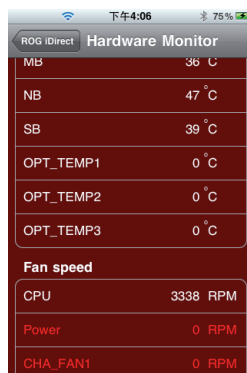
Value selection

Hardware Monitoring

You can monitor all the voltages, temperatures and fan speeds in real time.



Voltage



Temperature and Fan speed

Remote controlling

You can restart or shut down your computer with your iPhone.



Connection building

You can set up the connections of your computer with your iPhone, including Bluetooth, USB cable and Wifi. Refer to the previous pages for connection building instructions.



- Ensure to activate the Bluetooth function on your iPhone and your PC before using ROG iDirect.
- Ensure to install iTunes to your computer when you choose to connect through a USB cable.



Inspiring Innovation • Persistent Perfection

www.asus.com

