

Turbo Unlocker instruction

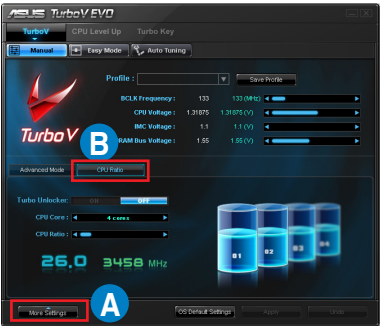
Specially-designed for Intel® unlocked processors, ASUS exclusive Turbo Unlocker allows dynamic and automatic CPU core adjustments and provides extra performance based on system workload. Follow the instructions below to enable Turbo Unlocker and unleash the full power of your system.

- 1. Install ASUS TurboV EVO from the support DVD that came with the motherboard package and launch TurboV EVO.
- 2. In the ASUS TurboV EVO window, click **More Settings** (step A), and then click **CPU Ratio** (step B).

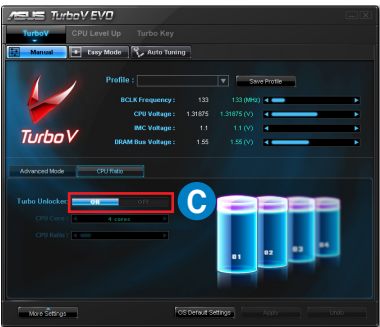
- 3. When Turbo Unlocker is set to **OFF** by default, the CPU works following the BIOS settings. You may manually assign the maximum CPU core ratio when the system is running on 1 core to 4 cores.



- The available CPU cores varies with CPU models.
- The individual CPU cores will be activated or deactivated automatically depending on system workload and application support.



- 4. Click **ON** (step C) to enable Turbo Unlocker. Turbo Unlocker will dynamically and automatically adjust CPU core ratios and provide extra performance based on system workload.



- 5. You can also fast enable or disable Turbo Unlocker by clicking the Turbo Unlocker widget on the bottom-right corner of the Windows desktop. The widget also monitors the current CPU core ratio in real-time.

