

5.3.4 ASUS AI Direct Link


ASUS AI Direct Link allows you to form a computer-to-computer network via a network cable to share files with high transfer rate. You must first connect the computer equipped with this motherboard to another computer supported by Gigabit Ethernet controller using a network cable, and then install the utility to both computers to avail the AI Direct Link feature.



Turn off your firewall software other than Windows Firewall before launching AI Direct Link.

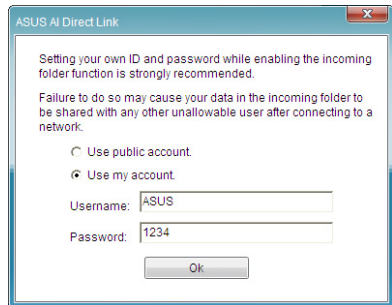
Using AI Direct Link

To enable the incoming folder:

1. From the Windows® taskbar, right click on the AI Direct Link icon  and select **Incoming folder > Enable incoming folder**.
2. If you want to verify the incoming user, select **Use my account** and set your username and password. Otherwise, select **Use public account**.



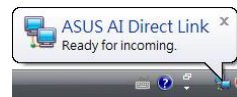
For security's sake, it is recommended that you set a username and password.



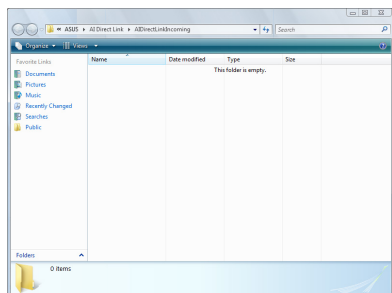
3. Click **OK** and the “Ready for incoming” message appears.



To disable the incoming folder, select **Incoming folder > Disable incoming folder**.



4. Right click on the AI Direct Link icon and select **Incoming folder > Open incoming folder**. The **AI Direct Link Incoming** folder opens. Put the files you want to share into this folder. The authorized user has full access to this folder.

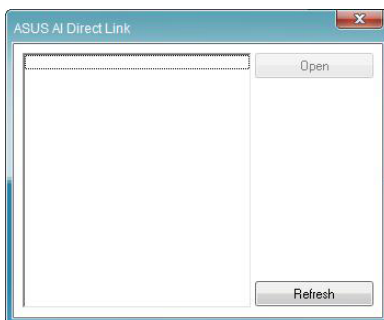




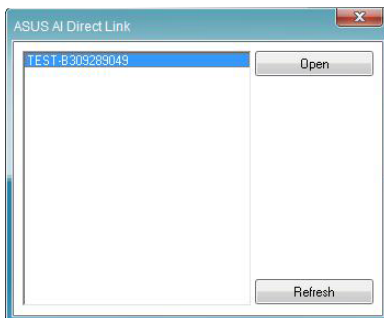
- You can change the location of the AIDirectLinkIncoming folder only when you disable the incoming folder.
- The default path of the AIDirectLinkIncoming folder is C:\Program Files\ASUS\AI Direct Link. To change its location, select **Incoming folder > Change incoming folder** to open the system directories and move the AIDirectLinkIncoming folder under another directory.

To connect to another computer:

1. From the Windows® taskbar, right click on the AI Direct Link icon and select **Connect**. The following screen displays.
2. Click **Refresh**. The software starts searching for the connected computer.



3. The name of the computer found is listed. Click **Open** to open its shared folder.



4. If necessary, enter the authorized username and password. Click **OK** to log in and have full access to this shared folder.

