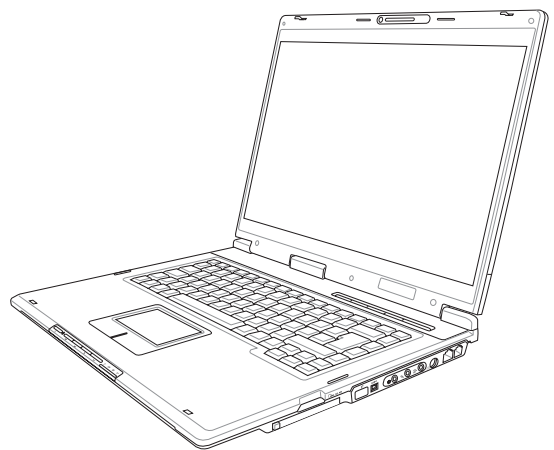
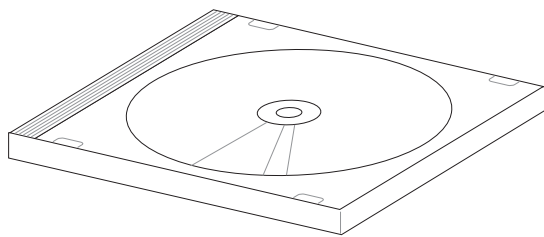


Notebook PC

Drivers and Utilities

User's Manual



E1824b / Feb 2005

Table of Contents

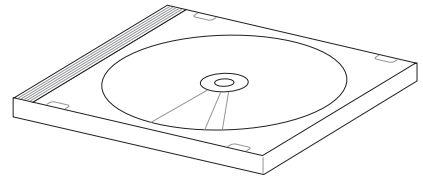
Support CD for Microsoft Windows	5
New Operating System Installation	5
Drivers for Microsoft Windows	5
Device Manager	10
VGA Driver	13
VGA Driver Setup (Model 1 – Intel)	14
VGA Driver Setup (Model 2 – ATI)	15
VGA Driver Setup (Model 3 – SiS)	16
ATK0100 Driver (ACPI)	18
ATK0100 Driver Setup	20
Audio	21
CMOS Camera	22
Audio Setup	23
Camera Driver Setup	24
Using the Camera	25
Microsoft Windows	25
GameFace Enhanced Display Driver	26
INF Update (Intel)	28
GameFace Driver Setup (selected models)	29
INF Update Driver Setup	31
INTEL Callexico (Wireless LAN)	31
Wireless LAN Driver Setup - Callexico2 (ABG)	32
Wireless LAN Driver Setup - Callexico2 (2200BG)	33
Wireless LAN Utility Introduction	33
Wireless LAN Utility Introduction	34
ASUS Wireless LAN	34
ASUS WLAN Driver Setup	36
ASUS WLAN Utility Setup	37
ASUS WLAN Utility Quick Start	38
LAN	41
LAN Driver Setup	42
Configuring your LAN	43
Joining a Domain or Workgroup (Windows XP)	43
Viewing Your Network	45

Modem	46
Modem Driver Setup	48
Modem Configuration	48
RICOH	50
Ricoh Driver Setup	52
ChkMail	54
ChkMail Setup	56
GameFace	56
Getting Started	58
Launch GameFace	58
GameFace Utility	59
GameFace Setting	60
Launch Game And Show GameFace	60
Local Playback Mode	61
Network Playback Mode	61
Waiting for connection:	61
Frequently Asked Questions	63
LiveUpdate	64
LiveUpdate Setup	66
Using LiveUpdate	67
Norton Internet Security	69
Norton Internet Security Setup	70
Internet Proxy Settings	72
Internet Security Main window	73
Internet Security Features	74
Power4 Gear	74
Power4 Gear Setup	76
Benefits of Power4 Gear	77
Power4 Gear Interface	77
Program Icons	78
Power4 Gear	79
Renaming Settings	79
Power4 Gear Configuration	79
Power Saving Details	80
NB Probe	81
NB Probe Setup	82
Using NB Probe	83
Starting NB Probe	83
Using NB Probe Monitoring	84

TouchPad	87
Touchpad Setup	88
Synaptics® TouchPad Features	89
Tap on the Pad Instead of Pressing the Buttons	89
Drag Icons, Windows and Other Objects without Using Buttons	89
Adjust the Overall Touch Sensitivity	90
Customize Buttons and Taps	90
Prevent Accidental Pointing While Typing	91
Scroll Through A Document without Using Scroll Bars	91
Zoom In/Out and Pan on Documents	91
Move the Pointer Long Distances	92
Fine Tune the Pointer Movement	92
Accessories	92
More About the TouchPad	92
Property Pages	92
Scrolling Properties Page	93
Tap Zones Properties Pages	94
More Features Properties Page	95
Button Actions Properties Page	96
Touch Properties Page	97
Edge Motion Properties Page	98
Frequently Asked Questions	99
Video Security	101
WinFlash	102
Video Security Setup	103
WINFLASH Setup	105
Using WINFLASH	105

Support CD for Microsoft Windows

The Notebook PC you purchased may or may not be preloaded with an operating system. The support CD included with this Notebook PC provides all the necessary drivers and utilities in order for you to use your Notebook PC with Microsoft® Windows® XP (referred to as “Windows” in this User’s Manual).



The levels of hardware and software support may vary depending on the installed operating system. Operating systems not pre-installed on this Notebook PC may produce different results than the ones described in the provided user’s manuals.

If your Notebook PC is not preloaded with any operating system, or you want to install another operating system other than the preloaded one, the following pages will give step-by-step installation procedures for typical system configurations under the Windows® operating system. For application usage, please see the online help provided with each of the applications after installation. The following are contents of a typical support CD. Variations may be found for each territory or language. If the autorun menu does not appear, double clicking the CD-ROM disc drive icon in “My Computer” (may be the (D:) drive or (E:) drive on hard drives with two partitions) or running SETUP.EXE (through Start menu “Run...”) located in the root of the support CD, will bring up the autorun menu.

New Operating System Installation

If you install a new operating system on your Notebook PC, there will be many hardware devices without drivers. Use the provided support CD to correct this problem.

Drivers for Microsoft Windows

Next page gives descriptions of each support CD item. Due to ongoing improvements in the support CD, there may be some differences between this User’s Manual and your support CD. The names in quotations are the actual driver names displayed in the System Properties of MS Windows. Windows cannot contain all the device drivers from every manufacturer, with every update; therefore the provided support CD will contain the best driver for your built-in devices and should be used in place of any Windows default drivers.

Some drivers may already be provided in Windows. If you have any problems with these drivers, visit the Microsoft Windows Update site. A link is provided in Microsoft Windows Explorer under “Tools.” The exact controller and driver will vary by model and territory.

Software Drivers

VGA (Display) (Driver depends on model)

“Intel(R) 82852/82855 GM/GME Graphics Controller” or “ATI MOBILITY RADEON 9200” or “SiS M760GX”

Installing the VGA driver first will make viewing other setup screens much easier. This installs display drivers for your operating system in order to properly use the Notebook PC’s built-in graphics controller and to provide optimal display features. Once the display driver is installed, you can change your display’s resolution and color through Display Properties.

This device is shown under Windows Device Manager “**Display adapters.**”

ATK0100 “ATK0100 ACPI UTILITY” Utility

This utility is required for special utilities provided in the support CD. This installs drivers for the Notebook PC’s Advanced Configuration and Power Interface (ACPI) for features utilizing power management functions.

This device is shown under Windows Device Manager “**System devices.**”

Audio “Realtek AC’97 Audio” Driver

This installs audio drivers for your operating system in order to properly use the Notebook PC’s built-in sound controller. All audio functions are configured through Windows and help can be located within Windows documentation or Windows help files.

This device is shown under Windows Device Manager “**Sound, video and game controllers.**”

CMOS Camera “BisonCam, USB2.0” (on selected models)

Installs a camera driver in order to enable the optional built-in camera on top of the LCD panel.

This device is shown under Windows Device Manager “**Imaging devices.**”

GameFace Enhanced Display Driver (on selected models)

Installs **GameFace** driver. GameFace lets you talk to and see your friend on the remote computer (video conferencing) even when you are playing a full-screen game.

INF Update

This installs Windows support files for advanced features in new chipsets.

Intel Calexico2 / ASUS WLAN (Depends on model)

“Intel(R) PRO/Wireless 2200BG Network Connection” or “ASUS WLAN” Driver

Required on models with internal wireless LAN. Installs the required network driver for the Notebook PC’s optional internal wireless LAN controller. If you purchased the optional internal wireless LAN, you need to install this driver. If you did not purchase the optional internal wireless LAN, you cannot install this driver.

This device is shown under Windows Device Manager “**Network Adapters.**”

LAN “Realtek RTL8139/810x Family Fast Ethernet NIC” Driver

Installs the required LAN driver for the Notebook PC’s built-in PCI Fast-Ethernet controller. Fast-Ethernet supports both 10 Base-T or 100 Base-TX networks at half or full duplex.

This device is shown under Windows Device Manager “**Network Adapters.**”

Modem “AC97 SoftV92 Data Fax Modem with SmartCP” Driver

Installs the necessary driver in order for your operating system to have the correct files for the Notebook PC with built-in modem and drivers for integration with the internal audio. With third-party software, fax and speaker phone capabilities are possible using this Notebook PC.

This device is shown under Windows Device Manager “**Modems.**”

RICOH “Ricoh R/RL/5C476(II) or Compatible CardBus Controller” Driver

A version of this driver is provided by Microsoft in its Windows XP operating system. The support CD includes this driver called for added enhancements for Windows XP and other Windows versions.

This device is shown under Windows Device Manager “**PCMCIA adapters.**”

Software Utilities

AFLASH2 DOS Utility

This utility allows you to upgrade your Notebook PC’s BIOS in DOS mode. You enter DOS mode by booting to a DOS system on a floppy disk, CD, or USB drive instead of entering the Windows operating system. AFLASH2.EXE can be found in the “Aflash” folder of the support CD. (This utility is not shown in this User’s Manual.)

Check Mail Utility

Installs **Check Mail** utility to monitor and notify you of incoming email messages waiting in your Microsoft® Outlook or Outlook Express Inbox. (This utility may or may not be compatible with other email applications.)

GameFace Utility (on selected models)

Installs **GameFace** utility. GameFace lets you talk to and see your friend on the remote computer (video conferencing) even when you are playing a full-screen game. Requires “GameFace Enhanced Display Driver.”

LiveUpdate Utility

This utility helps you easily upgrade your Notebook PC’s BIOS through an Internet connection.

Norton Internet Security 2005 Utility

Installs **Norton Internet Security** to provide comprehensive virus prevention, threat detection, and repair software for your computer. It automatically detects and repairs known viruses. **Norton Internet Security** detects viruses and other potential risks in instant messenger attachments as well as in email messages, Internet downloads, and other files. Easy updating of the virus definitions over the Internet keeps **Norton Internet Security** prepared for the latest threats. **Norton Internet Security** also includes: Security protection features, Personal Firewall, Spam filtering features, and Ad blocking features.

You may skip this software if you have your own antivirus software.

Power4 Gear Utility

Power4 Gear is a custom utility designed for this Notebook PC that allows you to use predefined or user defined values for multi-selectable power saving modes or “gears”. You can “shift” between the “gears” using the taskbar icon or the keys above the keyboard.

NB Probe Utility

Installs **NB Probe** utility to monitor the Notebook PC’s CPU temperature and other resources. This is an optional software to help you better manage your Notebook PC’s resources.

TouchPad “Synaptics PS/2 TouchPad” Utility

Shown under Windows “**Mice and other pointing devices.**” Installs “**Synaptics® TouchPad**” utility. The Notebook PC already supports built-in or externally connected keyboard and PS/2 mouse devices. However, the provided device driver will provide enhancements and features to the TouchPad to increase the functionality of the TouchPad. For detailed information, see the Software Reference in the next section. To access help, right-click the TouchPad icon on the taskbar and select Help.

Video Security Utility (on selected models)

Installs **Video Security** utility. Video Security lets you use the optional built-in camera as a security camera and record activities within its view. Requires “GameFace Enhanced Display Driver.”

WinFlash Utility

Installs a BIOS update utility for Windows so that you can conveniently update your Notebook PC’s BIOS without having to restart your Notebook PC in DOS mode.

Drivers Provided in Windows XP

If you have any problems with these drivers, visit the Microsoft Windows Update site. A link is provided in Microsoft Windows Explorer under “Tools.”

1394 (Already supported in Windows XP)

This driver is provided by Microsoft in its Windows XP operating system.

This device is shown under Windows Device Manager “**IEEE 1394 Bus host controllers**”.

AGP (Already supported in Windows XP)

This function is already supported in Windows XP. The support CD also includes a version of this utility for other Windows versions. Installation will not be possible under Windows XP.

This device is shown under Windows Device Manager “**System devices**”.

PCMCIA (Already supported in Windows XP)

This driver is provided by Microsoft in its Windows XP operating system.

This device is shown under Windows Device Manager “**PCMCIA adapters**”.

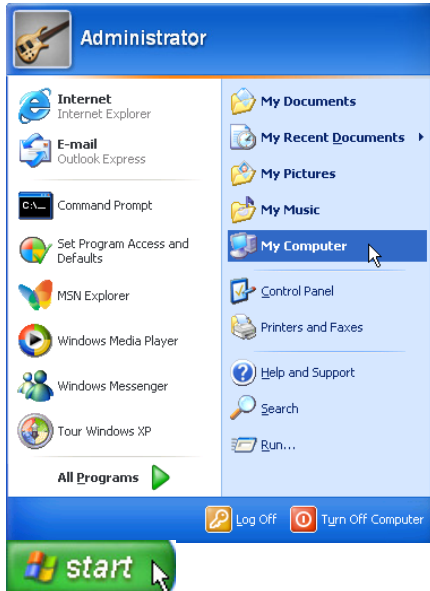
USB 2.0 (Already supported in Windows XP SP1 & Windows 2000 SP4)

This driver is provided by Microsoft in its Windows operating system. The support CD also includes a version of this driver for Windows 98 SE or Windows ME. This driver is not required for Windows 2000 or Windows XP and installation will not be possible.

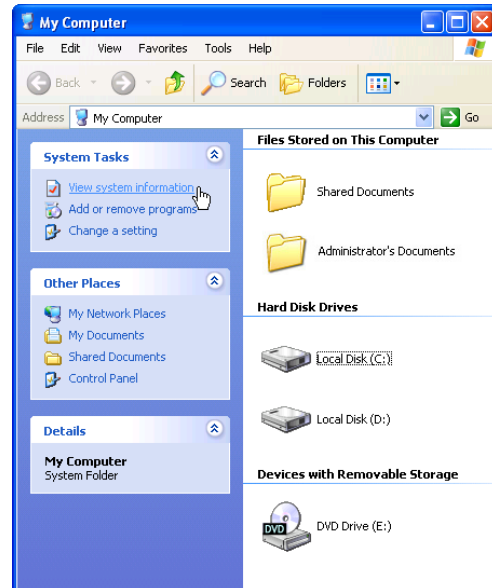
This device is shown under Windows Device Manager “**Universal Serial Bus controllers**”.

Device Manager

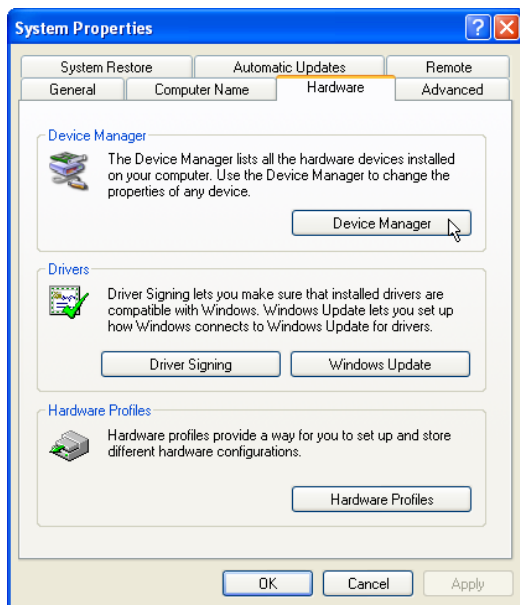
“Device Manager” will be used in many device driver installation, upgrade, and verification processes.



1. Click “start” button.
2. Click “My Computer” icon.



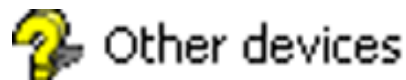
3. Click “View system information” link.

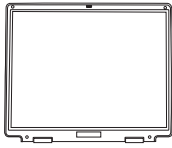


4. Click “Hardware” tab.
5. Click “Device Manager” button.

Hardware Devices

After installing your operating system, several question marks will appear under “Other devices” representing hardware devices that Windows cannot recognize. After installing the drivers from the provided support CD. Those question marks will go away.





VGA Driver

(It is necessary to install the VGA driver first in order to see other setup screens in their proper sizes.)

Topics Covered:
VGA Driver Setup
Display Settings for Windows XP
Taskbar Menu

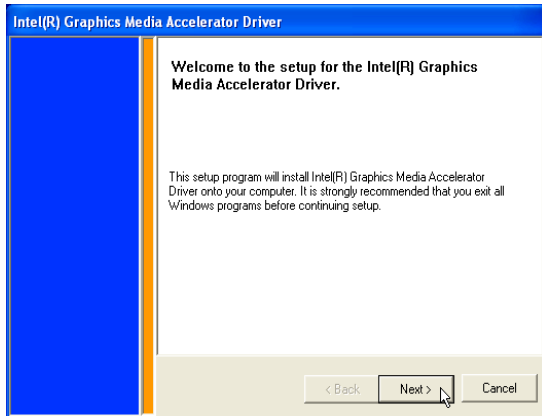
- Before
- Model 1 Other devices
 - Video Controller (VGA Compatible)
 - Model 2 Other devices
 - Video Controller (VGA Compatible)
 - Model 3 Other devices
 - Video Controller (VGA Compatible)

- After
- Display adapters
 - Intel(R) 82852/82855 GM/GME Graphics Controller
 - Display adapters
 - ATI MOBILITY RADEON 9700
 - Display adapters
 - SIS M760GX

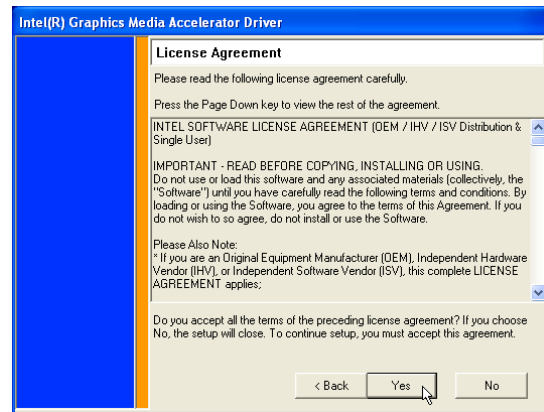
(Screens and drivers may vary depending on your model and operating system.)

VGA Driver Setup (Model 1 – Intel)

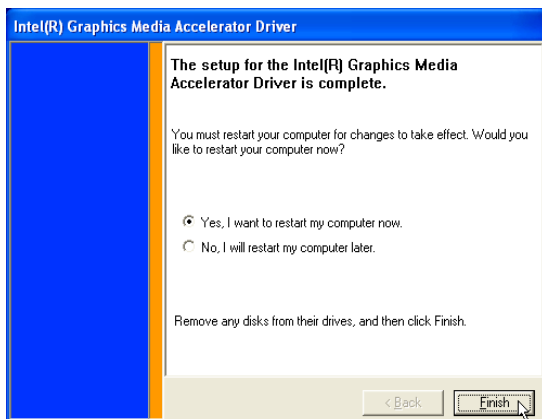
Your VGA driver will depend on the Notebook PC model purchased. Running setup will give you the following wizard.



1. On the “Welcome” screen, click **Next** after reading the message.

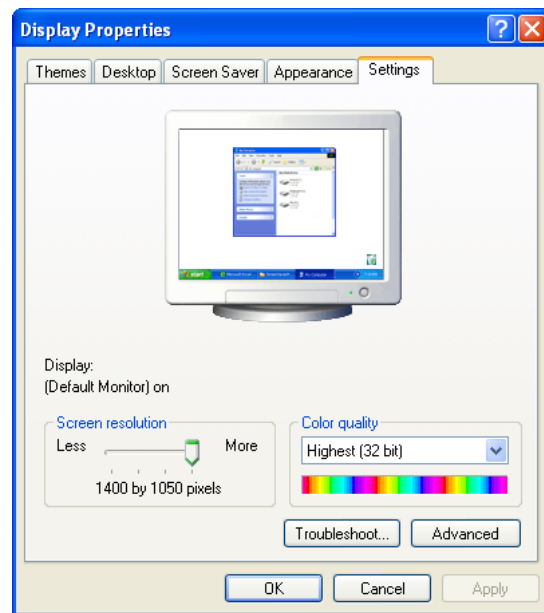


2. On the “License Agreement” screen, click **Yes** after reading.



3. When setup is complete, select “Yes...” and click **Finish** in order to restart Windows with a higher screen resolution*.

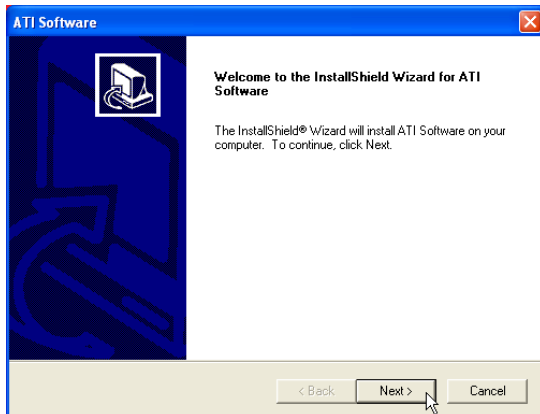
*** Windows may have already provided the highest screen resolution support for this graphics controller.**



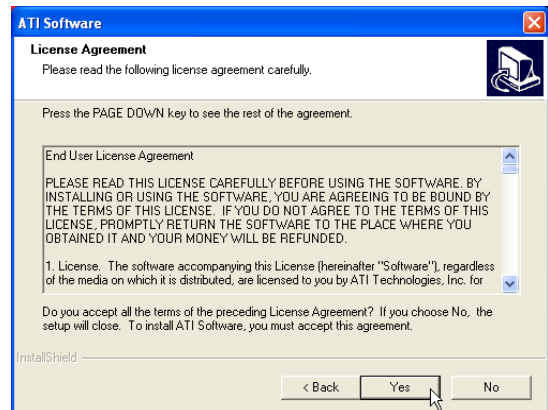
Before VGA drivers are installed, graphics functions are limited.

VGA Driver Setup (Model 2 – ATI)

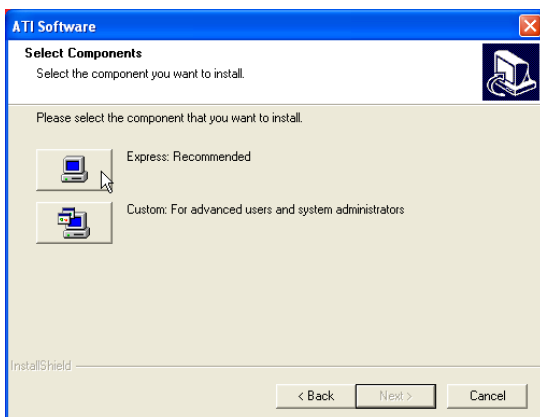
Your VGA driver will depend on the Notebook PC model purchased. Running setup will give you the following wizard.



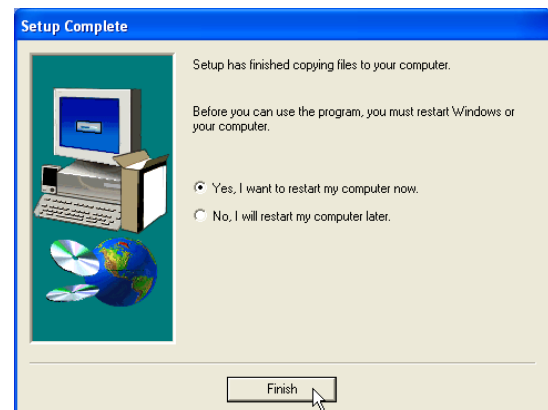
1. On the “Welcome” screen, click **Next** after reading the message.



2. On the “License Agreement” screen, click **Yes** after reading.



3. On the “Select Components” screen, click **Express**.

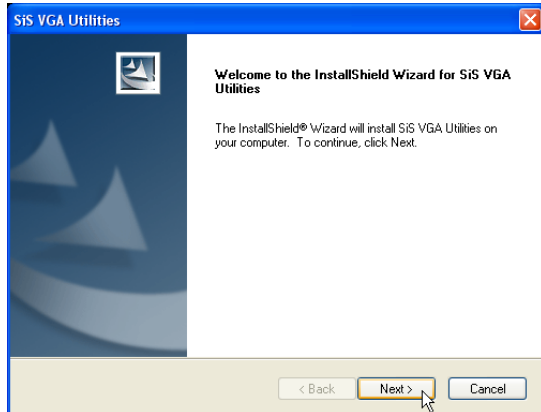


4. When setup is complete, select “Yes...” and click **Finish** in order to restart Windows with a higher screen resolution*.

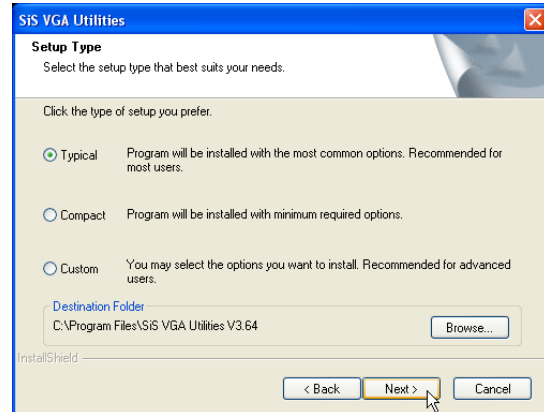
*** Windows may have already provided the highest screen resolution support for this graphics controller.**

VGA Driver Setup (Model 3 – SiS)

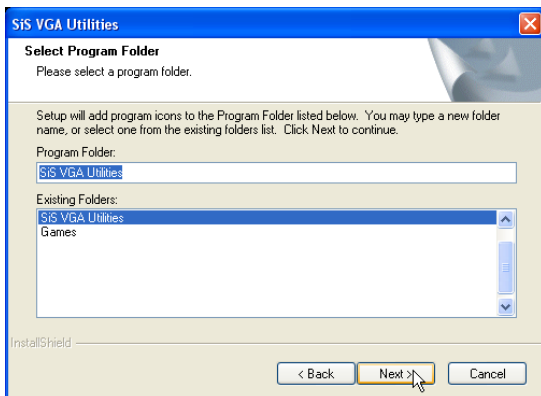
Your VGA driver will depend on the Notebook PC model purchased. Running setup will give you the following wizard.



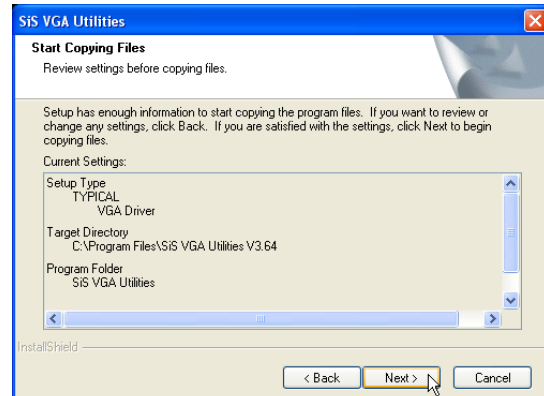
1. On the “Welcome” screen, click **Next** after reading the message.



2. On the “Setup Type” screen, click **Next** to use the default settings.

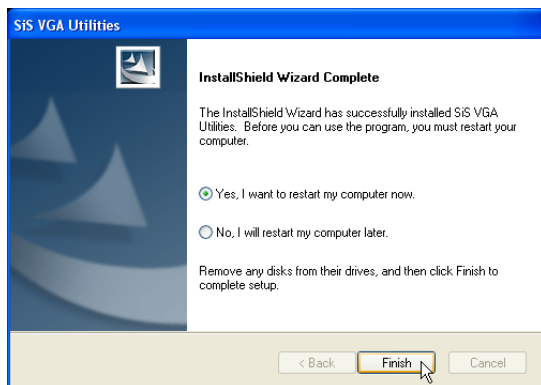


3. On the “Select Program Folder” screen, click **Next** to use the default folder or enter another folder name.



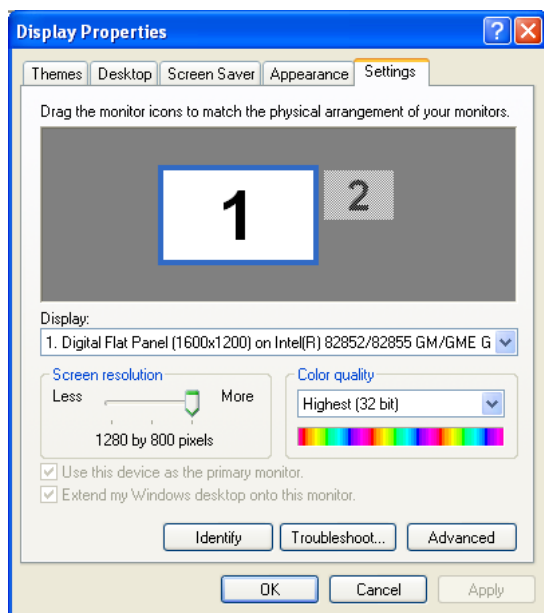
4. On the “Start Copying Files” screen, click **Next** after verifying the settings or click back to make changes.
5. When setup is complete, select “Yes...” and click **Finish** in order to restart Windows with a higher screen resolution*.

*** Windows may have already provided the highest screen resolution support for this graphics controller.**



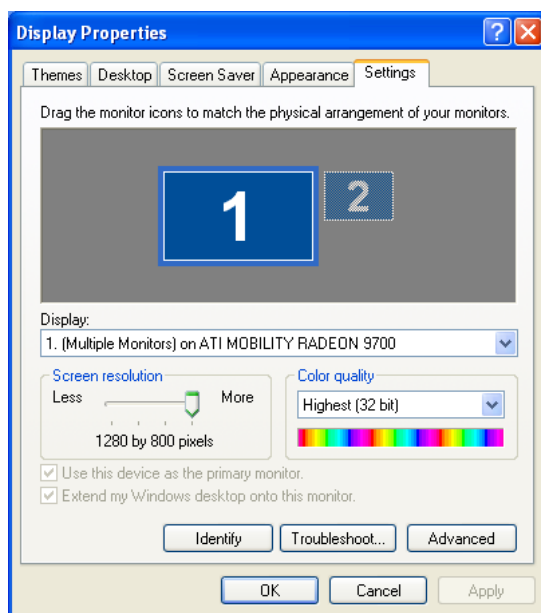
VGA Driver Setup (Cont.)

After VGA driver installation (Model 1)

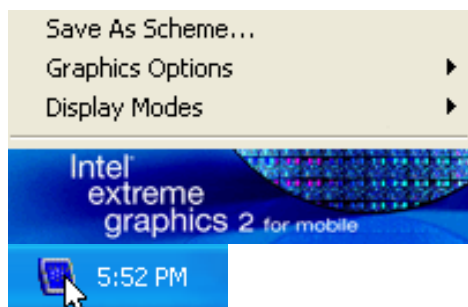


Make screen resolution settings in “Display Properties”. Higher resolutions may be available but panning will occur if you surpass the display panel’s specifications.

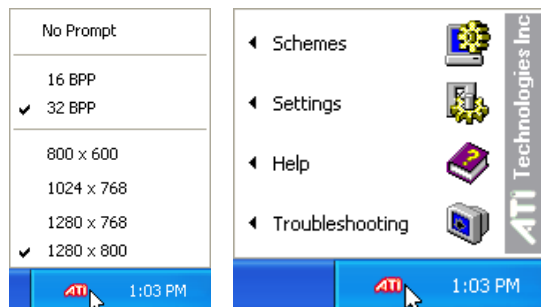
After VGA driver installation (Model 2)



Make screen resolution settings in “Display Properties”. Higher resolutions may be available but panning will occur if you surpass the display panel’s specifications.



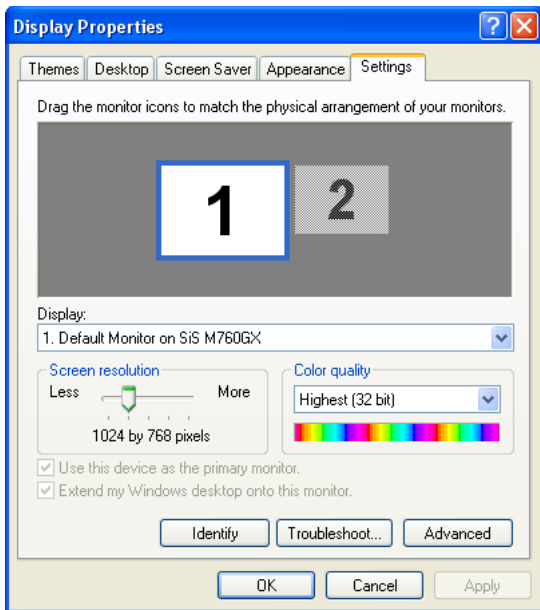
Left click - for shortcuts to display settings.



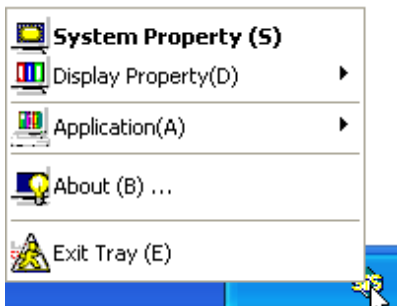
Left click - for quick resolution settings. **Right click** - for shortcuts to display settings.

VGA Driver Setup (Cont.)

After VGA driver installation (Model 3)



Make screen resolution settings in “Display Properties”. Higher resolutions may be available but panning will occur if you surpass the display panel’s specifications.



Right click - for shortcuts to display settings.

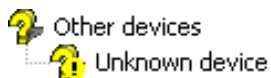


ATK0100 Driver (ACPI)

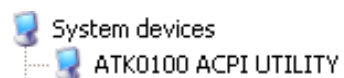
(Required driver)

Topics Covered:
ATK0100 Driver Setup

Before



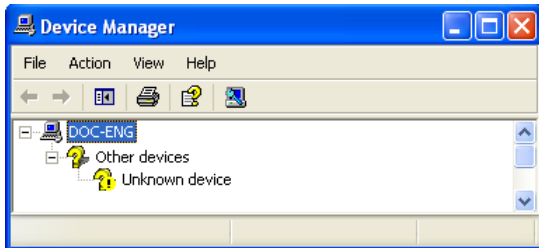
After



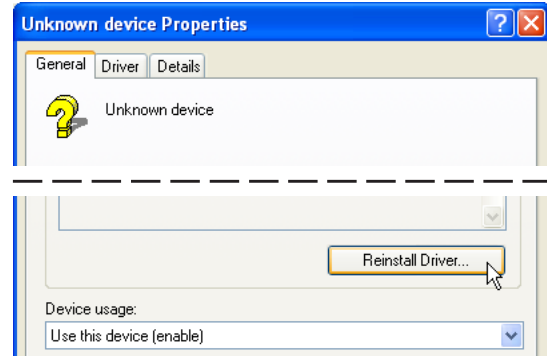
(Screens and drivers may vary depending on your model and operating system.)

ATK0100 Driver Setup

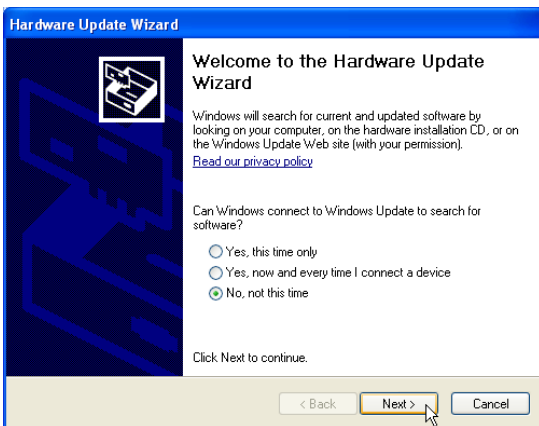
This driver requires that you manually install it from Device Manager. No software operation is required.



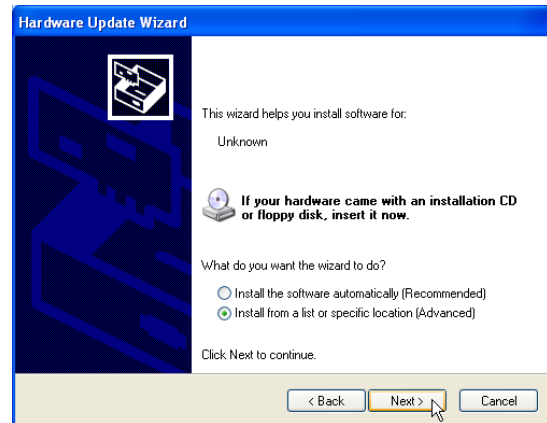
1. Double click **Unknown device**.



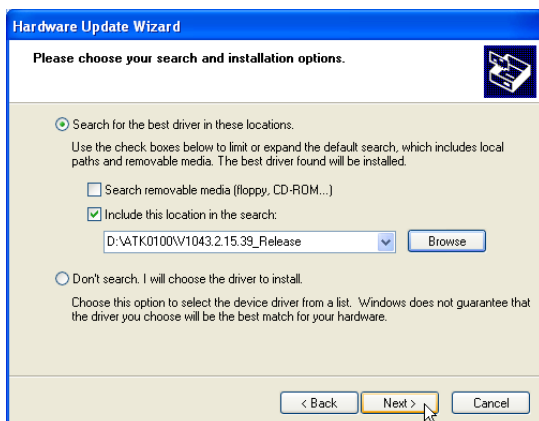
2. Click **Reinstall Driver**.



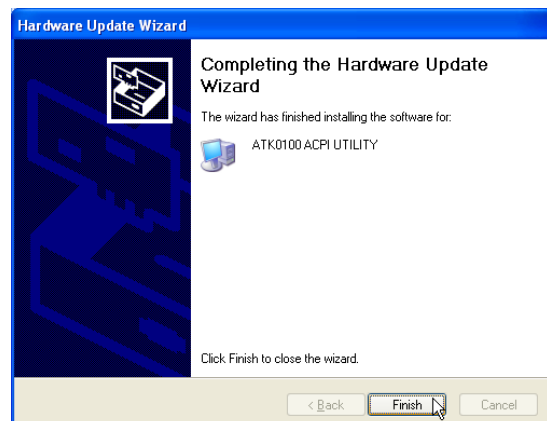
3. Select "No..." and click **Next**.



4. Select "Install from..." and click **Next**.



5. Browse to your operating system folder in the "ATK0100" folder and click **Next**.



6. Click **Finish** when setup is complete.
7. Click **Close** to close the properties window.

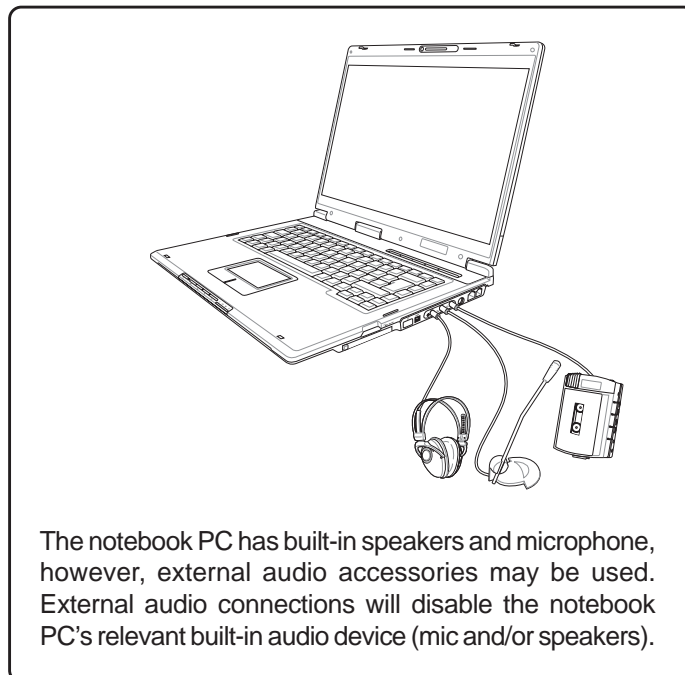


Audio

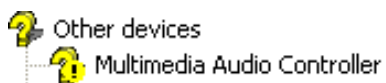
(Required driver)

Topics Covered:

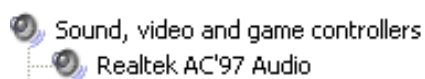
Audio Setup



Before



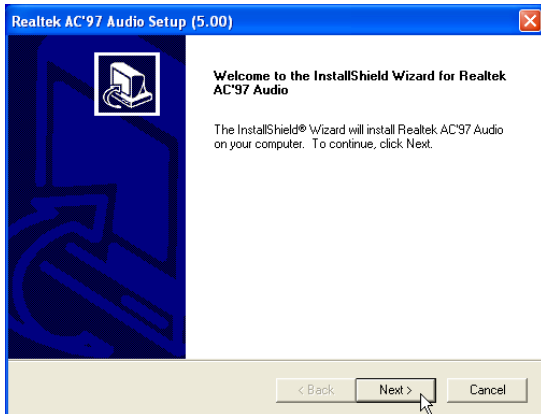
After



(Screens and drivers may vary depending on your model and operating system.)

Audio Setup

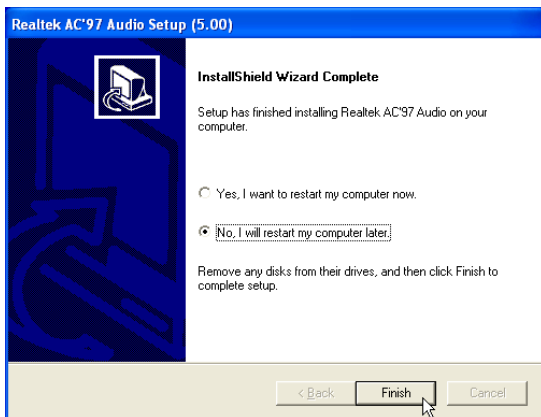
Running setup will give you the following wizard:



1. Click **Next** to begin setup.



2. On the “Windows Logo testing” screen, click **Continue Anyway** because this driver has been fully tested by the manufacturer for this Notebook PC.



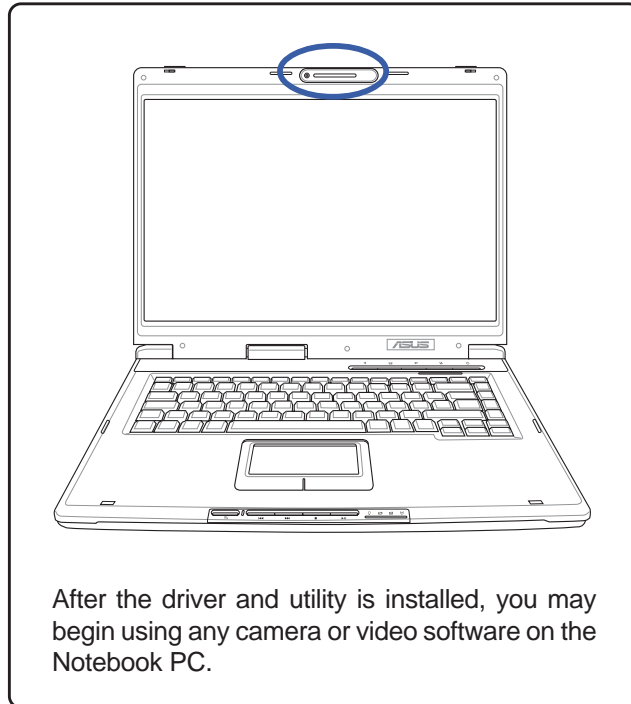
3. When setup is complete, select **No...** and click **Finish** in order to install other items.



CMOS Camera

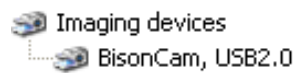
(Required driver on selected models)

Topics Covered:
Camera Driver Setup
Using the Camera



(No previous category in Device Manager)

After



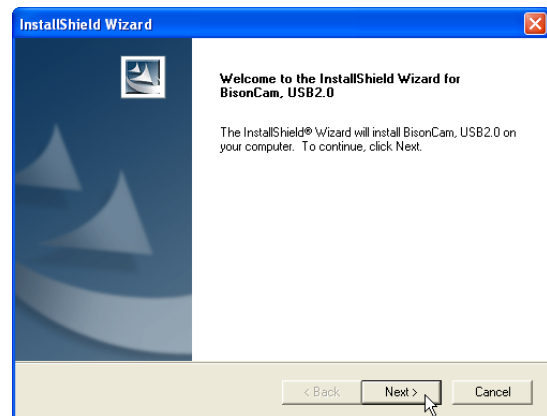
Screens will vary depending on your operating system but the contents should be the same.

Camera Driver Setup

If you purchased the Notebook PC with the built-in camera, you will need to install this driver and utility. Running setup will give you the following wizard:



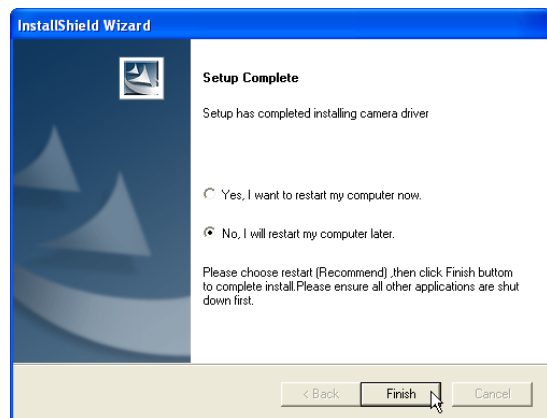
1. On the “Choose...Language” screen, select the language you wish to install and click **OK**.



2. On the “Welcome” screen, click **Next** to begin installing the driver.



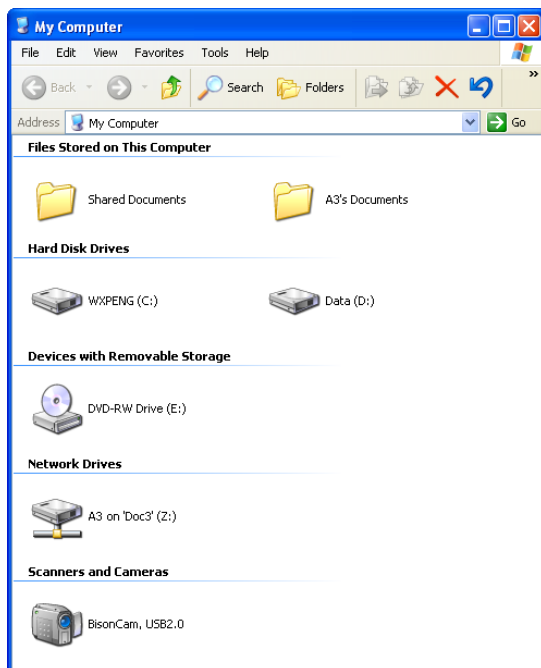
3. On the “Windows Logo warning” screen, click **Continue Anyway** because this driver has been fully tested by the manufacturer for this Notebook PC.



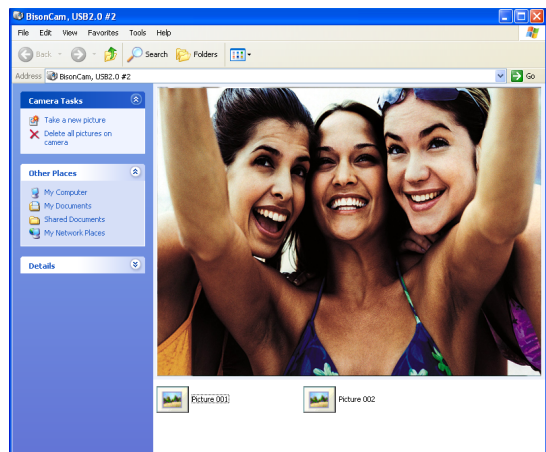
4. On the “Setup Complete” screen, select “No...” and click **Finish** in order to install other items before restarting.

Using the Camera

Microsoft Windows



In “My Computer”, you will see **BisonCam**. Double click on it to begin using it with Windows native camera software.

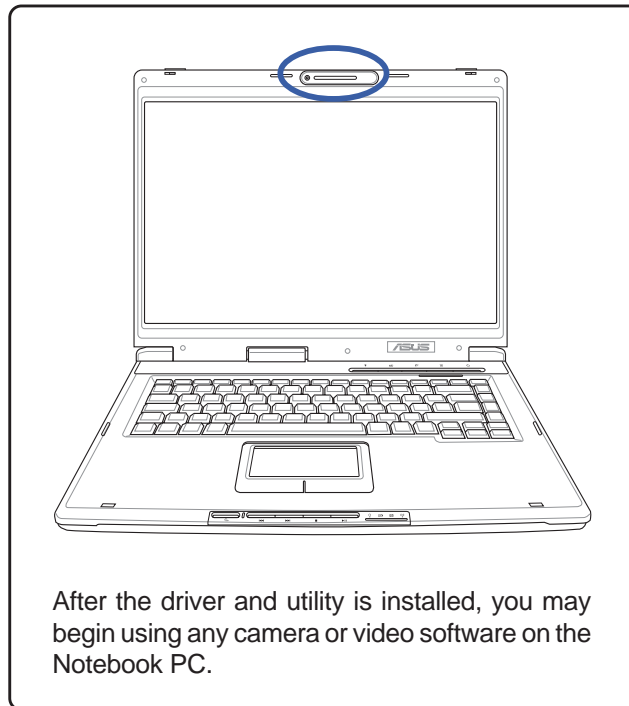


With Windows native camera software, you can see yourself in real-time. Click **Take a new picture** to capture your image to a file on your hard drive.

GameFace Enhanced Display Driver

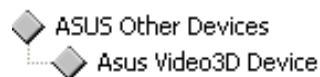
(Required driver for GameFace utility on selected models)

Topics Covered: GameFace Driver Setup



(No previous category in Device Manager)

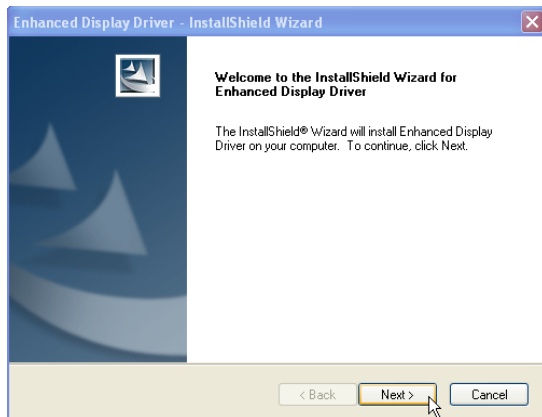
After



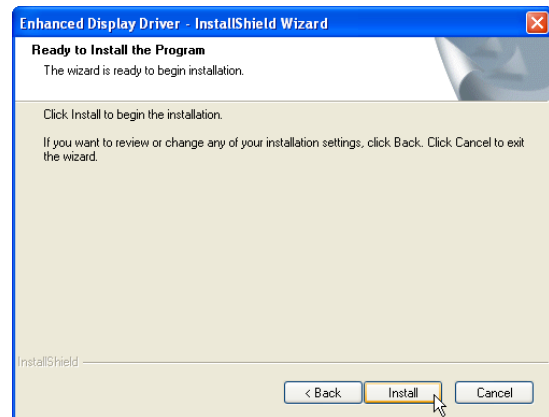
(Screens and drivers may vary depending on your model and operating system.)

GameFace Driver Setup (selected models)

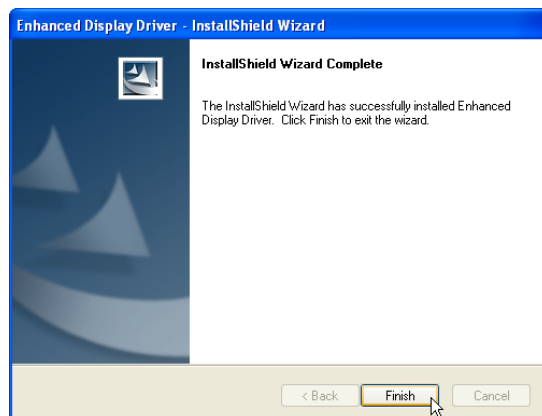
Running setup will give you the following wizard:



1. On the “Welcome” screen, click **Next** after confirming this is what you want to setup..



2. Click **Install** to begin copying files.



3. After the files are installed, click **Finish**.



4. When setup is complete, select “No...” and click **Finish** in order to install other items.

INF Update (Intel)

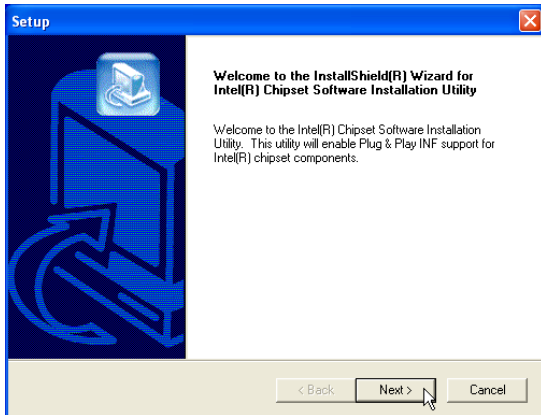
(Required driver)

Topics Covered:
INF Update Driver Setup

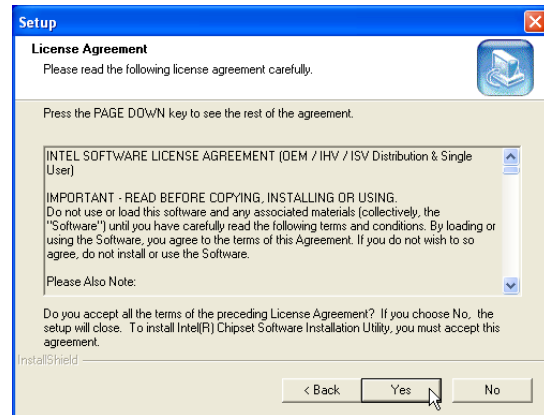
(Screens and drivers may vary depending on your model and operating system.)

INF Update Driver Setup

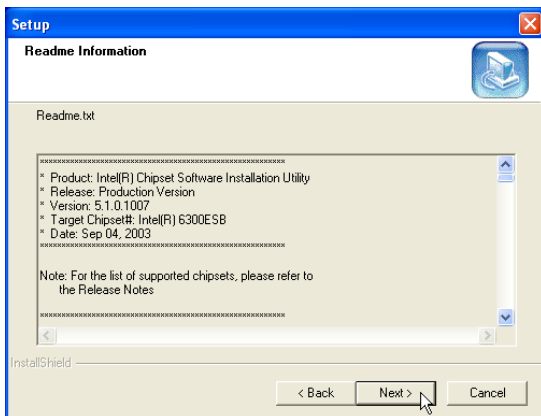
Running setup will give you the following wizard:



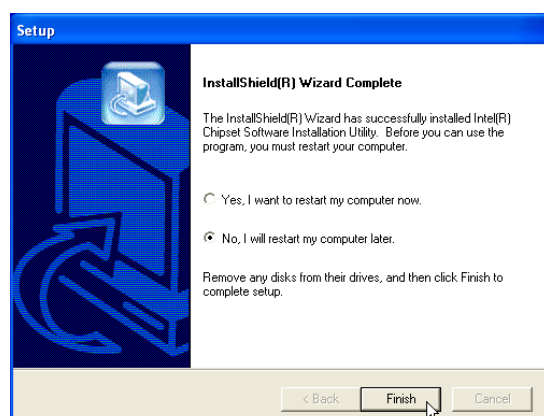
1. On the "Welcome" screen, click **Next** after confirming this is what you want to setup.



2. On the "License Agreement" screen, click **Next** after reading.



3. On the "Readme" screen, click **Next** after reading.



4. Setup is now complete, select "**No...**" and click **Finish** in order to install other items.



INTEL Calexico (Wireless LAN)

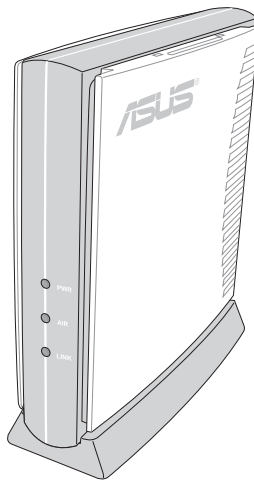
(Required driver on selected models)

Topics Covered:

Wireless LAN Driver Setup

Wireless LAN Utility Setup



Wireless LAN Utility Quick Start



An optional access point is required to setup a wireless network for the Notebook PC to connect to.

Before

After

 Network adapters
 Intel(R) PRO/Wireless 2200BG Network Connection

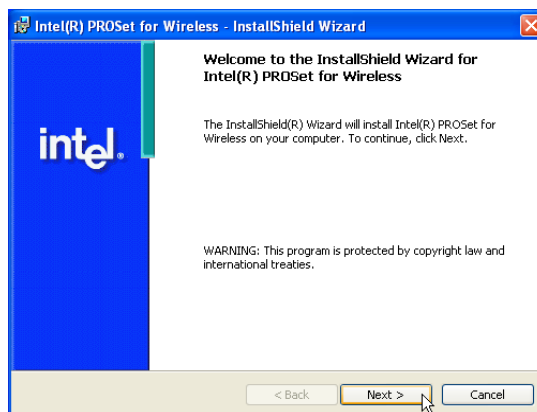
(Screens and drivers may vary depending on your model and operating system.)

Wireless LAN Driver Setup - Calexico2 (ABG)

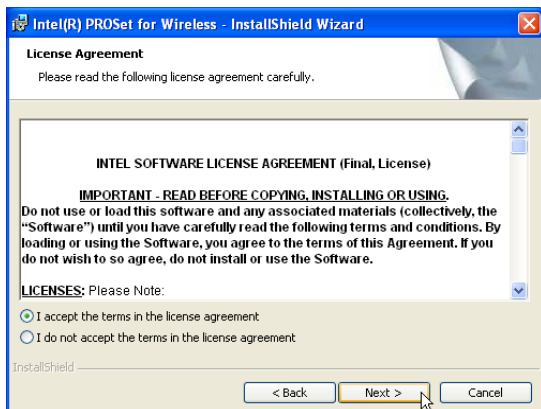
Driver depends on model. Running setup will give you the following wizard:



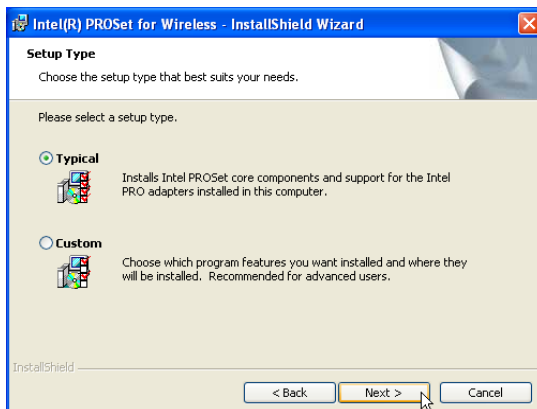
1. On the “Autorun” screen click **Install Software**.



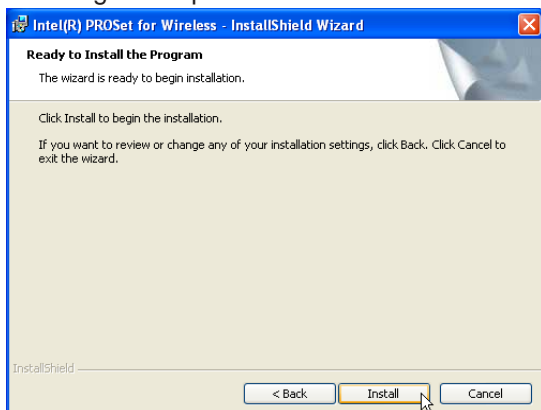
2. On the “Welcome” screen click **Next** after reading the message.



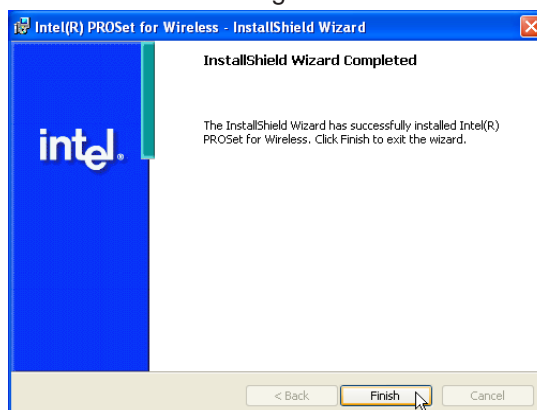
3. On the “Agreement” screen, click **Next** after selecting “I accept...”



4. On the “Select Components” screen, click **Next** to use the default settings.



5. On the “Ready” screen click **Install** to begin the installation.



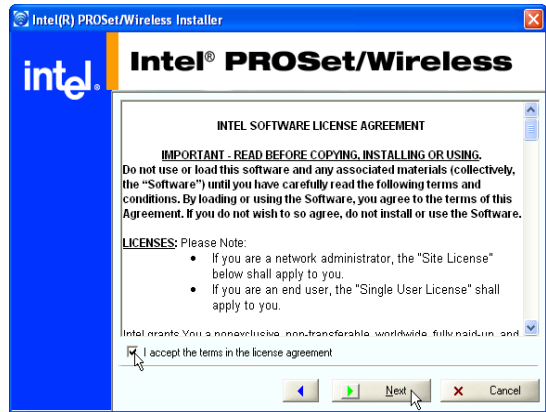
6. On the “Wizard Complete” screen, click **Finish** to exit the installation wizard.

Wireless LAN Driver Setup - Calexico2 (2200BG)

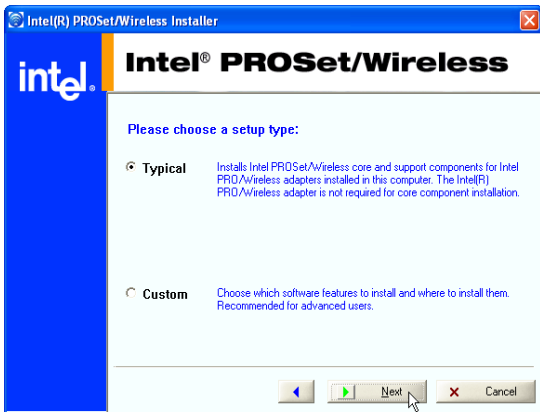
Driver depends on model. Running setup will give you the following wizard:



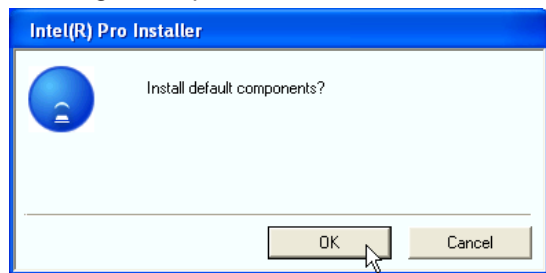
1. On the “Autorun” screen click **Install Software**.



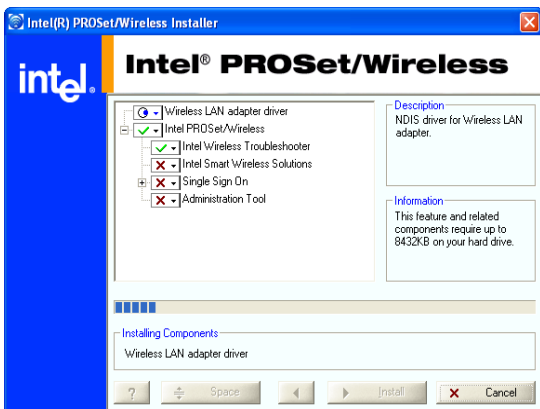
2. On the “Agreement” screen, click **Next** after selecting “I accept...”



3. On the “Setup Type” screen, click **Next** to use the default settings.



4. On the “Install default components” screen, click **OK** to use the default settings.



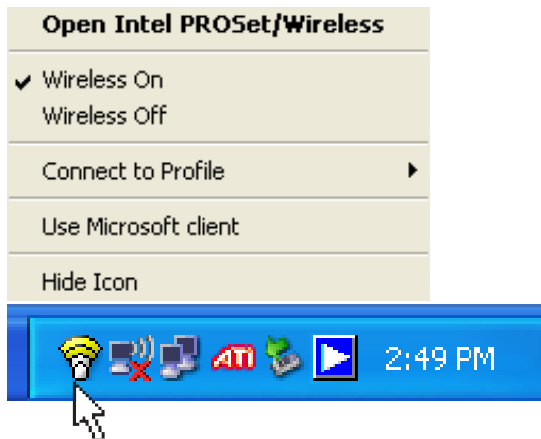
5. Wait while components are installed.



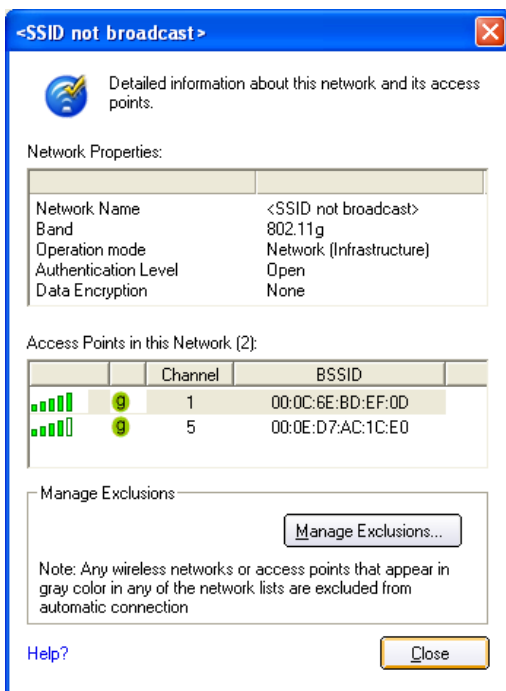
6. When complete, click **Ok** to exit the installer.

Wireless LAN Utility Introduction

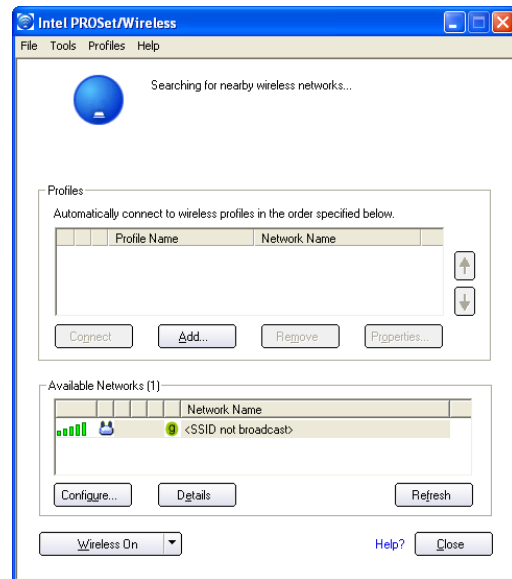
After installing the Wireless driver and utility, the utility will automatically start with Windows. If you need to start it manually, you can launch the utility using the desktop icon or through Windows **start**. You will need to make some wireless LAN settings before being able to use your wireless connection.



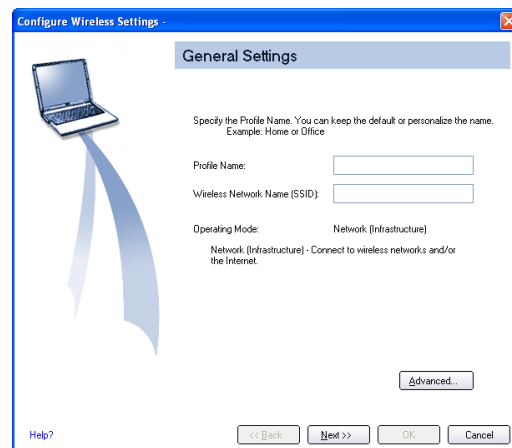
After installation, you will have several options available through the icon on the task bar.



Details - View available access point information here.



Status - View connection status here.



Configure - Make a new profile to save specific settings for use in different WLAN networks.



ASUS Wireless LAN

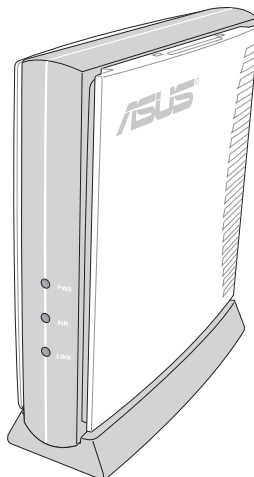
(Required driver on selected models)

Topics Covered:

ASUS WLAN Driver Setup

ASUS WLAN Utility Setup

ASUS WLAN Utility Quick Start

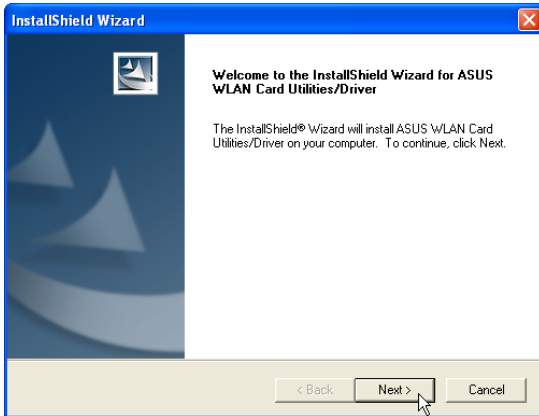


An optional access point is required to setup a wireless network for the Notebook PC to connect to.

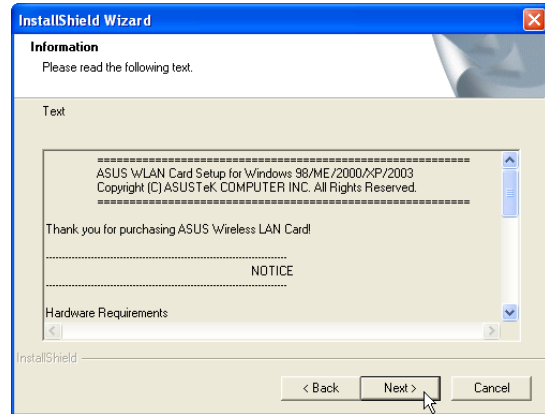
Screens will vary depending on your operating system but the contents should be the same.

ASUS WLAN Driver Setup

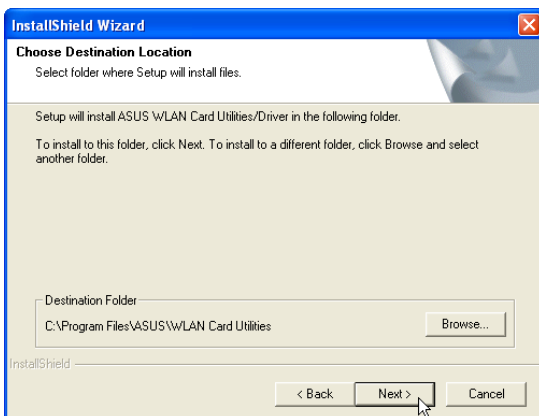
Running setup will give you the following wizard:



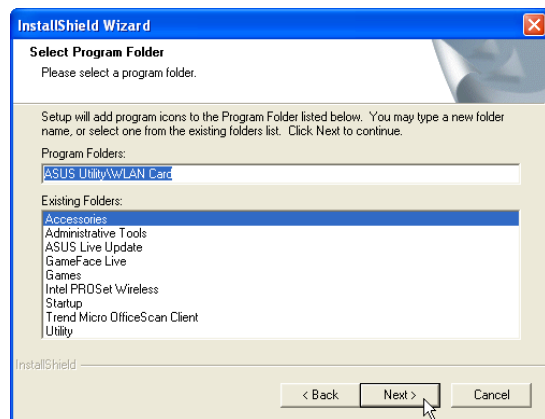
1. Click **Next** after reading the “Welcome” screen.



2. Click **Next** after reading the “Information” screen.



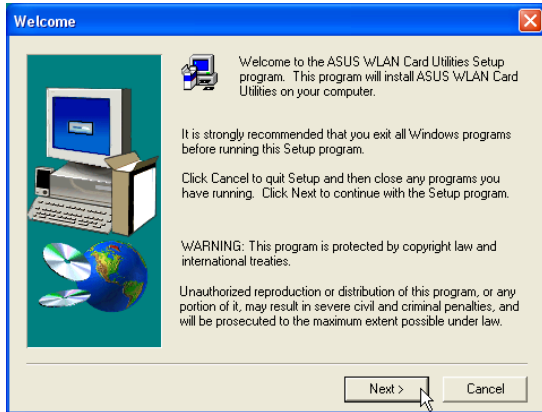
3. On the “Select Program Folder” screen, click **Next** to continue or you may first change the folder.



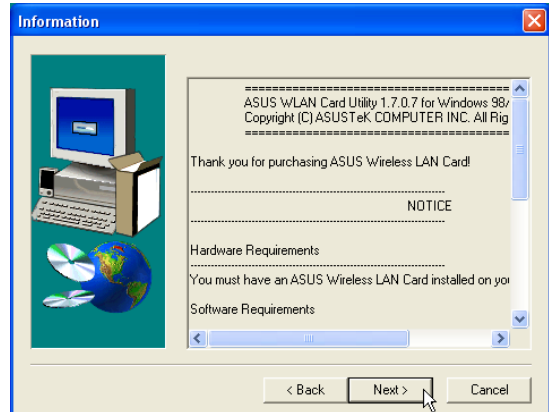
4. Setup is now complete, select “No...” and click **Finish** in order to install other items.

ASUS WLAN Utility Setup

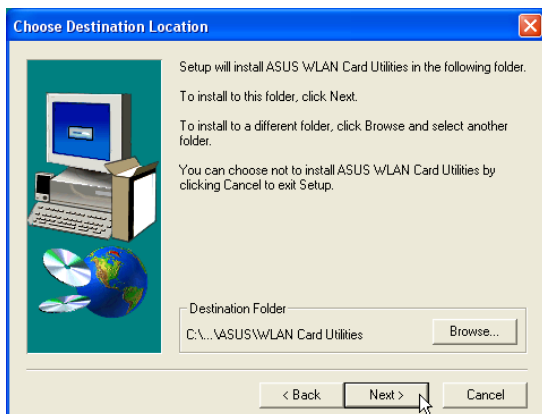
After installing driver, you need to install the wireless utility.



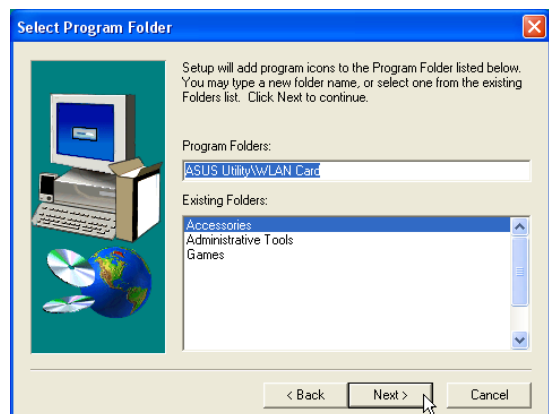
1. Click **Next** after reading the “Welcome” screen.



2. Click **Next** after reading the “Information” screen.

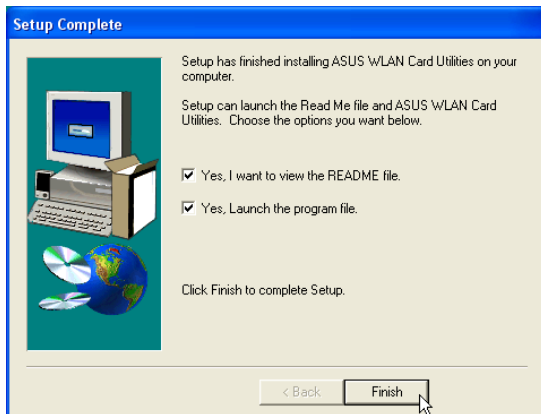


3. On the “Choose Destination Location” screen, click **Next** to continue or you may first change the destination folder.

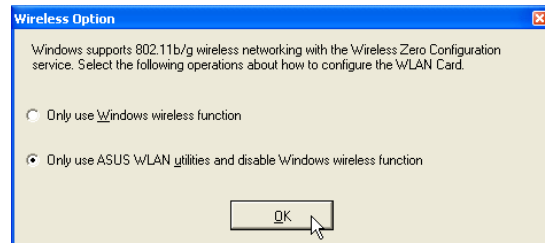


4. On the “Select Program Folder” screen, click **Next** to continue or enter a different folder name.

ASUS WLAN Utility Setup (Cont')



5. Click **Finish** on the “Setup Complete” screen.



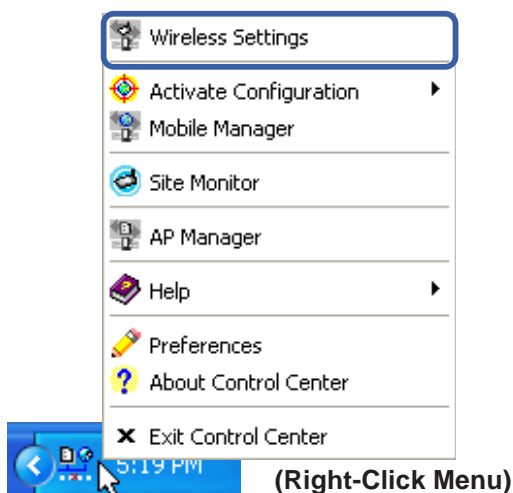
6. Select to use “...ASUS Utilities...” for added features while using the wireless LAN device.

ASUS WLAN Utility Quick Start

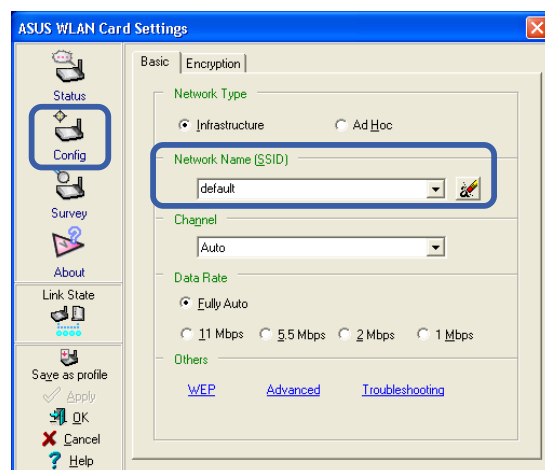
After installing the ASUS WLAN driver and utility, the utility will automatically start with Windows. If you need to start it manually, you can launch the utility using the desktop icon or through Windows **start**. You will need to make some wireless LAN settings before being able to use your wireless connection.



ASUS WLAN
Control Center

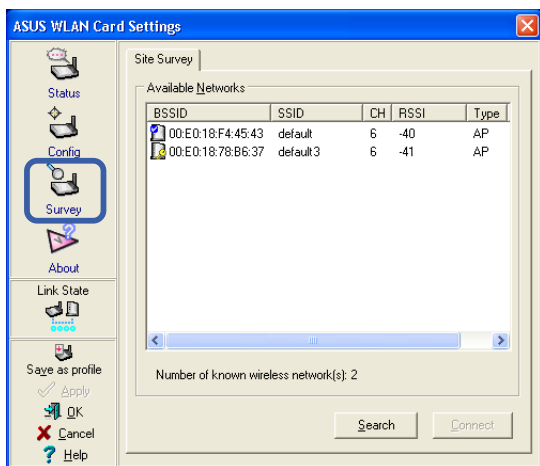


1. Right-click the ASUS WLAN icon and select “Wireless Settings”

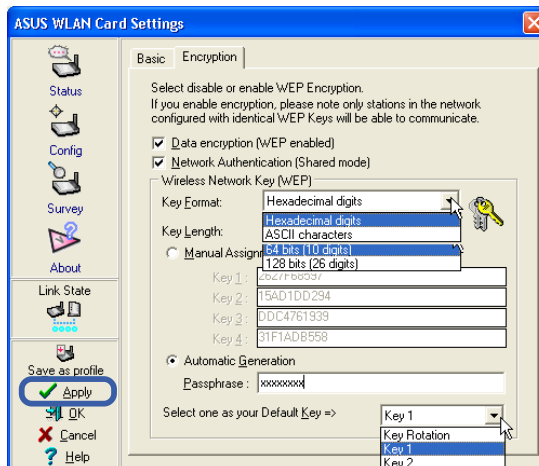


2. Set the Network Name (SSID) to the same name as the SSID set in your wireless access point.

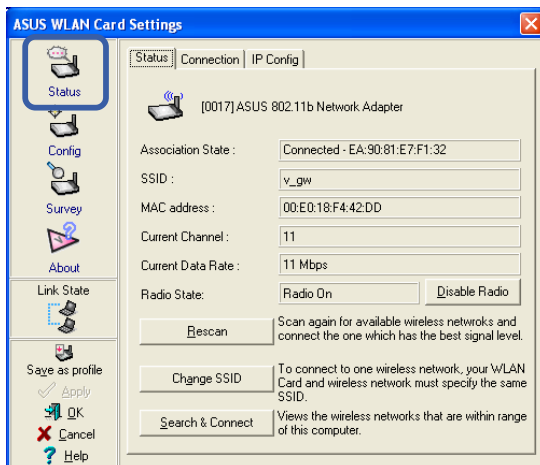
ASUS WLAN Utility Quick Start (Cont.)



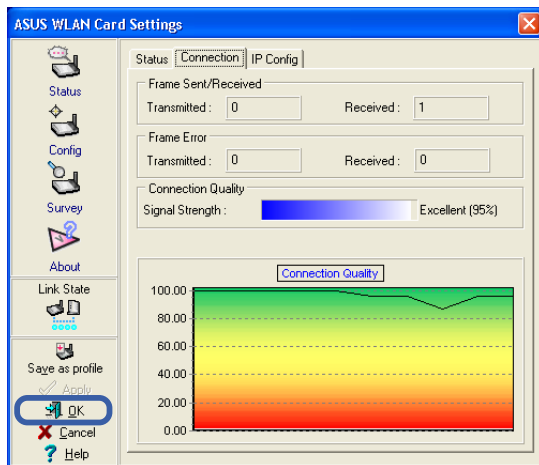
3. Use “Site Survey” if you don’t know the name of your access point(s).



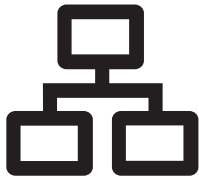
4. Encryption settings must also match those set in the access point. Talk with your network administrator if necessary. Click **Apply** to save your settings



5. Check the “Status” page to see the “Association State”. It should show “Connected - xx:xx:xx:xx:xx:xx”.



6. You can also see the connection quality on the “Connection” page. Click **OK** to exit the utility.



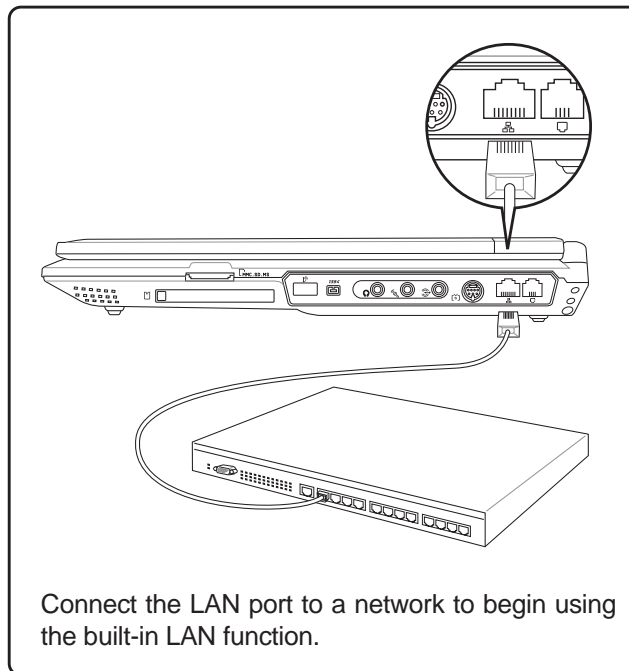
LAN

(Required driver)

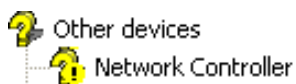
Topics Covered:

LAN Driver Setup

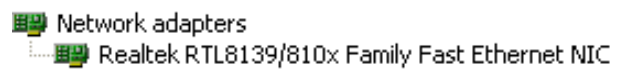
Configuring your LAN



Before



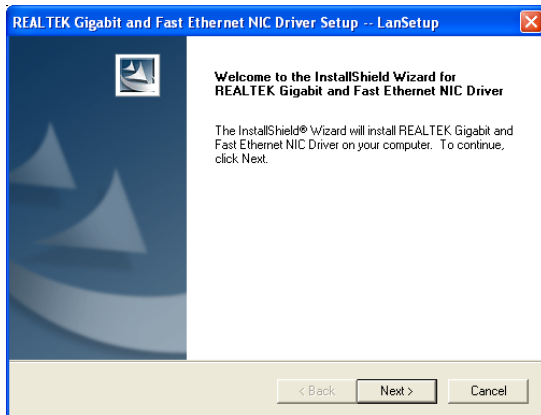
After



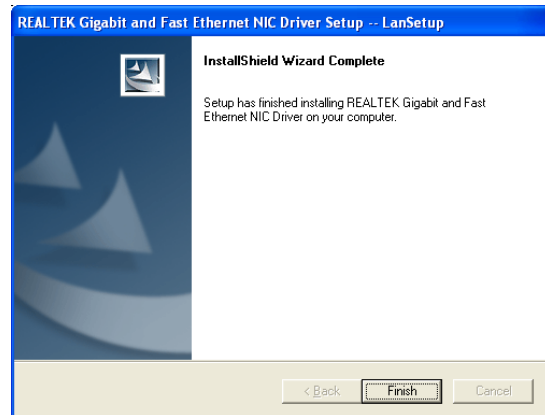
(Screens and drivers may vary depending on your model and operating system.)

LAN Driver Setup

You will see a “Found New Hardware Wizard” if your device requires setup. If not your driver may already be installed by Windows. If your device is not working, you can manually install the driver as follows:



1. Run “Setup” and click **Next** on the Welcome screen.



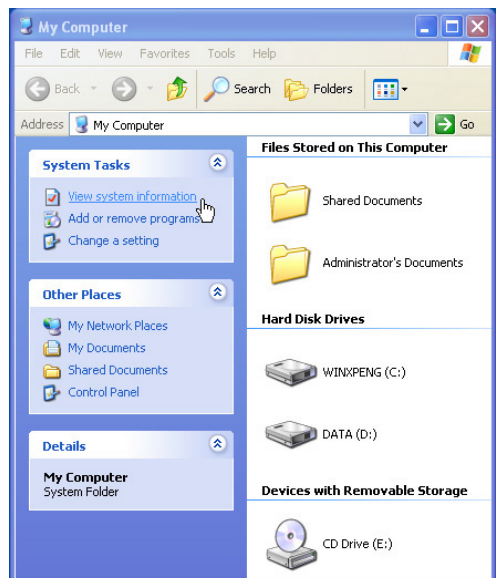
2. When complete, click **Finish** to exit the installation wizard.

Configuring your LAN

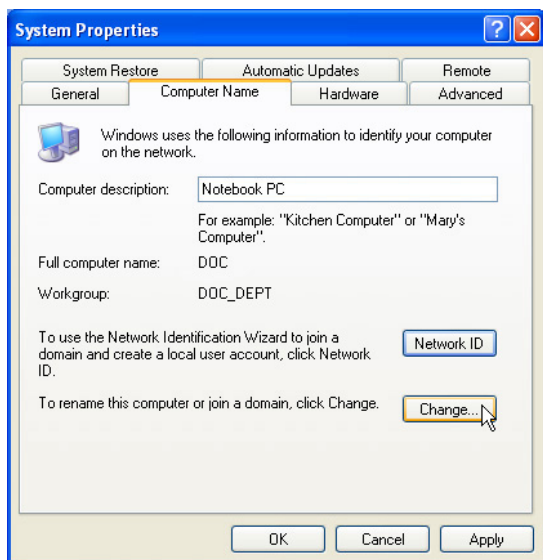
Joining a Domain or Workgroup (Windows XP)



(1) Click **Start** and **My Computer**.



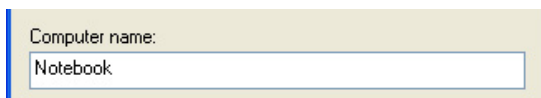
(2) Click **View system information**.



(3) Your computer name, workgroup or domain information is shown here. Click **Change** to view options.



You cannot use spaces or symbols in the computer name. In the example here, a warning is given when trying to use "Notebook PC". You can use the single word "Notebook" instead.

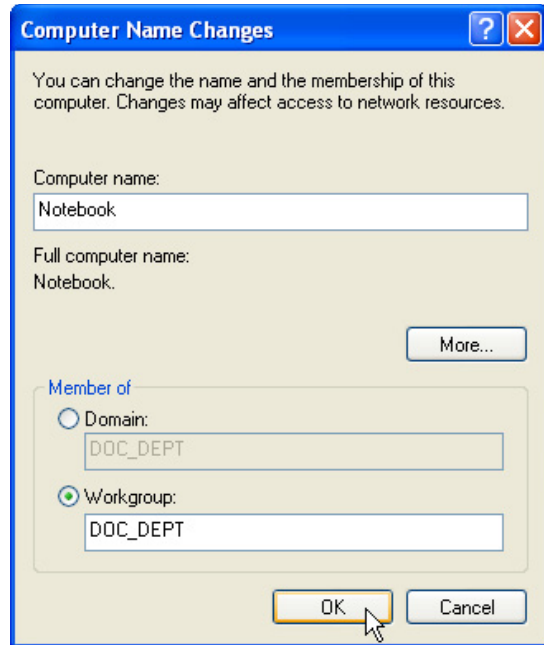


Joining a Domain or Workgroup (Cont')



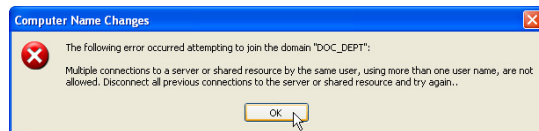
(4a) Domain:

The primary server in the domain will perform routing functions and security verifications for your computer. Select **Domain** and enter an existing domain you wish to join. **NOTE:** After clicking "OK", you will be asked for the Domain Controller's Administrator password to join the domain in Windows XP.



(4b) Workgroup:

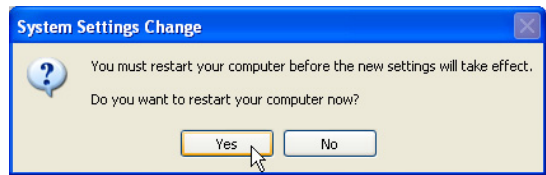
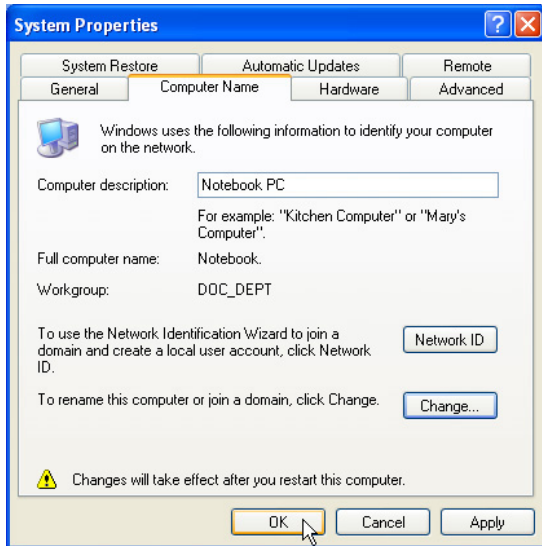
If your network does not have a domain or you are not authorized to join a domain, select Workgroup and type in an existing name or create your own (by typing an unused workgroup name)



Administrator Name or Password not accepted:

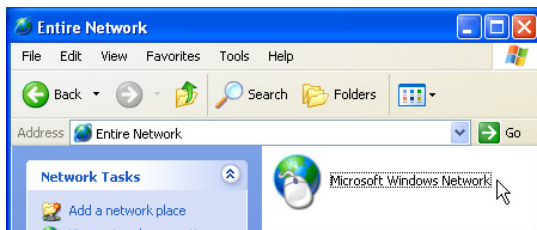
You cannot login with the Administrator name and use one password, then use the Administrator name with another password to add to a domain. You must login using another name. See Windows documentation to "Add New User" from User Accounts in the Control Panel.

Joining a Domain or Workgroup (Cont')

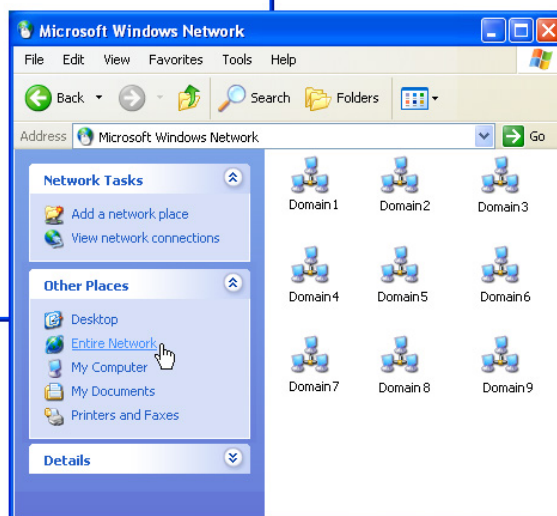


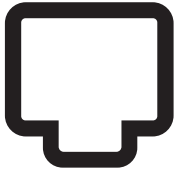
(5) After you restart your computer, you should see some contents through Entire Network.

Viewing Your Network



(6) Clicking on "My Network Places" will display networks which you have installed protocols for. Clicking a network protocol such as "MS Windows Network" will display all the servers available under that protocol.

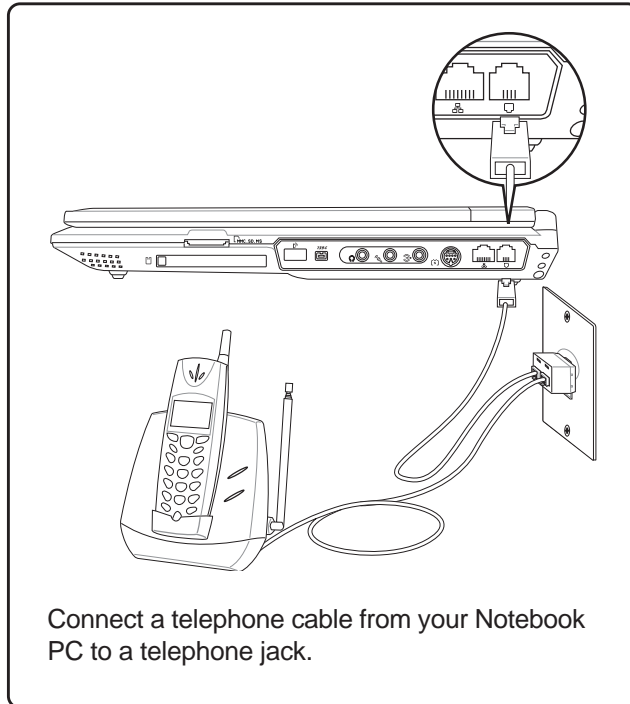




Modem

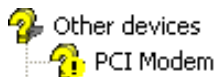
(Required driver)

Topics Covered:
Modem Driver Setup
Modem Configuration



Connect a telephone cable from your Notebook PC to a telephone jack.

Before



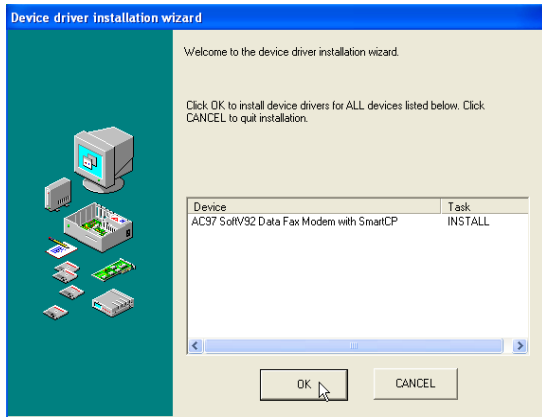
After



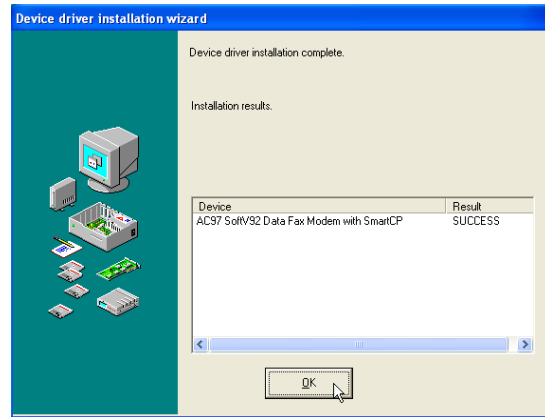
(Screens and drivers may vary depending on your model and operating system.)

Modem Driver Setup

Running setup will give you the following wizard:



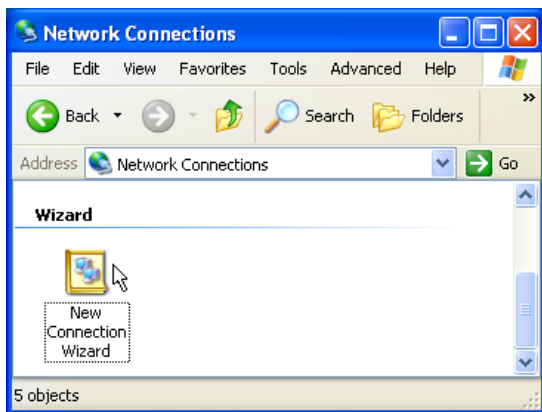
1. On the “Welcome” screen, click **Next** after reading.



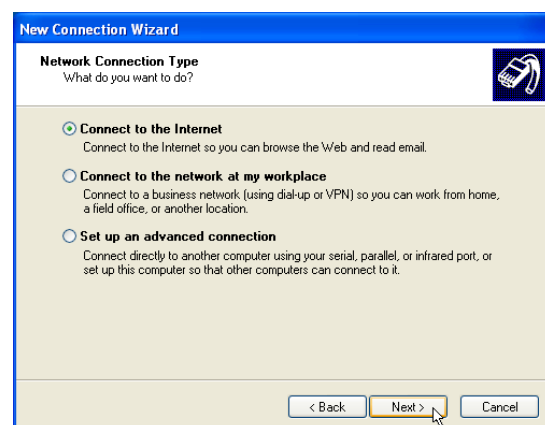
2. Setup is now complete, click **OK** to exit the wizard.

Modem Configuration

Use **New Connection Wizard** in “Network Connections” to start the configuration wizard to your modem. The New Connection Wizard also allows configuration for other communication devices (if available) such as LAN, ISDN, ADSL, or Bluetooth.

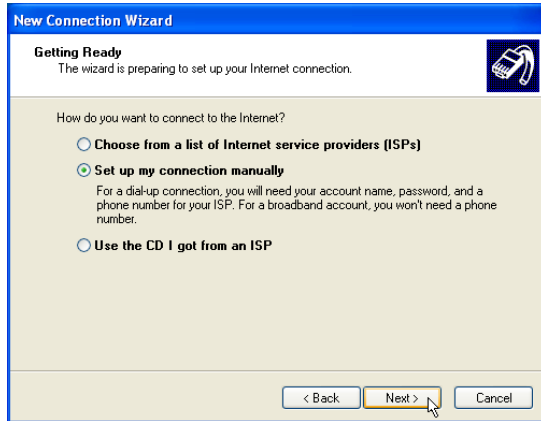


1. Double-click **New Connection Wizard** in Network Connections

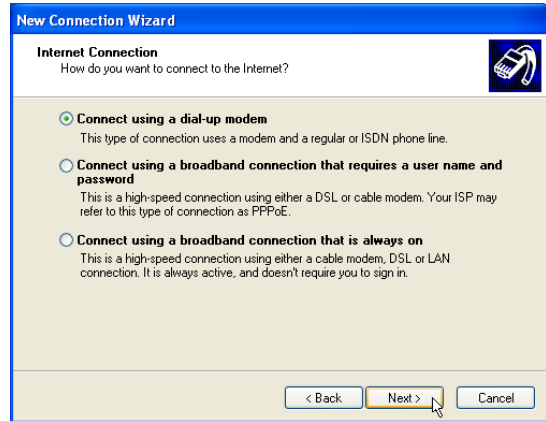


2. Select “Connect to the Internet” and click **Next**.

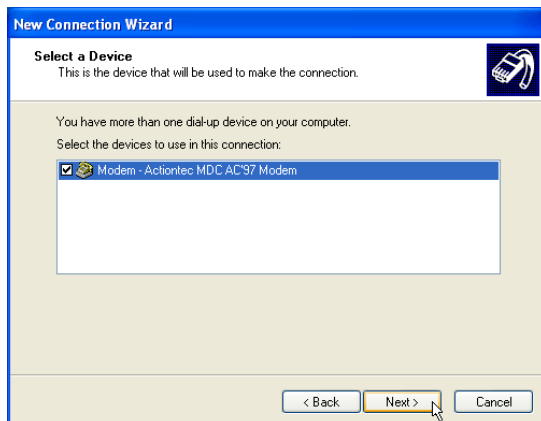
Modem Configuration (Cont')



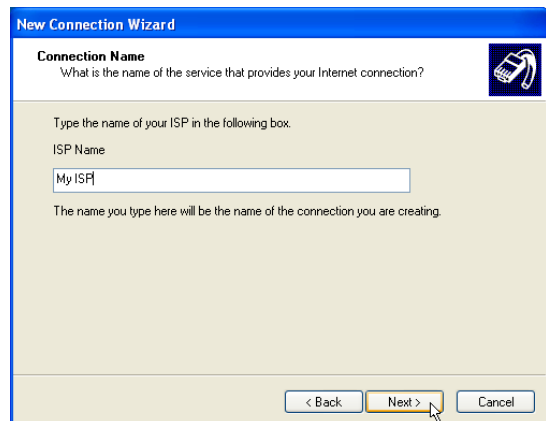
3. Select "Set up my connection manually" and click **Next**.



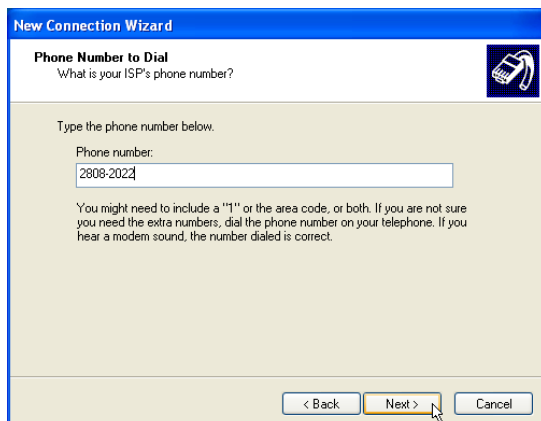
4. Select "Connect using a dialup modem" and click **Next**.



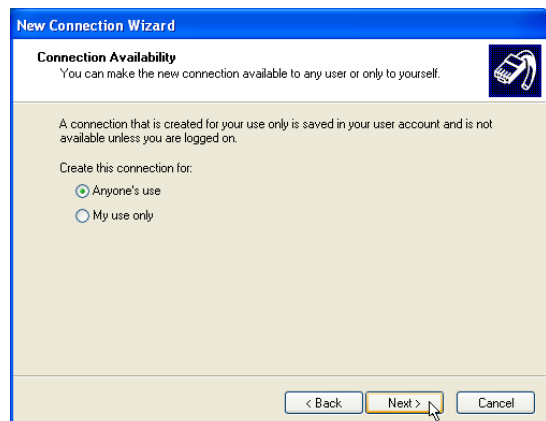
5. Select your modem and click **Next**.



6. Enter any name to represent your ISP.



7. Enter the dial up number for your ISP.



8. Selection one of the security preferences and click **Next**.

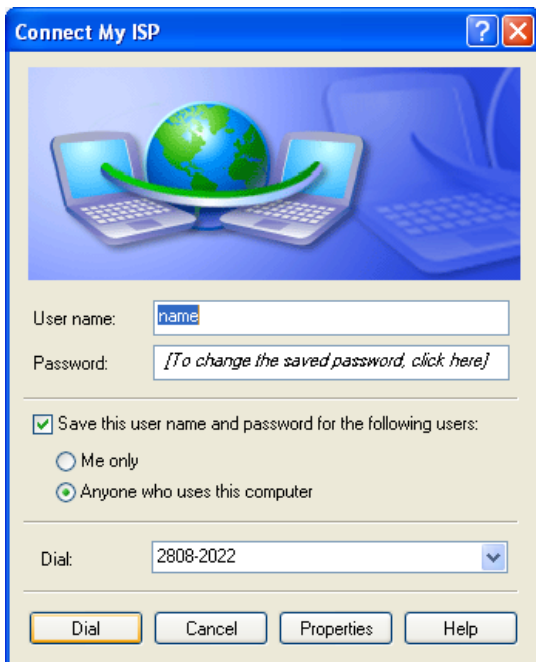
Modem Configuration (Cont')



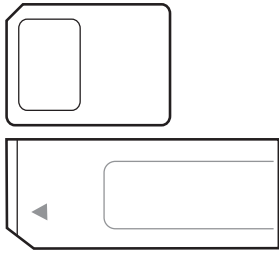
9. Enter your ISP account name and password and click **Next**.



10. Select "Add a shortcut..." and click **Finish**.



11. When you click on the link, the connection window will show. Click **Dial** to connect to your ISP.

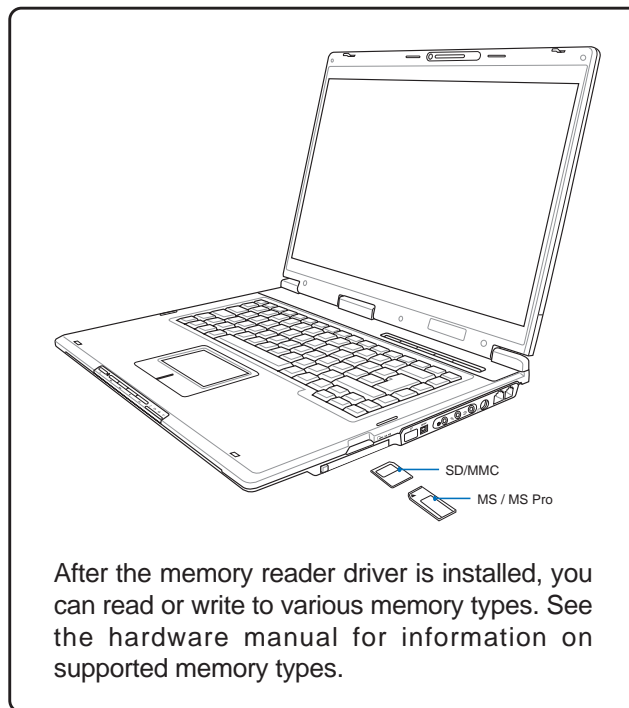


RICOH

(Optional driver)

Topics Covered:

Ricoh Media Driver Setup



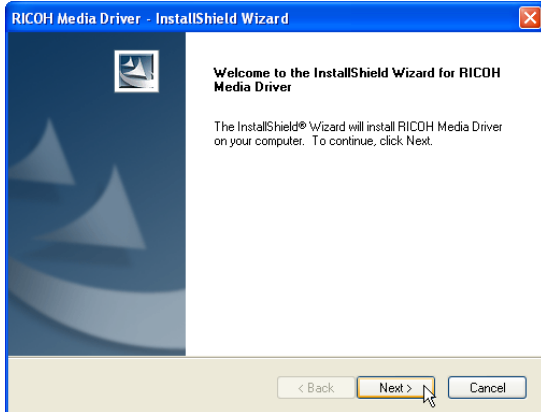
Driver already provided in Windows XP

- PCMCIA adapters
 - Ricoh R/RL/5C476(II) or Compatible CardBus Controller
 - Ricoh R/RL/5C476(II) or Compatible CardBus Controller

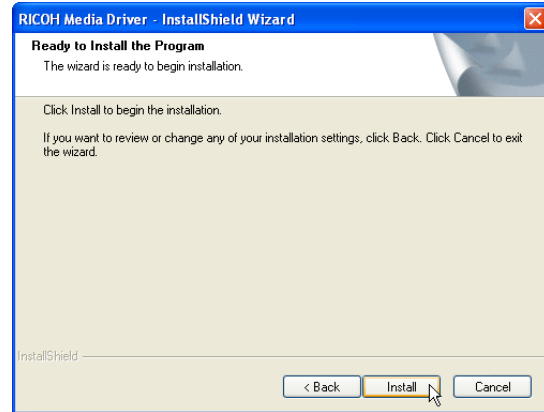
(Screens and drivers may vary depending on your model and operating system.)

Ricoh Driver Setup

Running setup will give you the following wizard:



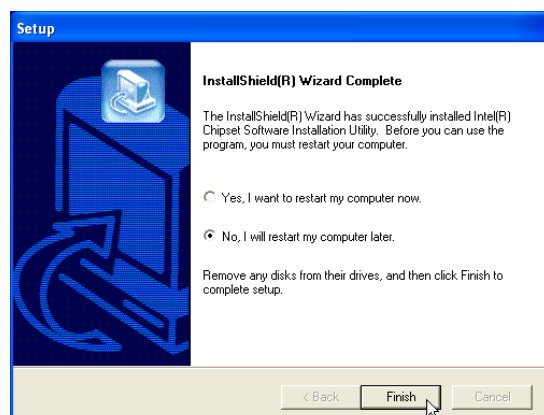
1. On the “Welcome” screen, click **Next** after confirming this is what you want to setup.



2. On the “Ready to install” screen, click **Install** to begin copying files to your system.



3. When complete, click **Finish**.



4. Setup is now complete, select “No...” and click **Finish** in order to install other items.

Software Utilities



ChkMail

(Optional Utility)

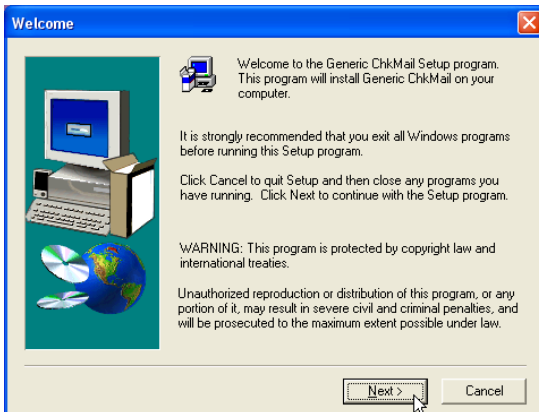
Topics Covered:

ChkMail Setup

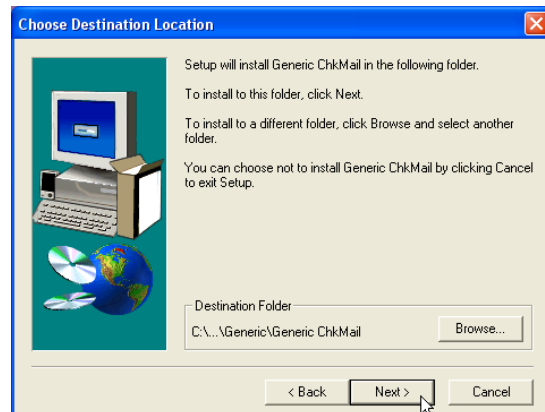
(Screens and drivers may vary depending on your model and operating system.)

ChkMail Setup

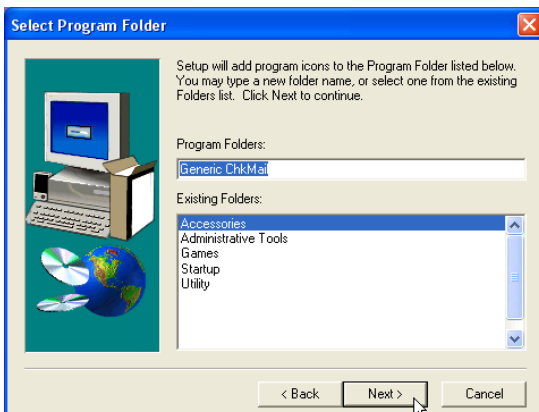
Running setup will give you the following wizard:



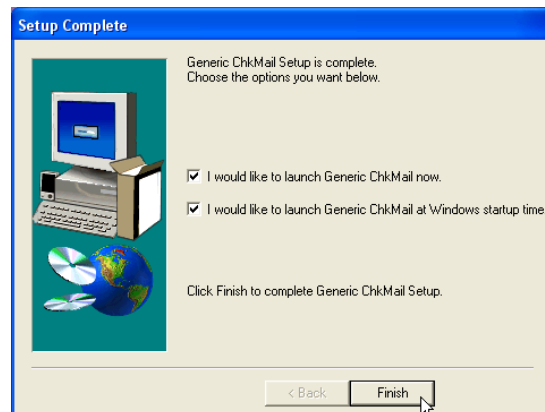
1. On the “Welcome” screen, click **Next** after confirming this is what you want to setup.



2. On the “Choose Destination Location” screen, click **Next** to continue or you may first change the destination folder.

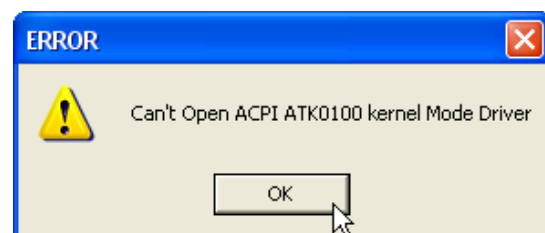


3. On the “Select Program Folder” screen, click **Next** to continue or enter a different folder name.



4. On the “Setup Complete” screen, click **Finish**.

NOTE: You cannot run this utility without first installing “ATK0100”. You will be given this message if you do not have the driver installed.



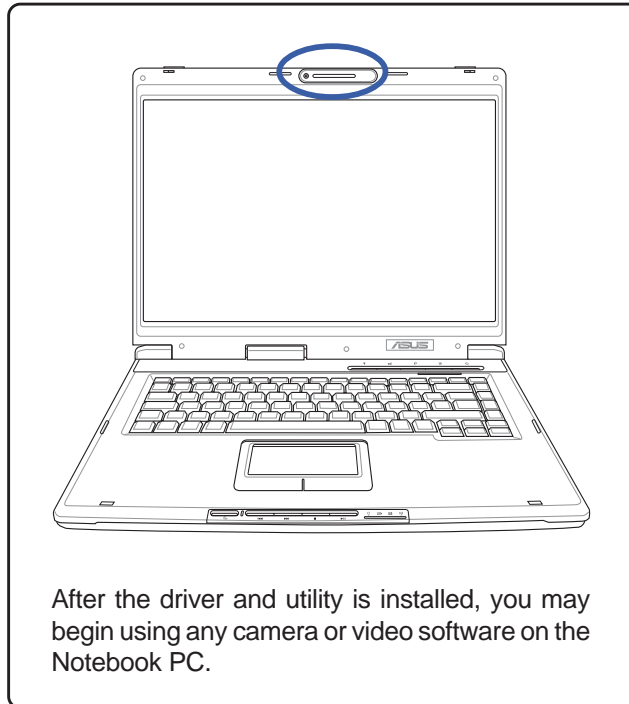


GameFace Live

GameFace

(Utility for selected models)

Topics Covered: **GameFace Utility Setup**

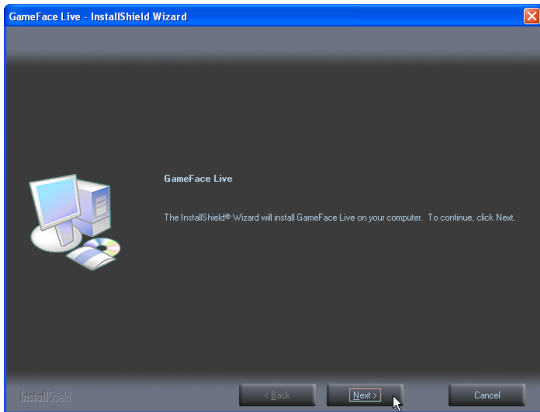


After the driver and utility is installed, you may begin using any camera or video software on the Notebook PC.

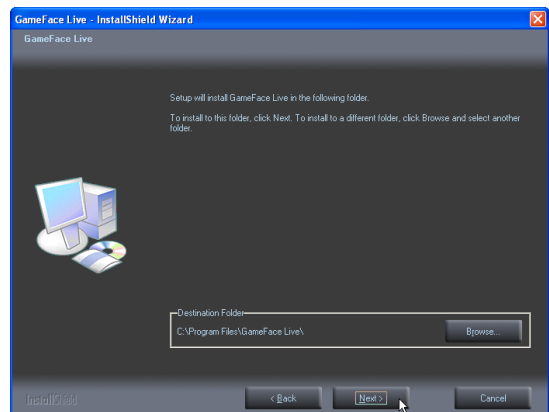
(Screens and drivers may vary depending on your model and operating system.)

GameFace Utility

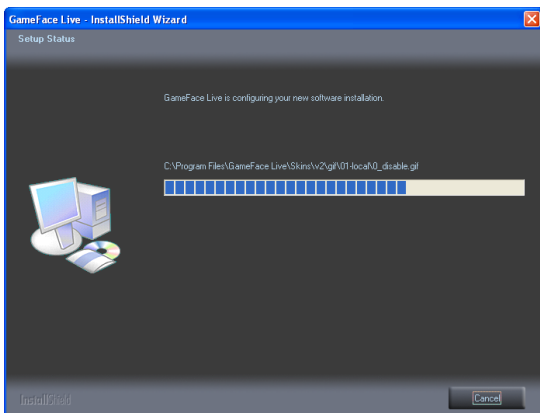
GameFace lets you talk to and see your friend on the remote computer even when you are playing full-screen game. Follow the installation wizard to complete the installation.



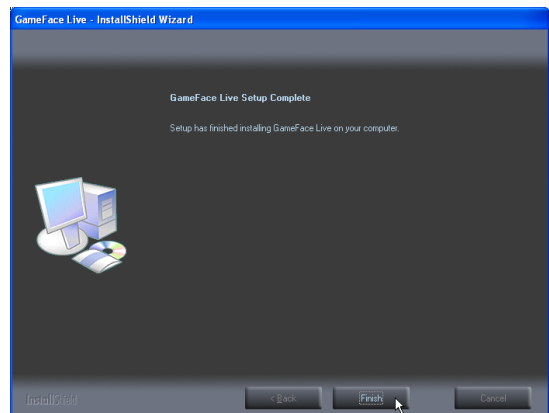
1. On the “Welcome” screen, click **Next** after confirming this is what you want to setup.



2. On the “Choose Destination Location” screen, click **Next** to continue or you may first change the destination folder.



3. Wait while files are copied to your system.

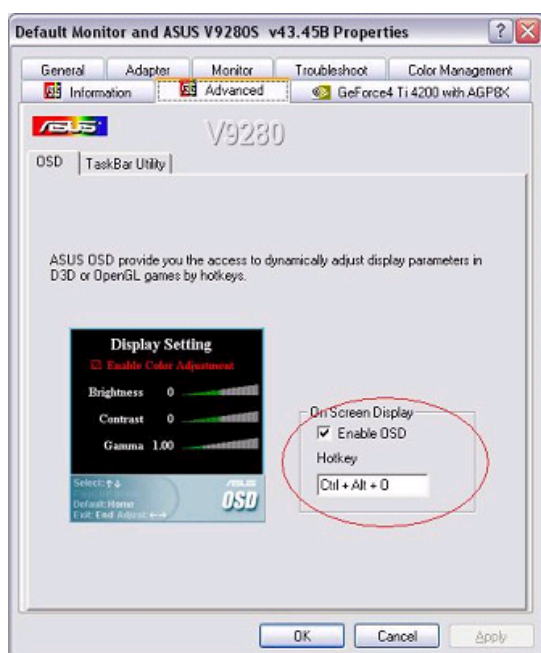


4. On the “Setup Complete” screen, click **Finish**.

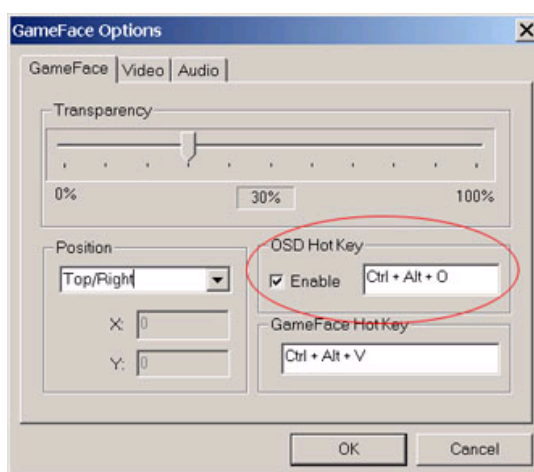
Getting Started

Enable ASUS OSD

1. Open Display Properties dialog from desktop or control panel
2. Press the Advanced button on the Settings page
3. Select the OSD page in the Advanced page
4. Check the Enable OSD check box and input the appropriate hotkey
5. Or we can enable OSD through the GameFace options in GameFace application



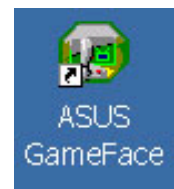
Enable OSD from display properties.



Enable OSD from GameFace options.

Launch GameFace

It will use the first Video/Audio WDM capture device it found when the first startup. You can change the Video and Audio input device from the Options in the Tool menu if you have more than one Video/Audio device. But the change will not take effect when you are playing video or connecting to others. You must stop or disconnect to make the change effect.



Local Playback Mode

1. Choose “Local Play/Stop” from the File menu to start local playback while local video is not playing
2. Choose “Local Play/Stop” from the File menu to stop local playback while playing local video
3. You can also press “Play/Stop” button to start or stop local playback



Network Playback Mode

1. Connect to Remote Computer:
2. Input the Computer Name (Local Area Network) or IP Address in the combo box
3. Choose the New Call from the “Call” menu or press the “Make a Call” button
4. You will both see and hear the remote video and audio if remote computer accept the call
5. If you have no idea about your computer name and IP address, you can use “Tool” -> “Info” to get that

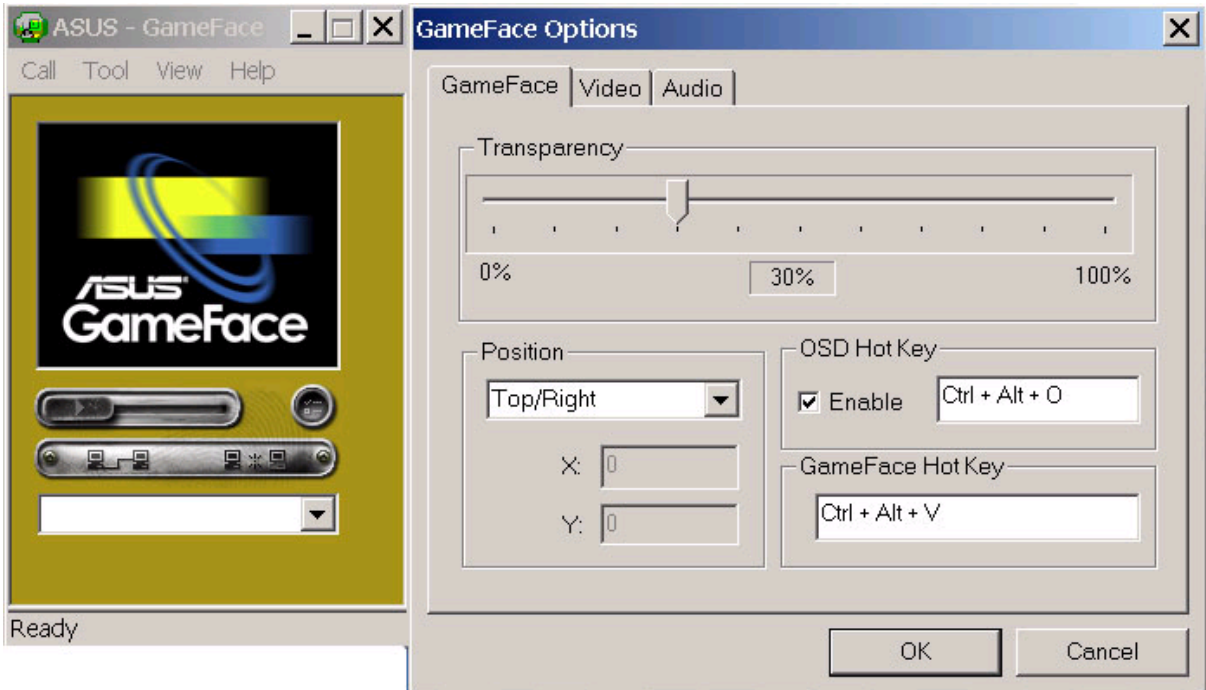
Waiting for connection:

1. Launch GameFace
2. GameFace will popup a dialog box to ask you if you want to accept a call from the remote computer
3. Choose the “End Call” from the File menu or press the “End the Call” button to disconnect the connection



GameFace Setting

You can change the Transparency, Position, and Hotkey settings in the GameFace page of GameFace Options Dialog from the Option in the Tool menu.



Launch Game And Show GameFace

Launch the game you want to play. After entering the full-screen mode, press Hotkey (default is Ctrl+Alt+V) to show the GameFace window.



(Captured from the game "Delta Force: Black Hawk Down")

Enable OSD in Game

Press OSD hotkey to show the OSD. Using Page-Up/Page-Down key to select the GameFace page. Using Arrow Key to select and adjust the items you want to change. (Enable GameFace, Transparency, Position X, Position Y, and Sizing).



The demo picture is captured from the game "Delta Force: Black Hawk Down"

Frequently Asked Questions

1. The record volume in Windows XP is too low.

Many sound cards have an option called “Microphone Boost” or “Mic Boost.” This feature boosts the input volume so that weak input devices can produce stronger inputs. If you determine that the input level from a system is too low for your voice session, you can enable microphone boost.

To enable microphone boost

1. Display the recording mixer
2. Enable the Advanced buttons on the mixer by choosing the Advanced command from the Options menu.
3. Click the microphone line’s Advanced button to display the microphone’s Advanced Controls dialog box.
4. Select the Microphone Boost check box.

If microphone boost makes your input too loud, you can use the same procedure to disable microphone boost. If your sound card does not support microphone boost, one or more of the following will be true. (from Microsoft DirectX document)

- The Advanced command on the recording mixer’s Options menu will be unavailable.
- The Advanced button in the recording mixer’s microphone section will be unavailable.
- The Microphone Boost check box on the Advanced Control dialog box will be unavailable

2. I cannot show GameFace when using an USB keyboard.

Currently, ASUS GameFace and OSD only support PS/2 keyboard.

3. How do I select a TV channel when using ASUS GameFace and TV Tuner input is selected?

ASUS GameFace does not currently support TV channel selection. Please use the ASUS Digital VCR (Ver. 2.5) instead.

4. The recording sound is noisy when I using the camera’s built-in microphone.

It is not recommended to use the camera’s built-in microphone because this kind of microphone is too sensitive. Therefore, you will hear many background noise. It is recommended to use a headphone with a microphone attached, that way the microphone will be close to your mouth.

5. I can not show the GameFace window in games.

You must have an ASUS Display card and install ASUS display driver 43.45D or above. Please check the system requirements in the readme text.

6. How do I use GameFace when my computer is behind a Firewall?

You must have the permission to change firewall settings. Using the port mapping function to map port number from 6050 to 6070 to your computer. For example, assume the virtual IP address of your computer is 192.168.0.3, map port service from 6050 to 6070 to the address 192.168.0.3. If both the remote computer and your computer are under the same firewall, you don’t need to set port mapping. But if the remote computer is behind another firewall, both computers will have to set port mapping.



LiveUpdate

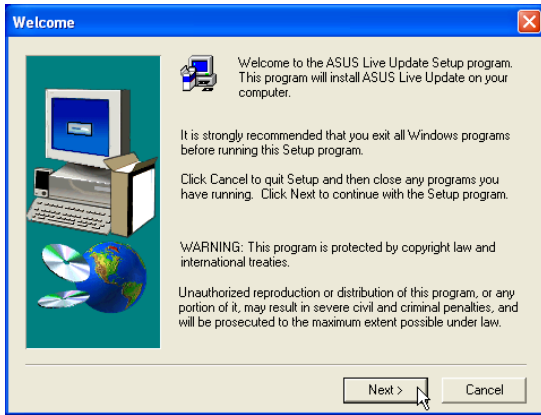
(Recommended utility)

Topics Covered:
LiveUpdate Setup
Using LiveUpdate

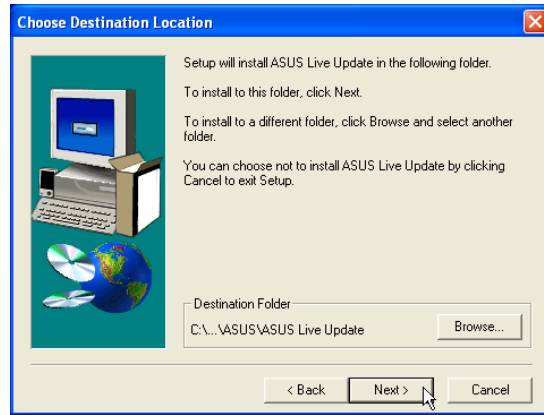
(Screens and drivers may vary depending on your model and operating system.)

LiveUpdate Setup

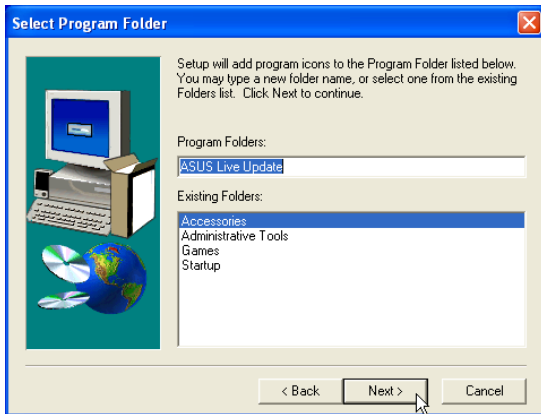
Running setup will give you the following wizard:



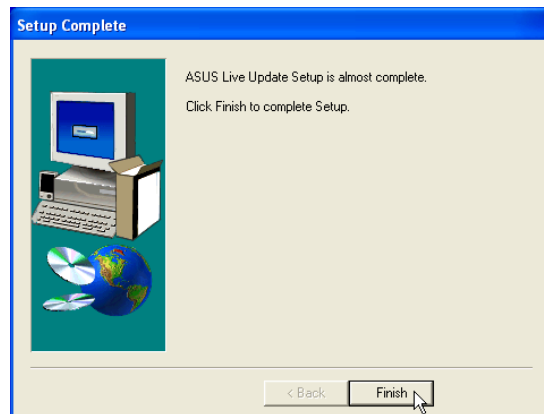
1. On the “Welcome” screen, click **Next** after confirming this is what you want to setup.



2. On the “Choose Destination Location” screen, click **Next** to continue or you may first change the destination folder.

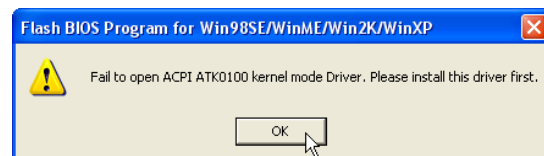


3. On the “Select Program Folder” screen, click **Next** to continue or enter a different folder name.

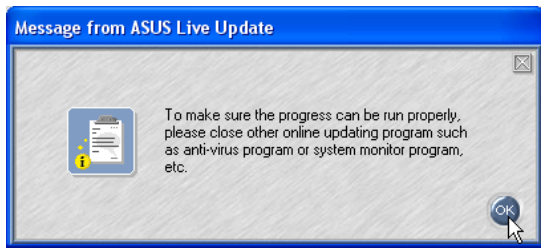


4. On the “Setup Complete” screen, click **Finish**.

NOTE: You cannot run this utility without first installing “ATK0100”. You will be given this message if you do not have the driver installed.



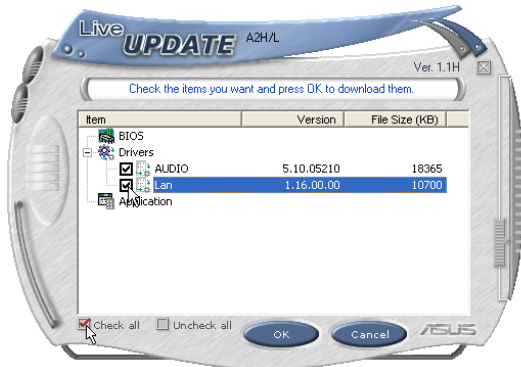
Using LiveUpdate



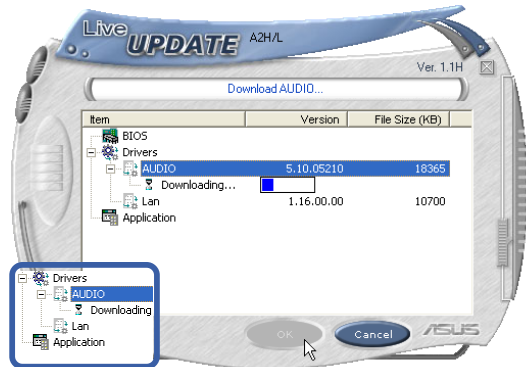
Close other software to ensure no conflicts.



Click **OK** to connect to the "Live Update" server.



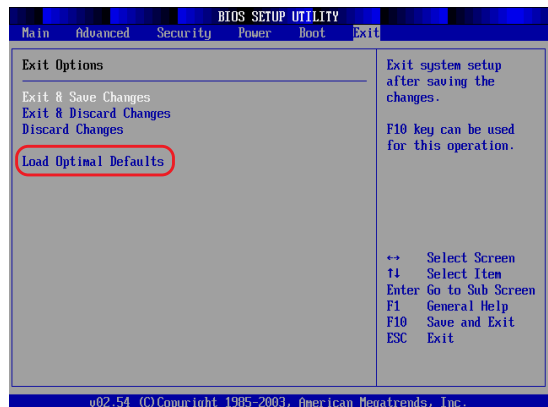
Newer versions will be shown. Check the items to update or select "Check all".



Click **OK** to download and install the update.



When update is complete, click **OK** to exit.



You may be instructed to "reset your BIOS". It entails pressing **[F2]** on bootup to enter BIOS setup and selecting **Load Setup Defaults**, and then **Exit Saving Changes** on the "Exit" menu.



Norton Internet Security

(Recommended utility)

Topics Covered:

Norton Internet Security Setup

Internet Proxy Settings

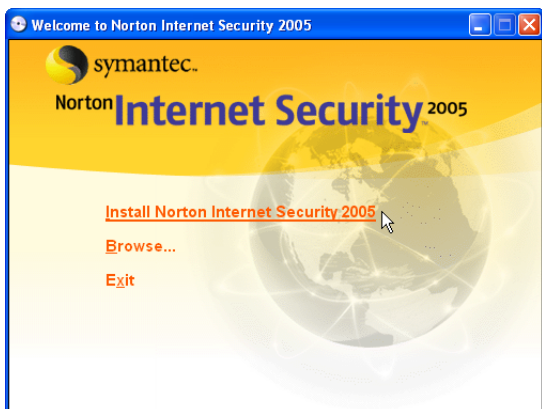
Internet Security Main Window

Internet Security Features

(Screens and drivers may vary depending on your model and operating system.)

Norton Internet Security Setup

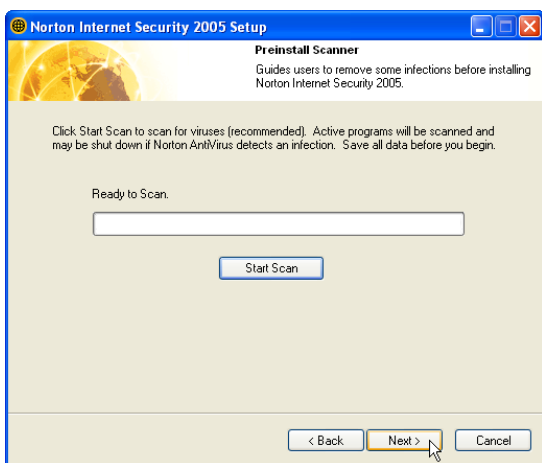
Running setup will give you the following wizard:



1. On the “Autorun” screen, click **Install Norton Internet Security 2005**.



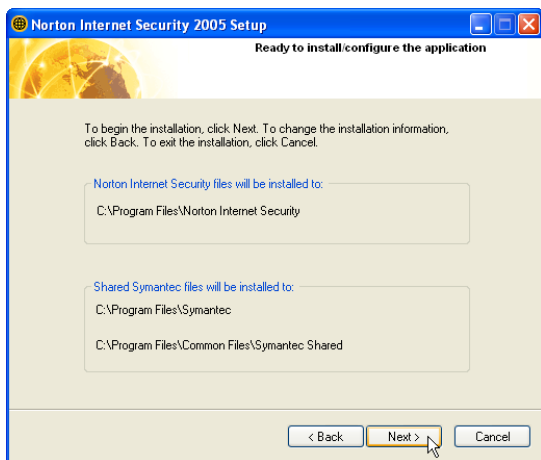
2. On the “Welcome” screen, click **Next** after reading.



3. On the “Preinstall Scanner” screen, click **Next** to skip if you are installing on a new system, otherwise you may click “Start Scan” if you are reinstalling on a used system.



4. On the “installation type” screen, click **Next** to continue or you may “Browse” to another destination folder or change other features using “Custom” installation.



5. On the “Ready to install” screen, click **Next** to continue or click “Back” to change settings.



6. When setup is complete, select “Restart Windows Later” and click **Finish** in order to install other items before restarting your system.



Norton
Internet
Security

A program icon will be placed on your desktop.

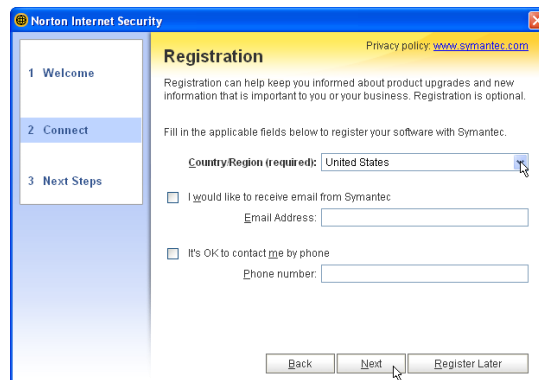


Norton Internet Security will startup each time with Windows. This icon will be placed in the taskbar to show that it is running and also to provide shortcuts to configuration items.

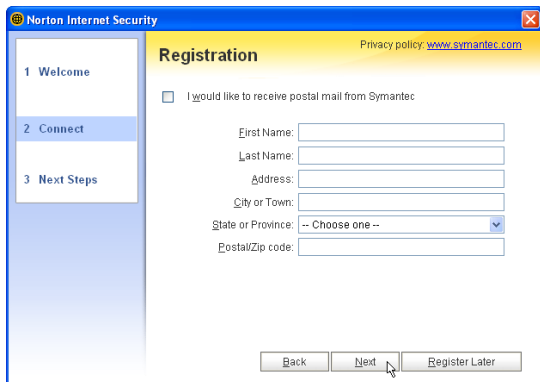
After Windows restart



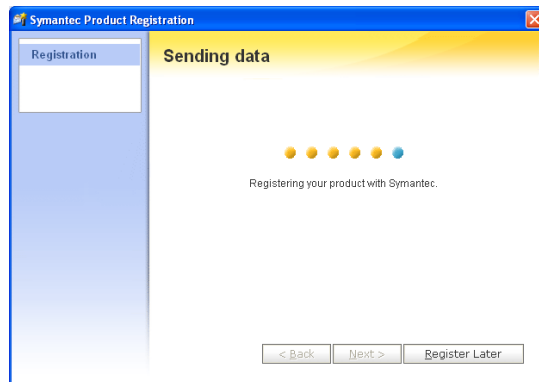
1. On the “License Agreement” screen, select “I accept...” and click **Next** to continue.



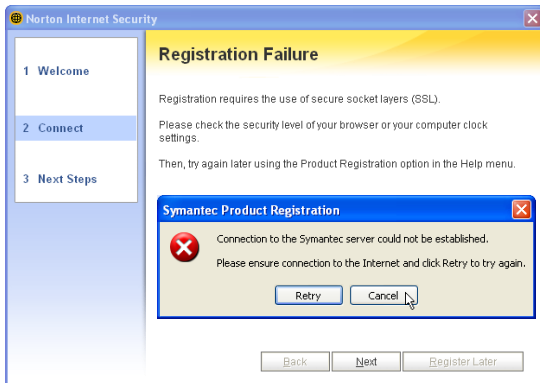
2. On the “Registration” screen, select “your country or region” and click **Next** to continue. You may give enter your information if you do not mind being contacted by Symantec.



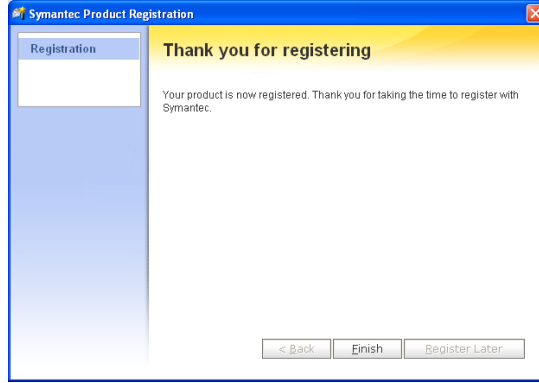
3. On the “Registration” screen, enter your information and click **Next** to continue. Checking “...postal mail from Symantec” is optional.



4. Your registration information will be sent to Symantec through the Internet.



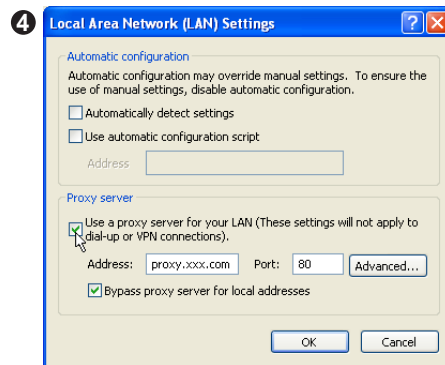
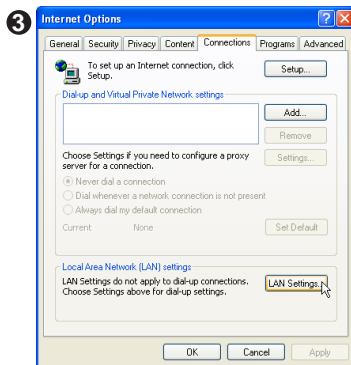
Check your Network and Internet settings if you cannot connect to the Symantec server.

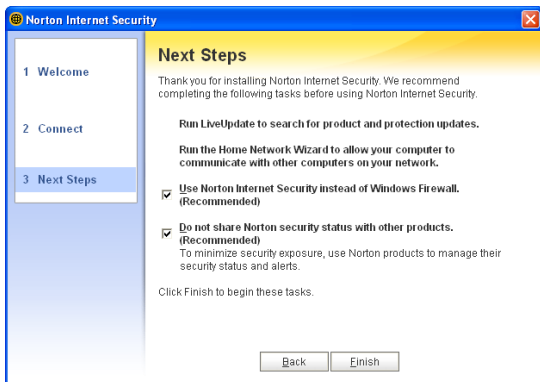


5. Click **Finish** when registration is complete.

Internet Proxy Settings

Internet access within a company network usually require proxy settings.

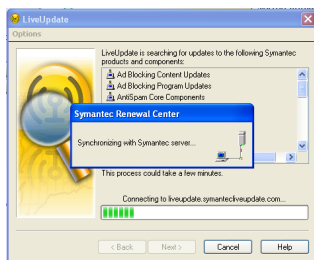




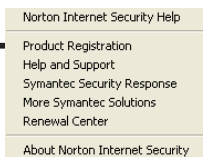
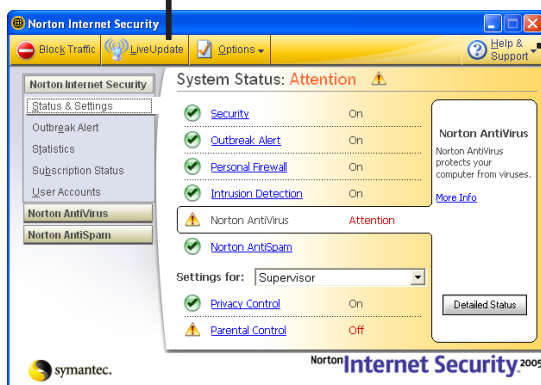
Click **Finish** to complete additional tasks.

Internet Security Main window

Open the main window from the program icon or the taskbar icon.



Click **LiveUpdate** to update the software and virus definitions.



Click **Help** for detailed descriptions and instructions for each function.

When you open the main window, you will see status for each function. When you have time, you can review each of the functions and make adjustments to your desire.

Internet Security Features

Virus and threat protection features

Norton AntiVirus provides comprehensive virus prevention, threat detection, and repair software for your computer. It automatically detects and repairs known viruses. Norton AntiVirus detects viruses and other potential risks in instant messenger attachments as well as in email messages, Internet downloads, and other files. Easy updating of the virus definitions over the Internet keeps Norton AntiVirus prepared for the latest threats.

Norton AntiVirus includes expanded threat detection of both known and emerging threats, such as spyware and other files that could put your computer at risk. Norton AntiVirus also scans files inside of compressed files.

As always, Norton AntiVirus features continually monitor your computer and protect it from known and unknown threats.

Security protection features

Norton Internet Security includes a suite of security tools that help keep your computer safe from security threats and privacy intrusions.

Personal Firewall

Protects your computer from Internet attacks, dangerous Web content, port scans, and other suspicious behavior.

Spam filtering features

As email becomes more popular, many users are receiving an increasing amount of the unsolicited commercial email messages known as spam. Not only does spam make it difficult to identify valid email messages, some spam contains offensive messages and images.

Norton AntiSpam incorporates several powerful features to reduce your exposure to unwanted online content.

Ad blocking features

Many Web sites are using more aggressive techniques to draw attention to the ads on their pages. Some have begun using larger, more prominent ads, while others rely on ad windows that appear when you enter or leave the site. Along with increasing the amount of time that it takes to display Web pages, some ads contain offensive content, cause software conflicts, or use HTML tricks to open additional browser windows.



Power4 Gear

(Required utility)

Topics Covered:

Power4 Gear Setup

Benefits of Power4 Gear

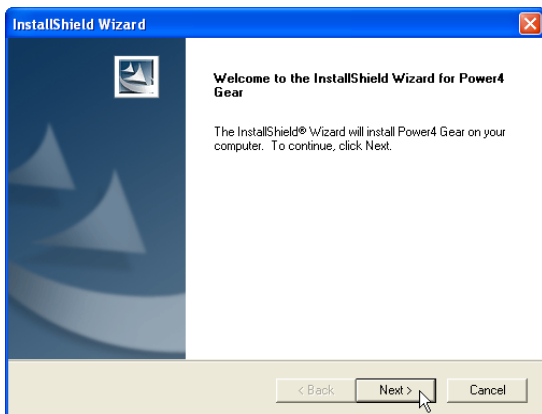
Power4 Gear Interface

Power4 Gear Configuration

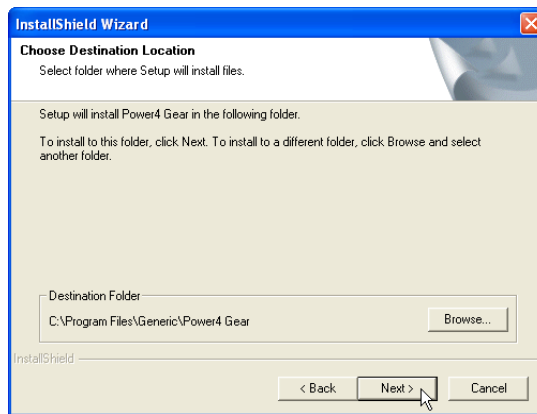
(Screens and drivers may vary depending on your model and operating system.)

Power4 Gear Setup

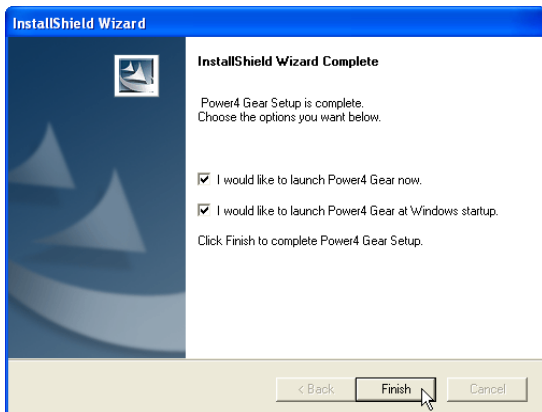
Running setup will give you the following wizard:



1. On the “Welcome” screen, click **Next** after confirming this is what you want to setup.

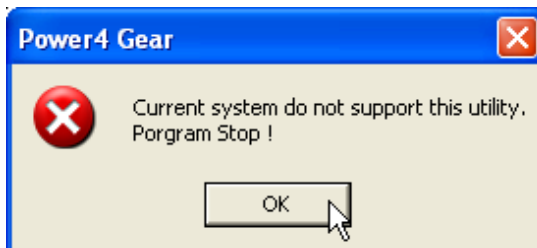


2. On the “Select Program Folder” screen, click **Next** to continue or enter a different folder name.



3. On the “Setup Complete” screen, click **Finish**.

NOTE: You cannot run this utility without first installing “ATK0100”. You will be given this message if you do not have the driver installed.













Benefits of Power4 Gear

Power4 Gear gives you control over power consumption items by allowing you to instantly “shift” from one power consumption scheme to another. The preferences or “gears” are shown below. You can change or “shift” gears by using the Power4 Gear button above the keyboard or by using the task bar icon. Power4 Gear can also be automatically activated when AC power is removed.

Power4 Gear Interface

Understanding the Power4 Gear buttons

Press the Power4 Gear button  above the taskbar to shift between the gears as labeled below. (The icon  may vary depending on your Notebook PC model.)

Icons	Mode Names	Power Segment
	Super Performance	AC
	High Performance	AC/DC
	Game Performance	AC/DC
	DVD Movie Performance	DC
	Email/Office Performance	DC
	Presentation Performance	DC
	Audio Listening Performance	DC
	Battery-Saving Performance	DC

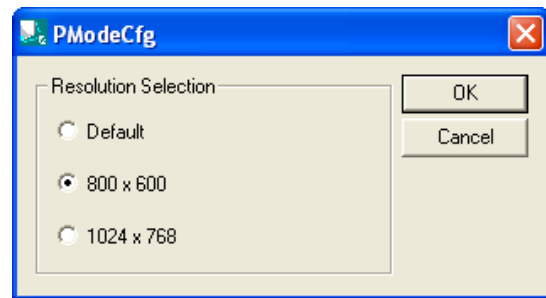
Program Icons

From Windows Start – Programs, you will find Power4 Gear folder containing **PMode Config** and **Power4 Gear** icons.



PMode Configuration

Use PMode Config to set the display output resolution to be used in conjunction with “Presentation” mode.

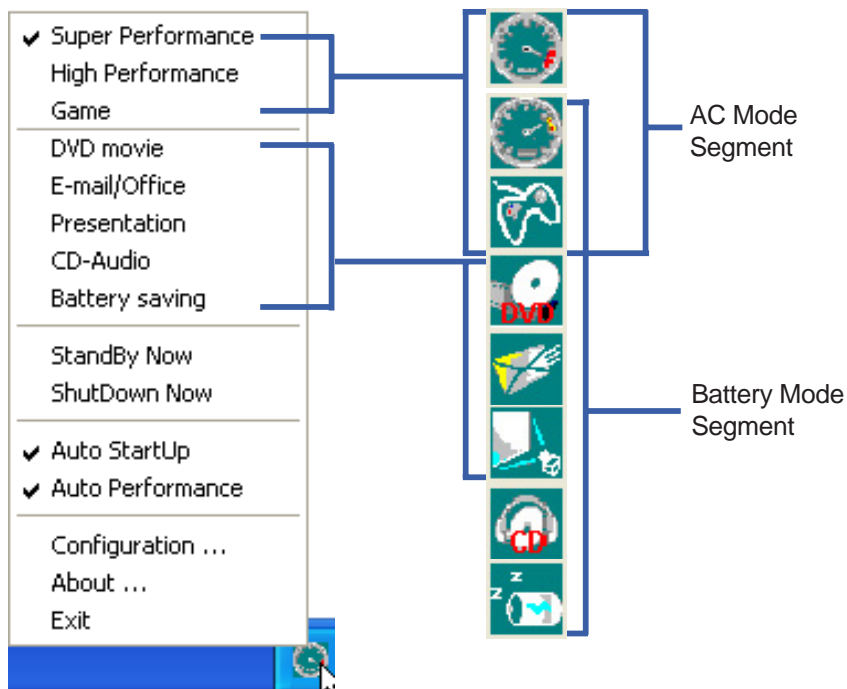


Power4 Gear

Power4 Gear starts automatically with Windows. You can right-click the icon on the taskbar for quick access to Power4 Gear settings.

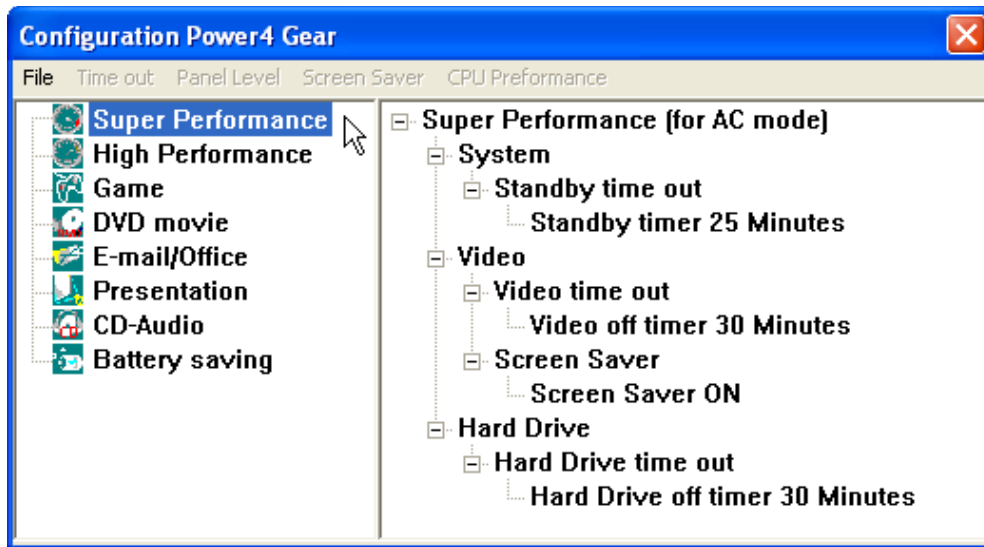
Modes and Power Segments

When you are using an AC adapter, the Power4 Gear button will allow switching between three modes as shown above. When you remove the AC adapter, the Power4 Gear button will allow switching between seven modes as shown above. When you remove or apply the AC adapter, Power4 Gear will automatically shift you up or down into the proper mode segment.



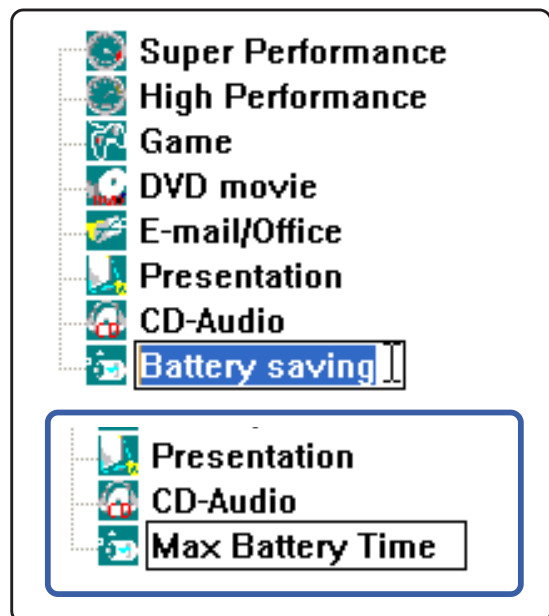
Power4 Gear Configuration

Double click an item to bring up a menu of selections and click on a value to change. To save, select “Save Configuration” from the “File” pull-down menu. If you did not save, you will be prompted to when you exit. If you change Windows “Power Options Properties,” those settings will also be reflected in Power4 Gear and vice versa.



Renaming Settings

You can rename the power saving levels as you like using the same method to rename files or folders in Windows. In the example on the right, the brightness level is decreased to 13% and the name is changed to “Max Battery Time”.



Power Saving Details

Double click an item to view possible settings. Some power saving items are only available under certain modes.

CPU Performance

- [-] System
 - [-] Standby time out
 - Standby timer 5 Minutes
 - [-] CPU Performance
 - Performance level 32%
 - 100%
 - 64%
 - 32%

System Standby Timer

- [-] System
 - [-] Standby time out
 - Standby timer 25 Minutes
 - 1 Minute
 - 2 Minutes
 - 3 Minutes
 - 5 Minutes
 - 10 Minutes
 - 15 Minutes
 - 20 Minutes
 - 25 Minutes
 - 30 Minutes
 - 45 Minutes
 - 1 Hour
 - 2 Hours
 - 3 Hours
 - 4 Hours
 - 5 Hours
 - Never

Hard Drive Off Timer

- [-] Hard Drive
 - [-] Hard Drive time out
 - Hard Drive off timer 30 Minutes
 - 1 Minute
 - 2 Minutes
 - 3 Minutes
 - 5 Minutes
 - 10 Minutes
 - 15 Minutes
 - 20 Minutes
 - 25 Minutes
 - 30 Minutes
 - 45 Minutes
 - 1 Hour
 - 2 Hours
 - 3 Hours
 - 4 Hours
 - 5 Hours
 - Never

Display Panel Brightness

- [-] Video
 - [-] Panel Light
 - Brightness level 33%
 - 6%
 - 13%
 - 20%
 - 26%
 - 33%
 - 40%
 - 46%
 - 53%
 - 60%
 - 66%
 - 73%
 - 80%
 - 86%
 - 93%
 - 100%

Display Panel Off Timer

- [-] Video
 - [-] Video time out
 - Video off timer 30 Minutes
 - 1 Minute
 - 2 Minutes
 - 3 Minutes
 - 5 Minutes
 - 10 Minutes
 - 15 Minutes
 - 20 Minutes
 - 25 Minutes
 - 30 Minutes
 - 45 Minutes
 - 1 Hour
 - 2 Hours
 - 3 Hours
 - 4 Hours
 - 5 Hours
 - Never



NB Probe

(Recommended Utility)

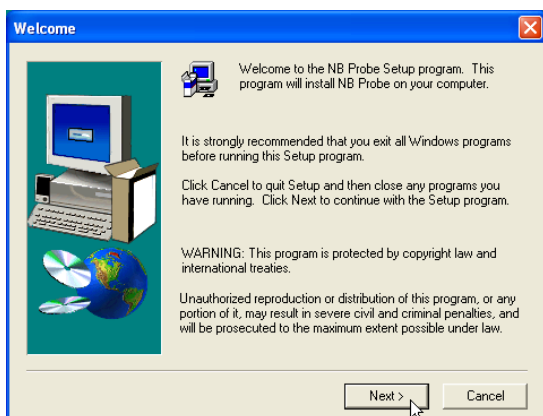
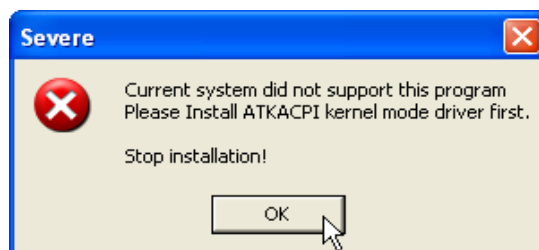
Topics Covered:
NB Probe Setup
Using NB Probe

(Screens and drivers may vary depending on your model and operating system.)

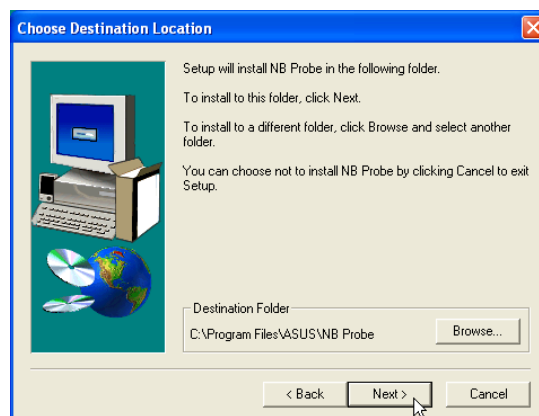
NB Probe Setup

Running setup will give you the following wizard:

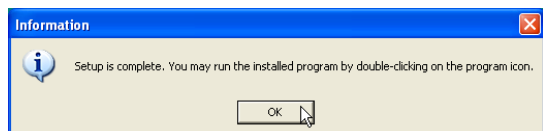
NOTE: You cannot run this utility without first installing “ATK0100”. You will be given this message if you do not have the driver installed.



1. On the “Welcome” screen, click **Next** after confirming this is what you want to setup.



2. On “Choose Destination Location”, click **Next** to continue or enter another destination folder.




3. When setup is complete, click **OK** to exit.

Using NB Probe

NB Probe is a convenient utility to continuously monitor your computer system's vital components, such as fan rotations, voltages, and temperatures. It also has a utility that lets you review useful information about your computer.

Starting NB Probe

NB Probe runs either in windows mode or taskbar mode. When you first start NB Probe from the desktop icon or from Windows Start, it will run in taskbar mode. Click the taskbar icon  once to run it in windows mode.



Windows XP Taskbar

Windows XP will hide some taskbar items. Click the arrow to show running services.



The screenshot shows the NB Probe application window with the following labels and descriptions:

- Click for computer**: Points to the computer icon in the top left.
- Click for CPU**: Points to the CPU Temp tab.
- Click for Drive**: Points to the Drive tab.
- Click for System**: Points to the System Information tab.
- Click to minimize to**: Points to the minimize button in the top right.
- Click to exit NB**: Points to the close button in the top right.
- Click to visit ASUS**: Points to the ASUS logo in the top right.
- See CPU & Fan**: Points to the Hardware Sensor section.
- See Disk status here**: Points to the Disk -- S.M.A.R.T. section.
- See Disk space here**: Points to the Drive -- Utilization section.
- Computer name**: Points to the 'DOC-ENG' label.
- Computer status**: Points to the 'Normal' status indicator.
- Warning Alarms ON/OFF**: Points to the 'Alerter (Enabled)' button.

Component	Value
CPU Temperature	51 °C
CPU Fan	2200 RPM
CPU Speed	100 %

Model	Status
HTS548080M9AT00	Normal
TSSSTcorpCD/DVDW TS-L532A	NA

Drive	Utilization
C:	19 %
D:	13 %
E:	0 %

Warning Alarms

Audible warning alarms are enabled by default, click once to Disable and once to Enable.



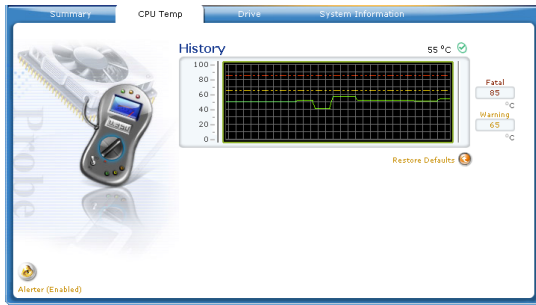
Alerter (Enabled)



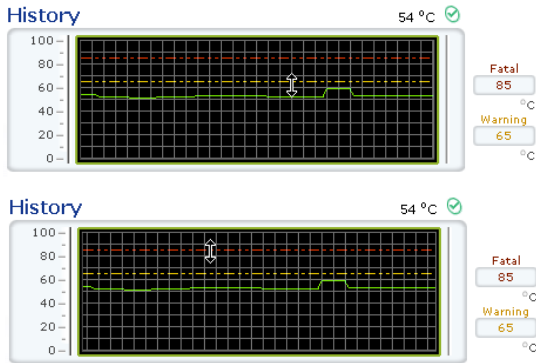
Alerter (Disabled)

Using NB Probe Monitoring

CPU Temp

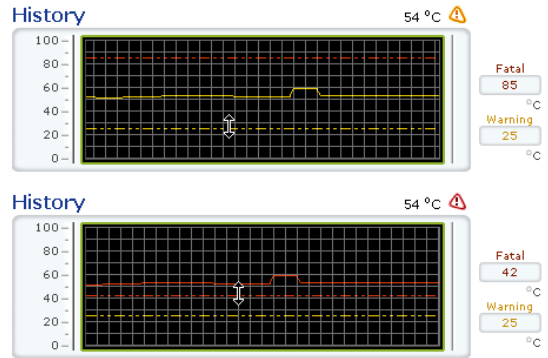


See your CPU temperatures logged using a green line. The orange line is the default warning threshold and the red line is the default fatal threshold.

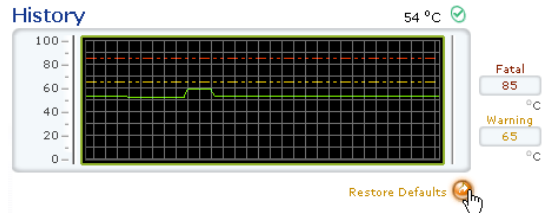


Click and drag the warning (orange) or the fatal (red) lines up or down with your cursor.

Temp Threshold Adjustment



If the warning or fatal lines rise above the CPU temperature line (green), then the CPU temperature line (green) will turn orange or red to show a warning or fatal condition.



Click Restore Defaults to return the warning and fatal thresholds to their factory defaults. As you see here, the condition returns to normal (check mark icon).

Using NB Probe Monitoring (Cont')

Drive

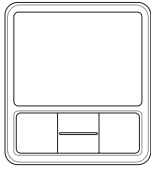


System Information



See your system information on this page.

Shows the used and free space of each hard disk drive and the file allocation table or file system used. Information on other hard drives can be accessed by clicking on the relevant drive letter. For DVD drives, the region code is displayed under the picture of the optical drive.



TouchPad

(Recommended Utility)

Topics Covered:

TouchPad Setup

Overview of the TouchPad

Scrolling Properties Page

Tap Zones Properties Page

More Features Properties Page

Button Actions Properties Page

Touch Properties Page

Edge Motion Properties Page

Frequently Asked Questions

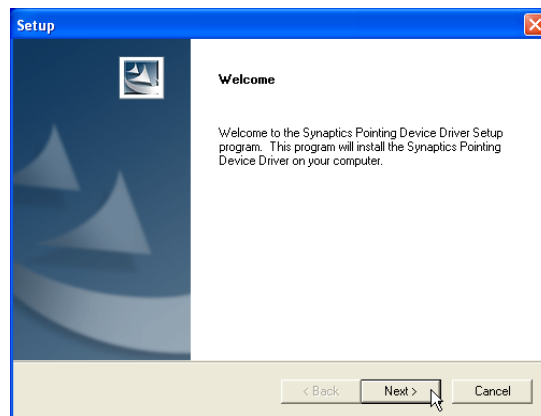
(Screens and drivers may vary depending on your model and operating system.)

Touchpad Setup

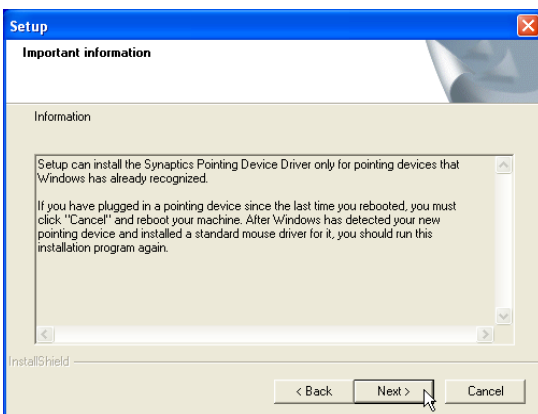
Running setup will give you the following wizard:



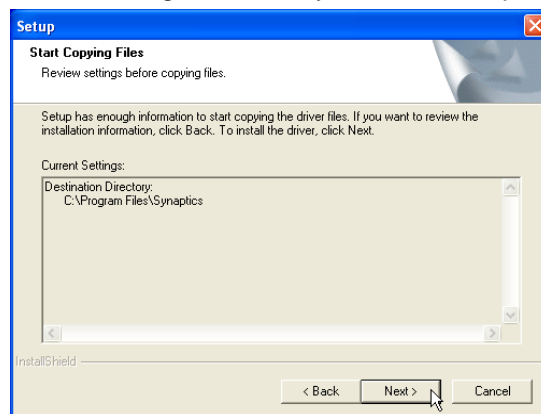
1. On the “Choose Setup Language” screen, select a language and click **OK** to continue.



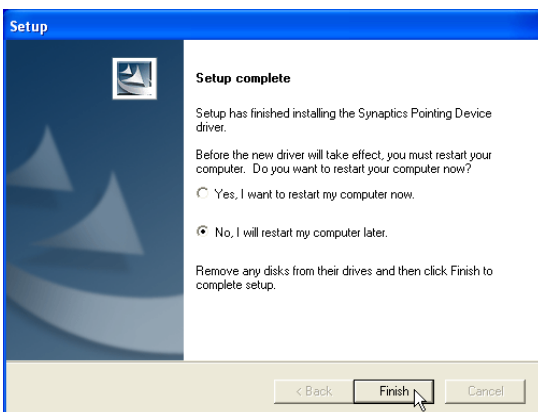
2. On the “Welcome” screen, click **Next** after confirming this is what you want to setup.



3. On the “Information” screen, click **Next** after reading.



4. On the “Start Copying Files” screen, click **Next** after confirming the current settings.



5. On the “Setup Complete” screen, select “No,...” and click **Finish**.



6. You can deselect the welcome screen from appearing each time you start Windows.

Synaptics® TouchPad Features

Your Synaptics TouchPad is much more powerful than an old-fashioned mouse. In addition to providing all the features of an ordinary mouse, your TouchPad allows you to:

- Tap on the Pad Instead of Pressing the Buttons
- Drag Icons, Windows and Other Objects without Using Buttons
- Adjust the Overall Touch Sensitivity
- Customize Buttons and Taps
- Prevent Accidental Pointing While Typing (also known as Palm Check)
- Scroll Through a Document Without Using Scroll Bars
- Zoom In/Out and Pan on Documents
- Move the Pointer Long Distances
- Fine Tune the Pointer Movement

Tap on the Pad Instead of Pressing the Buttons

Tapping on the surface of the pad is the same as clicking the left mouse or TouchPad button (i.e. the primary TouchPad button). Tapping is usually quicker and more convenient than using the button. To double-click, just tap twice. A light, quick tap works best; very hard or very slow taps are less likely to work.

Drag Icons, Windows and Other Objects without Using Buttons

Often, you need to hold the mouse or TouchPad button down while moving the pointer (to move an icon or window around the screen, for example). This action is called dragging. Just like clicking and double clicking, you can also drag without using the button.

To move or drag an object (equivalent to pressing and holding the left TouchPad button):

- 1) Position the pointer over the object and tap twice, down-up-down, leaving your finger on the TouchPad on the second tap. This action is sometimes called tap-and-a-half.
- 2) Now move the selected object by sliding your finger across the TouchPad surface.
- 3) Lift your finger to drop the object.

Tap-and-a-Half

You might wonder what happens when you reach the edge of the pad and you are dragging an object. The Synaptics TouchPad has a feature called Locking Drags. This feature allows you to lift your finger from the pad without ending the drag. You can drag an object across the screen using several finger strokes. To end a Locking Drag action, tap again. The Synaptics TouchPad also has a feature called Edge Motion to help with long distance dragging. See Move the Pointer Long Distances for details.

The Tap and Drag and Locking Drags features are located on the Touch Properties Page in the Mouse Properties dialog.

Adjust the Overall Touch Sensitivity

You can control how much finger pressure you must apply before the TouchPad responds by adjusting the Touch Sensitivity slider. This slider is located on the Touch Properties Page in the Mouse Properties dialog.

At higher (more sensitive) Touch Sensitivity settings, the TouchPad recognizes even a very slight touch. If you see undesired or erratic pointer motion, try a lower setting. Lower (less sensitive) settings require a firmer touch to move the pointer. In general, a lighter touch works best.

Customize Buttons and Taps

Most TouchPads come with two buttons that work just like traditional mouse buttons. You can customize the behavior of these buttons.

Tapping on the TouchPad surface also performs the same action as pressing a button. Tapping in the center of the pad will always produce a left-click (the action of the primary button), but you can configure each of the four corners of the TouchPad surface to act as different buttons. These special corner regions are called tap zones. With four corner tap zones, the center of the TouchPad, and the two physical buttons you can turn your TouchPad into a seven-button mouse!

A customization example:

Suppose you want to use your TouchPad like a three-button mouse. You can configure the left TouchPad button to produce middle clicks when pressed. Remember that tapping on the TouchPad will produce left clicks, and pressing the right TouchPad button will produce right clicks. For additional convenience, you can configure the top right corner tap zone of the TouchPad to produce right clicks. Looking at the TouchPad surface in the picture below, taps in the top right corner (the red shaded area) will produce right clicks, but tapping anywhere else on the TouchPad (the solid gray area) produces left clicks.

An Example TouchPad

There are many different actions that you can assign to the buttons and tap zones. The following actions are provided as built-in features with the Synaptics TouchPad device driver. Additional actions might be available if you have installed any third-party TouchPad Plug-In software.

- Jump to the Start Button. This action causes the pointer to jump to the Start button in the Windows task bar and automatically opens the Start Menu.
- Jump to the current application's menu. This action causes the pointer to jump to the left-most entry in the application's window menu (usually the File menu) and automatically pops up the submenu.
- Minimize the current application. This action minimizes the current application's window. If the current application's window is already minimized, this action will restore it to its normal size and location.
- Maximize the current application. This action maximizes the current application's window (expands it to cover the full screen). If the current application's window is already maximized, this action will restore it to its normal size and location.
- Run a program of your choosing. This action allows you to specify the name of any program you want to run automatically when you click the button or tap in the tap zone.

To customize taps and buttons, go to the Button Actions Properties Page in the Mouse Properties dialog.

Prevent Accidental Pointing While Typing

Unintentional pointer movement and accidental taps can be caused by accidentally brushing the surface of the TouchPad with your palm or another part of your hand. The results of this contact can be observed as a changing cursor location when typing, causing subsequent text to appear in the wrong place. Or text may “spontaneously” be highlighted and replaced. Most often, this unwanted pointing activity occurs when typing on the keyboard. The TouchPad can detect and prevent accidental and unwanted pointer movement while you are typing.

If you see unwanted pointer movement occurring while you are typing, you can adjust the Palm Check slider located on the Touch Properties Page in the Mouse Properties dialog. Move the slider thumb to the right towards Maximum. Now accidental brushes of your hand on the TouchPad while you are typing are more likely to be ignored.

On the other hand, in the midst of typing, you might purposefully use the TouchPad to point and click, and sometimes the TouchPad may not seem to respond. In this case, move the slider thumb to the left towards Minimum. Now pointing during typing is less likely to be interpreted as an accidental brush with the pad surface, and will not be ignored.

Scroll Through A Document without Using Scroll Bars

Virtual Scrolling allows you to perform a very common task – scrolling documents – without having to move the pointer away from your work. By simply sliding your finger up and down the right edge of the TouchPad, the contents of the current window will scroll vertically. Similarly, by sliding your finger left and right along the bottom edge of the TouchPad, the contents will scroll horizontally. You no longer need to laboriously maneuver the pointer to the small scroll bar elements; you can scroll no matter where the pointer happens to be.

Virtual Scrolling works with document windows (like word processors and spreadsheets), and it also works with file lists, font lists, and other scrollable items. As a rule, you can use Virtual Scrolling when you are working in any window that has a scroll bar.

And Virtual Scrolling does more than just make scrolling more convenient. It also can make scrolling smoother. When you scroll by dragging the scroll thumb with the mouse, many applications do not re-display the document window until you release the mouse button. Virtual Scrolling makes navigation through documents easier, because it forces the application to re-display the window contents as you scroll.

How do I use Virtual Scrolling?

To customize the Virtual Scrolling feature, go to the Scrolling Properties Page located in the Mouse Properties dialog.

Zoom In/Out and Pan on Documents

Note that zooming and panning only work in applications that support the Microsoft Intellimouse. With Intellimouse aware applications, you can zoom and/or pan to quickly maneuver your way through lengthy documents. To jump to a distant location within your document, zoom out, click on the desired location, then zoom in. To scroll horizontally and vertically at the same time, simply pan in a diagonal direction!

Move the Pointer Long Distances

Suppose you are dragging an object, scrolling at high speed (via Virtual Scrolling!), or merrily moving the pointer when you suddenly reach the edge of your TouchPad. Don't despair, the Synaptics TouchPad Edge Motion feature comes to the rescue! Edge Motion helps with long distance pointer motion. When you reach an edge of the TouchPad, the pointer (or scroll thumb when Virtual Scrolling) continues to move in the same direction until you lift your finger from the TouchPad or move your finger away from the edge.

Edge Motion speed can be pressure-sensitive or constant. Pressure-sensitive speed means that the harder you press, the faster the object or pointer moves.

You can configure the Edge Motion feature on the Edge Motion Properties Page in the Mouse Properties dialog.

Fine Tune the Pointer Movement

The Synaptics TouchPad has many additional features to help you control the way your pointer moves. Please take a look at the list of additional features.

Accessories

Your TouchPad is a productivity enhancing tool, designed for serious work. But we think it should also be fun. We have included two fun application programs that demonstrate some of the capabilities of the TouchPad: Pressure Graph and The Incomparable, Mysterious Synaptics MoodPad.

To run these applications, click once on the Synaptics TouchPad Icon in the Taskbar, go to the Accessories menu and select the desired application.

More About the TouchPad

The TouchPad detects your finger by capacitive sensing (it is not sensitive to heat or applied force). As your finger approaches the pad, it alters the electric field in the vicinity of the pad surface. The TouchPad sensor is just a circuit board with a matrix of conductive traces printed on the top surface. A special chip on the back side of the TouchPad continuously measures the capacitance of these traces, and thus can determine the presence and location of your finger.

To get the most out of your TouchPad, be sure that the TouchPad driver software is installed. If the Synaptics TouchPad driver is properly installed, the Mouse Properties dialog will include several TouchPad tabs along the top in addition to the standard mouse tabs.

Property Pages

The property pages allow you to customize TouchPad settings for your Notebook PC. The following pages will describe each property page with the Synaptics logo. The "Buttons", "Pointers", and "Pointer Options" pages come with Windows and should be described in Windows documentation.

Scrolling Properties Page

The Scrolling properties page allows you to customize the Virtual Scrolling capabilities of your TouchPad.

In some applications, the scroll zones which activate Virtual Scrolling can be used for zooming too.

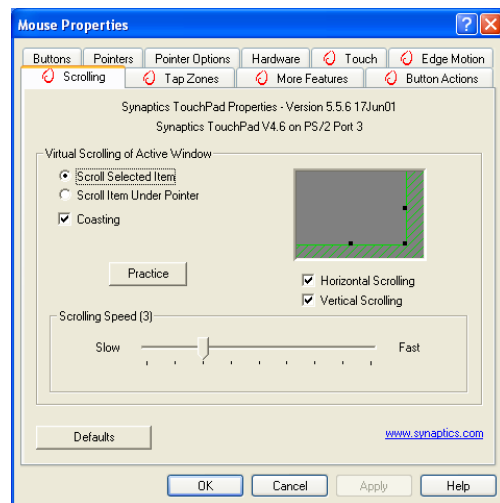
Enabling Virtual Scrolling of the Active Window

Check the appropriate boxes on this page for the type of Virtual Scrolling that you prefer:

- Horizontal Scrolling
- Vertical Scrolling
- Coasting

Choose where you want Virtual Scrolling to occur:

- Scroll Selected Item
- OR -
- Scroll Item Under Pointer



Customizing Scroll Zone Sizes

This page includes a small map of the TouchPad with the scroll zones shaded in red. See the Scroll Zone TouchPad Map for a more detailed description.

You can adjust the size of each zone by dragging one of the black resize handles on the TouchPad map. If you are having trouble activating the Virtual Scrolling feature, you might want to try making the scroll zones wider. If you find that scrolling sometimes gets activated when you didn't mean to scroll, try narrowing the scroll zones.

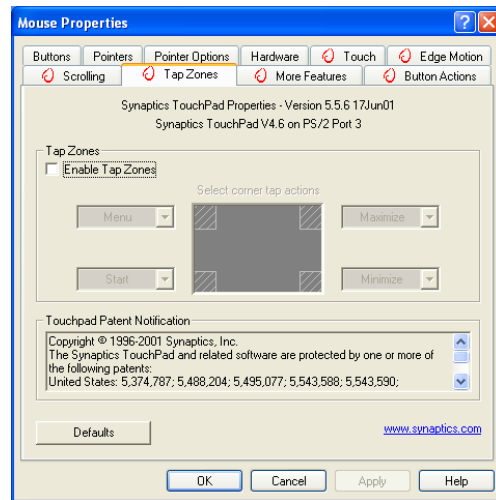
Customizing Virtual Scrolling Speed

You can control the speed of Virtual Scrolling by adjusting the Scrolling Speed slider on this page. Drag the slider thumb to the right for faster scrolling.

Tap Zones Properties Pages

The Tap Zones properties pages allow you to assign custom actions to taps in the Touchpad's corner zone regions (or tap zone regions).

The Synaptics TouchPad driver may also control other pointing devices attached to your system. If the Synaptics TouchPad driver is controlling more than one pointing device on your system, the Synaptics pages on the Mouse control panel will have a drop-down box listing all of the pointing devices that are controlled. You may set separate settings for each by selecting the appropriate device (settings which don't apply to a particular pointing device will be grayed out).



Customizing the Tap Zones

When the tap zones are enabled, each tap inside a corresponding tap zone region on your TouchPad can have a different meaning or action. For example, you can define the upper right corner tap zone to mean right clicks. Then when you tap your finger on the upper right corner of your TouchPad, it is as if you are clicking the right mouse or TouchPad button.

This page includes a small map of the TouchPad with the active tap zones shaded in red. Next to each zone is a text box specifying the action for that zone.

To Customize:

1. To activate the corner tap zones, check the box next to the text Enable Tap Zones. An unchecked box means that all taps on every part of the TouchPad surface will have left-click behavior.
2. To change an action for a particular zone, locate the text box nearest the zone. The text box displays the current action for this zone (for example, it might say No Zone which means that this particular zone is disabled and any taps here will produce the default left-click action). Click on the down arrow button located to the right of the text to display a list of actions. Select the desired action.
3. Each tap zone can be resized to be as large or as small as you desire by dragging one of the black resize handles located on the TouchPad map.

More Features Properties Page

The More Features properties page allows you to control the following features of your Synaptics TouchPad:

Stop Pointer at Window Borders

This feature constrains the pointer to stay inside the active window. When you try to move the pointer outside the window, it stops at the edge. If you try a second time, the pointer is free to leave the window.

Stopping the pointer at the window borders makes it easy to access controls that lie around the edges of windows. For example, to close or resize a window, you can casually toss the pointer in the general direction of the close box or the edge of the window, and the pointer will stop exactly where you want it.

Snap to Default Button

This feature automatically moves the pointer to the Default Button when a dialog box appears on your screen.

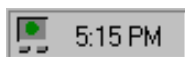
Slow Motion Key

Sometimes you might need more accuracy when pointing with the TouchPad, such as in a drawing program. The speed of the pointer can make this type of accuracy difficult to obtain. To slow down the pointer movement, you can specify a slow motion key. Then, for slow pointer movement, press and hold this key as you move the pointer.

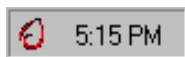
Constrained Pointer Key

At times you may want to restrict the pointer to move only horizontally or only vertically. You can specify a constrained pointer key, then press and hold this key as you move the pointer. The initial pointer direction when holding this key determines whether the pointer is constrained to move only horizontally or only vertically.

Synaptics TouchPad Tray Icon



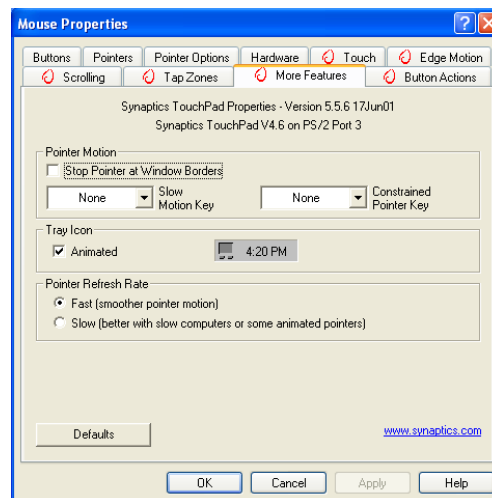
The Synaptics TouchPad tray icon appears in the Windows Taskbar near the clock. You can choose between two icons:



This is the animated Touch Meter icon. The size of the dot on the touch meter indicates the amount of finger pressure. The icon turns blue while Virtual Scrolling is in progress.

This is the non-animated Synaptics logo icon.

You can access the “TouchPad Properties” dialog by double clicking on either tray icon.



Button Actions Properties Page

The Button Actions properties page allows you to customize the physical buttons of your TouchPad.

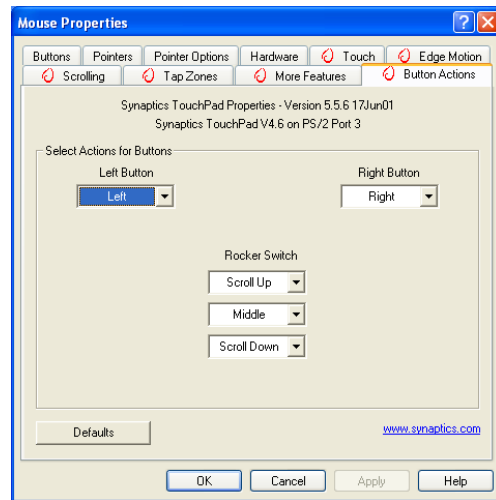
The **Rocker Switch** settings are available on Notebook PC's with scroll buttons between the left and right buttons.

Customizing Button Assignments

You can customize the TouchPad buttons in the same way that you customize the tap zones.

To Customize:

Each button has a text box that displays the current action (for example, it might say Left, which means the left-click or primary-click action). To display a list of possible actions, click on the down arrow button located to the right of the text. Select the desired action.



Touch Properties Page

The Touch properties page allows you to customize the tap response and sensitivity of your TouchPad.

Taps

Check the appropriate boxes in the Taps section of the Touch Properties Page for the tapping capabilities that you prefer:

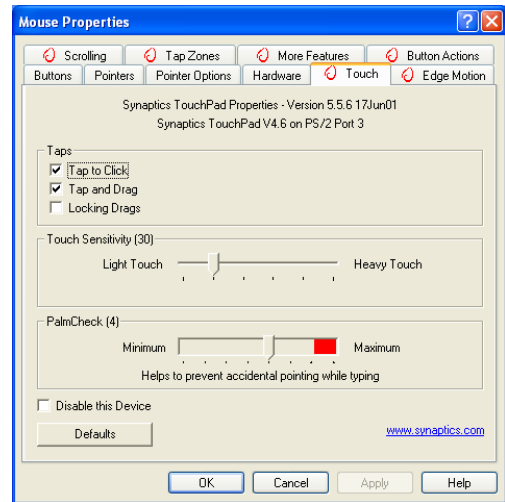
- Tap to Click
- Tap and Drag
- Locking Drags

Touch Sensitivity

Use the Touch Sensitivity slider to control how much finger pressure you must apply before the TouchPad responds. See Adjust the Overall Touch Sensitivity.

Palm Check

The Palm Check slider controls the TouchPad's detection of accidental and unwanted pointing movement. In addition to detecting palm contact with the TouchPad, the TouchPad can ignore much of the accidental and unwanted pointer movement that may occur while typing (due to accidentally contacting your TouchPad). See Prevent Accidental Pointing While Typing for more details.



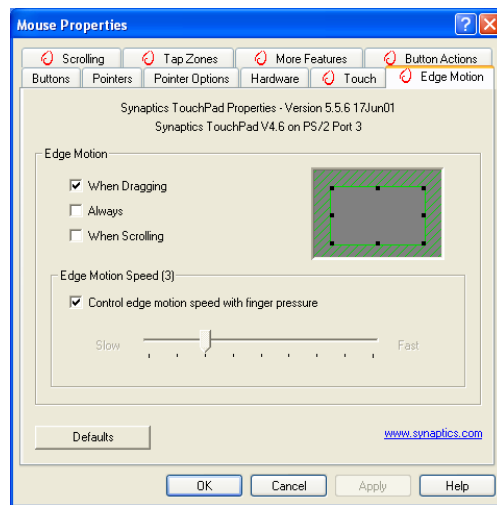
Edge Motion Properties Page

The Edge Motion properties page allows you to customize the long distance pointer motion capabilities of your TouchPad. When your finger reaches the edge of your TouchPad, the Edge Motion feature allows the pointer to continue to move until you lift your finger. See [Move the Pointer Long Distances](#) for more details about the Edge Motion feature.

Enabling Edge Motion

Check the appropriate boxes on this page for the types of Edge Motion that you desire:

- When Dragging
- Always
- When Scrolling



Customizing Edge Zone Sizes

This page includes a small map of the TouchPad with the edge zones shaded in red. See the [Edge Zone TouchPad Map](#) for a more detailed description. You can adjust the size of each zone by dragging one of the black resize handles on the TouchPad map. If you are having trouble activating the Edge Motion feature, you might want to try making the edge zones wider.

Customizing Edge Motion Speed

During Edge Motion, the speed at which the pointer (or dragged object or Virtual Scrolling scroll thumb) moves can be pressure-sensitive or constant. With pressure-sensitive speed, the harder you press the faster the object or pointer moves. For this type of speed, check the box labeled [Control edge motion speed with finger pressure](#).

If you prefer a constant speed for Edge Motion, you can adjust the speed with the [Edge Motion speed slider](#) located on this page.

Frequently Asked Questions

Q: When I use Virtual Scrolling, the pointer jumps over to the scroll bar, and then jumps back where it came from when I'm done. Is this normal?

A: Yes.

Q: Why doesn't the Virtual Scrolling feature work in some windows, even though they have a scroll bar?

A: In order to scroll, Virtual Scrolling must be able to "see" the window's scroll bar. If the scroll bar is partially obscured by another window, or partially off the screen, then Virtual Scrolling will not activate in that window. In general, a window's scroll bar must be entirely on the screen, and fully visible, in order to use Virtual Scrolling in that window. There is an exception to this rule: Virtual Scrolling has "special knowledge" about many common types of windows, and can scroll them even if their scroll bars are not visible on the screen. A very small number of applications use nonstandard scroll bars that might not work reliably with Virtual Scrolling.

Q: Why do some windows scroll smoothly, while others re-display their contents only occasionally as I scroll?

A: The way a window responds to its scroll bars is entirely up to the application which owns that window. Some applications "smooth-scroll," while others wait until you release the scroll bar before updating their contents. Virtual Scrolling "knows" about many common applications and window types, and uses this knowledge to "trick" many windows into smooth-scrolling (Microsoft® Word™ document windows, for example, do not normally smooth-scroll, but they do when you use Virtual Scrolling). If Virtual Scrolling does not "know" about a particular type of window, it still approximates smooth-scrolling by causing the window to re-display when your finger slows down or stops. This can help you more accurately scroll to the right place in a document.

Q: Why does the scroll thumb sometimes "jump around" when I scroll, and not go exactly where the pointer is?

A: Again, the application actually has complete control over the way the scroll thumb moves. Depending upon the window contents, some applications will actually prevent you from moving the scroll thumb to certain locations. Sometimes, the scroll thumb is only "allowed" to come to rest at one or two positions along the scroll bar! In these cases, even if you were to manually drag the scroll thumb with the pointer, you would find that it would "jump" to a final location when you released it. Virtual Scrolling, unfortunately, cannot control how applications manage their scroll bars.

Frequently Asked Questions (Cont')

Q: Why doesn't Virtual Scrolling work properly with Microsoft Internet Explorer?

A: Make sure you are using Internet Explorer version 4.01 or later, and that the Use Smooth Scrolling option on the Advanced page of the Internet Explorer Properties dialog is NOT checked.

Q: When I press and hold the shift key or the control key (CTRL), the pointer movement is either very slow or restricted to move only horizontally or only vertically. What is happening?

A: The shift keys and the control keys are special and are used for various things, such as selecting multiple files in Microsoft Windows Explorer or for zooming in and out on a spread sheet in Microsoft Excel. These keys can also be used for special pointer movement, such as for slowing the pointer down or for constraining the pointer to move only horizontally or only vertically. For example, you can assign the left shift key to be the Slow Motion Key. Then when you press and hold the left shift key, the pointer motion will be slower than usual. Note that you can still use this shift key for other special behaviors! You can still press and hold the left shift key to select multiple files in Microsoft Windows Explorer, but the pointer motion will also be a bit slower. If you see slow or constrained pointer movement when pressing shift or CTRL and you want to turn off this special behavior, go to the More Features Properties Page in the Mouse Properties dialog and uncheck the appropriate boxes.

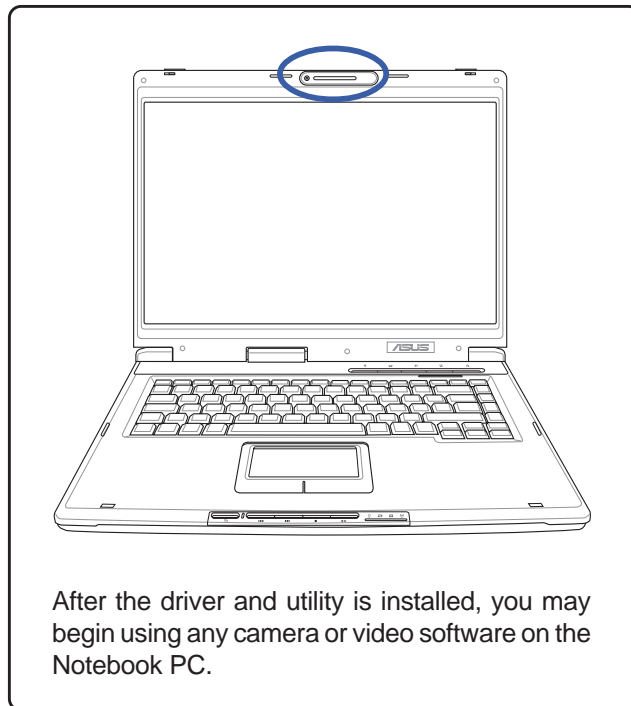


Video Security

(Recommended Utility)

Topics Covered:

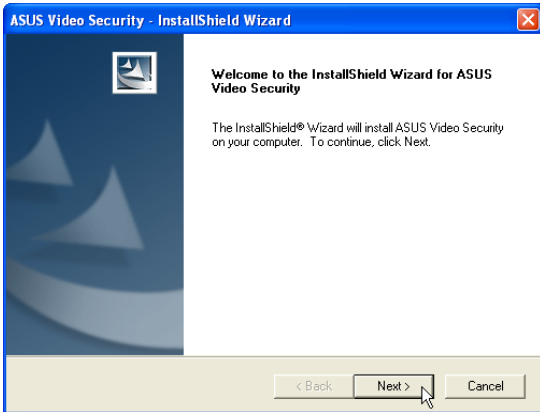
Video Security Setup



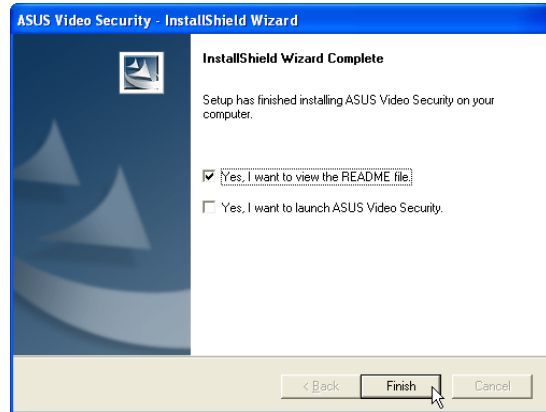
(Screens and drivers may vary depending on your model and operating system.)

Video Security Setup

Running setup will give you the following wizard:



1. On the “Welcome” screen, click **Next** after confirming this is what you want to setup.



2. On the “Setup Complete” screen, click **Finish**.



WINFLASH

WinFlash

(Recommended Utility)

Topics Covered:

WinFlash Setup

Using WinFlash

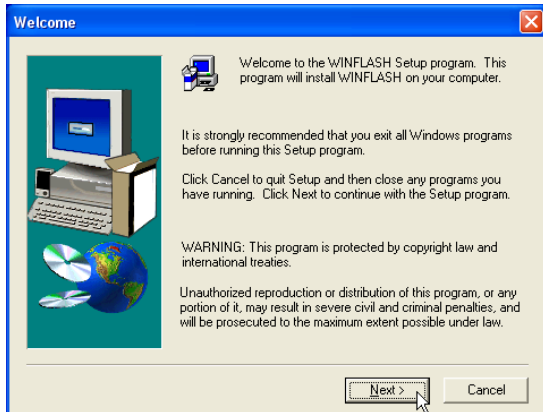
(Screens and drivers may vary depending on your model and operating system.)

WINFLASH Setup

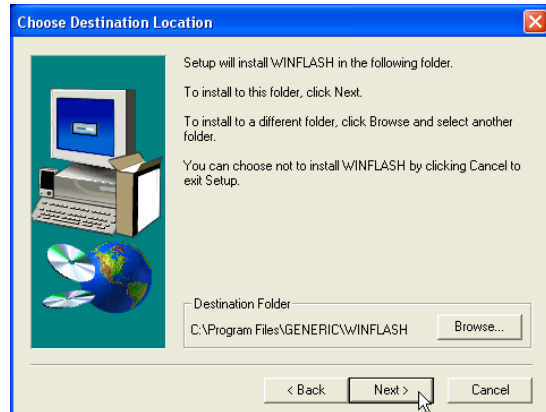
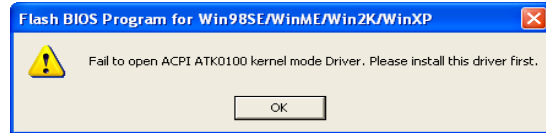


Make sure you install ATKACPI first or else you will get this message.

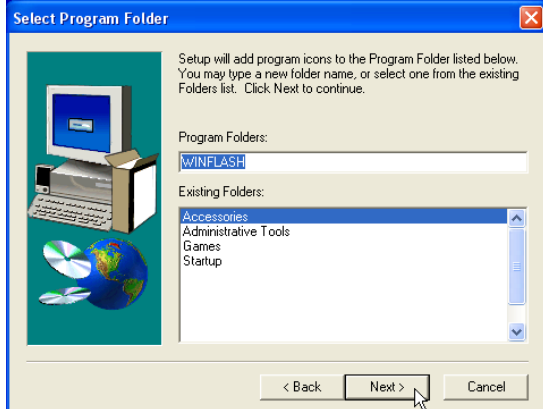
Running setup will give you the following wizard:



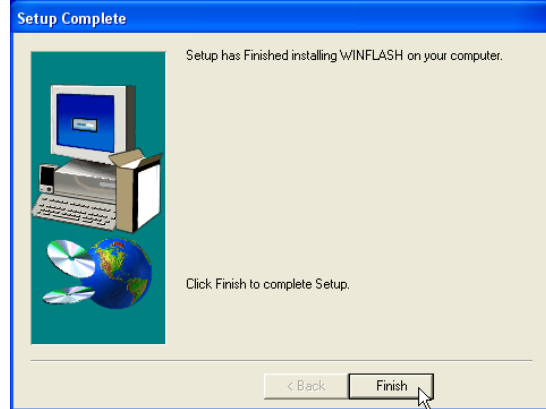
1. On the “Welcome” screen, click **Next** after confirming this is what you want to setup.



2. On the “Choose Destination Location” screen, click **Next** to continue or you may first change the destination folder.



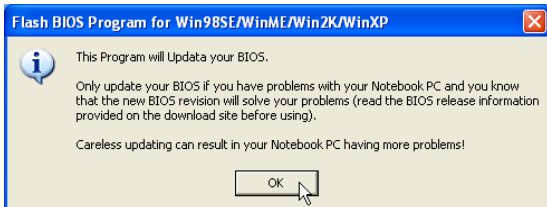
3. On the “Select Program Folder” screen, click **Next** to continue or enter a different folder name.



4. On the “Setup Complete” screen, click **Finish**.

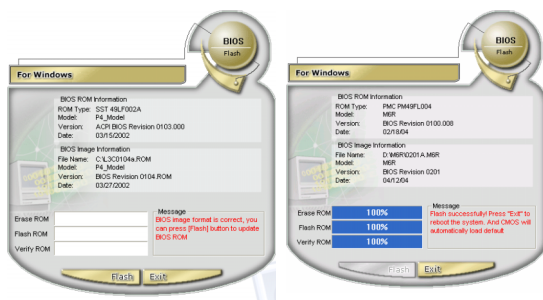
Using WINFLASH

WINFLASH is a simple utility to update your Notebook PC's BIOS. To run **WINFLASH**, access the **All Programs** shortcut through the **Start** button.



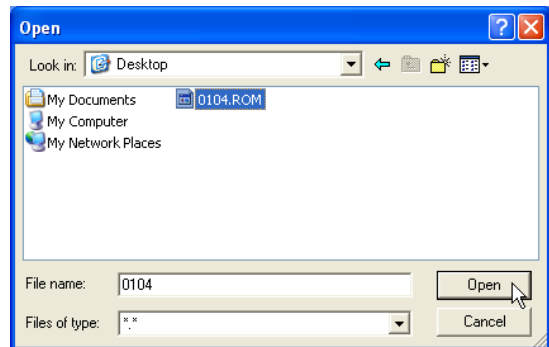
Do not update your BIOS for no reason.

You will be warned that you should only update your BIOS if you know it will solve a specific problem. If you update your BIOS using the wrong BIOS file, your Notebook PC may not boot up.

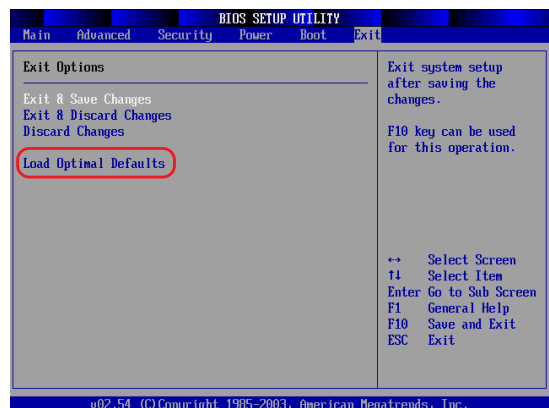


Text in these screens are examples only and will not reflect your system.

Compare the BIOS ROM (your current BIOS) to the BIOS image (the new BIOS). If this is correct, click **Flash** to write the new BIOS to your Notebook PC. You need to restart your Notebook PC and "reset your BIOS". See instructions on the next page.



When you enter WINFLASH, you will be immediately asked for the BIOS image file. Browse to the file and click **Open**.



You may be instructed to "reset your BIOS". It entails pressing [**F2**] on bootup to enter BIOS setup and selecting **Load Setup Defaults**, and then **Exit Saving Changes** on the "Exit" menu.

