

Notebook PC

Software Reference

Product Name:	Notebook PC Support CD
Manual Revision:	1.00 E1131
Release Date:	September 2002

Limitation of Liability

Circumstances may arise where a defect on ASUS' part or other liability, you are entitled to recover damages from ASUS. These instances may include damage to or loss of: life, real property, tangible personal property; or any other actual and direct damages resulted from the omission or failure of performing legal duties under this Warranty Statement. In each such instance, regardless of the basis on which you are entitled to claim damages from ASUS, ASUS is liable for no more than the listed contract price of each product.

ASUS will only be responsible for or indemnify you for loss, damages or claims based in contract, tort or infringement under this Warranty Statement.

This limit also applies to ASUS' suppliers and its reseller. It is the maximum for which ASUS, its suppliers, and your reseller are collectively responsible.

UNDER NO CIRCUMSTANCES IS ASUS LIABLE FOR ANY OF THE FOLLOWING: 1) THIRD-PARTY CLAIMS AGAINST YOU FOR DAMAGES; 2) LOSS OF, OR DAMAGE TO, YOUR RECORDS OR DATA; OR 3) SPECIAL, INCIDENTAL, OR INDIRECT DAMAGES OR FOR ANY ECONOMIC CONSEQUENTIAL DAMAGES (INCLUDING LOST PROFITS OR SAVINGS), EVEN IF ASUS, ITS SUPPLIERS OR YOUR RESELLER IS INFORMED OF THEIR POSSIBILITY.

Table of Contents

Support CD for Windows	6
Drivers for Windows	6
ATI Mobility Radeon VGA Driver	8
Display Settings for Windows XP	10
Display Properties	10
SiS Utility Manager	10
Display Properties Settings	10
Video Setting	11
Driver Mode Setting	11
Information Page	11
SiS Utility Tray	12
Alps TouchPad	13
Section Overview	14
Mouse Properties	14
Buttons	14
Functions assigned to buttons	15
Double Click Speed	15
Use Wheel Function	15
Settings for Scroll	15
Orientation	16
Orientation Settings	16
Tapping	17
Tapping	17
Tapping Speed	17
Drag Lock Settings	18
Typing	18
Gestures Properties Page	19
Corner Tap Functions	19
Others	20
Easy Launcher	21

PC-cillin 2002	23
Welcome to PC-cillin 2002	24
Here's what PC-cillin will do "straight out of the box":	24
Here's what you can do with just a click of a button:	24
Personal Firewall	25
PC-cillin for Wireless	25
Trojan System Cleaner	25
ScriptTrap Technology	26
Emergency Lock	26
User Interface	26
About Intelligent Update	27
New product registration method	27
About viruses	27
How viruses are created	28
Accessing the Trend Micro Virus Encyclopedia	28
Viewing the Trend Micro Virus list	28
Contacting Technical Support	28
Trend Micro Technical Support	29
Before Contacting Technical Support	29
PC-cillin 2002 Screens	30
Configuration Screen	30
Hotkey Utility	31
Hotkey Utility	32
Buttons	32
Hotkey Actions	33
Adding a Program to Run	36
Windows Flash Utility (WINFLASH)	37
Updating Your BIOS	38
Resetting Your BIOS	39

ASUS PC Probe	41
Welcome to ASUS PC Probe	42
Starting ASUS PC Probe	42
Using ASUS PC Probe Monitoring	43
ASUS PC Probe Taskbar Icon	44
Power4 Gear	45
Benefits of Power4 Gear	46
Power4 Gear Interface	46
Power4 Gear Modes	47
Power4 Gear Configuration	48
Check Mail Utility	51
Check Mail Quick Setup	52
Check Mail Startup	52
Using Windows Start Menu	52
Using MS Configuration	52
LAN Settings	52
Joining a Domain or Workgroup (Windows XP)	55
Viewing Your Network	56
BIOS Setup.....	57
BIOS Setup Program	58
Updating your BIOS	59
Main Menu	61
Primary Master (sub-menu)	63
Secondary Master (sub-menus)	65
Display Menu	66
Advanced Menu	67
I/O Device Configuration (sub-menu)	68
Security Menu	70
Power Menu	72
Boot Menu	73
Exit Menu	74

Support CD for Windows

The Notebook PC you purchased may or may not be preloaded with an operating system. The support CD included with this Notebook PC provides all the necessary drivers and utilities in order for you to use your Notebook PC with Microsoft® Windows® XP (referred to as “Windows” in this User’s Manual).

The levels of hardware and software support may vary depending on the installed operating system. Operating systems not pre-installed on this Notebook PC may produce different results than the ones described in the provided user’s manuals.

If your Notebook PC is not preloaded with any operating system, or you want to install another operating system other than the preloaded one, the following pages will give step-by-step installation procedures for typical system configurations under the Windows® operating system. For application usage, please see the online help provided with each of the applications after installation. The following are contents of a typical support CD. Variations may be found for each territory or language. If the autorun menu does not appear, double clicking the CD-ROM disc drive icon in “My Computer” (may be the (D:) drive or (E:) drive on hard drives with two partitions) or running SETUP.EXE (through Start menu “Run...”) located in the root of the support CD, will bring up the autorun menu.

Drivers for Windows

The following are descriptions of each autorun menu item. Due to ongoing improvements in the support CD, there may be some differences between this User’s Manual and your support CD. The names in quotations are the actual driver names displayed in the System Properties of MS Windows. Windows cannot contain all the device drivers from every manufacturer, with every update; therefore the provided support CD will contain the best driver for your built-in devices and should be used in place of any Windows default drivers.

ATKACPI Driver (required) “ATK0100 ACPI UTILITY” Driver

Shown under Windows “**System devices.**” This installs drivers for the Notebook PC’s Advanced Configuration and Power Interface (ACPI) for features utilizing power management functions.

VGA Driver (required) “SiS 650” Driver

Shown under Windows “**Display adapters.**” This installs display drivers for your operating system in order to properly use the Notebook PC’s built-in graphics controller and to provide optimal features. Once the display driver is installed, you can change your display’s resolution and color through Display Properties.

Audio Driver (required) “SiS 7012 Audio” Driver

Shown under Windows “**Sound, video and game controllers.**” This installs audio drivers for your operating system in order to properly use the Notebook PC’s built-in sound controller. All audio functions are configured through Windows and help can be located within Windows documentation or Windows help files.

Wireless LAN Driver (required for internal wireless LAN option)

“Intel PRO/Wireless 2011b LAN 3A Mini PCI Adapter” Driver

Located under Windows “**Network Adapters**.” Installs the required network driver for the Notebook PC’s optional internal wireless LAN controller. If you purchased the optional internal wireless LAN, you need to install this driver. If you did not purchase the optional internal wireless LAN, you cannot install this driver.

LAN Driver (required) “SiS 900 PCI Fast Ethernet Adapter” Driver

Located under Windows “**Network Adapters**.” Installs the required LAN driver for the Notebook PC’s built-in PCI Fast-Ethernet controller. Fast-Ethernet supports both 10 Base-T or 100 Base-TX networks at half or full duplex.

Modem Driver (required-WinME) “HSP56 MR” Driver

Installs the necessary driver in order for your operating system to have the correct files for the Notebook PC with built-in modem and drivers for integration with the internal audio. With third-party software, fax and speaker phone capabilities are possible using this Notebook PC.

TouchPad (recommended) “Alps Pointing-device” Driver

Shown under Windows “**Mice and other pointing devices**.” The Notebook PC already supports built-in or externally connected keyboard and PS/2 mouse devices. However, the provided device driver will provide enhancements and features to the TouchPad to increase the functionality of the TouchPad.

Fast IR Driver (required) “IrDA Fast Infrared Port” Driver

Shown under “**Network adapters**”. Installs driver and configures your Infrared Transceiver A to “**HPHSDL-2300/3600**” so that your Infrared port can work properly.

PC-cillin 2002 (optional) Utility

Installs **Trend’s PC-cillin 2002**, a world-class anti-virus protection software for the new Internet era, to keep your PC virus-free. This very powerful anti-virus software is bundled with each Notebook PC to protect your investment. As software become more and more a part of our daily lives, measures have to be taken to protect them. You may skip this software if you have your own anti-virus software.

ATKACPI Utility (submenu) [Link](#)

Shows you a sub-menu with additional utilities. These utilities require that you first install the **ATKACPI** driver. See next page for descriptions of the utilities.

Read Me Text

Gives you notes concerning this support CD or the Notebook PC.

Browse this CD

Shows you the contents of this support CD using Windows Explorer.

Technical Support Form Text

Opens up a Technical Support Request Form so that you will understand what kind of information is needed if you run into problems and require technical assistance.

Exit

Closes the support CD autorun screen.

ATKACPI Utility (Submenu)

Hotkey Utility (required) Utility

Installs **Hotkey utility**. Hotkey utility is a program designed to intercept key strokes so that key assignments can be made to run a program or script. This program cannot be used to change default keys or key combinations used by other software, operating systems, or by the Notebook PC's hardware.

Windows Flash Utility (recommended) Utility

Installs a BIOS update utility for Windows so that you can conveniently update your Notebook PC's BIOS without having to restart your Notebook PC in DOS mode.

ASUS PC Probe (optional) Utility

Installs **PC Probe** utility to monitor the Notebook PC's CPU temperature and other resources. This is an optional software to help you better manage your Notebook PC's resources.

Check Mail Utility (optional) Utility

Installs Check Mail Utility to monitor and notify you of incoming email messages waiting in your Microsoft® Outlook or Outlook Express Inbox. (This utility may or may not be compatible with other email applications.)

Power4 Gear Utility (optional) Utility

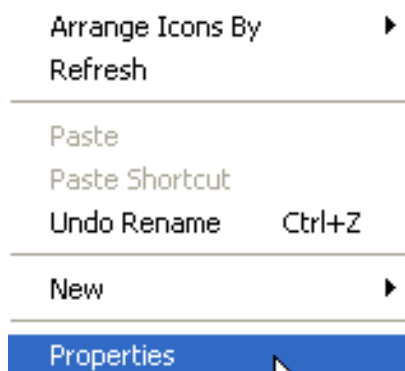
Power4 Gear is a custom utility designed for this Notebook PC that allows you to use predefined or user defined values for multi-selectable power saving modes or "gears". You can "shift" between the "gears" using the taskbar icon or the "Power Gear" key above the keyboard.

ATI Mobility Radeon VGA Driver

Topics Covered:
Display Settings for Windows XP

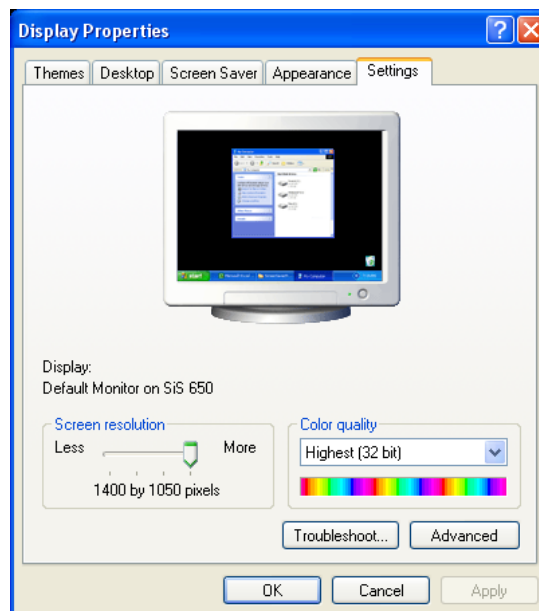
Screens will vary depending on your operating system but the contents should be the same.

Display Settings for Windows XP



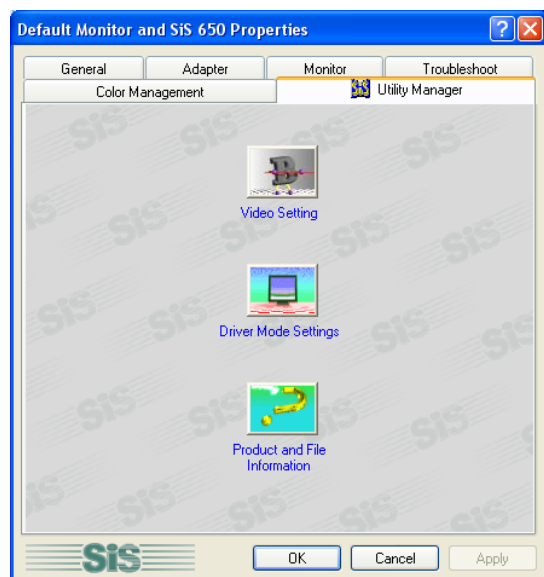
Display Properties

By right clicking your desktop and selecting **Properties**, you can view your display properties.



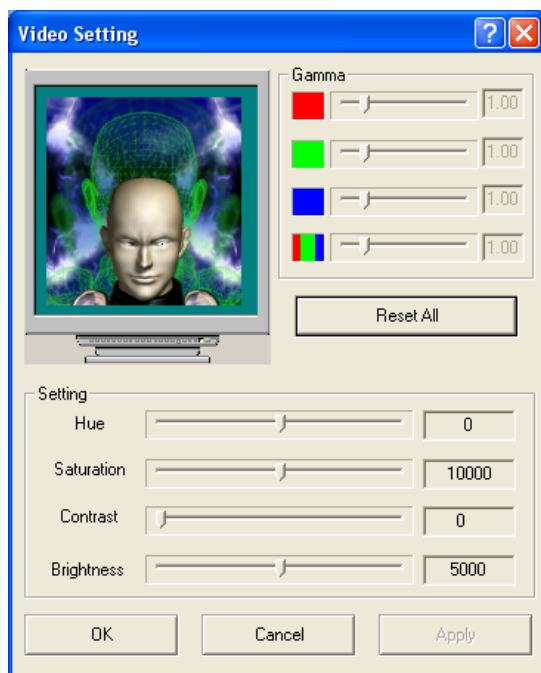
Display Properties Settings

Set screen resolution and color quality to the maximum for best results. If your Notebook PC does not support the maximum resolution, panning will occur to cover the extra area. In this case, you can lower the resolution. For advanced graphics controller settings, click the **Advanced** button.



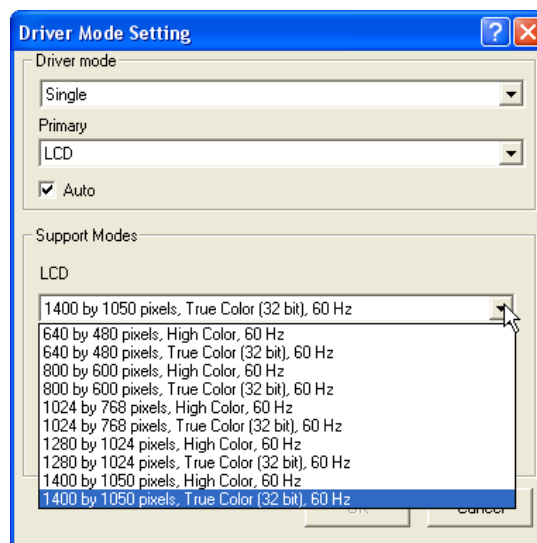
SiS Utility Manager

The SiS Utility Manager can be accessed through the advanced button or through the SiS Utility Tray on the taskbar.



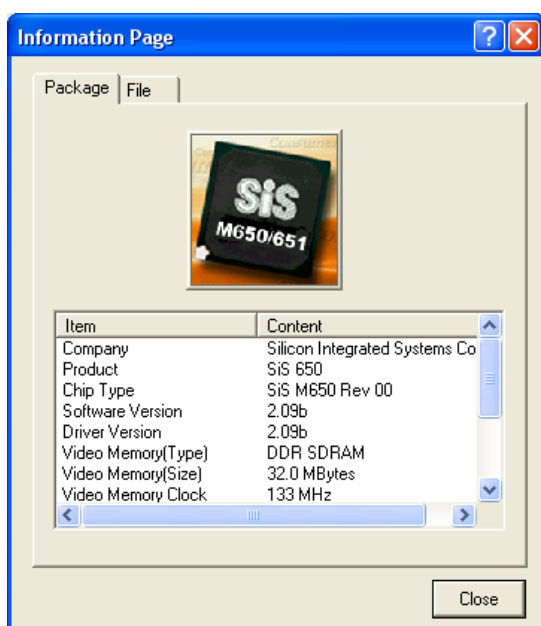
Video Setting

Video Setting allows you to make adjustments to hue, saturation, contrast, brightness. Click Reset All to return the settings to their defaults.



Driver Mode Setting

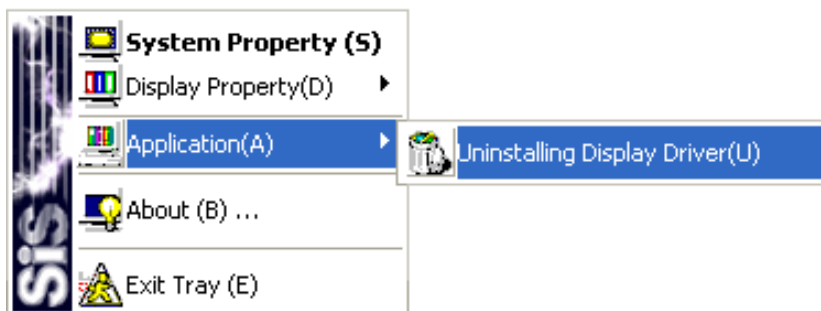
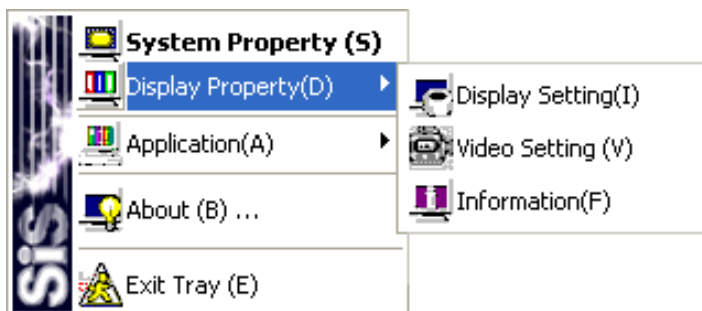
“Driver mode” and “Primary” are set to “Auto” by default. If you would like to set TV or second display resolution manually, uncheck “Auto”.





Information Page

Detailed information about the graphics chipset can be found here.

Display Settings for Windows XP (Cont.)



SiS Utility Tray

Bring up the SiS Utility Tray by right clicking  on the task bar. You can quickly launch display-related property windows using the SiS Utility Tray. If you cannot see this icon, you may have to “Show hidden icons” by clicking on .

Alps TouchPad

Topics Covered:

Section Overview

Changing the Settings

Buttons

Orientation

Tapping

Gestures

Others

Easy Launcher

Screens will vary depending on your operating system but the contents should be the same.

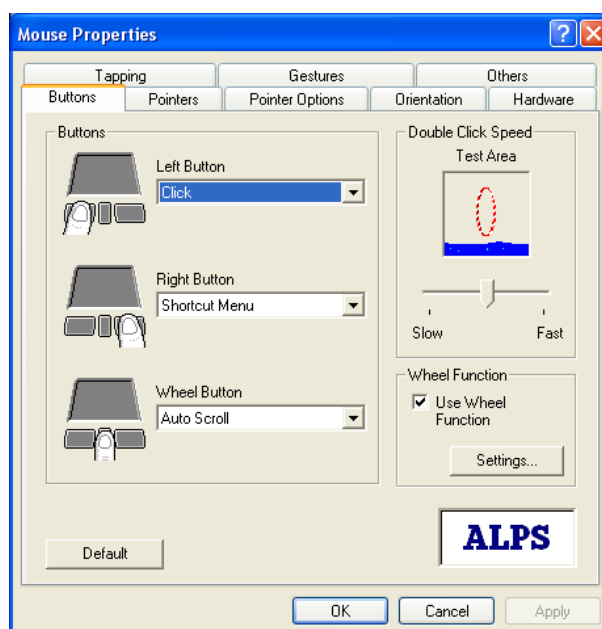
Section Overview

The Alps Mouse Utility is installed from the autorun by clicking “TouchPad”. Alps is a pointing device driver and utility for Windows systems that can be used on the Notebook PC. The Alps Mouse Utility can be used with the built-in Touchpad pointing device as well as any externally connected PS/2 pointing devices.

Mouse Properties

Buttons

Use this feature to adjust the button settings



A preset function can be assigned to each button. The picture of the device varies according to the device which the driver detects. The third picture is for “Both Buttons” on your Notebook PC Touchpad or a two button mouse, the “Central Button” for the middle button on a 3 button mouse, and the “Wheel Button” for a mouse with a wheel.

Functions assigned to buttons

The following are functions that can be assigned to the mouse buttons.

- None
- Click
- Shortcut Menu
- Auto Scroll
- Double Click
- Easy Launcher

Double Click Speed

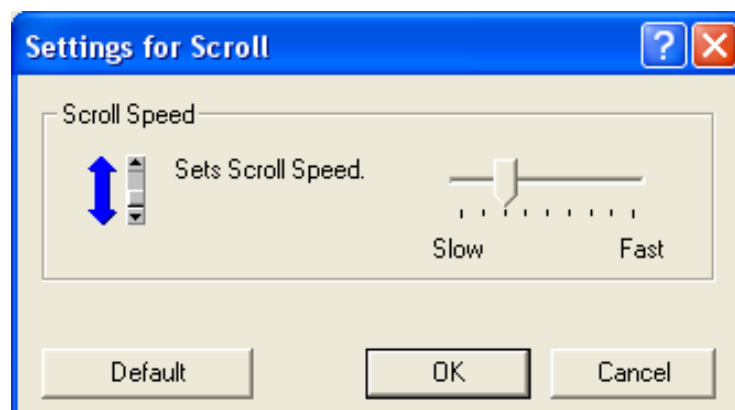
Double Click Speed allows the user to vary the time period between clicks in order for Windows system to register a double click. The user can test their own settings by double clicking in the test window. When a double click is registered, the dolphin jumps through the hoop.

Use Wheel Function

Check this if you want to use the wheel feature.

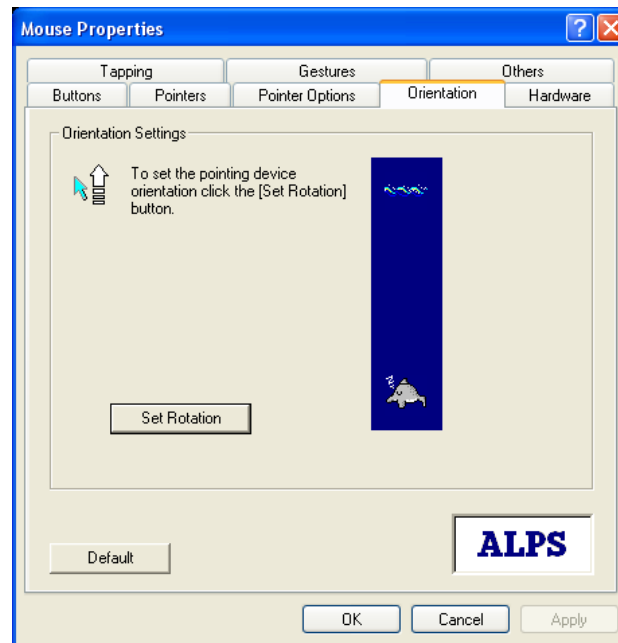
Settings for Scroll

You can change the scrolling speed value by clicking the “Settings” button on the “Buttons” page.



Orientation

Use this feature to adjust the rotation of the mouse pointer.



Orientation Settings

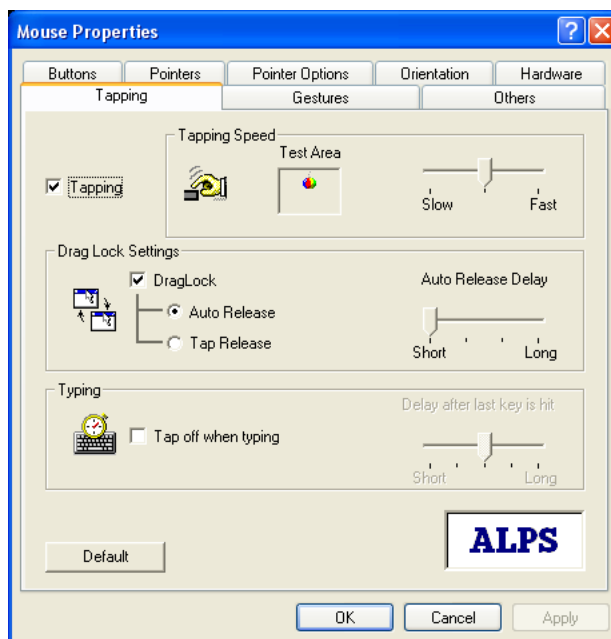
This feature is beneficial when the user finds it more efficient to hold or place the pointing device at an angle. Click the **Set Rotation** button, when the message “Move the dolphin to the surface to set the orientation” appears, move the pointing device in the direction the user wants to represent as the upward movement on the screen. Based on this new upward direction, the on-screen cursor will, from now on, move relative to this new orientation.

In the case where a specific control does not exist (e.g. no default button) The cursor remains in it's current position. The user can however select multiple locations and in this case a priority system is used. For example, if default push button and system menu box are selected and a window which contains no default push button is opened then the cursor jumps to the system menu box if it is present. If not, the cursor remains in it's current location. The dialog bitmap to the right of the check boxes show the location of the current auto Jumps and their associated priorities - one being the highest, three being the lowest.

NOTE: This feature only moves a cursor to specific position; it does not make click event. This feature may not work on some application.

Tapping

Use this feature to adjust the tap settings.



NOTE: Tapping tab appears only when a Touchpad having tapping setup functions is used. When the Tapping property sheet is not displayed, this function cannot be used with your pointing device.

Tapping

When Tapping is enabled, you can simulate a mouse click by simply pressing on the surface of the pointing device. It is set whether to use the Tapping function. When the Tapping function is used, the Tapping check box is turned on. When the Tapping is not used, the Tapping check box is turned off. **NOTE:** If this feature is disabled, Drag Lock Setting, Tapping Speed, and Typing will also be disabled.

Tapping Speed

Moving the Tapping Speed track bar to the left results in a simulated mouse click to slower tapping. Moving it to the right results in a simulated mouse click to faster tapping. By tapping in the test box, you can test the current tapping speed. The animation in the box begins to move when done from the value to which the Tapping is set fast. The animation does not change when it is slower than setting.

Tapping (Cont.)

Drag Lock Settings

Drag Lock

It is a function that keeps the state of dragging even if the finger is separated from the operation side after drags by the Tapping. When the drag lock function is used, the drag lock check box is turned on. **NOTE:** When the drag lock check box is disabled, the Auto Release cannot be set.

Auto Release

The Drag Lock will release the cursor after a specified period of time, which starts when the user raises his or her finger from the surface of the Touchpad. This time period can be defined by the user via the Auto Release Delay track bar, just to the right of the auto release radio button.

Tap Release

When the Tap Release is chosen, the drag lock will be released by clicking a left mouse button mouse or tapping.

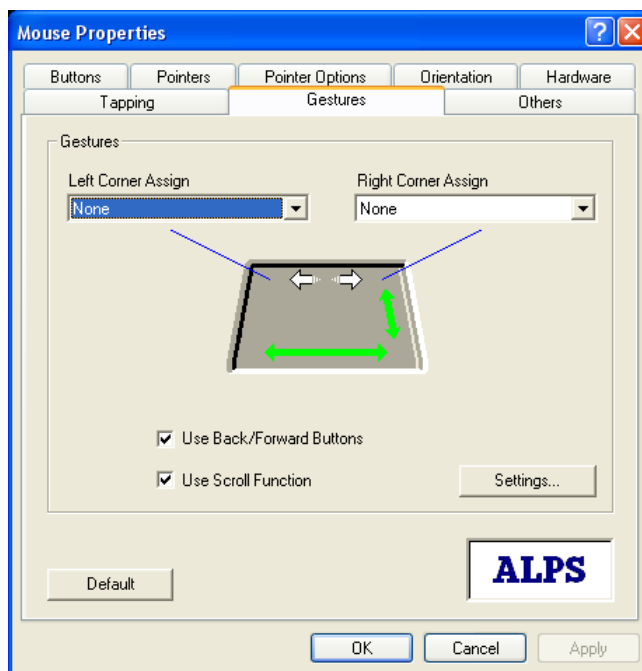
Typing

Tap off when typing

With this option selected, you can not tap while typing on the keyboard. This feature will benefit users in preventing inadvertent tapping while creating a document on a word processor. When typing is interrupted, tapping becomes acceptable. This time period can be defined by the user via the “Delay after last key is hit” track bar.

Gestures Properties Page

Use this feature to adjust the Gesture settings.



Corner Tap Functions

Left Corner Assign/Right Corner Assign

You can assign a function to the corner tap of the Touchpad. Click the Left Corner Assign or Right Corner Assign drop down list and a menu of available options will appear.

Use Scroll Function

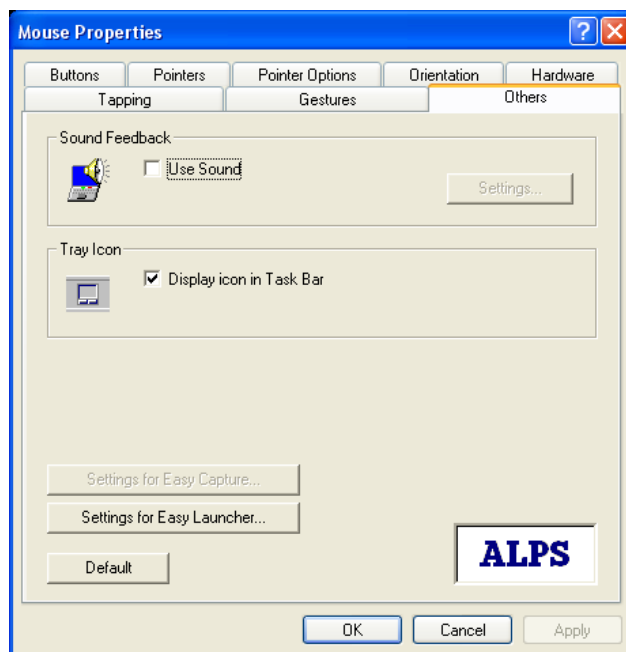
Check this if you want to use the scrolling function. When this feature is enabled, you can scroll by sliding your finger on the edge of Touchpad instead of moving the cursor onto the scroll bar. Also, you can use Zoom and Data Zoom by pressing the “Ctrl” key or “Shift” key while sliding you finger on the Touchpad.

Option

Opens “Options” dialog box. In this dialog, you can change scrolling parameter, tray icon status, and mouse compatibility mode. You can also open this dialog box from the “Gesture” tab.

Others

Use this feature to adjust sound and tray icon settings.

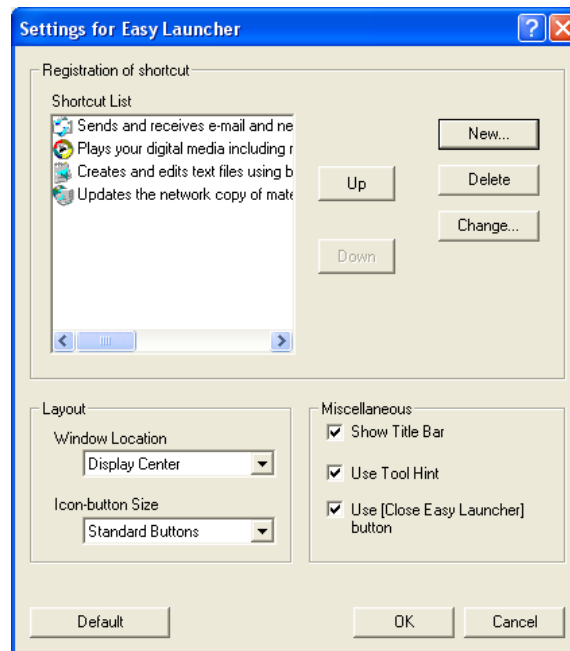


Sound Feedback

Sound Feedback enhances the many features of the mouse by giving the user easily discernible feedback on the operation of the pointing device. Users can assign specific sound files (WAV format) to the various pointing device operations. When audible feedback occurs, users can recognize the execution of the specific pointing device operation. Users can customize the Sound Feedback settings by using Sound property sheet.

Easy Launcher

Easy Launcher is an utility program which allows you to easily operate the Windows system. Users can execute an arbitrary application program by clicking icon buttons which are located in the popup window.



Buttons

New - Use this button to add an icon to the easy launcher.

Delete - Use this button to delete an icon on the easy launcher.

Change - Use this button to edit the parameters of an icon in the easy launcher.

Up / Down - Use these buttons to rearrange the placement of the icons in the easy launcher.

Window Location - Use this to select the location where the easy launcher will show on your desktop.

Icon-button size - Use this to select the size of the icons in the easy launcher.

Show Title Bar - Check to show the “Easy Launcher” name and bar on the Easy Launcher.

Use Tool Hint - Check to show additional information on each icon.

Use (Close Easy Launcher) button - Check to show an icon for closing Easy Launcher.

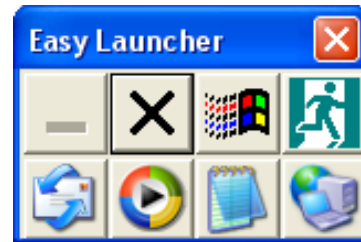
Easy Launcher (Cont.)

To start the Easy Launcher, right-click the touchpad icon on the taskbar and select **Easy Launcher** or set the Easy Launcher to Left or Right Corner Assign, then tap the corner.

The following window will open when the Easy Launcher is started.



(Default)



(With applications added)

Easy Launcher has four default icon buttons which consist of the minimize button, the closed button, the start button and the Close Easy Launcher button.

Minimize button

When users click this button, the currently activated window is minimized.

Close button

When users click this button, the currently activated window is closed.

Start button

When users click this button, the Windows start menu is displayed on the task bar.

Close Easy Launcher button

When users click this button, the Easy Launcher is closed.

NOTE: The Easy Launcher can also be closed by clicking the close window button or pressing the ESC key on the keyboard.

Application button(s)

Application button(s) appear when the short cuts are added in the Easy Launcher. When users click the application button(s), the application associated with that icon can be started. The application is added/deleted from “Others” property sheet.

PC-cillin 2002

Topics Covered:

PC-cillin 2002 Features

What's New in PC-cillin 2002

Test Virus

What is a Computer Virus?

How Viruses Spread

Virus Writers

Screens will vary depending on your operating system but the contents should be the same.

Welcome to PC-cillin 2002

Trend Micro PC-cillin 2002 provides next generation secure computing for today's personal computers. More than just antivirus software, PC-cillin includes a Personal Firewall, Site filter, Internet mail scanning, and more for all your secure computing needs.

Designed for the home or small office user, the friendly interface lets you quickly become familiar with all the powerful features of the software. However, the program behind the interface uses the latest technology and provides you with protection from the nastiest viruses, sneakiest Trojans, and the meanest hackers. With firewall technology, the Trojan System Cleaner tool, and more, PC-cillin gives you peace of mind whenever you connect to the Internet. And now that Trend Micro's award winning ICSA approved scan engine also includes ScriptTrap technology, personal computing has never been more secure.

Here's what PC-cillin will do "straight out of the box":

- Checks for viruses every time you open, copy, move, or save a file
- Protects against downloading infected files from the Internet or FTP sites
- Guards against malicious Java applets and Microsoft ActiveX controls while surfing the Web
- Detects and cleans live Trojans installed on your system
- Monitors your Microsoft Word and Microsoft Excel sessions for macro viruses, using MacroTrap
- Scans and cleans all files on your hard drive
- Scans all program files for viruses
- Checks all your saved documents for macro viruses

Here's what you can do with just a click of a button:

- Scan every file on your system and clean any infected files
- Scan any file from Windows Explorer or My Computer by right-clicking the file icon
- Scan floppy disks and clean any infected files
- Check all of your Word and Excel document(s) for macro viruses
- Scan your email attachments as they are being downloaded from an Internet (POP3) mail server
- Protect your computer against attacks from the Internet using a combination of cloaking and firewall functions
- Make whatever Web sites you want "off limits" to other users of the computer
- Protect your handheld devices with updated Personal Digital Assistant (PDA) virus pattern files

Personal Firewall

PC-cillin 2002 provides secure Internet computing with its new Personal Firewall feature. Easy to operate, the Personal Firewall protects your computer from unwanted Internet connections. The Personal Firewall is ideal for computers using always-on broadband (DSL, cable modem) connections, or for those computers that are often online. Even computers that only connect to the Internet for short periods of time are still vulnerable to hacker attacks and need protection.

With adjustable security levels, a trusted site list, and a port blocking function, the Personal Firewall gives you the control to keep your computer safe from malicious code like spyware and Trojan horses. The Personal Firewall is comprised of the following components:

Cloaking: Prevents your computer from being found. Cloaking hides the entry points (ports) of your computer making it appear to be disconnected from a network. Hackers using techniques like NetBIOS browsing, port scanning, or ICMP packet special processing will be unable to locate your computer.

Firewall: Provides a barrier between your computer and the network (LAN, Internet). This barrier examines and filters network traffic coming into your computer. By filtering network traffic, the firewall prevents malicious programs or files from entering your computer. The firewall protects against attacks hackers commonly use including: Ping of Death, IP conflict, SYN flooding, and others.

Trojan Backdoor Blocking: If a hacker has already broken into your system, he or she could have installed a Trojan (small hidden program) onto your computer (unlike viruses, Trojans do not replicate themselves, but can still wreak havoc on your system). To avoid being traced, the hacker can then use your computer to attack other computers. The Trojan Backdoor Blocking function prevents hackers from using your computer by blocking Back Orifice, Back Orifice 2000, Net Bus, Deep Throat and other known back door programs.

There may be Web sites that you know are safe and will not attack your computer. Using the Trusted Sites function, the Personal Firewall lets you add these safe sites to a list. Your computer can connect to any Web site on this list because they will not be filtered.

PC-cillin for Wireless

Malicious code and other threats hidden inside files, email, or on the Web can enter your Palm, Pocket PC, or EPOC device during beaming, synchronization, or Internet access. Trend Micro PC-cillin for Wireless provides portable, easy-to-use antivirus security for wireless devices; to defend against potential threats. Best of all, PC-cillin for Wireless is bundled with PC-cillin 2002 providing you with secure computing on both your desktop and handheld.

Trojan System Cleaner

PC-cillin automatically runs the Trojan System Cleaner (TSC) during initial installation, and every time Real-time Scan runs. The TSC detects the activity of Trojan horse programs, recovers system files which are modified by Trojans, stop their processes, and deletes files dropped from Trojans.

Traditional antivirus products only scan "files", they open files and check for virus code. But they don't check and clean system files and can't clean or delete Trojan horse programs (also known as Trojans) if it is already run in the system.

The TSC uses patterns to define how to clean a Trojan. These patterns are built into Trend Micro virus pattern files and are kept up-to-date. Whenever TSC is executed, it finds the newest pattern file and tries to read Trojan clean section from the pattern file.

ScriptTrap Technology

With the addition of ScriptTrap technology, PC-cillin now more than ever provides rock-solid protection for your computer. PC-cillin not only guards against harmful known script-based viruses ("I Love You" and "Anna Kournikova"), but can also protect your PC from new, unknown script-based threats.

Using the following processes, ScriptTrap automatically scans for scripting viruses based on "what they do" rather than how they are written:

lexical analysis- divides the script's source code into components, called tokens, based on punctuation and other keys.

semantic parsing- attempts to determine the meaning of each component.

Emergency Lock

PC-cillin also includes an Internet Emergency Lock function that lets you immediately disable all Internet activity if you suspect an attack. Enabling the Emergency Lock function immediately stops all traffic to and from the Internet.

User Interface

Designed for the home or small office user, the program's friendly interface quickly familiarizes you with the powerful features of PC-cillin 2002. The interface now includes a Simple and Standard mode. Using a tab interface, you can easily switch between the two modes.

Simple mode: Perform common PC-cillin tasks such as: view a simplified version of your system status, and scan all drives. In addition, you can update and register your software.

Standard mode: Access more advanced PC-cillin 2002 functions including: viewing your system status in more detail, selectively scanning folders, synchronizing your PDA, quarantining files, and viewing logs. In the Standard mode, as in the Simple mode, you can also update and register your software.

About Intelligent Update

Intelligent Update automatically searches for and downloads the latest files for PC-cillin 2002. This includes pattern and program files for both the main program and PC-cillin for Wireless. In addition, Intelligent Update ensures you have the latest Personal Firewall rules. This powerful function keeps PC-cillin and all its components updated; offering you maximum protection with minimal user intervention.

Once your computer is running, PC-cillin checks for an Internet connection. When this feature is enabled and your computer is online, PC-cillin automatically connects to the Trend Micro server to check if the latest update is available. If newer components are on the server, a pop-up window appears asking if you want to start downloading. If you choose not to download immediately, the pop-up window re-appears in 10 minutes.

New product registration method

PC-cillin 2002 offers a new way to register your software online. On our Registration Web page, simply type your name and email address in the appropriate fields, receive your License Key via email, and insert it into the correct field on the Register Now screen of the PC-cillin window.

Registration only takes a few minutes and Trend Micro provides technical support, virus pattern downloads, and program updates for one year to all registered users, after which you must purchase renewal maintenance.

About viruses

A computer virus is a program that replicates. To do so, it needs to attach itself to other program files (for example, .exe, .com, .dll) and execute whenever the host program executes. Beyond simple replication, a virus almost always seeks to fulfill another purpose: to cause damage.

Called the damage routine, or payload, the destructive portion of a virus can range from overwriting critical information kept on your hard disk's partition table to scrambling the numbers in your spreadsheets to just taunting you with sounds, pictures, or obnoxious effects.

It is worth bearing in mind, however, that even without a "damage routine," viruses allowed to run unabated will continue to propagate--consuming system memory, disk space, slowing network traffic and generally degrading performance. Besides, virus code is often buggy and can also be the source of mysterious system problems that take weeks to understand. So, whether a virus is harmful or not, its presence on your system can lead to instability and should not be tolerated.

Some viruses, in conjunction with "logic bombs," do not make their presence known for months. Instead of causing damage right away, these viruses do nothing but replicate--until the preordained trigger day or event when they unleash their damage routines on the host system or across a network.

To learn more about any particular virus, or about viruses in general, you can access Trend Micro's online Virus Encyclopedia at: www.antivirus.com/.

How viruses are created

Until a few years ago, creating a virus required knowledge of a computer programming language. Today anyone with even a little programming knowledge can create a virus. Usually, though, misguided individuals who want to cause widespread, random damage to computers create viruses.

In the typical scenario, it is an individual, working alone, who writes a virus program and then introduces it onto a single computer, network server, or the Internet. Why? Ego, revenge, sabotage, and basic disgruntlement have all been cited as motivations. Recently, do-it-yourself "virus kits" have been popping up on the Internet, and macro scripts are becoming both easier to learn and more powerful, putting the capacity to engineer viruses in the hands of nearly everyone. In other words, no single, likely profile exists by which virus writers can be described or understood.

So whatever the reason one may have for writing a virus, the important thing is to make certain your company is not victimized, that data you are responsible for is safe, and that precious time is not wasted hunting down (and cleaning up after) viruses.

Accessing the Trend Micro Virus Encyclopedia

PC-cillin includes access to the online Trend Micro virus encyclopedia, organized by name and virus type. Use it to find out about tens of thousands of individual viruses, including the typical symptoms of a given virus, its infection procedure, and the damage routine.

With the growing prevalence of Macro viruses, we have bolstered the number of Macro virus descriptions included in the encyclopedia to well over 2000.

Of course, PC-cillin, which uses Trend's award-winning, 32-bit, multi-threading scan engine, is capable of detecting all viruses that are known to be in circulation, plus the many thousands more that exist as "proof of concept" only in researcher's virus labs and on hacker's computers.

To access the Trend Micro Virus Encyclopedia, on the PC-cillin menu bar, click Security Info > Encyclopedia..

Viewing the Trend Micro Virus list

The Virus Information Center contains a list of the Real-time top ten viruses. In addition, you can view updated Security Alerts and Virus Advisories.

To access the Trend Micro Virus list, on the PC-cillin menu bar click, Security Info > Virus List.

Contacting Technical Support

Trend Micro provides technical support, virus pattern downloads, and program updates for one year to all registered users, after which you must purchase renewal maintenance.

Send an email to our highly trained technical support staff or visit our Web site to receive technical support.

Trend Micro Technical Support

Email: support@trendmicro.com

URL: www.antivirus.com

To speed up your problem resolution, when you contact our staff please provide as much of the following information as you can:

- Product serial number
- PC-cillin program, scan engine, pattern file, version number
- OS name and version
- Internet connection type
- Exact text of any error message given
- Steps to reproduce the problem

Before Contacting Technical Support






While our technical support staff is always pleased to handle your inquiries, there are a couple things you can do to quickly find the answer you are seeking.

- Check the documentation: the manual and online help provide comprehensive information about PC-cillin. Search both documents to see if they contain your solution.
- Visit our technical support Web site: our technical support Web site contains the most up-to-date information about all Trend Micro products. Other inquiries that were already answered are also posted on the support Web site.

PC-cillin 2002 Screens

PC-cillin 2002 Real-time Monitor

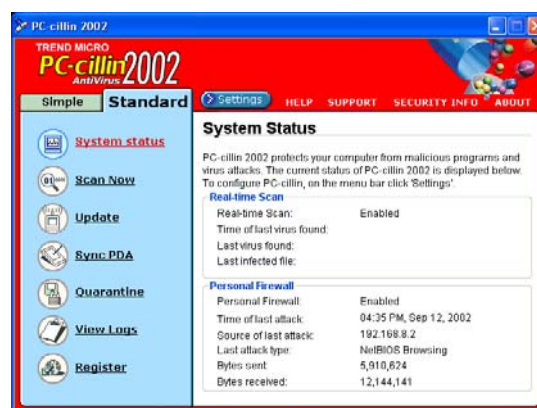
The Real-time Monitor is the quickest way to access certain functions, for example to display the PC-cillin or Settings windows. With the Real-time Monitor, you know at a glance if real-time scanning is enabled (the lightning streak icon is red) or disabled (the lightning streak icon is grey).

-  The Emergency Lock is activated. All incoming and outgoing Internet traffic is halted.
-  PC-cillin is connecting to the Trend Micro server to download the latest updates.
-  Your computer is currently under attack.
-  The real-time scanning function is enabled.
-  The real-time scanning function is disabled.

Configuration Screen

Double click the PC-cillin icon on the taskbar to bring up the real-time scan information page. Or right click and select "Configuration".

The PC-cillin software has many features to protect you from Virus threats. Use the **Help** for more information.

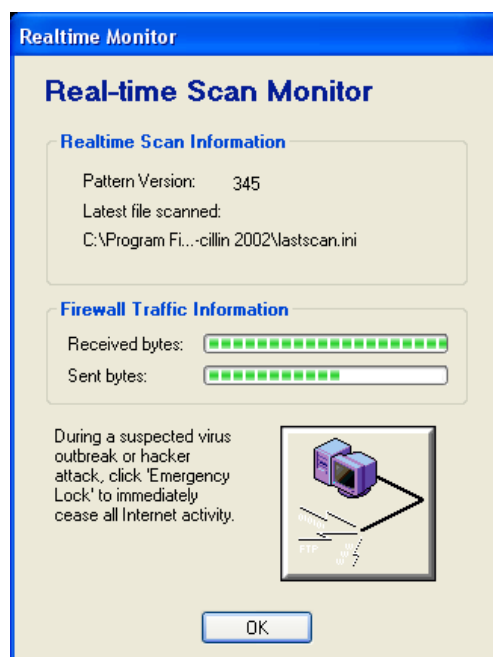


Real-time Status

Select "Real-time Status" by right clicking on the PC-cillin icon and you will bring up information on your virus pattern version, last scanned file, and network activity.

Stop Network Activity

Click the large button with a computer and broken network cable to stop all network activity if you suspect harmful activities are being made to your computer from the network.



Hotkey Utility

Topics Covered:

Hotkey Utility

Buttons

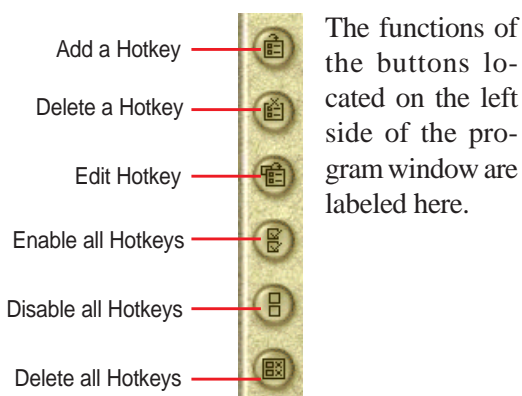
Hotkey Actions

Adding a Program to Run

Screens will vary depending on your operating system but the contents should be the same.

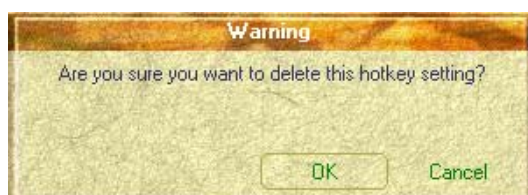
Hotkey Utility

Buttons



Delete a Hotkey

Highlight a Hotkey and click this button to delete it from the current category.



If you did not select a Hotkey, a message will show:



Delete all Hotkeys

Deletes all Hotkeys in the current category. This confirmation will be shown:



Add a Hotkey

You can assign three Hotkeys to the two preset by the utility for a maximum of five. If you don't use the two preset, you can delete them for your own applications.

When you choose to add a hotkey, you can specify a key by pressing that key or key combination in the Hotkey box (the <Fn> key cannot be entered and will be automatically added to the "Notebook Fn Hotkey" category). The available Hotkey actions for assignment are shown in the "Hotkey Action" pull down.



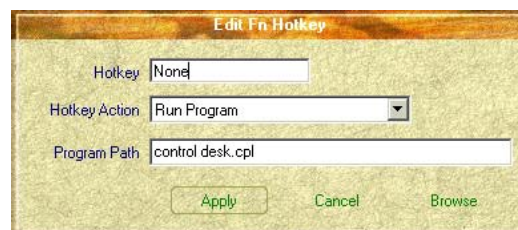
If you already have five hotkey settings, you will get this message.

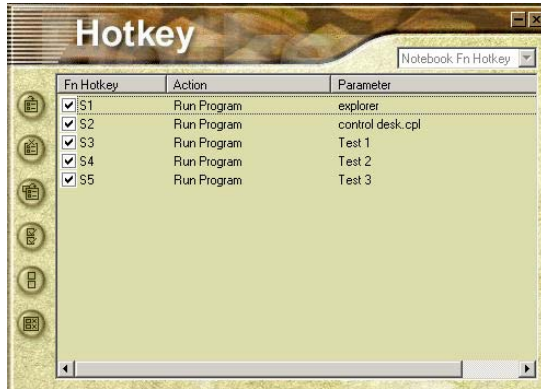


Edit a Hotkey

Highlight a Hotkey and click this button to change its Hotkey or action.

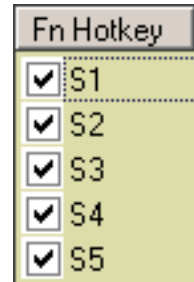
You can enter any information just like adding a Hotkey.





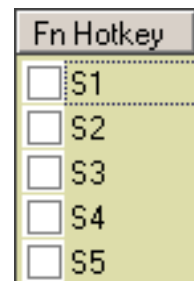
Enable all Hotkeys

Enables all Hotkeys by placing check marks in front of the Hotkeys in the current category.



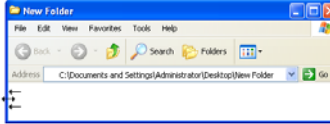
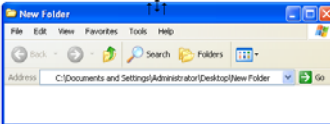
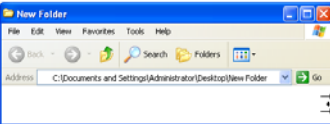
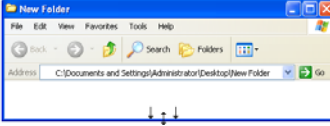
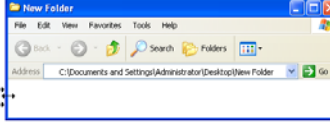
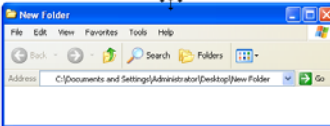
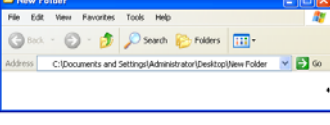

Disable all Hotkeys


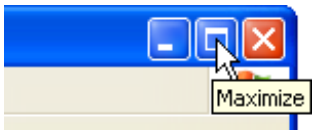
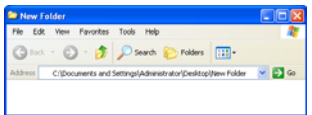




Disables all Hotkeys by removing check marks from the front of the Hotkeys in the current category.



Hotkey Actions

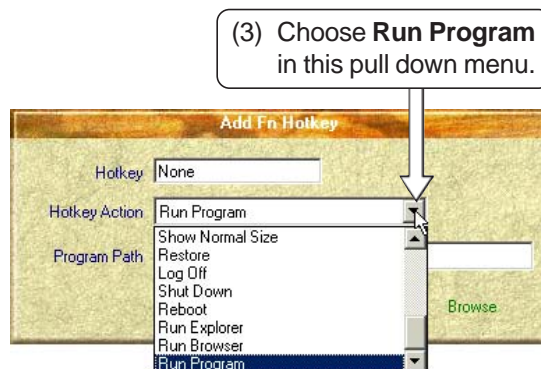
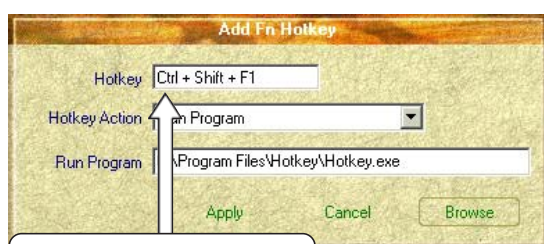
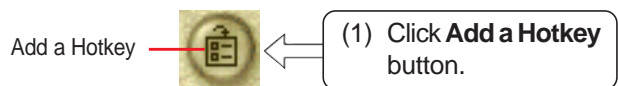
Actions	Descriptions	Examples (of action)
None:	Performs no action	--
Move Window To Left:	Moves the active window left between 1-50 steps	←
Move Window To Up:	Moves the active window up between 1-50 steps	↑
Move Window To Right:	Moves the active window right between 1-50 steps	→

Actions	Descriptions	Examples (of action)
Move Window To Below:	Moves the active window down between 1-50 steps	
Extend Window From Left:	Stretches the active window left between 1-50 steps	
Extend Window From Up:	Stretches the active window up between 1-50 steps	
Extend Window From Right:	Stretches the active window right between 1-50 steps	
Extend Window From Below:	Stretches the active window down between 1-50 steps	
Shrink Window from Left:	Shrinks the active window from the left between 1-50 steps	
Shrink Window from Up:	Shrinks the active window from the top between 1-50 steps	
Shrink Window From Right:	Shrinks the active window from the right between 1-50 steps	
Shrink Window From Below:	Shrinks the active window from the bottom between 1-50 steps	

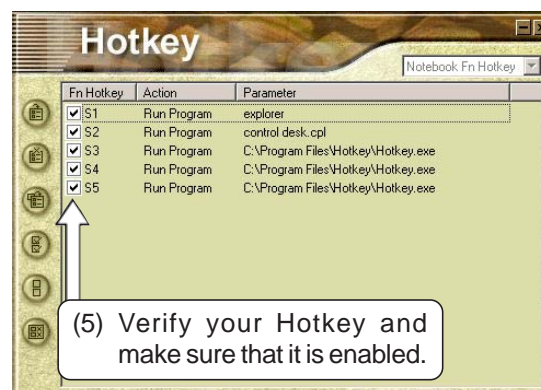
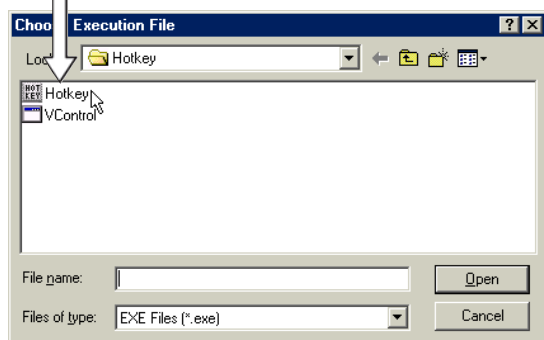
Actions	Descriptions	Examples (of action)
Minimize Window:	Minimizes the active window	
Maximize Window:	Maximizes the active window	
Show Normal Size:	Shows the active window in normal size (user adjustable)	
Restore:	Restores a minimized window to its previous size.	
Log Off:	Logs the current user OFF from the current Windows session and any connected networks.	
Shut Down:	Exits from Windows and turns OFF the Notebook PC.	
Reboot:	Restarts the Notebook PC	
Run Explorer:	Runs Windows Explorer	
Run Browser:	Runs the Internet Browser	
Run Program:	Runs a user defined program	

Adding a Program to Run

To add a Hotkey to run a program follow the steps below.



(4) Choose an executable file using explorer.



Windows Flash Utility (WINFLASH)

Topics Covered:

Updating Your BIOS

Resetting Your BIOS

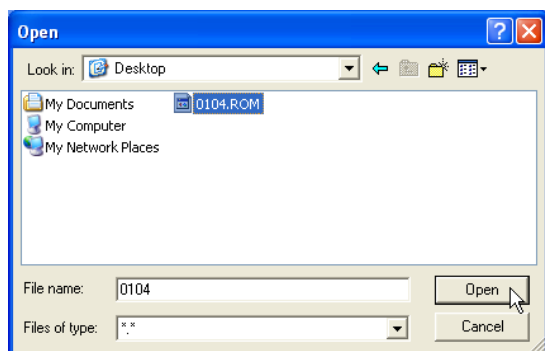
Screens will vary depending on your operating system but the contents should be the same.

Updating Your BIOS

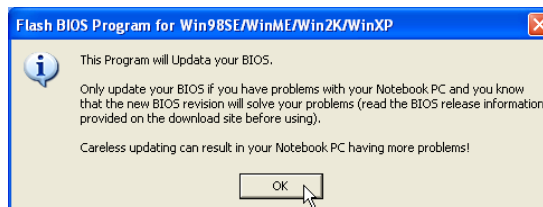
WINFLASH is a simple utility to update your Notebook PC's BIOS.



To run **WINFLASH**, access the **All Programs** shortcut through the **Start** button.



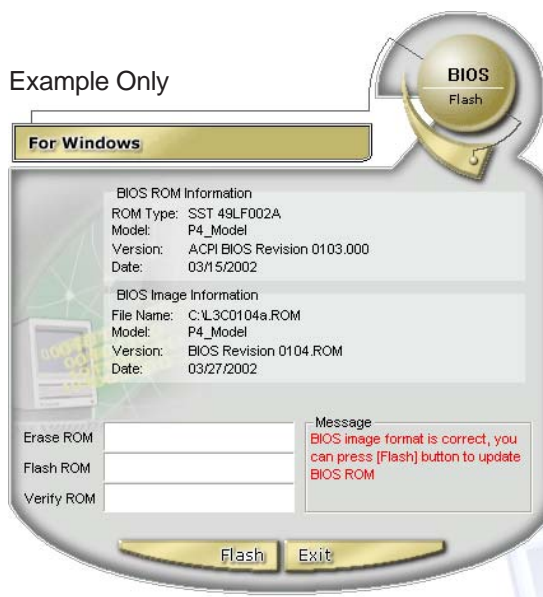
When you enter WINFLASH, you will be immediately asked for the BIOS image file. Browse to the file and click **Open**.



Do not update your BIOS for no reason.

You will be warned that you should only update your BIOS if you know it will solve a specific problem. If you update your BIOS using the wrong BIOS file, your Notebook PC may not boot up.

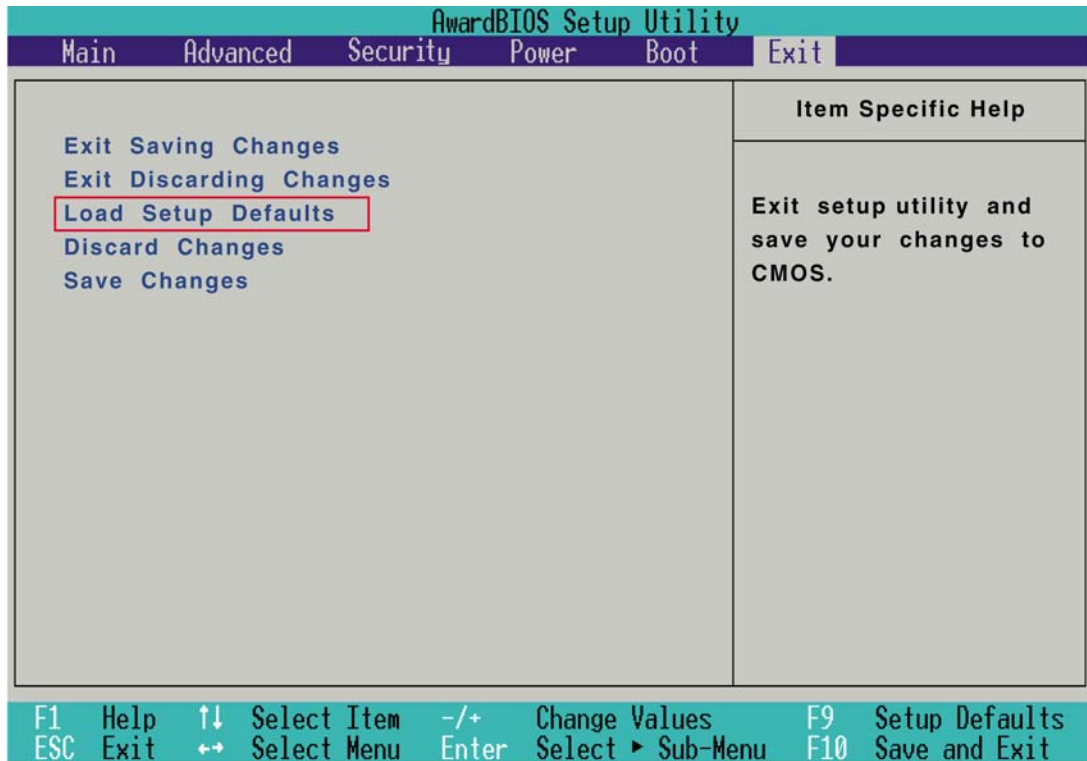
Example Only



Compare the BIOS ROM (your current BIOS) to the BIOS image (the new BIOS). If this is correct, click **Flash** to write the new BIOS to your Notebook PC. You need to restart your Notebook PC and “reset your BIOS”. See instructions on the next page.

Resetting Your BIOS

If you ever hear “reset your BIOS”, it entails pressing [F2] on bootup to enter BIOS setup and selecting **Load Setup Defaults**, and then **Exit Saving Changes** on the “Exit” menu.



ASUS PC Probe

Topics Covered:

Starting ASUS PC Probe

Using PC Probe Monitoring

ASUS PC Probe Task Bar Icon

Screens will vary depending on your operating system but the contents should be the same.

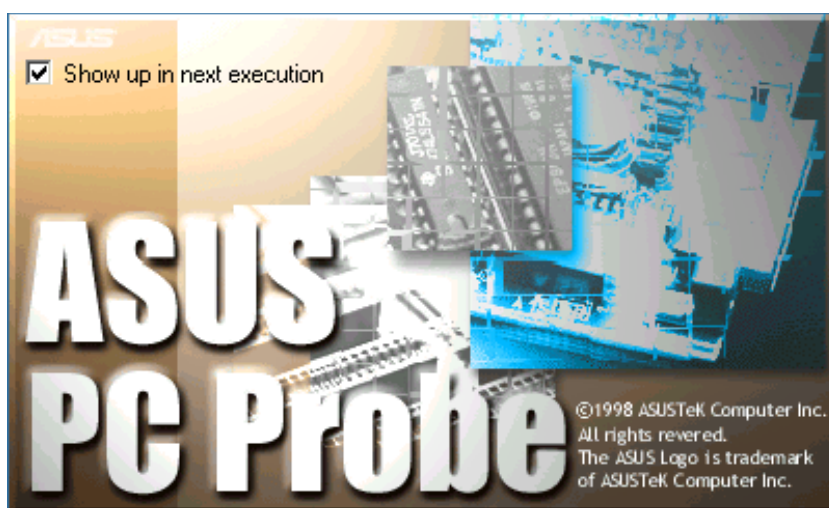
Welcome to ASUS PC Probe


ASUS PC Probe is a convenient utility to continuously monitor your computer system's vital components, such as fan rotations, voltages, and temperatures. It also has a utility that lets you review useful information about your computer, such as hard disk space, memory usage, and CPU type, CPU speed, and internal/external frequencies through the DMI Explorer.

Starting ASUS PC Probe

If the ASUS Probe icon (magnifying glass) is not shown on the taskbar (see below), click the Windows **Start** button, point to **Programs**, and then **ASUS Utility**, and then click **Probe VX.XX**.

When ASUS PC Probe starts, a splash screen appears allowing you to select whether to show the screen again when you open PC Probe or not. To bypass this startup screen, clear the **Show up in next execution** check box.



The PC Probe icon  will appear on the taskbar's system tray indicating that ASUS PC Probe is running. Clicking the icon once will allow open the PC Probe interface.

Windows XP Taskbar

Windows XP will hide taskbar items. Click the arrow to show running services.

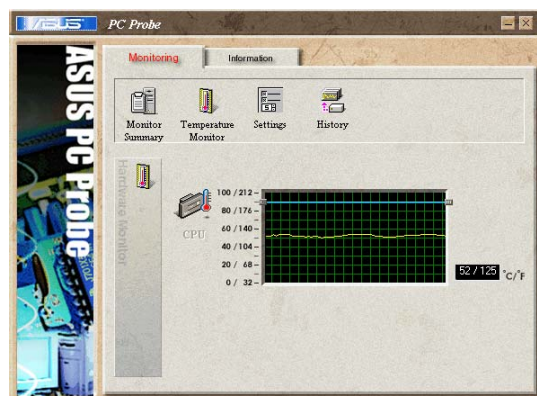


Using ASUS PC Probe Monitoring



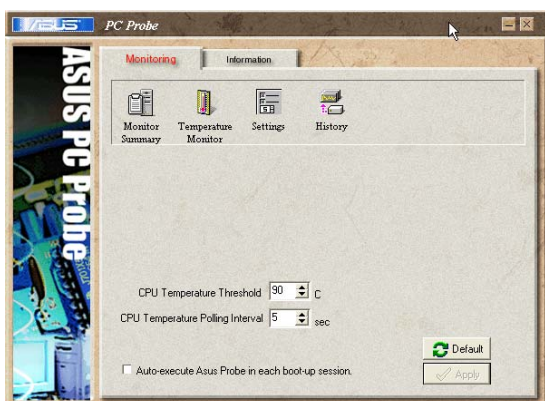
Monitor Summary

Shows a summary of the items being monitored.



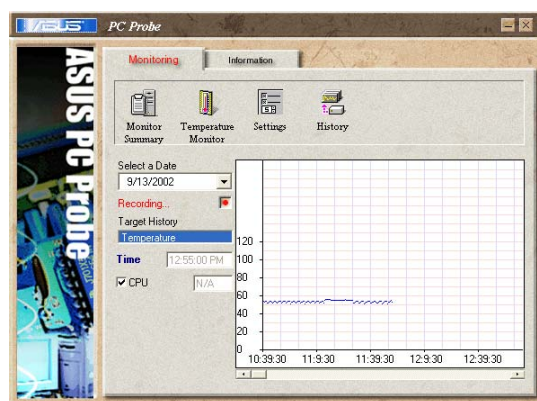
Temperature Monitor

Shows the PC's temperature.



Settings

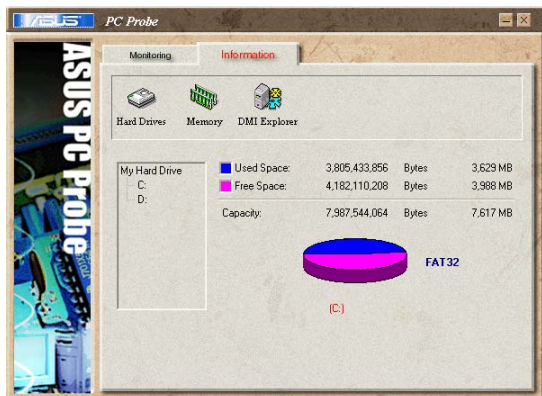
Lets you set threshold levels and polling intervals or refresh times of the PC's temperature, fan rotation, and voltages.



History

Lets you record the temperature monitoring activity by date, time, and target history. Click the record button and select a date. To view a previous recording, simply choose that date.

Information



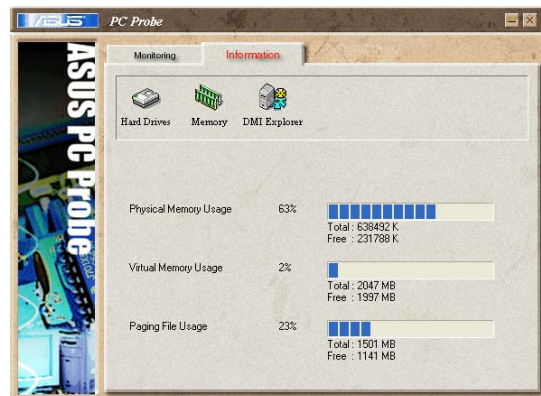
Hard Drives

Shows the used and free space of the PC's hard disk drives and the file allocation table or file system used. Information on other hard drives can be accessed by clicking on the relevant drive letter.



DMI Explorer

Shows information pertinent to the PC, such as CPU type, CPU speed, and internal/external frequencies, and memory size.



Memory

Shows the PC's memory load, memory usage, and paging file usage.

ASUS PC Probe Taskbar Icon

Right clicking the PC Probe icon will bring up a menu to open or exit ASUS PC Probe and pause or resume all system monitoring.



When the ASUS PC Probe senses a problem with your PC, portions of the ASUS PC Probe icon changes to red and audio alerts will be heard from the speaker.



NOTE: PC Probe will constantly use resources to check the system status while Windows is operating. It is suggested to exit PC Probe while using high demanding applications.

Power4 Gear

Topics Covered:

Benefits of Power4 Gear

Power4 Gear Interface

Power4 Gear Configuration

Screens will vary depending on your operating system but the contents should be the same.



Benefits of Power4 Gear

Power4 Gear gives you control over power consumption items by allowing you to instantly “shift” from one power consumption scheme to another. The four preferences or “gears” are shown below. You can change or “shift” gears by using the Power4 Gear button above the keyboard or by using the task bar icon. Power4 Gear can also be automatically activated when AC power is removed.

Power4 Gear Interface

Understanding the Power4 Gear buttons

Press the Power4 Gear button above the taskbar to shift between the four gears as labeled below. The icon may vary depending on your Notebook PC model.



Maximum Performance



If your Notebook PC has overclocking options and is enabled, the airplane will be replaced with a rocket.

High Performance



Medium Performance

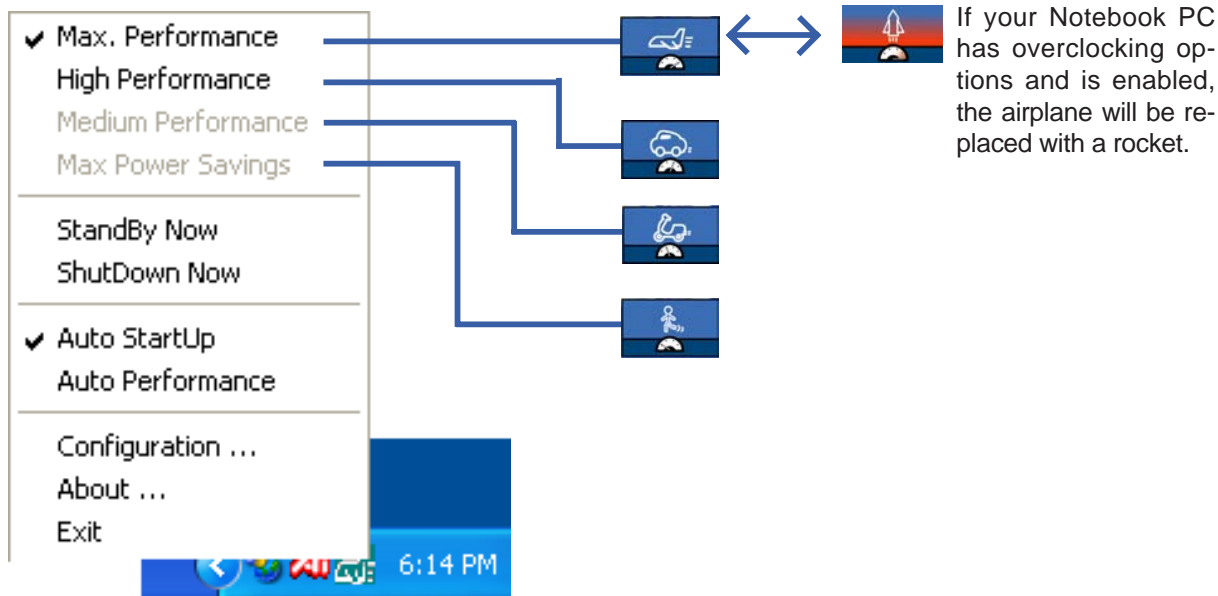


Maximum Power Savings



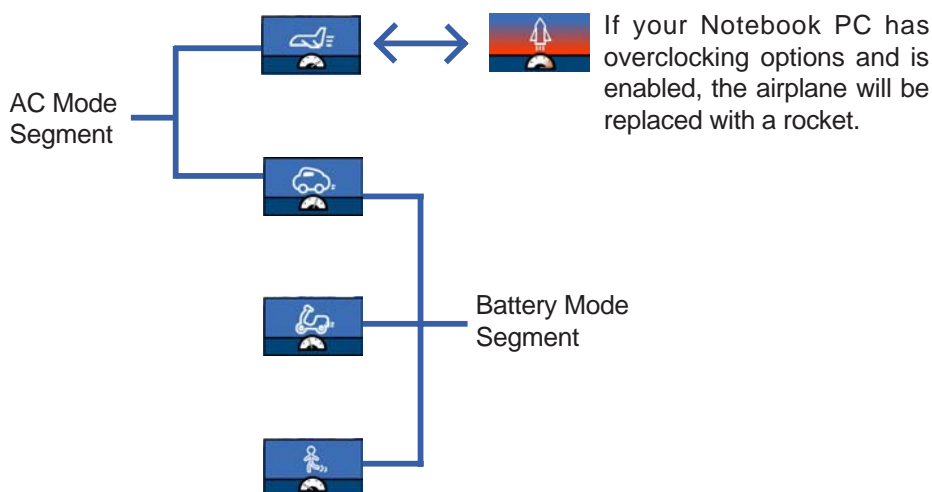
Using the task bar icon

Right-click the icon on the taskbar for quick access to Power4 Gear settings.



Power4 Gear Modes

When you are using an AC adapter, the Power4 Gear button will switch between two modes as shown below. When you remove the AC adapter, the Power4 Gear button will switch between three modes as shown below. When you remove or apply the AC adapter, Power4 Gear will automatically shift you up or down into the proper mode segment.



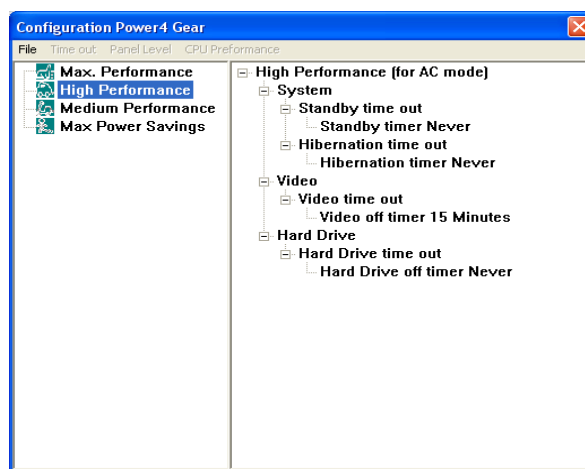
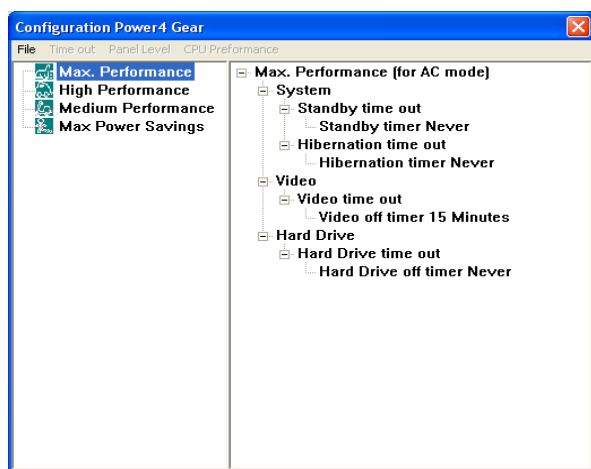
Power4 Gear Configuration

Double click an item to bring up a menu of selections and click on a value to change. To save, select “Save Configuration” from the “File” pull-down menu. If you did not save, you will be prompted to when you exit.

Maximum Performance



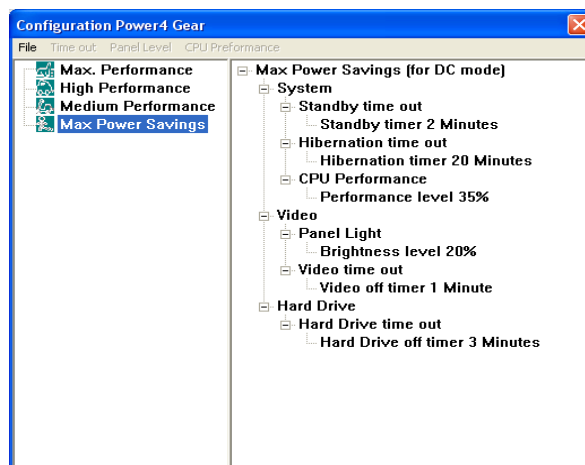
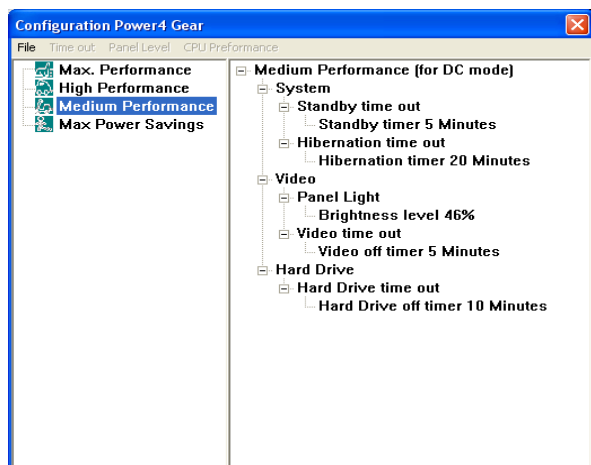
High Performance



Medium Performance



Maximum Power Savings



See next page for available selections for each “gear”.

System Standby Timer

Standby time out

Standby timer Never

1 Minute
2 Minutes
3 Minutes
5 Minutes
10 Minutes
15 Minutes
20 Minutes
25 Minutes
30 Minutes
45 Minutes
1 Hour
2 Hours
3 Hours
4 Hours
5 Hours
Never

Display Panel Off Timer

Video time out

Video time out 15 Minutes

1 Minute
2 Minutes
3 Minutes
5 Minutes
10 Minutes
15 Minutes
20 Minutes
25 Minutes
30 Minutes
45 Minutes
1 Hour
2 Hours
3 Hours
4 Hours
5 Hours

CPU Performance

CPU Performance

Performance level 100%

100%
61%
35%

Hard Drive Off Timer

Hard Drive time out

Hard Drive time out Never

1 Minute
2 Minutes
3 Minutes
5 Minutes
10 Minutes
15 Minutes
20 Minutes
25 Minutes
30 Minutes
45 Minutes
1 Hour
2 Hours

Display Panel Brightness

(in Medium Performance or Maximum Savings)

Video

Panel Light

Brightness level 20%

Video

6%
13%
20%
26%
33%
40%
46%
53%
60%
66%
73%
80%
86%
93%
100%

Check Mail Utility

Topics Covered:

Check Mail Quick Setup

Check Mail Startup

Screens will vary depending on your operating system but the contents should be the same.

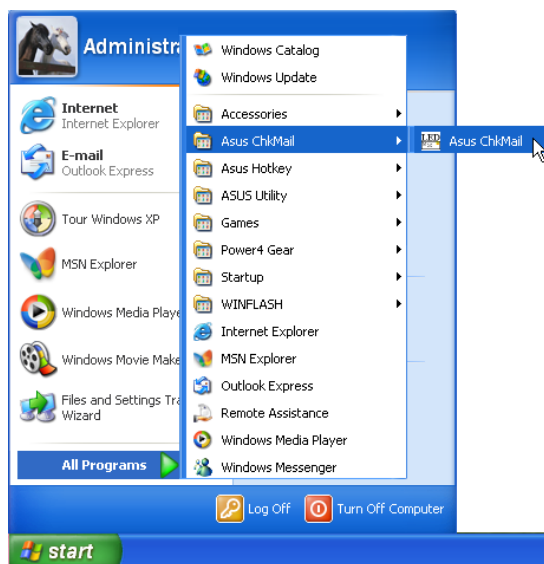
Check Mail Quick Setup

The support CD provided with this Notebook PC allows you to install Check Mail Utility to monitor and notify you of incoming email messages waiting in your Microsoft® Outlook or Outlook Express Inbox. The Check Mail utility was designed for Microsoft Outlook products and may or may not be compatible with other email applications. Launch Microsoft Outlook Express and setup your email account if not done so already. A blue light between the two email (✉) icons will blink when there are unread email in your Inbox. Unread email will be indicated in Outlook by a bold “Inbox (x)” (the x being the number of unread emails).

Check Mail Startup

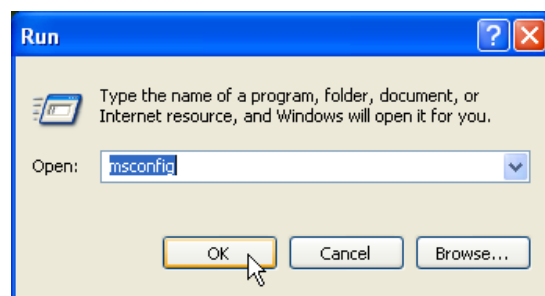
After installation, “Check Mail” loads with Windows and runs in the background.

Using Windows Start Menu

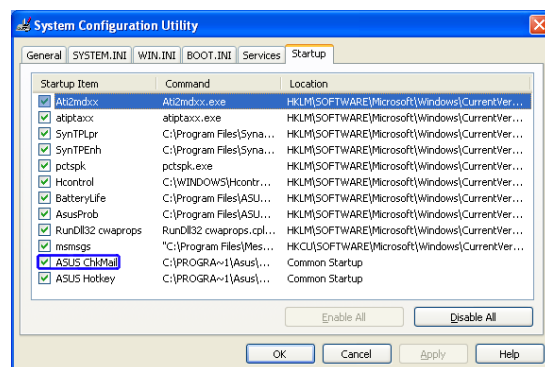


To run **ChkMail**, access the **All Programs** shortcut through the **Start** button.

Using MS Configuration



Run the **msconfig** utility from the **Start** button.



On the Startup page, you will see “Startup” items. **ASUS ChkMail** is set to startup with Windows. You can deselect the items you do not want to startup with Windows.

LAN Settings

Topics Covered:**Joining a Domain or Workgroup**

Screens will vary depending on your operating system but the contents should be the same.

Configuring the Network Device

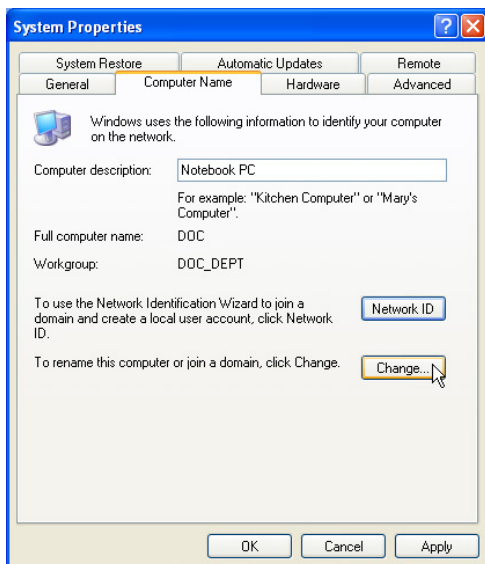
Joining a Domain or Workgroup (Windows XP)



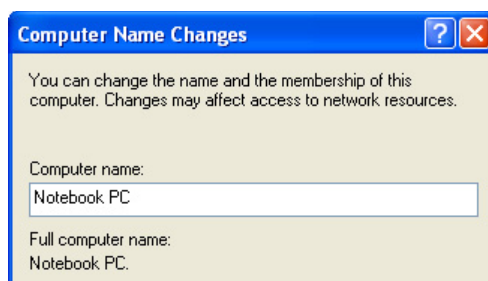
(1) Click **Start** and **My Computer**.



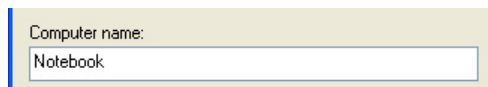
(2) Click **View system information**.

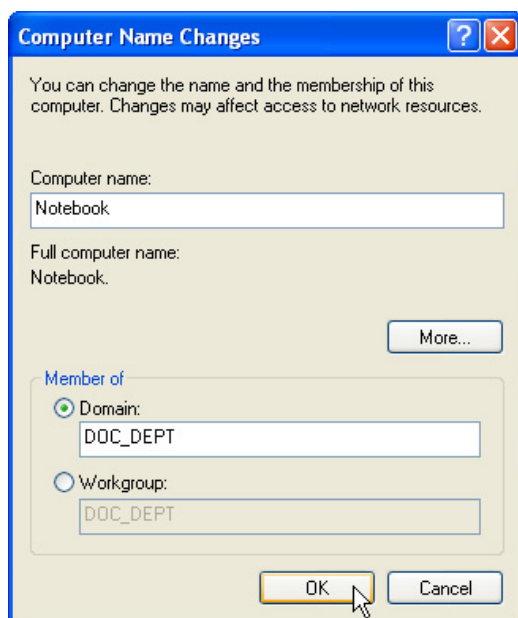


(3) Your computer name, workgroup or domain information is shown here. Click **Change** to view options.



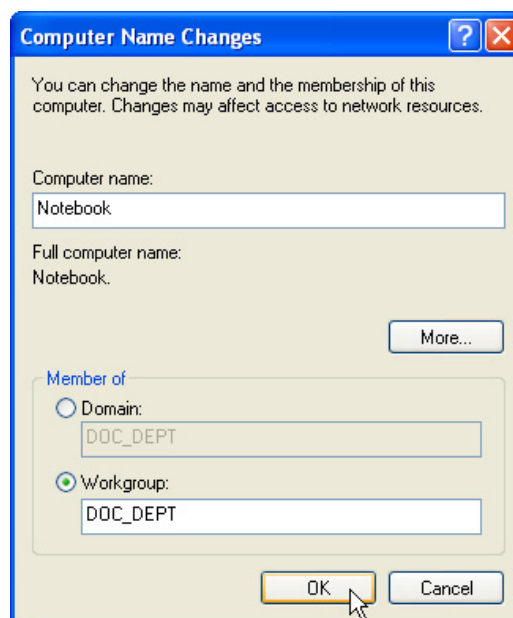
You cannot use spaces or symbols in the computer name. In the example here, a warning is given when trying to use "Notebook PC". You can use the single word "Notebook" instead.





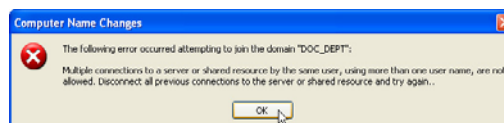
(4a) Domain:

The primary server in the domain will perform routing functions and security verifications for your computer. Select **Domain** and enter an existing domain you wish to join.
NOTE: After clicking “OK”, you will be asked for the Domain Controller’s Administrator password to join the domain in Windows XP.

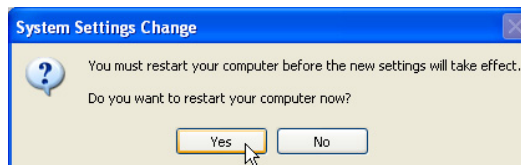
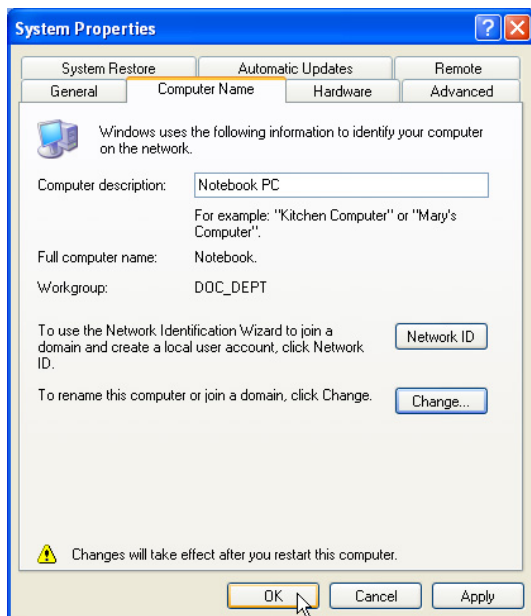


(4b) Workgroup:

If your network does not have a domain or you are not authorized to join a domain, select Workgroup and type in an existing name or create your own (by typing an unused workgroup name)

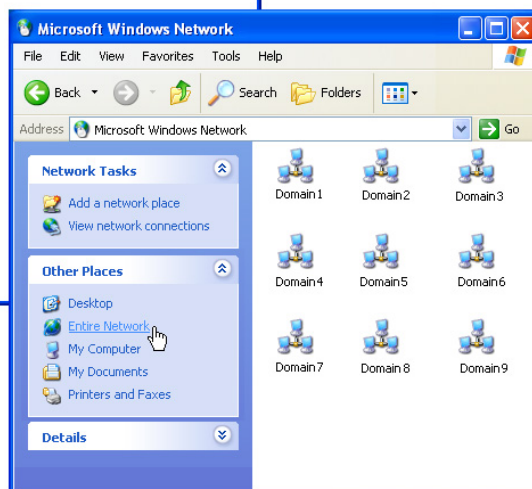


Administrator Name or Password not accepted: You cannot login with the Administrator name and use one password, then use the Administrator name with another password to add to a domain. You must login using another name. See Windows documentation to “Add New User” from User Accounts in the Control Panel.



- (5) After you restart your computer, you should see some contents through Entire Network.

Viewing Your Network



- (6) Clicking on "My Network Places" will display networks which you have installed protocols for. Clicking a network protocol such as "MS Windows Network" will display all the servers available under that protocol.

BIOS Setup

BIOS Setup Program	58
Updating your BIOS	59
Main Menu	61
Primary Master (sub-menu)	63
Secondary Master (sub-menus)	65
Display Menu	66
Advanced Menu	67
I/O Device Configuration (sub-menu)	68
Security Menu	70
Power Menu	72
Boot Menu	73
Exit Menu	74

BIOS Setup Program

This Notebook PC supports a programmable EEPROM that stores the BIOS software and can be updated using the provided flash memory writer utility. This Section will guide you through the BIOS setup program by providing clear explanations for all the options. A default configuration has already been set. If you are either installing new devices or expanding main memory, you will need to enter the BIOS Setup to reconfigure your Notebook PC.

A battery backed-up CMOS RAM is used to record some basic system hardware information: clock, date, time, the error handling, and etc., even when the power is off. When the Notebook PC is turned back on, the system is configured with the values stored in the CMOS RAM.

The settings made in the BIOS Setup program intimately affect how the Notebook PC performs. It is important, therefore, to first understand all the Setup options, and second, to make settings appropriate for the way you use the Notebook PC.

The BIOS (Basic Input and Output System) Setup is a menu driven software utility that enables you to make changes to the system configuration and tailor your Notebook PC to reflect installed hardware, alter performance, and setup power saving functions. BIOS setup is used if you are setting up the Notebook PC for the first time, reconfiguring your system, or prompted to “**Run Setup**” during bootup. This section describes how to configure your system using this utility.

Even if you are not prompted to use the Setup program, at some time in the future you may want to change the configuration of your Notebook PC. For example, you may want to enable the Security Password Feature or make changes to the power management settings. It will then be necessary to reconfigure your system using the BIOS setup program so that the computer can recognize these changes and record them in the CMOS RAM of the EEPROM.

The Setup program has been designed to make it as easy to use as possible. It is a menu-driven program, which means you can scroll through the various sub-menus and make your selections among the predetermined choices.

When you start up the computer, press [F2] to call up the Setup utility.



NOTE: Because the BIOS software is constantly being updated, the following BIOS screens and descriptions are for reference purposes only and may not exactly reflect your BIOS screens.

Updating your BIOS

This Notebook PC supports an easy-to-use BIOS update software called “WINFLASH” which is installed through the provided support CD. If you need help installing or using “WINFLASH”, refer to the “**Driver & Utility Manual**”.

BIOS Menu Bar



The top of the screen has a menu bar with the following selections:

MAIN	Use this menu to make changes to basic system configurations.
DISPLAY	Use this menu to make changes to the Notebook PC's LCD display.
ADVANCED	Use this menu to enable and make changes to the advanced features
SECURITY	Use this menu to set passwords and control access to the BIOS setup menu.
POWER	Use this menu to configure and enable Power Management features.
BOOT	Use this menu to configure system devices used to load the Operating System.
EXIT	Use this menu to load or save settings and to exit the BIOS setup program.

To access the menu bar items, press the right or left arrow key on the keyboard until the desired item is highlighted.

BIOS Legend Bar

At the bottom of the Setup screen you will notice a legend bar. The keys in the legend bar allow you to navigate through the various setup menus. The following table lists the keys found in the legend bar and those that are not with their corresponding alternates and functions.

Navigation Key(s) Function Description

[F1] or [Alt H]	Displays the General Help screen from anywhere in the BIOS Setup
[Esc] or [Alt X]	Jumps to the Exit menu or returns to the main menu from a sub-menu
← or → (keypad arrow)	Selects the menu item to the left or right
↑ or ↓ (keypad arrows)	Moves the highlight up or down between fields
– (minus) or [F5]	Scrolls backward through the values for the highlighted field
+ (plus) or [F6] or space	Scrolls forward through the values for the highlighted field
[Enter]	Brings up a selection menu for the highlighted field
[Home] or [PgUp]	Moves the cursor to the first field
[End] or [PgDn]	Moves the cursor to the last field
[F9]	Resets the current screen to its Setup Defaults
[F10]	Saves changes and exits Setup

General Help

In addition to the Item Specific Help window, the BIOS setup program also provides a General Help screen. This screen can be called up from any menu by simply pressing [F1] or the [Alt] + [H] combination. The General Help screen lists the legend keys with their corresponding alternates and functions.

Scroll Bar

When a scroll bar appears to the right of a help window, it indicates that there is more information to be displayed that will not fit in the window. Use [PgUp] and [PgDn] or the up and down arrow keys to scroll through the entire help document. Press [Home] to display the first page, press [End] to go to the last page. To exit the help window, press [Enter] or [Esc].

Sub-Menu

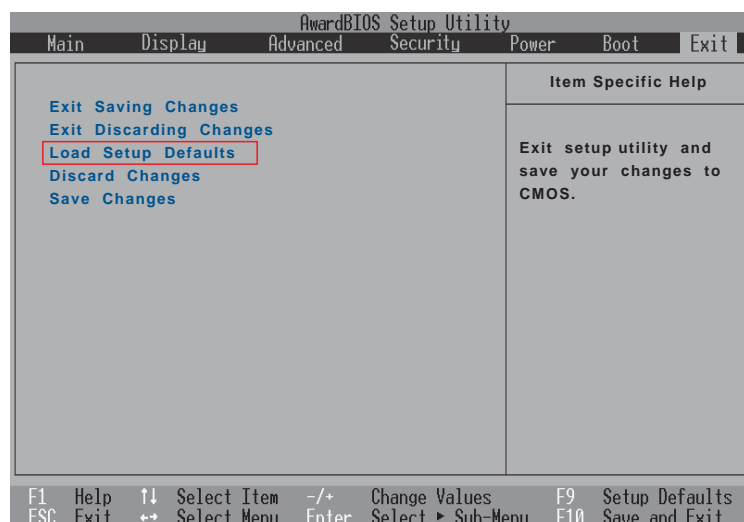


Note that a right pointer symbol (as shown in the left view) appears to the left of certain fields. This pointer indicates that a sub-menu can be launched from this field. A sub-menu contains additional options for a field parameter. To call up a sub-menu, simply move the highlight to the field and press [Enter]. The sub-menu will then immediately appear. Use the legend keys to enter values and move from field to field within a sub-menu just as you would within a menu. Use the [Esc] key to return to the main menu.

Take some time to familiarize yourself with each of the legend keys and their corresponding functions. Practice navigating through the various menus and sub-menus. While moving around through the Setup program, note that explanations appear in the Item Specific Help window located to the right of each menu. This window displays the help text for the currently highlighted field.

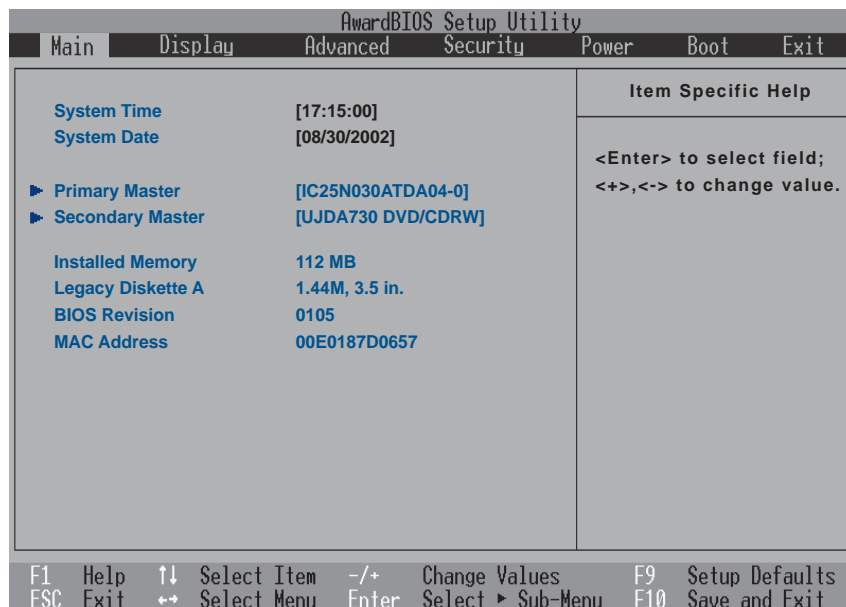
Resetting Your BIOS

If you ever hear “resetting your BIOS”, it entails pressing [F2] on bootup to enter BIOS setup and then selecting **Load Setup Defaults** on the “Exit” menu.



Main Menu

When the Setup program is accessed, the main menu screen appears as shown:



NOTE: In the following BIOS item descriptions, the item headings in square brackets represent the default settings for those fields.

System Time

Sets your system to the time that you specify (usually the current time). The format is hour, minute, second. Insert the appropriate information. Use the [Tab] or [Shift Tab] keys to move between the hour, minute, and second fields.

System Date

Sets your system to the date that you specify (usually the current date). The format is month, day, year. Type in the appropriate information. Use the [Tab] or [Shift Tab] keys to move between the month, day, and year fields.

>Primary Master (described later)

>Secondary Master (described later)

Installed Memory [112 MB] (display field)

This field displays the amount of extended memory as detected by the system after deducting any memory shared by the display. Unfortunately, this will not tell you how much is onboard and how much is added to the SO-DIMM socket. You must visually inspect the SO-DIMM socket if you are considering expanding your memory. You cannot make changes to this field. This is a display only field.

BIOS Revision [0103] (display field)

This displays the current BIOS version in the Notebook PC's flash EEPROM.

MAC Address [00E018000006] (display field)

This displays the MAC address of the internal network device. The MAC address should be different on each computer or networking device.

Primary Master (sub-menu)

This field is used to configure the primary IDE drive installed in the system. To configure a hard disk drive, select this sub-menu from the **Main** menu and press the Enter key to enter this sub-menu.

AwardBIOS Setup Utility		
Main		
Primary Master [IC25N030ATDA04-0]		Item Specific Help
Type:	[Auto]	<Enter> to select the type of the IDE drive. [User Type HDD] allows you to set each entry on your own. WARNING: Ultra DMA mode 3/4/5 can be enabled only when BIOS detects shielded 80-pin cable.
Cylinders	[1024]	
Heads	[255]	
Sectors	[63]	
CHS Capacity	8422MB	
Maximum LBA Capacity	30005MB	
Multi-Sector Transfers	[Maximum]	
SMART Monitoring	[Disabled]	
PIO Mode	[4]	
Ultra DMA Mode	[5]	
F1 Help	↑↓ Select Item	-/+ Change Values
ESC Exit	↔ Select Menu	Enter Select ► Sub-Menu
		F9 Setup Defaults
		F10 Save and Exit



NOTE: Before attempting to configure a hard disk drive, make sure you have the configuration information supplied by the manufacturer of the drive. Incorrect settings may cause your system to not recognize the installed hard disk. To allow the BIOS to detect the drive type automatically, select [AUTO].

Type: [Auto]

Select **Auto** to automatically detect an IDE type drive. This option only works with standard built-in IDE drives. If automatic detection is successful, the correct values will be filled in for the remaining fields on this sub-menu.

To configure a drive manually, select **User Type HDD**. Manually enter the number of cylinders, heads and sectors per track for your drive. Refer to your drive documentation or look on the drive for this information. If no drive is installed or if you are removing a drive and not replacing it, select **None**. Set the type to **CD-ROM** to support a CD-ROM or DVD-ROM drive.

Translation Method

Translation method allows you to select the sector addressing method. **Match Partition Table** is recommended if there is already an OS on the hard drive you are installing to this Notebook PC. **Manual** allows you to specify cylinders, heads, and sectors. **[LBA]** When Logical Block Addressing is enabled, 28-bit addressing of the hard drive is used without regard for cylinders, heads, or sectors. Note that Logical Block Access may decrease the access speed of the hard disk. However, LBA Mode is necessary for drives with greater than 504MB in storage capacity. The configuration options are: [LBA] [LARGE] [Normal] [Match Partition Table] [Manual]

Cylinders []

This field configures the number of cylinders. Refer to your drive documentation to determine the correct value to enter into this field. **NOTE:** To make changes to this field, the **Type** field must be set to **User Type HDD** and “Translation Method” must be set to **Manual**.

Heads []

This field configures the number of read/write heads. Refer to your drive documentation to determine the correct value to enter into this field. **NOTE:** To make changes to this field, the **Type** field must be set to **User Type HDD** and “Translation Method” must be set to **Manual**.

Sectors []

This field configures the number of sectors per track. Refer to your drive documentation to determine the correct value to enter into this field. **NOTE:** To make changes to this field, the **Type** field must be set to **User Type HDD** and “Translation Method” must be set to **Manual**.

CHS Capacity []

This field shows the drive’s CHS capacity calculated automatically by the BIOS from the drive information you entered.

Maximum LBA Capacity []

This field shows the drive’s maximum capacity calculated automatically by the BIOS from the drive information you entered.

Multi-Sector Transfers [Maximum]

This option automatically sets the number of sectors per block to the highest number supported by the drive. This field can also be configured manually. Note that when this field is automatically configured, the set value may not always be the fastest value for the drive. Refer to the documentation that came with your hard drive to determine the optimal value and set it manually. **NOTE:** To make changes to this field, the **Type** field must be set to **User Type HDD**. The configuration options are: [Disabled] [2 Sectors] [4 Sectors] [8 Sectors] [16 Sectors] [32 Sectors] [Maximum]

SMART Monitoring [Disabled]

Self-Monitoring Analysis and Reporting Technology (S.M.A.R.T.) is an interface between a computer's BIOS and hard disk. It is a feature of the Enhanced Integrated Drive Electronics (EIDE) technology that controls access to the hard drive. If S.M.A.R.T is enabled, the BIOS can receive analytical information from the hard drive and determine whether to send the user a warning message about possible future failure of the hard drive. Ideally, this should allow you to take proactive actions to prevent impending disk crashes.

PIO Mode []

When enabled, this option speeds up communication between the system and the IDE controller by using enhanced I/O transfer modes (PIO Modes). **NOTE:** To make changes to this field, the **Type** field must be set to **User Type HDD**. The configuration options are: [0] [1] [2] [3] [4]

Ultra DMA Mode []

This field auto detects Ultra DMA capability (for improved transfer speeds and data integrity) for compatible IDE (Integrated Disk Electronics) devices. Set to Disable to suppress Ultra DMA capability.

NOTE: To make changes to this field, the **Type** field must be set to **User Type HDD**. The configuration options are: [0] [1] [2] [3] [4] [5] [Disabled]. The following is for your reference:

Mode 0 = 16.7MB/s	Mode 1 = 25.0MB/s
Mode 2 = 33.3MB/s (ATA/33)	Mode 3 = 44.4MB/s
Mode 4 = 66.7MB/s (ATA/66)	Mode 5 = 100MB/s (ATA/100)

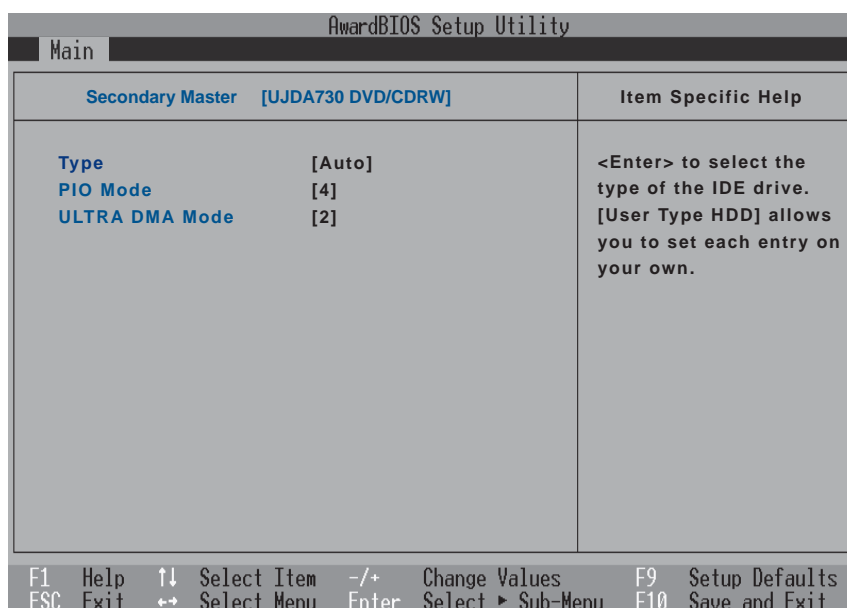


NOTE: After using the legend keys to make your selections on this sub-menu, press the [Esc] key to exit back to the Main menu. When the Main menu appears, you will notice that the drive size appears in the field for the hard disk drive that you just configured.

Secondary Master (sub-menus)

This field is used to configure the secondary IDE drive installed in the system. To configure a hard disk drive, select this sub-menu from the **Main** menu and press the Enter key to enter this sub-menu.

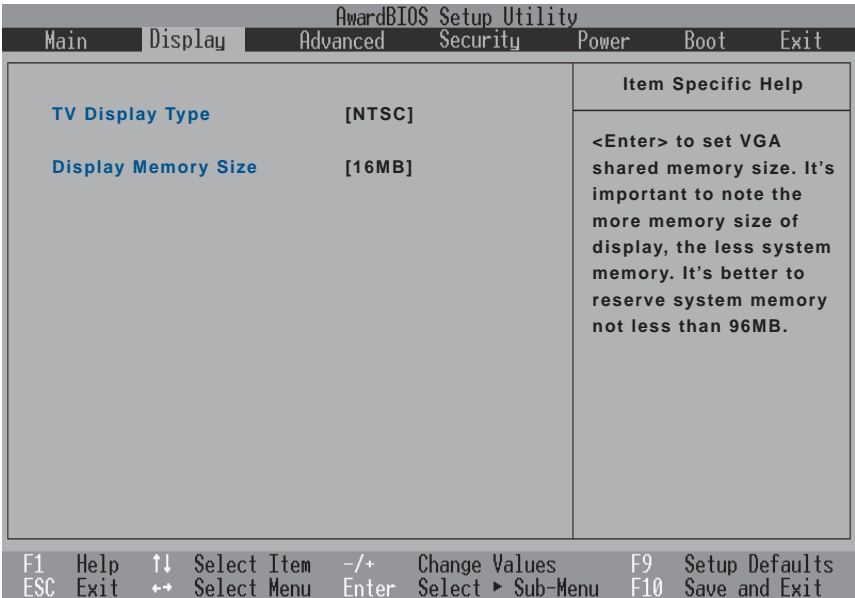
The fields and options on this sub-menu are the same as the previous menu described earlier. Leave on the default setting of Auto.



NOTE: The Secondary drive displayed here is for example only. The actual display will be dependent on the drive you have installed in your Notebook PC. After using the legend keys to make your selections in this sub-menu, press the [Esc] key to return to the Main menu.

Display Menu

Selecting Display from the main menu bar displays the Display menu as shown below.



TV Display Type [NTSC]

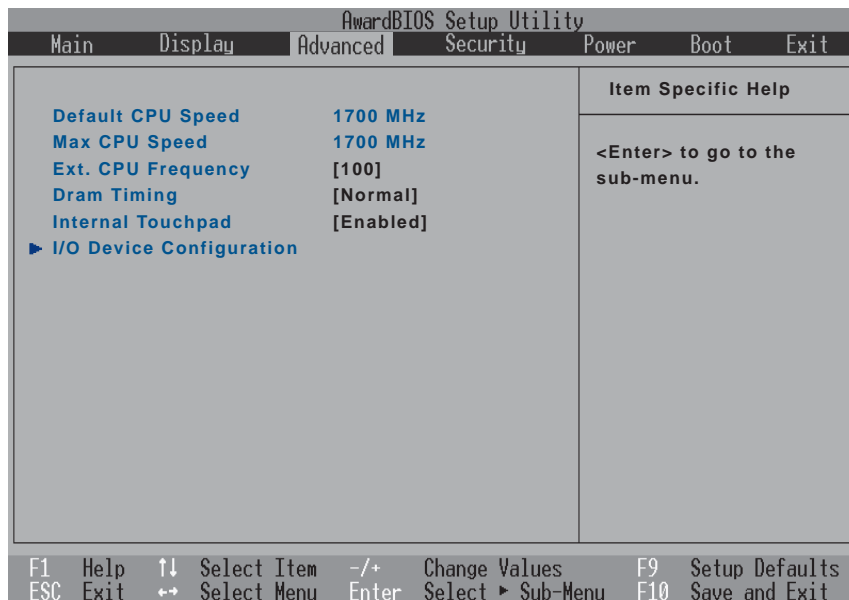
This sets the video synchronization mode for your video output device (television or video projector). The setting depends on the territory that your video output device is manufactured for. The configuration options are: [NTSC] [PAL]

Display Memory Size [16 MB]

The display memory is shared with the system memory. This sets the memory allocated to the display. The configuration options are: [16MB] [32MB] [64MB]

Advanced Menu

Selecting Advanced from the main menu bar displays the Advanced menu as shown below.



Default CPU Speed [1700 MHz] (display field)

This displays the normal speed of the Notebook PC's CPU.

Max CPU Speed [1700 MHz] (display field)

This displays the current speed of the Notebook PC's CPU in case overclocking was made.

Ext. CPU Frequency [100]

This sets the current external CPU frequency. You can select higher frequencies in order to overclock the CPU (increase performance). Be aware that overclocking the CPU will put increased stress on the CPU which may cause computer crashes or shortened life of the CPU. The configuration options are: [100]...[140]

Dram Timing [Normal]

This sets the current memory frequency. You can select slower or faster frequencies in order to decrease or increase performance. Be aware that overclocking the memory will put increased stress on the memory which may cause computer crashes or shortened life of the memory. The configuration options are: [Safe] [Normal] [Fast] [Extreme]

Internal Touchpad [Enabled]

This allows you to turn ON or OFF the Notebook PC's built-in touchpad. Some external pointing devices have extra functions that may not function without turning OFF the Notebook PC's touchpad. The configuration options are: [Enabled] [Disabled]

>I/O Device Configuration (described on next page)

Pressing [Enter] when this field is highlighted calls up a sub-menu for configuring the Notebook PC's serial and parallel ports.

I/O Device Configuration (sub-menu)

AwardBIOS Setup Utility		
Advanced		
I/O Device Configuration		Item Specific Help
IR Port	[2F8H/IRQ3]	<Enter> to select the I/O Address & IRQ for Infrared.
DMA Channel	[1]	
Parallel Port	[378H/IRQ7]	
Mode	[ECP]	
ECP DMA Select	[3]	
F1 Help	↑↓ Select Item	-/+ Change Values
ESC Exit	↔ Select Menu	Enter Select ► Sub-Menu
F9	Setup Defaults	
F10	Save and Exit	



NOTE: The presence of sub-items in this menu is dependent on certain relevant settings.



WARNING! Changing the default address and IRQ settings for Serial Port or Parallel Port can cause conflicts with other system devices or installed peripherals.

IR Port [2F8H/IRQ3]

This field allows you to configure the Notebook PC’s serial COM1 port. The configuration options are: [3F8H/IRQ4] [2F8H/IRQ3] [3E8H/IRQ4] [2E8H/IRQ3] [Disabled]

DMA Channel: [1]

The **DMA Channel** field allows you to configure the Parallel port DMA Channel for the selected **ECP** mode. The configuration options are: [1] [3]

Parallel Port: [378H/IRQ7]

This field allows you to configure the Notebook PC parallel port. The configuration options are: [Disabled] [3BCH/IRQ7] [378H/IRQ7] [278H/IRQ5]

Mode: [ECP]

This field allows you to configure the Notebook PC parallel port transmission mode. The configuration options are: [Normal] [EPP] [ECP]

EPP Mode: When the **EPP** mode is selected, the standard and bidirectional modes are also available. The EPP operates on a two phase cycle. First, the host selects the register within a device for subsequent operations. Second, the host performs a series of read and/or write byte operations to the selected register. There are four operations supported by EPP: Address Write, Data Write, Address Read, and Data Read. All operations are performed asynchronously.

ECP Mode: The port is both software and hardware compatible with existing parallel ports so that it may be used as a standard printer mode if ECP is not required. ECP mode provides an automatic high burst-bandwidth channel that supports DMA for ECP in both the forward (host to peripheral) and reverse (peripheral to host) direction.

ECP DMA Select: [3]

This field allows you to configure the Parallel port DMA Channel for the selected **ECP** mode. The configuration options are: [1] [3]



NOTE: After using the legend keys to make your selections for the I/O Device Configuration sub-menu, press the [Esc] key to exit back to the Advanced menu.

Security Menu

The Notebook PC’s advanced system of security allows you to set a password to prevent unauthorized access to system resources, data, and the BIOS Setup Program. This Section covers each parameter of the Security Setup. Selecting Security from the menu bar displays the following menu:

AwardBIOS Setup Utility													
Main		Display		Advanced		Security		Power		Boot		Exit	
<div>System Password [Enter]</div> <div>Hard Disk Password [Enter]</div>								Item Specific Help					
								<div>Supervisor password controls full access.</div> <div><Enter> to change password ; <Enter> again to disable password.</div>					
F1		Help		↑↓		Select Item		-/+		Change Values		F9	
ESC		Exit		↔		Select Menu		Enter		Select ► Sub-Menu		F10	
												Setup Defaults	
												Save and Exit	

The BIOS Setup program allows you to specify passwords in the Security menu. The passwords control access to the BIOS and certain Security menu options during system startup. The passwords are not case sensitive. In other words, it makes no difference whether you enter a password using upper or lowercase letters.

The BIOS Setup program allows you to specify two separate passwords: a Supervisor password and a User password. When disabled, anyone may access all BIOS Setup program functions. When enabled, the Supervisor password is required for entering the BIOS Setup program and having full access to all Security menu options.

System Password [Enter]

The system password protects the BIOS settings. When “Enabled”, you will be prompted for a password after you press [F2] to enter BIOS setup.

To Enable: Select “Enter” and press [Enter], type a password and press [Enter], type the same password again and press [Enter] to confirm. (You can type up to eight alphanumeric characters. Symbols and other keys are ignored.)

To Disable: Select “Set” and press [Enter] without entering a password.

Hard Disk Password [Enter]

A hard disk password places a protection on the hard disk drive so that a password is necessary in order to access the hard disk drive. When “Enabled”, the hard disk drive will be protected as follows:

- The protected hard disk drive will prompt for a password when accessed on the Notebook PC.
- The protected hard disk drive cannot be used as a master or slave drive on another computer.
- The protected hard disk drive cannot be formatted.

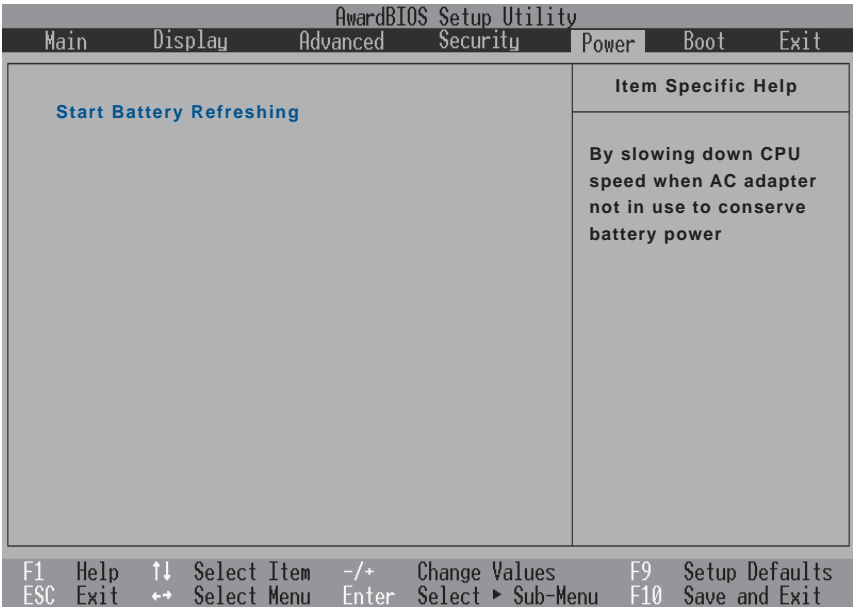
To Enable: Select “Enter” and press [Enter], type a password and press [Enter], type the same password again and press [Enter] to confirm. (You can type up to eight alphanumeric characters. Symbols and other keys are ignored.)

To Disable: Select “Set” and press [Enter], enter the password and press [Enter].

NOTE: If “Password on Boot” and “Hard Disk Password” are both “Enabled”, the “Hard Disk Password” will be required first.

Power Menu

The power management settings are controlled by the operating system. This menu only has one function as follows:

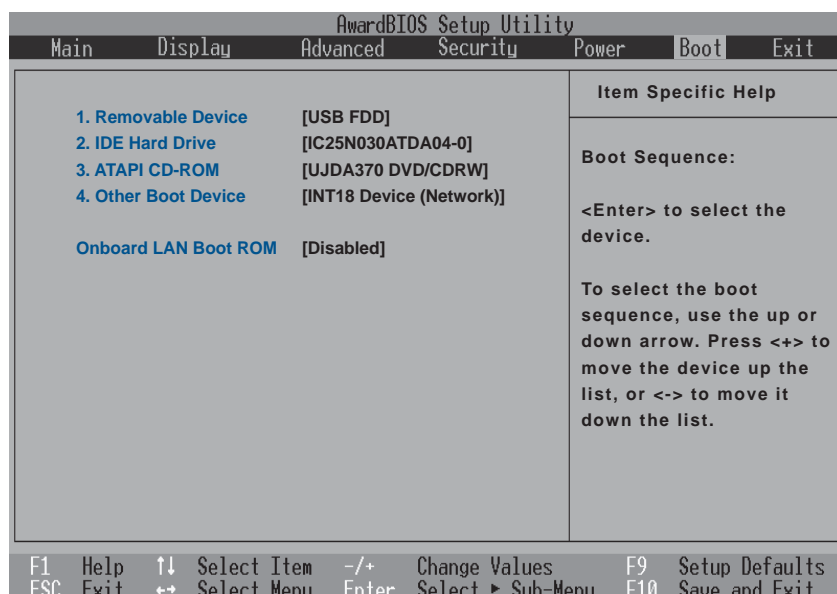


Start Battery Refreshing

This function will start a software program to remove memory effects in the battery and recalibrate the battery gauge. Even though this Notebook PC uses a Lithium-Ion battery which is not prone to memory effects, memory effects will still occur at the end of the battery’s life cycle. Remember that all rechargeable batteries only have a definite number of charge and discharge cycles depending on environment and quality of the battery pack. **Follow the instructions shown on the screen.**

Boot Menu

The Boot menu allows the user to specify the order in which the Notebook PC is to check for a device to boot the system. To make changes, select **Boot** from the menu bar and the following screen appears:



Boot Sequence

1. **Removable Device**
2. **IDE Hard Drive**
3. **ATAPI CD-ROM**
4. **Other Boot Device**

Onboard LAN Boot ROM - Select Network drive bootup capability as [Disabled] or [Enabled].

The Boot menu allows you to select among the three possible boot devices listed using the up and down arrow keys. By using the [+] or [Shift =] keys, you can promote devices and by using the [-] key, you can demote devices. Press [Enter] to select the specific device or **Disabled** to never boot from that device.

Promotion or demotion of devices alters the priority which the system uses to search for a boot device on system power up. The following are explanations of the devices listed in the boot sequence:

Removable Device refer to the floppy disk used in the internal or USB floppy disk drive.

IDE Hard Drive refers to the internal built-in hard disk drive.

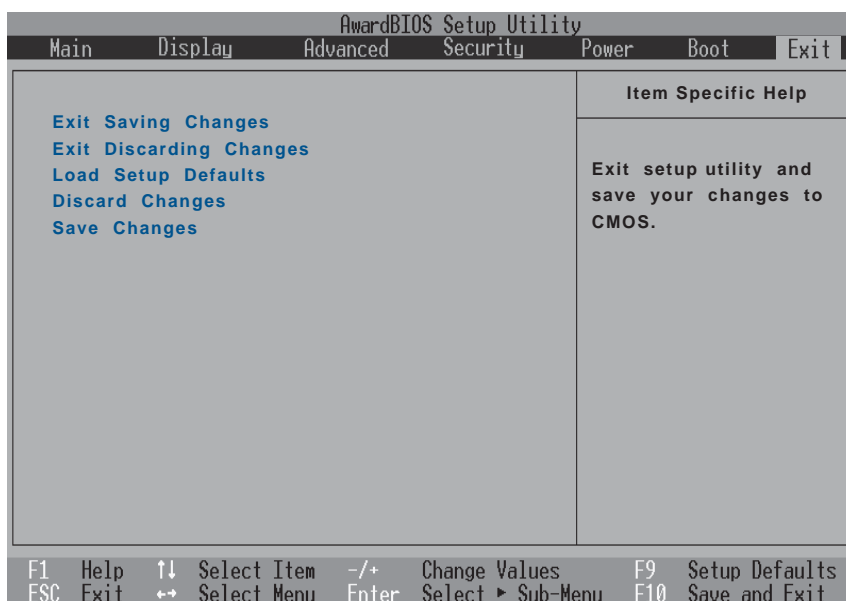
ATAPI CD-ROM refers to either the built-in CD-ROM drive or DVD-ROM drive.

Other Boot Device currently refers to booting from a network drive.

NOTE: To boot from LAN, set this item to the top and Enable “Onboard LAN Boot ROM”.

Exit Menu

Once you have made all of your selections from the various menus in the Setup program, you should save your changes and exit Setup. Select **Exit** from the menu bar to display the following menu:



NOTE: Pressing the [Esc] key does not exit this menu. You must select one of the options from this menu or a menu bar item to exit this menu.

Exit Saving Changes

Once you are finished making your selections, choose this option from the Exit menu to ensure the values you selected are saved to the CMOS RAM. The CMOS RAM is sustained by an onboard backup battery and stays on even when the Notebook PC is turned off. Once this option is selected, a confirmation is asked. Select **Yes** to save changes and exit.

Exit Discarding Changes

This option should only be used if you do not want to save the changes you have made to the Setup program. If you have made changes to the fields other than system date, system time, and password, the system will ask for confirmation before exiting.

Load Setup Defaults

This option allows you to load the default values for each of the parameters on the Setup menus. When this option is selected or if [F9] is pressed, a confirmation is requested. Select **Yes** to load default values programmed into the BIOS file (the default values may change from one BIOS version to another). You can now select **Exit Saving Changes** or make other changes before saving the values to the EEPROM.

Discard Changes

This option allows you to discard the selections you made and restore the values you previously saved. After selecting this option, all selections are updated and a confirmation is requested. Select **Yes** to discard any changes and load the previously saved values.

Save Changes

This option saves your selections without exiting the Setup program. You can then return to other menus and make changes. After selecting this option, all selections are saved and a confirmation is requested. Select **Yes** to save any changes to the EEPROM.

