

ASUS SmartLogon

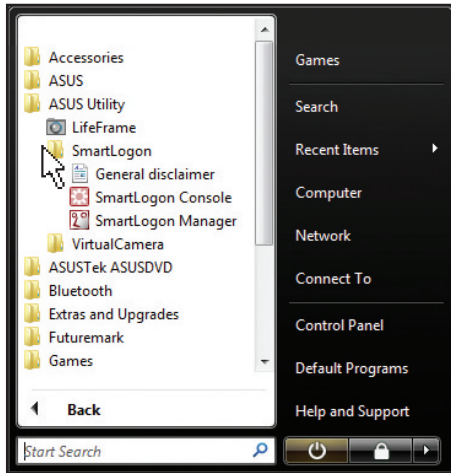
ASUS SmartLogon allows you to use your digital face recognition technology to replace passwords or fingerprints for fast and securing logging into Windows. It can be used concurrently with Windows password or fingerprint logon on the Windows logon screen.



IMPORTANT: I agree and acknowledge that ASUS SmartLogon is PROVIDED "AS IS" WITHOUT ANY EXPRESS OR IMPLIED WARRANTIES. ASUSTeK Computer Inc. shall have no liability if non-registered users logon through ASUS SmartLogon or if I fail to logon through ASUS SmartLogon. I agree to waive any claims arising from the use of ASUS SmartLogon against ASUSTeK Computer Inc. and its affiliates.

ASUS SmartLogon

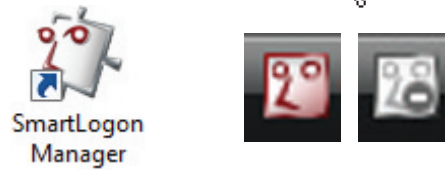
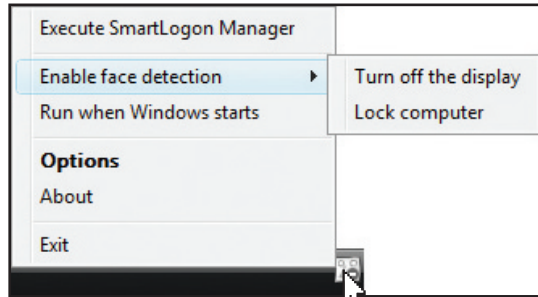
Program Folder



You can launch ASUS **FaceConsole** from “Windows Start | All Programs | ASUS Utility | SmartLogon” or from the desktop icon if it is not already running.

User Account Control window will appear that a program needs your permission to continue. Click **Continue** button to start “SmartLogon.”

Taskbar Icon and Menu



When face detection is enabled (Turn off display or Lock computer), the **FaceConsole** taskbar icon will appear red. When disabled, it will appear gray with a dash on the bottom right of the icon.

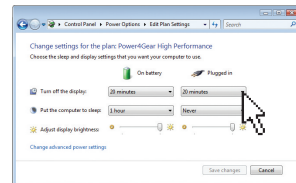
Left or right-click the **FaceConsole** taskbar icon to show a menu panel. Select an option here.

Menu Items

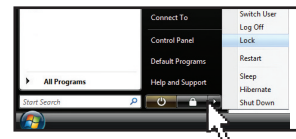
Execute SmartLogon Manager: Launches the SmartLogon utility to register faces.

Enable face detection: (Mouse over for sub-menu)

-Turn off display: When checked, ASUS SmartLogon will detect whether a registered user’s face is present within a user-set time. If not, the display panel will be turned OFF. (This is similar to Windows Power Options to turn OFF the display when keyboard or mouse not used for a period of time. See Windows function on right.)



-Lock computer: When checked, ASUS SmartLogon will detect whether a registered user’s face is present within a user-set time. If not, Windows will be locked. (This is the same as selected “Lock this computer” from Windows start. See Windows function on right.)



By Start lock icon or > sub-menu “Lock”

ASUS SmartLogon

Menu Items (cont.)

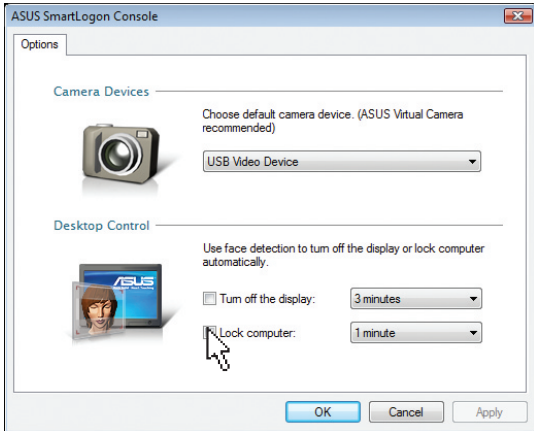
Run when Windows starts: Start FaceConsole in the background each time with Windows. This option will not affect other options (Turn off display, Lock computer, or using SmartLogon.) SmartLogon is enabled by a check box below the SmartLogon manager. (add image)

Options: Configure settings.

About: Logo and version information.

Exit: Close SmartLogon (including background) and remove from taskbar. Will restart if you selected "Run when Windows starts".

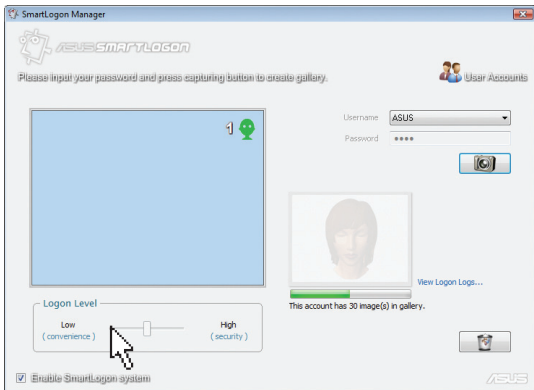
Options



Camera Devices: The built-in camera is selected as default. Change if necessary.

Desktop Control: Check box and set timer to enable. See previous "Menu Items" for descriptions.

SmartLogon Manager



Enable SmartLogon System: ASUS SmartLogon will be usable after a user creates a gallery and select this option using the check box.

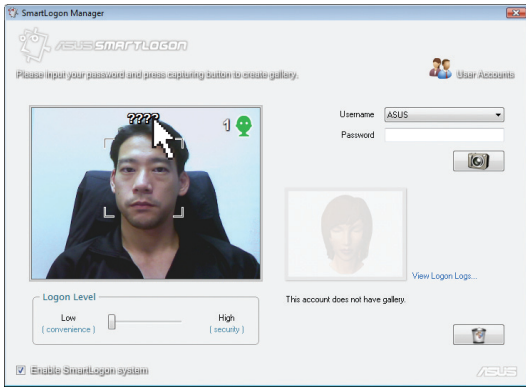
SmartLogon icon on Windows



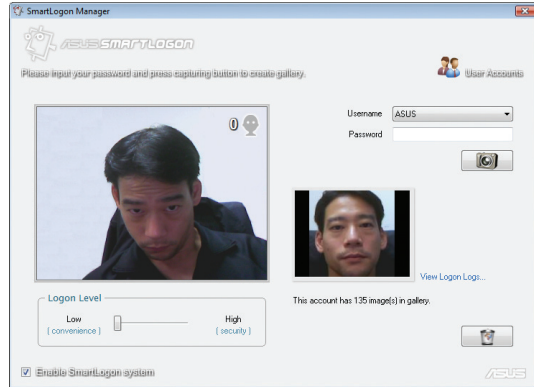
When ASUS SmartLogon is ready to use, an icon will show on the Windows logon screen.

ASUS SmartLogon

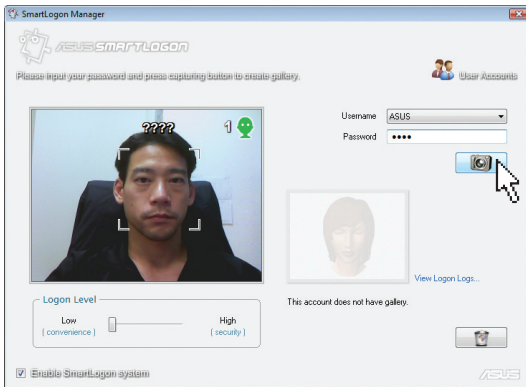
SmartLogon Manager



Before a face is registered, question marks will appear above the head. The number 1 in the top right of the camera screen is the number of faces detected.

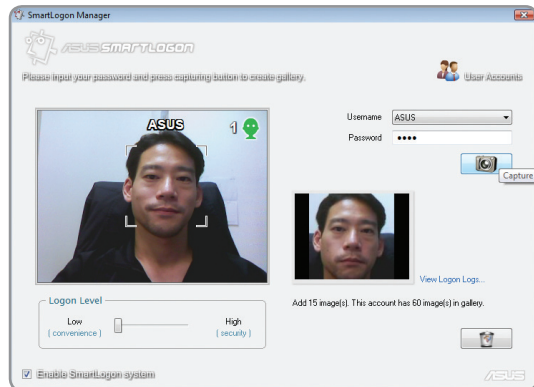


You must look straight into the camera or else face recognition will not be possible. There is no question marks or user name shown above the head in this screen. The number 0 in the top right of the camera screen is the number of faces detected.



Select a user name and enter a password. Your password is used when for some reason your face fails to logon to Windows.

When your face is detected, click the camera button to record your face images. Many images will be recorded each time. You can change your facial expressions to record different aspects for the SmartLogon database.



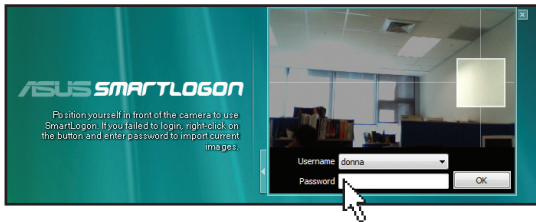
After you registered a face, the user's name will appear above the head.

You can register other user faces under different user names and passwords.

Click the trash can icon on the lower right to delete the face images stored in the SmartLogon database.

ASUS SmartLogon

Learning feature



If ASUS SmartLogon fails to work in some environments (like too dark or too bright), click the button and input your password to login to Windows.

ASUS SmartLogon will automatically record current images of these environments. In the future, the user will have a more successful result when logging in using face detection in that environment.

Click the slider button on the logon box, select a user, enter the password, and click OK.

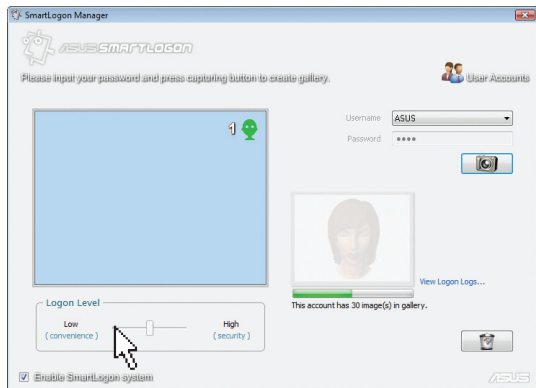
Passwords & multiple users

Changing or removing passwords:
If a user changes or removes a password after creating a gallery, ASUS SmartLogon will ask the user to retype the current password when using SmartLogon.

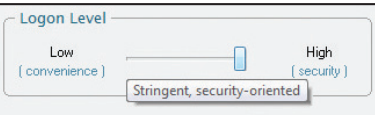
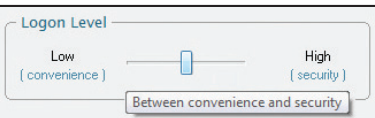
If the password is removed:
No images will be imported. Importing images will only occur for non-empty password accounts.

Multiple user accounts/sharing a computer:
If user "A" locks the computer, other users (B, C, D,...) cannot use ASUS SmartLogon to login. Other users must click "Switch user" and login into their own Windows account with ASUS SmartLogon.

Security Level

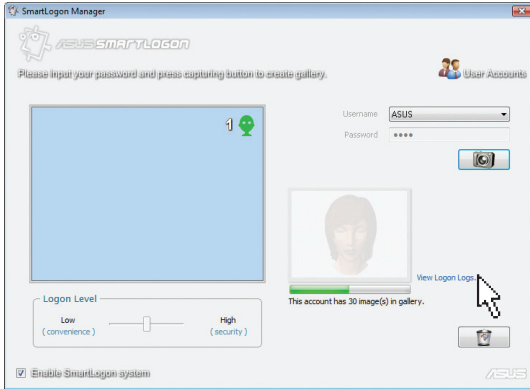


You can change the security level using the slider in order to better protect your Notebook PC from others logging on but may also block yourself if you change your appearance. (Your typed password can still be used to logon.)



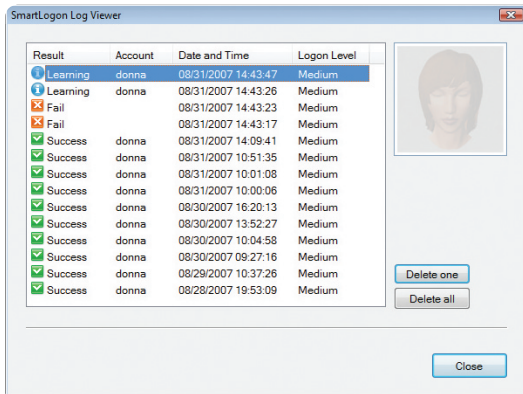
ASUS SmartLogon

SmartLogon Manager



Users can click “View Logon Logs...” in SmartLogon Manager to see a logon log.

Log Viewer



Users can view this log to check when someone tried to login with face detection on your computer.

There are three results “Success”, “Fail”, and “Learning” (when a user inputs a password to login and face captures are imported).

There are buttons on this window to delete the log entries if you wish.