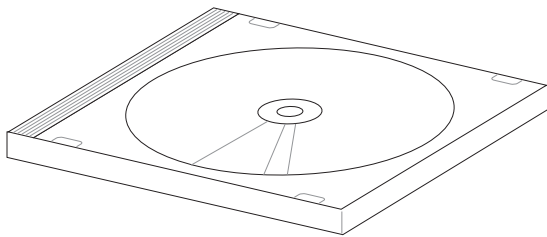


Notebook PC

Drivers and Utilities

User's Manual



E2268 / Oct 2005

Table of Contents

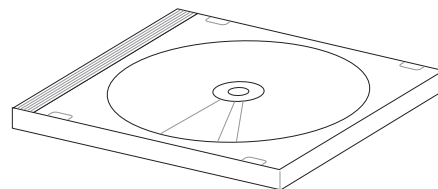
Support CD for Windows	5
New Windows Installation	5
Drivers for Windows	5
Device Manager	10
VGA Driver	13
VGA Driver Setup (Model 1)	14
VGA Driver Setup (Model 2&3)	15
ATK0100 Driver (ACPI)	18
ATK0100 Driver Setup	20
Audio	20
Audio Driver Setup	22
Using CD player in Windows	22
Bluetooth	23
Bluetooth Driver Setup	24
Turning Bluetooth ON or OFF	25
INF Update (Intel)	27
INF Update Driver Setup	28
INTEL Callexico (Wireless LAN)	29
Wireless LAN Driver Setup - Callexico2 (ABG)	30
Wireless LAN Driver Setup - Callexico2 (2200BG)	31
Wireless LAN Utility Introduction	32
Windows Wireless Settings	33
ASUS Wireless LAN	35
ASUS WLAN Driver Setup	36
ASUS WLAN Utility Setup	37
ASUS WLAN Utility Quick Start	38
IR (Infrared)	41
IR (Infrared) Driver Setup	42
LAN	45
LAN Driver Setup	46
Configuring your LAN	47
Joining a Domain or Workgroup (Windows XP)	47
Viewing Your Network	49

Modem	50
Modem Driver Setup	52
Modem Configuration	52
RICOH	54
Ricoh Driver Setup	56
ChkMail	58
ChkMail Setup	60
LiveUpdate	61
LiveUpdate Setup	62
Using LiveUpdate	63
Norton Internet Security	65
Norton Internet Security Setup	66
Internet Proxy Settings	68
Internet Security Main window	69
Internet Security Features	70
Power4 Gear	70
Power4 Gear Setup	72
Power4 Gear	72
Benefits of Power4 Gear	73
Power4 Gear Interface	73
Program Icons	73
Renaming Settings	74
Power4 Gear Configuration	74
Power Saving Details	75
NB Probe	77
NB Probe Setup	78
Using NB Probe	79
Starting NB Probe	79
Using NB Probe Monitoring	80
TouchPad	83
Touchpad Setup	84
Synaptics® TouchPad Features	85
Tap on the Pad Instead of Pressing the Buttons	85
Drag Icons, Windows and Other Objects without Using Buttons	85
Adjust the Overall Touch Sensitivity	86
Customize Buttons and Taps	86
Prevent Accidental Pointing While Typing	87
Scroll Through A Document without Using Scroll Bars	87

Zoom In/Out and Pan on Documents	87
Move the Pointer Long Distances	88
Fine Tune the Pointer Movement	88
Accessories	88
More About the TouchPad	88
Property Pages	88
Scrolling Properties Page	89
Tap Zones Properties Pages	90
More Features Properties Page	91
Button Actions Properties Page	92
Touch Properties Page	93
Edge Motion Properties Page	94
Frequently Asked Questions	95
WINFLASH Setup	99
Using WINFLASH	99
Wireless Console Setup	102
Turning Wireless LAN ON or OFF	103

Support CD for Windows

The Notebook PC you purchased may or may not be preloaded with an operating system. The support CD included with this Notebook PC provides all the necessary drivers and utilities in order for you to use your Notebook PC with Microsoft® Windows® XP (referred to as “Windows” in this User’s Manual).



The levels of hardware and software support may vary depending on the installed operating system. Operating systems not pre-installed on this Notebook PC may produce different results than the ones described in the provided user’s manuals.

If your Notebook PC is not preloaded with any operating system, or you want to install another operating system other than the preloaded one, the following pages will give step-by-step installation procedures for typical system configurations under the Windows® operating system. For application usage, please see the online help provided with each of the applications after installation. The following are contents of a typical support CD. Variations may be found for each territory or language. If the autorun menu does not appear, double clicking the CD-ROM disc drive icon in “My Computer” (may be the (D:) drive or (E:) drive on hard drives with two partitions) or running SETUP.EXE (through Start menu “Run...”) located in the root of the support CD, will bring up the autorun menu.

New Windows Installation

If you install a new operating system on your Notebook PC, there will be many hardware devices without drivers. Use the provided support CD to correct this problem.

Drivers for Microsoft Windows

Next page gives descriptions of each support CD item. Due to ongoing improvements in the support CD, there may be some differences between this User’s Manual and your support CD. The names in quotations are the actual driver names displayed in the System Properties of MS Windows. Windows cannot contain all the device drivers from every manufacturer, with every update; therefore the provided support CD will contain the best driver for your built-in devices and should be used in place of any Windows default drivers.

Some drivers may already be provided in Windows. If you have any problems with these drivers, visit the Microsoft Windows Update site. A link is provided in Microsoft Windows Explorer under “Tools.” The exact controller and driver will vary by model and territory.

Software Drivers

VGA (Display) (Depends on model)

“Mobile Intel(R) 915GM/GMS, 910GML Express Chipset Family” or “ATI MOBILITY RADEON 9600 or 9700 or X600”

Installing the VGA driver first will make viewing other setup screens much easier. This installs display drivers for your operating system in order to properly use the Notebook PC’s built-in graphics controller and to provide optimal display features. Once the display driver is installed, you can change your display’s resolution and color through Display Properties.

This device is shown under Windows Device Manager “**Display adapters.**”

ATK0100 “ATK0100 ACPI UTILITY” Utility

This utility is required for special utilities provided in the support CD. This installs drivers for the Notebook PC’s Advanced Configuration and Power Interface (ACPI) for features utilizing power management functions.

This device is shown under Windows Device Manager “**System devices.**”

Audio “Realtek High Definition Audio” or “Azalia” Driver

This installs audio drivers for your operating system in order to properly use the Notebook PC’s built-in sound controller. All audio functions are configured through Windows and help can be located within Windows documentation or Windows help files.

This device is shown under Windows Device Manager “**Sound, video and game controllers.**”

Bluetooth “USB Bluetooth Driver (CSR)” and “Bluetooth Personal Area Network from TOSHIBA” Driver

This installs audio drivers for your operating system in order to properly use the Notebook PC’s built-in infrared controller for wireless data transfers between devices with infrared ports such as PDAs, phones, printers, and other Notebook PCs.

This device is shown under Windows Device Manager “**Universal Serial Bus controllers**” and “**Network adapters**”.

INF Update

This installs Windows support files for advanced features in new chipsets.

IR “SMC IrCC - Fast Infrared Port” Driver

This installs audio drivers for your operating system in order to properly use the Notebook PC’s built-in infrared controller for wireless data transfers between devices with infrared ports such as PDAs, phones, printers, and other Notebook PCs.

This device is shown under Windows Device Manager “**Infrared devices.**”

Intel Callexico2 / ASUS WLAN (Depends on model)

“Intel(R) PRO/Wireless 2200BG Network Connection” (or ABG) or “ASUS WLAN” Driver

Required on models with internal wireless LAN. Installs the required network driver for the Notebook PC’s optional internal wireless LAN controller. If you purchased the optional internal wireless LAN, you need to install this driver. If you did not purchase the optional internal wireless LAN, you cannot install this driver.

This device is shown under Windows Device Manager “**Network Adapters.**”

LAN “Realtek RTL8139/810x Family Fast Ethernet NIC” Driver

Installs the required LAN (Local Area Network) drivers for the Notebook PC’s built-in PCI Fast-Ethernet controller.

This device is shown under Windows Device Manager “**Network Adapters.**”

Modem “HDAUDIO SoftV92 Data Fax Modem with SmartCP” Driver

Installs the necessary driver in order for your operating system to have the correct files for the Notebook PC with built-in modem and drivers for integration with the internal audio. With third-party software, fax and speaker phone capabilities are possible using this Notebook PC.

This device is shown under Windows Device Manager “**Modems.**”

RICOH “Ricoh R5C841” or “Ricoh R/RL/5C476(II) or Compatible CardBus Controller” Driver

A version of this driver is provided by Microsoft in its Windows XP operating system. The support CD includes this driver called for added enhancements for Windows XP and other Windows versions.

This device is shown under Windows Device Manager “**PCMCIA adapters.**”

Software Utilities

AFLASH2 DOS Utility

This utility allows you to upgrade your Notebook PC’s BIOS in DOS mode. You enter DOS mode by booting to a DOS system on a floppy disk, CD, or USB drive instead of entering the Windows operating system. AFLASH2.EXE can be found in the “Aflash” folder of the support CD. (This utility is not shown in this User’s Manual.)

Check Mail Utility

Installs **Check Mail** utility to monitor and notify you of incoming email messages waiting in your Microsoft® Outlook or Outlook Express Inbox. (This utility may or may not be compatible with other email applications.)

LiveUpdate Utility

This utility helps you easily upgrade your Notebook PC’s BIOS through an Internet connection.

Norton Internet Security 2005 Utility

Installs **Norton Internet Security** to provide comprehensive virus prevention, threat detection, and repair software for your computer. It automatically detects and repairs known viruses. **Norton Internet Security** detects viruses and other potential risks in instant messenger attachments as well as in email messages, Internet downloads, and other files. Easy updating of the virus definitions over the Internet keeps **Norton Internet Security** prepared for the latest threats. **Norton Internet Security** also includes: Security protection features, Personal Firewall, Spam filtering features, and Ad blocking features.

You may skip this software if you have your own antivirus software.

Power4 Gear Utility

Power4 Gear is a custom utility designed for this Notebook PC that allows you to use predefined or user defined values for multi-selectable power saving modes or “gears”. You can “shift” between the “gears” using the taskbar icon or the keys above the keyboard.

NB Probe Utility

Installs **NB Probe** utility to monitor the Notebook PC’s CPU temperature and other resources. This is an optional software to help you better manage your Notebook PC’s resources.

TouchPad “Synaptics PS/2 TouchPad” Utility

Shown under Windows “**Mice and other pointing devices.**” Installs “**Synaptics® TouchPad**” utility. The Notebook PC already supports built-in or externally connected keyboard and PS/2 mouse devices. However, the provided device driver will provide enhancements and features to the TouchPad to increase the functionality of the TouchPad. For detailed information, see the Software Reference in the next section. To access help, right-click the TouchPad icon on the taskbar and select Help.

WinFlash Utility

Installs a BIOS update utility for Windows so that you can conveniently update your Notebook PC’s BIOS without having to restart your Notebook PC in DOS mode.

Wireless Console Utility

Installs a utility to provide an on-screen display for the built-in wireless LAN ON/OFF status. This utility is triggered by the WLAN ON/OFF button.

Drivers Provided in Windows XP

If you have any problems with these drivers, visit the Microsoft Windows Update site. A link is provided in Microsoft Windows Explorer under “Tools.”

1394 (Already supported in Windows XP)

This driver is provided by Microsoft in its Windows XP operating system.

This device is shown under Windows Device Manager “**IEEE 1394 Bus host controllers**”.

AGP (Already supported in Windows XP)

This function is already supported in Windows XP. The support CD also includes a version of this utility for other Windows versions. Installation will not be possible under Windows XP.

This device is shown under Windows Device Manager “**System devices**”.

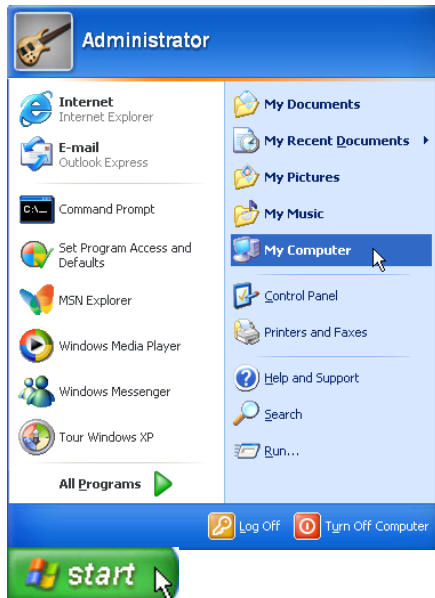
PCMCIA (Already supported in Windows XP)

This driver is provided by Microsoft in its Windows XP operating system.

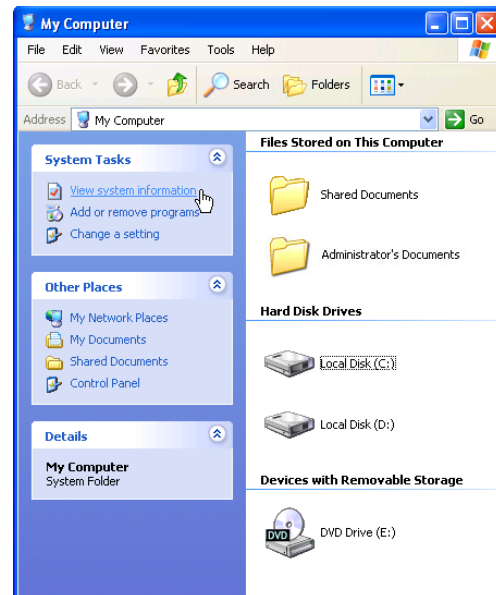
This device is shown under Windows Device Manager “**PCMCIA adapters**”.

Device Manager

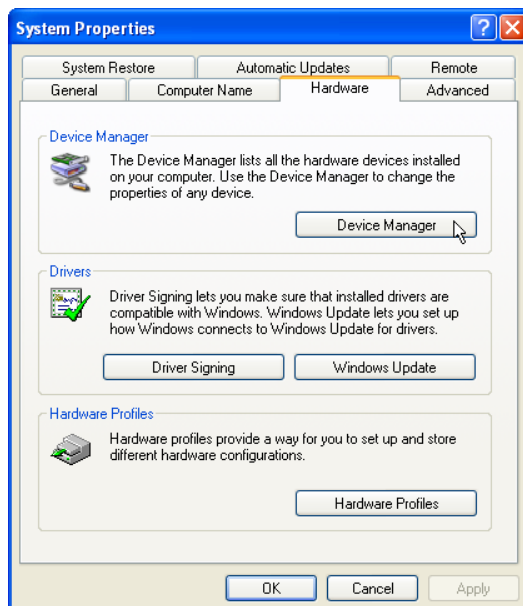
“Device Manager” will be used in many device driver installation, upgrade, and verification processes.



1. Click “start” button.
2. Click “My Computer” icon.



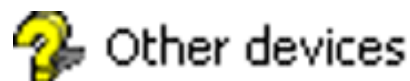
3. Click “View system information” link.



4. Click “Hardware” tab.
5. Click “Device Manager” button.

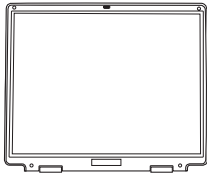
Hardware Devices

After installing your operating system, several question marks will appear under “Other devices” representing hardware devices that Windows cannot recognize. After installing the drivers from the provided support CD. Those question marks will go away.



Software Drivers

Software Drivers



VGA Driver

(It is necessary to install the VGA driver first in order to see other setup screens in their proper sizes.)

Topics Covered:
VGA Driver Setup
Display Settings for Windows XP
Taskbar Menu

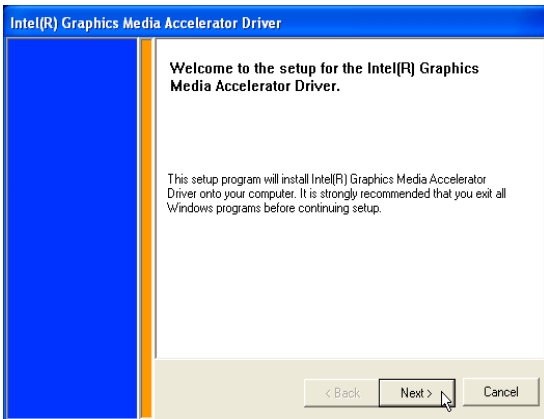
- Before
- Model 1 Other devices
 - Video Controller (VGA Compatible)
 - Model 2 Other devices
 - Video Controller (VGA Compatible)
 - Model 3 Other devices
 - Video Controller (VGA Compatible)

- After
- Display adapters
 - Mobile Intel(R) 915GM/GMS,910GML Express Chipset Family
 - Display adapters
 - ATI MOBILITY RADEON 9600/9700
 - Display adapters
 - ATI MOBILITY RADEON X600

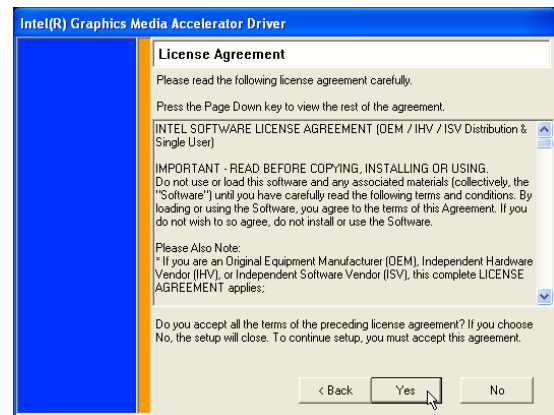
(Screens and drivers may vary depending on your model and operating system.)

VGA Driver Setup (Model 1)

Your VGA driver will depend on the Notebook PC model purchased. Running setup will give you the following wizard.



1. On the "Welcome" screen, click **Next** after reading the message.



2. On the "License Agreement" screen, click **Yes** after reading.

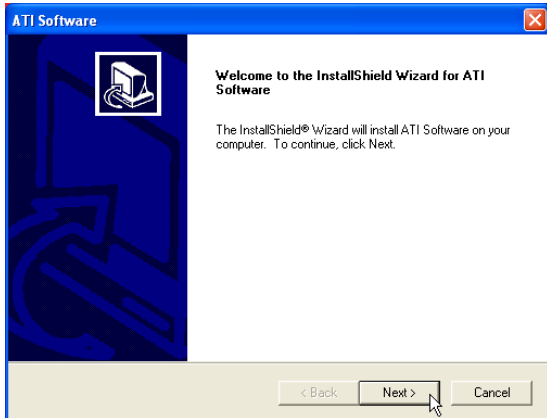


3. When setup is complete, select "Yes..." and click **Finish** in order to restart Windows with a higher screen resolution*.

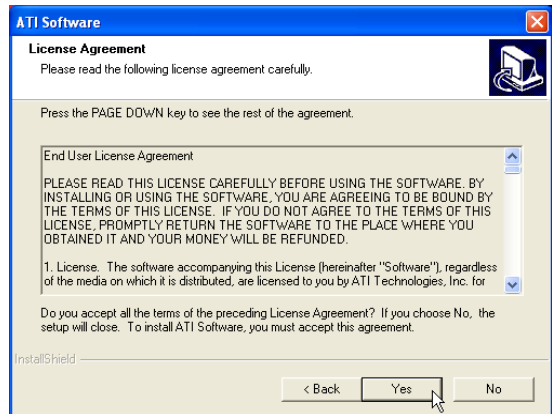
* Windows may have already provided the highest screen resolution support for this graphics controller.

VGA Driver Setup (Model 2&3)

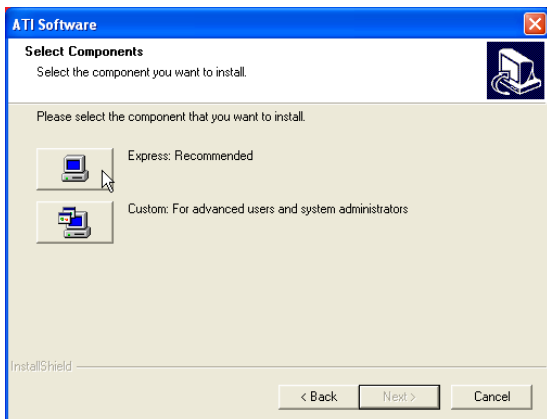
Your VGA driver will depend on the Notebook PC model purchased. Running setup will give you the following wizard.



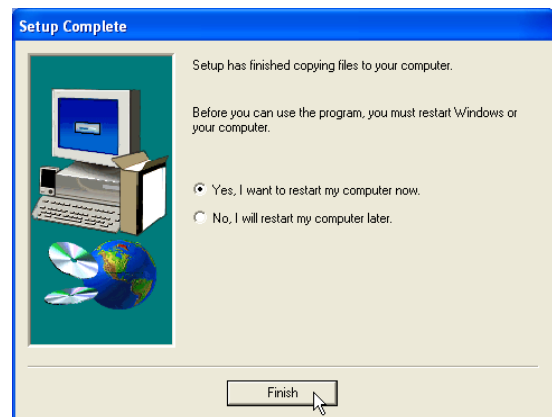
1. On the “Welcome” screen, click **Next** after reading the message.



2. On the “License Agreement” screen, click **Yes** after reading.



3. On the “Select Components” screen, click **Express**.

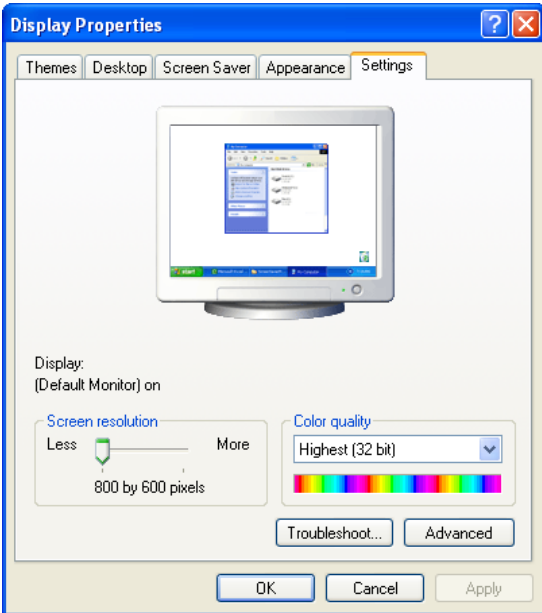


4. When setup is complete, select “Yes...” and click **Finish** in order to restart Windows with a higher screen resolution*.

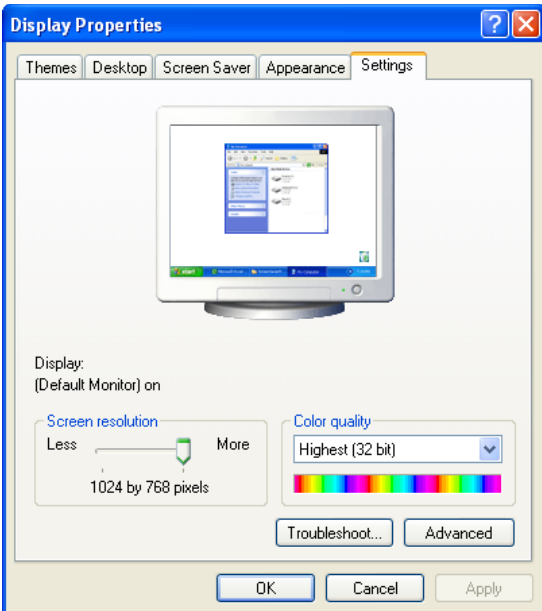
*** Windows may have already provided the highest screen resolution support for this graphics controller.**

VGA Driver Setup (Cont.)

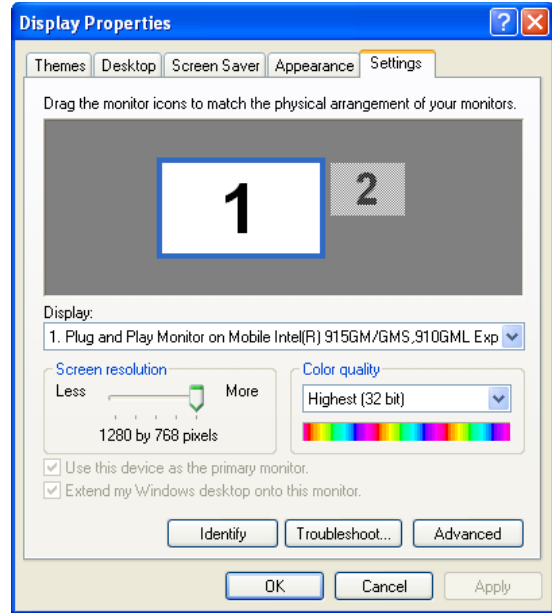
Make screen resolution settings in "Display Properties". Higher resolutions may be available but panning will occur if you surpass the display panel's specifications.



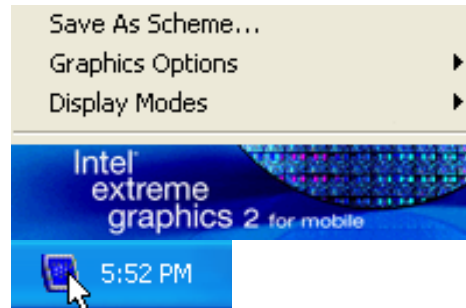
Before VGA drivers are installed, graphics functions are limited.



Windows XP does support 1024 x 768 without additional drivers for this display controller.



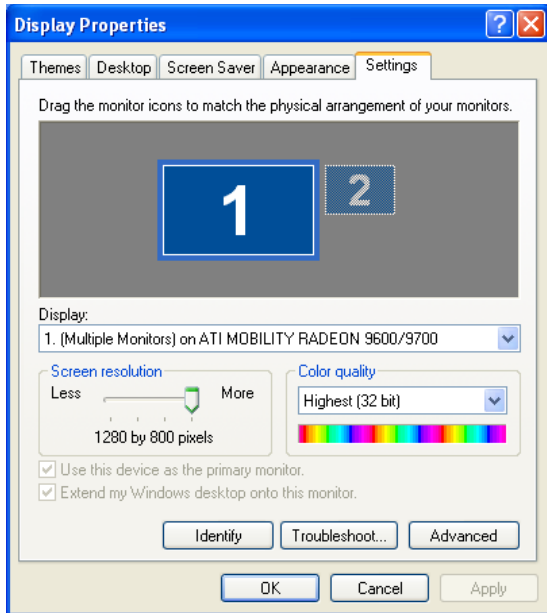
After VGA driver installation (Model 1)



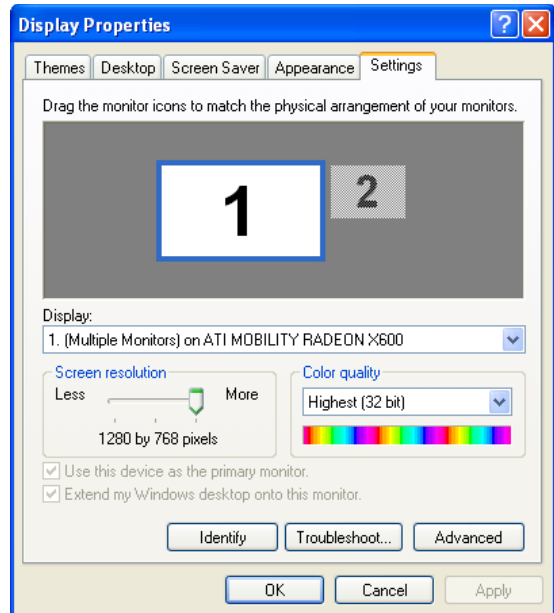
Left or Right click - for shortcuts to display settings.

VGA Driver Setup (Cont.)

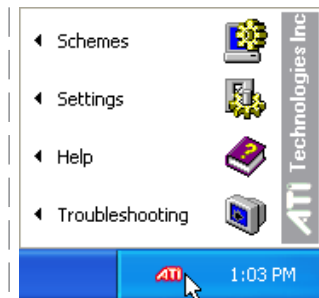
Make screen resolution settings in "Display Properties". Higher resolutions may be available but panning will occur if you surpass the display panel's specifications.



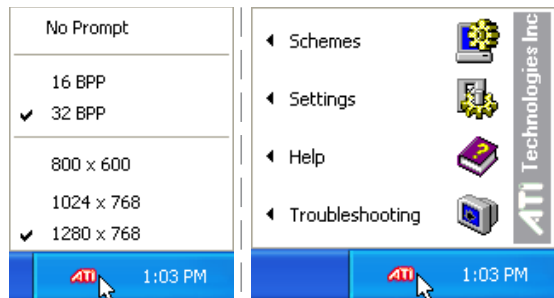
After VGA driver installation (Model 2)



After VGA driver installation (Model 3)



Left click - for quick resolution settings. **Right click** - for shortcuts to display settings.



Left click - for quick resolution settings. **Right click** - for shortcuts to display settings.

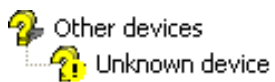


ATK0100 Driver (ACPI)

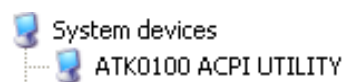
(Required driver)

Topics Covered:
ATK0100 Driver Setup

Before



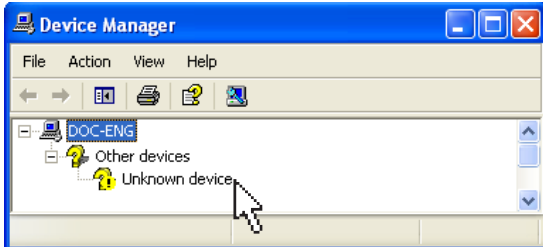
After



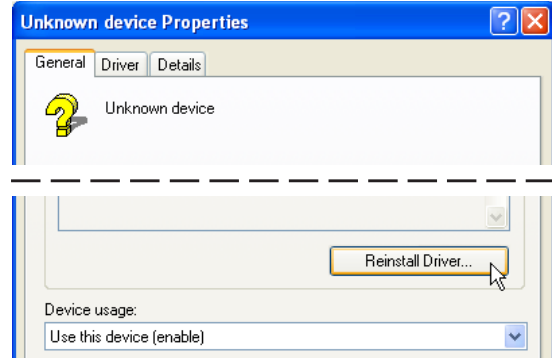
(Screens and drivers may vary depending on your model and operating system.)

ATK0100 Driver Setup

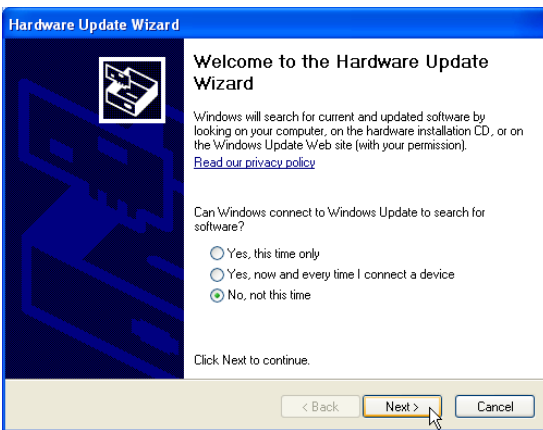
This driver requires that you manually install it from Device Manager. No software operation is required.



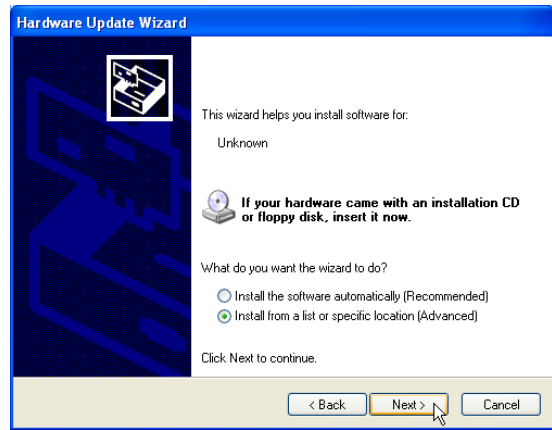
1. Double click **Unknown device**.



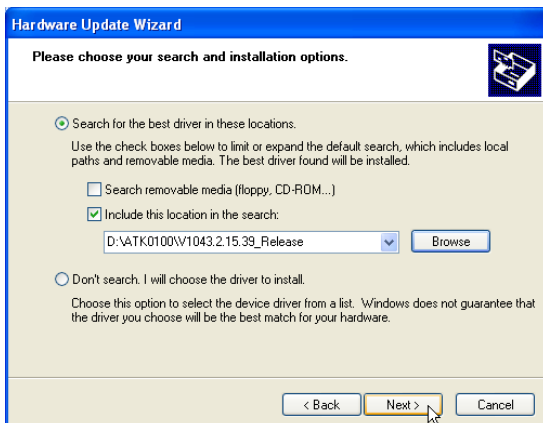
2. Click **Reinstall Driver**.



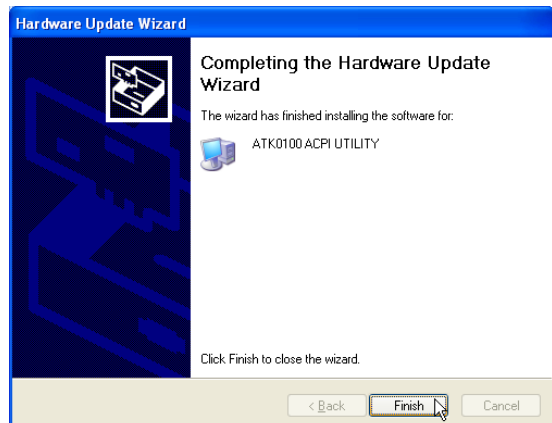
3. Select "No..." and click **Next**.



4. Select "Install from..." and click **Next**.



5. Browse to your operating system folder in the "ATK0100" folder and click **Next**.



6. Click **Finish** when setup is complete.
7. Click **Close** to close the properties window.



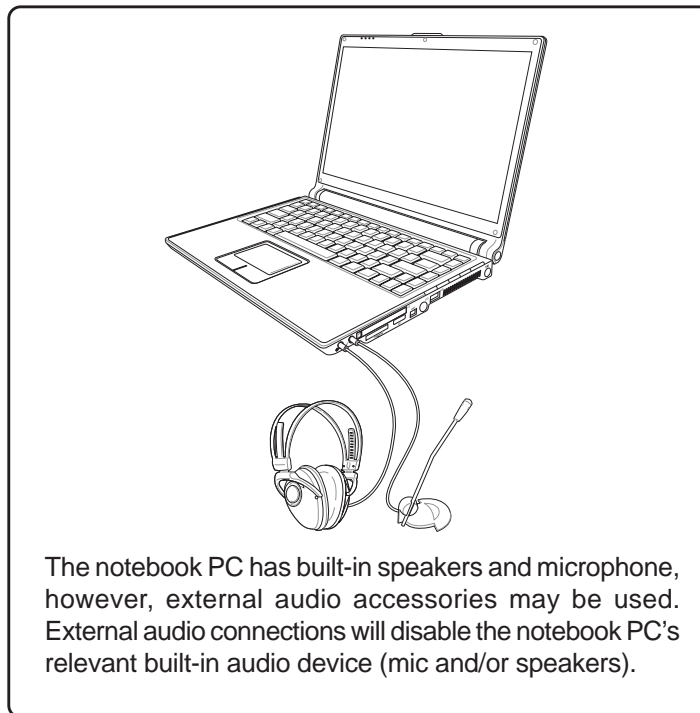
Audio

(Required driver)

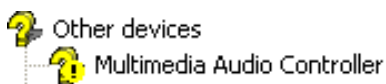
Topics Covered:

Audio Driver Setup

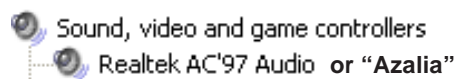
Using CD Player in Windows



Before



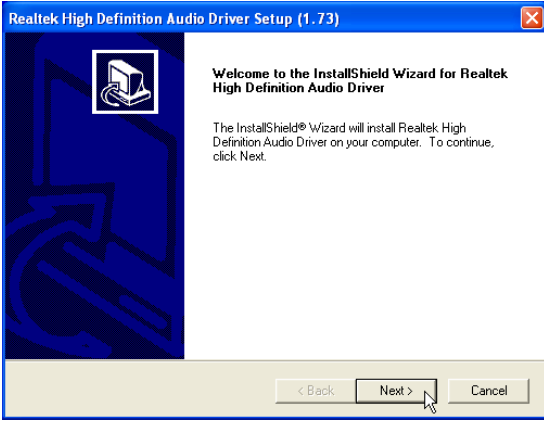
After



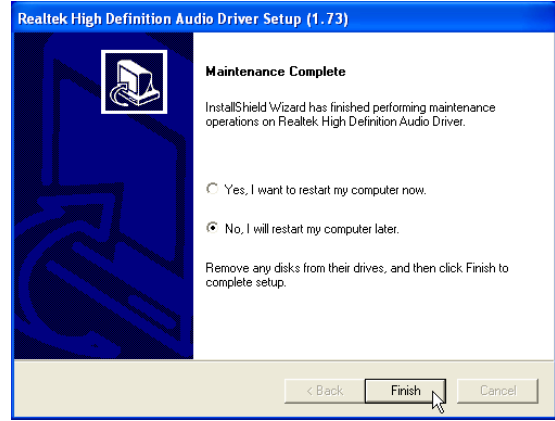
(Screens and drivers may vary depending on your model and operating system.)

Audio Driver Setup

Running setup will give you the following wizard:

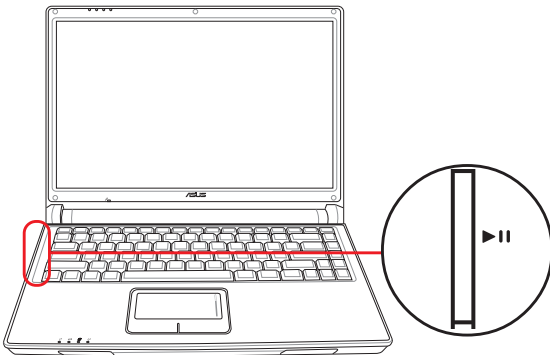


1. Click **Next** to begin setup.



2. When setup is complete, select **No...** and click **Finish** in order to install other items.

Using CD player in Windows



Pressing the play button on the Notebook's CD player will launch Windows Media Player and begin playing the last loaded audio file.



Windows Media player and audio drivers must be setup correctly before this function will work.

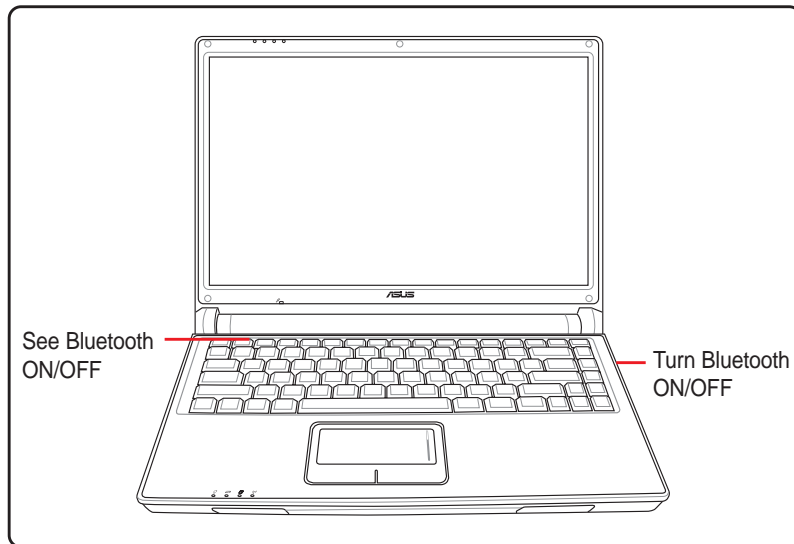
- ⏪ Previous file in play list
- Stop playing file
- ▶ Play / Pause file
- ⏩ Next file in play list



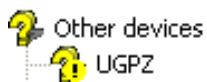
Bluetooth

(Required driver)

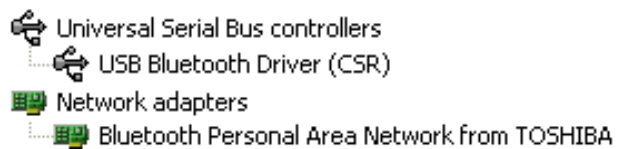
Topics Covered:
Bluetooth Driver Setup
Turning Bluetooth ON or OFF



Before



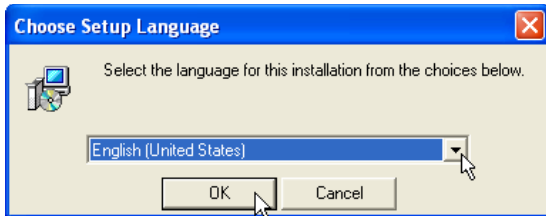
After



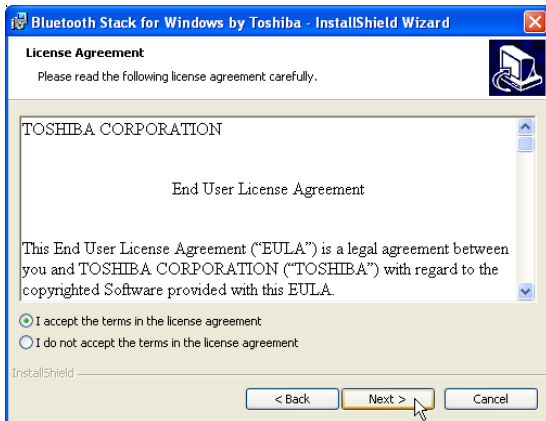
(Screens and drivers may vary depending on your model and operating system.)

Bluetooth Driver Setup

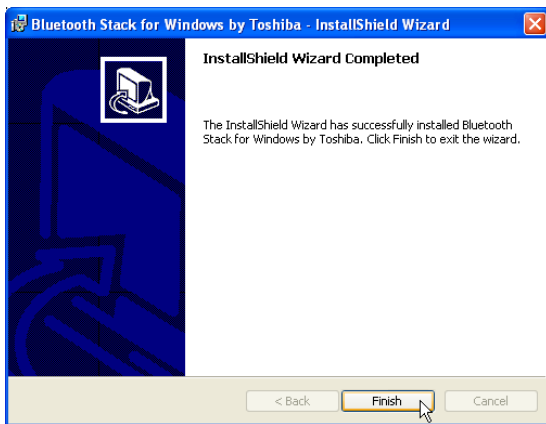
Running setup will give you the following wizard:



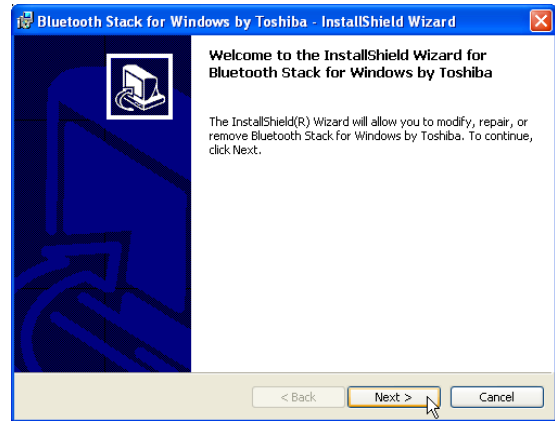
1. Select a language from the pull down menu.



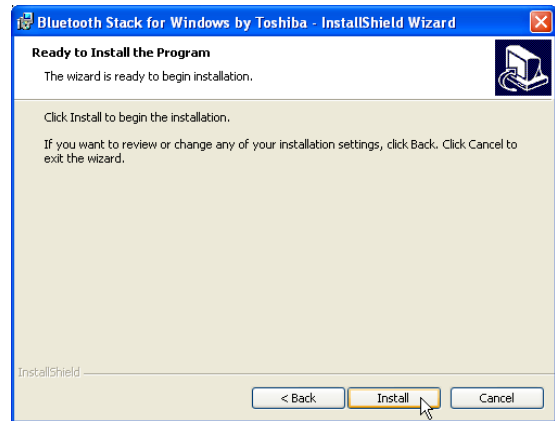
3. Click **Next** after reading the "License Agreement".



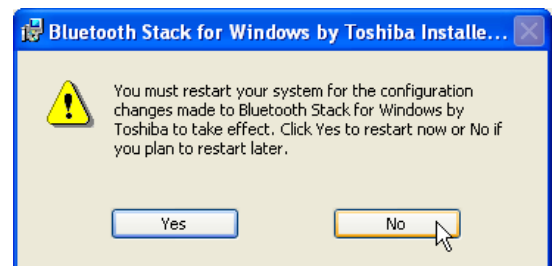
5. Click **Finish** when setup is complete.



2. Click **Next** on the "Welcome" screen.

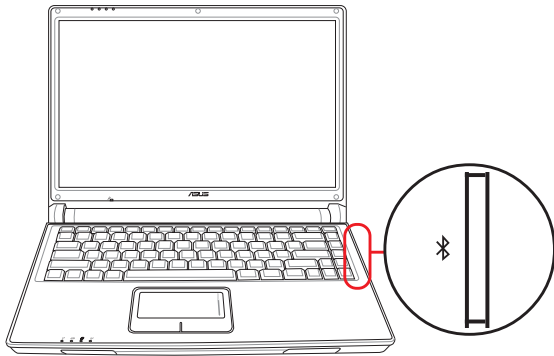


4. Click **Install** when the wizard is ready to install the drivers.



6. Click **No...** in order to install other items.

Turning Bluetooth ON or OFF



Press the Bluetooth button on the Notebook's instant launch keys to turn the built-in Bluetooth ON or OFF.



Bluetooth drivers must be setup correctly before this function will work.

INF Update (Intel)

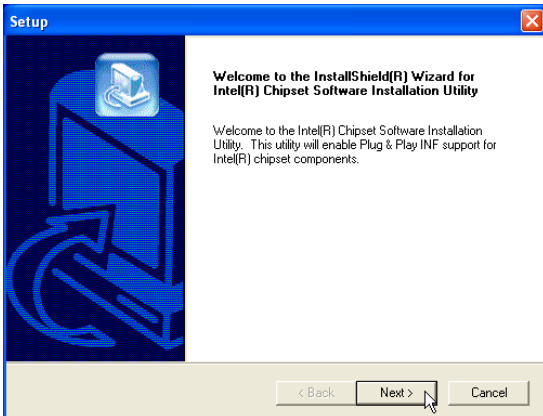
(Required driver)

Topics Covered:
INF Update Driver Setup

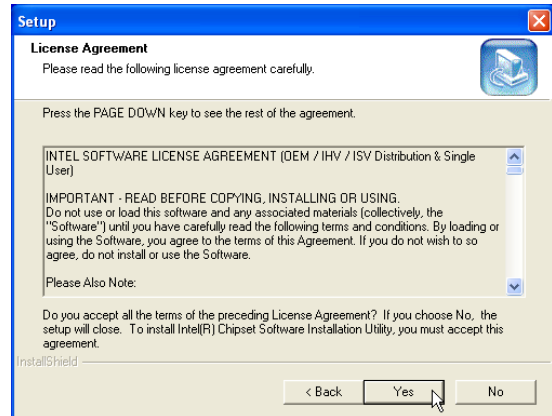
(Screens and drivers may vary depending on your model and operating system.)

INF Update Driver Setup

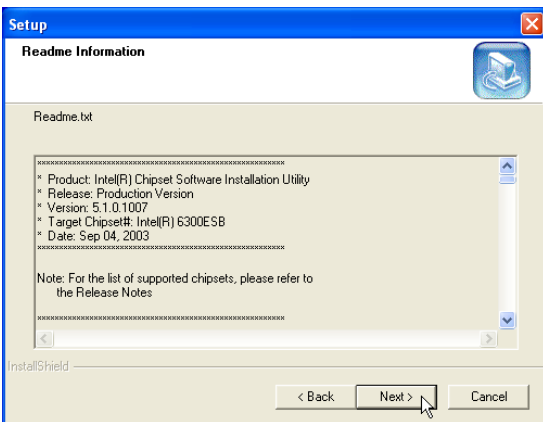
Running setup will give you the following wizard:



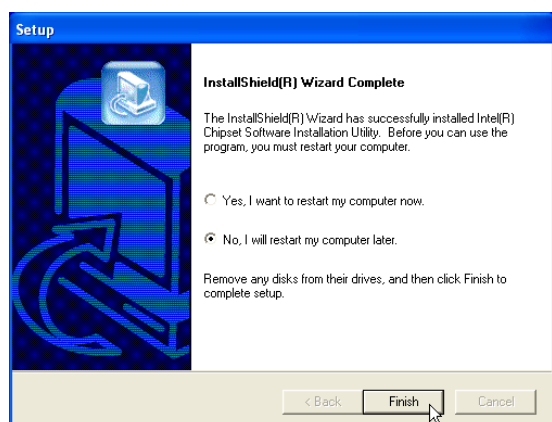
1. On the "Welcome" screen, click **Next** after confirming this is what you want to setup.



2. On the "License Agreement" screen, click **Next** after reading.



3. On the "Readme" screen, click **Next** after reading.



4. Setup is now complete, select **"No..."** and click **Finish** in order to install other items.



INTEL Calexico (Wireless LAN)

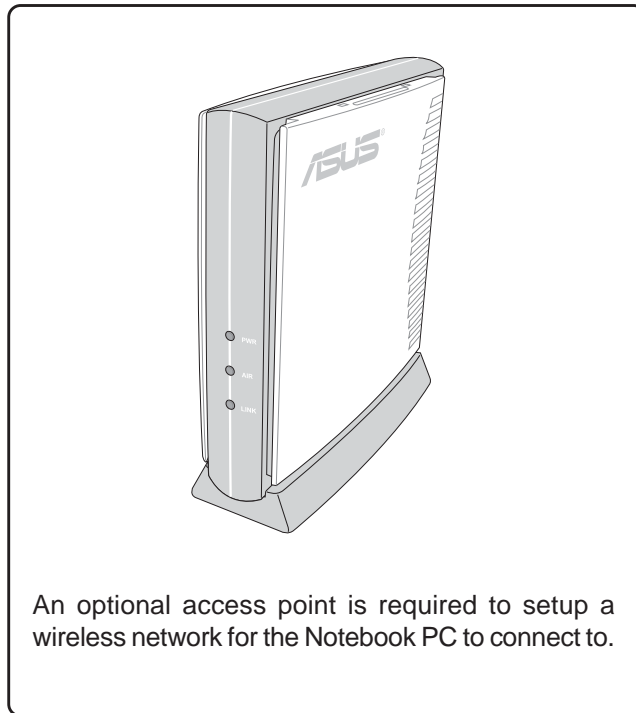
(Required driver on selected models)

Topics Covered:

Wireless LAN Driver Setup

Wireless LAN Utility Setup

Wireless LAN Utility Quick Start



Before

- Other devices
- Network Controller

After

- Network adapters
- Intel(R) PRO/Wireless 2200BG Network Connection or "ABG"

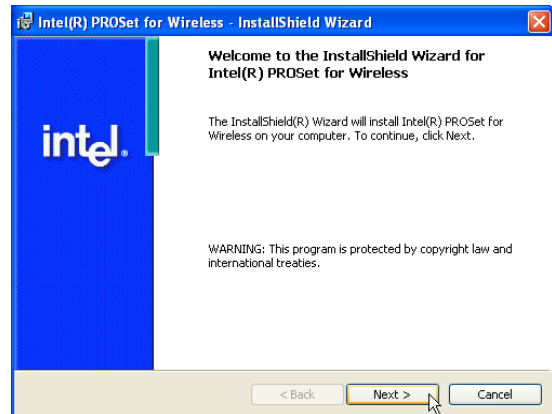
(Screens and drivers may vary depending on your model and operating system.)

Wireless LAN Driver Setup - Calexico2 (ABG)

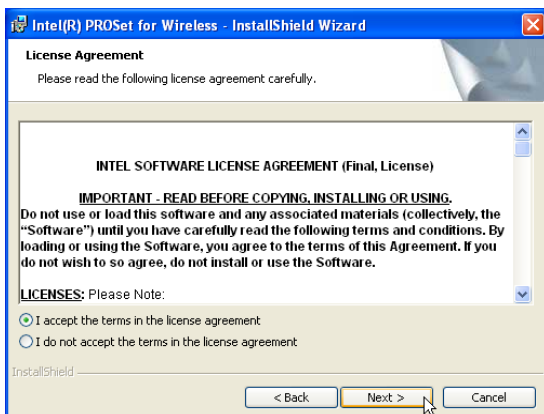
Driver depends on model. Running setup will give you the following wizard:



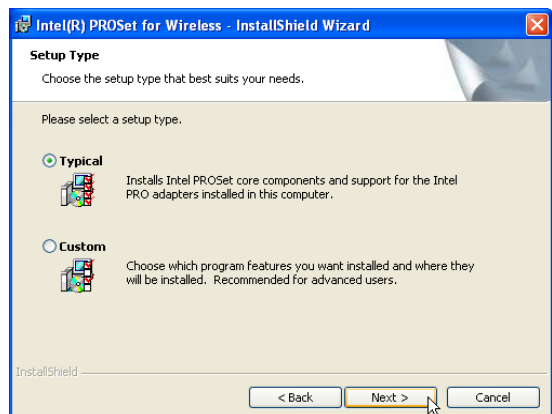
1. On the “Autorun” screen click **Install Software**.



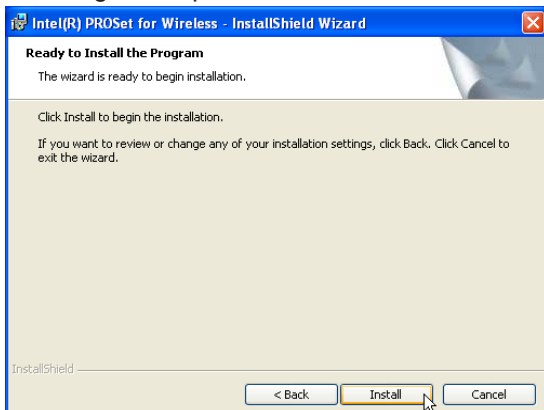
2. On the “Welcome” screen click **Next** after reading the message.



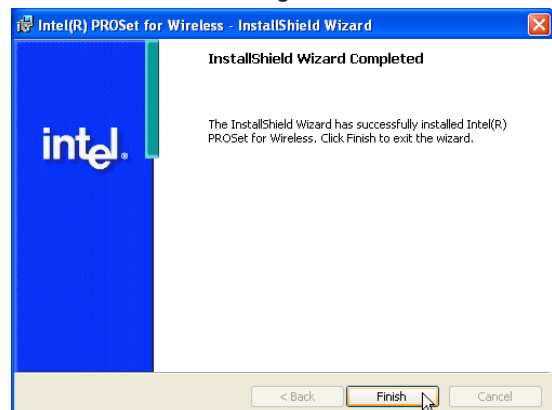
3. On the “Agreement” screen, click **Next** after selecting “I accept...”



4. On the “Select Components” screen, click **Next** to use the default settings.



5. On the “Ready” screen click **Install** to begin the installation.



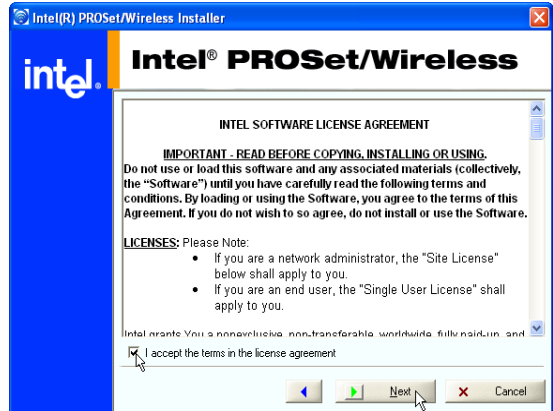
6. On the “Wizard Complete” screen, click **Finish** to exit the installation wizard.

Wireless LAN Driver Setup - Calexico2 (2200BG)

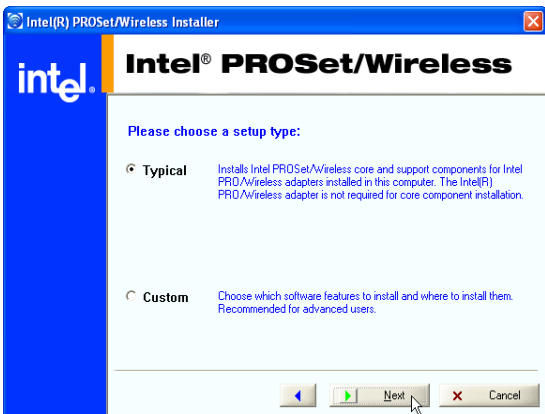
Driver depends on model. Running setup will give you the following wizard:



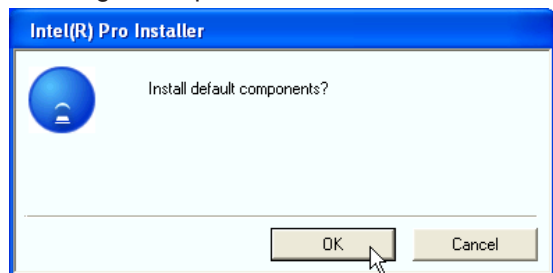
1. On the "Autorun" screen click **Install Software**.



2. On the "Agreement" screen, click **Next** after selecting "I accept..."



3. On the "Setup Type" screen, click **Next** to use the default settings.



4. On the "Install default components" screen, click **OK** to use the default settings.



5. Wait while components are installed.




6. When complete, click **Ok** to exit the installer.

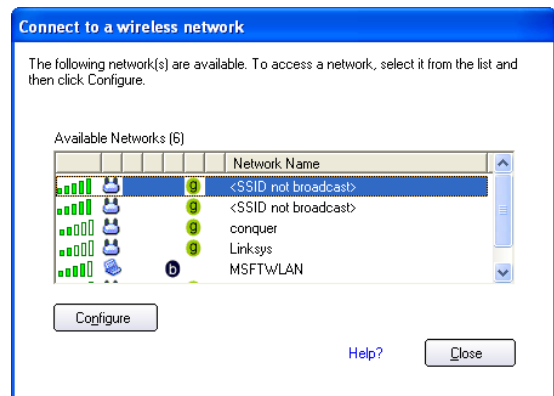
Wireless LAN Utility Introduction

After installing the Wireless driver and utility, the utility will automatically start with Windows. If you need to start it manually, you can launch the utility using the desktop icon or through Windows **start**. You will need to make some wireless LAN settings before being able to use your wireless connection.

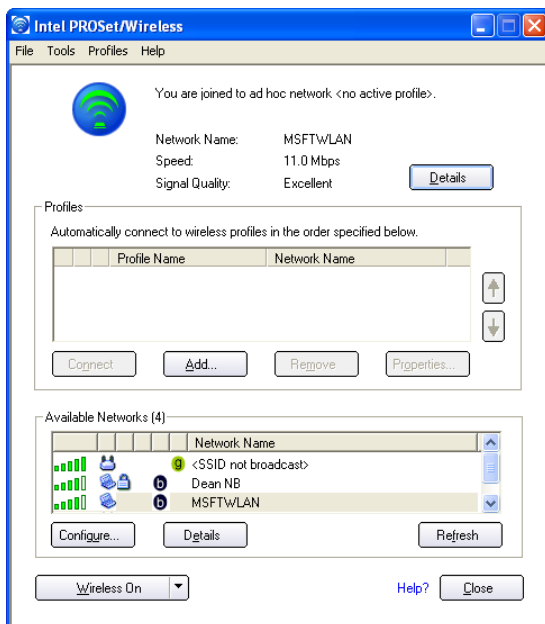


After installation, you will have several options available through the icon on the task bar.

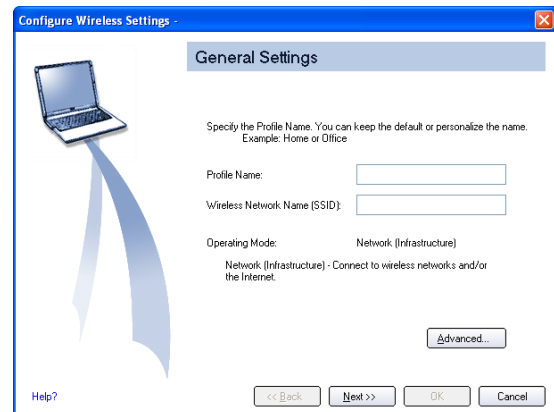
 Green icon indicates connected, yellow indicates disconnected mode, and white indicates that the WLAN is OFF.



The wireless LAN utility will automatically search for available networks if not connected.



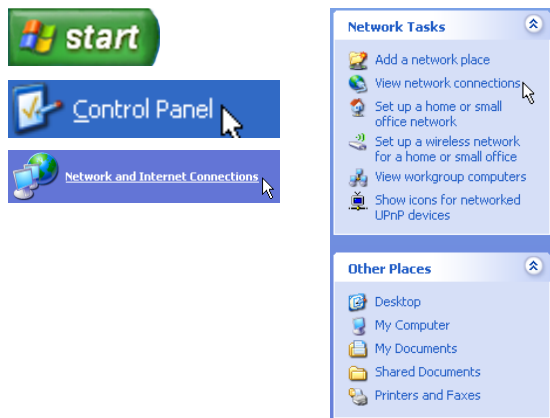
Double click the taskbar icon to bring up the connection status window. Click **Details** to view available access point information.



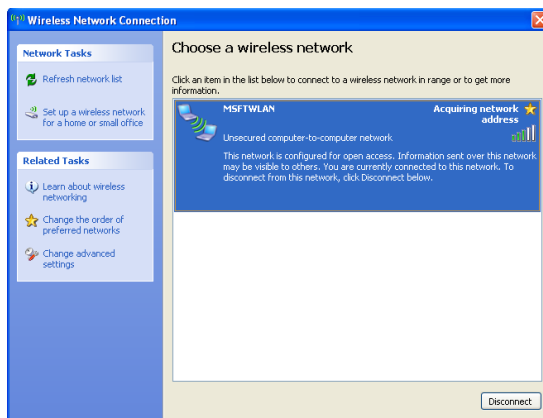
Configure - Make a new profile to save specific settings for use in different WLAN networks.

Windows Wireless Settings

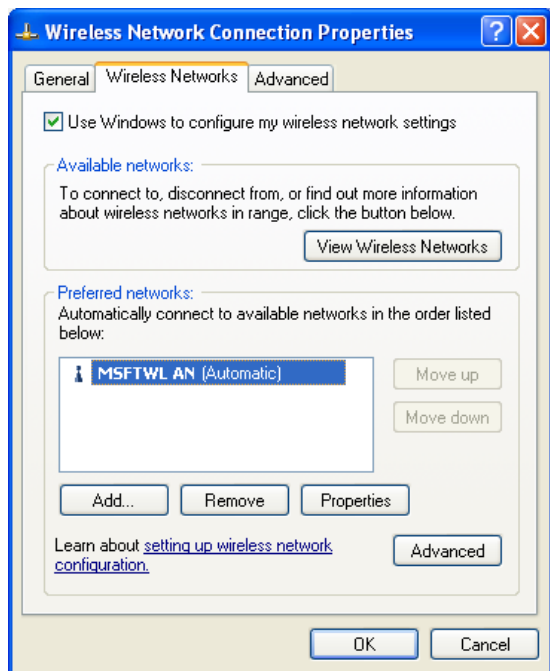
Windows provides a wireless utility to configure your wireless network controller.



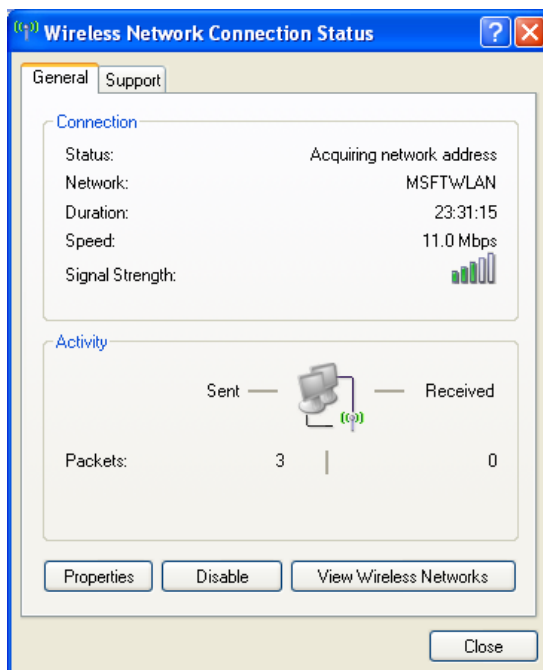
From “My Network Places”, you can view network connections.



Clicking the taskbar icon will bring up window displaying available networks. (Wireless networks can be hidden for security purposes.)



You can manually add wireless networks from the properties page.



Connection status will show the connected network name and the signal strength.



ASUS Wireless LAN

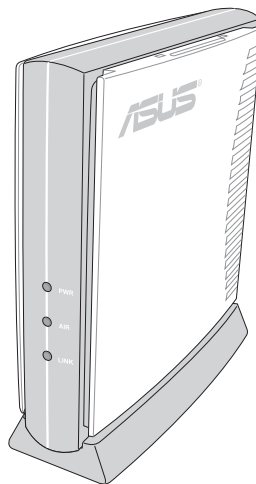
(Required driver on selected models)

Topics Covered:

ASUS WLAN Driver Setup

ASUS WLAN Utility Setup

ASUS WLAN Utility Quick Start

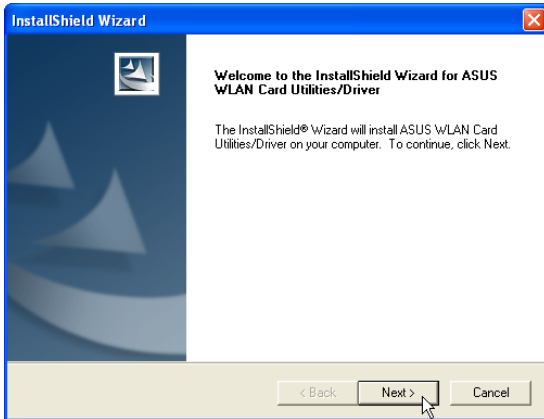


An optional access point is required to setup a wireless network for the Notebook PC to connect to.

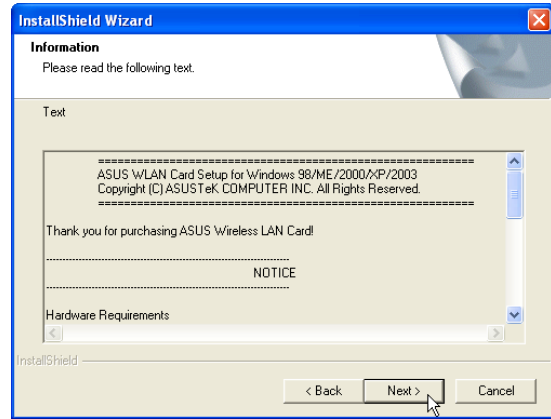
Screens will vary depending on your operating system but the contents should be the same.

ASUS WLAN Driver Setup

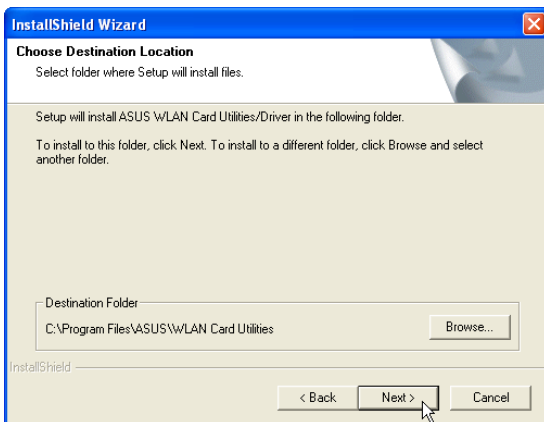
Running setup will give you the following wizard:



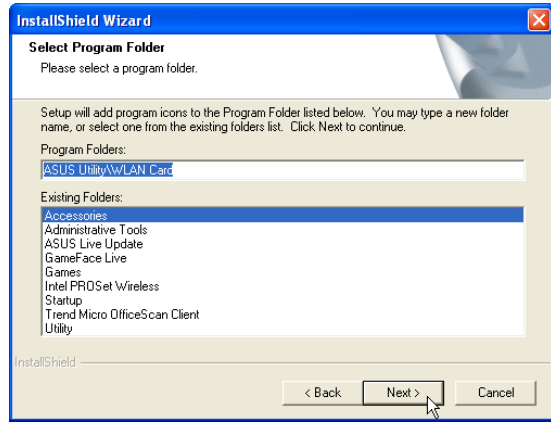
1. Click **Next** after reading the “Welcome” screen.



2. Click **Next** after reading the “Information” screen.



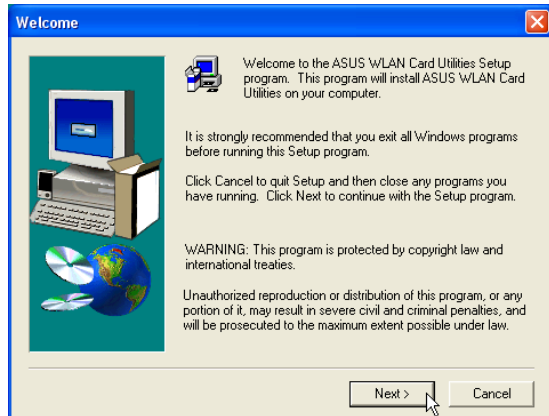
3. On the “Select Program Folder” screen, click **Next** to continue or you may first change the folder.



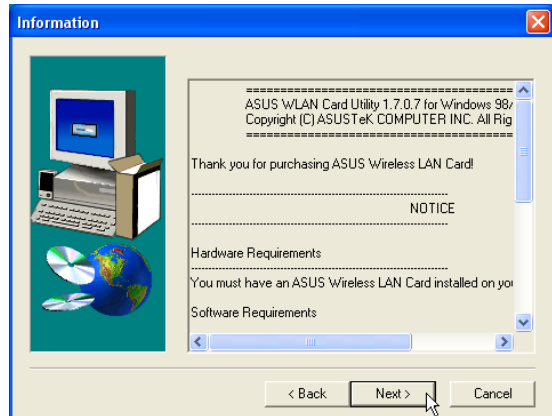
4. Setup is now complete, select “No...” and click **Finish** in order to install other items.

ASUS WLAN Utility Setup

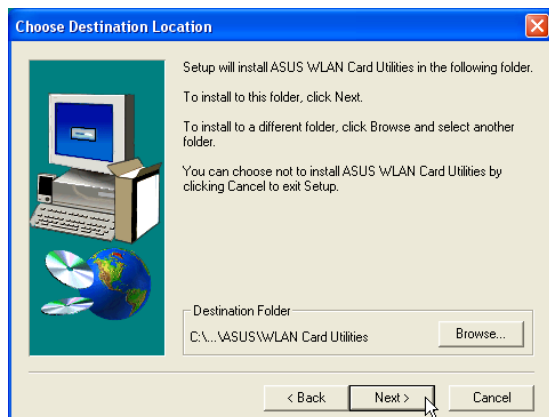
After installing driver, you need to install the wireless utility.



1. Click **Next** after reading the “Welcome” screen.



2. Click **Next** after reading the “Information” screen.

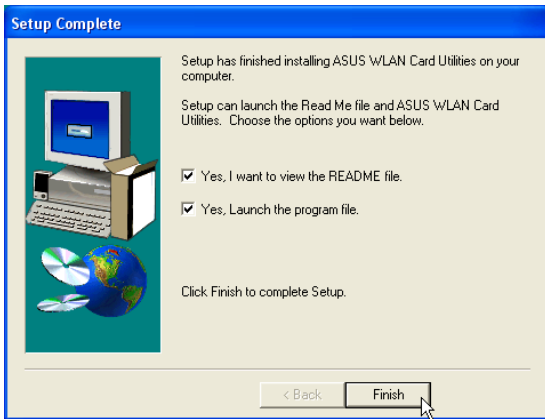


3. On the “Choose Destination Location” screen, click **Next** to continue or you may first change the destination folder.

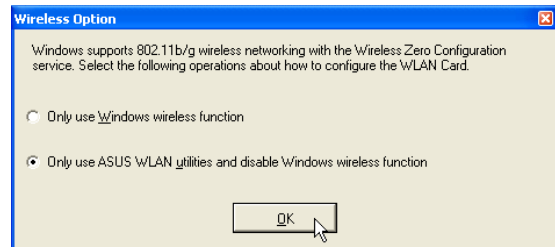


4. On the “Select Program Folder” screen, click **Next** to continue or enter a different folder name.

ASUS WLAN Utility Setup (Cont.)



5. Click **Finish** on the “Setup Complete” screen.



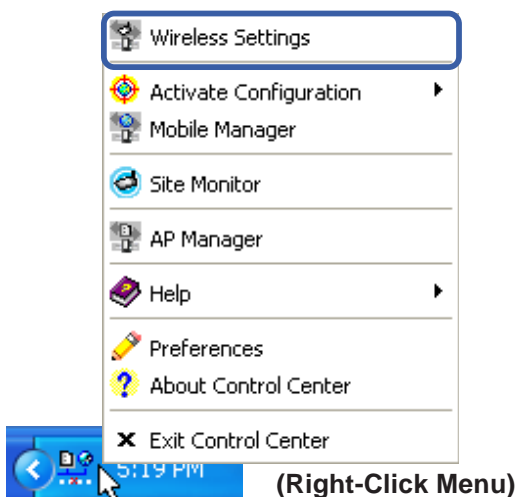
6. Select to use “...ASUS Utilities...” for added features while using the wireless LAN device.

ASUS WLAN Utility Quick Start

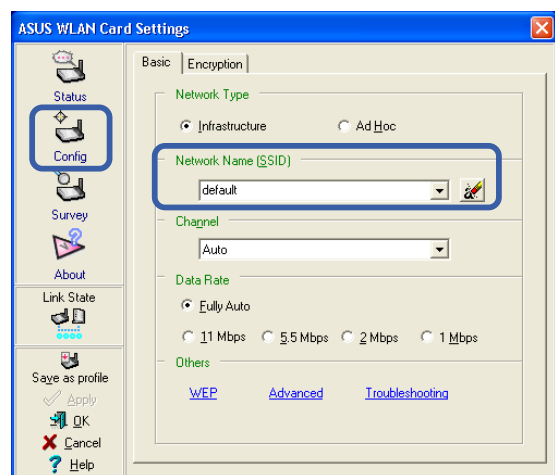
After installing the ASUS WLAN driver and utility, the utility will automatically start with Windows. If you need to start it manually, you can launch the utility using the desktop icon or through Windows **start**. You will need to make some wireless LAN settings before being able to use your wireless connection.



ASUS WLAN
Control Center

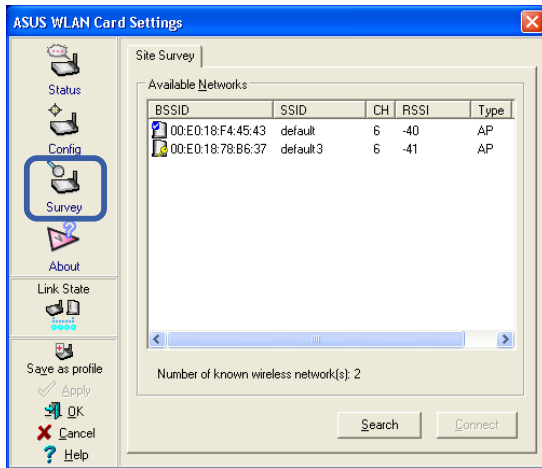


1. Right-click the ASUS WLAN icon and select “Wireless Settings”

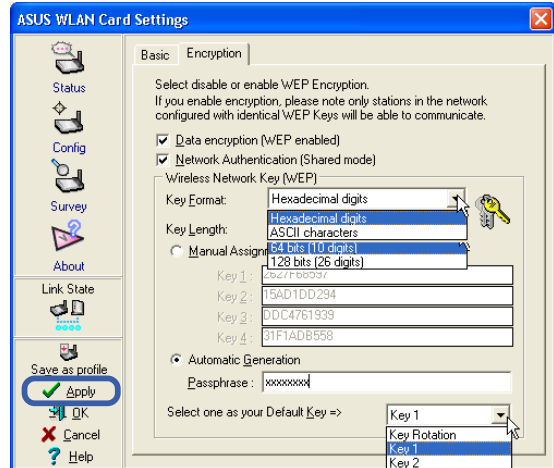


2. Set the Network Name (SSID) to the same name as the SSID set in your wireless access point.

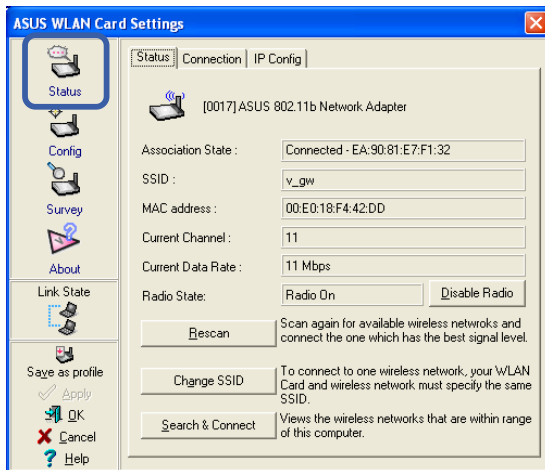
ASUS WLAN Utility Quick Start (Cont.)



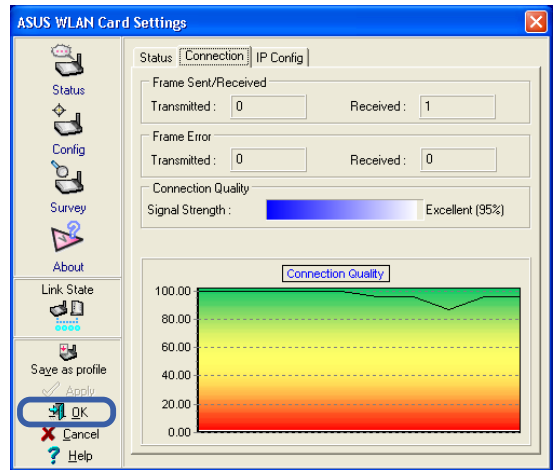
3. Use "Site Survey" if you don't know the name of your access point(s).



4. Encryption settings must also match those set in the access point. Talk with your network administrator if necessary. Click **Apply** to save your settings



5. Check the "Status" page to see the "Association State". It should show "Connected - xx:xx:xx:xx:xx:xx".



6. You can also see the connection quality on the "Connection" page. Click **OK** to exit the utility.

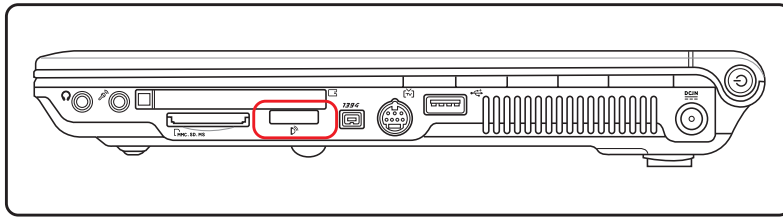


Wireless Link

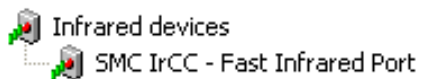
IR (Infrared)

(Required driver)

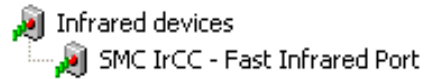
Topics Covered:
IR Driver Setup



Before (already supported by Windows XP)



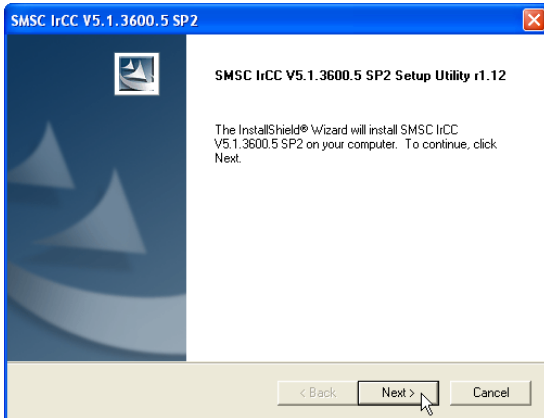
After



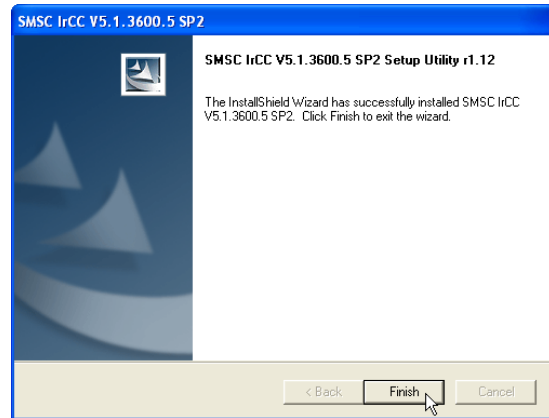
(Screens and drivers may vary depending on your model and operating system.)

IR (Infrared) Driver Setup

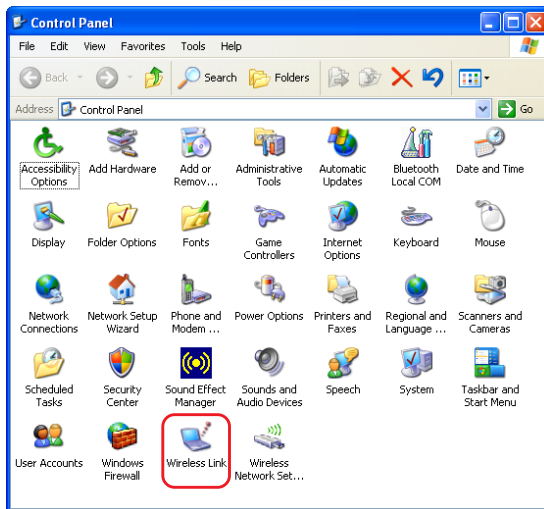
Running setup will give you the following wizard:



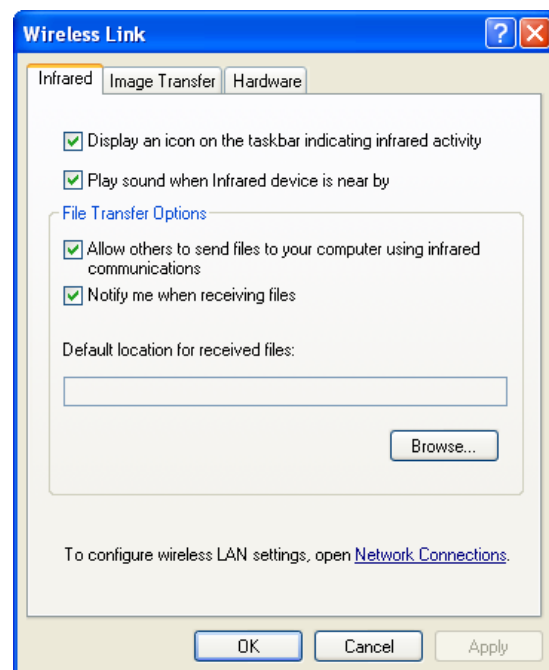
1. On the “Welcome” screen, click **Next** after confirming this is what you want to setup.



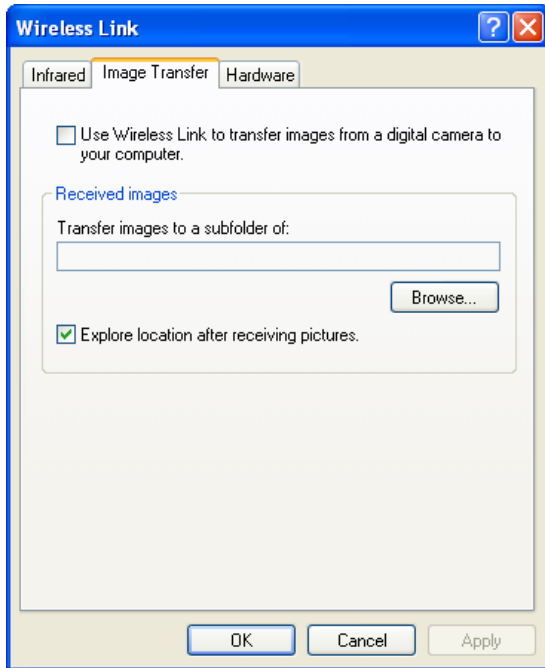
2. Setup is now complete, click **Finish** to exit.



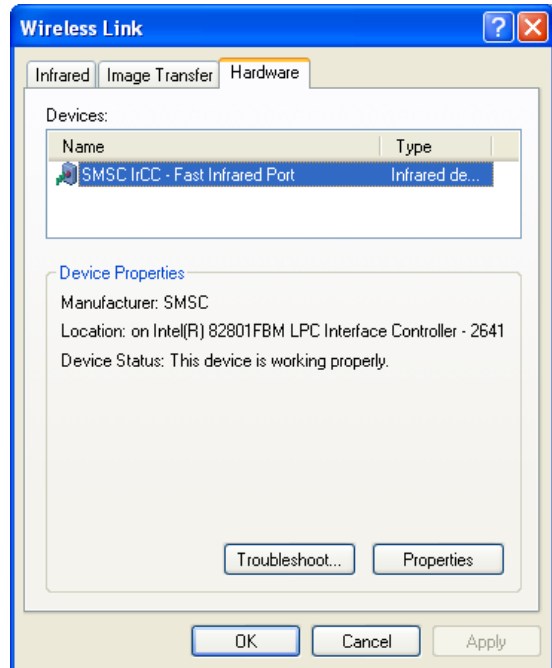
1. Run **Wireless Link** from the “Control Panel” to make settings to the infrared port.



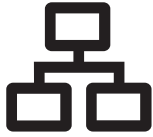
2. Select the “infrared” options you want with a check mark.



3. Select the “image transfer” options you want with a check mark.



4. See “hardware” information here.



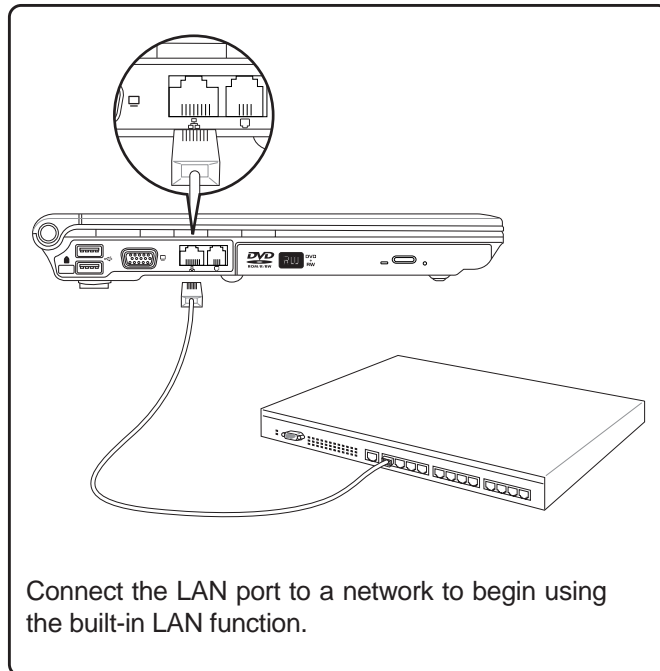
LAN

(Required driver)

Topics Covered:

LAN Driver Setup

Configuring your LAN



Before

- Other devices
- Network Controller

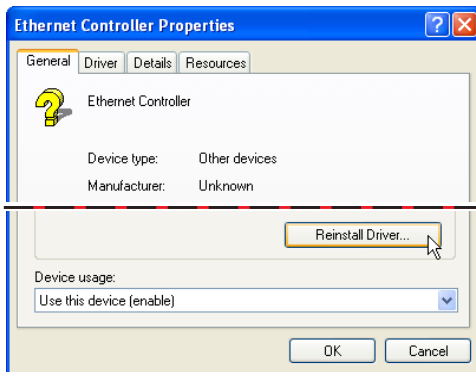
After

- Network adapters
- Marvell Yukon Gigabit Ethernet 10/100/1000Base-T Adapter, Copper RJ-45

(Screens and drivers may vary depending on your model and operating system.)

LAN Driver Setup

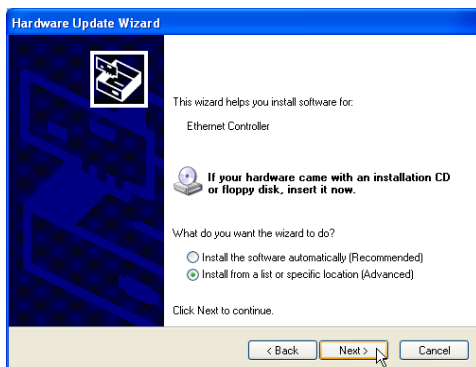
You will see a “Found New Hardware Wizard” if your device requires setup. If not your driver may already be installed by Windows. If your device is not working, you can manually install the driver as follows:



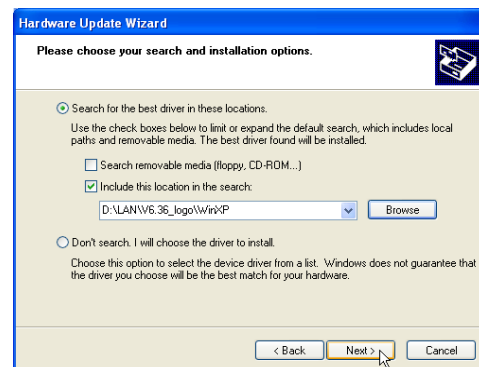
1. On the “Ethernet Controller Properties” screen, click **Reinstall Driver**.



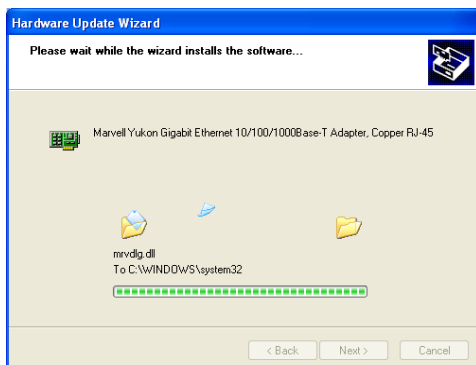
2. Select “No...” and click **Next** to install the driver from the provided CD.



3. Select “Install from...” and click **Next**.



4. Click **Browse** to find the LAN driver. (Path will vary by model and region.)



5. Wait while files are copied to your system.



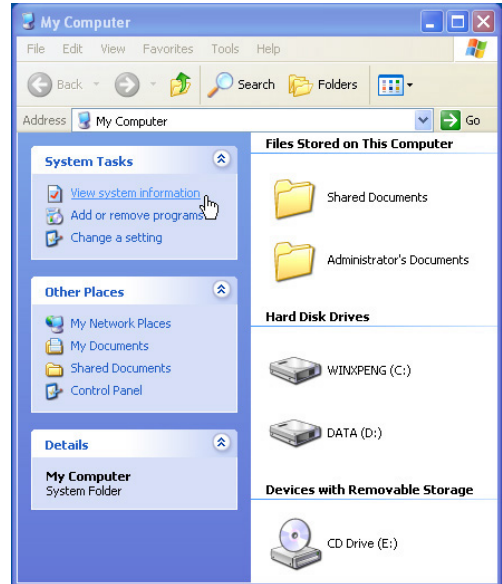
6. When complete, click **Finish** to exit the installation wizard.
7. Click **Close** to exit the properties window.

Configuring your LAN

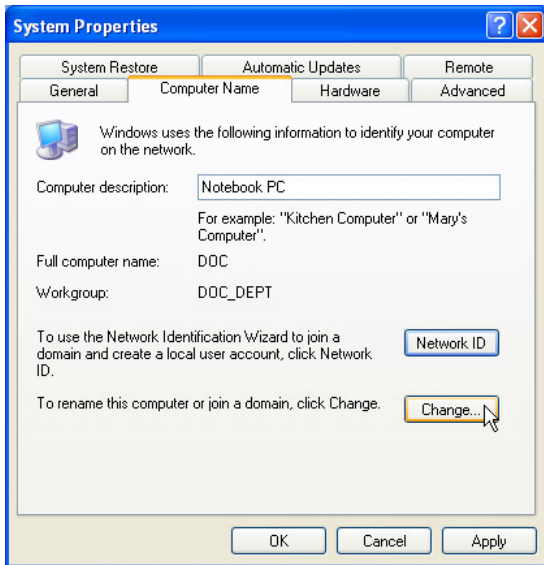
Joining a Domain or Workgroup (Windows XP)



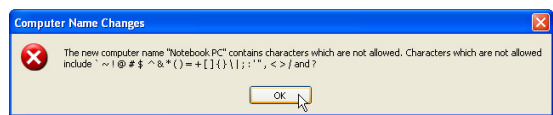
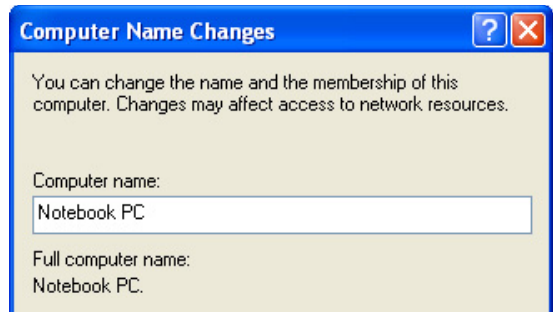
(1) Click **Start** and **My Computer**.



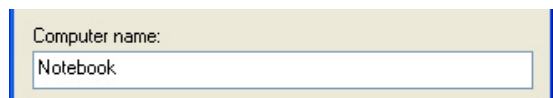
(2) Click **View system information**.



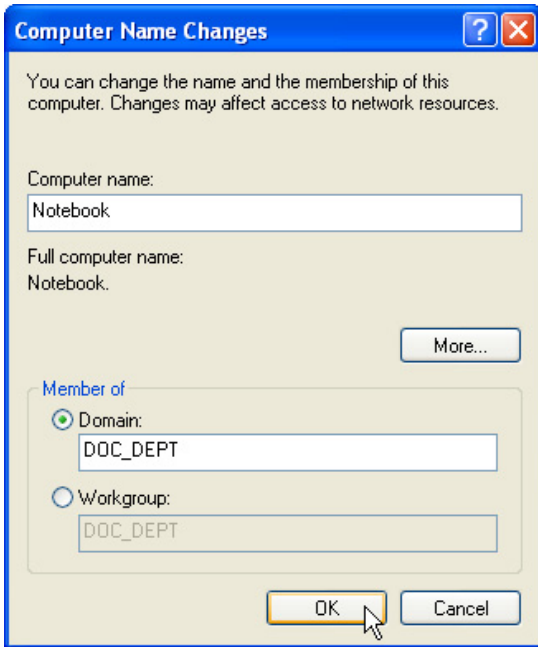
(3) Your computer name, workgroup or domain information is shown here. Click **Change** to view options.



You cannot use spaces or symbols in the computer name. In the example here, a warning is given when trying to use "Notebook PC". You can use the single word "Notebook" instead.

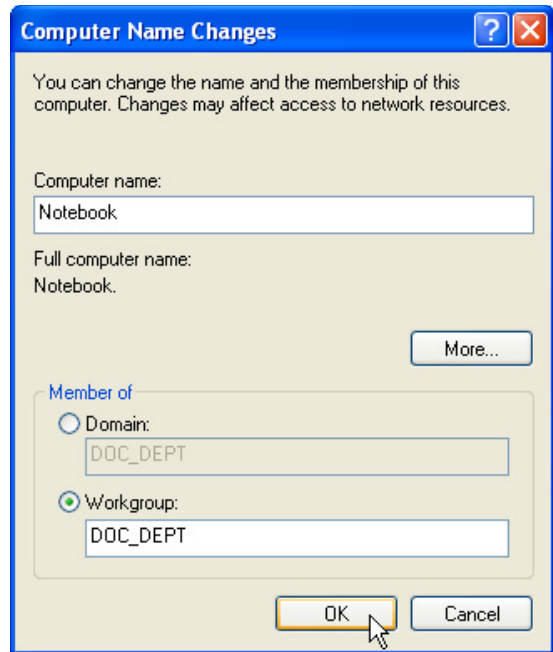


Joining a Domain or Workgroup (Cont.)



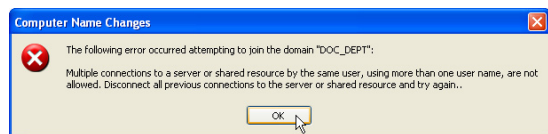
(4a) Domain:

The primary server in the domain will perform routing functions and security verifications for your computer. Select **Domain** and enter an existing domain you wish to join. **NOTE:** After clicking "OK", you will be asked for the Domain Controller's Administrator password to join the domain in Windows XP.



(4b) Workgroup:

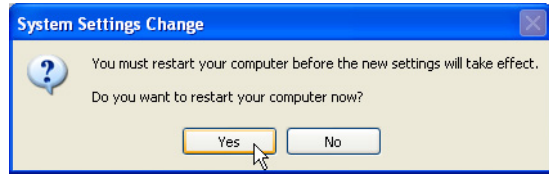
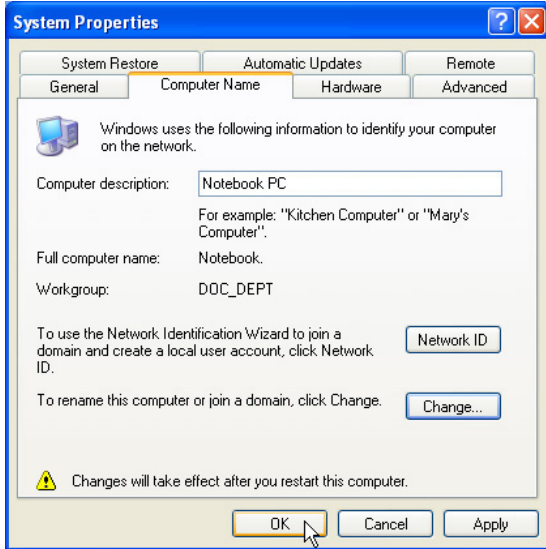
If your network does not have a domain or you are not authorized to join a domain, select **Workgroup** and type in an existing name or create your own (by typing an unused workgroup name)



Administrator Name or Password not accepted:

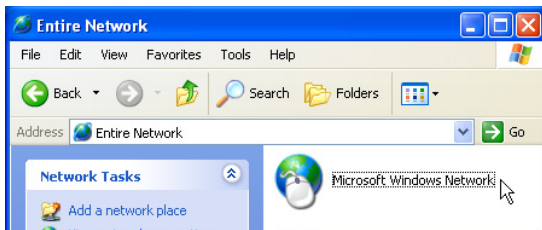
You cannot login with the Administrator name and use one password, then use the Administrator name with another password to add to a domain. You must login using another name. See Windows documentation to "Add New User" from User Accounts in the Control Panel.

Joining a Domain or Workgroup (Cont.)



(5) After you restart your computer, you should see some contents through Entire Network.

Viewing Your Network



(6) Clicking on "My Network Places" will display networks which you have installed protocols for. Clicking a network protocol such as "MS Windows Network" will display all the servers available under that protocol.

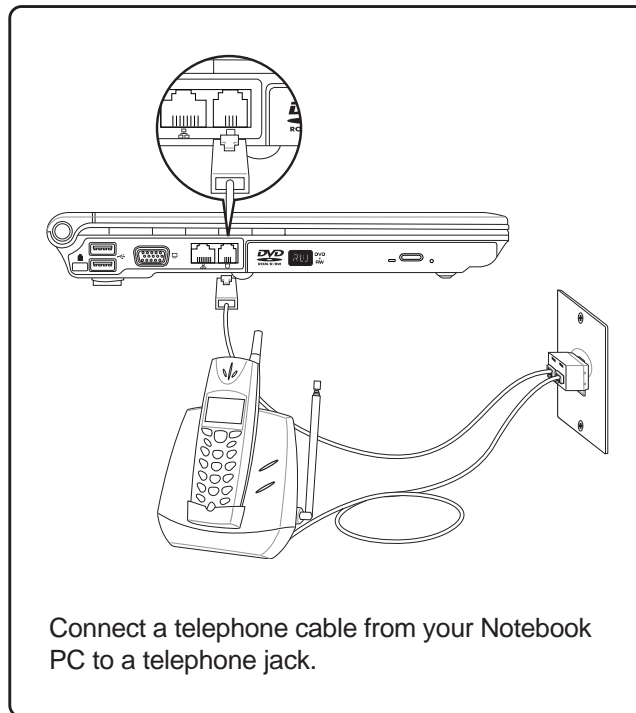




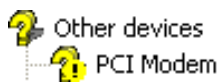
Modem

(Required driver)

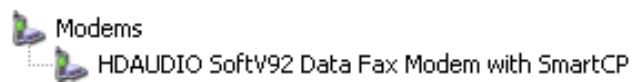
Topics Covered:
Modem Driver Setup
Modem Configuration



Before



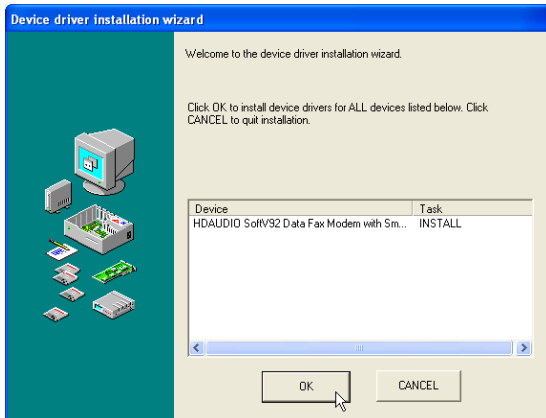
After



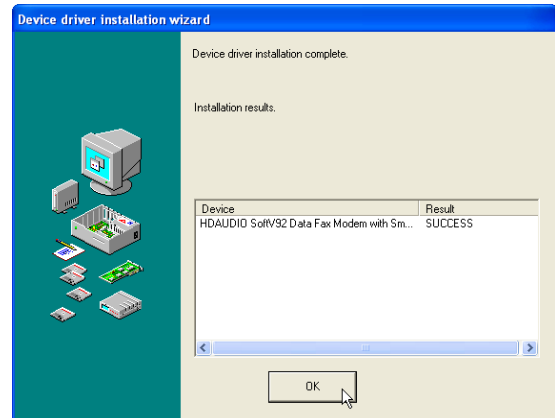
(Screens and drivers may vary depending on your model and operating system.)

Modem Driver Setup

Running setup will give you the following wizard:



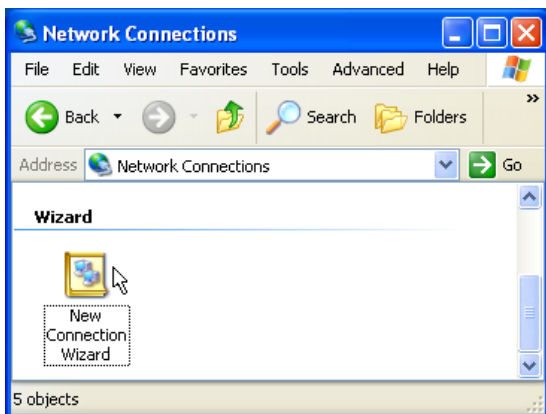
1. On the “Welcome” screen, click **Next** after reading.



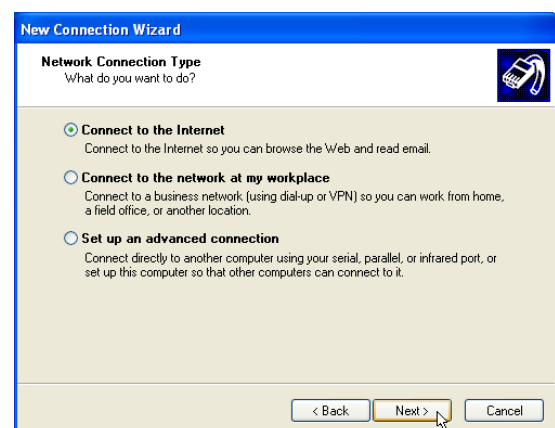
2. Setup is now complete, click **OK** to exit the wizard.

Modem Configuration

Use **New Connection Wizard** in “Network Connections” to start the configuration wizard to your modem. The New Connection Wizard also allows configuration for other communication devices (if available) such as LAN, ISDN, ADSL, or Bluetooth.

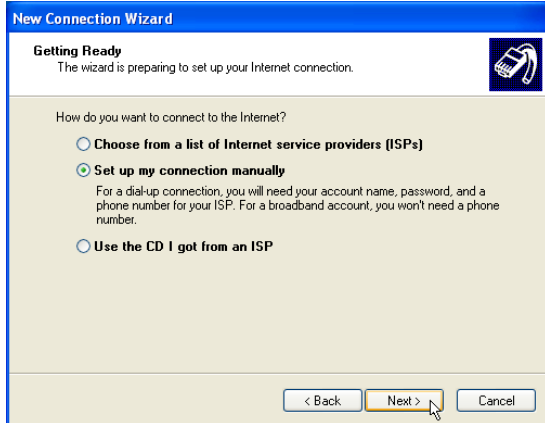


1. Double-click **New Connection Wizard** in Network Connections

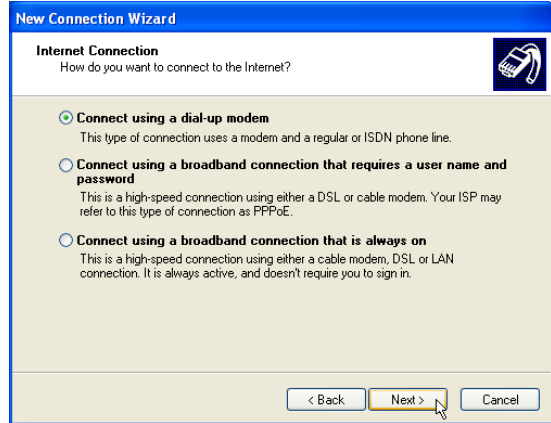


2. Select “Connect to the Internet” and click **Next**.

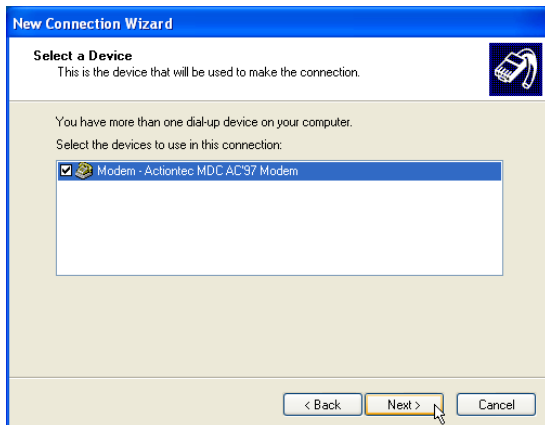
Modem Configuration (Cont.)



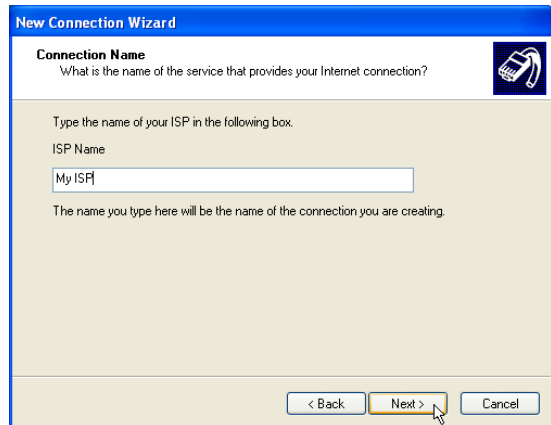
3. Select "Set up my connection manually" and click **Next**.



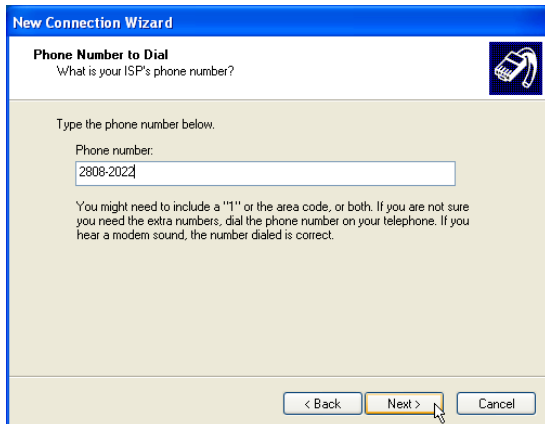
4. Select "Connect using a dialup modem" and click **Next**.



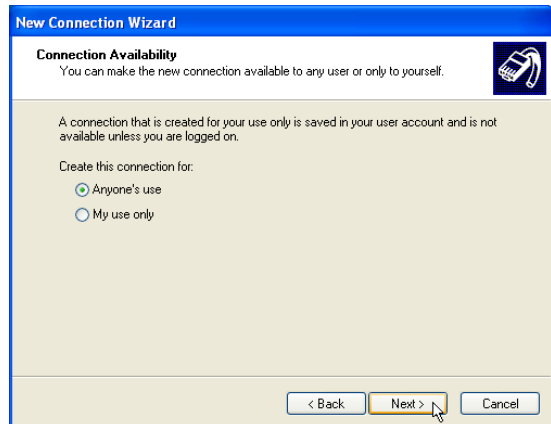
5. Select your modem and click **Next**.



6. Enter any name to represent your ISP.



7. Enter the dial up number for your ISP.



8. Selection one of the security preferences and click **Next**.

Modem Configuration (Cont.)

New Connection Wizard

Internet Account Information
You will need an account name and password to sign in to your Internet account.

Type an ISP account name and password, then write down this information and store it in a safe place. (If you have forgotten an existing account name or password, contact your ISP.)

User name:

Password:

Confirm password:

Use this account name and password when anyone connects to the Internet from this computer

Make this the default Internet connection

Turn on Internet Connection Firewall for this connection

< Back Next > Cancel

9. Enter your ISP account name and password and click **Next**.

New Connection Wizard

Completing the New Connection Wizard

You have successfully completed the steps needed to create the following connection:

My ISP

- Make this the default connection
- This connection is firewalled
- Share with all users of this computer
- Use the same user name & password for everyone

The connection will be saved in the Network Connections folder.

Add a shortcut to this connection to my desktop

To create the connection and close this wizard, click Finish.

< Back Finish Cancel

10. Select “Add a shortcut...” and click **Finish**.

Connect My ISP

User name:

Password: [\[To change the saved password, click here\]](#)

Save this user name and password for the following users:

Me only

Anyone who uses this computer

Dial:

Dial Cancel Properties Help

11. When you click on the link, the connection window will show. Click **Dial** to connect to your ISP.



MemoryStick

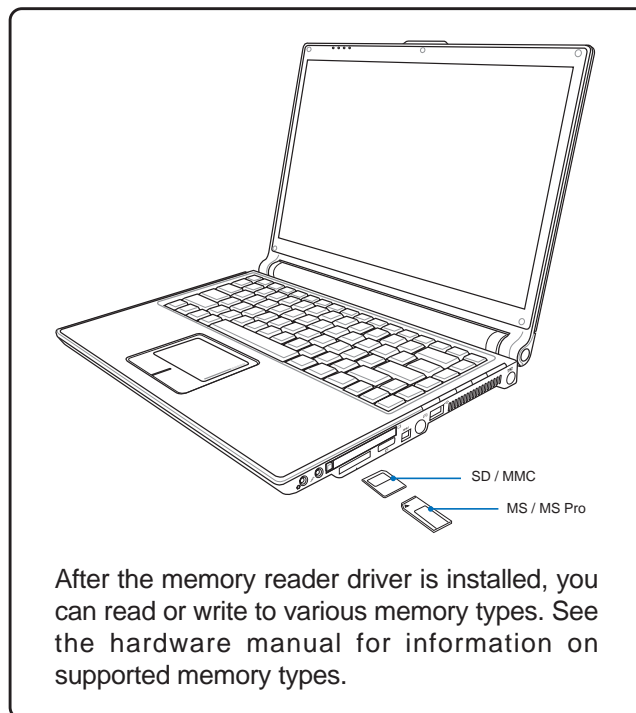


SD / MMC

RICOH

(Optional driver)

Topics Covered: Ricoh Media Driver Setup



Before

- Other devices
- Base System Device

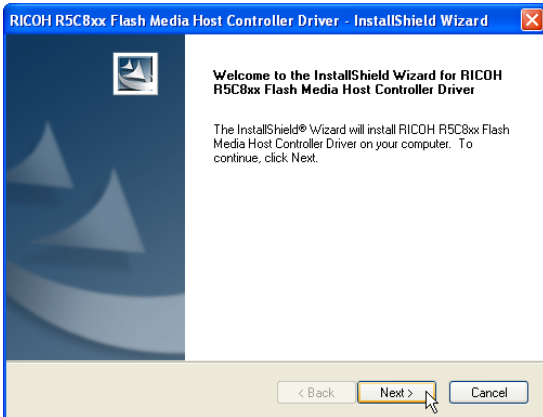
After

- IDE ATA/ATAPI controllers
- Ricoh Memory Stick Bus Host Adapter
- Ricoh SD Bus Host Adapter

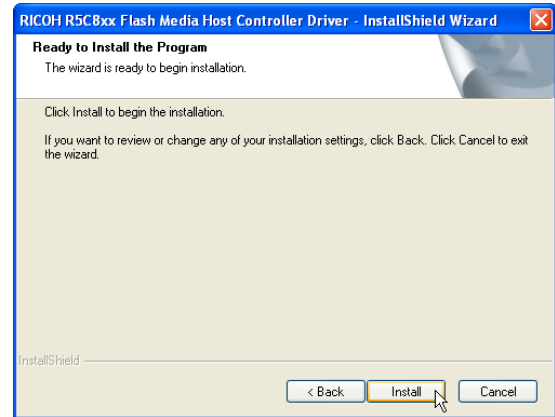
(Screens and drivers may vary depending on your model and operating system.)

Ricoh Driver Setup

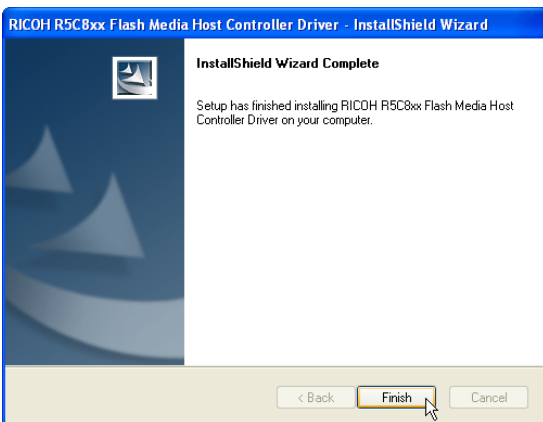
Running setup will give you the following wizard:



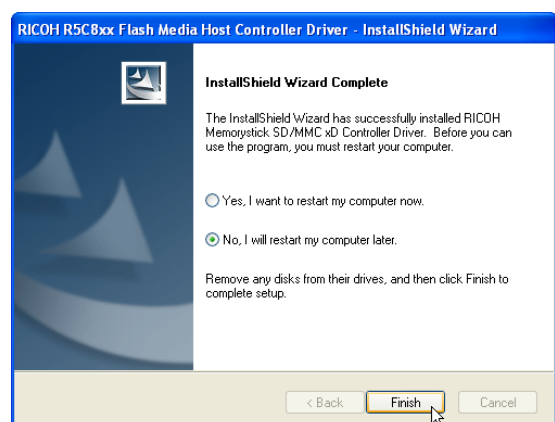
1. On the “Welcome” screen, click **Next** after confirming this is what you want to setup.



2. On the “Ready to install” screen, click **Install** to begin copying files to your system.



3. When complete, click **Finish**.



4. Setup is now complete, select “No...” and click **Finish** in order to install other items.

Software Utilities

Software Utilities



ChkMail

(Optional Utility)

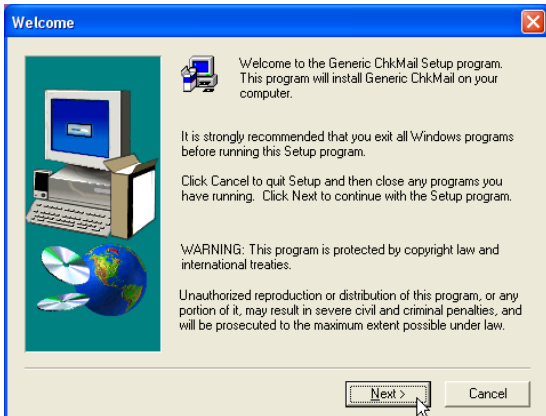
Topics Covered:

ChkMail Setup

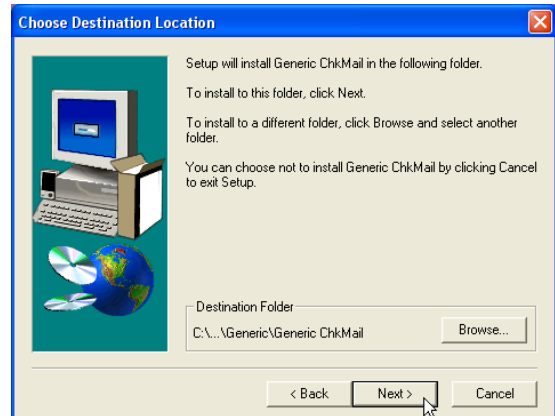
(Screens and drivers may vary depending on your model and operating system.)

ChkMail Setup

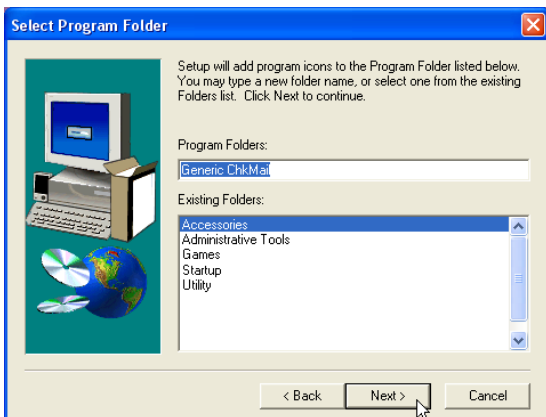
Running setup will give you the following wizard:



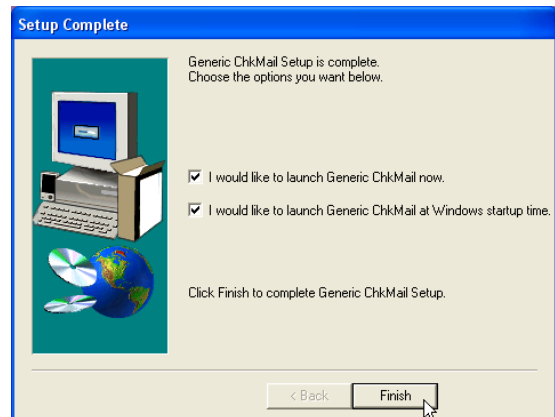
1. On the “Welcome” screen, click **Next** after confirming this is what you want to setup.



2. On the “Choose Destination Location” screen, click **Next** to continue or you may first change the destination folder.

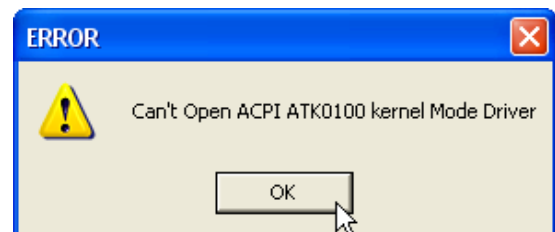


3. On the “Select Program Folder” screen, click **Next** to continue or enter a different folder name.



4. On the “Setup Complete” screen, click **Finish**.

NOTE: You cannot run this utility without first installing “ATK0100”. You will be given this message if you do not have the driver installed.





LiveUpdate

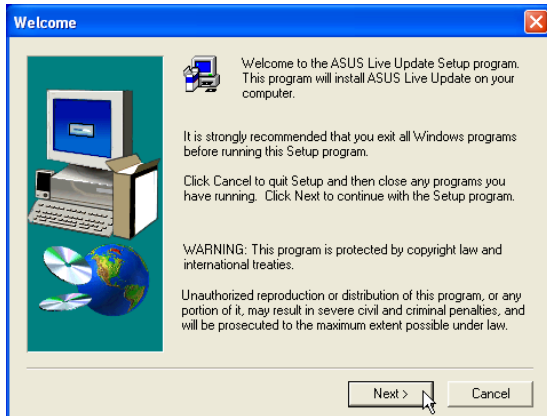
(Recommended utility)

Topics Covered:
LiveUpdate Setup
Using LiveUpdate

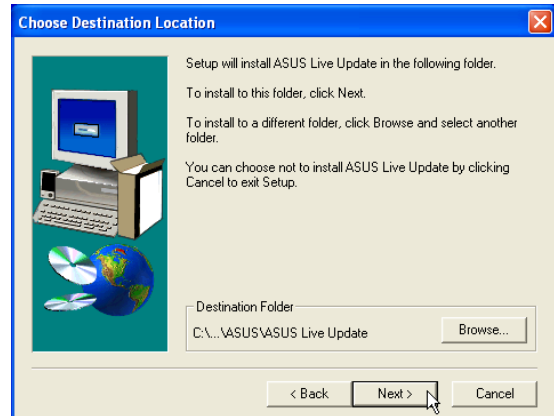
(Screens and drivers may vary depending on your model and operating system.)

LiveUpdate Setup

Running setup will give you the following wizard:



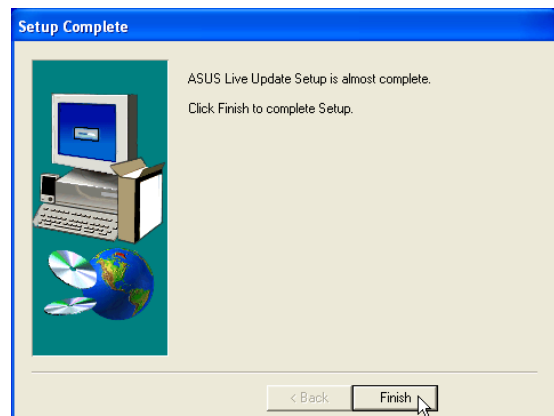
1. On the “Welcome” screen, click **Next** after confirming this is what you want to setup.



2. On the “Choose Destination Location” screen, click **Next** to continue or you may first change the destination folder.

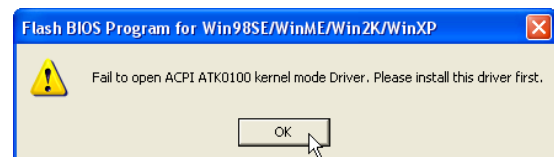


3. On the “Select Program Folder” screen, click **Next** to continue or enter a different folder name.

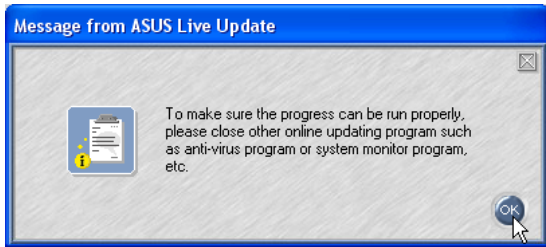


4. On the “Setup Complete” screen, click **Finish**.

NOTE: You cannot run this utility without first installing “ATK0100”. You will be given this message if you do not have the driver installed.



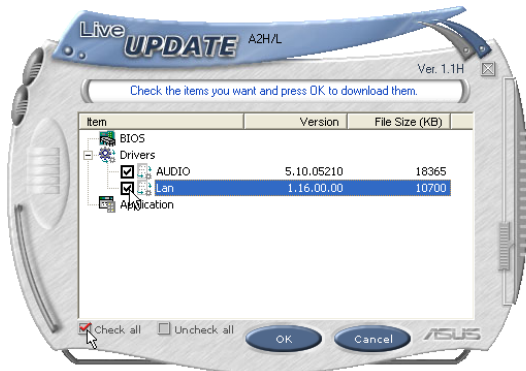
Using LiveUpdate



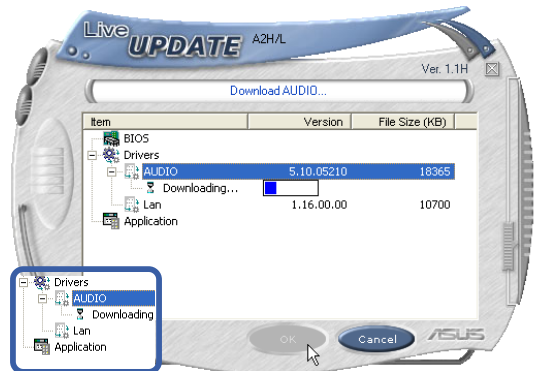
Close other software to ensure no conflicts.



Click **OK** to connect to the "Live Update" server.



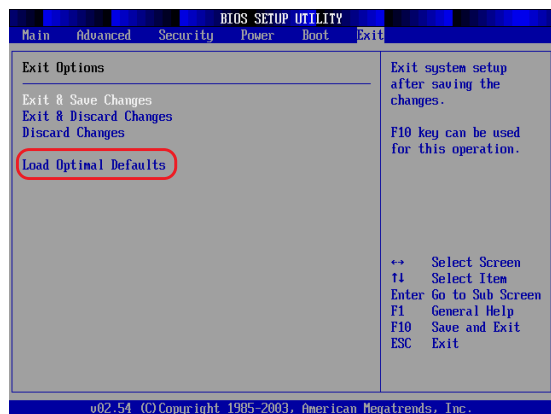
Newer versions will be shown. Check the items to update or select "Check all".



Click **OK** to download and install the update.



When update is complete, click **OK** to exit.



You may be instructed to "reset your BIOS". It entails pressing [**F2**] on bootup to enter BIOS setup and selecting **Load Setup Defaults**, and then **Exit Saving Changes** on the "Exit" menu.



Norton Internet Security

(Recommended utility)

Topics Covered:

Norton Internet Security Setup

Internet Proxy Settings

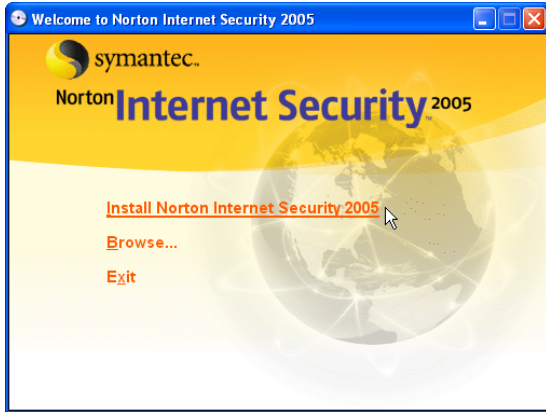
Internet Security Main Window

Internet Security Features

(Screens and drivers may vary depending on your model and operating system.)

Norton Internet Security Setup

Running setup will give you the following wizard:



1. On the “Autorun” screen, click **Install Norton Internet Security 2005**.



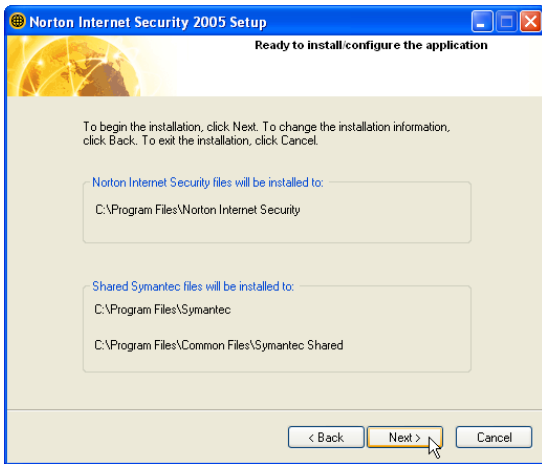
2. On the “Welcome” screen, click **Next** after reading.



3. On the “Preinstall Scanner” screen, click **Next** to skip if you are installing on a new system, otherwise you may click “Start Scan” if you are reinstalling on a used system.



4. On the “installation type” screen, click **Next** to continue or you may “Browse” to another destination folder or change other features using “Custom” installation.



5. On the “Ready to install” screen, click **Next** to continue or click “Back” to change settings.



6. When setup is complete, select “Restart Windows Later” and click **Finish** in order to install other items before restarting your system.

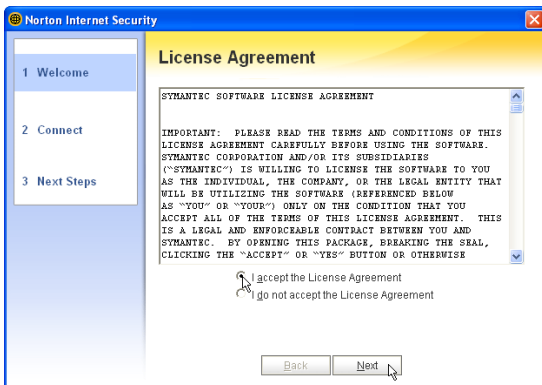


A program icon will be placed on your desktop.



Norton Internet Security will startup each time with Windows. This icon will be placed in the taskbar to show that it is running and also to provide shortcuts to configuration items.

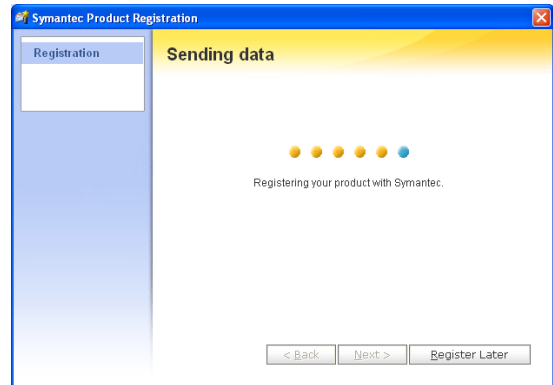
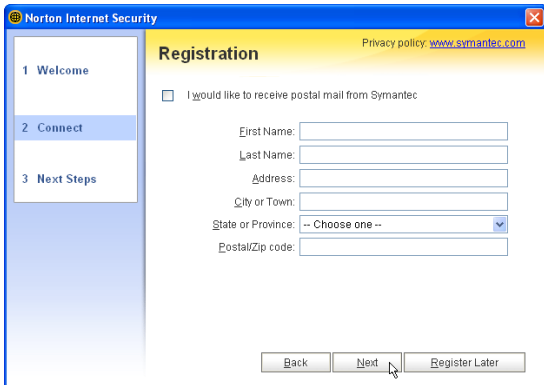
After Windows restart



1. On the “License Agreement” screen, select “I accept...” and click **Next** to continue.

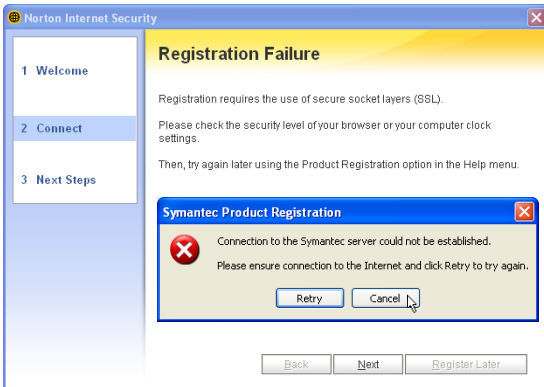


2. On the “Registration” screen, select “your country or region” and click **Next** to continue. You may give enter your information if you do not mind being contacted by Symantec.



3. On the “Registration” screen, enter your information and click **Next** to continue. Checking “...postal mail from Symantec” is optional.

4. Your registration information will be sent to Symantec through the Internet.

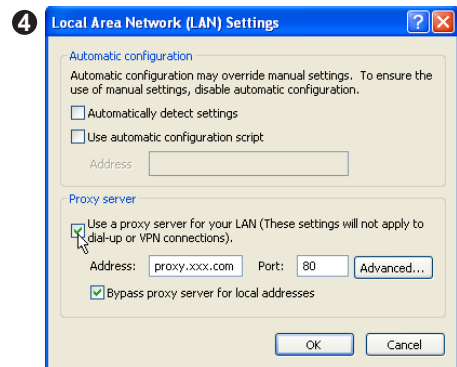


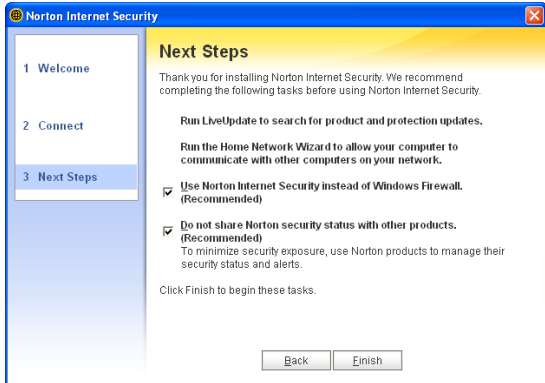
Check your Network and Internet settings if you cannot connect to the Symantec server.

5. Click **Finish** when registration is complete.

Internet Proxy Settings

Internet access within a company usually require proxy settings.

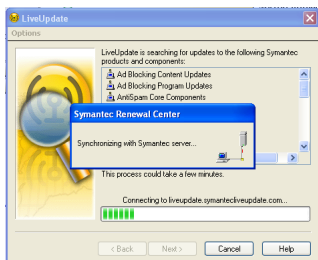




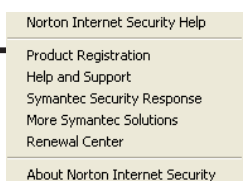
Click **Finish** to complete additional tasks.

Internet Security Main window

Open the main window from the program icon or the taskbar icon.



Click **LiveUpdate** to update the software and virus definitions.



Click **Help** for detailed descriptions and instructions for each function.

When you open the main window, you will see status for each function. When you have time, you can review each of the functions and make adjustments to your desire.

Internet Security Features

Virus and threat protection features

Norton AntiVirus provides comprehensive virus prevention, threat detection, and repair software for your computer. It automatically detects and repairs known viruses. Norton AntiVirus detects viruses and other potential risks in instant messenger attachments as well as in email messages, Internet downloads, and other files. Easy updating of the virus definitions over the Internet keeps Norton AntiVirus prepared for the latest threats.

Norton AntiVirus includes expanded threat detection of both known and emerging threats, such as spyware and other files that could put your computer at risk. Norton AntiVirus also scans files inside of compressed files.

As always, Norton AntiVirus features continually monitor your computer and protect it from known and unknown threats.

Security protection features

Norton Internet Security includes a suite of security tools that help keep your computer safe from security threats and privacy intrusions.

Personal Firewall

Protects your computer from Internet attacks, dangerous Web content, port scans, and other suspicious behavior.

Spam filtering features

As email becomes more popular, many users are receiving an increasing amount of the unsolicited commercial email messages known as spam. Not only does spam make it difficult to identify valid email messages, some spam contains offensive messages and images.

Norton AntiSpam incorporates several powerful features to reduce your exposure to unwanted online content.

Ad blocking features

Many Web sites are using more aggressive techniques to draw attention to the ads on their pages. Some have begun using larger, more prominent ads, while others rely on ad windows that appear when you enter or leave the site. Along with increasing the amount of time that it takes to display Web pages, some ads contain offensive content, cause software conflicts, or use HTML tricks to open additional browser windows.



Power4 Gear

(Required utility)

Topics Covered:

Power4 Gear Setup

Benefits of Power4 Gear

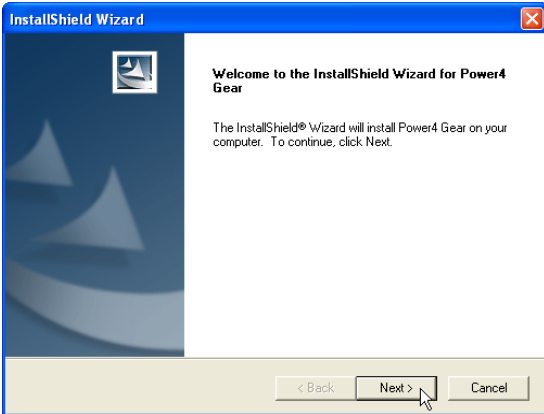
Power4 Gear Interface

Power4 Gear Configuration

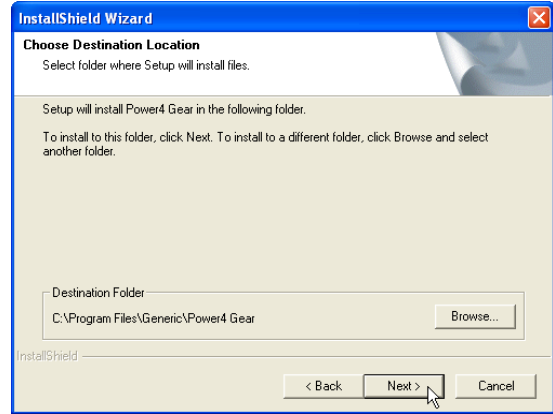
(Screens and drivers may vary depending on your model and operating system.)

Power4 Gear Setup

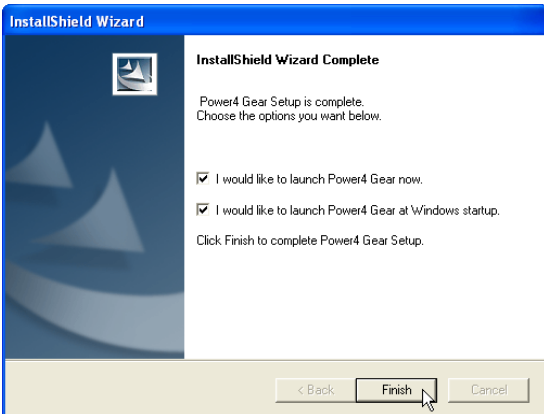
Running setup will give you the following wizard:



1. On the “Welcome” screen, click **Next** after confirming this is what you want to setup.

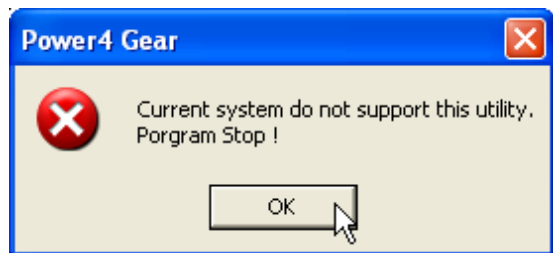


2. On the “Select Program Folder” screen, click **Next** to continue or enter a different folder name.



3. On the “Setup Complete” screen, click **Finish**.

NOTE: You cannot run this utility without first installing “ATK0100”. You will be given this message if you do not have the driver installed.





Benefits of Power4 Gear

Power4 Gear gives you control over power consumption items by allowing you to instantly “shift” from one power consumption scheme to another. The preferences or “gears” are shown below. You can change or “shift” gears by using the Power4 Gear button above the keyboard or by using the task bar icon. Power4 Gear can also be automatically activated when AC power is removed.

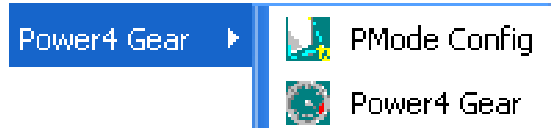
Power4 Gear Interface

Understanding the Power4 Gear buttons

Press the Power4 Gear button  above the taskbar to shift between the gears as labeled below. (The icon  may vary depending on your Notebook PC model.)

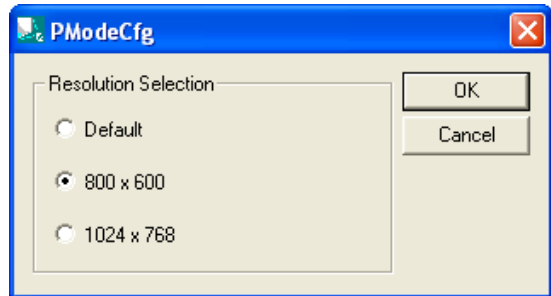
Program Icons

From Windows Start – Programs, you will find Power4 Gear folder containing **PMode Config** and **Power4 Gear** icons.



PMode Configuration

Use PMode Config to set the display output resolution to be used in conjunction with Presentation Mode. This window will also show when Presentation Mode is selected.

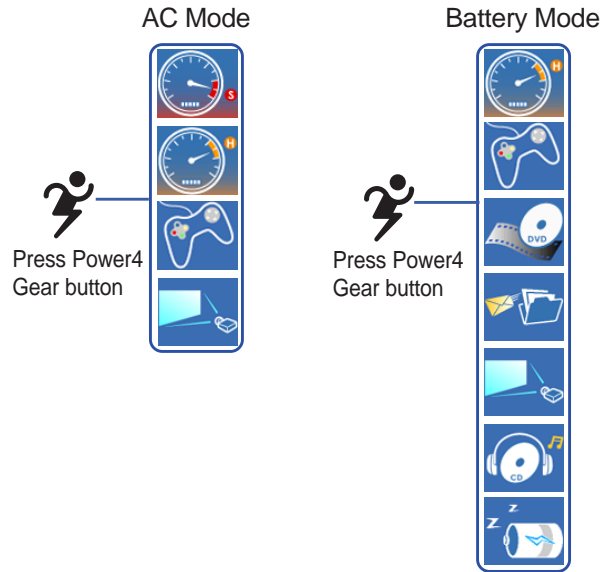
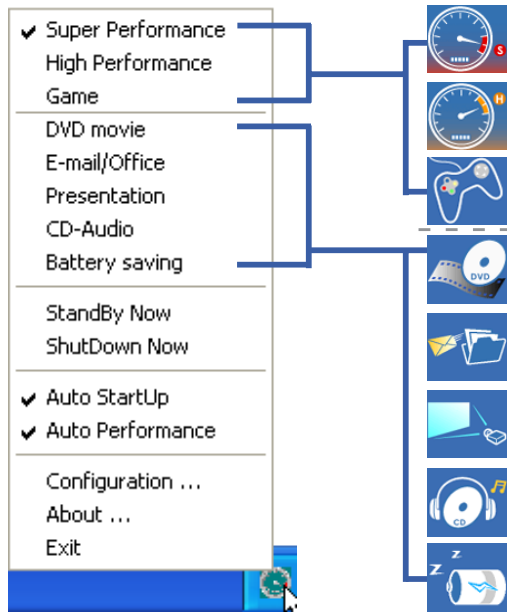


Power4 Gear

Power4 Gear starts automatically with Windows. You can right-click the icon on the taskbar for quick access to Power4 Gear settings.

Modes and Power Segments

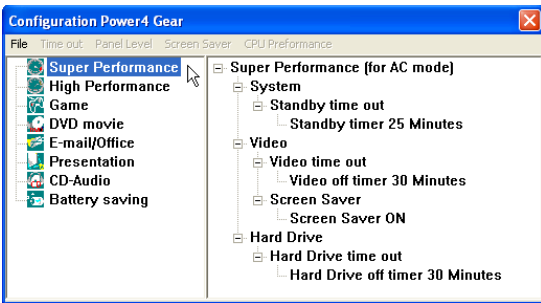
When you are using an AC adapter, the Power4 Gear button will allow switching between modes as shown in AC Mode. When you remove the AC adapter, the Power4 Gear button will allow switching between modes as in Battery Mode. When you remove or apply the AC adapter, Power4 Gear will automatically shift you up or down into the proper mode segment.



Right-click the taskbar item to bring up a menu. Available items will depend on whether you are using AC power or battery power

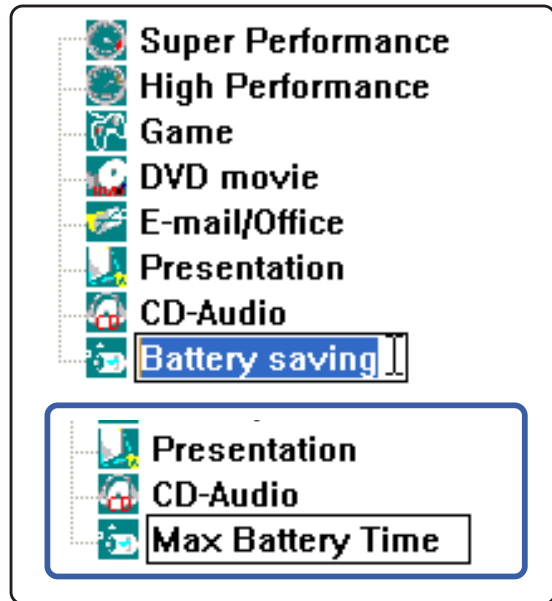
Power4 Gear Configuration

Double click an item to bring up a menu of selections and click on a value to change. To save, select “Save Configuration” form the “File” pull-down menu. If you did not save, you will be prompted to when you exit. If you change Windows “Power Options Properties,” those settings will also be reflected in Power4 Gear and vice versa.



Renaming Settings

You can rename the power saving levels as you like using the same method to rename files or folders in Windows. In the example on the right, the brightness level is decreased to 13% and the name is changed to “Max Battery Time”.



Power Saving Details

Double click an item to view possible settings. Some power saving items are only available under certain modes.

CPU Performance

- System
 - Standby time out
 - Standby timer 5 Minutes
 - CPU Performance
 - Performance level 32%

100%
64%
32%

System Standby Timer

- System
 - Standby time out
 - Standby timer 25 Minutes

1 Minute
2 Minutes
3 Minutes
5 Minutes
10 Minutes
15 Minutes
20 Minutes
25 Minutes
30 Minutes
45 Minutes
1 Hour
2 Hours
3 Hours
4 Hours
5 Hours
Never

Hard Drive Off Timer

- Hard Drive
 - Hard Drive time out
 - Hard Drive off timer 30 Minutes

1 Minute
2 Minutes
3 Minutes
5 Minutes
10 Minutes
15 Minutes
20 Minutes
25 Minutes
30 Minutes
45 Minutes
1 Hour
2 Hours
3 Hours
4 Hours
5 Hours
Never

Display Panel Brightness

- Video
 - Panel Light
 - Brightness level 33%

6%
13%
20%
26%
33%
40%
46%
53%
60%
66%
73%
80%
86%
93%
100%

Display Panel Off Timer

- Video
 - Video time out
 - Video off timer 30 Minutes

1 Minute
2 Minutes
3 Minutes
5 Minutes
10 Minutes
15 Minutes
20 Minutes
25 Minutes
30 Minutes
45 Minutes
1 Hour
2 Hours
3 Hours
4 Hours
5 Hours
Never



NB Probe

(Recommended Utility)

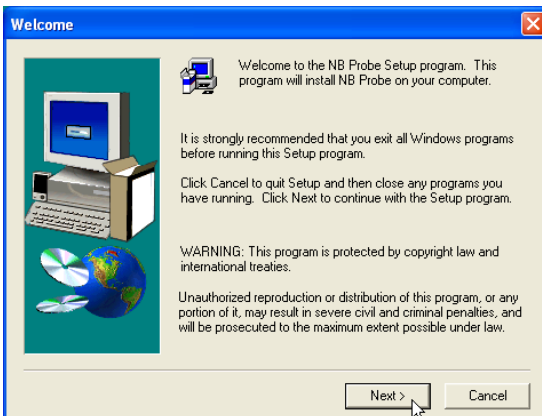
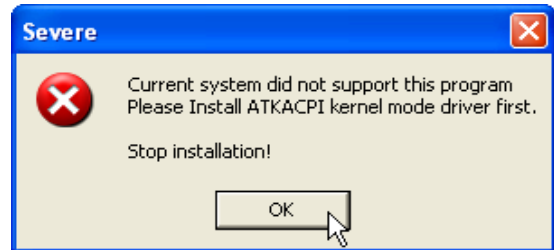
Topics Covered:
NB Probe Setup
Using NB Probe

(Screens and drivers may vary depending on your model and operating system.)

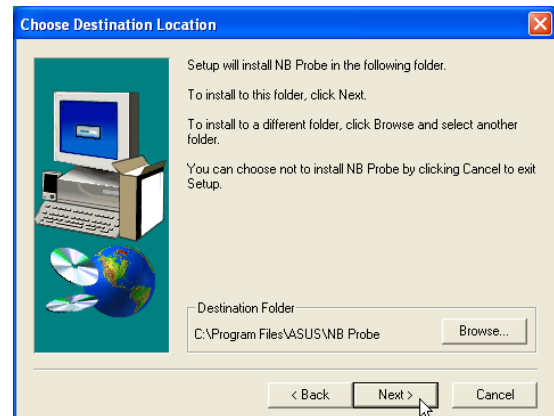
NB Probe Setup

Running setup will give you the following wizard:

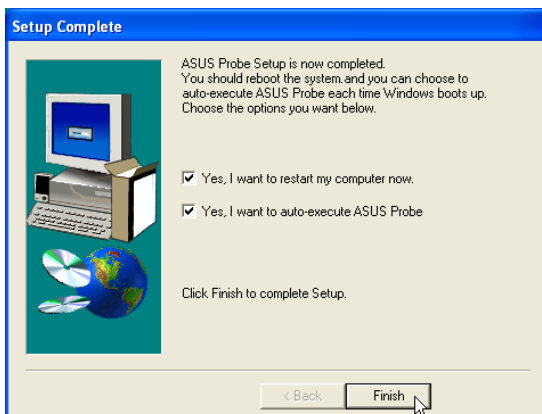
NOTE: You cannot run this utility without first installing “ATK0100”. You will be given this message if you do not have the driver installed.



1. On the “Welcome” screen, click **Next** after confirming this is what you want to setup.



2. On “Choose Destination Location”, click **Next** to continue or enter another destination folder.




3. When setup is complete, review the selections and click **Finish** to exit.

Using NB Probe

NB Probe is a convenient utility to continuously monitor your computer system's vital components, such as fan rotations, voltages, and temperatures. It also has a utility that lets you review useful information about your computer.

Starting NB Probe

NB Probe runs either in windows mode or taskbar mode. When you first start NB Probe from the desktop icon or from Windows Start, it will run in taskbar mode. Click the taskbar icon  once to run it in windows mode.



Windows XP Taskbar

Windows XP will hide some taskbar items. Click the arrow to show running services.



Click for computer summary page

Click for CPU Temp page

Click for Drive page

Click for System Information Page

Click to minimize to taskbar

Click to exit NB Probe

Click to visit ASUS web site

See CPU & Fan status here

See Disk status here

See Disk space here

Computer name: DOC-ENG

Computer status: Normal

Warning Alarms ON/OFF: Alerter (Enabled)

Hardware Sensor:

CPU Temperature	51 °C
CPU Fan	2200 RPM
CPU Speed	100 %

Disk -- S.M.A.R.T.:

1. HTS548080M9AT00	Normal
2. TSSSTcorpCD/DVDW TS-L532A	NA

Drive -- Utilization:

C:	19 %
D:	13 %
E:	0 %

Warning Alarms

Audible warning alarms are enabled by default, click once to Disable and once to Enable.



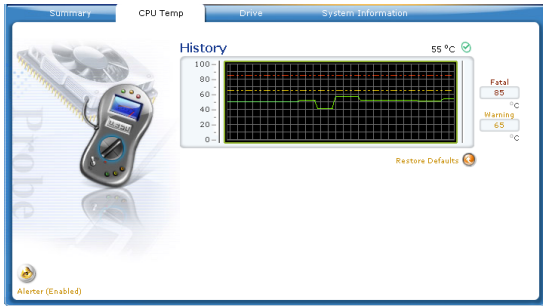
Alerter (Enabled)



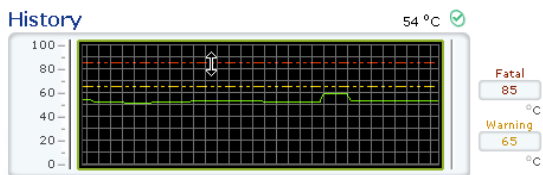
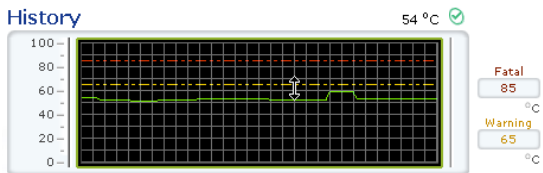
Alerter (Disabled)

Using NB Probe Monitoring

CPU Temp

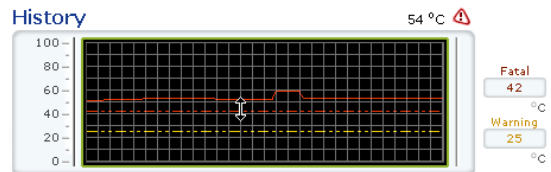
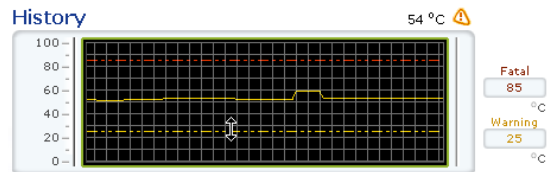


See your CPU temperatures logged using a green line. The orange line is the default warning threshold and the red line is the default fatal threshold.

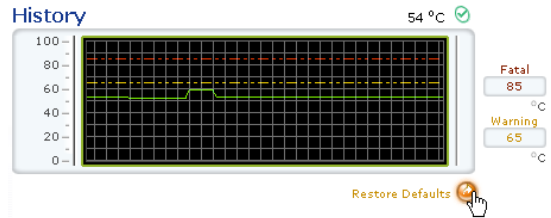


Click and drag the warning (orange) or the fatal (red) lines up or down with your cursor.

Temp Threshold Adjustment



If the warning or fatal lines rise above the CPU temperature line (green), then the CPU temperature line (green) will turn orange or red to show a warning or fatal condition.



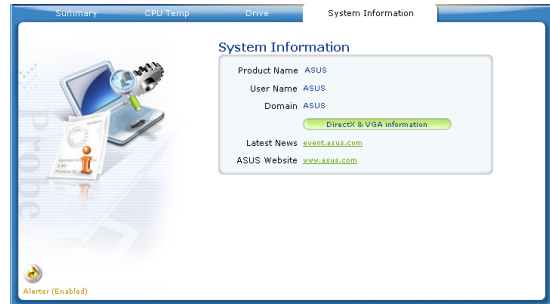
Click Restore Defaults to return the warning and fatal thresholds to their factory defaults. As you see here, the condition returns to normal (check mark icon).

Using NB Probe Monitoring (Cont.)

Drive

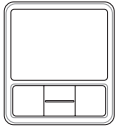


System Information



See your system information on this page.

Shows the used and free space of each hard disk drive and the file allocation table or file system used. Information on other hard drives can be accessed by clicking on the relevant drive letter. For DVD drives, the region code is displayed under the picture of the optical drive.



TouchPad

(Recommended Utility)

Topics Covered:

TouchPad Setup

Overview of the TouchPad

Scrolling Properties Page

Tap Zones Properties Page

More Features Properties Page

Button Actions Properties Page

Touch Properties Page

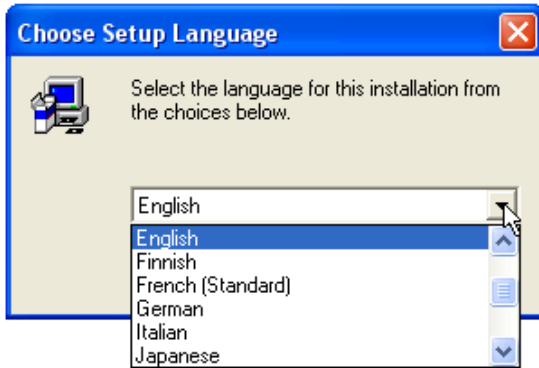
Edge Motion Properties Page

Frequently Asked Questions

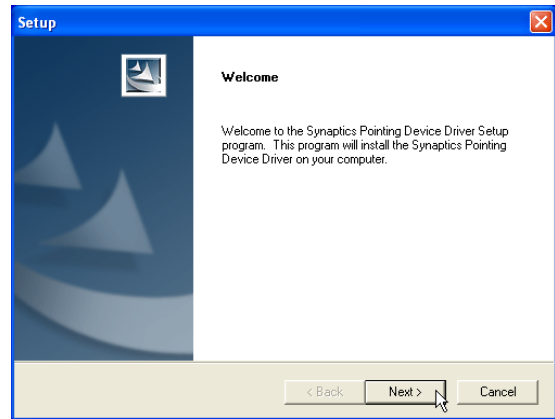
(Screens and drivers may vary depending on your model and operating system.)

Touchpad Setup

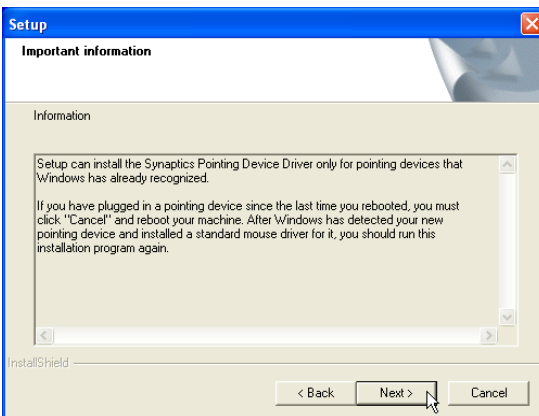
Running setup will give you the following wizard:



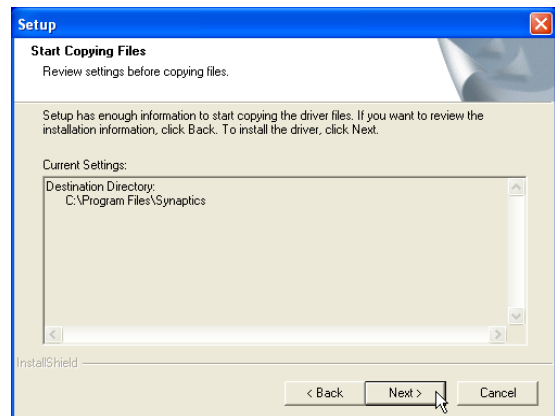
1. On the “Choose Setup Language” screen, select a language and click **OK** to continue.



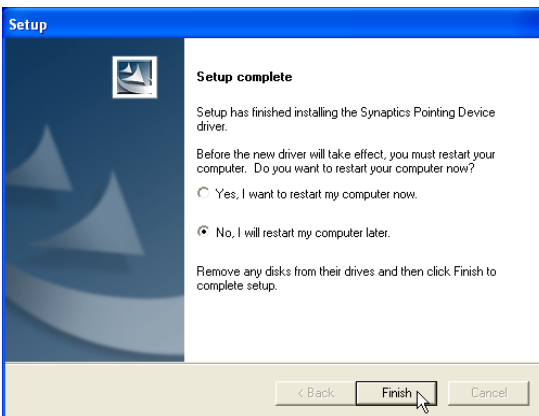
2. On the “Welcome” screen, click **Next** after confirming this is what you want to setup.



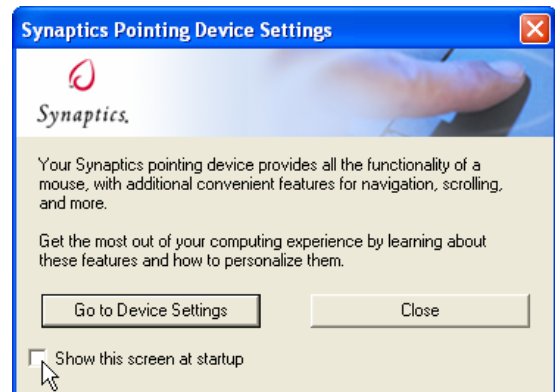
3. On the “Information” screen, click **Next** after reading.



4. On the “Start Copying Files” screen, click **Next** after confirming the current settings.



5. On the “Setup Complete” screen, select “No,...” and click **Finish**.



6. You can deselect the welcome screen from appearing each time you start Windows.

Synaptics® TouchPad Features

Your Synaptics TouchPad is much more powerful than an old-fashioned mouse. In addition to providing all the features of an ordinary mouse, your TouchPad allows you to:

- Tap on the Pad Instead of Pressing the Buttons
- Drag Icons, Windows and Other Objects without Using Buttons
- Adjust the Overall Touch Sensitivity
- Customize Buttons and Taps
- Prevent Accidental Pointing While Typing (also known as Palm Check)
- Scroll Through a Document Without Using Scroll Bars
- Zoom In/Out and Pan on Documents
- Move the Pointer Long Distances
- Fine Tune the Pointer Movement

Tap on the Pad Instead of Pressing the Buttons

Tapping on the surface of the pad is the same as clicking the left mouse or TouchPad button (i.e. the primary TouchPad button). Tapping is usually quicker and more convenient than using the button. To double-click, just tap twice. A light, quick tap works best; very hard or very slow taps are less likely to work.

Drag Icons, Windows and Other Objects without Using Buttons

Often, you need to hold the mouse or TouchPad button down while moving the pointer (to move an icon or window around the screen, for example). This action is called dragging. Just like clicking and double clicking, you can also drag without using the button.

To move or drag an object (equivalent to pressing and holding the left TouchPad button):

- 1) Position the pointer over the object and tap twice, down-up-down, leaving your finger on the TouchPad on the second tap. This action is sometimes called tap-and-a-half.
- 2) Now move the selected object by sliding your finger across the TouchPad surface.
- 3) Lift your finger to drop the object.

Tap-and-a-Half

You might wonder what happens when you reach the edge of the pad and you are dragging an object. The Synaptics TouchPad has a feature called Locking Drags. This feature allows you to lift your finger from the pad without ending the drag. You can drag an object across the screen using several finger strokes. To end a Locking Drag action, tap again. The Synaptics TouchPad also has a feature called Edge Motion to help with long distance dragging. See Move the Pointer Long Distances for details.

The Tap and Drag and Locking Drags features are located on the Touch Properties Page in the Mouse Properties dialog.

Adjust the Overall Touch Sensitivity

You can control how much finger pressure you must apply before the TouchPad responds by adjusting the Touch Sensitivity slider. This slider is located on the Touch Properties Page in the Mouse Properties dialog.

At higher (more sensitive) Touch Sensitivity settings, the TouchPad recognizes even a very slight touch. If you see undesired or erratic pointer motion, try a lower setting. Lower (less sensitive) settings require a firmer touch to move the pointer. In general, a lighter touch works best.

Customize Buttons and Taps

Most TouchPads come with two buttons that work just like traditional mouse buttons. You can customize the behavior of these buttons.

Tapping on the TouchPad surface also performs the same action as pressing a button. Tapping in the center of the pad will always produce a left-click (the action of the primary button), but you can configure each of the four corners of the TouchPad surface to act as different buttons. These special corner regions are called tap zones. With four corner tap zones, the center of the TouchPad, and the two physical buttons you can turn your TouchPad into a seven-button mouse!

A customization example:

Suppose you want to use your TouchPad like a three-button mouse. You can configure the left TouchPad button to produce middle clicks when pressed. Remember that tapping on the TouchPad will produce left clicks, and pressing the right TouchPad button will produce right clicks. For additional convenience, you can configure the top right corner tap zone of the TouchPad to produce right clicks. Looking at the TouchPad surface in the picture below, taps in the top right corner (the red shaded area) will produce right clicks, but tapping anywhere else on the TouchPad (the solid gray area) produces left clicks.

An Example TouchPad

There are many different actions that you can assign to the buttons and tap zones. The following actions are provided as built-in features with the Synaptics TouchPad device driver. Additional actions might be available if you have installed any third-party TouchPad Plug-In software.

- **Jump to the Start Button.** This action causes the pointer to jump to the Start button in the Windows task bar and automatically opens the Start Menu.
- **Jump to the current application's menu.** This action causes the pointer to jump to the left-most entry in the application's window menu (usually the File menu) and automatically pops up the submenu.
- **Minimize the current application.** This action minimizes the current application's window. If the current application's window is already minimized, this action will restore it to its normal size and location.
- **Maximize the current application.** This action maximizes the current application's window (expands it to cover the full screen). If the current application's window is already maximized, this action will restore it to its normal size and location.
- **Run a program of your choosing.** This action allows you to specify the name of any program you want to run automatically when you click the button or tap in the tap zone.

To customize taps and buttons, go to the Button Actions Properties Page in the Mouse Properties dialog.

Prevent Accidental Pointing While Typing

Unintentional pointer movement and accidental taps can be caused by accidentally brushing the surface of the TouchPad with your palm or another part of your hand. The results of this contact can be observed as a changing cursor location when typing, causing subsequent text to appear in the wrong place. Or text may “spontaneously” be highlighted and replaced. Most often, this unwanted pointing activity occurs when typing on the keyboard. The TouchPad can detect and prevent accidental and unwanted pointer movement while you are typing.

If you see unwanted pointer movement occurring while you are typing, you can adjust the Palm Check slider located on the Touch Properties Page in the Mouse Properties dialog. Move the slider thumb to the right towards Maximum. Now accidental brushes of your hand on the TouchPad while you are typing are more likely to be ignored.

On the other hand, in the midst of typing, you might purposefully use the TouchPad to point and click, and sometimes the TouchPad may not seem to respond. In this case, move the slider thumb to the left towards Minimum. Now pointing during typing is less likely to be interpreted as an accidental brush with the pad surface, and will not be ignored.

Scroll Through A Document without Using Scroll Bars

Virtual Scrolling allows you to perform a very common task – scrolling documents – without having to move the pointer away from your work. By simply sliding your finger up and down the right edge of the TouchPad, the contents of the current window will scroll vertically. Similarly, by sliding your finger left and right along the bottom edge of the TouchPad, the contents will scroll horizontally. You no longer need to laboriously maneuver the pointer to the small scroll bar elements; you can scroll no matter where the pointer happens to be.

Virtual Scrolling works with document windows (like word processors and spreadsheets), and it also works with file lists, font lists, and other scrollable items. As a rule, you can use Virtual Scrolling when you are working in any window that has a scroll bar.

And Virtual Scrolling does more than just make scrolling more convenient. It also can make scrolling smoother. When you scroll by dragging the scroll thumb with the mouse, many applications do not re-display the document window until you release the mouse button. Virtual Scrolling makes navigation through documents easier, because it forces the application to re-display the window contents as you scroll.

How do I use Virtual Scrolling?

To customize the Virtual Scrolling feature, go to the Scrolling Properties Page located in the Mouse Properties dialog.

Zoom In/Out and Pan on Documents

Note that zooming and panning only work in applications that support the Microsoft Intellimouse. With Intellimouse aware applications, you can zoom and/or pan to quickly maneuver your way through lengthy documents. To jump to a distant location within your document, zoom out, click on the desired location, then zoom in. To scroll horizontally and vertically at the same time, simply pan in a diagonal direction!

Move the Pointer Long Distances

Suppose you are dragging an object, scrolling at high speed (via Virtual Scrolling!), or merrily moving the pointer when you suddenly reach the edge of your TouchPad. Don't despair, the Synaptics TouchPad Edge Motion feature comes to the rescue! Edge Motion helps with long distance pointer motion. When you reach an edge of the TouchPad, the pointer (or scroll thumb when Virtual Scrolling) continues to move in the same direction until you lift your finger from the TouchPad or move your finger away from the edge.

Edge Motion speed can be pressure-sensitive or constant. Pressure-sensitive speed means that the harder you press, the faster the object or pointer moves.

You can configure the Edge Motion feature on the Edge Motion Properties Page in the Mouse Properties dialog.

Fine Tune the Pointer Movement

The Synaptics TouchPad has many additional features to help you control the way your pointer moves. Please take a look at the list of additional features.

Accessories

Your TouchPad is a productivity enhancing tool, designed for serious work. But we think it should also be fun. We have included two fun application programs that demonstrate some of the capabilities of the TouchPad: Pressure Graph and The Incomparable, Mysterious Synaptics MoodPad.

To run these applications, click once on the Synaptics TouchPad Icon in the Taskbar, go to the Accessories menu and select the desired application.

More About the TouchPad

The TouchPad detects your finger by capacitive sensing (it is not sensitive to heat or applied force). As your finger approaches the pad, it alters the electric field in the vicinity of the pad surface. The TouchPad sensor is just a circuit board with a matrix of conductive traces printed on the top surface. A special chip on the back side of the TouchPad continuously measures the capacitance of these traces, and thus can determine the presence and location of your finger.

To get the most out of your TouchPad, be sure that the TouchPad driver software is installed. If the Synaptics TouchPad driver is properly installed, the Mouse Properties dialog will include several TouchPad tabs along the top in addition to the standard mouse tabs.

Property Pages

The property pages allow you to customize TouchPad settings for your Notebook PC. The following pages will describe each property page with the Synaptics logo. The "Buttons", "Pointers", and "Pointer Options" pages come with Windows and should be described in Windows documentation.

Scrolling Properties Page

The Scrolling properties page allows you to customize the Virtual Scrolling capabilities of your TouchPad.

In some applications, the scroll zones which activate Virtual Scrolling can be used for zooming too.

Enabling Virtual Scrolling of the Active Window

Check the appropriate boxes on this page for the type of Virtual Scrolling that you prefer:

- Horizontal Scrolling
- Vertical Scrolling
- Coasting

Choose where you want Virtual Scrolling to occur:

- Scroll Selected Item
- OR -
- Scroll Item Under Pointer

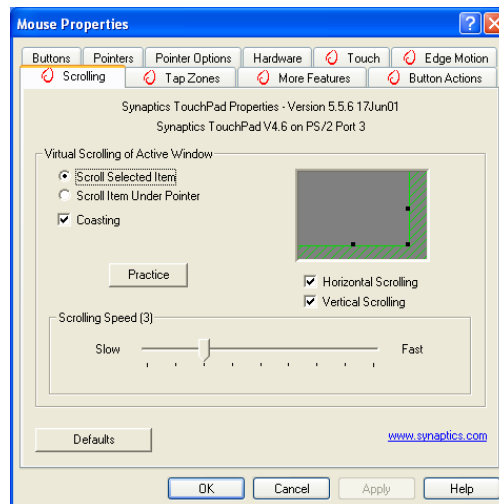
Customizing Scroll Zone Sizes

This page includes a small map of the TouchPad with the scroll zones shaded in red. See the Scroll Zone TouchPad Map for a more detailed description.

You can adjust the size of each zone by dragging one of the black resize handles on the TouchPad map. If you are having trouble activating the Virtual Scrolling feature, you might want to try making the scroll zones wider. If you find that scrolling sometimes gets activated when you didn't mean to scroll, try narrowing the scroll zones.

Customizing Virtual Scrolling Speed

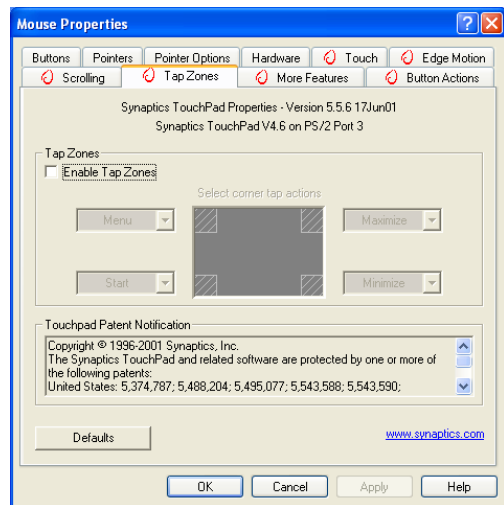
You can control the speed of Virtual Scrolling by adjusting the Scrolling Speed slider on this page. Drag the slider thumb to the right for faster scrolling.



Tap Zones Properties Pages

The Tap Zones properties pages allow you to assign custom actions to taps in the Touchpad's corner zone regions (or tap zone regions).

The Synaptics TouchPad driver may also control other pointing devices attached to your system. If the Synaptics TouchPad driver is controlling more than one pointing device on your system, the Synaptics pages on the Mouse control panel will have a drop-down box listing all of the pointing devices that are controlled. You may set separate settings for each by selecting the appropriate device (settings which don't apply to a particular pointing device will be grayed out).



Customizing the Tap Zones

When the tap zones are enabled, each tap inside a corresponding tap zone region on your TouchPad can have a different meaning or action. For example, you can define the upper right corner tap zone to mean right clicks. Then when you tap your finger on the upper right corner of your TouchPad, it is as if you are clicking the right mouse or TouchPad button.

This page includes a small map of the TouchPad with the active tap zones shaded in red. Next to each zone is a text box specifying the action for that zone.

To Customize:

1. To activate the corner tap zones, check the box next to the text Enable Tap Zones. An unchecked box means that all taps on every part of the TouchPad surface will have left-click behavior.
2. To change an action for a particular zone, locate the text box nearest the zone. The text box displays the current action for this zone (for example, it might say No Zone which means that this particular zone is disabled and any taps here will produce the default left-click action). Click on the down arrow button located to the right of the text to display a list of actions. Select the desired action.
3. Each tap zone can be resized to be as large or as small as you desire by dragging one of the black resize handles located on the TouchPad map.

More Features Properties Page

The More Features properties page allows you to control the following features of your Synaptics TouchPad:

Stop Pointer at Window Borders

This feature constrains the pointer to stay inside the active window. When you try to move the pointer outside the window, it stops at the edge. If you try a second time, the pointer is free to leave the window.

Stopping the pointer at the window borders makes it easy to access controls that lie around the edges of windows. For example, to close or resize a window, you can casually toss the pointer in the general direction of the close box or the edge of the window, and the pointer will stop exactly where you want it.

Snap to Default Button

This feature automatically moves the pointer to the Default Button when a dialog box appears on your screen.

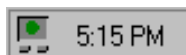
Slow Motion Key

Sometimes you might need more accuracy when pointing with the TouchPad, such as in a drawing program. The speed of the pointer can make this type of accuracy difficult to obtain. To slow down the pointer movement, you can specify a slow motion key. Then, for slow pointer movement, press and hold this key as you move the pointer.

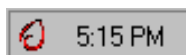
Constrained Pointer Key

At times you may want to restrict the pointer to move only horizontally or only vertically. You can specify a constrained pointer key, then press and hold this key as you move the pointer. The initial pointer direction when holding this key determines whether the pointer is constrained to move only horizontally or only vertically.

Synaptics TouchPad Tray Icon



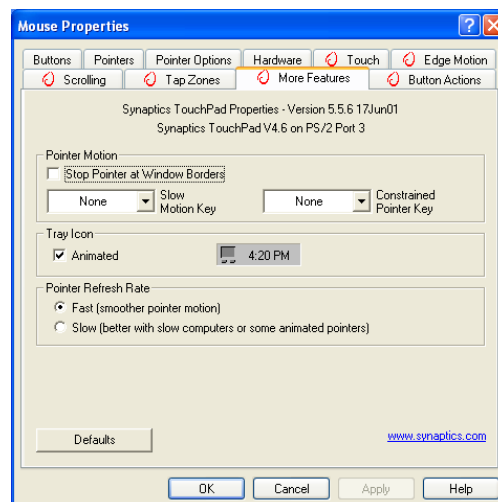
The Synaptics TouchPad tray icon appears in the Windows Taskbar near the clock. You can choose between two icons:



This is the animated Touch Meter icon. The size of the dot on the touch meter indicates the amount of finger pressure. The icon turns blue while Virtual Scrolling is in progress.

This is the non-animated Synaptics logo icon.

You can access the “TouchPad Properties” dialog by double clicking on either tray icon.



Button Actions Properties Page

The Button Actions properties page allows you to customize the physical buttons of your TouchPad.

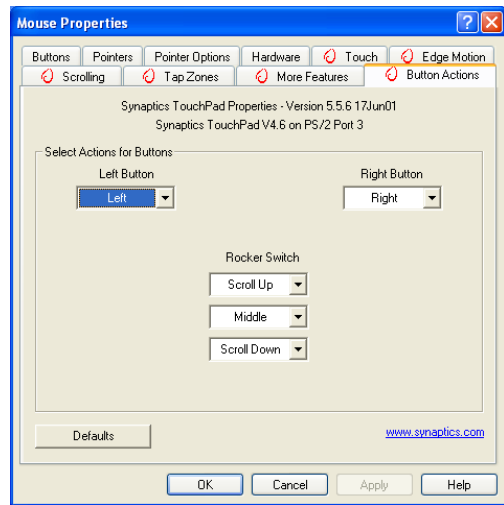
The **Rocker Switch** settings are available on Notebook PC's with scroll buttons between the left and right buttons.

Customizing Button Assignments

You can customize the TouchPad buttons in the same way that you customize the tap zones.

To Customize:

Each button has a text box that displays the current action (for example, it might say Left, which means the left-click or primary-click action). To display a list of possible actions, click on the down arrow button located to the right of the text. Select the desired action.



Touch Properties Page

The Touch properties page allows you to customize the tap response and sensitivity of your TouchPad.

Taps

Check the appropriate boxes in the Taps section of the Touch Properties Page for the tapping capabilities that you prefer:

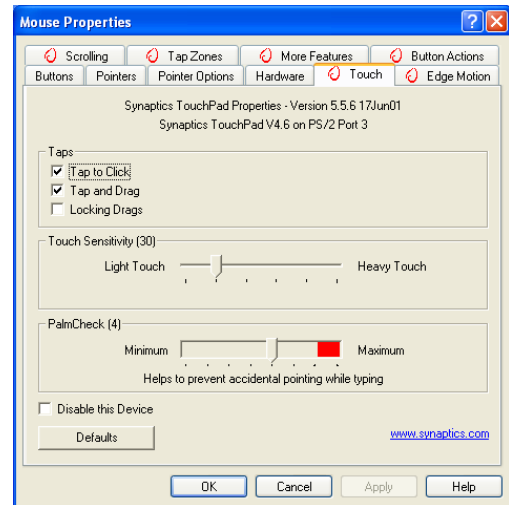
- Tap to Click
- Tap and Drag
- Locking Drags

Touch Sensitivity

Use the Touch Sensitivity slider to control how much finger pressure you must apply before the TouchPad responds. See Adjust the Overall Touch Sensitivity.

Palm Check

The Palm Check slider controls the TouchPad's detection of accidental and unwanted pointing movement. In addition to detecting palm contact with the TouchPad, the TouchPad can ignore much of the accidental and unwanted pointer movement that may occur while typing (due to accidentally contacting your TouchPad). See Prevent Accidental Pointing While Typing for more details.



Edge Motion Properties Page

The Edge Motion properties page allows you to customize the long distance pointer motion capabilities of your TouchPad. When your finger reaches the edge of your TouchPad, the Edge Motion feature allows the pointer to continue to move until you lift your finger. See [Move the Pointer Long Distances](#) for more details about the Edge Motion feature.

Enabling Edge Motion

Check the appropriate boxes on this page for the types of Edge Motion that you desire:

- When Dragging
- Always
- When Scrolling

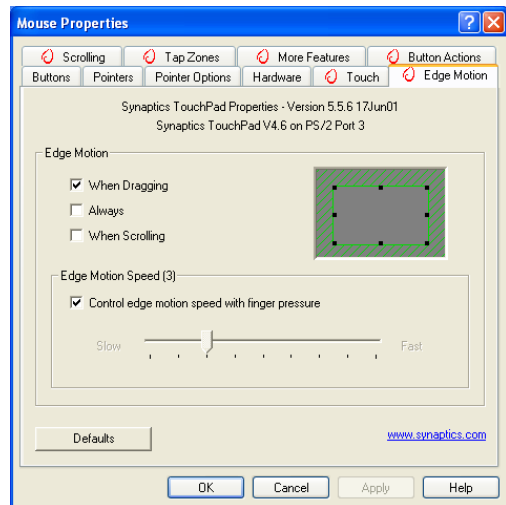
Customizing Edge Zone Sizes

This page includes a small map of the TouchPad with the edge zones shaded in red. See the [Edge Zone TouchPad Map](#) for a more detailed description. You can adjust the size of each zone by dragging one of the black resize handles on the TouchPad map. If you are having trouble activating the Edge Motion feature, you might want to try making the edge zones wider.

Customizing Edge Motion Speed

During Edge Motion, the speed at which the pointer (or dragged object or Virtual Scrolling scroll thumb) moves can be pressure-sensitive or constant. With pressure-sensitive speed, the harder you press the faster the object or pointer moves. For this type of speed, check the box labeled **Control edge motion speed with finger pressure**.

If you prefer a constant speed for Edge Motion, you can adjust the speed with the Edge Motion speed slider located on this page.



Frequently Asked Questions

Q: When I use Virtual Scrolling, the pointer jumps over to the scroll bar, and then jumps back where it came from when I'm done. Is this normal?

A: Yes.

Q: Why doesn't the Virtual Scrolling feature work in some windows, even though they have a scroll bar?

A: In order to scroll, Virtual Scrolling must be able to "see" the window's scroll bar. If the scroll bar is partially obscured by another window, or partially off the screen, then Virtual Scrolling will not activate in that window. In general, a window's scroll bar must be entirely on the screen, and fully visible, in order to use Virtual Scrolling in that window. There is an exception to this rule: Virtual Scrolling has "special knowledge" about many common types of windows, and can scroll them even if their scroll bars are not visible on the screen. A very small number of applications use nonstandard scroll bars that might not work reliably with Virtual Scrolling.

Q: Why do some windows scroll smoothly, while others re-display their contents only occasionally as I scroll?

A: The way a window responds to its scroll bars is entirely up to the application which owns that window. Some applications "smooth-scroll," while others wait until you release the scroll bar before updating their contents. Virtual Scrolling "knows" about many common applications and window types, and uses this knowledge to "trick" many windows into smooth-scrolling (Microsoft® Word™ document windows, for example, do not normally smooth-scroll, but they do when you use Virtual Scrolling). If Virtual Scrolling does not "know" about a particular type of window, it still approximates smooth-scrolling by causing the window to re-display when your finger slows down or stops. This can help you more accurately scroll to the right place in a document.

Q: Why does the scroll thumb sometimes "jump around" when I scroll, and not go exactly where the pointer is?

A: Again, the application actually has complete control over the way the scroll thumb moves. Depending upon the window contents, some applications will actually prevent you from moving the scroll thumb to certain locations. Sometimes, the scroll thumb is only "allowed" to come to rest at one or two positions along the scroll bar! In these cases, even if you were to manually drag the scroll thumb with the pointer, you would find that it would "jump" to a final location when you released it. Virtual Scrolling, unfortunately, cannot control how applications manage their scroll bars.

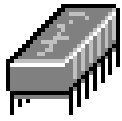
Frequently Asked Questions (Cont.)

Q: Why doesn't Virtual Scrolling work properly with Microsoft Internet Explorer?

A: Make sure you are using Internet Explorer version 4.01 or later, and that the Use Smooth Scrolling option on the Advanced page of the Internet Explorer Properties dialog is NOT checked.

Q: When I press and hold the shift key or the control key (CTRL), the pointer movement is either very slow or restricted to move only horizontally or only vertically. What is happening?

A: The shift keys and the control keys are special and are used for various things, such as selecting multiple files in Microsoft Windows Explorer or for zooming in and out on a spread sheet in Microsoft Excel. These keys can also be used for special pointer movement, such as for slowing the pointer down or for constraining the pointer to move only horizontally or only vertically. For example, you can assign the left shift key to be the Slow Motion Key. Then when you press and hold the left shift key, the pointer motion will be slower than usual. Note that you can still use this shift key for other special behaviors! You can still press and hold the left shift key to select multiple files in Microsoft Windows Explorer, but the pointer motion will also be a bit slower. If you see slow or constrained pointer movement when pressing shift or CTRL and you want to turn off this special behavior, go to the More Features Properties Page in the Mouse Properties dialog and uncheck the appropriate boxes.



WINFLASH

WinFlash

(Recommended Utility)

Topics Covered:
WinFlash Setup
Using WinFlash

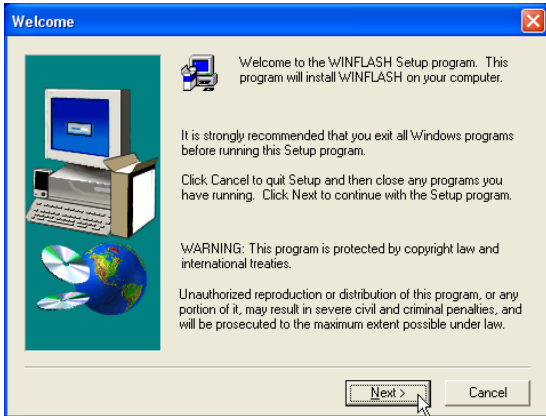
(Screens and drivers may vary depending on your model and operating system.)

WINFLASH Setup

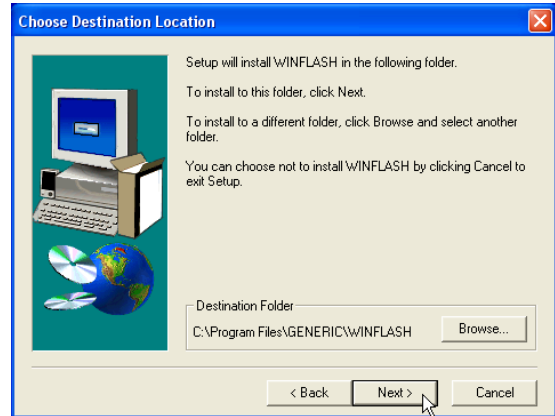


Make sure you install ATKACPI first or else you will get this message.

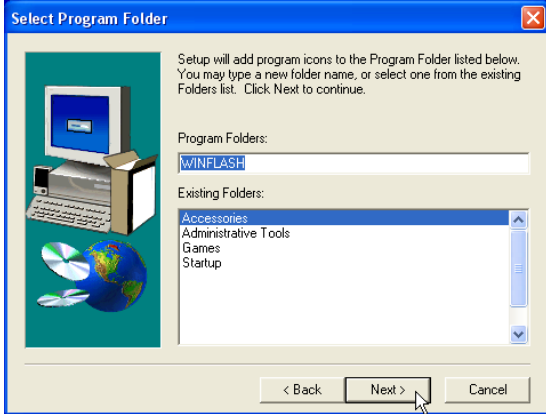
Running setup will give you the following wizard:



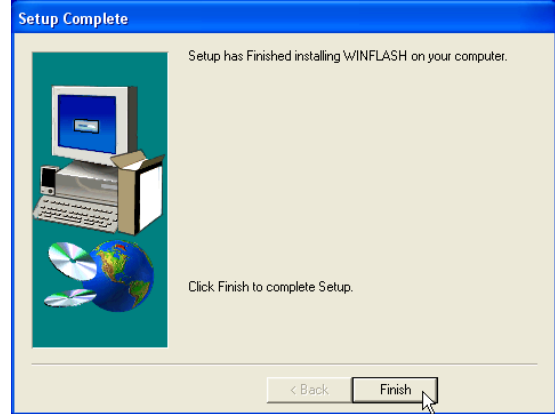
1. On the “Welcome” screen, click **Next** after confirming this is what you want to setup.



2. On the “Choose Destination Location” screen, click **Next** to continue or you may first change the destination folder.



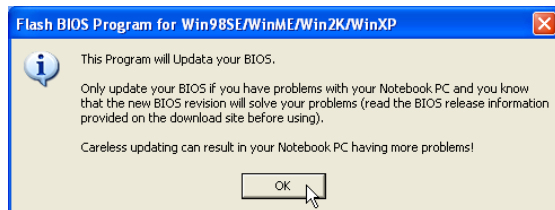
3. On the “Select Program Folder” screen, click **Next** to continue or enter a different folder name.



4. On the “Setup Complete” screen, click **Finish**.

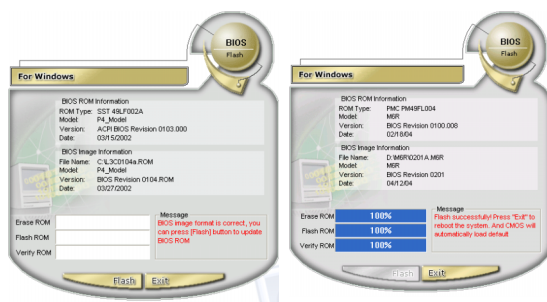
Using WINFLASH

WINFLASH is a simple utility to update your Notebook PC's BIOS. To run **WINFLASH**, access the **All Programs** shortcut through the **Start** button.



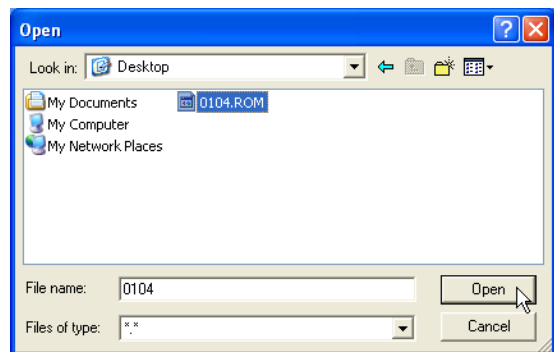
Do not update your BIOS for no reason.

You will be warned that you should only update your BIOS if you know it will solve a specific problem. If you update your BIOS using the wrong BIOS file, your Notebook PC may not boot up.

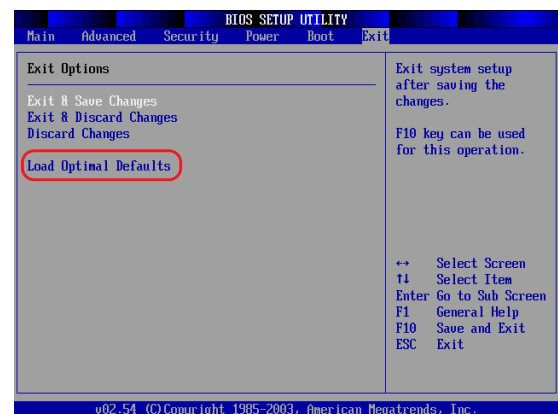


Text in these screens are examples only and will not reflect your system.

Compare the BIOS ROM (your current BIOS) to the BIOS image (the new BIOS). If this is correct, click **Flash** to write the new BIOS to your Notebook PC. You need to restart your Notebook PC and "reset your BIOS". See instructions on the next page.



When you enter WINFLASH, you will be immediately asked for the BIOS image file. Browse to the file and click **Open**.



You may be instructed to "reset your BIOS". It entails pressing [F2] on bootup to enter BIOS setup and selecting **Load Setup Defaults**, and then **Exit Saving Changes** on the "Exit" menu.



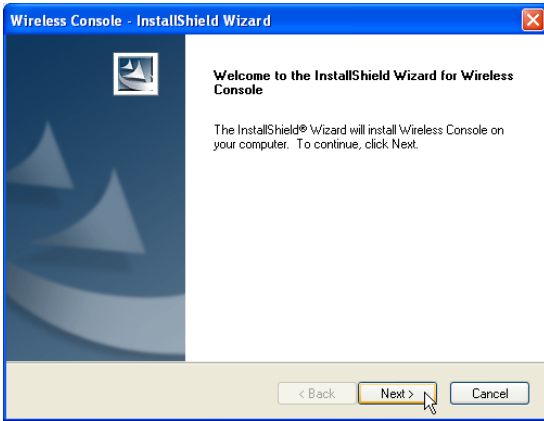
Wireless Console

(Required Utility)

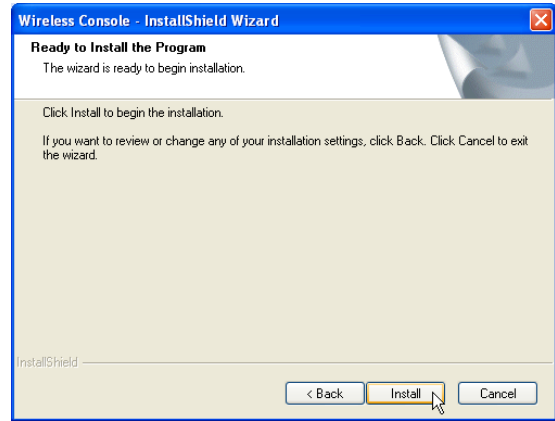
Topics Covered:
Wireless Console Setup

(Screens and drivers may vary depending on your model and operating system.)

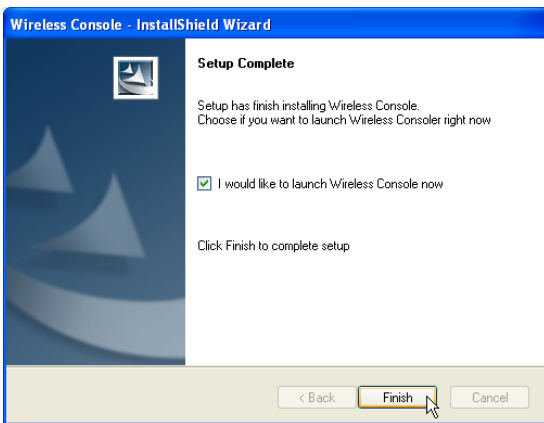
Wireless Console Setup



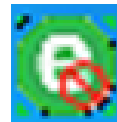
1. On the “Welcome” screen, click **Next**.



2. On the “Ready to Install” screen, click **Install**.



3. On the “Setup Complete” screen, click **Finish**.



An icon will be placed on your taskbar. The red circle with a slash shows that you are not connected to a wireless LAN.

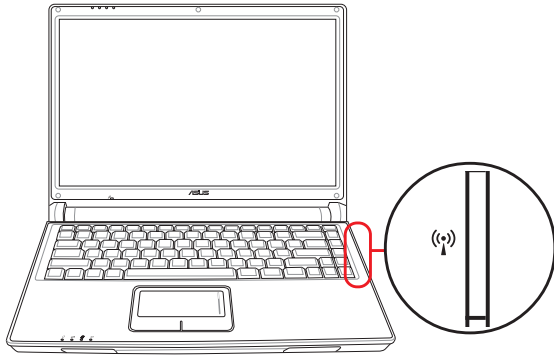


Right-click to bring up a small menu.



“Show Console” brings up this screen.

Turning Wireless LAN ON or OFF



Press the Wireless LAN button on the Notebook's instant launch keys to turn the built-in Wireless LAN ON or OFF.



Wireless LAN drivers must be setup correctly before this function will work.

Copyright Information

No part of this manual, including the products and software described in it, may be reproduced, transmitted, transcribed, stored in a retrieval system, or translated into any language in any form or by any means, except documentation kept by the purchaser for backup purposes, without the express written permission of ASUSTeK COMPUTER INC. (“ASUS”).

ASUS PROVIDES THIS MANUAL “AS IS” WITHOUT WARRANTY OF ANY KIND, EITHER EXPRESS OR IMPLIED, INCLUDING BUT NOT LIMITED TO THE IMPLIED WARRANTIES OR CONDITIONS OF MERCHANTABILITY OR FITNESS FOR A PARTICULAR PURPOSE. IN NO EVENT SHALL ASUS, ITS DIRECTORS, OFFICERS, EMPLOYEES OR AGENTS BE LIABLE FOR ANY INDIRECT, SPECIAL, INCIDENTAL, OR CONSEQUENTIAL DAMAGES (INCLUDING DAMAGES FOR LOSS OF PROFITS, LOSS OF BUSINESS, LOSS OF USE OR DATA, INTERRUPTION OF BUSINESS AND THE LIKE), EVEN IF ASUS HAS BEEN ADVISED OF THE POSSIBILITY OF SUCH DAMAGES ARISING FROM ANY DEFECT OR ERROR IN THIS MANUAL OR PRODUCT.

Product warranty or service will not be extended if: (1) the product is repaired, modified or altered, unless such repair, modification or alteration is authorized in writing by ASUS; or (2) the serial number of the product is defaced or missing.

Products and corporate names appearing in this manual may or may not be registered trademarks or copyrights of their respective companies, and are used only for identification or explanation and to the owners’ benefit, without intent to infringe.

SPECIFICATIONS AND INFORMATION CONTAINED IN THIS MANUAL ARE FURNISHED FOR INFORMATIONAL USE ONLY, AND ARE SUBJECT TO CHANGE AT ANY TIME WITHOUT NOTICE, AND SHOULD NOT BE CONSTRUED AS A COMMITMENT BY ASUS. ASUS ASSUMES NO RESPONSIBILITY OR LIABILITY FOR ANY ERRORS OR INACCURACIES THAT MAY APPEAR IN THIS MANUAL, INCLUDING THE PRODUCTS AND SOFTWARE DESCRIBED IN IT.

Copyright © 2005 ASUSTeK COMPUTER INC. All Rights Reserved.

Limitation of Liability

Circumstances may arise where because of a default on ASUS’ part or other liability, you are entitled to recover damages from ASUS. In each such instance, regardless of the basis on which you are entitled to claim damages from ASUS, ASUS is liable for no more than damages for bodily injury (including death) and damage to real property and tangible personal property; or any other actual and direct damages resulted from omission or failure of performing legal duties under this Warranty Statement, up to the listed contract price of each product.

ASUS will only be responsible for or indemnify you for loss, damages or claims based in contract, tort or infringement under this Warranty Statement.

This limit also applies to ASUS’ suppliers and its reseller. It is the maximum for which ASUS, its suppliers, and your reseller are collectively responsible.

UNDER NO CIRCUMSTANCES IS ASUS LIABLE FOR ANY OF THE FOLLOWING: (1) THIRD-PARTY CLAIMS AGAINST YOU FOR DAMAGES; (2) LOSS OF, OR DAMAGE TO, YOUR RECORDS OR DATA; OR (3) SPECIAL, INCIDENTAL, OR INDIRECT DAMAGES OR FOR ANY ECONOMIC CONSEQUENTIAL DAMAGES (INCLUDING LOST PROFITS OR SAVINGS), EVEN IF ASUS, ITS SUPPLIERS OR YOUR RESELLER IS INFORMED OF THEIR POSSIBILITY.

Contact Information

ASUSTeK COMPUTER INC.

Company address: 15 Li-Te Road, Beitou, Taipei 11259
General (tel): +886-2-2894-3447 Web site address: www.asus.com.tw
General (fax): +886-2-2894-7798 General email: info@asus.com.tw

Technical support

General support (tel): +886-2-2894-3447 Online support: <http://support.asus.com>

ASUS COMPUTER INTERNATIONAL (America)

Company address: 44370 Nobel Drive, Fremont, CA 94538, USA
General (fax): +1-510-608-4555 Web site address: usa.asus.com

Technical support

General support (tel): +1-502-995-0883 Online support: <http://support.asus.com>
Notebook (tel): +1-510-739-3777 x5110 Support (fax): +1-502-933-8713

ASUS COMPUTER GmbH (Germany & Austria)

Company address: Harkort Str. 25, D-40880 Ratingen, Germany
General (tel): +49-2102-95990 Web site address: www.asuscom.de
General (fax): +49-2102-959911 Online contact: www.asuscom.de/sales

Technical support

Component support: +49-2102-95990 Online support: <http://support.asus.com>
Notebook support: +49-2102-959910 Support (fax): +49-2102-959911