

Installation & Replacement

Follow the individual procedures to perform the notebook's installation and replacement of various major components.

Z70N Series Notebook is a fusion of flexibility, style and performance. The key upgradeable and replaceable items include the Memory module, HDD module, Optical Drive module, CPU Module

Be sure to follow the safety instructions described from the start to safeguard the notebook against any potential damages.

This chapter includes the following items:

- Appropriate Tools
- Precaution
- Installation and Replacement for HDD Module
- Installation and Replacement for Memory Module
 - ▶ Second Memory Module
 - ▶ First Memory Module
- Installation and Replacement for CPU Module
- Installation and Replacement for Mini-PCI Adapter
- Installation for ODD Module

Appropriate Tools

The illustrations below show the appropriate tools that should be used for the notebook's service and repair.

CROSS
SCREW-
DRIVER

Phillips-head Screwdriver

Use a Phillips-head screwdriver to fasten/remove the K- or B-typed screws.



FLATHEAD
SCREW-
DRIVER

Single-Slotted Screwdriver

Use a single-slotted screwdriver to lock/unlock the flexible cable connector locks



TWEEZERS

Tweezers

Use a pair of tweezers to remove/insert flexible cables.



INSERTION
AND
EXTRACTION
TOOL FOR
FPC
CONNECTOR

Insertion and extraction tool for FPC connector

Use insertion and extraction tool for FPC connector to handle locking and unlocking of FPC connectors.



VACUUM
HANDLING
TOOL

Vacuum Handling Tool



CAUTIONS

Precautions

Before you perform any service and/or repair on the notebook, please follow the steps below first.

1. Be sure that the notebook is powered down.
2. Disconnect the AC plug from the notebook



3. Turn the notebook over. Unlock and hold the latches, and remove the battery .



4. Remove all rings, watches and any other metal objects from your hands.



5. Always wear a ground strap on your hand to protect the notebook from static discharge.



Installation and Replacement for HDD Module

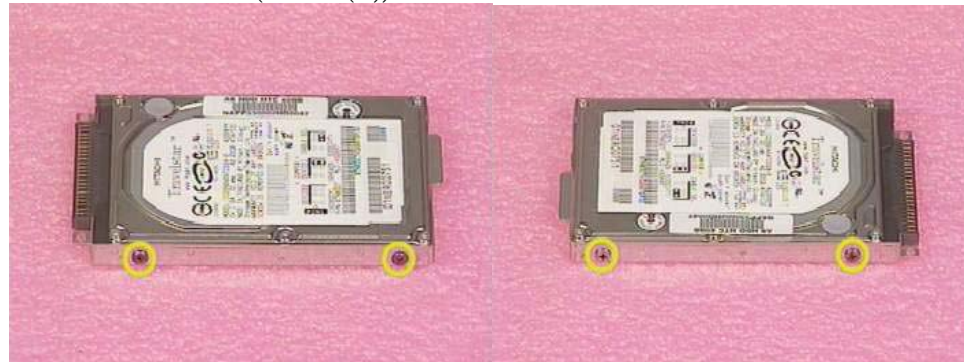
The Z70N series Notebook uses an industry-standard 2½ HDD with IDE interface. You can replace the HDD to any capacity of your choice within our approval and prior test

First, remove AC-power and battery

1. Remove 2 screws (M2*6L(K)) and take the hard disk cover off. Hold the arrow and pull out the HDD module then take it away.



2. Remove 2 screw (M2*4L(K)) on both sides



3. Separate hard disk from the housing

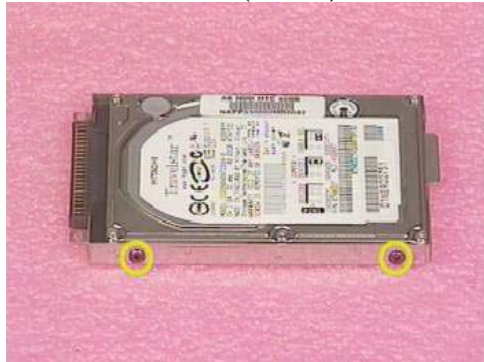
INSTALLATION & REPLACEMENT



4. Replace the new Hard-Disk onto the HDD Housing.



5. Secure 2 screws (M2*4L) on both sides



6. Insert the hard disk module into its compartment and lay it down gently then put on the hard disk cover. And secure 2 screws (M2*6L(K)).

INSTALLATION & REPLACEMENT



MEMORY
MODULE

Installation and Replacement for Memory Module

The Z70N Series Notebook do not have onboard RAM. There are two SO-DIMM sockets for installing SO-DIMM RAM. It can Installation the total memory size up to 1GB with a 512MB module on each socket.

First, remove AC-power and battery.

Installation Second Memory Module

1. Remove 2 screws (M2*3L(K)) and take the memory DIMM cover away.



2. Insert the new memory module to DIMM socket at 45 degrees angle and push it down to lock it up. Put on the memory DIMM cover and secure 2 screws (M2*3L(K)) to fix it.

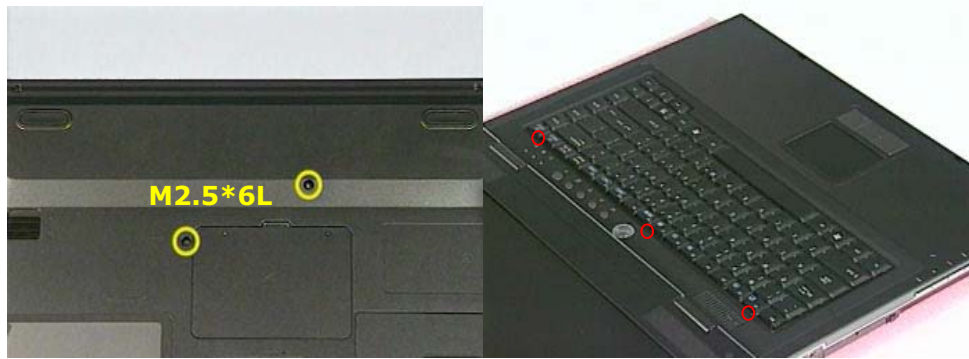


FIRST
MEMORY
MODULE

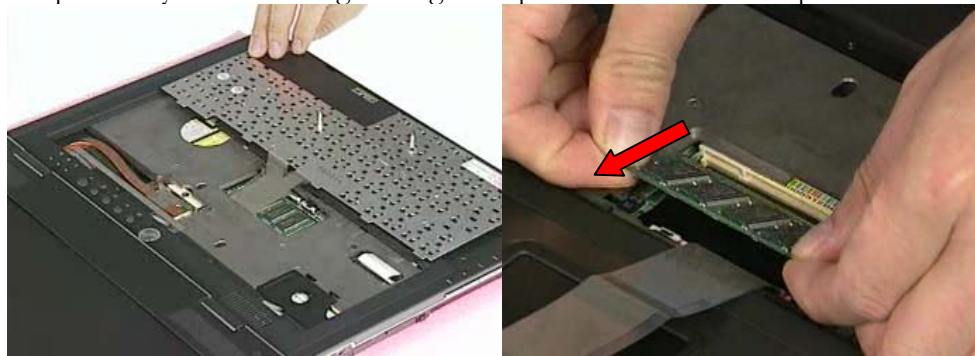
First, remove AC-power and battery.

Installation First Memory Module

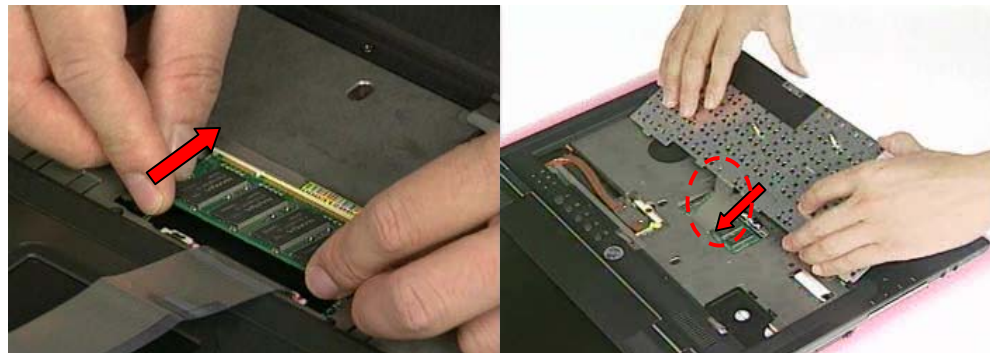
1. Remove 2 screws (M2.5*6L(K)) at bottom side then turn back the notebook and use tweezers to unlock 3 keyboard latches.



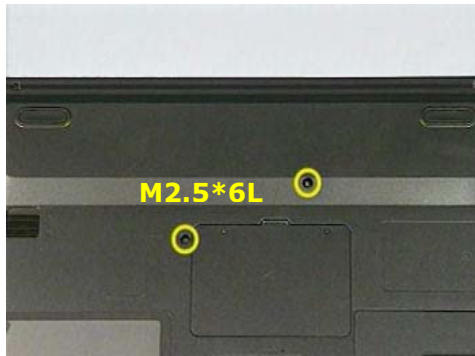
2. Pull out the keyboard module and then lay on the top case. Open the two latches to pop up memory module 45 degrees angle and push it down to lock it up.



3. Insert the new memory module to DIMM 45 degrees angle and push it down to lock it up. Install the keyboard module onto top case and secure 2 screws (M2.5*6L(K)) at bottom side then fix it.



INSTALLATION & REPLACEMENT



CPU MODULE

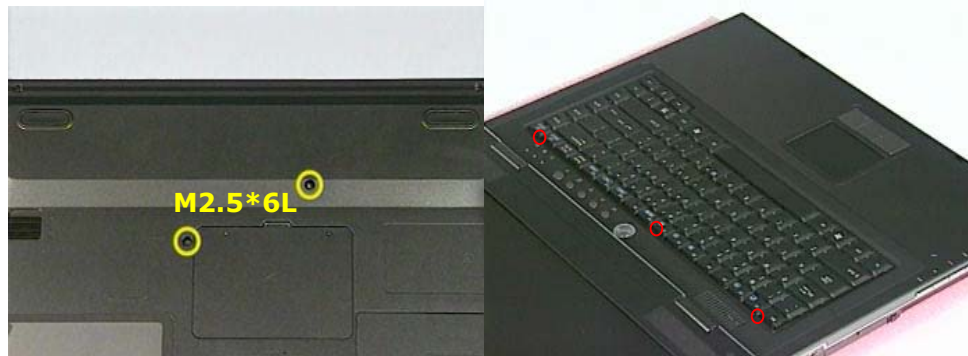
Installation and Replacement for CPU Module

The Z70N Series Notebook comes standard with a Intel®'s μ FC-PGA Socket on the motherboard, which means it can support all μ FC-PGA CPUs up to 1.7 GHz.

CPU REMOVAL

First, remove AC-power and battery.

1. Remove 2 screws (M2.5*6L(K)) at bottom side then turn back the notebook and use tweezers to unlock 3 keyboard latches.

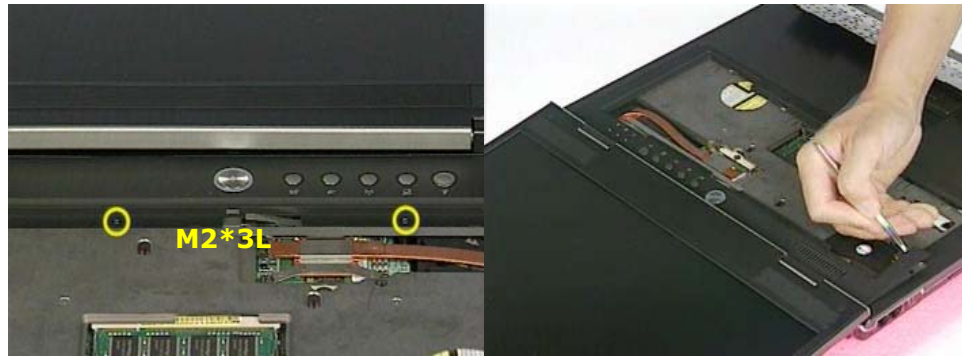


2. Pull out the keyboard module and then lay on the top case. Disconnect keyboard FPC cable and take the keyboard away.

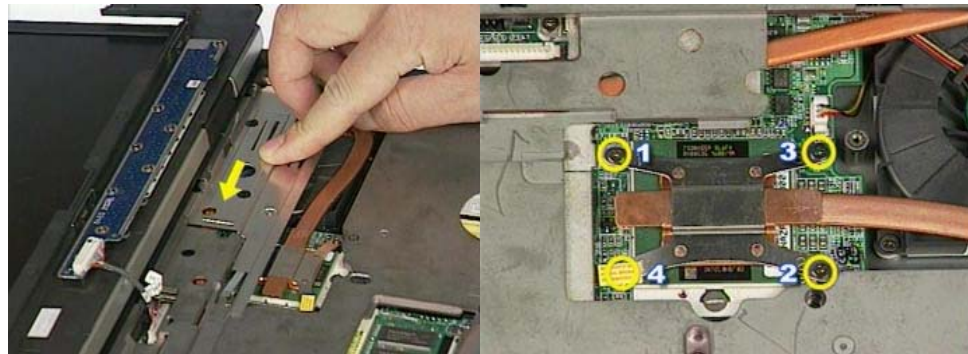


3. Remove 2 screws (M2*3L(K)) at keyboard cover and use tweezers to lift up the keyboard cover's two nooks.

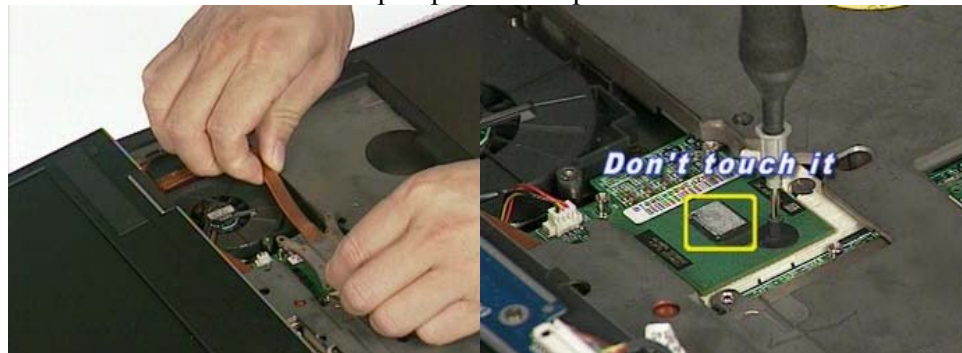
INSTALLATION & REPLACEMENT



4. Slide the FAN bracket left then take it away. Remove 4 screws (M2*6L(K)) at heat sink.

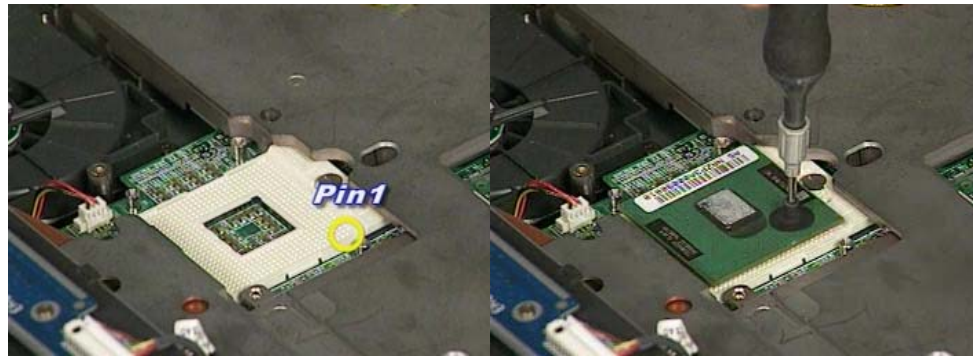


5. Remove Thermal module and open the CPU Socket's latch to loosen the CPU.(The use the CPU vacuum hand pump to "suck up" the CPU and lift the CPU away.)

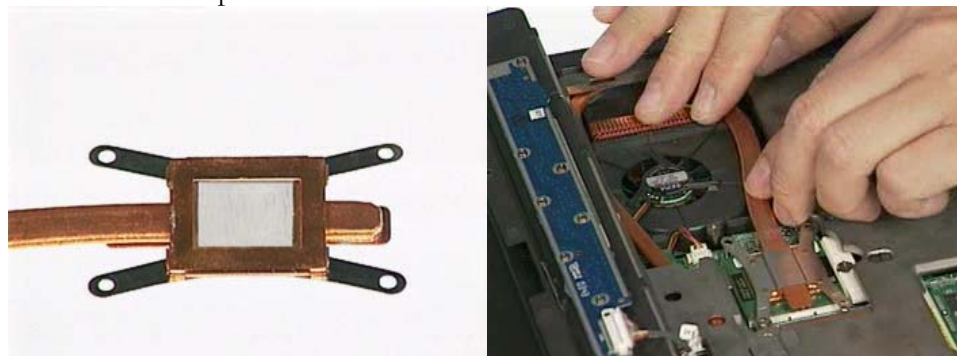


6. Insert the new CPU onto the socket then close the CPU Socket's latch to fix it.

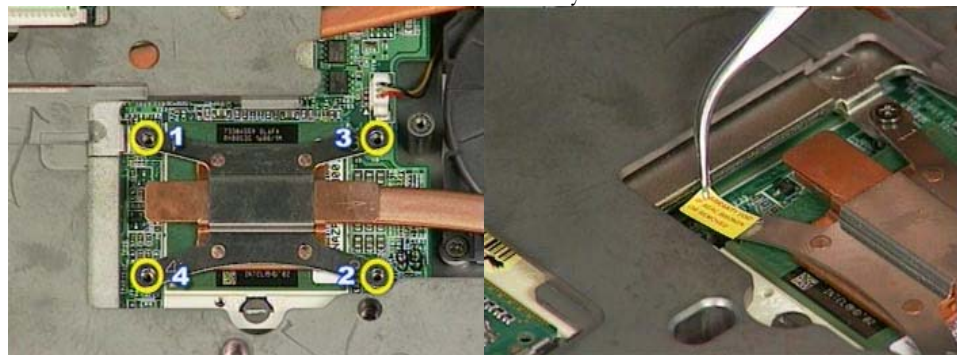
INSTALLATION & REPLACEMENT



7. Paste thermal pad onto the CPU heat sink module then install it.



8. Secure 4 screws to fix it and stick the warranty seal label on the screw.

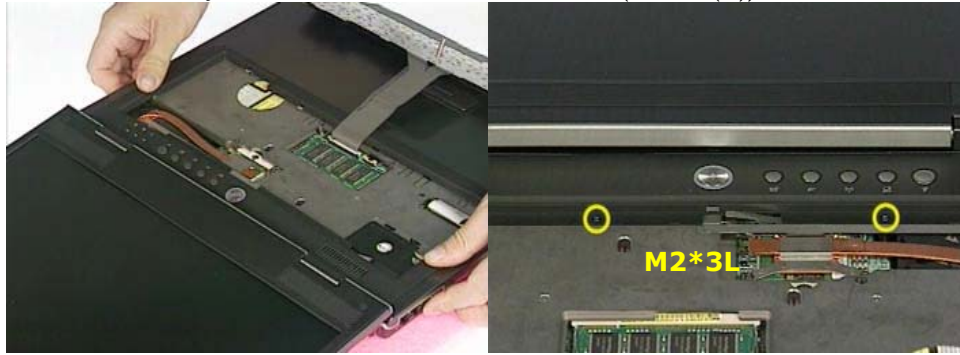


9. Put on FAN bracket properly.

INSTALLATION & REPLACEMENT



10. Install the keyboard cover then secure 2 screws (M2*3L(K)) to fix it.



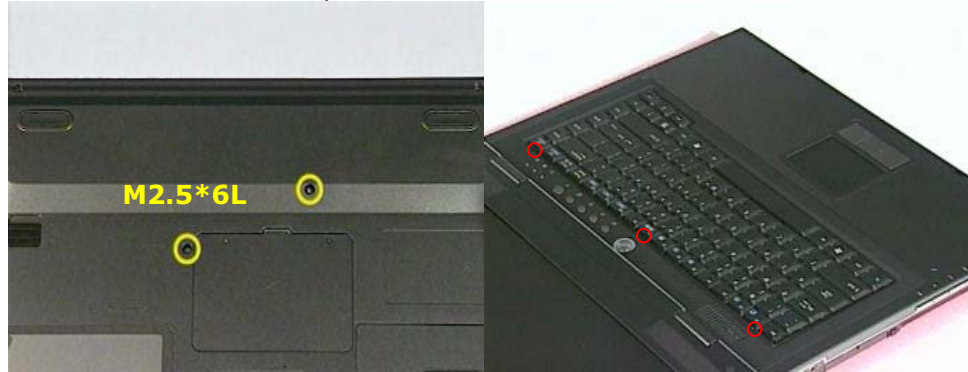
11. Install the keyboard module onto top case and secure 2 screws (M2.5*6L(K)) at bottom side then fix it.



Installation and Replacement for Mini-PCI Adaptor

First, remove AC-power and battery.

1. Remove 2 screws (M2.5*6L(K)) at bottom side then turn back the notebook and use tweezers to unlock 3 keyboard latches.



2. Pull out the keyboard module and then lay on the top case. Disconnect keyboard FPC cable and take the keyboard away.

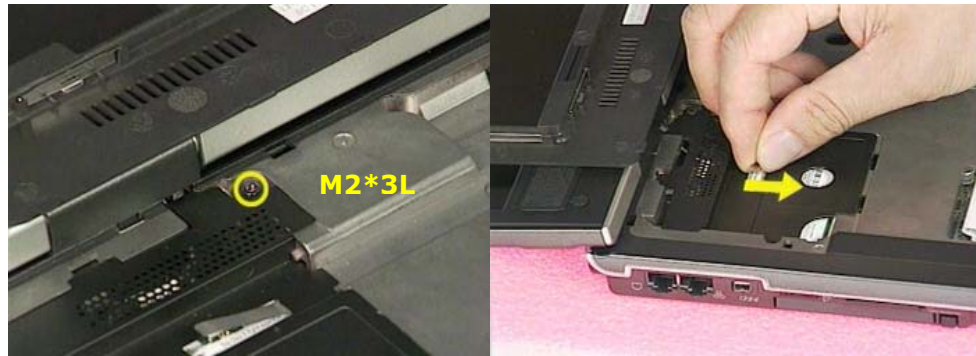


3. Remove 2 screws (M2*3L(K)) at keyboard cover and use tweezers to lift up the keyboard cover's two nooks.

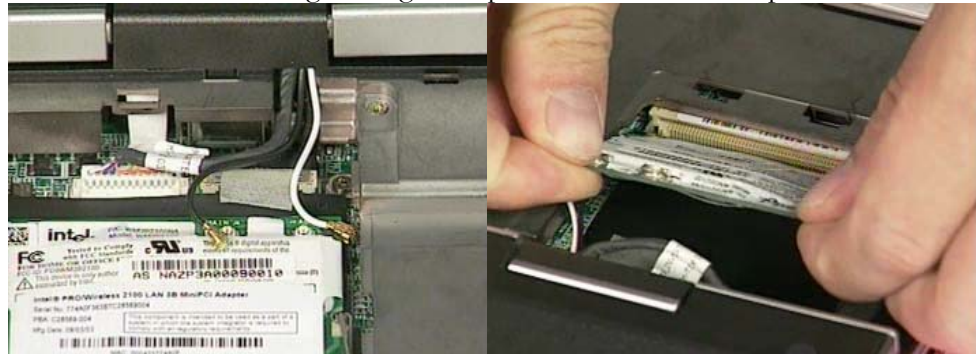


4. Remove 1 screw (M2*3L(K)) at mini-PCI cover and take it off

INSTALLATION & REPLACEMENT



5. Disconnect the two antenna cables then open the two latches to pop up wireless WLAN module 45 degrees angle and push it down to lock it up.

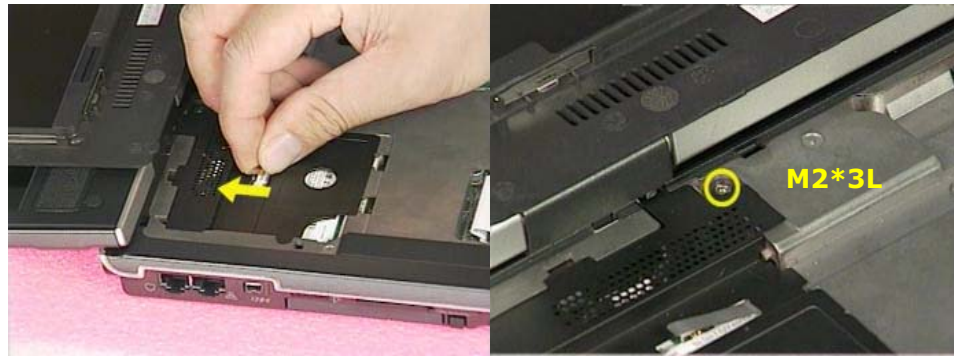


6. Insert the new wireless LAN module to mini-PCI socket at 45 degrees angle and push it down to lock it up and connect the 2 antenna cables.

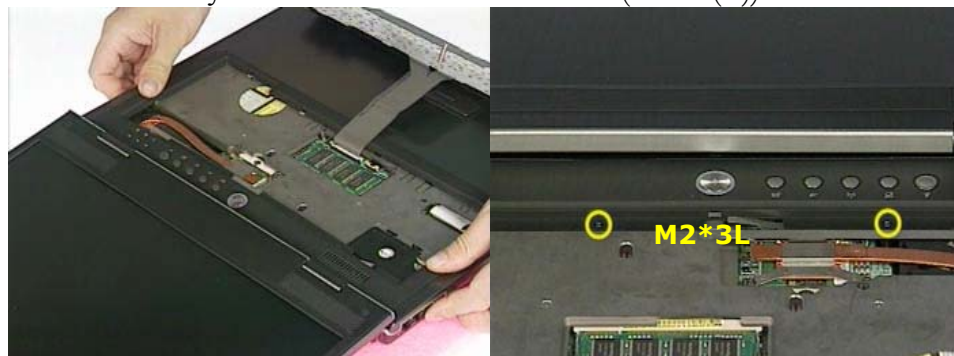


7. Put on the mini-PCI cover and secure 1 screw (M2*3L(K)) to fix it.

INSTALLATION & REPLACEMENT



8. Install the keyboard cover then secure 2 screws (M2*3L(K)) to fix it.



9. Install the keyboard module onto top case and secure 2 screws (M2.5*6L(K)) at bottom side then fix it.



OPTICAL DRIVE
MODULE
INSTALLATION

Installation for Optical Drive Module

The illustration below shows how to assemble and install the optical drive module of the notebook.

1. Insert the optical drive module to its compartment you will hear “click” sound when insert properly.

