

## Installation & Replacement

*Follow the individual procedures to perform the notebook's installation and replacement of various major components.*

**Z80H** Series, equipped with 14.1-inch and 15.0-inch displays, pack unparalleled processing power for graphics design and digital video editing. The key installable and replaceable items include the HDD module, Optical Drive module, Memory module CPU Module and Mini-PCI adapter.

*Be sure to follow the safety instructions described from the start to safeguard the notebook against any potential damages.*

This chapter includes the following items:

- Appropriate Tool
- Precaution
- HDD Module Installation and Replacement
- Optical Drive Module Installation and Replacement
- Memory Module Installation and Replacement
- CPU Module Installation and Replacement
- Mini-PCI Adapter Installation and Replacement

---

TOOLS

---

## Appropriate Tools

The illustrations below show the appropriate tools that should be used for the notebook's service and repair.

---

CROSS  
SCREW-DRIVER

---

### Phillips-head Screwdriver

Use a Phillips-head screwdriver to fasten/remove the K- or B-typed screws.



---

FLATHEAD  
SCREW-DRIVER

---

### Single-Slotted Screwdriver

Use a single-slotted screwdriver to lock/unlock the flexible cable connector locks



---

TWEEZERS

---

### Tweezers



Use a pair of tweezers to remove/insert CPU warranty label.

---

AMP  
CPU SOCKET  
TOOL

---

### Vacuum Handling Tool

Use vacuum handling tool to handle CPU.



---

VACUUM  
HANDLING  
TOOL

---

### AMP CPU Socket Tool

Use AMP CPU Socket tool to lock/unlock the AMP socket of CPU.

Width: 4.45mm Depth: 0.6+/-0.2mm. The angle of tip: approximate 9 degree



## INSTALLATION & REPLACEMENT

---

**MOLEX  
CPU SOCKET  
TOOL**

---

### **Molex CPU Socket Tool**

Use Molex CPU Socket tool to lock/unlock the Molex socket of CPU.

Width: 4.00mm Depth: 0.45+/-0.1mm. The angle of tip: approximate 9 degree

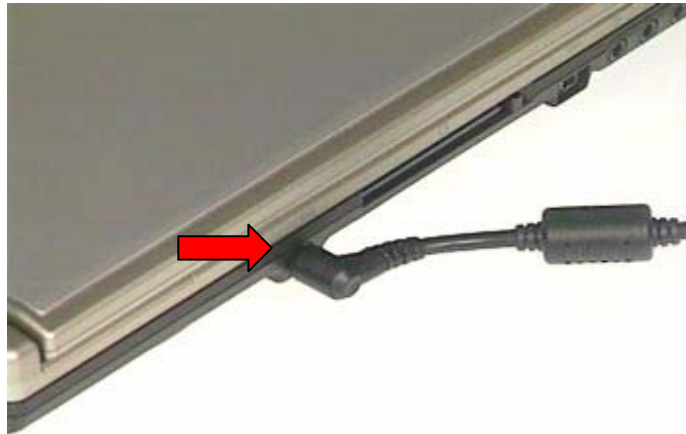


CAUTIONS

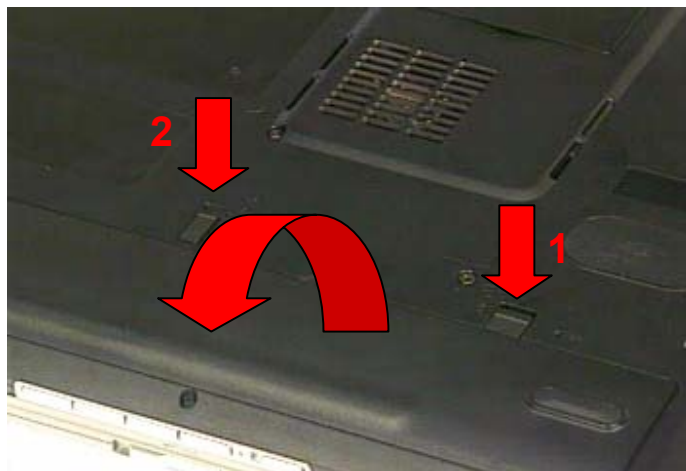
## Precautions

Before you perform any service and/or repair on the notebook, please follow the steps below first.

1. Be sure that the notebook is powered down.
2. Disconnect the DC plug from the rear of the notebook



3. Slide the battery latch 1 to open. Slide the battery latch 2 and lift the battery away from the system.

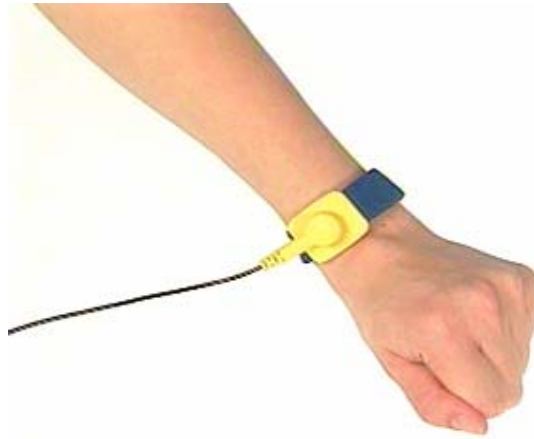


## INSTALLATION & REPLACEMENT

4. Remove all rings, watches and any other metal objects from your hands.



5. Always wear a ground strap on your hand to protect the notebook from static discharge.

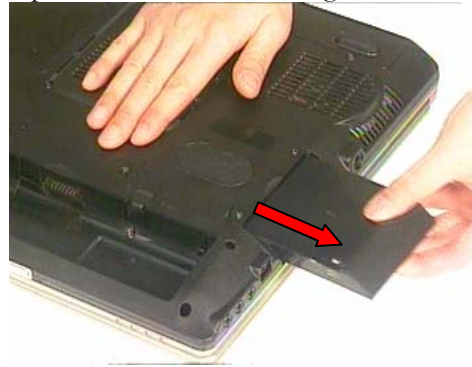


## HDD Installation and Replacement

The Z80H series Notebook uses an industry-standard 2½ HDD with IDE interface. You can replace the HDD to any capacity of your choice within our approval and prior test.

### Installing HDD

1. Turn the notebook over and remove battery pack first.
2. Remove 3 screws on the bottom. Then pull out the HDD housing Module.

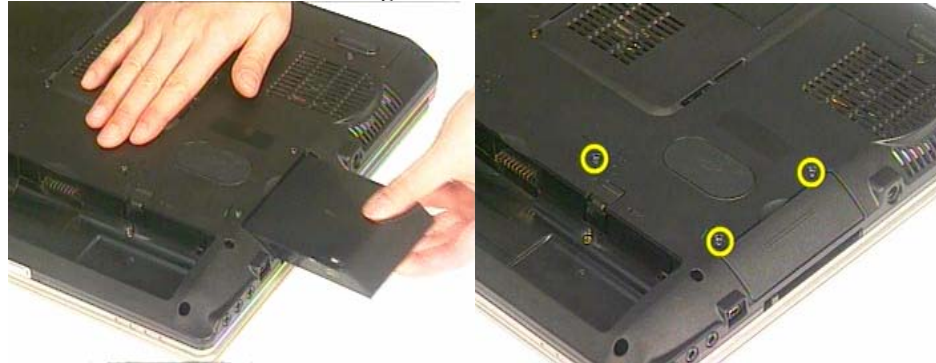


3. Secure 2 screws (M3\*3L) on both side.



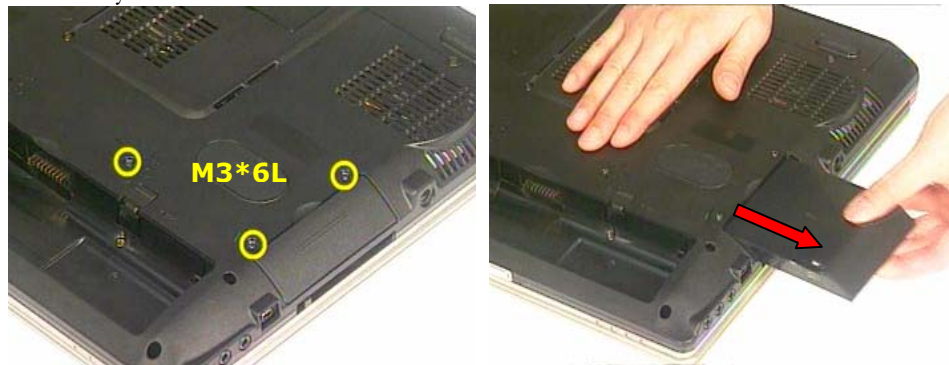
## INSTALLATION & REPLACEMENT

4. Place back the HDD housing module.



### Replacing HDD

1. Remove 3 screws (M3\*6L) . Then pull out the HDD Module to take the HDD away.



2. Remove 2 screws (M3\*3L) . Then on the other side 2 screws (M3\*3L) . Then separate HDD from the HDD Housing.



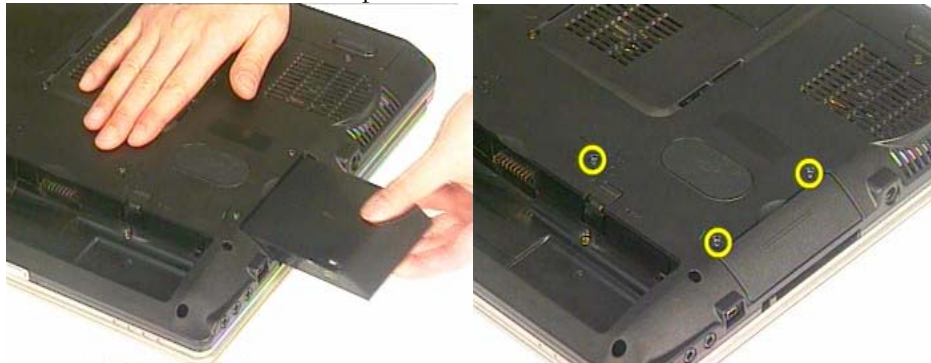
## INSTALLATION & REPLACEMENT



3. Place new HDD into the HDD housing. Secure 2 screws (M3\*3L) . Then 2 screws (M3\*3L) on the other side.



4. Replace HDD Module, and Secure 3 screws (M3\*6L) . This completes the HDD installation and replacement.





---

ODD

---

## Optical Drive Installation and Replacement

Insert the Optical Drive into the system. Secure 2 screws (M2\*6L) to fix it.



---

MEMORY

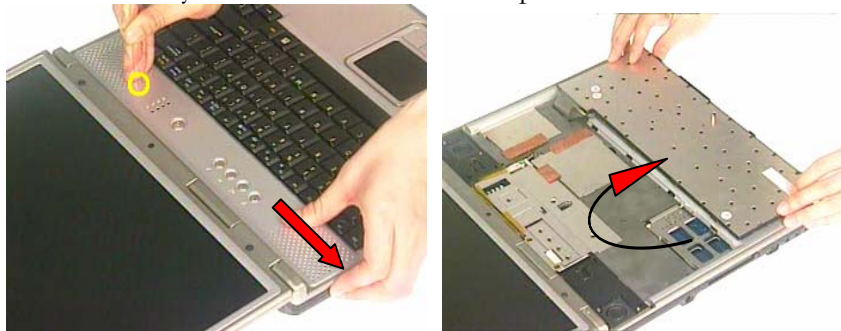
---

## Memory Installation & Replacement

The Z80H Series Notebooks do not have onboard RAM. There are two SO-DIMM sockets for installing SO-DIMM RAM. It can install the total memory size up to 2GB with a 1GB module on each socket.

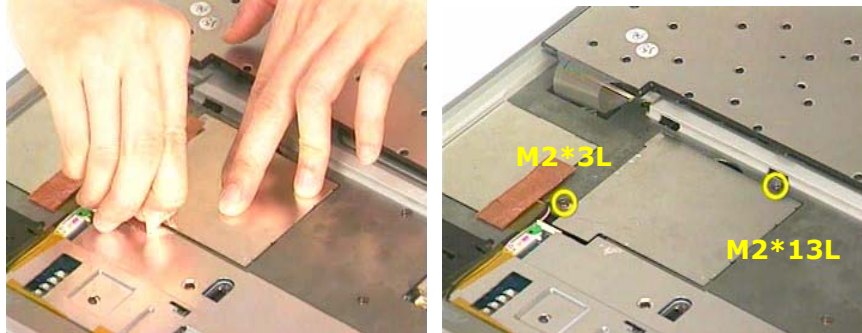
### Installing & Replacing memory

1. Stick the tip of a small screwdriver in the tiny hole, and slide the keyboard cover to the left side to remove the keyboard cover.  
Pull the keyboard out to the front and place it face down on the Top case.

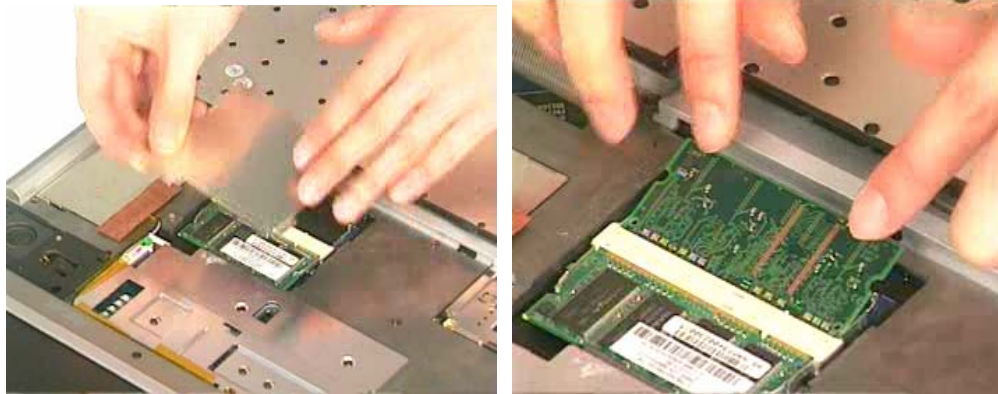


## INSTALLATION & REPLACEMENT

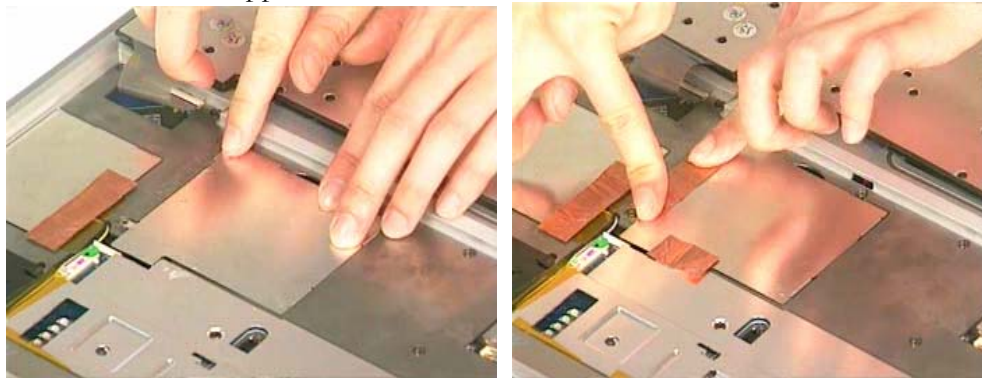
2. Remove 2 copper foils. Remove 2 screws ( M2\*3L ) ( M2\*13L ) .



3. Then remove DDR DIMM Cover. Insert the Memory module into the memory socket at 45 degrees angle to lock it up.

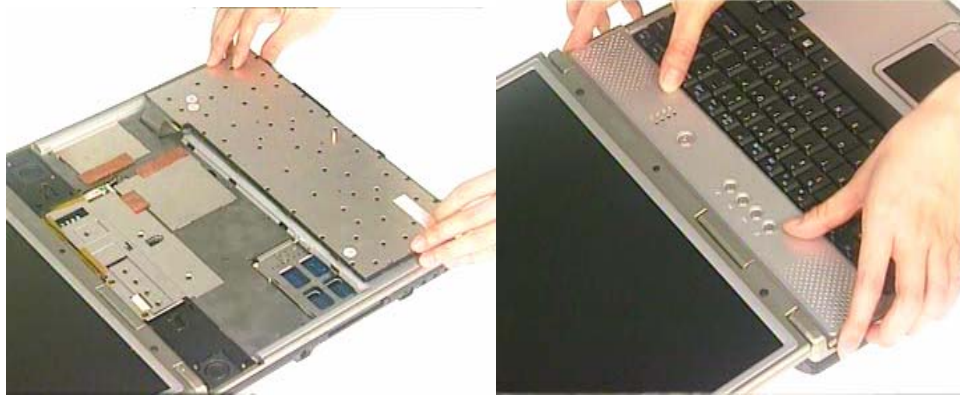


4. Insert the DDR DIMM cover and secure 2 screws ( M2\*3L ) ( M2\*13L ) to fix it. Paste 2 copper foils.



5. Replace and turn the keyboard module over and slide it into place. Place the keyboard cover on top case then push the keyboard cover rightward to lock it.

## INSTALLATION & REPLACEMENT



---

### C P U

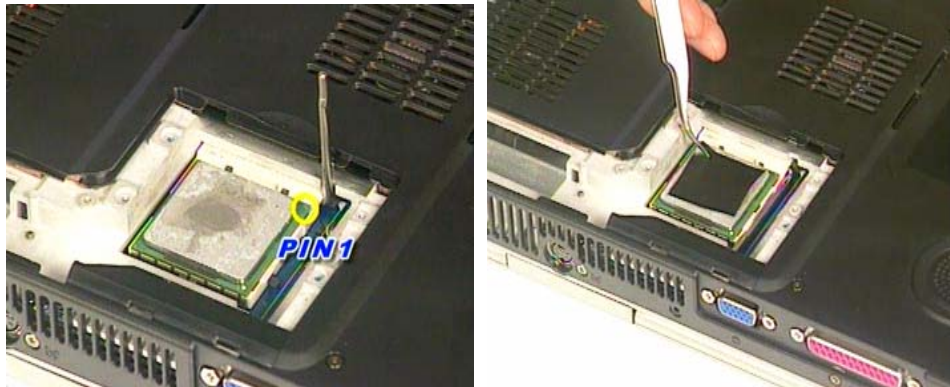
---

## Installation and Replacement CPU Module

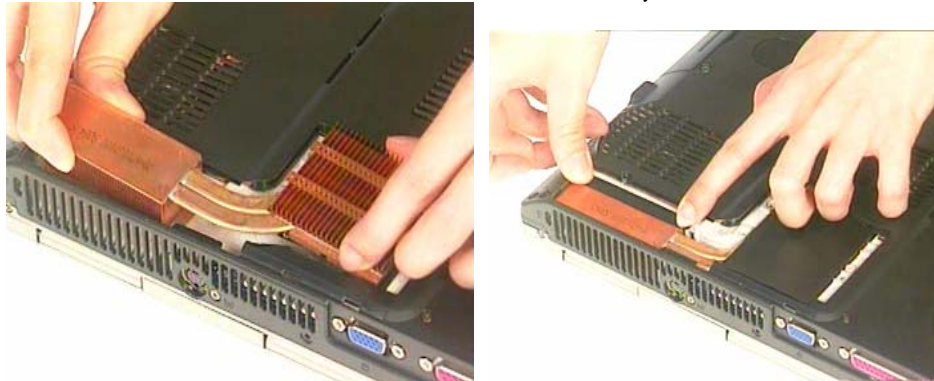
The Z80H Series Notebook comes standard with an Intel®'s  $\mu$ FC-PGA/mPGA Socket on the motherboard.

### Installing CPU

1. Use the CPU vacuum to “suck up” the new CPU, and then install it onto the socket and match the triangle sign on CPU map to the socket triangle sign. Lock the CPU Socket's latch to fix the CPU. Put the thermal-pad on the CPU die.



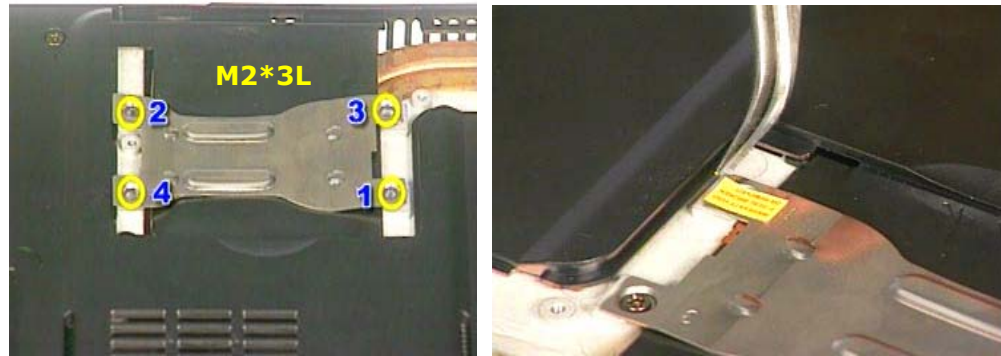
2. Assemble the CPU Heat sink on CPU. Paste 2 Mylar's.



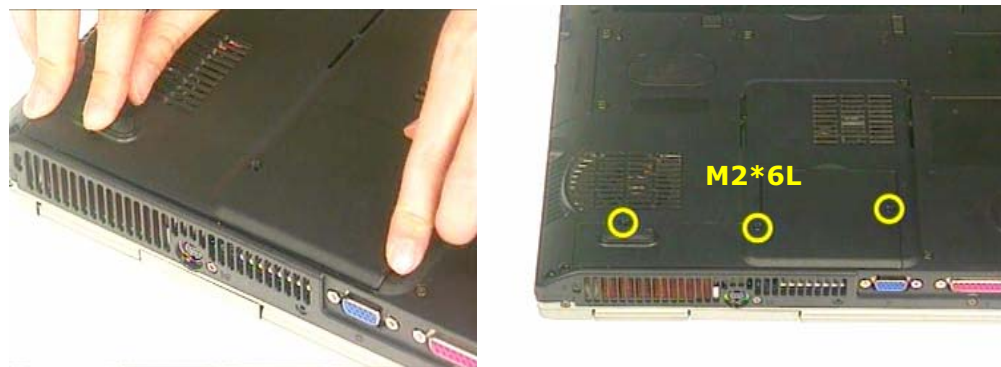


## INSTALLATION & REPLACEMENT

3. Replace the CPU bracket on CPU Heat sink. Secure 4 screws ( M2\*3L ) in proper order. Stick the warranty label.



4. Install CPU Cover. And Secure 3 screws ( M2\*6L ) .



### Removing CPU

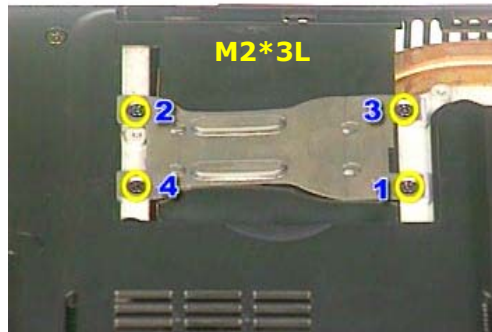
First, remove AC-power and battery.

1. Remove 3 screws ( M2\*6L ) . Remove CPU cover.

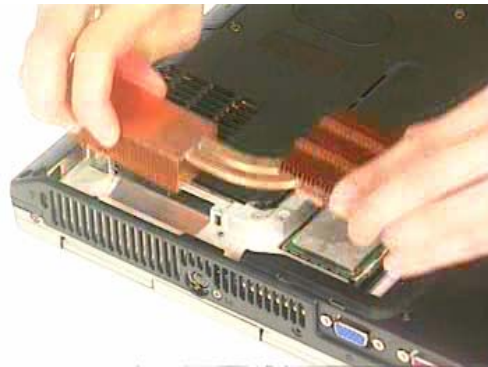


2. Remove 4 screws ( M2\*3L ) . Then remove CPU bracket.

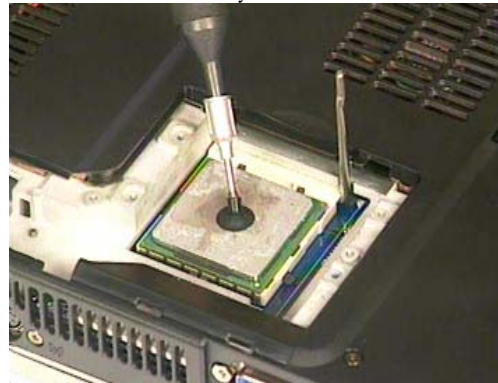
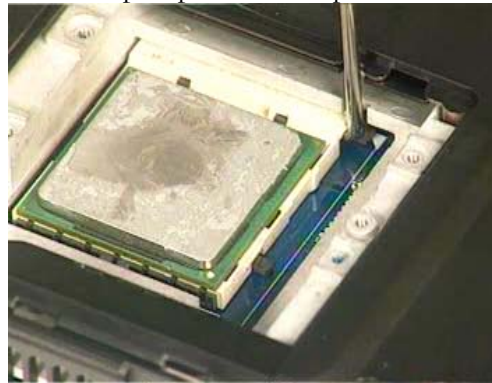
## INSTALLATION & REPLACEMENT



3. Remove 2 Mylar's. Remove CPU Heat-sink module.



4. Open the CPU Socket's latch to loosen the CPU. Then use the CPU vacuum hand pump to "suck up" the CPU and lift the CPU away.

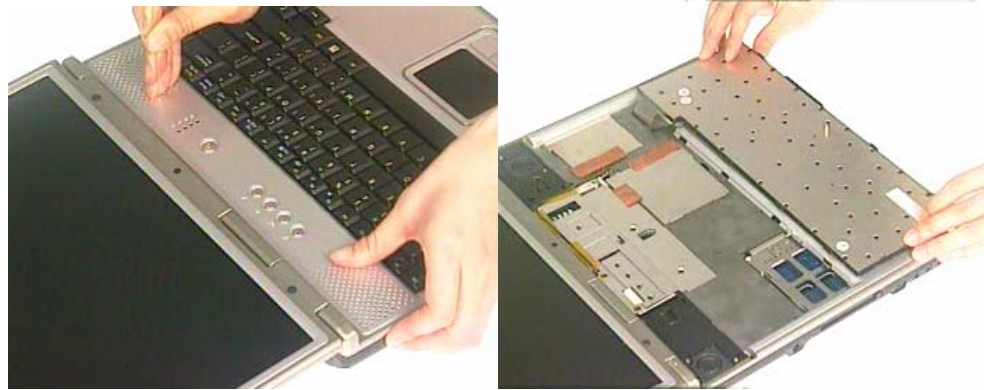


## Installation and Replacement Mini PCI Module

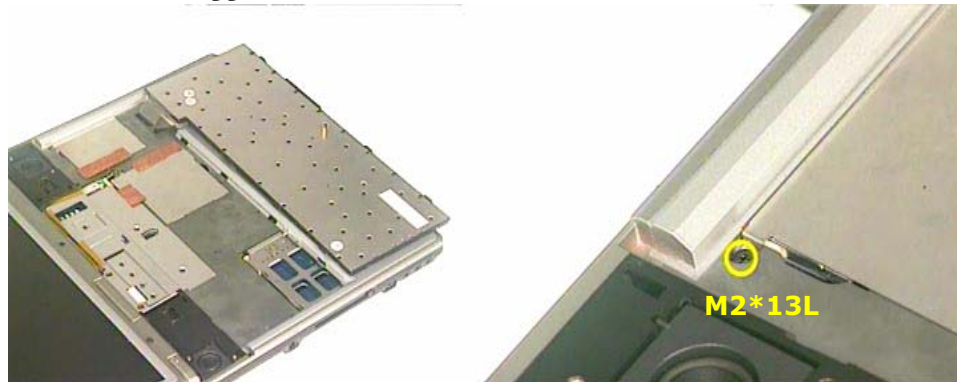
### Installing Mini PCI Module

*First, remove AC-power and battery.*

1. Stick the tip of a small screwdriver in the tiny hole, and slide the keyboard cover to the left side to remove the keyboard cover.  
Pull the keyboard out to the front and place it face down on the Top case.



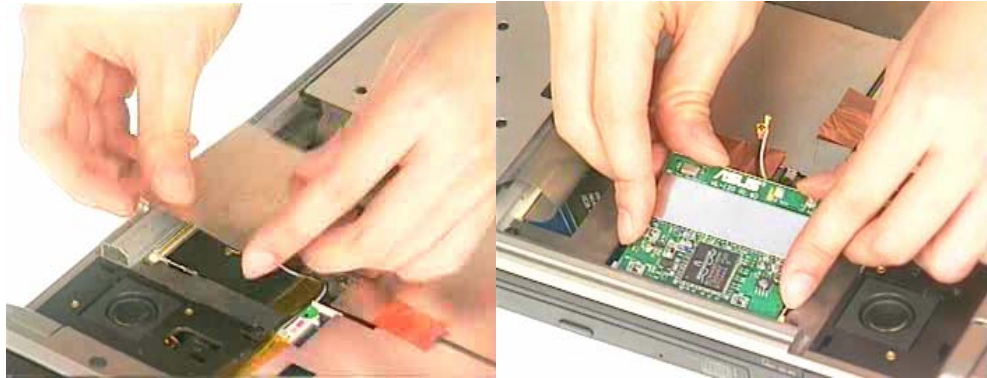
2. Remove 1 copper foil. Remove 1 screw (M2\*13L) .



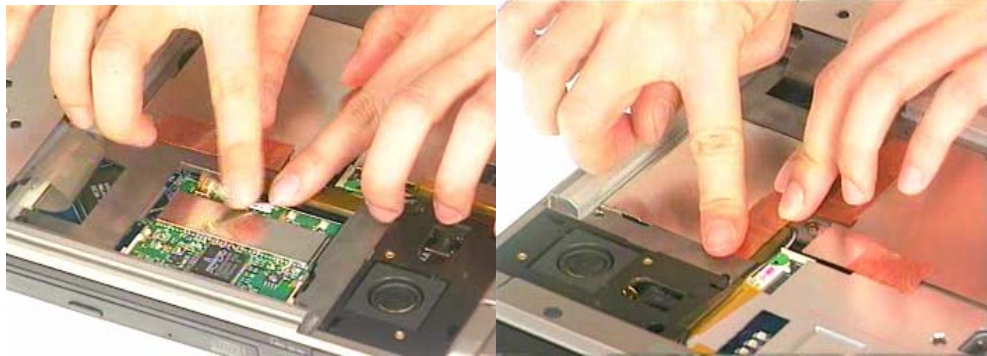
3. Then remove Mini PCI shielding bracket. Push the wireless antenna cable and install MINI PCI Adapter into the MINI PCI socket at angle of 45 degrees and push it out of the way to latch the MINI PCI module.



## INSTALLATION & REPLACEMENT



4. Connect antennae connector main antenna and auxiliary antenna. Insert the Mini PCI cover at angle of 45 degrees and to press down. Secure 1 screw (M2\*13L) to fix the Mini PCI shielding bracket. Paste 1 copper foil.



5. Turn the keyboard module over and slide it into place. Place the keyboard cover on top case then push the keyboard cover right to lock it.

